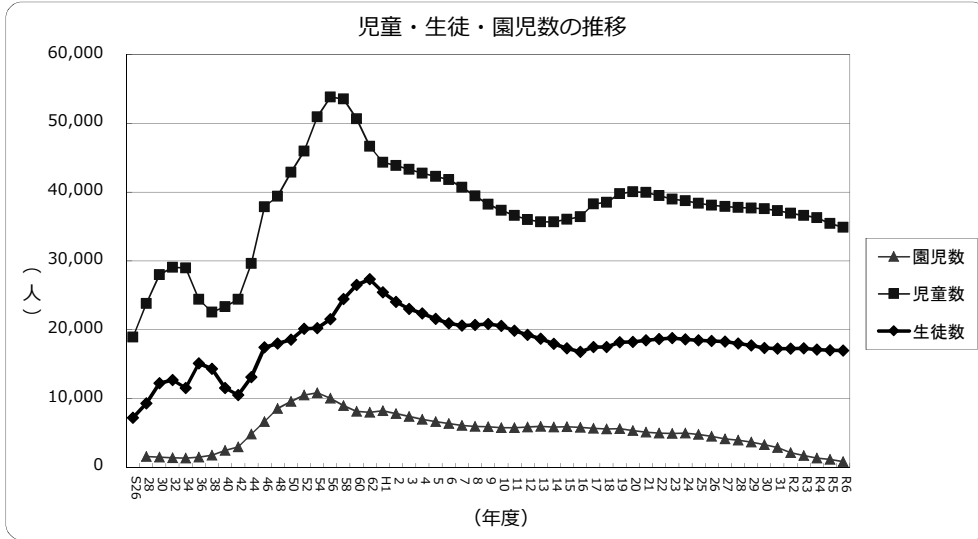


児童生徒園児数の推移（市立学校園）

※各年度の5月1日現在数



年度	園児数	児童数	生徒数
S26		18,946	7,227
28	1,590	23,794	9,326
30	1,510	28,011	12,216
32	1,419	29,062	12,710
34	1,338	28,968	11,555
36	1,510	24,428	15,104
38	1,756	22,539	14,333
40	2,454	23,356	11,560
42	2,965	24,415	10,502
44	4,841	29,643	13,140
46	6,648	37,875	17,437
48	8,572	39,392	17,998
50	9,586	42,875	18,548
52	10,537	45,969	20,147
54	10,857	50,944	20,232
56	10,071	53,789	21,513
58	8,982	53,526	24,489
60	8,152	50,643	26,510
62	7,981	46,656	27,330
H1	8,226	44,317	25,428
2	7,821	43,852	24,046
3	7,383	43,311	23,017
4	7,003	42,762	22,357
5	6,671	42,278	21,599
6	6,362	41,829	20,924
7	6,112	40,695	20,612
8	5,948	39,430	20,716
9	5,929	38,248	20,828
10	5,787	37,362	20,546
11	5,792	36,602	19,869
12	5,850	35,998	19,256
13	5,979	35,655	18,699
14	5,881	35,679	17,976
15	5,915	36,041	17,297
16	5,820	36,400	16,809
17	5,677	38,273	17,513
18	5,589	38,512	17,500
19	5,649	39,780	18,171
20	5,355	40,029	18,244
21	5,124	39,953	18,477
22	4,983	39,505	18,646
23	4,956	38,971	18,781
24	4,976	38,724	18,629
25	4,786	38,384	18,483
26	4,527	38,090	18,370
27	4,166	37,925	18,296
28	3,946	37,762	18,020
29	3,668	37,656	17,724
30	3,304	37,565	17,347
31	2,911	37,282	17,264
R2	2,167	36,945	17,274
R3	1,725	36,598	17,304
R4	1,347	36,290	17,126
R5	1,186	35,427	17,034