

BLOCK NO. 13

街区計算

街区略図

工区

3

ブロック

73

記入者



点検者



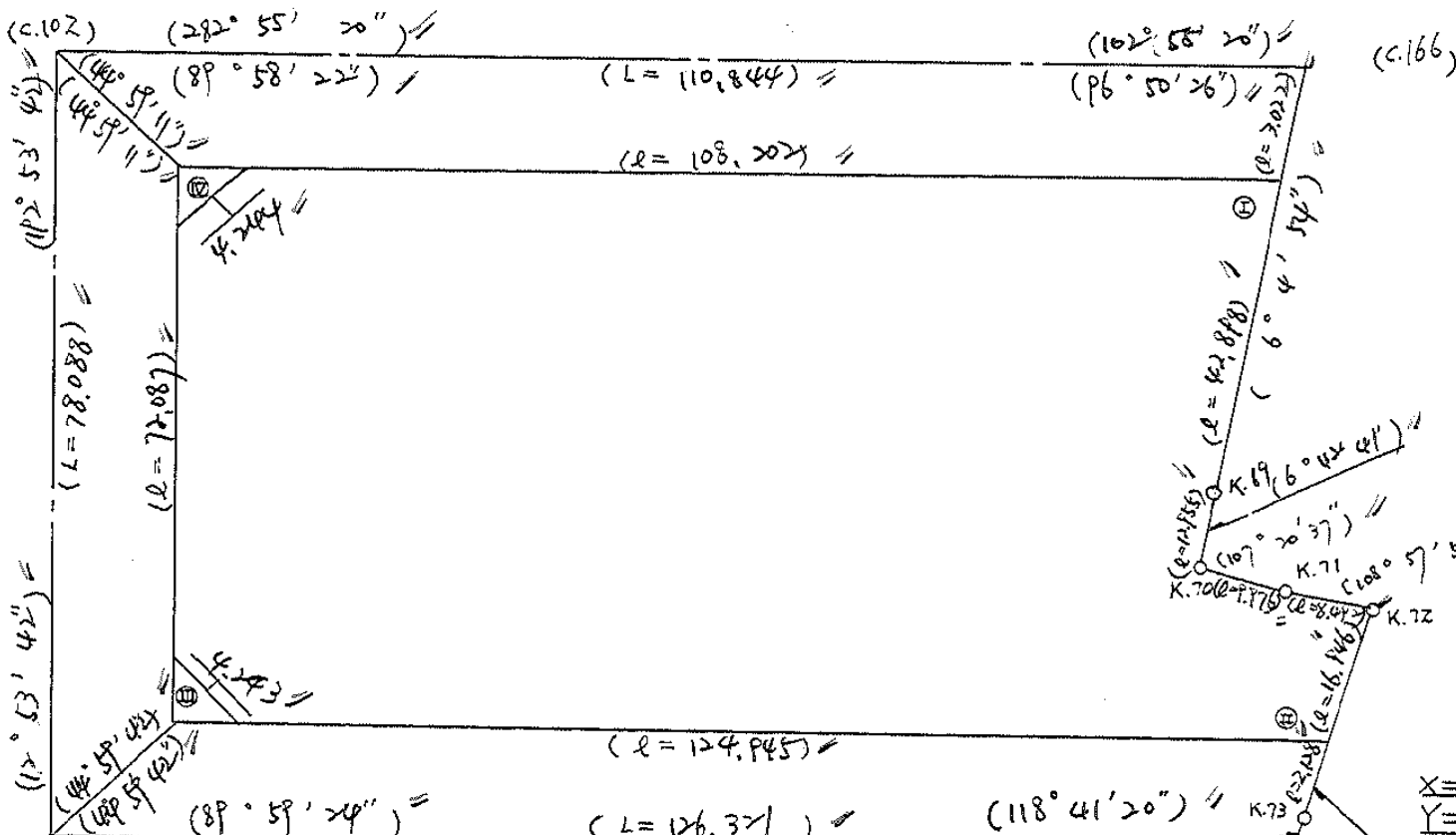
$X = -152,728.590$
 $Y = -37,090.962$

W = 6.000

$X = -152,753.378$
 $Y = -36,982.925$



W = 6.000



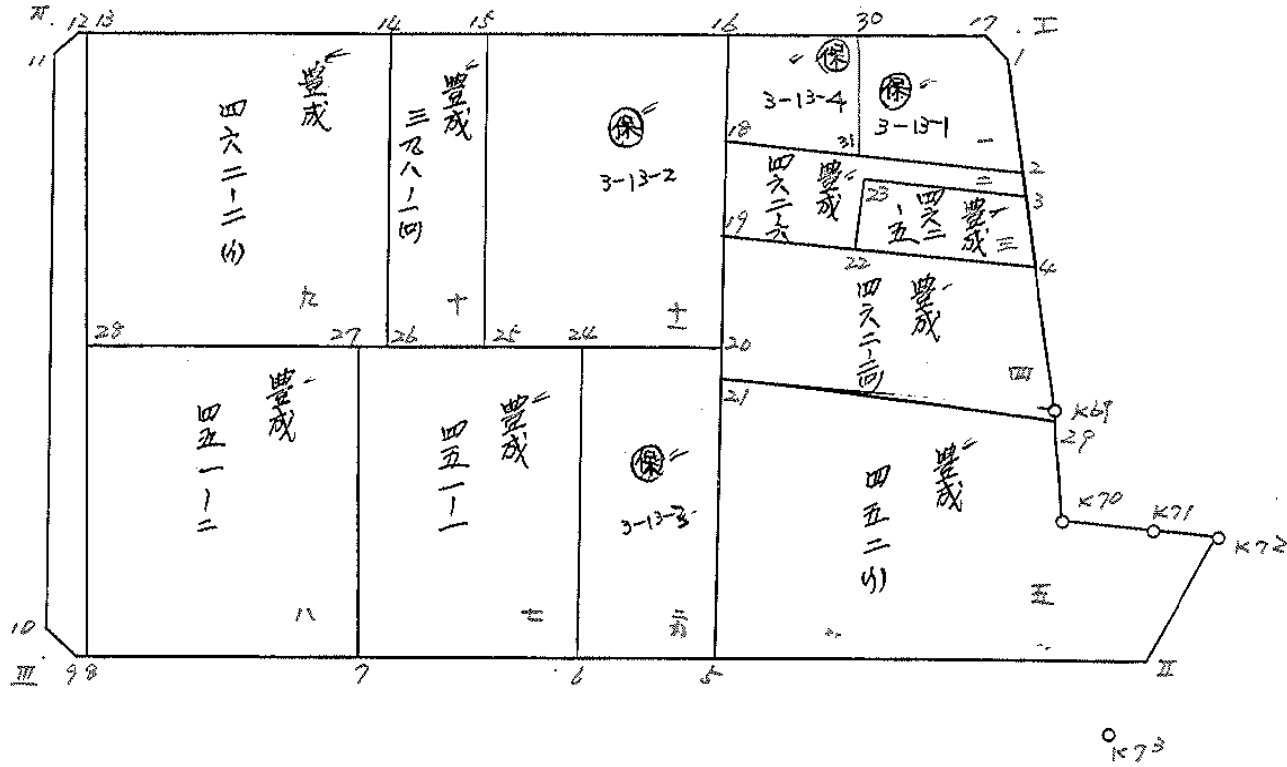
$X = -152,804.710$ (C.103)
 $Y = -37,108.338$

W = 6.000

$X = -152,832.879$
 $Y = -36,985.248$

圖地計算

3区 BNo.13



面積計算書

工区 4
ブロック 13
計算者 美
精算者 備考

1. 保. 3-13-1
2. 豊成 462-6

点	①	②	③	④	⑤	⑥	③ × ⑤		② × ⑥	
	X	X-(定数)	X _{n-1} -X _{n+1}	Y	Y-(定数)	Y _{n-1} -Y _{n+1}	+	-	+	-
1	759.367	-152.700	+16.104	983.563	-36.900	83.563	-1280			
2	771.817	71.817	+2.288	984.889	84.889	732.600				
18	761.655	61.655	-22.347	986.163	116.163	+28.491	12595.894561			
16	749.470	49.470	-5.942	983.380	113.380	-29.994	673.703960			
17	755.713	55.713	+9.897	986.169	86.169	-27.817				
							2269.678521	7392.739177	3220.987461	4097.866805
							876.859344		876.859344	
							x 1/2 = 438.429672			
2	771.817	71.817	+12.192	984.889	84.889	-31.057				
3	773.867	73.867	-3.522	985.106	85.106	+17.305				
23	768.295	68.295	+3.452	982.194	102.194	+19.762				
22	777.299	77.299	+4.831	984.868	104.868	+16.589				
19	773.126	73.126	-15.644	988.783	118.783	+11.295				
18	761.655	61.655	-1.309	986.163	116.163	-33.894				
							152.057367		2089.734570	
							2310.041951	1894.357684	4320.155139	4735.839206
							415.684267		415.684267	
							x 1/2 = 207.84213354			

面積計算書

工区 3 ブロック 13 計算者 (印) 精算者 (印) 備考 保 3-13-1
3-13-4

点	①	②	③	④	⑤	⑥	③ × ⑤		② × ⑥	
	X	X-(定数)	X _{n-1} -X _{n+1}	Y	Y-(定数)	Y _{n-1} -Y _{n+1}	+	-	+	-
1	-152, 759.367	-152,750 9.367	+ 16.104	-36, 983.563	-36,980 3.583	- 1.280		57.378552	11.989760	
2	771.817	21.817	+ 7.427	984.889	4.889	+ 16.785		36.310603		366.198345
31	766.794	16.794	- 18.644	-37, 990.348	20.348	+ 12.350	379.368112			207.405900
30	753.173	3.173	- 11.081	-36, 997.239	17.239	- 14.179	191.025359		44.989967	
17	755.713	5.713	+ 6.194	986.169	6.169	- 13.676		38.210786	78.130988	
							570,393471	-131,899941	135,110715	573,604295
							438,493530			438,493530
								1/2 = 219,2467		
30	-152, 753.173	-152,740 13.173	+ 17.324	-36, 997.239	-36,990 7.239	- 13.032		125.408436	171.670536	
31	766.794	26.794	+ 8.482	-37, 990.348	10.348	+ 18.924		87.771736		507.049656
18	761.655	21.655	- 17.324	016.163	26.163	+ 13.032	453,247812			282,209960
16	749.470	9.470	- 8.482	013.380	23.380	- 18.924	198.39160		179,210280	
							657,556972	-13,180172	350,880816	789,257616
							438,376800			438,376800
								1/2 = 219,1884		

面積計算書		工区	ブロック	13	計測者	精算者	備考			
		ウ					3. 豊成 462-5 4. 豊成 462-2(10)			
点	①	②	③	④	⑤	⑥	③ × ⑤	② × ⑥		
	X	X-(定数)	X _{n-1} -X _{n+1}	Y	Y-(定数)	Y _{n-1} -Y _{n+1}	+	-	+	-
ウ	-152 773.847	-152.700 773.847	+14.641	-36 986.106	-36.900 85.106	-16.120			1246.032946	1190.413640
4	782.936	82.936	+3.452	986.074	86.074	+19.762			297.127448	1638.981232
22	777.299	77.299	-14.641	-37 984.868	106.868	+16.120	1525.372389			1246.059880
23	768.295	68.295	-3.452	982.194	102.194	-19.762	352.773688		1349.645790	
							1888.146076	1643.164394	2540.059436	2885.04112
							344.981682			344.981682
							× 1/2 = 172.490841			
4	-152 782.936	-152.700 82.936	+35.914	-36 986.074	-36.900 86.074	-30.993			2230.521636	2570.635468
569	799.040	99.040	+16.203	987.790	87.790	+1.728			1422.461370	171.141120
29	799.139	99.139	-11.037	987.802	87.802	+34.391	969.070674			3409.489349
21	788.003	88.003	-26.013	-37 922.181	122.181	+30.981	3178.394353			2726.420943
19	773.126	73.126	-5.067	918.783	118.783	-36.107	601.873461		2640.36068	
							4749.238488	3652.983206	5210.795936	6307.051612
							1096.255482			1096.255482
							× 1/2 = 548.127741			

面積計算書		工区	ブロック	13	計測者	精算者	備考	5. 屋敷 452 (1)		
点	①	②	③	④	⑤	⑥	③ × ⑤	② × ⑥		
	X	X-(定数)	X _{n-1} -X _{n+1}	Y	Y-(定数)	Y _{n-1} -Y _{n+1}	+	-	+	-
29	-152 799.139	-152.700 99.139	+23.903	-36 997.802	-36.700 87.802	-32.977			2098.731206	3259.392903
K70	811.906	111.906	+15.741	989.304	89.304	-8.021			1405.734264	4877.598026
K71	814.880	114.880	+5.734	979.781	79.781	-17.554			457.464214	12016.603520
K72	817.640	117.640	+15.437	971.750	71.750	+3.214			1107.604750	378.094960
II	830.317	130.317	+2.057	982.995	82.995	+57.670			170.720715	7515.381390
5	819.697	119.697	-42.314	129.420	129.420	+37.186	5476.277880			4690.466642
21	788.003	88.003	-20.558	122.181	122.181	-41.618	2511.796998			3662.508844
							7988.074878		5240.255189	9.836.103303
										12583.922992
							2747.819689			2747.819689
										x 1/2 = 1373.9098445

面積計算書		工区	ウ	ブロック	13	計測者	精算者	備考	6. 未指定地(保) 3-13-3		7. 造成 45-1-1	
点	①	②	③	④	⑤	⑥	③ × ⑤	② × ⑥				
	X	X-(定数)	X _{n-1} -X _{n+1}	Y	Y-(定数)	Y _{n-1} -Y _{n+1}	+	-	+	-		
20	⁻¹⁵² 784.602	^{-152.700} 84.602	+ 38.531	⁻³⁷ 021.606	^{-37.} 21.604	- 6.997			824.717524	591.960194		
5	819.697	119.697	+ 31.660	029.420	29.420	+ 23.032			931.637200		2756.861304	
6	816.262	116.262	- 38.531	066.636	66.436	+ 6.997	1712.153516				813.485214	
26	781.166	81.166	- 31.660	036.417	36.417	- 23.032	1152.962220			1869.415312		
									2865.125736	1756.154724	2461.375506	3570.346518
									1108.971012			1108.971012
										$\frac{1}{2} = 554.48$		
24	⁻¹⁵² 781.166	^{-152.700} 81.166	+ 40.985	⁻³⁷ 036.417	^{-37.} 36.417	- 17.717			1492.550765	1438.018022		
6	816.262	116.262	+ 29.207	066.636	66.436	+ 33.762			1297.842252		3925.237644	
7	810.373	110.373	- 40.985	070.179	70.179	+ 17.717	2876.286315				1955.478441	
27	775.277	75.277	- 29.207	062.153	62.153	- 33.762	1815.302671			2561.502074		
									4691.588984	2790.392997	3979.520096	5880.716085
									1901.195989			1901.195989
										$\frac{1}{2} = 950.59$		

面積計算書		工区	ブロック	13	計算者	精算者	備考	8. 墨成 45-1-2		9. 墨成 462-2 (1)	
点	①	②	③	④	⑤	⑥	③ ×	⑤	② ×	⑥	
	X	X-(定数)	X _{n-1} -X _{n+1}	Y	Y-(定数)	Y _{n-1} -Y _{n+1}	+	-	+	-	
27	⁻¹⁵² 775.277	^{-152,700} 75.277	+ 42.123	⁻³⁷ 62.153	⁻³⁷ 62.153	- 22.680		2613.070819		1707.282360	
7	810.373	110.373	+ 28.070	70.179	70.179	+ 38.741		1969.924530		4275.960393	
8	803.347	103.347	- 42.123	100.894	100.894	+ 22.680		4249.957962		2343.909960	
28	768.250	68.250	- 28.070	92.859	92.859	- 38.741		2606.557130		2644.073250	
								6856.510092		4587.995349	
								4371.355610		6619.870353	
								2268.514743		2268.514743	
								1/2 = 1134.25			
14	⁻¹⁵² 760.771	^{-152,700} 40.771	+ 42.844	⁻³⁷ 51.292	⁻³⁷ 51.292	- 25.482		2197.554448		1038.926622	
26	775.924	75.924	+ 27.479	59.326	59.326	+ 41.567		1670.219154		3155.932908	
28	768.250	68.250	- 42.844	92.859	92.859	+ 25.482		3978.450996		1739.146500	
13	723.080	33.080	- 27.479	84.808	84.808	- 41.567		2336.439032		1375.036360	
								6308.890028		3827.772602	
								2481.116426		2481.116426	
								1/2 = 1240.55			

面積計算書		工区	ブロック	13	計算者	大森	精算者	備考		
								10. 豊成 398-1 (4)		
								11. 未指定地(保) 3-13-2		
点	①	②	③	④	⑤	⑥	③ × ⑤	② × ⑥		
	X	X-(定数)	X _{n-1} -X _{n+1}	Y	Y-(定数)	Y _{n-1} -Y _{n+1}	+	-		
15	⁻¹⁵² 763.320	^{-152.700} 43.320	+ 37.696	⁻³⁷ 060.182	⁻³⁷ 40.182	- 3.079	1514.700672	133.382280		
25	778.467	78.467	+ 32.604	048.213	48.213	+ 19.144	1571.936652	1502.172248		
26	775.924	75.924	- 37.696	059.226	59.226	+ 3.079	2236.352896	233.769996		
14	740.771	40.771	- 32.604	051.292	51.292	- 19.144	1672.324368	780.520024		
							3908.677264	3086.637324	913.902304	1735.942244
							822.039940		822.039940	
							$\frac{1}{2} = 41.01$			
16	⁻¹⁵² 769.470	^{-152.700} 49.470	+ 41.282	⁻³⁷ 013.380	⁻³⁷ 13.380	- 18.778	552.353160	928.947660		
20	784.602	84.602	+ 28.997	021.606	21.606	+ 34.833	620.651788	2946.941466		
25	778.467	78.467	- 41.282	068.213	48.213	+ 18.778	1990.329066	1473.653326		
15	763.320	43.320	- 28.997	060.182	40.182	- 34.833	1165.157454	1508.965560		
							3155.486520	1173.004948	2437.913220	4420.394792
							1982.481572		1982.481572	
							$\frac{1}{2} = 991.24$			

面積計算書						工区	ブロック	計測者	備考
						Ⅲ	Ⅲ		隅切Ⅰ,Ⅲ
点	①	②	③	④	⑤	⑥	③ × ⑤	② × ⑥	
	X	X-(定数)	X _{n-1} -X _{n+1}	Y	Y-(定数)	Y _{n-1} -Y _{n+1}	+	-	
I	⁻¹⁵² 756.384	^{-152.750} 6.384	+ 3.654	^{-36.980} 983.265	^{-36.980} 3.265	-2.606	11.857230	16.636706	
1	759.367	9.367	-0.671	983.563	3.563	+2.924	12.390773	27.389109	
17	755.713	5.713	-2.983	986.169	6.169	-0.318	18.402127	1.816734	
							20.792900	11.857230	
							8.935670	18.453438	
							× 1/2 = 4.467835		
9	⁻¹⁵² 803.124	^{-152.790} 13.124	+ 2.924	⁻³⁷ 101.869	^{-37.100} 1.869	+ 0.670	5.464956	8.793080	
Ⅲ	802.455	12.455	-3.593	104.794	4.794	+ 2.255	17.224842	28.086025	
10	799.531	9.531	+ 0.669	104.124	4.124	-2.925	2.758956	27.878175	
							17.224842	8.223912	
							9.000930	27.878175	
								36.879105	
								9.000930	
							1/2 = 4.500		

面積計算書		工 区	ω	ブ ロ ック	12	計 算 者	精 算 者	備 考	陽 切 刀	
点	①	②	③	④	⑤	⑥	③	⑤	②	⑥
	X	X-(定数)	X _{n-1} -X _{n+1}	Y	Y-(定数)	Y _{n-1} -Y _{n+1}	+	-	+	-
11	⁻¹⁵² 735.110	^{-152.730} 5.110	+ 0.671	⁻³⁷ 089.376	^{-37.080} 9.376	- 2.924			6.291296	14.941640
12	732.857	2.857	- 2.924	085.783	5.783	- 0.669	16.909492		1.911333	
13	732.186	2.186	+ 2.253	088.707	8.707	+ 3.593		19.616871		7.854298
							16.909492	125.908167	16.852973	7.854298
							8.998675			8.998675
								1/2 = 4.499		

計年月
算日

計算者



検査者

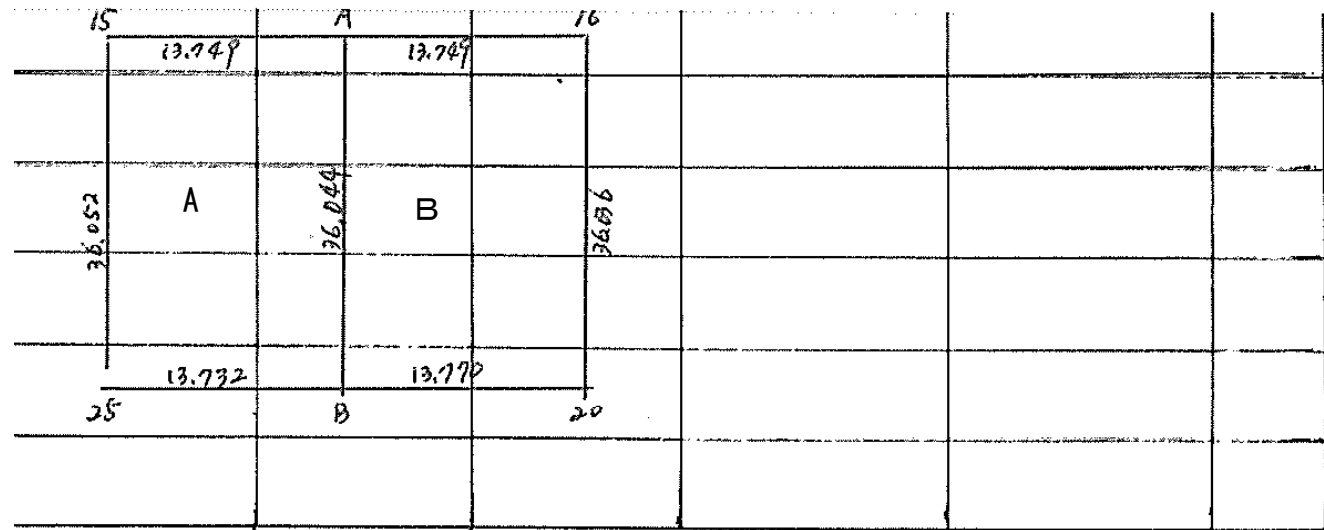


B.NO. 13

各筆面積計算書

地番	算式	隅切	地積	摘要
	未指定地(保) 3-13-1 3-13-4		438.42	218.24 218.18
	豊成 46296		207.84	
	豊成 46295		172.49	
	豊成 46292 (B)		548.12	
	豊成 452 (A)		1,373.90	
	未指定地(保) 3-13-3		554.48	
	豊成 45101		950.59	
	豊成 45102		1,134.25	
	豊成 46292 (B)		1,240.55	
	豊成 39891 (B)		411.01	
	未指定地(保) 3-13-2		991.24	
	水路		279.34	
	計		8,302.23	
	全体		8,302.35	
	差		-0.12	
	換地		6,038.75	
	保留地		1,984.14	
	水路		279.34	

保留地3-13-2



計算者

臭検者

