

BLOCK NO. 32

街 区 計 算

街区略図

工区

3

ブロック

66³⁰

記入者



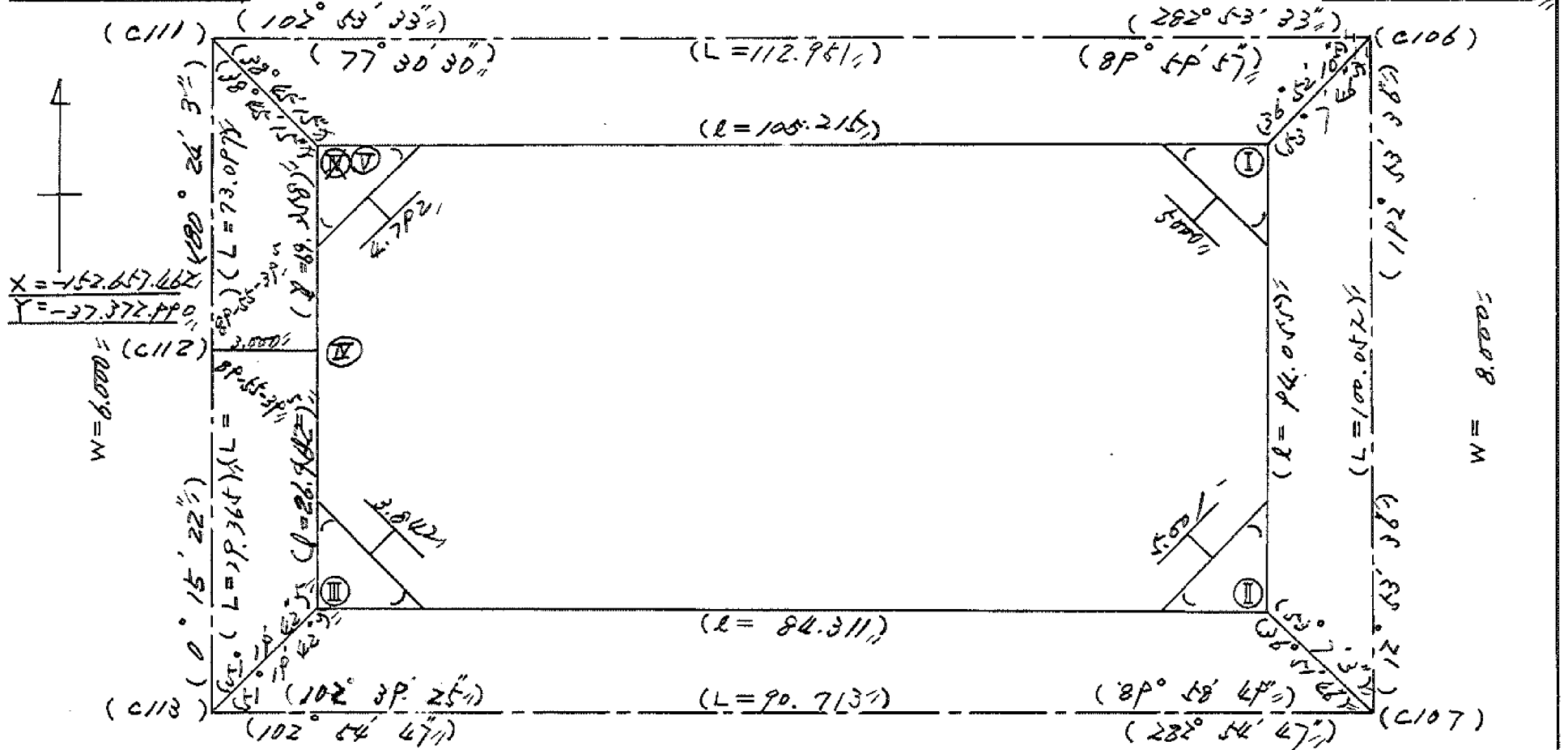
点検者



$X = -152.596.365$
 $Y = -37.372.479$

$W = 6.000$

$X = -152.609.567$
 $Y = -37.262.375$



$X = -152.657.662$
 $Y = -37.372.490$

$W = 6.000$

$X = -152.686.828$
 $Y = -37.373.121$

$W = 6.000$

$X = -152.707.100$
 $Y = -37.284.702$

面積計算書

工
区

ウ

ブ
ロ
ック

66

計
算
者

足
守

精
算
者

備
考

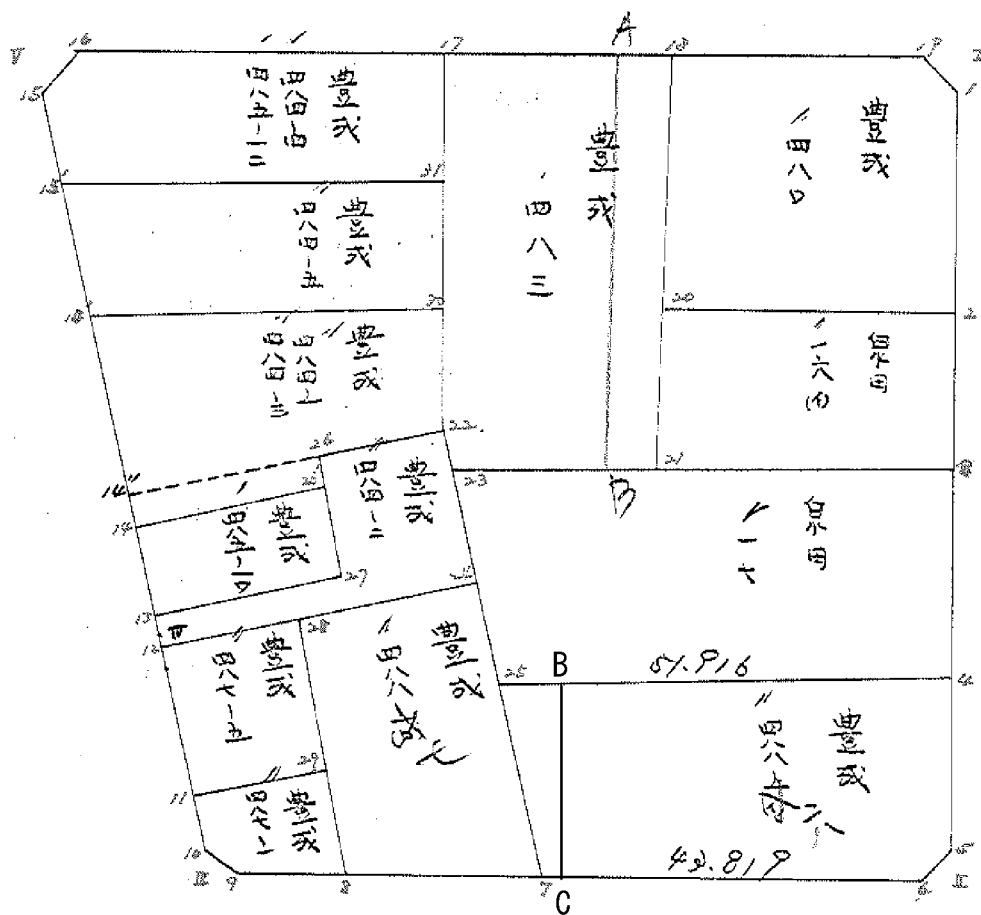
備
考

全
体

点	①	②	③	④	⑤	⑥	③ ×	⑤	② ×	⑥
	X	X-(定数)	X _{n-1} -X _{n+1}	Y	Y-(定数)	Y _{n-1} -Y _{n+1}	+	-	+	-
I	-152.611.599	-152.500	+115.159	-37.266.963	-37200	66.9437	81.574		7709.088	937,9103.576.826
II	-152.703.282	203.282	+72.842	-37.287.932	87.932	+103.168			6405.102.744	20972.197376
III	-152.686.641	-184.441	-45.803	-37.370.111	170.111	+82.058	7791.594.133			15134.859578
IV	-152.657.679	-157.479	-96.318	-37.369.990	169.990	+0.605	16393.096820		95.274.795	
V	-152.588.123	88.123	+45.880	-37.369.506	169.506	+103.047	7776.935280		9080.810781	
							71941.626233	14114.23168	1827.966240	36107.056954
							17827.394552			17827.394552
										1/2 = 8913.697276
										8,913.69 (4.50 + 4.50 + 4.39 + 4.39) = 8,895.91

面地計算

D.N.O. 66



面積計算書

工区 ブロック 計算者 精算者 備考 豊成 480 泉明 160

点	①	②	③	④	⑤	⑥	③ × ⑤		② × ⑥	
	X	X-(定数)	X _{n-1} -X _{n+1}	Y	Y-(定数)	Y _{n-1} -Y _{n+1}	+	-	+	-
1A	-152,610.727	-152,600 10.227	+10.290	-37,269.868	-37,200 69.868	-31.513			718.941720	3444.05577
1	-152,614.523	14.523	+29.323	-37,267.612	67.612	+3.634			1,987.586676	52.776582
2	-152,640.252	40.252	+18.357	-37,273.502	73.502	+38.082			1,347.276214	1,532.876664
20	-152,632.820	32.880	-36.019	-37,305.644	105.694	+25.623	3,806.992186			847.484240
18	-152,604.233	4.233	-21.951	-37,299.125	99.125	-35.826	2,195.897875			151.651458
							5,982.885061	4,050.804610	4,960.57035	2,428.137486
							1,932.080451			1,932.080451
									$\frac{1}{2} = 966.0402255$	
2	-152,640.252	-152,600 40.252	+24.918	-37,273.502	-37,200 73.502	-28.175			1,831.522836	1,134,100,100
3	-152,657.718	57.798	+10.170	-37,277.518	77.519	+36.214			788.368230	2,023.096772
21	-152,650.422	50.422	-24.918	-37,309.716	109.716	+28.175	2,733.923288			1,470.639850
20	-152,632.880	32.880	-10.170	-37,305.644	105.694	-36.214	1,074.907980			1,190.716320
							3,808.811268	2,619.891066	2,324.816420	3,513.736622
							1,188.920202			1,188.920202
									$\frac{1}{2} = 594.460101$	

面積計算書						工区	ブロック	計算者	精算者	備考	累田 豊成	17 488-1
点	①	②	③	④	⑤	⑥	③ × ⑤		② × ⑥			
	X	X-(定数)	X _{n-1} -X _{n+1}	Y	Y-(定数)	Y _{n-1} -Y _{n+1}	+	-	+	-		
3	-152,657.798	-152,600 57.798	+35.864	-37,277.519	-37,200 77.519	-50.439		2,780.141416		2,915.273322		
4	-152,680.295	80.895	+11.490	-37,282.807	82.807	+55.890		951.452430			4,521.221500	
25	-152,669.288	69.288	-35.864	-37,333.409	133.409	+50.439	4,784.580376				3,494.819432	
23	-152,645.031	45.031	-11.490	-37,333.246	133.246	-55.890	1,530.996540			2,516.782590		
							6,315.576916	3,731.593846	5,432.055912	8,016.038982		
							2,583.983070				2,583.983070	
									1/2 = 1.291.991535			
4	-152,680.295	-152,600 80.895	+31.070	-37,282.807	-37,200 82.807	-46.146		2,572.813490		3,732.980670		
5	-152,700.358	100.358	+21.720	-37,287.263	87.263	+8.049		1,895.352360			801.781512	
6	-152,702.615	102.615	-7.539	-37,290.856	90.856	+46.304	684.963384				4,751.484960	
7	-152,692.819	92.819	-33.327	-37,333.567	133.567	+42.553	4,451.387409				3,949.726907	
26	-152,669.288	69.288	-11.924	-37,333.409	133.409	-50.760	1,590.768916			3,517.058880		
							6,727.119709	4,468.165850	7,250.039550	9,508.993407		
							2,258.953859				2,258.953859	
									1/2 = 1.129.4769295			
							分筆後一部資料なし					

豊成488-15

(川・0才計) 和歌藩田圃測計圖 (計測の経緯)

1 点名	2 計 NO	3 x_m	4 y_m	5 $\frac{x_m - x_{m-1}}{= (x')}$	6 $\frac{y_{m+1} - y_m}{= (y')}$	7 $(x') \times (y') = (x_m - x_{m-1})(y_{m+1} - y_m)$	
						7-1 (-)	7-2 (+)
25	1	-152669.29	-37333.41	0.00		0.0000	0.0000
B	2	-152671.47	-37323.90	2.18	+ 4.39	9.5702	
C	3	-152693.85	-37329.02	24.56	- 9.67		237.4952
7	4	-152692.82	-37333.87	28.53	- 4.39		103.2967
	5						

面積測定座標計算法

	3407919.1
8 (7) - (5)	9.5702
倍面積 2S	331.2217
面積 S	165.6108

GP-0

面積計算書										工区	ブロック	計測者	精算者	備考	備考
順	①	②	③	④	⑤	⑥	③	⑤	②	⑥					
	X	X-(定数)	X _{n-1} -X _{n+1}	Y	Y-(定数)	Y _{n-1} -Y _{n+1}	+	-	+	-					
7	-152,672.21	-152,600 92.819	+29.423	-37,333.567	-37,300 33.567	+20.197									
8	-152,688.241	88.241	-34.134	-37,353.535	53.535	+19.774	1,827,363,680								
28	-152,658.685	58.685	-29.423	-37,353.241	53.341	-20.197	1,569,452,243		1,185,269,45						
24	-152,658.818	58.818	+34.134	-37,333.338	33.338	-19.774		1,137,959,292	1,163,067,132						
							3,396,815,933	2,125,601,133	2,348,328,077	3,619,542,877					
							1,271,214,800			1,271,214,800					
									1/2 = 635,6074						
8	-152,688.241	-152,600 88.241	+9.640	-37,353.535	-37,350 3.535	+13.736			34,077,400	1,212,078,376					
9	-152,685.112	85.112	-6.800	-37,367.187	17.187	+16.563	116,871,600			1,409,710,056					
10	-152,681.441	81.441	-9.762	-37,370.098	20.098	+2.883	196,196,676			234,774,403					
11	-152,675.350	75.350	-5.969	-37,370.070	20.070	-16.647	119,797,830		1,254,351,450						
29	-152,675.672	75.472	+12.891	-37,353.451	3.451	-16.535		44,486,841	1,247,929,520						
							432,866,106	78,564,241	7,502,280,970	7,256,582,835					
							354,301,865			354,301,865					
									1/2 = 177,150,9325						

488-7
487-7

面積計算書

工
区

ブ
ロ
ック

計
算
者

精
算
者

備
考

488-7

点	①	②	③	④	⑤	⑥	③ × ⑤		② × ⑥	
	X	X - (定数)	X _{n-1} - X _{n-2}	Y	Y - (定数)	Y _{n-1} - Y _{n-2}	+	-	+	-
P ₂	-152,665.394	^{152,600} - 65.394		-37,350.383	^{37,300} - 50.383					
25	-152,669.288	- 69.288	27.425	-37,333.409	- 33.409	- 16.816		916.241825	1165.147008	
7	-152,692.819	- 92.819	19.644	-37,333.567	- 33.567	+ 17.114		659.390148		1588.504366
P ₃	-152,688.932	- 88.932	-27.425	-37,350.523	- 50.523	+ 16.816	1385.593275			1295.490512
P ₂	-152,665.394	- 65.394	-19.644	-37,350.383	- 50.383	- 17.114	989.723652		1119.152916	
25	-152,669.288	- 69.288		-37,333.409	- 33.409		2375.316927	1575.631973	2284.299924	3083.984878
							779.684954			779.684954
								1/2 399.842 m ²		
								577.80		

面積計算書

工
区

ブ
ロ
ック

計
算
者

精
算
者

備
考

豊成488-10
豊成488-11

点	①	②	③	④	⑤	③ × ⑤		② × ⑥		
	X	X - (定数)	X _{n-1} - X _n	Y	Y - (定数)	Y _{n-1} - Y _n	+	-	+	-
28	-152,658.685	-58.685		-37,353.341	-53.341					
24	-152,659.818	-58.818	10.603	-37,333.338	-33.338	-19.932		353.482814	1172.360376	
25	-152,669.288	-69.288	5.897	-37,333.409	-33.409	20.043		197.012873		1388.739384
P ₁	-152,664.715	-64.715	-10.603	-37,353.381	-53.381	19.932	565.998743			1289.899380
28	-152,658.685	-58.685	-5.897	-37,353.341	-53.341	-20.043	314.551877		1176.223455	
24	-152,658.818	-58.818		-37,333.338	-33.338		880.550620	530.495687	2348.583830	2678.638764
							330.054933			330.054933
								1/2 165.027 m ²		
P ₁	-152,664.715	-64.715		-37,353.381	-3.381			165.00		
P ₂	-152,665.394	-65.394	24.217	-37,350.383	-0.383	-2.858		9.275111	186.896052	
P ₃	-152,688.932	-88.932	22.847	-37,350.523	-0.523	3.152		11.948981		280.313664
B	-152,688.241	-88.241	-24.217	-37,353.535	-3.535	2.858	85.607095			252.192798
P ₁	-152,664.715	-64.715	-22.847	-37,353.381	-3.381	-3.152	77.245707		203.981680	
P ₂	-152,665.394	-65.394		-37,350.383	-0.383		162.852802	21,224092	390.877732	32,506442
							141.628710			141.628710
								1/2 70.814 m ²		
								70.80		

面積計算書		工区	ウ	ブロック	22 66	計算者	精算者	備考	量或 427-5 424-2
点	①	②	③	④	⑤	⑥	③ × ⑤	② × ⑥	
	X	X-(定数)	X _{n-1} -X _{n+1}	Y	Y-(定数)	Y _{n-1} -Y _{n+1}	+ -	+ -	
11	-152,676.350	-152,650 25.350	-16.898	-37,370.070	-37,350 20.070	+16.544	339.142860	419,390400	
12	-152,668.574	8.574	-16.665	-37,369.995	19.995	-16.729	333.216675	143,434446	
28	-152,658.625	8.685	+16.898	-37,353.341	3.341	-16.544	564.56218	143,684640	
29	-152,675.472	25.472	+16.665	-37,353.451	3.451	+16.729	37.510915	426,71088	
							672.359535	113.969133	
							558.392402	287,119086	
								845.511488	
								558.392402	
								1/2 = 279.196201	
12	-152,658.574	-152,600 58.574	-1.339	-37,369.995	-37,300 69.995	+36.652	93.723305	2,146.854248	
TV	-152,657.479	57.479	-2.000	-37,369.990	69.990	-0.011	139.980000	0.632269	
13	-152,656.574	56.574	-0.761	-37,369.984	69.984	-21.656	53.257824	1,225.166544	
27	-152,656.718	56.718	-16.361	-37,348.334	48.334	-21.766	790.992574	1,234.573988	
26	-152,640.213	40.213	-16.400	-37,348.218	48.218	-15.120	790.775200	608,020560	
22	-152,640.318	40.318	+18.605	-37,333.214	33.214	-14.880	617.946470	599.931840	
24	-152,658.818	58.818	+18.256	-37,333.338	33.338	+36.781	608.618528	2,163.384858	
							1,868.528903	1,226.564998	
							3668.275201	4,310.239106	
							641.963905	641.963901	
								1/2 = 320.9819525	

面積計算書						工区	ブロック	計算者	新算者	備考	巻次	485-10	484-1, 484-3
点	①	②	③	④	⑤	③ × ⑤		② × ⑥					
	X	X-(定数)	X _{n-1} -X _{n+1}	Y	Y-(定数)	+	-	+	-				
		-152,600			-37,300								
13	-152,656.574	56.574	-12.257	-37,369.984	69.984	+ 21.565		857.793888	1,220.018310				
14	-152,644.461	44.461	-11.960	-37,369.899	69.899	- 21.735		835.992040	966.359835				
26	-152,644.614	44.614	+ 12.257	-37,348.249	48.249	- 21.565		591.387993	962.100910				
27	-152,656.718	56.718	+ 11.960	-37,348.334	48.334	+ 21.735		578.074640	1,232.765730				
								1,693.785928	1,169.462633				
								524.323295	2,452.784090				
									524.323295				
									$\frac{1}{2} = 262.1616475$				
		-152,600			-37,300								
14	-152,644.461	44.461	+ 26.188	-37,369.899	69.899	- 21.468		1,830.515012	954.488748				
26	-152,644.614	44.614	- 4.248	-37,348.249	48.249	- 21.681		204.961752	967.276134				
26	-152,640.218	40.213	- 4.296	-37,348.218	48.218	- 15.035		207.144528	604.602455				
22	-152,640.318	40.318	- 12.763	-37,333.214	33.214	- 19.956		423.910282	723.950008				
30	-152,627.450	27.450	- 21.892	-37,320.262	30.262	+ 36.503		667.495704	1,002.007350				
14	-152,618.426	18.426	+ 17.011	-37,369.717	69.717	+ 39.637		1,185.955387	730.351362				
								1,498.512266	3,014.470899				
								3,250.317345	1,732.358712				
								1,519.958633	1,517.958633				
									$\frac{1}{2} = 758.9793165$				

面積計算書

工区

3

ブロック

32

計算者

精算者

備考



484-1
484-3

点	①	②	③	④	⑤	⑥	③ × ⑤		② × ⑥	
	X	X - (定数)	X _{n-1} - X _{n+1}	Y	Y - (定数)	Y _{n-1} - Y _{n+1}	+	-	+	-
14'	-152 618.426	-152.610 8.426	-12.612	-37 369.717	-37.338 39.717					500.910.804
30	627.450	17.450	+21.892	330.262	0.262		5.735704			
22	640.318	30.318	+12.612	333.214	3.214		40.534968			
14'	640.062	30.062	-21.892	369.868	39.868					892.790256
							46.290672			1373.701060
										1327430388
										$\frac{1}{2} = 663.71$

面積計算書

工区

3

ブロック

32

計算者

精算者

備考

豊成484-6

点	①	②	③	④	⑤	⑥	③ × ⑤		② × ⑥	
	X	X - (定数)	$X_{n-1} - X_{n+1}$	Y	Y - (定数)	$Y_{n-1} - Y_{n+1}$	+	-	+	-
14"	-152. 640.062	-152. 640.062	-4.248	-37. 369.868	-37. 340.868					
26	640.213	0.213	+4.552	348.218	8.218		37.608376			
26'	644.614	4.614	+4.248	348.249	8.249		35.041752			
14	644.461	4.461	-4.552	369.899	29.899					
								126.879264		
								72.450088		
								126.100268		
								72.450088		
								190.528424		

$$\frac{1}{2} = 95.26$$

面積計算書		工区	ブロック	計測者	精算者	備考	畧称	
				32 66			484-5 484-4, 485-12	
点	① X	② X-(定数)	③ X _{n-1} -X _{n+1}	④ Y	⑤ Y-(定数)	⑥ Y _{n-1} -Y _{n+1}	③ × ⑤ + -	② × ⑥ + -
14'	-152,618.426	-152,600 18.426	-22.453	-37,369.717	-37,300 69.717	+39.362	1,565.355801	725.284212
15'	-152,604.997	4.997	-3.752	-37,369.624	69.624	-42.387	261.229248	211.807839
31	-152,614.674	14.674	+22.453	-37,327.330	27.330	-39.362	613.640490	577.577788
30	-152,627.450	27.450	+3.752	-37,380.262	30.262	+42.387	113.543024	1,163.523150
							1,826.585049	727.183514
							1,099.401535	1,888.807362
								1,099.401535
								$\frac{1}{2} = 549.7007675$
15'	-152,604.997	-152,500 104.997	-23.551	-37,369.624	-37,300 69.624	+42.199	1,639.714824	4430.558409
15	-152,541.123	91.123	-16.205	-37,369.527	69.527	-3.042	1,126.685035	277.196166
16	-152,588.792	28.792	+7.497	-37,366.582	66.582	-45.880	499.165254	4072.776910
17	-152,548.620	98.620	+25.882	-37,323.647	23.647	-39.252	612.031654	3,871.032240
31	-152,614.674	114.674	+6.377	-37,327.330	27.330	+45.977	174.283410	5,272.366498
							2,766.399859	1,285.480318
							8,222.005366	9,702.924907
							1,480.919541	1,480.919541
								$\frac{1}{2} = 7404597705$
分筆後の座標なし								

面積計算書		工区	ω	ブロック	計算者	精算者	備考	式	483	
点	①	②	③	④	⑤	⑥	③ × ⑤	② × ⑥		
	X	X-(定数)	X _{n-1} -X _{n+1}	Y	Y-(定数)	Y _{n-1} -Y _{n+1}	+ -	+ -		
17	-152,598.620	^{-152,500} 98.620	-36.085	-37.223647	^{-37,200} 123.647	-34.089	4461.801995	3,361.857180		
18	-152,604.233	104.233	+51.802	-37.249.125	99.125	-13.981	5,134.873250	1,452.069923		
21	-152,650.422	150.422	+40.798	-37.209.716	109.716	+34.121	4,476.193368	5,132.549062		
23	-152,645.031	145.031	-10.104	-37.233.246	133.246	+23.498	1,346.219584	3,407.938438		
22	-152,640.318	140.318	-46.411	-37.233.214	133.214	-9.599	6,182.594954	1,346.912487		
							11,990714553	9,611.066618	6,160.839585	8,540.487500
							2,379.647915		2,379.647915	
									$\frac{1}{2} = 11,878.239575$	

面積計算書

工区

W

ブロック

22
86

計算者

精算者



備考

陽切

I

II

点	①	②	③	④	⑤	⑥	③ × ⑤		② × ⑥		
	X	X-(定数)	X _{n-1} -X _{n+1}	Y	Y-(定数)	Y _{n-1} -Y _{n+1}	+	-	+	-	
I	-152,611.599	-152,600 11.599	+3.594	-27,266.943	-37,280 6.943	-2.256			24,953,142	26,167,344	
I	-152,614.523	14.523	-0.670	-27,267.612	7.612	+2.925	5,100,040				42,499,775
IP	-152,610.929	10.929	-2.924	-27,269.862	9.868	-0.669	28,854,032			7,311,501	
							33,954,072	24,953,142	33,478,225		42,479,775
							7,000,930				9,000,930
									1/2 = 4,500,465		
5	-152,700.358	-152,700 0.358	+0.670	-27,287.263	-37,280 7.263	-2.924			4,866,210	1,046,792	
II	-152,703.282	3.282	+2.254	-27,287.932	7.932	+3.593			19,878,728		11,792,226
6	-152,702.612	2.612	-2.924	-27,290.856	10.856	-0.669	31,742,944			1,747,428	
							31,742,944	22,744,938	2,794,220		11,792,226
							8,990,006				8,990,006
									1/2 = 4,495,003		

面積計算書							工区	ブロック	計算者	精算者	備考
点	①	②	③	④	⑤	⑥	③ × ⑤		② × ⑥		
	X	X-(定数)	X _{n-1} -X _{n+1}	Y	Y-(定数)	Y _{n-1} -Y _{n+1}	+	-	+	-	
10	-152,681.441	-152,680 1.441	+ 0.671	-37,370.098	-37,300 70.098	- 2.924		49.035758	4.213484		
Ⅰ	-152,685.112	5.112	+ 3.000	-37,367.187	67.187	+ 0.013		201.561000		0.066456	
Ⅱ	-152,684.441	4.441	- 3.671	-37,370.111	70.111	+ 2.911	257.377481			12.927751	
							257.377481	248.596758	4.213484	12.994207	
							8.780723			8.780723	
									$\frac{1}{2} = 4.3903615$		
15	-152,581.123	-152,580 11.123	- 0.669	-37,369.527	-37,360 9.527	+ 2.924	6.373563			32.523652	
Ⅲ	-152,588.123	8.123	- 2.931	-37,369.506	9.506	- 2.945	22.158486		23.922235		
16	-152,588.712	8.712	+ 3.000	-37,366.582	6.582	+ 0.021		19.746000		0.184632	
							28.532049	19.746000	23.922235	32.708284	
							8.786049			8.786049	
									$\frac{1}{2} = 4.3930245$		

計年月
算日

計算者



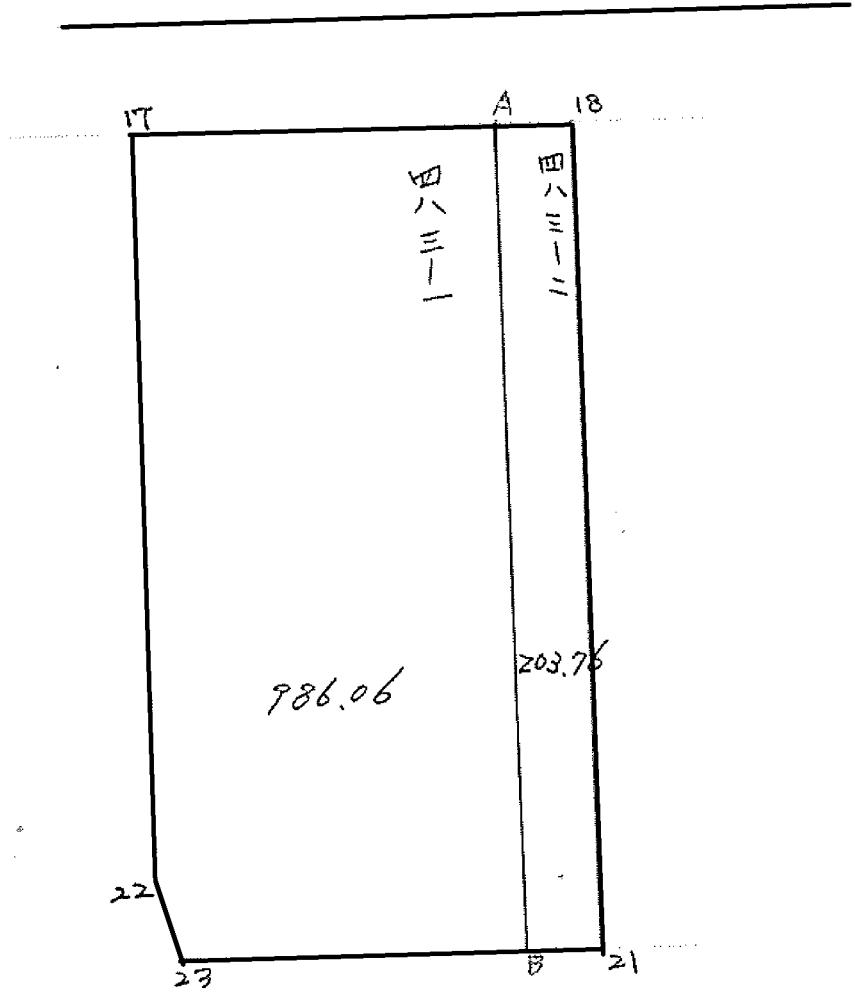
検査者



B. NO. ~~26~~²⁶

各筆面積計算書

地番	算式	隅切	地積	摘要
	豊成 480		966.04	
	泉田 16(1)		594.46	
	泉田 17		1291.99	
	豊成 488(1)(1)		1129.47	
	豊成 488(1)(2)		635.60	
	豊成 487(1)		177.15	
	豊成 487(2)		279.19	
	豊成 484(2)		320.98	
	豊成 485(10)		262.16	484-1 663.71 484-3
	豊成 484(1) 484(3)		758.97	
	豊成 484(5)		549.70	484-6 95.26
	豊成 484(4) 485(12)		740.45	
	豊成 483		1189.82	
	計		8,895.98	
	全体		8,895.91	
		差	+ 0.07	



面積計算書

工
区

3

プロ
ック

32

計
算
者

精
算
者

備
考

483-1

点	①	②	③	④	⑤	⑥	③ × ⑤	② × ⑥
	X	X - (定数)	X _{n-1} - X _n	Y	Y - (定数)	Y _{n-1} - Y _n	+	-
17	-152 598.620	-152.590 8.620	-37.045	37 323.647	37.300 23.647			876.003115
A	603.273	13.273	+50.842	303.317	3.317		168.642914	
B	649.462	59.462	+41.758	313.907	13.907		580.728506	
23	645.031	55.031	-9.144	323.246	33.246			304.001424
22	640.318	50.318	-46.411	323.214	33.214			1541.494954
							749.371420	2721.499493
								1972.128073
							1/2 = 986.06	
							分筆後の座標なし	

面積計算書

工
区

3

ブ
ロック

32

計
算
者

精
算
者

備
考

豊 483-2

点	①	②	③	④	⑤	⑥	③	×	⑤	②	×	⑥
	X	X - (定数)	X _{n-1} - X _n	Y	Y - (定数)	Y _{n-1} - Y _n	+		-	+		-
A	-152 603.273	-152-600 3-273	-45.229	-37 303.317	-37-290 13-317							602.314593
18	604.233	4-233	+47.149	299.125	9.125		630.234625					
21	650.422	50-422	+45.229	309.716	19.716		391.734964					
B	649.462	49-462	-47.149	313.907	23.907							1127.191143
							1321.969589					1728.505736
												407.536147
												$\frac{1}{2} = 203.76$