

BLOCK NO. 22

街区計算

街区略図

工区

5

ブロック

52 Z2

記入者



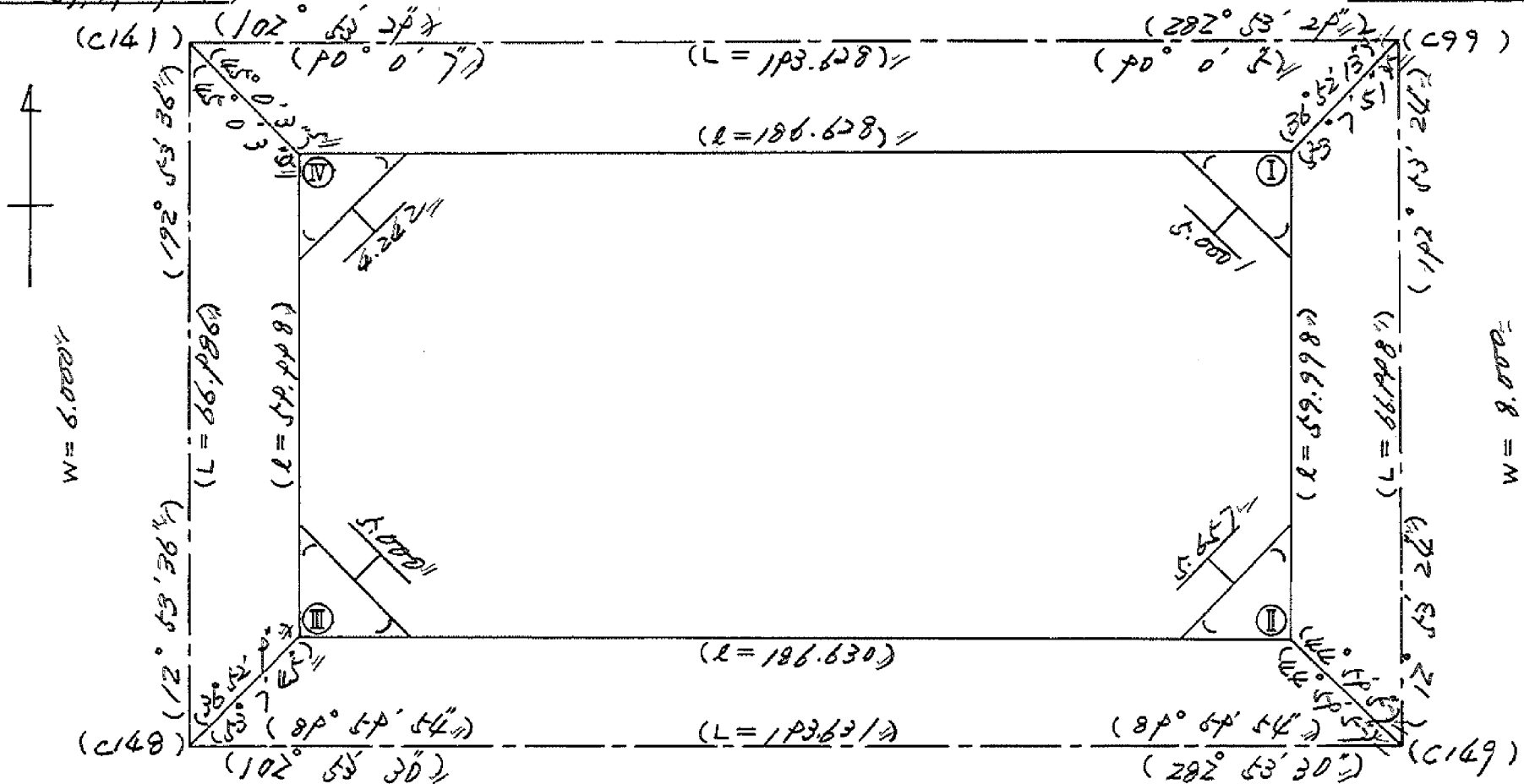
点検者



X = -152.306.167
Y = -37.142.725

W = 6.000

X = -152.349.367
Y = -37.004.178



X = -152.371.676
Y = -37.207.874

W = 8.000

X = -152.416.577
Y = -37.019.124

面積計算書

工
区

ル

ブ
ロ
ック

5622

計
算
者



精
算
者



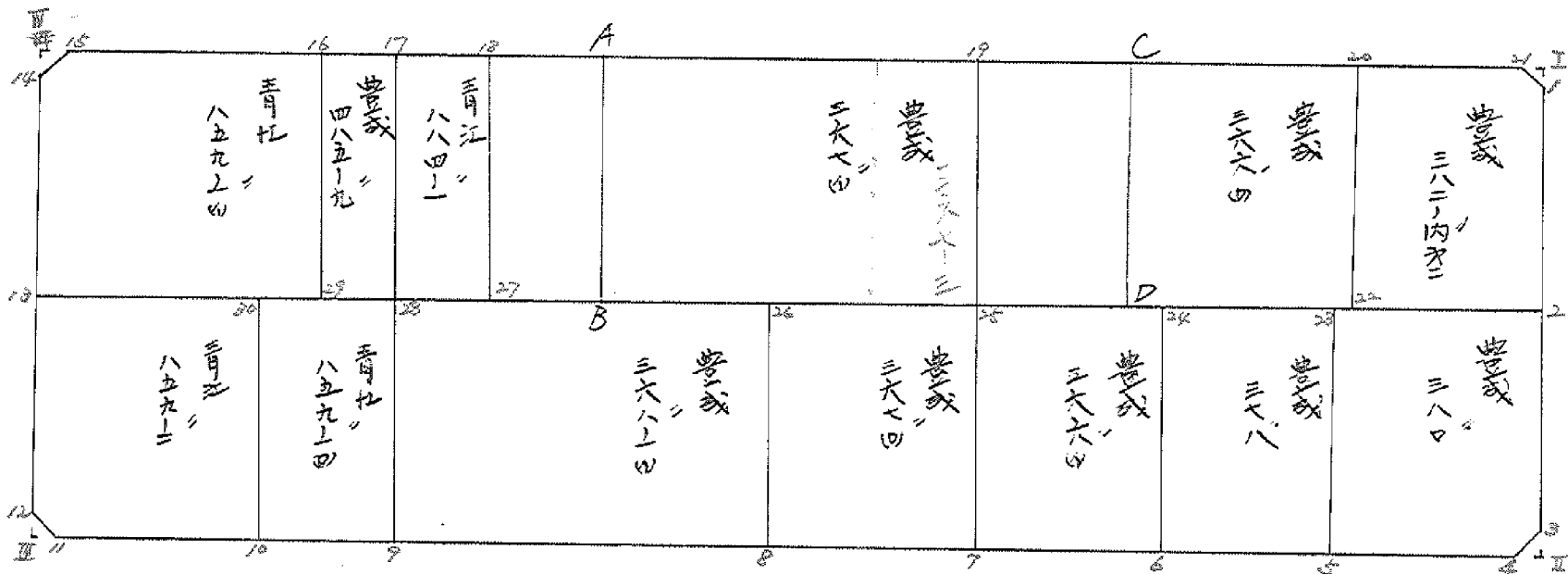
備
考

全体

点	①	②	③	④	⑤	⑥	③ ×	⑤	② ×	⑥
	X	X-(定数)	X _{n-1} -X _{n+1}	Y	Y-(定数)	Y _{n-1} -Y _{n+1}	+	-	+	-
I	-152.25/599	-152.300 51.399	+100.125	-37.008.766	-37.000 8.726	-168.539		870.693 250		8662.736 061
II	-152.609.881	109.885	+16.847	-37.022.131	22.131	+195.311		372.840 957		21461.749 235
III	-152.288.246	68.246	-100.125	-37.206.057	204.057	+168.539	20431.207.125			11502.112.594
IV	-152.309.760	9.760	-16.847	-37.190.670	190.670	-195.311	3212.217 490		1906.235 360	
							23643.428.615	1248.534.207	10368.971.421	32963.861.829
							27394.890.408			22394.890.408
										1/2 = 11197.445 204
						2879I		II	III	IV
						11.197.44		(4.50' + 4.50' + 4.50' + 4.50')		= 11.179.44

面地計算

B-0.5022



面積計算書

工区

ウ

ブロック

5622

計算者



精算者



備考

豊成 382内*2
" 366(0)

点	①	②	③	④	⑤	⑥	③ × ⑤		② × ⑥	
	X	X-(定数)	X _{n-1} -X _{n+1}	Y	Y-(定数)	Y _{n-1} -Y _{n+1}	+	-	+	-
		-152,300			-37,000					
1	-152,354.223	54.323	+ 29.910	-37.007.415	9.415	+ 3.767		281.602650		204.634741
2	-152,380.609	80.639	+ 20.958	-37.015.432	15.438	+ 29.436		323.549604		2,373.689604
22	-152,375.281	75.281	- 34.599	-37.032.851	38.851	+ 16.722	1,344.205749			1,258.848882
20	-152,346.040	46.040	- 24.552	-37.032.160	32.160	- 27.180	789.592320		1,251.367200	
21	-152,352.729	50.729	+ 8.283	-37.011.671	11.671	- 22.745		96.670893	1,153.831105	
							2,133.798069	701.823147	2,405.198305	3,837.173227
							1,431.974922			1,431.974922
								1/2 = 715.987461		
		-152,300			-37,000					
19	-152,325.599	35.599	- 18.801	-37.077.777	77.777	- 52.311	1,462.285377		1,862.219289	
20	-152,346.040	46.040	+ 39.682	-37.032.160	32.160	- 38.926		1,276.173120	1,792.153040	
22	-152,375.281	75.281	+ 18.801	-37.032.851	38.851	+ 52.311		730.437651		3,238.024091
25	-152,364.841	64.841	- 39.682	-37.084.471	84.471	+ 38.926	3,351.978222			2,524.000766
							4,814.263599	2,006.610771	3,654.372329	6,462.025167
							2,807.652828			2,807.652828
								1/2 = 1,403.826414		

面積計算書

I
区

ウ

ブロック

22

計算者

精算者

備考

豊 366-2

点	①	②	③	④	⑤	⑥	③ × ⑤		② × ⑥	
	X	X - (定数)	$X_{n-1} - X_{n+1}$	Y	Y - (定数)	$Y_{n-1} - Y_{n+1}$	+	-	+	-
C	742 229.810	-152.530 9.810	- 23.013	267.270 267.270	-37.030 223.76	- 223.76				
20	246.040	16.040	+35.471	222.166	2-160	-	76,617,360			
22	275.281	45.281	+23.013	228.857	8.851	+	203,688,063			
D	269.053	19.053	-35.471	266.067	26.067	+				
							280,305,423	1955,762,45		
								1695,057,022		
										$\frac{1}{2} = 837,52$

面積計算書

工区

ウ

ブロック

22

計算者

精算者

備考

豊 366-3

点	①	②	③	④	⑤	⑥	③ × ⑤		② × ⑥	
	X	X - (定数)	$X_{n-1} - X_{n+1}$	Y	Y - (定数)	$Y_{n-1} - Y_{n+1}$	+	-	+	-
19	735 225.599	-135.330 5.599	-25.031	-37 277.777	-37.050 27.777	-				695.286087
C	239.810	9.810	+33.454	259.276	27.777	-	313.684704			
D	269.053	39.053	+25.031	266.067	16.067	+	402.173077			
25	264.841	34.841	-33.454	284.471	34.471	+				1153.192834
							715.857781			1848.478921
										1132.621140
							1/2 = 566.31			

面積計算書

工区

3

ブロック

5622

計算者



精算者



備考

4/21 或 380

点	①	②	③	④	⑤	⑥	③ × ⑤		② × ⑥	
	X	X-(定数)	X _{n-1} -X _{n+1}	Y	Y-(定数)	Y _{n-1} -Y _{n+1}	+	-	+	-
2	-152,380.639	-152,300 80.639	+32.087	-37,015.438	-37,000 15.438	-19.173			495.359106	2,546.091547
3	-152,406.960	106.960	+28.577	-37,021.462	21.462	+9.617			613.319574	1,028.634320
4	-152,409.216	109.216	-2.842	-37,025.055	25.055	+25.867			71.706310	2825.090276
5	-152,404.118	104.118	-34.343	-37,047.329	47.329	+15.580			2,625.419847	1,622.158440
23	-152,374.873	74.873	-23.479	-37,040.635	40.635	-31.891			954.069165	2,387.774843
									2,650.695322	1,108.678680
									3,933.866390	5,495.883032
									1,542.016642	1,542.016642
									$\frac{1}{2} = 771008321$	

面積計算書

工区

3

ブロック

5622

計算者



精算者

備考

豊成

3665

378

点	①	②	③	④	⑤	⑥	③ × ⑤		② × ⑥	
	X	X-(定数)	X _{n-1} -X _{n+1}	Y	Y-(定数)	Y _{n-1} -Y _{n+1}	+	-	+	-
25	-152,364.841	-152,300 64.841	+24.135	-37,024.471	-37,000 84.471	+29.018				
7	-152,374.084	94.084	+34.353	-37,071.166	91.166	-15.628				
6	-152,379.194	99.194	-24.135	-37,062.243	68.843	-29.018	1,661,525,805		2,278,411,492	
24	-152,367.949	69.949	-34.353	-37,062.148	62.148	+15.628	2,134,970,244			1,093,162,972
							3,796,496,049	5,170,533,183	4,348,756,244	2,974,719,110
									1,374,037,134	1,374,037,134
									$\frac{1}{2} = 687,018,567$	
24	-152,367.949	-152,300 69.949	+24.321	-37,062.148	-37,000 62.148	+28.208				
6	-152,379.194	99.194	+34.169	-37,062.243	68.843	-14.819				
5	-152,407.118	104.118	-24.321	-37,047.329	47.329	-28.208	1,151,088,609		2,936,960,546	
23	-152,374.873	74.873	-34.169	-37,042.625	40.635	+14.819	1,388,457,315			1,109,542,987
							2,539,545,924	3,863,777,975	4,406,916,430	3,082,664,379
									1,324,252,051	1,324,252,051
									$\frac{1}{2} = 662,126,025$	

面積計算書

工区

3

ブロック

5622

計算者



精算者



備考

362-1 (1)

367 (1)

点	①	②	③	④	⑤	⑥	③ × ⑤		② × ⑥	
	X	X-(定数)	X _{n-1} -X _{n+1}	Y	Y-(定数)	Y _{n-1} -Y _{n+1}	+	-	+	-
28	-152,348.736	-152,300 48.936	-18.890	-37,153.772	-37,100 53.772	-51.929	1,019.531080			2,541.197544
26	-152,359.227	59.287	+39.593	-37,108.740	8.740	-38.534		346.042820		2,284.565258
8	-152,322.529	88.529	+18.890	-37,115.420	15.438	+51.929		291.623820		4,597.22444
9	-152,378.177	78.177	-39.593	-37,160.689	60.669	+38.534	2,402.067717			3,012.472518
							3,421.598797	637.666640	4,825.762802	7,609.674957
							2,783.982157			2,783.932157
									$\frac{1}{2} = 1,391.9660785$	
26	-152,359.227	-152,300 59.287	+23.688	-37,108.740	-37,000 108.740	+30.967		2,575.833120		1,835.940527
8	-152,322.529	88.529	+34.797	-37,115.438	115.438	-17.574		4,016.896086		1,555.808646
7	-152,394.084	94.084	-23.688	-37,091.166	91.166	-30.967	2,159.540208			2,913.499228
25	-152,364.841	64.841	-34.797	-37,084.471	84.471	+17.574	2,939.339387			7,139.515734
							5,098.877595	6,592.729206	4,469.307874	2,975.456763
								1,423.851611		1,423.851611
									$\frac{1}{2} = 746.9258055$	

分筆後の座標なし

面積計算書

工区

3

ブロック

6622

計算者



精算者



備考

寺 859-2
" 859-10)

点	①	②	③	④	⑤	⑥	③ × ⑤		② × ⑥	
	X	X-(定数)	X _{n-1} -X _{n+1}	Y	Y-(定数)	Y _{n-1} -Y _{n+1}	+	-	+	-
		-152,300			-37,100					
13	-152,337.006	39.006	-20.112	-37,177.264	97.364	-33.135	1,958.184768		1,292.463810	
30	-152,345.210	45.210	+35.444	-37,170.250	70.253	-20.411		2,490.047332	922.781310	
10	-152,374.450	74.450	+23.906	-37,176.953	76.953	+30.879		1,824.249818		2,298.941550
11	-152,362.916	68.916	-9.128	-37,201.122	101.132	+26.435	923.132896			1,821.794460
12	-152,365.322	65.322	-29.910	-37,203.328	103.388	-3.768	3,092.335080		746.133296	
							5,973.652744	4,314.295150	2,461.378416	4,120.936010
							1,659.357594			1,659.357594
									$\frac{1}{2} = 829.678797$	
30	-152,345.210	-152,300	+25.514	-37,170.250	-37,100	+22.98		1,792.435042		1,938.971010
10	-152,374.450	45.210	+32.967	-37,176.953	70.253	-9.584		2,536.909551	713.528800	
9	-152,378.177	74.450	-25.514	-37,160.669	76.953	-22.98	1,547.908866		1,796.585637	
28	-152,348.926	78.177	-32.967	-37,153.972	60.669	+9.584	1,779.294924			469.002674
							3,327.203790	4,329.344593	2,510.114437	1,507.973634
									1,002.140803	1,002.140803
									$\frac{1}{2} = 501.0704015$	

面積計算書

工区

3

ブロック

4622

計算者



精算者



備考

豊成 485-9
豊成 859-163

点	①	②	③	④	⑤	⑥	③ × ⑤		② × ⑥	
	X	X-(定数)	X _{n-1} -X _{n+1}	Y	Y-(定数)	Y _{n-1} -Y _{n+1}	+	-	+	-
17	-152,313.692	-157.300 19.692	+ 31.073	-37.147.274	-37.100 47.274	- 1.294		1,468.945002		25.48/448
28	-152,348.906	48.936	+ 27.415	-37,152.972	53.972	+ 14.692		1,479.642380		718.969712
29	-152,347.107	47.107	- 31.073	-37,161.966	61.966	+ 1.294	1,925.469518			60.956458
16	-152,317.863	17.863	- 27.415	-37,158.266	55.266	- 14.692	1,515.117390		262.443196	
							3,440.586908	2,948.587382	287.924644	779.924170
							491.999526			491.999526
								$\frac{1}{2} = 245.999763$		
16	-152,317.863	-157.300 17.863	+ 36.698	-37,155.266	-37.100 55.266	- 25.780		2,027.046348		460.508140
29	-152,347.107	47.107	+ 21.143	-37,161.966	61.966	+ 42.098		7,310.147138		1,983,110486
10	-152,329.006	39.006	- 34.422	-37,197.264	97.364	+ 29.373	3,351,463,608			1,145.723238
14	-152,312.685	12.685	- 28.577	-37,191.229	91.339	- 9.618	2,610,194,603		122.004330	
15	-152,310.429	10.429	+ 5.178	-37,187.744	87.746	-36.073		454,348,788		376.205317
							5,961,658,211	3,791,542,274	958,719,787	3,128,833,774
							2,170,115,937			2,170,115,937
								$\frac{1}{2} = 1,085,057,968.5$		

面積計算書

工区

3

ブロック

5422

計算者



精算者



備考

青 367 40
青 884-1

点	①	②	③	④	⑤	⑥	③ × ⑤		② × ⑥	
	X	X-(定数)	X _{n-1} -X _{n+1}	Y	Y-(定数)	Y _{n-1} -Y _{n+1}	+	-	+	-
		-152,300			-37,000					
19	-152,335.577	35.599	+ 42.650	-37,077.777	77.777	- 51.886			3,317.189050	1847.089714
25	-152,364.841	64.841	+ 15.836	-37,084.471	84.471	+ 65.275			1,337.682756	4,232.496275
27	-152,351.435	51.435	- 42.650	-37,143.052	143.052	+ 51.886	6101.167800			2,668.756410
18	-152,322.191	22.191	- 15.836	-37,136.357	136.357	- 65.275	2,159,349,452			1,448.517525
							8,260.577252	4,654,871,806	3,295.607239	6,901.252685
							3,605.645446			3,605.645446
									$\frac{1}{2} = 1,802,822,723$	
		-152,300			-37,100					
18	-152,322.191	22.191	+ 31.743	-37,136.357	36.357	- 4.222			7,154,080,251	93,690,402
27	-152,351.435	51.435	+ 26.745	-37,143.052	43.052	+ 17.615			7,151,425,740	906,027,525
28	-152,348.936	48.936	- 31.743	-37,153.972	53.972	+ 4.222	7,773,233,196			206,607,992
17	-152,319.692	19.692	- 26.745	-37,147.274	47.274	- 27.615	7,264,343,130			346,874,580
							2,977,576,326	2,305,505,991	4,405,649,82	7,117.635317
							672.070335			672.070335
									$\frac{1}{2} = 336.0351675$	

面積計算書

工区

ウ

ブロック

5622

計算者



精算者



備考

Page 10

点	①	②	③	④	⑤	⑥	③ × ⑤		② × ⑥	
	X	X-(定数)	X _{n-1} -X _{n+1}	Y	Y-(定数)	Y _{n-1} -Y _{n+1}	+	-	+	-
14	-152,312.685	-152,300 12.685	+ 0.669	-37,191.387	-37,100 91.339	- 2.924			61.105791	37.090940
15	-152,310.429	10.429	- 2.925	-37,187.746	87.746	- 0.669	256.657050		6977001	
R	-152,309.760	9.760	+ 2.256	-37,190.670	90.670	+ 3.593			204.551520	35.067680
							256.657050		265.657311	44,067941
									9,000261	9,000261
									$\frac{1}{2} = 4,5001305$	
7	-152,351.399	-152,350 1.399	+ 3.594	-37,008.746	-37,000 8.746	- 2.256			31.433124	3.156144
1	-152,354.323	4.323	- 0.670	-37,009.415	9.415	+ 2.925	6,308050			17.644775
21	-152,350.729	0.729	- 2.924	-37,011.671	11.671	- 0.669	34,126004		0.487701	
							40.434054		31.433124	3.643845
									7,000930	9,000930
									$\frac{1}{2} = 4,500465$	

面積計算書

工区

ウ

ブロック

5622

計算者



精算者



備考

下層地

点	①	②	③	④	⑤	⑥	③ × ⑤		② × ⑥	
	X	X-(定数)	X _{n-1} -X _{n+1}	Y	Y-(定数)	Y _{n-1} -Y _{n+1}	+	-	+	-
3	-152,426.960	-152,400 6.960	-0.669	-37,041.462	-37,020 1.462	+2.924	0.918078			20.351040
4	-152,409.216	9.216	+2.925	-37,025.055	5.055	+0.669		14.785875		6.165804
II	-152,409.885	9.885	-2.256	-37,022.131	2.131	-3.593	4.801536			35.516805
							5.785614	14.785875	35.516805	26.516544
								9.000261	9.000261	
										$\frac{1}{2} = 4.5001305$
12	-152,365.322	-152,360 5.322	+0.670	-37,203.388	-37,200 3.388	-2.925		7.269960		15.566850
11	-152,362.916	8.916	+2.924	-37,201.132	1.132	+0.669		3.309968		5.964804
III	-152,362.246	8.246	-3.594	-37,204.057	4.057	+2.256	14.580858			18.602976
							14.580858	5.579928	15.566850	24.567780
							9.000930			9.000930
										$\frac{1}{2} = 4.500465$

計年
月
算日

計算者

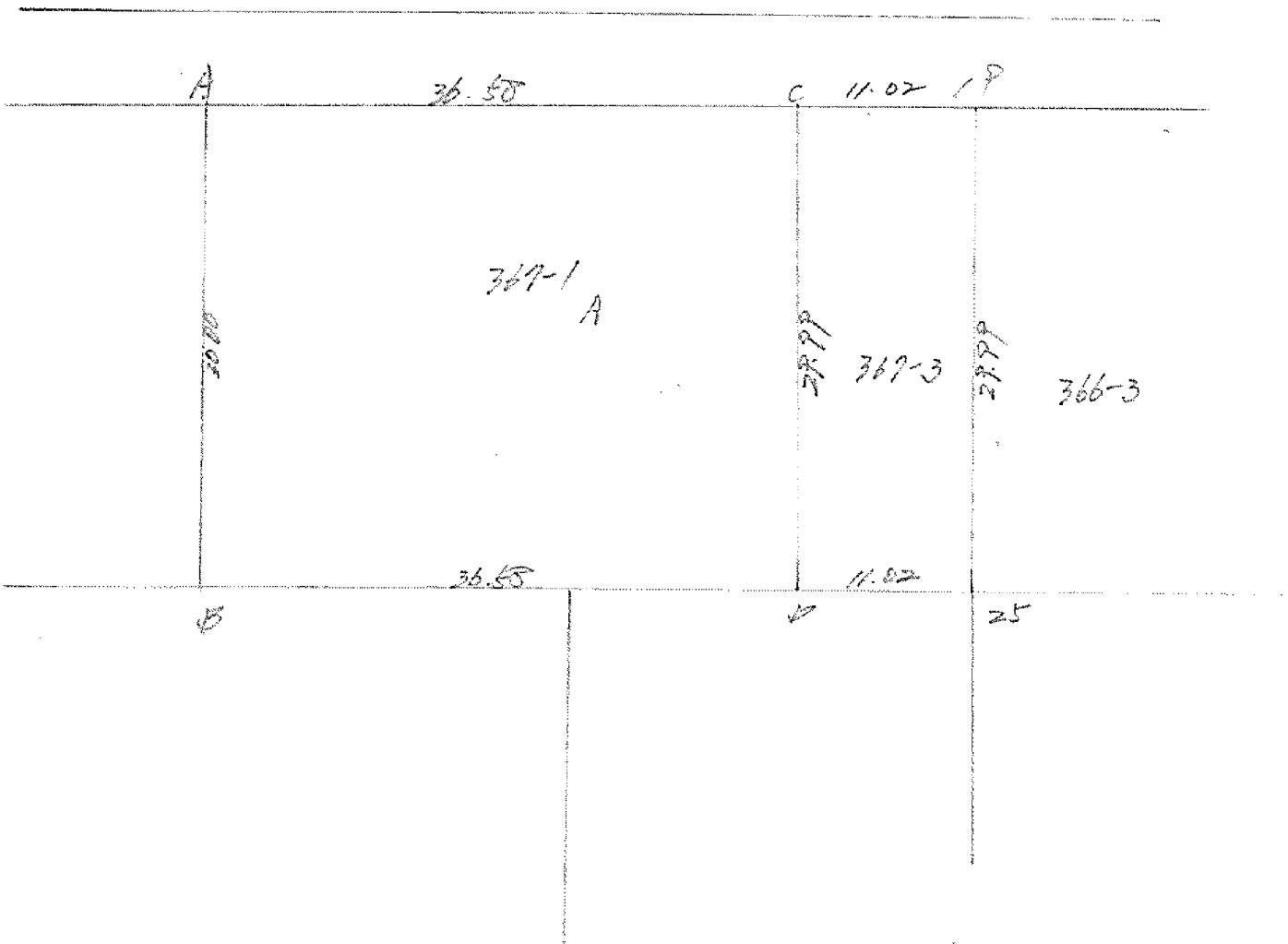


検査者



B.NO. 5622 各筆面積計算書

地番	算式	隅切	地積	摘要
	豊成 382の内第2		715.98	
	豊成 380		771.00	
	豊成 378		662.12	
	豊成 366 (A)		687.01	
	豊成 367 (B)		746.92	
	豊成 368の1(A)		1,391.96	
	青江 859の1(B)		501.07	
	青江 859の2		829.67	
	青江 859の1(A)		1,085.05	
	豊成 485の9		245.99	
	青江 884の1		336.03	
	豊成 367 (A)		1,802.82	
	豊成 366 (B)		1,403.82	
	計		11,179.44	
	全体		11,179.44	
		差	±0-	
	換地		11,179.44	



367-1

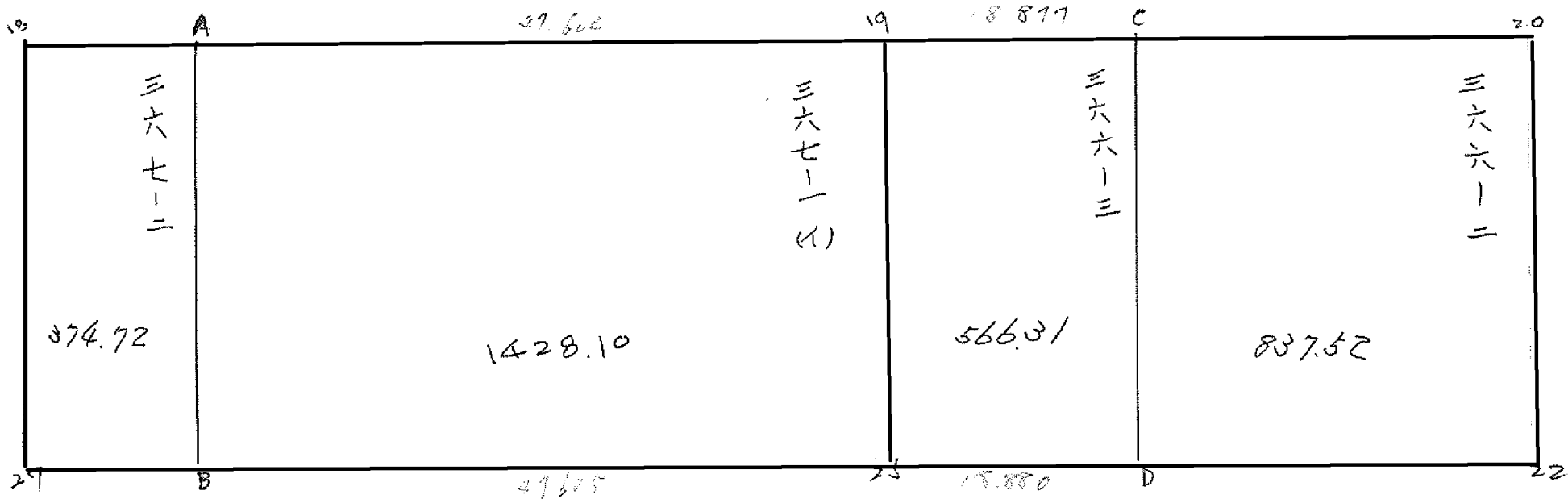
D	No	X _n (1)	X _{n-1} -X _{n+1} (2)	Y _n (3)	Y _{n-1} -Y _{n+1} (4)	(2) x (3) +	(1) x (4) -
		152333.140		37088.520			
36.583	A	152324.977	-21.081	37124.181	-42.356	782614.859661	6451876.725812
30.001	B	152354.221	-37.405	37130.876	28.967	1388880.41678	4413244.719707
36.584	D	152362.382	21.081	37095.214	42.356	782004.206334	6453461.051992
29.998	C	152333.140	37.405	37088.520	-28.967	1387296.0906	4412634.06638
36.583		152324.977		37124.181			
						2169300.296934	2171495.276441
						2194.979507	2194.979507
						$\times 1/2 = 1097.489754$	M^2

1097.50 M² = 决良步

367-3

D	No	X _n (1)	X _{n-1} -X _{n+1} (2)	Y _n (3)	Y _{n-1} -Y _{n+1} (4)	(2) x (3) +	(1) x (4) -
		152333.140		37088.520			
11.021	19	152335.599	-31.701	37077.777	40.49	1175402.608677	616806.840351
29.998	25	152364.841	-26.783	37084.471	-17.437	993233.386793	2656785.732517
11.021	D	152362.382	31.701	37095.214	-40.49	1175955.379014	616915.284718
29.998	C	152333.140	26.783	37088.520	17.437	993341.83116	2656232.96218
11.021		152335.599		37077.777			
						2169297.210174	2168635.993470
						661.214704	3273039.802531
							3273039.802531
							661.214704
						$\times 1/2 = 330.607352$	M^2

330.60 M²



面積計算書

工区

ウ

ブロック

27

計算者

精算者

備考

豊 367-2

点	①	②	③	④	⑤	⑥	③ × ⑤		② × ⑥	
	X	X - (定数)	X _{n-1} - X _{n+1}	Y	Y - (定数)	Y _{n-1} - Y _{n+1}	+	-	+	-
18	712 322.181	(-152920) 2.191	+ 26.458	36.257	(-77120) 16.357	+ 18.871	432.073506			
A	324.977	4.977	- 32.030	124.181	4.181 4.181	+ 5.481		133.917430		
B	354.221	34.221	- 26.458	130.876	10.876	- 18.871		287.7517208		
27	351.435	31.435	+ 32.030	143.052	23.052	- 5.481	738.355560			
								421.674638		
								171.128066		
								749.254428		
								129.154428		
								1/2 = 374.72		
								219.57		

面積計算書

工区

3

ブロック

22

計算者

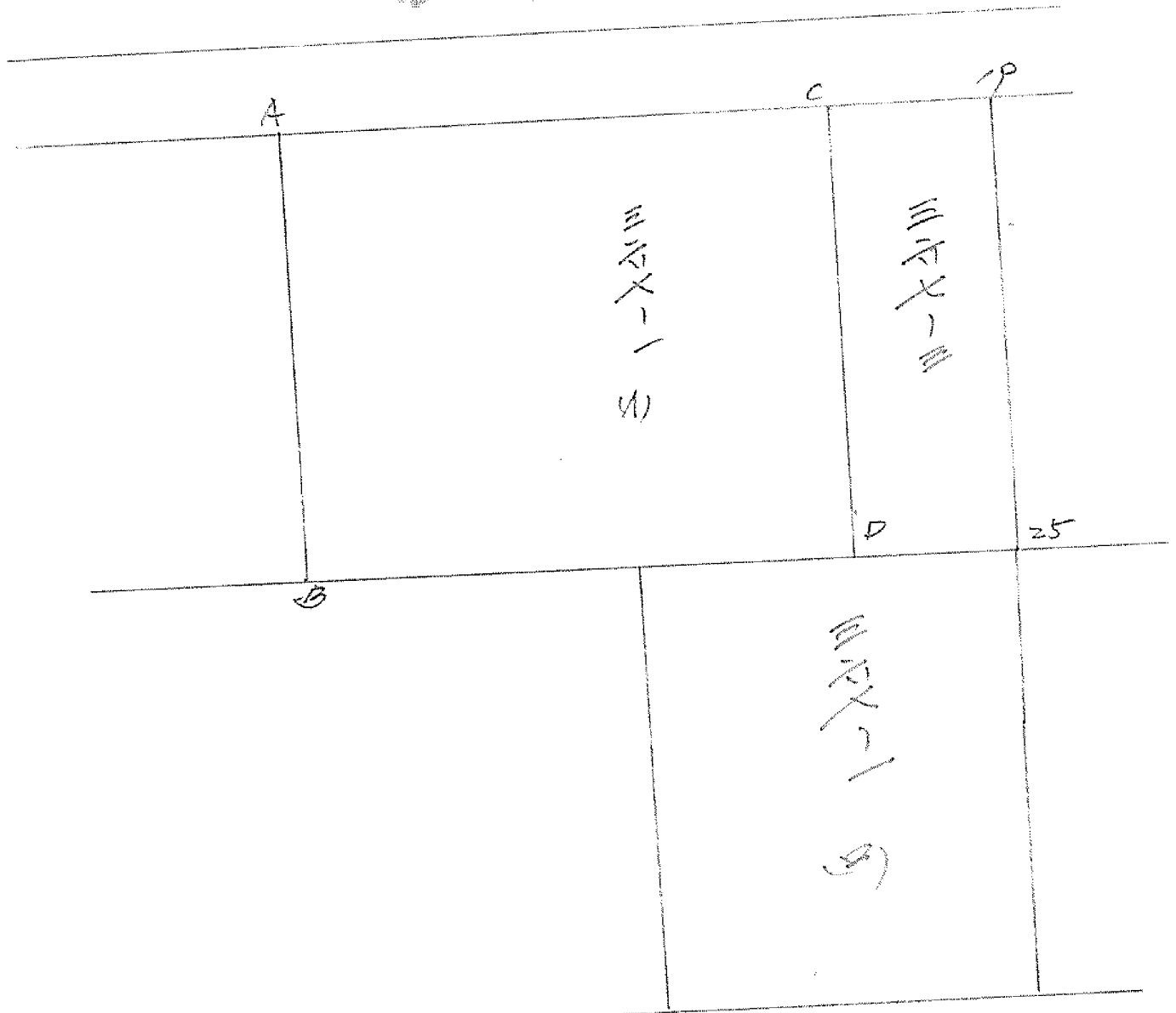
精算者

備考

豊 367-1(1)

点	①	②	③	④	⑤	⑥	③ × ⑤	② × ⑥
	X	X - (定数)	X _{n-1} - X _{n+1}	Y	Y - (定数)	Y _{n-1} - Y _{n+1}	+	-
A	752 224.977	-152.320 4.977	-18.622	-37 224.187	-37.070 54.181	-53.099		
19	235.599	15.599	+39.864	077.727	7.777	-39.710	30.022328	
25	264.841	24.841	+18.622	084.471	14.471	+53.099	269.478962	
B	354.221	34.221	-39.864	130.876	60.876	+39.710		
							579.501290	2635.719446
								2856.218156
							$\frac{1}{2} = 1428.10$	

畵式



367-1

D	No	X_n	$X_{n-1}-X_{n+1}$	Y_n	$Y_{n-1}-Y_{n+1}$	(2) x (3)		(1) x (4)	
		(1)	(2)	(3)	(4)	+	-	+	-
		152333.140		37088.520					
36.583	A	152324.977	-21.081	37122.181	-42.356		78204.859661		6451876.725812
30.001	B	152354.221	-37.405	37130.876	28.967		1388880.41678	4413244.719707	
36.584	D	152362.382	21.081	37095.214	42.356	78204.206334		6453461.051992	
29.998	C	152333.140	37.405	37088.520	-28.967	1387296.0906			4412634.06638
36.582		152324.977		37122.181					
						2169300.296934	2171495.276441	10866705.771699	10864510.792192
							2194.979507	2194.979507	
							$\times 1/2$	1097.489754	M^2

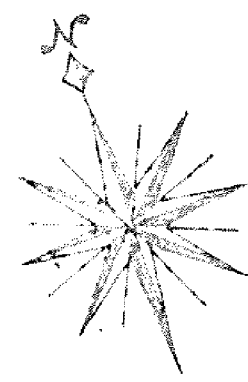
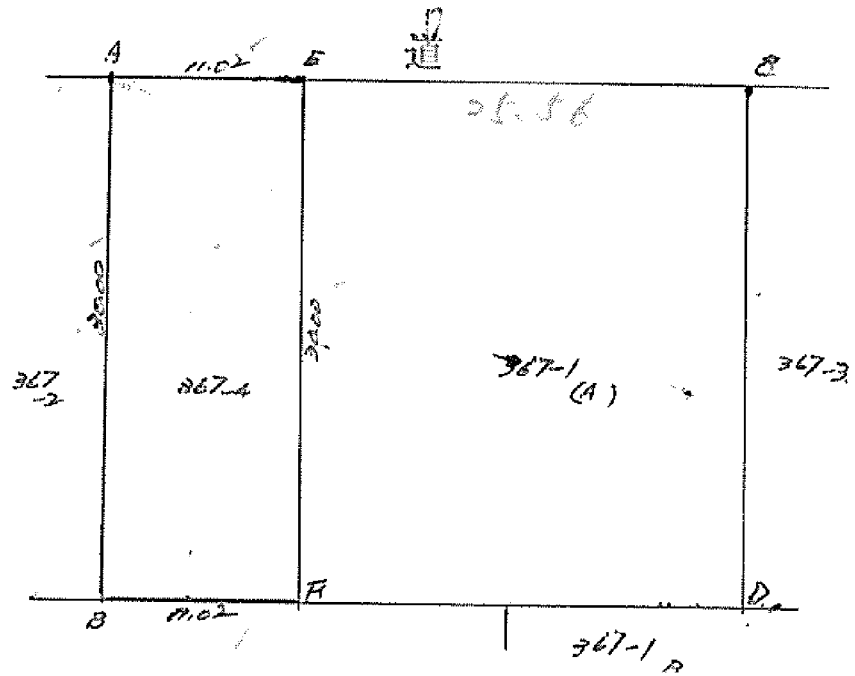
367-3

D	No	X_n	$X_{n-1}-X_{n+1}$	Y_n	$Y_{n-1}-Y_{n+1}$	(2) x (3)		(1) x (4)	
		(1)	(2)	(3)	(4)	+	-	+	-
		152333.140		37088.520					
11.021	19	152335.599	-31.701	37077.777	4.049		1175402.608677	616806.840351	
29.998	25	152364.841	-26.783	37084.471	-17.437		993233.386793		2656785.732517
11.021	D	152362.382	31.701	37095.214	-4.049	1175955.379014			616915.284718
29.998	C	152333.140	26.783	37088.520	17.437	993341.83116		2656232.96218	
11.021		152335.599		37077.777					
						2169397.210174	2169635.995470	3273099.802531	3273099.017235
						661.214704			661.214704
							$\times 1/2$	330.607352	M^2

豐成367-4

測點	X 座標	Y 座標	緯距 (dx)	經距 (dy)	合緯距 (x) (縱座標)	合經距 (y) (橫座標)	$y_{n+1} - y_{n-1}$	$x_n (y_{n+1} - y_{n-1})$
A	152.324.977	37.124.181	0	0	0	0	17.438	
E	152.327.436	37.128.438	2.459	-10.743	2.459	-10.743	-4.048	9.954032
F	152.356.679	37.120.193	29.244	6.695	31.702	-4.048	-17.438	-552.819476
B	152.354.221	37.120.876	-2.459	10.743	29.244	+6.695	-4.048	-118.379712
A			-29.244	-6.695	0			

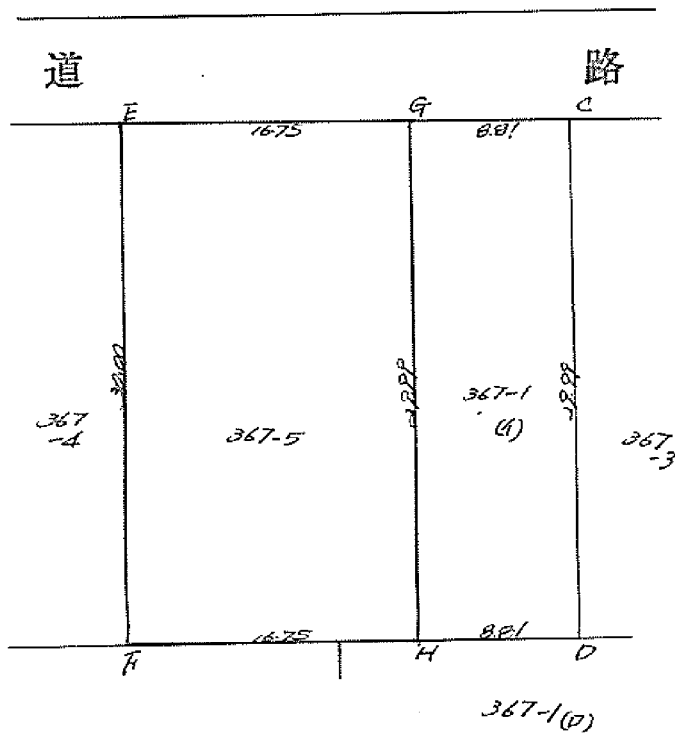
$$\frac{\Sigma 661.245156}{\times 1/2} = \underline{\underline{330,622578}}$$



367-5

550.7.22

測点	X 座標	Y 座標	緯度(dx)	経度(dy)	合緯距(x) (縦座標)	合経距(y) (横座標)	$y_{n+1} - y_{n-1}$	$K_n(y_{n+1} - y_{n-1})$
E	152.327.436	37.113.438	0	0	0	0	-23.024	0
G	152.331.174	37.077.109	3.738	-16.329	3.738	-16.329	-9.635	-36.015630
H	152.360.417	37.103.803	29.243	6.694	32.981	-9.635	23.024	759.354544
F	152.356.679	37.120.133	-3.738	16.330	29.243	6.695	9.635	281.756305
E			-29.243	-6.695				



$\Sigma 1005.095219$
 $\times \frac{1}{2} \underline{\underline{502.5476095}}$

367-1(4)

測点	X 座標	Y 座標	緯度(dx)	経度(dy)	合緯距(x) (縦座標)	合経距(y) (横座標)	$y_{n+1} - y_{n-1}$	$K_n(y_{n+1} - y_{n-1})$
G	152.331.174	37.077.109	0	0	0	0	-15.283	0
C	152.333.140	37.088.520	1.966	-8.589	1.966	-8.589	-1.895	-3.725570
D	152.362.382	37.075.214	29.242	6.694	31.208	-1.895	15.283	476.951864
H	152.360.417	37.103.803	-1.965	8.589	29.243	+6.694	1.895	55.415485
G			29.243	-6.694				

$\Sigma 528.641779$
 $\frac{1}{2} \underline{\underline{264.3208895}}$