

BLOCK NO. 65

街区計算

街区略図

工区

3

ブロック

65

記入者



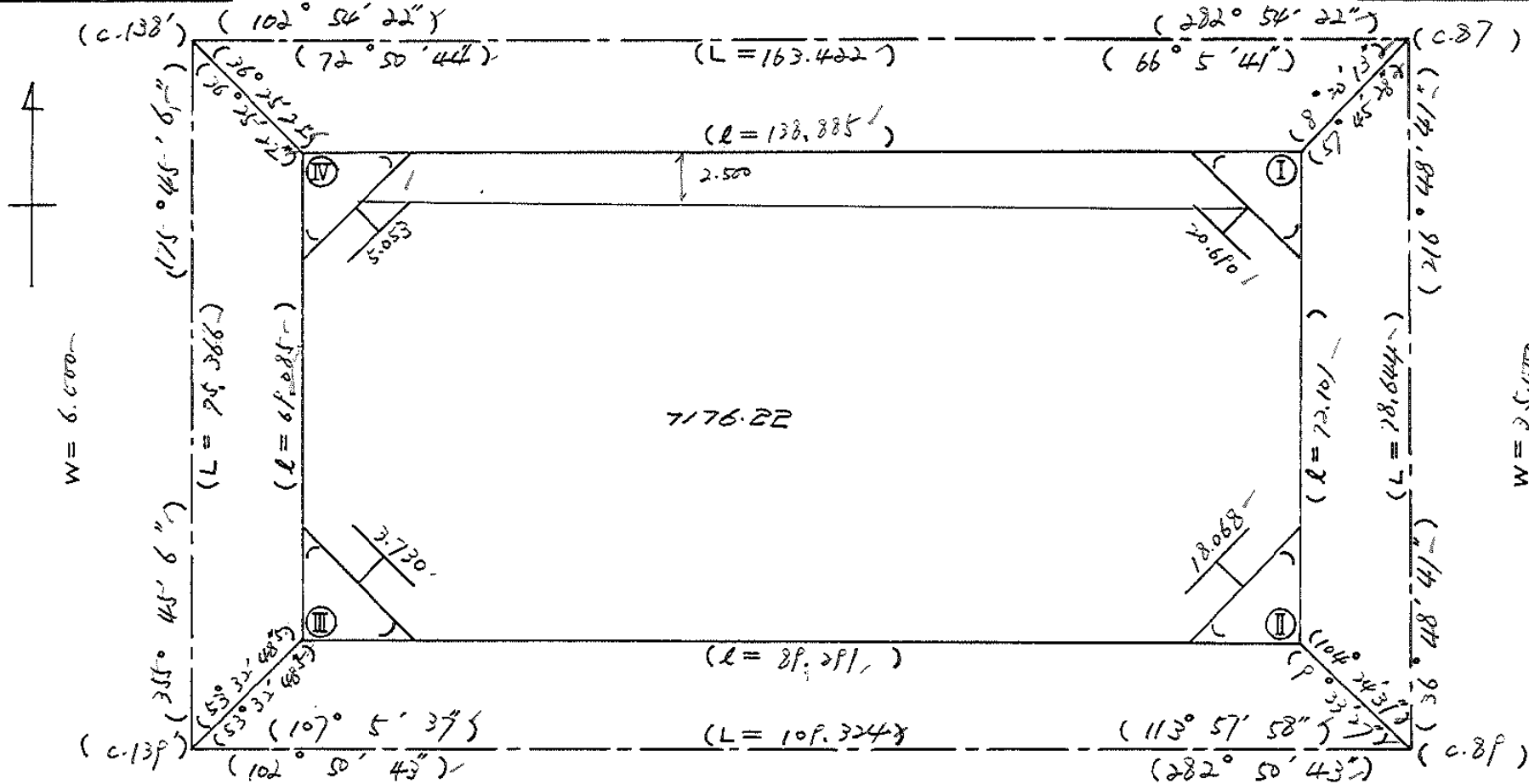
点検者



$$\begin{aligned} X &= -152,320.561 \\ Y &= -38,276.460 \end{aligned}$$

$$W = 6.000$$

$$\begin{aligned} X &= -152,357.062 \\ Y &= -38,117.167 \end{aligned}$$



$$\begin{aligned} X &= -152,395.720 \\ Y &= -38,270.877 \end{aligned}$$

$$W = 6.000$$

$$\begin{aligned} X &= -152,420.025 \\ Y &= -38,164.289 \end{aligned}$$

面地計算

画地略図

工区

3

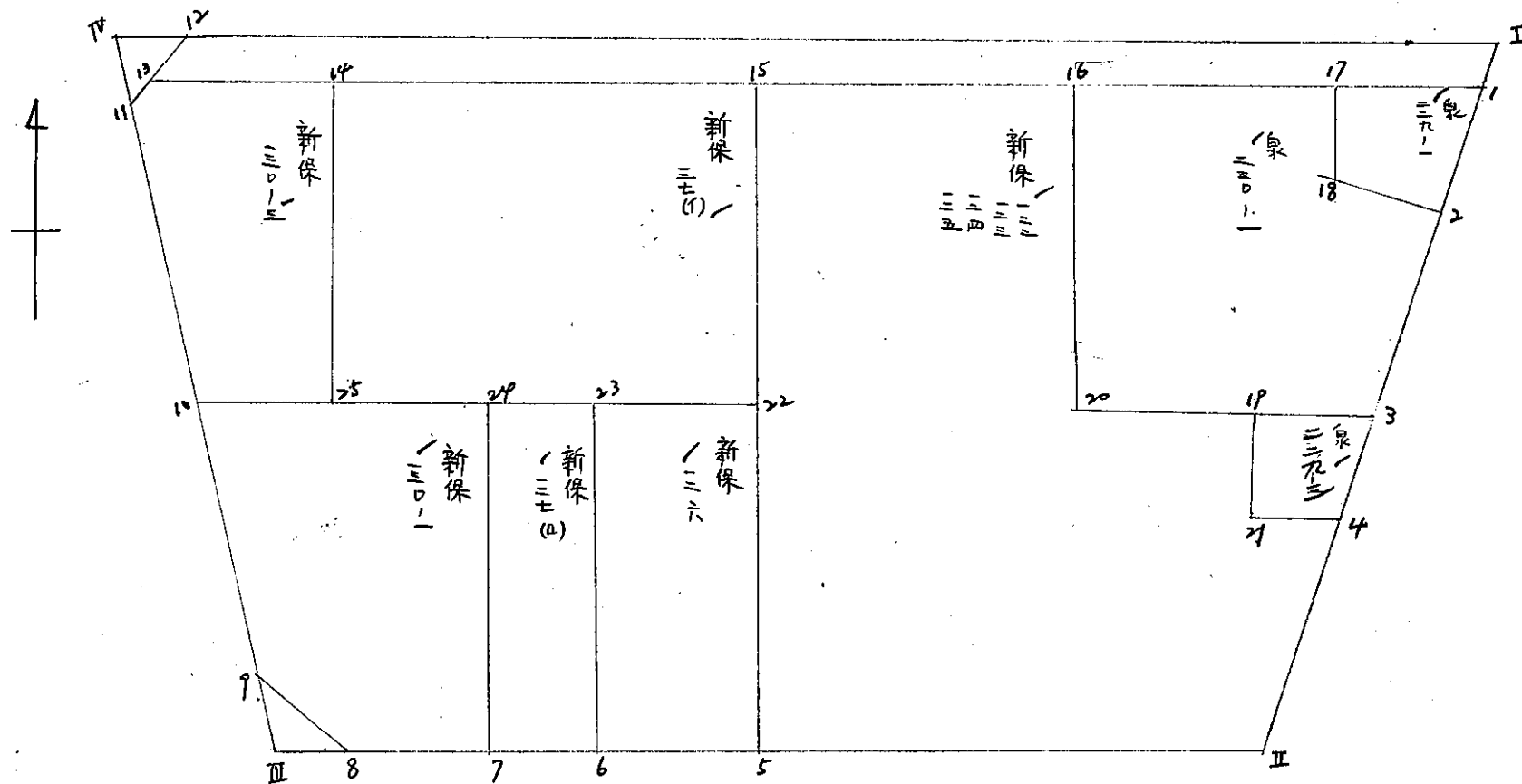
ブロック

65

記入者



点検者



面積計算書

工区

3

ブロック

65

計算者

三和

精算者

三和

備考

奥田

229-1

230-1

点	①	②	③	④	⑤	⑥	③	×	⑤	②	×	⑥
	X	X-(定数)	X _{n-1} -X _{n+1}	Y	Y-(定数)	Y _{n-1} -Y _{n+1}	+	-	+	-		
1	-152, 357.603	-152.350 7.603	+9.215	-38, 139.429	-38.130 9.429	-3.377			86.888235	25.675331		
2	364.809	14.809	+3.700	144.822	14.822	+10.078			54.841400			149.245102
18	361.303	11.303	-9.215	149.507	19.507	+3.377	179.757005					38.170231
17	355.594	5.594	-3.700	148.199	18.199	-10.078	67.336360			56.376332		
							247.093305	141.729635	82.051663	187.415333		
							105.363670			105.363670		
							1/2 = 52.681835					
17	-152, 355.594	-152.350 5.594	+10.696	-38, 148.199	-38.130 8.199	-20.455			87.696504	114.425270		
18	361.303	11.303	+9.215	149.507	9.507	-3.377			87.607005	38.170231		
2	364.809	14.809	+25.913	144.822	4.822	+12.085			124.952486			178.966765
3	387.216	37.216	+18.746	161.592	21.592	+32.671			404.703632			1215.883936
20	383.555	33.555	-36.609	177.493	37.493	+8.378	132.581237					282.855350
16	350.607	0.607	-27.961	169.962	29.962	-29.294	837.767482			77.781458		
							53.126	2210.348719	705019627	170.376959	1675.706051	
								1505.329092			1505.329092	
							1/2 = 752.664546					

面積計算書

工区 3 ブロック 65 計算者 精算者 泉田 22P-3 新保 122, 123, 124, 125

点	①	②	③	④	⑤	⑥	③ × ⑤		② × ⑥	
	X	X-(定数)	X _{n-1} -X _{n+1}	Y	Y-(定数)	Y _{n-1} -Y _{n+1}	+	-	+	-
3	-152, 387.216	-152.380 7.216	+11.334	-38, 161.592	-38.160 1.592	-4.256			18.043728	30.711296
4	396.048	16.048	+7.301	168.202	8.202	+13.102			59.882802	210.260896
21	394.517	14.517	-11.334	174.694	14.694	+4.256	166.541796			61.784352
1P	384.714	4.714	-7.301	172.458	12.458	-13.102	90.955858			61.762828
							257.497654	77.926530	92.474124	272.045248
							179.571124			179.571124
							1/2=89.785562			
4	-152, 396.048	-152.340 56.048	+18.622	-38, 168.202	-38.160 8.202	+6.299			152.737644	353.046352
II	413.139	73.139	+7.792	180.993	20.993	+53.571			163.577456	3918.129369
5	403.840	63.840	-71.161	221.773	61.773	+26.625	4395.828453			1699.740000
15	341.978	1.978	-53.233	207.618	47.618	-51.811	2534.848994			107.482158
16	350.607	10.607	+41.577	169.962	9.962	-30.125			414.190074	319.535875
20	383.555	43.555	+34.107	177.493	17.493	+2.496			596.633751	108.713280
1P	384.714	44.714	+10.962	172.458	12.458	-2.799			136.564596	125.154486
21	394.517	54.517	+11.334	174.694	14.694	-4.256			166.541796	232.024352
			124.394				88991		6930.677447	6079.629001
									5300.432130	5300.432130

1/2 = 2650.21665

面積計算書

工
区

3

ブ
ロ
ック

65

計
算
者



精
算
者



備
考

新保

126

127 (R)

点	①	②	③	④	⑤	⑥	③ ×	⑤	② ×	⑥	
	X	X-(定数)	X _{n-1} -X _{n+1}	Y	Y-(定数)	Y _{n-1} -Y _{n+1}	+	-	+	-	
5	-152, 403.840	-152.370 33.840	+27.666	-38, 221.773	-38.200 21.773	+20.203		602.371818		683.669520	
6	400.838	30.838	-33.689	234.959	34.959	+6.162	1177.733751			190.023756	
23	370.151	0.151	-27.666	227.935	27.935	-20.203	772.849710		3.050653		
22	373.172	3.172	+33.689	214.756	14.756	-6.162		497.114884	19.545864		
								1950.583461	1099.486702	22.596577	873.693276
								851.096759			851.096759
								1/2 = 425.5483795			
6	-152, 400.838	-152.360 40.838	+28.792	-38, 234.959	-38.220 14.959	+15.313		430.699528		625.352294	
7	398.943	38.943	-32.586	243.248	23.248	+1.261	757.559328			49.107123	
24	368.252	8.252	-28.792	236.220	16.220	-15.313	467.006240		126.362876		
23	370.151	10.151	+32.586	227.935	7.935	-1.261		258.569910	12.800411		
								1224.563568	689.269438	139.163287	674.459417
								535.296136			535.296136
								1/2 = 267.648065			

面積計算書

工区

3

ブロック

65

計算者



精算者



備考

新保

130-1

130-3

点	①	②	③	④	⑤	⑥	③	×	⑤	②	×	⑥
	X	X-(定数)	X _{n-1} -X _{n+1}	Y	Y-(定数)	Y _{n-1} -Y _{n+1}	+	-	+	-		
7	-152, 398.943	-152.360 38.943	+25.703	-38, 243.248	-38.230 13.248	+28.904			340.513344			1125.608672
8	393.955	33.955	-8.647	265.124	35.124	+25.023	303.717228					849.655965
9	390.296	30.296	-33.560	268.271	38.271	+5.368	1284.374760					162.628928
10	360.395	0.395	-22.044	270.492	40.492	-32.051	892.605648			12.660145		
24	368.252	8.252	+38.548	236.220	6.220	-27.244			239.768560	224.817488		
									2480.697636	580.281904	237.477633	2137.893365
									1900.415732			1900.415732
									1/2=950.207866			
10	-152, 360.395	-152.320 40.395	-35.505	-38, 270.492	-38.250 20.492	+13.331	727.568460					538.505745
11	327.384	7.384	-33.307	272.945	22.945	+2.108	764.229115					15.565472
13	327.088	7.088	+4.319	272.600	22.600	-20.484			97.409400	145.190592		
14	331.703	11.703	+35.801	252.461	2.461	-12.986			88.106261	151.975158		
25	362.889	42.889	+28.692	259.614	9.614	+18.031			275.844888			773.331559
									1491.797575	461.560549	297.165750	1327.402776
									1030.237026			1030.237026
									1/2=515.118513			

面積計算書

工区 3

ブロック

65

計算者



精算者



備考

又切 III, IV

点	①	②	③	④	⑤	⑥	③ ×	⑤	② ×	⑥
	X	X-(定数)	X _{n-1} -X _{n+1}	Y	Y-(定数)	Y _{n-1} -Y _{n+1}	+	-	+	-
Ⅴ	-152, 323.288	-152.390 3.288	-3.659	-38, 268.049	-38.260 8.049	+3.147	29.451291			10.347336
9	320.226	0.296	+0.667	268.271	8.271	-2.925		5.516757	0.865800	
8	323.955	3.955	+2.992	265.124	5.124	-0.222		15.331008	0.87.8010	
							29.451291	20.847765	1.743810	10.347336
							8.603526			8.603526
							1/2 = 4.301763			
Ⅳ	-152, 324.393	-152.320 4.393	-2.321	-38, 273.167	-38.270 3.167	-2.702	7.350607		11.869886	
12	325.063	5.063	+2.991	270.243	0.243	-0.222		0.726813	1.123986	
11	327.384	7.384	-0.670	272.945	2.945	+2.924	1.973150			21.590816
							9.323757	0.726813	12.993872	21.590816
							8.596944			8.596944
							1/2 = 4.298472			

面積計算書

工
区

3

ブ
ロ
ック

65

計
算
者



精
算
者



備
考

水路

点	①	②	③	④	⑤	⑥	③ ×	⑤	② ×	⑥
	X	X-(定数)	X _{n-1} -X _{n+1}	Y	Y-(定数)	Y _{n-1} -Y _{n+1}	+	-	+	-
I	-152, 355,414	-152.320 35.414	+ 32.540	-38, 137.796	-38.130 7.791	-130.814		253.519140	4632.46996	
1	357,603	37.603	-28.326	139.429	9.429	+134.809	267.085854			5069222827
13	337,088	7.088	- 32.540	272,600	142.600	+130.814	4640.204000			927.209632
12	325,063	5.063	+ 28.326	270,243	140.243	-134.809		3972.52328	682.537967	
							4907.289254	4226.042358	5315.184963	5996422459
							681.247496			681.247496
							1/2 = 340.623748			

計年
月
算日

計
算
者



檢
查
者

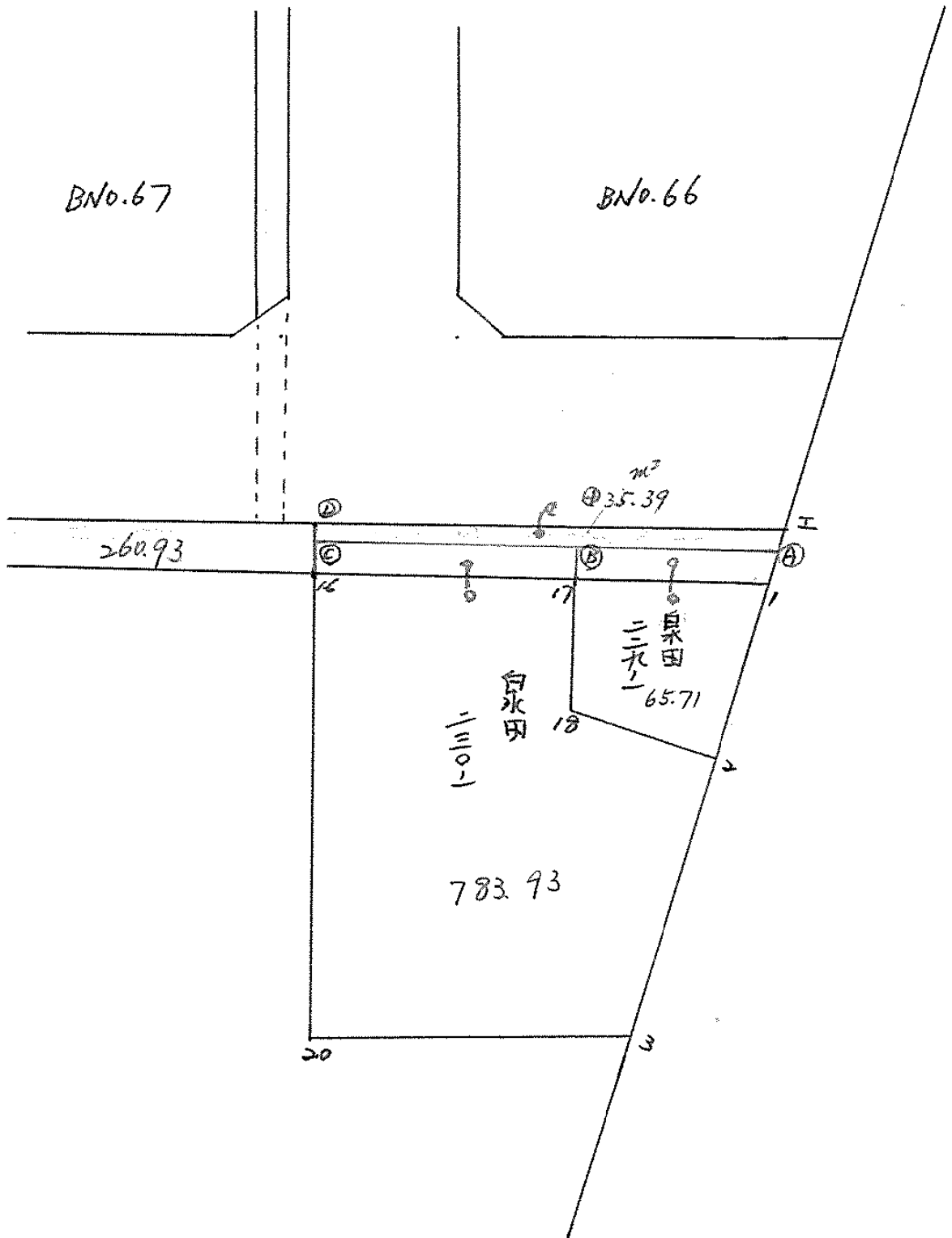


B.NO. 65

各筆面積計算書

地番	算式	隅切	地積	摘要
泉田				
229-1			52.68	
"				
230-1			752.66	
"				
279-3			89.78	
新保				
122				
123				
124				
125				
			2650.21	
新保				
126			425.54	
"				
127(A)			267.64	
"				
130-1			950.20	
"				
130-3			515.11	
"				
127(D)			1472.33	
スミ				
Ⅲ		4.30		
"				
Ⅳ		4.29		
水路	340.62			
計			7525.36	
全休			7525.43	
			- 0.07	

BNo. 65 街区変更計算



面積計算書

工区

3

ブロック

65

計算者

精算者

備考

泉田 229-1

4 230-1

点	①	②	③	④	⑤	⑥	③ × ⑤	② × ⑥
	X	X - (定数)	X _{n-1} - X _{n+1}	Y	Y - (定数)	Y _{n-1} - Y _{n+1}	+	-
A	-152. 356.377	-152,350 6.377	+ 10.580	-38, 138.512	-38,130. 8.512	- 3.064	90.056960	19.539128
2	364.809	14.809	+ 4.926	144.822	14.822	+ 10.995	73.013172	162.824755
18	361.303	11.303	- 10.580	149.507	19.507	+ 3.064	206.384060	34.632392
B	354.229	4.229	- 4.926	147.886	17.886	- 10.995	88.106436	46.497855
							294.490496	63.070132
							66.036983	197.457347
							131.420364	131.420364
							$\bar{Y}_2 = 65.710182$	
B	-152. 354.229	-152,300 54.229	+ 12.061	-38, 147.886	-38,100. 47.886	- 20.143	577.553046	1072.334747
18	361.303	61.303	+ 10.580	149.507	49.507	- 3.064	523.784060	187.832392
2	364.809	64.809	+ 25.913	144.822	44.822	+ 12.085	1161.472486	783.216765
3	387.216	87.216	+ 18.746	161.592	61.592	+ 32.671	1184.603632	2849.433736
20	383.555	83.555	- 37.974	177.493	77.493	+ 8.058	12942.719182	673.286190
C	349.242	49.242	- 29.326	169.650	69.650	- 29.607	2042.555900	1457.907894
							4985.275082	17.413224
							38.075033	4305.936891
							1567.861858	1567.861858
							$\bar{Y}_2 = 783.930929$	

面積計算書

工区

3

ブロック

65

計算者

精算者

備考

道水路 0=1)

点	①	②	③	④	⑤	⑥	③ × ⑤	② × ⑥
	X	X - (定数)	X _{n-1} - X _{n+1}	Y	Y - (定数)	Y _{n-1} - Y _{n+1}	+	-
I	-152, 355.414	-152.340, 15.414	+ 8.207	-38, 137.791	-38.130, 7.791	- 30.893	63.940737	476.184702
Ⓐ	356.377	16.377	- 6.172	138.512	8.512	+ 31.859	52.536064	521.754843
Ⓑ	349.242	9.242	- 8.207	169.650	39.650	+ 30.893	325.407550	285.513106
Ⓓ	348.170	8.170	+ 6.172	169.405	39.405	- 31.859	243.207660	260.288030
							377.943614	307.148377
							736.472732	807.267949
							70.795217	70.795217
							× 1/2 = 35.3976085	
Ⓔ	-152, 348.170	-152.320, 28.170	+ 25.544	-38, 169.405	-38.160, 9.405	- 100.281	240.241320	2824.915770
16	350.607	30.607	- 21.082	169.962	9.962	+ 103.195	210.018884	3158.489365
13	327.088	7.088	- 25.544	272.600	112.600	+ 100.281	2876.254600	710.791728
12	325.063	5.063	+ 21.082	270.243	110.243	- 103.195	2324.142926	522.676285
							3086.273284	2564.384246
							3347.892055	3869.281093
							521.889038	521.889038
							× 1/2 = 260.944519	
	πR (340.62 + 752.66 + 52.68) = 1145.96			1145.96 = 65.71 - 783.93 - 35.39 = 260.93				