

BLOCK NO. 42

街 区 計 算

街区略図

工区

ウ

ブロック

75 47

記入者

点検者

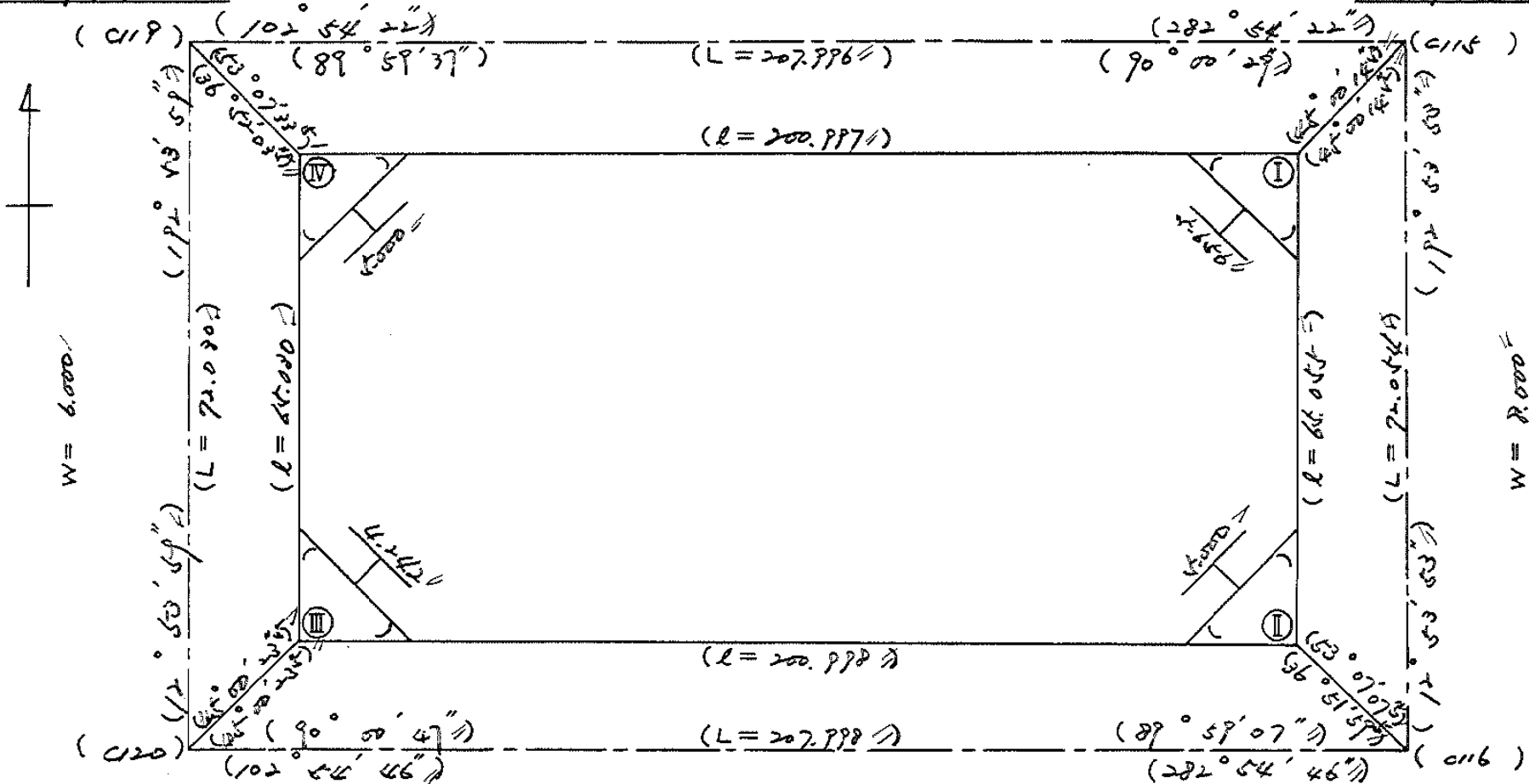
$$X = -152,433.346$$

$$Y = -37,709.206$$

$$W = 8,000$$

$$X = -152,479.802$$

$$Y = -37,506.564$$



$$X = -152,502.558$$

$$Y = -37,725.386$$

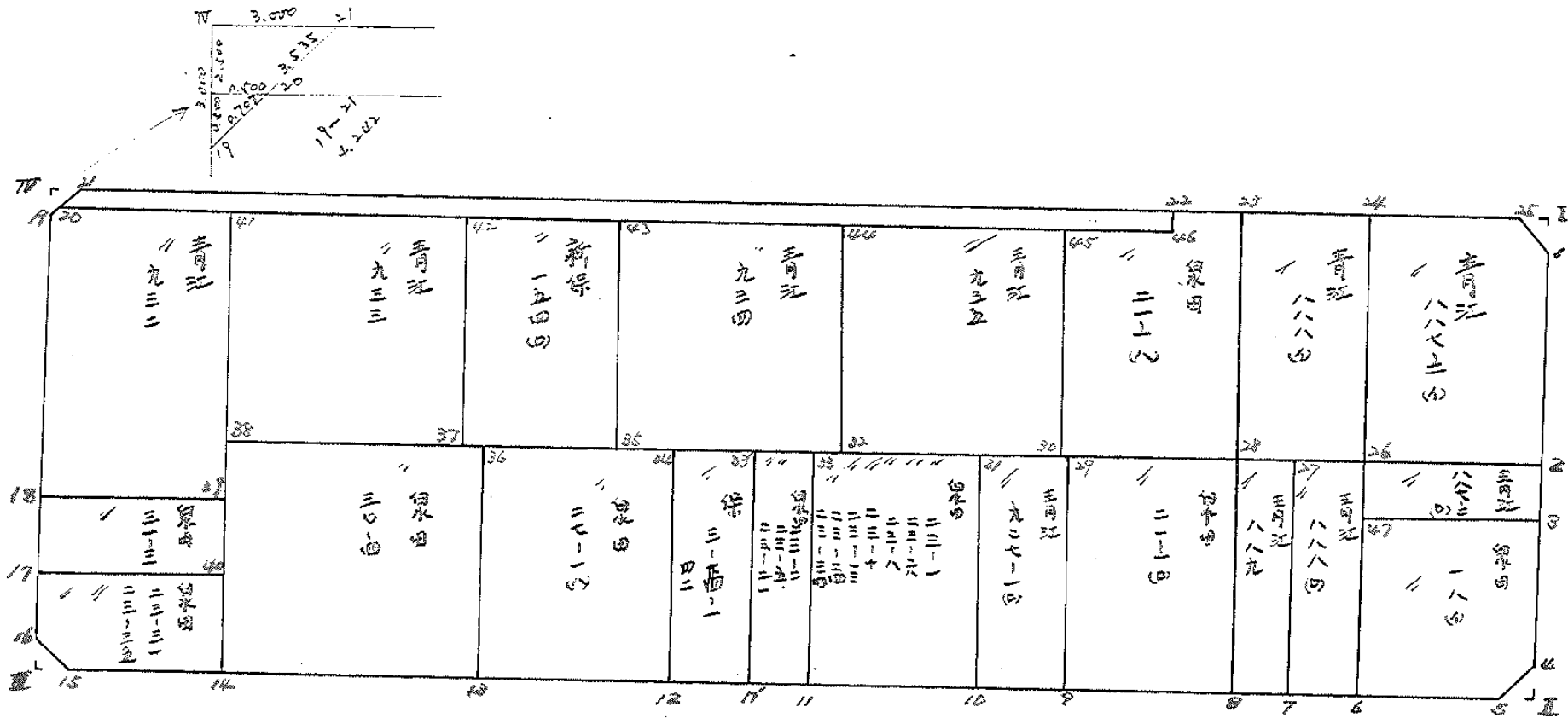
$$W = 6,000$$

$$X = -152,440.039$$

$$Y = -37,522.648$$

面地計算

B.No. 744/47



15-1

面積計算書						工区	ブロック	計算者	精算者	備考
						3				隅印 I 青江 887-2(4)
点	①	②	③	④	⑤	⑥	③ × ⑤	② × ⑥		
	X	X-(定数)	X _{n-1} -X _{n+1}	Y	Y-(定数)	Y _{n-1} -Y _{n+1}	+	-		
I	-152,482.807	-152,480 2.807	-3,594	-37,511.355	-37,510 1.355	+2,254	4,869,870	6,326,978		
25	-152,482.137	2.137	+2,924	-37,514.279	4,279	+0.670	12,511,796	1,431,790		
1	-152,485.731	5.731	+0.670	-37,512.025	2,025	-2,924	1,356,750	16,757,444		
							4,869,870	7,758,768		
							8,998,676	8,998,676		
							1/2 = 4,499,338			
1	-152,485.731	-152,470 15.731	+33,841	-37,512.025	-37,510 2,025	+4,672	68,528,025	73,495,232		
2	-152,515,978	45,978	+25,532	-37,518,951	8,951	+27,487	228,536,932	1262,797,286		
26	-152,511,263	41,263	-37,882	-37,539,512	29,512	+12,963	117,973,584	524,892,269		
24	-152,478,096	8,096	-29,126	-37,531,914	21,914	-25,233	638,267,164	204,286,368		
25	-152,482,137	12,137	+7,635	-37,514,279	4,279	-19,889	32,670,165	241,392,793		
							1756,240,748	329,735,122		
							445,679,161	1,872,184,987		
							1426,505,626	1426,505,626		
							1/2 = 713,252,813			

面積計算書		工区	ブロック	7042	計測者	精算者	備考	附物	Ⅱ	
点	①	②	③	④	⑤	⑥	③ × ⑤	② × ⑥		
	X	X-(定数)	X _{n-1} -X _{n+1}	Y	Y-(定数)	Y _{n-1} -Y _{n+1}	+	-	+	-
4	-152,543.296	-152.500 43.296	+0.671	-37,525.29	-37.500 25.207	-2.924		16.913897	126.597504	
Ⅱ	-152,546.221	46.221	+2.254	-37,526.277	25.877	+3.594		58.326759		166.118274
5	-152,545.550	45.550	-2.925	-37,528.801	28.801	-0.670	84.242925		30.518500	
							84.242925	75.246655	157.116004	166.118274
							9.002270			9.002270
									1/2 = 4.501135	
4	-152,543.296	-152.500 43.296	+21.862	-37,525.29	-37.500 25.207	+8.084		551.075434		350.004864
5	-152,545.550	45.550	-1.790	-37,528.801	28.801	+21.233	51.553790			967.163150
6	-152,541.526	41.506	-26.580	-37,546.448	46.440	+12.477	1234.375200			517.870362
47	-152,518.977	18.970	-17.810	-37,541.278	41.278	-25.723	735.491404		407.965310	
3	-152,523.688	23.688	+24.326	-37,520.717	20.717	-16.071		503.961742	380.689848	
								2021.420394	1055.037176	868.655150
										1035.030376
								966.383218		966.383218
									1/2 = 483.191609	

面積計算書						工区	ブロック	計算者	精算者	備考
										青江887-2(ロ) 青江888(ロ)
点	①	②	③	④	⑤	⑥	③ × ⑤	② × ⑥		
	X	X-(定数)	X _{n-1} -X _{n+1}	Y	Y-(定数)	Y _{n-1} -Y _{n+1}	+ -	+ -		
		-152500			-37500					
2	-152,515.978	15.978	+12.425	-37,518.757	18.951	-18.795	235.466175	300.306510		
3	-152,523.688	23.688	+2.992	-37,520.717	20.717	+22.327	61.995264	+28.881976		
47	-152,518.770	18.970	-12.425	-37,541.278	41.278	+18.795	512.879150	356.541150		
26	-152,511.263	11.263	-2.992	-37,539.512	39.512	-22.327	112.219904	251.469001		
							631.099054	297.451439		
							333.647615	333.647615		
								1/2 = 166.8238075		
		-152500			-37500					
6	-152,541.506	41.506	+27.942	-37,546.440	46.440	+16.968	1297.626480	704.273808		
7	-152,539.205	39.205	-32.545	-37,556.480	56.480	+3.111	1238.141600	121.966755		
27	-152,528.961	8.961	-27.942	-37,549.551	49.551	-16.968	1384.554042	152.050248		
26	-152,511.263	11.263	+32.545	-37,539.512	39.512	-3.111	1225.918040	25.039193		
							3222.695622	583.344520		
							127.08944	1826.240563		
							639.151122	639.151122		
								1/2 = 319.575561		

面積計算書

工区 ブロック 計算者 精算者 備考

点	①	②	③	④	⑤	⑥	③ × ⑤		② × ⑥	
	X	X-(定数)	X _{n-1} -X _{n+1}	Y	Y-(定数)	Y _{n-1} -Y _{n+1}	+	-	+	-
23	-152,476.254	-152,400 74.254	-29.323	-37,548.679	-37,500 48.679	-24.363	1427.414317		1829.050202	
24	-152,478.096	78.096	+37.009	-37,531.914	31.914	-9.167		1181.105226	715.906032	
26	-152,511.263	111.263	+29.323	-37,539.512	39.512	+24.363		1158.610376		2710.700469
28	-152,507.419	107.419	-27.009	-37,556.277	56.277	+9.167	2082.255493			984.709973
							3510.169810	2339.715602	2524.956234	3695.410442
							1170.454208			1170.454208
									1/2 = 585.227104	
7	-152,539.205	-152,500 39.205	+28.702	-37,556.480	-37,500 56.480	+13.655		1621.088960		535.364275
8	-152,537.663	37.663	-31.786	-37,563.206	63.206	-0.203	2009.065916			7.645589
28	-152,507.419	7.419	-28.702	-37,556.277	56.277	-13.655	1615.262454			101.306445
27	-152,508.961	8.961	+31.786	-37,549.551	49.551	+0.203		1575.028086		1.819083
							3624.328370	3196.117046	108.952034	537.163358
							428.211324			428.211324
									1/2 = 214.105662	

面積計算書						工区	ブロック	計算者	精算者	備考
						3		42		泉田 21-1(ウ) 青江 9-7-1(ロ)
点	①	②	③	④	⑤	③ × ⑤		② × ⑥		
	X	X-(定数)	X _{n-1} -X _{n+1}	Y	Y-(定数)	+	-	+	-	
28	-152,507.419	-152500 7.419	+35.517	-37,556.277	-37500 56.277	-16.072	1998.790209	119.238168		
8	-152,507.663	37.663	+24.970	-37,560.206	63.206	+29.932	1578.253820		1127.328916	
9	-152,502.009	32.389	-35.517	-37,526.209	86.209	+16.072	3061.885053		520.556008	
29	-152,502.146	2.146	-24.970	-37,577.278	79.278	-29.932	1979.571660	64.234072		
							5041.456713	3577.044029	183.472240	1647.884924
							1464.412684			1464.412684
								1/2 = 732.20		
29	-152,502.146	-152400 102.146	+32.947	-37,579.278	-37500 79.278	-4.862	2611.972266	496.633852		
9	-152,532.389	132.389	+27.539	-37,526.209	86.209	+18.725	2374.109651		2478.984025	
10	-152,529.685	129.685	-32.947	-37,578.003	98.003	+4.862	3228.904841		670.528470	
31	-152,499.442	99.442	-27.539	-37,591.071	91.071	-18.725	2508.004269	1862.051450		
							5776.909110	4986.081917	2358.685702	3109.572495
							750.827193			750.827193
								1/2 = 375.41		

面積計算書

工区

ウ

ブロック

~~42~~

計算者



計算者



備考

青江 935

界内 23-1. 23-6. 23-8. 23-10
23-12. 23-14. 23-16. 23-18

点	①	②	③	④	⑤	⑥	③ × ⑤		② × ⑥	
	X	X-(定数)	X _{n-1} -X _{n+1}	Y	Y-(定数)	Y _{n-1} -Y _{n+1}	+	-	+	-
45	-152,471.203	-152400 71.203	+37.523	-37.572.750	-37500 72.750	-22.632				
30	-152,502.011	102.011	+23.892	-37.579.863	79.863	+36.840				
32	-152,495.195	95.195	-37.523	-37.609.570	109.570	+22.632				
44	-152,464.488	64.488	-23.892	-37.602.495	102.495	-36.840				
							6560.956110	4637.885046	2989.467416	5912.538480
							1923.071064			1923.071064
									1/2 =	961.53532
31	-152,499.442	-152400 99.442	+34.979	-37.591.071	-37500 91.071	-13.720				
10	-152,529.685	129.685	+25.508	-37.598.003	98.003	+27.584				
11	-152,524.950	124.950	-34.979	-37.618.655	118.655	+13.720				
33	-152,494.706	94.706	-25.508	-37.611.723	111.723	-27.584				
							7000.263529	5685.433033	3976.714545	5291.545040
							1314.830496			1314.830496
									1/2 =	657.415248

面積計算書		工区	3	ブロック	7+42	計測者	精算者	備考	青丸 934	青丸 935
点	①	②	③	④	⑤	⑥	③ × ⑤	② × ⑥		
	X	X-(定数)	X _{n-1} -X _{n+1}	Y	Y-(定数)	Y _{n-1} -Y _{n+1}	+	-	+	-
43	-152,457.821	-152,400 57.821	-24.058	-37.631,589	-37,600 31.589	-36.094	759.968162		2086.991174	
44	-152,464.477	64.477	+37.374	-37.602,542	2.542	-21.999		95.004708	1418.429523	
32	-152,495.195	95.195	+24.058	-37.609,590	9.590	+36.094		220.716220		3436.968330
35	-152,488.535	88.535	-37.774	-37.638,636	38.636	+21.999	1443.981864			1947.681465
							2203.950026	325.720928	3505.420697	5383.649795
							1878.229098			1878.229098
							分筆後の座標なし		1/2 = 939.114549	
44	-152,464.477	-152,400 64.477	-23.906	-37.602,542	-37,500 102.542	-36.778	2451.369052		2371.335106	
45	-152,471.289	71.289	+37.534	-37.572,812	72.812	-22.679		2732.925608	1616.763271	
30	-152,502.011	102.011	+23.906	-37.579,863	79.863	+36.778		190.9204878		3751.760558
32	-152,495.195	95.195	-37.534	-37.609,590	109.590	+22.679	4113.351060		2158.927405	
							6564.720112	4642.1304863988	098337	1910.687963
							1922.589626			1922.589626
									1/2 = 961.294813	

面積計算書

工区

3

ブロック

~~5447~~

計算者



精算者



備考

図号 23-2. 23-5. 23-1
 5号 3-~~11~~-1

点	①	②	③	④	⑤	⑥	③ × ⑤		② × ⑥	
	X	X-(定数)	X _{n-1} -X _{n+1}	Y	Y-(定数)	Y _{n-1} -Y _{n+1}	+	-	+	-
		-152,490			-21,600					
33	-152,494.706	-4.706	+32.541	-37.611.723	-11.723	-2.089		-281,478.142	14,5368.344	
11	-152,524.750	-24.950	+27.946	-37.618.655	-18.655	+16.953		-521,332.630	592,507.350	
11'	-152,522.652	-32.652	-22.541	-37.628.676	-28.676	+3.089	933,145.716			100,862.028
33'	-152,492.409	-2.409	-27.946	-37.621.744	-21.744	-16.953	607,657.824		40,839.777	
							1540,802.540	902,810.773	55,376.611	692,369.378
							637,992.767			
							Σ = 318,996.3835			
		-152,480			-37,620					
33'	-152,492.409	12.409	+33.111	-37.621.744	1.744	-5.574		57,745.584	69,167.966	
11'	-152,522.652	42.652	+27.376	-37.628.676	8.676	+19.438		237,514.176	829,069.576	
12	-152,519.785	39.785	-33.111	-37.641.182	21.182	+5.574	701,357.202			221,761.590
34	-152,489.541	9.541	-27.376	-37.634.250	14.250	-19.438	390,108.000		185,457.958	
							1091,465.202	295,259.760	254,625.724	1050.831.166
							796,205.442			796,205.442
									Σ = 398,102.721	

面積計算書

工区

ウ

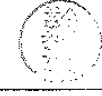
ブロック

~~77-47~~

計算者



精算者



備考

泉田 27-1 (V)
新保 154-0

点	①	②	③	④	⑤	⑥	③ × ⑤		② × ⑥	
	X	X-(定数)	X _{n-1} -X _{n+1}	Y	Y-(定数)	Y _{n-1} -Y _{n+1}	+	-	+	-
		-152.400			-37.600					
34	-152,487.541	-89.541	+ 35.451	-37,634.250	-34.250	- 15.778		1214.196750	1412.777898	
12	-152,517.785	-112.785	+ 25.037	-37,641.182	-41.182	+ 29.643		1031.073734		3550.786755
13	-152,544.578	-114.578	- 35.451	-37,663.893	-63.893	+ 15.778	2265.070743			1807.811684
26	-152,484.334	-84.334	- 25.037	-37,656.960	-56.960	- 29.643	1426.107520		2499.712762	
							3691.179263	2245.270484	3912.690660	8358.598439
							1445.907779			1445.907779
							1/2 = 722.9538895			
43	-152,451.022	+7.828	+ 35.646	-37,631.560	-31.560	- 14.477		1124.987760	837.175956	
35	-152,488.535	-88.535	+ 25.769	-37,623.636	-38.636	+ 28.617		995.611084		2533.606095
37	-152,483.597	-83.597	- 35.646	-37,660.177	-60.177	+ 14.477	2145.069342			1210.223769
42	-152,452.889	-52.889	- 25.769	-37,653.113	-53.113	- 28.617	1368.668897		1513.524513	
							3513.738239	2120.598044	2350.700469	3743.837864
							1393.139395			1393.139395
							1/2 = 696.5696975			

面積計算書

工区 3 ブロック 47 計測者 定寺 精算者 定寺 備考 青江 203
泉田 30-4

点	①	②	③	④	⑤	⑥	③ × ⑤		② × ⑥		
	X	X-(定数)	X _{n-1} -X _{n+1}	Y	Y-(定数)	Y _{n-1} -Y _{n+1}	+	-	+	-	
42	-152,452.889	-152400 52.889	+ 37.702	-37,652.113	-37600 53.113	-23.463					
37	-152,423.597	83.597	+ 23.713	-37,660.77	60.177	+ 37.570					
38	-152,476.602	76.602	- 37.702	-37,672.623	90.683	+ 23.463					
41	-152,445.895	45.895	-23.713	-37,683.640	83.640	-37.570					
							2002.466726	1240.934607			
							1426.977201		3140.939290		
							3418.930466		1797.312726		
							1983.355320		1724.275150		
							1402.285916	3429.443527	2965.209757	4938.052016	
							1972.842259			1972.842259	
									$\frac{1}{2} = 986.4211295$		
36	-152,424.334	-152400 84.334	+ 37.976	-37,656.760	-37600 56.960	-26.790					
13	-152,514.578	114.578	+ 22.512	-37,663.293	63.893	+ 40.659					
14	-152,526.246	106.246	- 37.976	-37,697.619	97.619	+ 26.790					
38	-152,476.602	76.602	+ 22.512	-37,690.683	90.683	- 40.659					
							2163.112960	2259.307860			
							1438.359216		4658.626902		
							3707.179144		2862.404340		
							2041.455696		3114.560718		
							5748.634840	3601.472176	5273.868578	7521.031242	
							2147.162664		2147.162664		
									$\frac{1}{2} = 1073.581332$		

面積計算書		工区	ブロック	計算者	精算者	備考	青江 933 新保 154(D)	
点	①	②	③	④	⑤	⑥	③ × ⑤	② × ⑥
	X	X-(定数)	X _{n-1} -X _{n+1}	Y	Y-(定数)	Y _{n-1} -Y _{n+1}	+ -	+ -
41	-152,445.895	-152,400 45.895	-23.717	-37,683.640	-37,600 83.640	-37.452	1983.679880	1723.449040
42	-152,452.885	42.885	+37.702	-37,653.131	53.131	-23.463	2003.144962	1240.840755
37	-152,483.597	83.597	+23.717	-37,660.177	60.177	+37.452	1427.217909	3139.234544
38	-152,476.602	76.602	-37.702	-37,690.683	90.683	+23.463	3418.930466	1797.312726
							5402.620346	3430.362871
							1972.257475	1972.257475
								1/2 = 986.1287375
42	-152,452.885	-152,400 52.885	-25.776	-37,653.131	-37,600 53.131	-28.588	1369.504656	1511.876380
43	-152,457.821	57.821	+25.650	-37,631.589	31.589	-14.495	1126.147850	838.115395
35	-152,488.535	88.535	+25.776	-37,638.636	38.636	+28.588	995.821536	2531.038580
37	-152,483.597	83.597	-35.650	-37,660.177	60.177	+14.495	2145.310050	1211.738515
							3514.814706	2122.029386
							1392.785320	2349.991775
								2742.777095
								1392.785320
								1/2 = 696.392660

面積計算書		工区	3	ブロック	42	計算者	測量者	備考	隅切Ⅱ	23-31	23~35
点	①	②	③	④	⑤	⑥	③ × ⑤	② × ⑥			
	X	X-(定数)	X _{n-1} -X _{n+1}	Y	Y-(定数)	Y _{n-1} -Y _{n+1}	+	-	+	-	
15	-152.501.304	^{152.400} -101.304	+3.594	-37.721.792	^{-37.700} 21.792	+2.254	78.320448				228.339216
16	-152.498.380	98.380	+0.670	-37.721.122	21.122	-2.924		14.151740	287.663120		
15	-152.501.974	101.974	+2.924	-37.718.868	18.868	+0.670					68.322580
							78.320448	69.321772			296.651796
							8.998676				8.998676
							1/2 = 4.499338				
40	-152.493.874	^{-152.40} 93.874	+18.514	-37.694.644	^{-37.600} 94.644	-21.202		1752.239016	1990.316548		
14	-152.506.846	106.846	+8.100	-37.697.619	97.619	+24.224		790.713900			2388.237504
15	-152.501.974	101.974	-8.466	-37.718.868	118.868	+23.503	1006.336488				2396.694922
16	-152.498.380	98.380	-13.642	-37.721.122	121.122	-0.047	1652.346324				4.623860
17	-152.488.332	88.332	-4.506	-37.718.821	118.821	-26.478	535.407426				2338.854696
							2194.090238	2542.952916	4333.795104	4984.932426	
							651.137322				651.137322
							1/2 = 325.568661				
							分筆後の座標なし				

面積計算書		工区	ウ	ブロック	42	計算者	精算者	備考	泉田2101(4)		
点	①	②	③	④	⑤	⑥	③	⑤	②	⑥	
	X	X-(定数)	X _{n-1} -X _{n+1}	Y	Y-(定数)	Y _{n-1} -Y _{n+1}	+	-	+	-	
45	-152,471.289	-152,470 1.289	-27.480	-37,572.812	-37,540 32.812	-21.198	101.673	760	27.324	222	
46	-152,474.531	4.531	+0.805	-37,558.665	18.665	-14.705		15.025	325	66.628	
22	-152,472.094	2.094	-0.277	-37,558.107	18.107	-9.986	5.015	639	20.910	684	
23	-152,474.254	4.254	+35.325	-37,548.679	8.679	-1.830		306.585	675	7.784	
28	-152,507.419	37.419	+27.757	-37,556.227	16.227	+31.184		451.800	689	1166.874	
30	-152,502.011	32.011	-36.120	-37,579.863	39.863	+16.535		1440.250	190	529.301	
								2346.939	589	773.411	
								122.648	081	1696.175	
								1573.527	900	1573.527	
									1/2 =	786.763	

面積計算書						工区	ブロック	計算者	精算者	備考	限り 水路	
点	①	②	③	④	⑤	⑥	③	×	⑤	②	×	⑥
	X	X-(定数)	X _{n-1} -X _{n+1}	Y	Y-(定数)	Y _{n-1} -Y _{n+1}	+		-	+		-
		-152.400			-37.700							
10	-152,437.915	-37.915	+2.254	-37,707.275	-7.275	+3.594			16.397850			136.266510
19	-152,440.839	-40.839	+0.670	-37,707.945	-7.945	-2.926			5.323150	119.413236		
21	-152,438.585	-38.585	-2.924	-37,704.351	-4.351	-0.670	12.722324			25.851950		
							12.722324		21.721000	145.265186		136.266510
									8.998676	8.998676		
									1/3 = 4.499338			
		-152.400			-37.700							
21	-152,438.585	-38.585	-31.631	-37,704.257	-204.351	+149.239	6463.826481					5758.386815
20	-152,440.463	-40.463	+35.946	-37,707.346	-207.346	-145.686			7453.259316	5894.892618		
46	-152,474.531	-74.531	+31.631	-37,558.665	-58.665	-149.239			1855.632615	11122.931909		
22	-152,472.094	-72.094	-35.946	-37,558.107	-58.107	+145.686	2088.714222					10573.086484
							8552.540703		9308.891931	17017.824527		16261.472289
									756.351228	756.351228		
									1/3 = 378.175614			

計年月日

計算者



検査者



B. NO. ~~74~~ 42 各筆面積計算書

2枚-1

地番	算式	隅切	地積	摘要
	青江 887の2 (A)		713.25	
	青江 887の2 (B)		166.82	
	泉田 18 (A)		483.19	
	青江 888 (B)		319.57	
	青江 889		214.10	
	泉田 21の1 (B)		732.20	
	青江 927の1 (B)		375.41	
	泉田 { 2301, 2306, 2308, 23010, 23013, 23024, 23034 }		657.41	
	泉田 2302, 2305, 23021		318.99	
	保 3- ⁴² 74 -1		398.10	
	泉田 27の1 (A)		722.95	
	泉田 30の4		1,073.58	
	泉田 23031, 23035		325.56	
	泉田 31の3		249.83	
	青江 932		971.48	
	青江 933		986.12	
	新保 154 (B)		696.39	
	青江 934		939.11	
	青江 935		961.29	
	泉田 21の1 (A)		786.76	
	青江 888 (A)		585.22	
	水路		378.17	
	計		13,055.50	

