

BLOCK NO. 34

街区計算

街区略図

工区

ウ

ブロック

~~87~~ 34

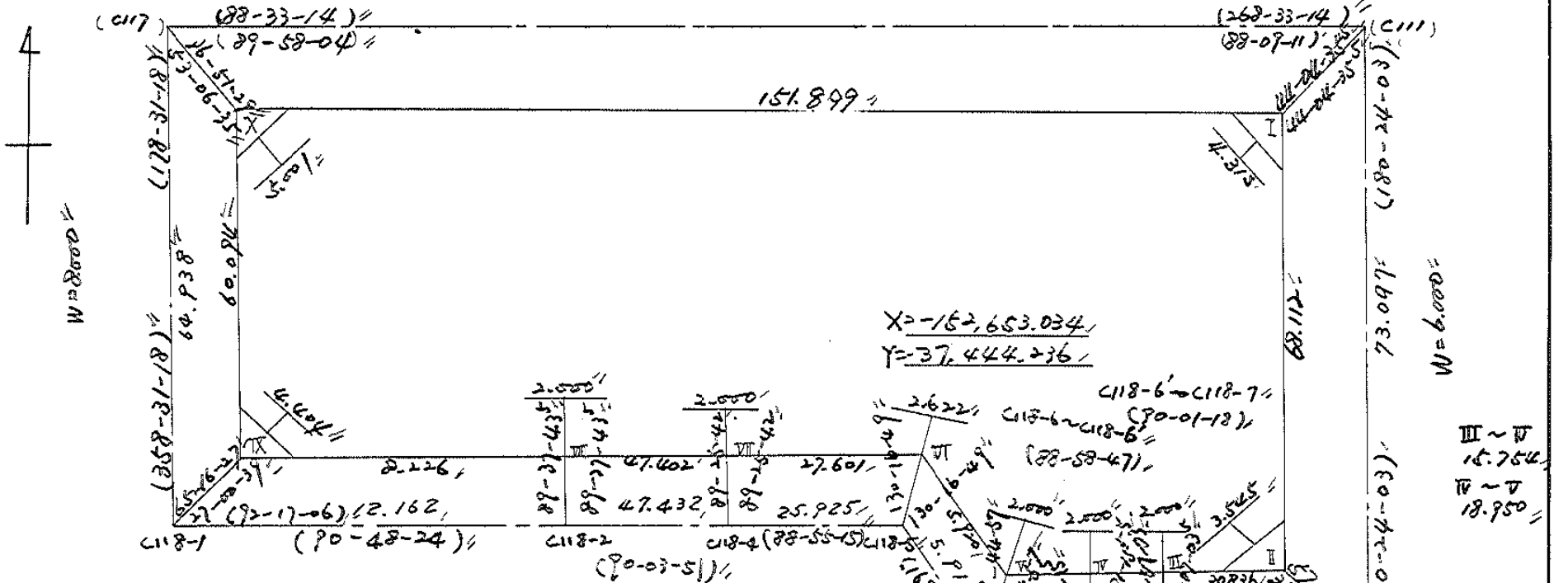
記入者

点検者

$X = -152,588.382$
 $Y = -37,531.428$

W=6.000
158.987

$X = -152,584.365$
 $Y = -37,372.479$



$X = -152,653.034$
 $Y = -37,444.236$

W=6.000

III~IV
15.754
IV~V
18.950

$X = -152,653.292$
 $Y = -37,529.753$

$X = -152,653.470$
 $Y = -37,517.592$

$X = -152,653.522$
 $Y = -37,470.157$

$X = -152,658.252$
 $Y = -37,443.156$

$X = -152,658.491$
 $Y = -37,406.768$

$X = -152,657.462$
 $Y = -37,372.990$

$X = -152,653.425$
 $Y = -37,422.535$

W=4.00

面積計算書

工区

3

ブロック

5734

計算者



精算者



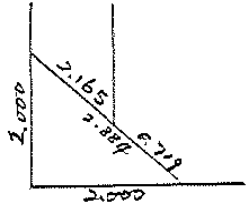
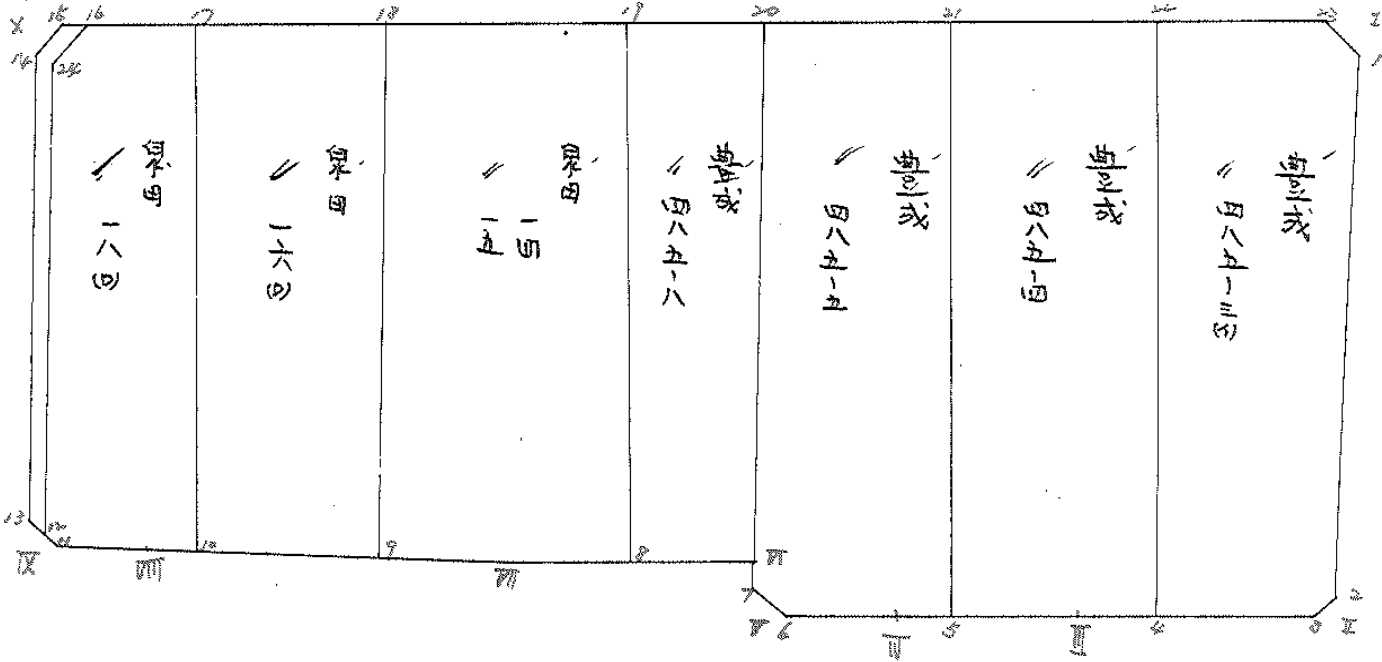
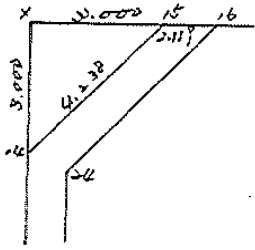
備考

全体

点	①	②	③	④	⑤	⑥	③ × ⑤		② × ⑥	
	X	X - (定数)	X _{n-1} - X _{n+1}	Y	Y - (定数)	Y _{n-1} - Y _{n+1}	+	-	+	-
I	-152,587.442	^{-152,500} 87.442	+ 64.272	-37,375.501	^{-37,300} 75.501	- 151.376				
II	-152,655.552	155.552	+ 69.049	-37,375.976	75.976	+ 31.297				
III	-152,656.491	156.491	+ 0.933	-37,406.798	106.798	+ 46.576				
IV	-152,656.485	156.485	+ 0.332	-37,422.552	122.552	+ 34.701				
V	-152,656.823	156.823	- 5.483	-37,441.499	141.499	+ 20.027	775.839017			
VI	-152,651.002	151.002	- 5.301	-37,442.579	142.579	+ 28.676	755.811279			
VII	-152,651.522	151.522	+ 0.468	-37,470.175	170.175	+ 74.998				
VIII	-152,651.470	151.470	- 0.168	-37,517.577	217.577	+ 55.627	36.552936			
IX	-152,651.354	151.354	- 60.190	-37,525.802	225.802	+ 9.775	13,591,022380			
X	-152,591.280	91.280	- 63.912	-37,527.852	227.352	- 150.301	14,530.521024			
							28,689.746636	10,318.628794	26,956.095477	46,327.203314
							19,371,107842			19,371,107842
										$\frac{1}{2} = 9,685,553921$
										m^2
							m^2			m^2
							9,685.55	(4.49 + 1.99 + 1.97 + 1.99 + 4.49) =		9,670.62

面地計算

B No. 34



面積計算書

工
区

ウ

ブ
ロ
ック

24

計
算
者



精
算
者



備
考

測量 425-3 (5)

点	①	②	③	④	⑤	⑥	③ × ⑤	② × ⑥
	X	X - (定数)	X _{n-1} - X _{n+1}	Y	Y - (定数)	Y _{n-1} - Y _{n+1}	+	-
22	-152,588.017	-152,500 28.017	- 68.660	-37,398.262	-37,300 98.262	- 18.032	6746.668920	1,587.122544
23	-152,597.518	27.518	+ 2.425	-37,378.509	78.500	- 22.740		190.362500 - 1,990.159320
1	-152,590.442	90.442	+ 66.034	-37,375.522	75.522	- 2.538		4,987.019748 + 229.541796
2	-152,653.552	153.552	+ 65.171	-37,375.962	75.962	+ 2.453		4,950.519502 + 376.663056
3	-152,665.613	155.613	+ 2.626	-37,377.975	77.975	+ 20.590		2,047.62300 + 3,200.95944
4	-152,656.178	156.178	- 67.596	-37,396.532	96.532	+ 20.287		6,525.177072 + 3,168.383088
							13,271.845992	10,332.664100 + 3,806.823660 + 6,746.00552
							2,939.181892	2,939.181892
								$\frac{1}{2} = 1469.590946$
							分筆後の座標なし	

面積計算書

工
区

ウ

ブ
ロ
ック

JK

計
算
者



精
算
者



備
考

号成 485-4

点	①	②	③	④	⑤	⑥	③ × ⑤	② × ⑥
	X	X-(定数)	X _{n-1} -X _{n+1}	Y	Y-(定数)	Y _{n-1} -Y _{n+1}	+ -	+ -
21	-152,588.590	88.590 ^{-152,500}	-68.469	-37,421.061	121.061 ^{-37,300}	-21.078	8,288,925,609	1,867,384,337
22	-152,589.017	88.017	+67.584	-37,398.262	98.262	-24.529	6,640,939,008	2,158,968,993
4	-152,656.178	156.178	+68.474	-37,396.532	96.532	+8.536	6,609,932,168	1,333,135,408
Ⅲ	-152,656.491	156.491	+0.308	-37,406.798	106.798	+22.808	32,893,784	3,569,246,776
5	-152,656.486	156.486	-67.897	-37,419.340	119.340	+14.263	8,102,827,980	2,231,959,818
							16,391,753,589	13,283,764,960
							4,026,353,325	7,134,341,954
							3,107,988,629	3,107,988,629
								$\frac{1}{2} = 1,553,994,314.5 =$
							分筆後の座標なし	

面積計算書

工区

ウ

ブロック

JK

計算者



精算者



備考

豊成 485-5

点	①	②	③	④	⑤	⑥	③ × ⑤	② × ⑥
	X	X-(定数)	X _{n-1} -X _{n+1}	Y	Y-(定数)	Y _{n-1} -Y _{n+1}	+ -	+ -
20	-152,589.127	-152,550 29.127	- 62.408	-37,442.160	-37,400 42.160	- 21.518	2,631.121280	7,917.834786
21	-152,588.594	88.594	+ 67.359	-37,421.061	+1.061	-22.820	1,418.647899	7,021.715080
5	-152,656.486	156.486	+ 67.891	-37,419.340	17.340	+ 1.491	1,313.011940	233.320676
11	-152,656.485	156.485	+ 0.301	-37,422.552	22.552	+ 20.159	6.788152	3,154.581115
6	-152,656.787	156.787	- 1.629	-37,439.499	29.499	+ 19.312	64.343871	3,027.870574
7	-152,654.856	154.856	- 5.785	-37,441.964	41.964	+ 3.080	242.183240	4769.564800
11	-152,651.002	151.002	- 65.729	-37,442.579	42.579	+ 0.296	2,798.675091	44,696.592
							5,736.323482	2,738.447991
							3,939.549866	6,937.425357
							2,997.875491	2,997.875491
							$\frac{1}{2} = 1,498.9377455$	

面積計算書

工
区

3

ブ
ロ
ク

JK

計
算
者



精
算
者



備
考

豊城 485-8

点	①	②	③	④	⑤	⑥	③ × ⑤	② × ⑥
	X	X-(定数)	X _{n-1} -X _{n+1}	Y	Y-(定数)	Y _{n-1} -Y _{n+1}	+ -	+ -
19	-152,589.549	^{-152,500} 89.549	-62.152	-37,458.863	^{-37,400} 58.863	-15.125	2658.453176	1254.422625
20	-152,589.127	89.127	+61.453	-37,442.160	42.160	-16.284	2590.858480	1451.344065
21	-152,651.002	151.002	+62.152	-37,442.579	42.579	+15.125	2646.370080	222.905250
8	-152,651.279	151.279	-61.453	-37,457.285	57.285	+16.284	2522.335105	2463.447285
							7178.788281	5237.228488
							1941.559793	2805.772693
								4747.332485
								1941.559793
								1/2 = 970.7798965

面積計算書		工区	ウ	ブロック	ウ	計算者	精算者	備考	泉母 16(ウ)	泉母 14.15
点	①	②	③	④	⑤	⑥	③ ×	⑤	② ×	⑥
	X	X-(定数)	X _{n-1} -X _{n+1}	Y	Y-(定数)	Y _{n-1} -Y _{n+1}	+	-	+	-
17	-152,590.802	-152,590 0.802	- 61.205	-37,509.455	-37,480 28.455	- 19.245	-1,741,588,275		15,434,490	
18	-152,590.277	0.277	+ 60.702	-37,487.659	7.659	- 22.366		464,916,618	- 6,195,382	
9	-152,651.504	61.504	+ 61.205	-37,486.089	6.089	+ 19.245		372,677,245		1,183,644,800
10	-152,651.482	61.482	- 60.702	-37,506.904	26.904	+ 22.366	1,633,126,608			1,375,106,472
							3,374,714,883	837,593,863	21,629,872	2,558,750,892
							2,537,121,020			2,537,121,020
								$\frac{1}{2} = 1,268,560,510$		
18	-152,590.277	-152,590 90.277	- 61.955	-37,487.659	27.659	- 22.226	5,430,913,345		2,457,881,602	
19	-152,589.549	29.549	+ 61.002	-37,458.863	58.863	- 30.374		3,590,760,726	2,719,961,326	
8	-152,651.279	151.279	+ 61.973	-37,457.285	57.285	+ 11.312		3,550,123,305		1,711,268,048
Ⅶ	-152,651.522	151.522	+ 0.225	-37,470.175	70.175	+ 28.804		15,789,375		4,364,439,688
9	-152,651.504	151.504	- 61.245	-37,486.089	26.089	+ 17.484	5,272,520,805			2,648,875,936
							10,703,434,150	7,156,673,406	5,177,847,928	8,724,603,672
							3,546,760,744			3,546,760,744
								$\frac{1}{2} = 1,773,380,372$		

分筆後の座標なし

面積計算書

工区

3

ブロック

34

計算者



縮算者



備考

象田 18(12)

点	①	②	③	④	⑤	⑥	③ × ⑤		② × ⑥	
	X	X - (定数)	X _{n-1} - X _{n+1}	Y	Y - (定数)	Y _{n-1} - Y _{n+1}	+	-	+	-
16	-152,591.151	41.151 = -152.550	-4.058 =	-37,522.235	22.235 = -37.500	-17.300 =	90.229630 =			712.076906 =
17	-152,590.802	40.802 = +60.331	+60.331 =	-37,508.655	8.455 = -15.331 =			510.098605 =		625.135462 =
10	-152,651.482	101.482 = +60.668	+60.668 =	-37,506.906	6.906 = +9.122 =			418.851872 =		925.718306 =
Ⅷ	-152,651.470	101.470 = -0.100	-0.100 =	-37,517.577	17.577 = +16.898 =		1,757.700 =			1,714.640060 =
11	-152,651.382	101.382 = -0.592	-0.592 =	-37,523.802	23.802 = +6.737 =		14,114.586 =			693.010534 =
12	-152,650.877	100.877 = -56.522	-56.522 =	-37,524.314	24.314 = +1.957 =		1376.275908 =			197.416289 =
24	-152,594.860	44.860 = -59.726	-59.726 =	-37,525.759	25.759 = -2.079 =		1,539.482034 =			92.263940 =
							3018.859858 =	928.950477 =	1430.976306 =	3520.785637 =
							2089.909381 =			2089.909381 =
							Σ = 10449546905			

面積計算書

工区 3
 ブロック
 34
 計算者
 精算者
 備考 陽切 IV V

点	①	②	③	④	⑤	⑥	③	×	⑤	②	×	⑥
	X	X-(定数)	X _{n-1} -X _{n+1}	Y	Y-(定数)	Y _{n-1} -Y _{n+1}	+		-	+		-
X	-152,571.220	-152,590 1.780	+3.075	-37,527.352	-37,520 7.352	+2.917			22.609400			3.733760
14	-152,594.279	4.279	-0.076	-37,527.275	7.275	-2.994	0.552900			12.811326		
15	-152,611.204	1.204	-2.999	-37,524.358	4.358	+0.077	13.069642					0.092908
							13.672542		22.607400	12.811326		3.826468
									8.984858	8.984858		
									$\frac{1}{2} = 4.492429$			
13	-152,644.355	-152,600 49.355	+0.028	-37,528.854	-37,520 5.854	-2.000			0.163912	98.710000		
11	-152,651.382	51.382	+1.999	-37,523.802	3.802	-0.052			7.600198	2.671864		
IX	-152,651.354	51.354	-2.027	-37,525.802	5.802	+2.052			11.760654			105.378408
									11.760654	7.764110	101.381864	105.378408
									3.996544			3.996544
									$\frac{1}{2} = 1.998272$			

V

IV

面積計算書

工
区

ウ

ブ
ロ
ック

24

計
算
者



精
算
者



備
考

陽明

点	①	②	③	④	⑤	⑥	③ × ⑤		② × ⑥	
	X	X-(定数)	X _{n-1} -X _{n+1}	Y	Y-(定数)	Y _{n-1} -Y _{n+1}	+	-	+	-
I	-152,587.442	7.442	+ 2.924	-37.375.501	5.501	-2.9787		16.024924	22.162276	
1	-152,590.442	10.442	+ 0.076	-37.375.522	5.522	+2.999		0.419672		31.315558
2	-152,597.518	7.518	- 3.000	-37.378.500	8.500	-2.021	25.500000		0.1572727	
							25.500000	16.504596	22.220154	31.315558
							8.995404			8.995404
								1/2 = 4.497702		
X	-152,591.280	1.280	+ 2.075	-37.527.352	7.352	+ 2.922		22.607408		2.740168
14	-152,594.279	4.279	- 0.076	-37.527.275	7.275	- 2.999	0.552902		12.832721	
15	-152,591.204	1.204	-2.999	-37.524.353	4.353	+ 0.077	13.054647			0.092708
							13.607547	22.607408	12.832721	3.832868
								8.999853	8.999853	
								1/2 = 4.4999265		

面積計算書

工区

ウ

ブロック

34

計算者

精算者

備考

陽 Ⅱ Ⅲ

Ⅲ

Ⅱ

点	①	②	③	④	⑤	⑥	③ × ⑤		② × ⑥	
	X	X-(定数)	X _{n-1} -X _{n+1}	Y	Y-(定数)	Y _{n-1} -Y _{n+1}	+	-	+	-
7	-152,654.856	-152,600 54.856	-0.036	-37,441.864	-37,400 41.864	-2.000	1,507,104		109,712,000	
6	-152,656.787	56.787	+1.967	-37,434.499	39.499	-0.365		77,694,533	20,727,255	
Ⅴ	-152,656.823	56.823	-1.931	-37,441.499	41.499	+2.365	80,134,569			134,386,395
							81,641,673	77,694,533	130,437,255	134,386,395
							3,947,140			3,947,140
								1/2 = 1,973,571		
Ⅱ	-152,655.552	-152,650 5.552	+2.061	-37,375.974	-37,370 5.976	+2.013		12,316,536		11,176,176
3	-152,655.613	5.613	-2.000	-37,377.975	7.975	-0.014	15,950,000		0,078,587	
2	-152,653.552	3.552	-0.061	-37,375.962	5.962	-1.999	0,363,682		7,100,448	
							16,313,682	12,316,536	7,179,030	11,176,176
							3,997,146			3,997,146
								1/2 = 1,998,573		

計年月
算日

計
算
者



檢
查
者



B.NO. 34

各筆面積計算書

地番	算式	隅切	地積	摘要
1	豊成 118500 (1)		1,469 59	
	豊成 48504		1,553 99	
	豊成 118505		1,498 93	
	豊成 118508		970 77	
	泉田 14.15		1,773 38	
	泉田 16 (1)		1,268 56	
	泉田 18 (1)		1,044 95	
	水路		90 36	
	計		9,670 53	
	合伴		9,670 62	
		差	-0 09	
	換地		9,580 17	
	水路		90 36	