

BLOCK NO. 62

街 区 計 算

街区略図

工区

W

ブロック

62

記入者

点検者

$X = -152,423.299$

$Y = -37,072.868$

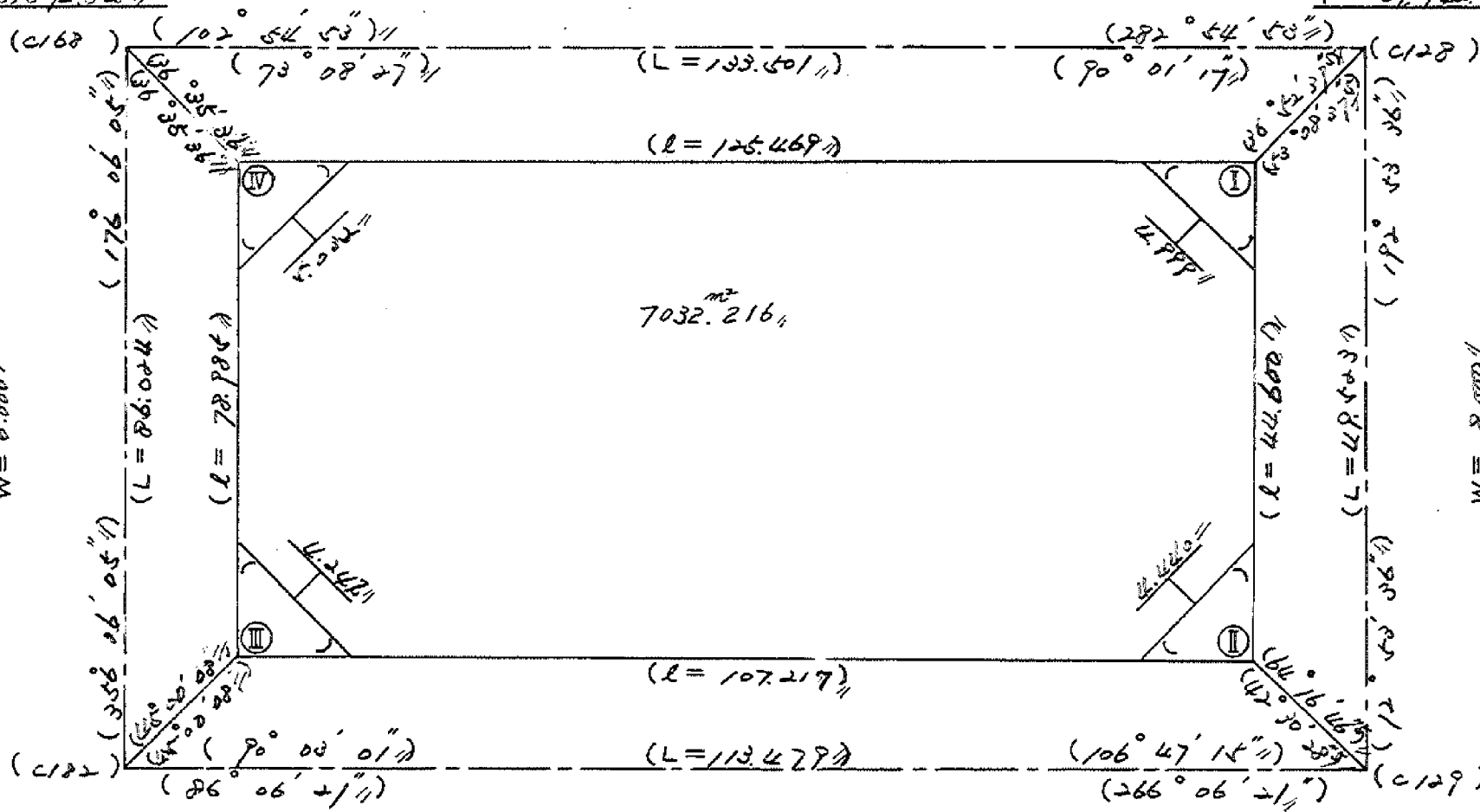
$W = 6,000$

$X = -152,453.738$

$Y = -37,942.738$



$W = 6,000$



7032.216^{m²}

$X = -152,502.724$

$Y = -37,064.019$

$W = 6,000$

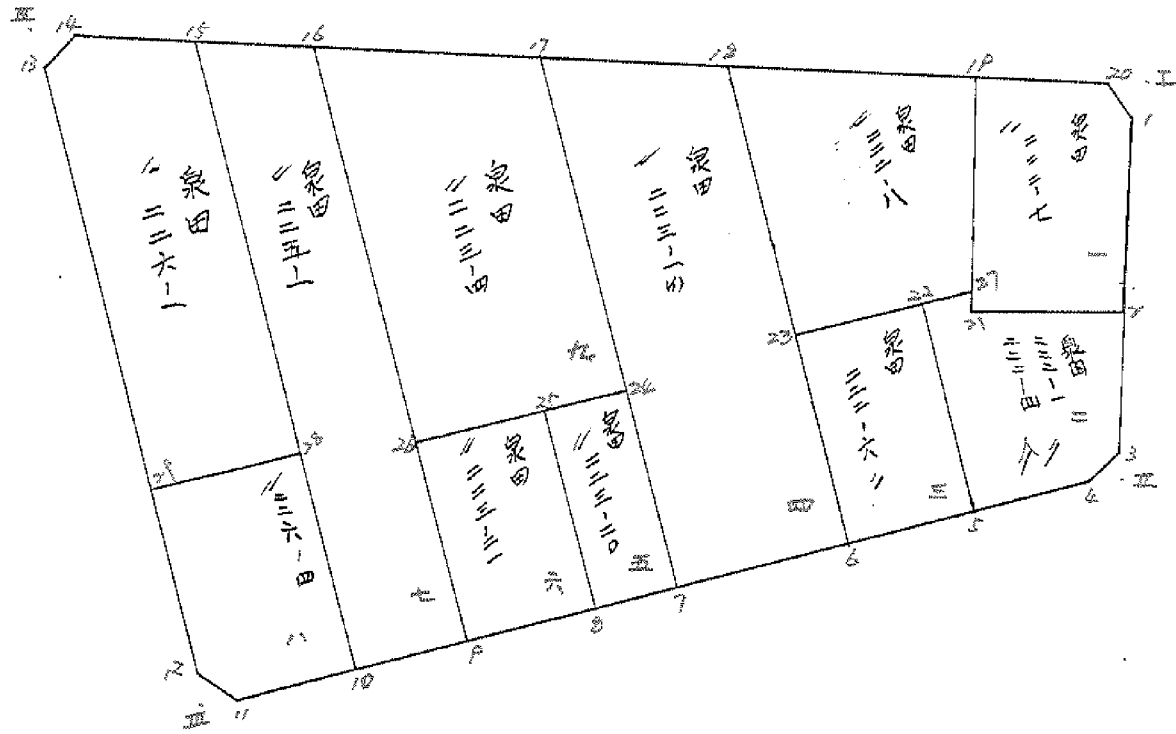
$X = -152,502.014$

$Y = -37,953.792$

$W = 8,000$

地 計 算

3IR BNO.62



5
枚-1

面積計算書		工区	ブロック	計算者	精算者	備考	1. 泉田 222-7 2. 泉田 222-6			
点	①	②	③	④	⑤	③	⑤	②	⑥	
	X	X-(定数)	X _{n-1} -X _{n+1}	Y	Y-(定数)	Y _{n-1} -Y _{n+1}	+	-	+	-
1	-152.419.692	-152.419.692 8.692	+25.528	-37.947.976	-37.947.976 7.976	+2.768		203.611328		24.059456
2	-152.480.625	-152.480.625 30.625	+18.214	-37.952.998	-37.952.998 12.998	+21.238		236.745572		650.413750
21	-152.476.906	-152.476.906 26.906	-28.574	-37.969.216	-37.969.216 29.214	+10.517		834.760836		282.970402
19	-152.452.051	-152.452.051 2.051	-21.809	-37.993.515	-37.993.515 23.515	-18.984		512.838635		38.936184
20	-152.455.097	-152.455.097 5.097	+6.641	-37.950.230	-37.950.230 10.230	-15.539		67.937430		79.202283
								1347.599471		508.294330
								118.138467		957.443608
								839.305141		839.305141
								1/2 = 419.6525705		
22	-152.475.422	-152.475.422 5.422	+23.982	-37.975.541	-37.975.541 5.541	-16.063		132.884262		87.093586
5	-152.500.372	-152.500.372 30.372	+23.929	-37.979.842	-37.979.842 3.842	+12.667		99.619218		384.722124
6	-152.501.351	-152.501.351 31.351	-23.982	-37.988.208	-37.988.208 18.208	+16.063		436.664256		503.591113
23	-152.476.390	-152.476.390 6.390	-23.929	-37.989.905	-37.989.905 19.905	-12.667		516.116745		80.942130
								952.781001		232.503480
								168.035716		883.132337
								720.277521		720.277521
								1/2 = 360.1387605		

面積計算書

工区

3

ブロック

62

計算者



積算者



備考

畠田 226-4
" 226-1

点	① X	② X-(定数)	③ X _{n-1} -X _{n+1}	④ Y	⑤ Y-(定数)	⑥ Y _{n-1} -Y _{n+1}	③ +	⑤ -	② +	⑥ -
	-152	-152.470	-38	-38.040						
10	505.360	35.360	+29.159	047.071	7.071	+12.246			206.183289	433.018560
11	506.324	36.324	-1.825	061.237	21.237	+17.363			38.757525	630.693612
12	503.335	33.335	-27.982	064.434	24.434	+4.914			683.712188	164.790998
29	478.342	8.342	-26.370	066.151	26.151	-15.443			689.601870	128.925506
28	477.165	7.165	+27.018	048.991	8.991	-19.080			242.918838	136.708200
									1412.071583	449.102127
									265.533706	1228.503162
									962.969456	962.969456
									1/2 = 481.484728	
	-152	-152.420	-38	-38.040						
13	430.719	10.719	-49.946	069.397	29.397	+0.526			1468.262562	5.638194
14	428.396	8.396	+1.024	066.677	26.677	-17.313			27.317248	145.359948
15	431.743	11.743	+48.769	052.084	12.084	-17.686			589.324596	207.686698
20	477.165	57.165	+46.599	048.991	8.991	+14.067			418.971609	804.140055
29	478.342	58.342	-46.446	066.151	26.151	+20.406			1214.609346	1190.526852
									2692.871908	7035.613453
									3353.046646	2000.305101
									1647.258455	1647.258455

分筆後の座標なし

1/2 823.6292275

面積計算書

工区

3

ブロック

62

計算者



精算者



備考

地図 222-1, 222-4
" 222-8



点	①	②	③	④	⑤	⑥	③ × ⑤		② × ⑥	
	X	X-(定数)	X _{n-1} -X _{n+1}	Y	Y-(定数)	Y _{n-1} -Y _{n+1}	+	-	+	-
>	⁻¹⁵² 480.625	^{-152.470} 10.625	+ 19.412	⁻³⁷ 952.998	^{-37.950} 2.998	- 12.623			58.197176	134.119375
3	496.318	26.318	+ 18.822	956.591	6.591	+ 7.256			124.055802	190.963408
4	499.447	29.447	+ 4.054	960.254	10.254	+ 17.251			41.569716	507.990197
5	500.372	30.372	- 24.025	973.842	23.842	+ 15.287	572.804050			464.296764
>2	475.422	5.422	- 25.406	975.541	25.541	- 5.073	648.894646			27.505806
>7	474.966	4.966	+ 1.484	968.769	18.769	- 6.327			27.853196	31.419882
>1	476.906	6.906	+ 5.659	969.214	19.214	- 15.771			108.732026	108.914526
									1221.698696	360.407916
									301.959589	1163.250369
									261.290780	861.290780
									$\frac{1}{2} = 430.645390$	
18	⁻¹⁵² 445.519	^{-152.440} 5.519	+ 24.339	⁻³⁷ 992.003	^{-37.960} 32.003	- 26.390	778.921017			145.646410
19	452.051	12.051	+ 29.447	963.515	3.515	- 23.234			103.506205	279.992934
>7	474.966	34.966	+ 24.339	968.769	8.769	+ 26.390			213.428691	922.752740
>3	476.390	36.390	- 29.447	989.805	29.905	+ 23.234	880.612535			845.485269
									1659.533552	316.934896
									425.639344	1769.238000
									1342.598656	1342.598656
									$\frac{1}{2} = 671.299328$	

面積計算書		工区	ウ	ブロック	62	計算者	精算者	備考	4. 泉田 223-1 (4)	5. 泉田 223-20
点	①	②	③	④	⑤	⑥	③ × ⑤	② × ⑥		
	X	X-(定数)	X _{n-1} -X _{n+1}	Y	Y-(定数)	Y _{n-1} -Y _{n+1}	+ -	+ -	+ -	- +
18	-152.445.519	-152440 5.519	+60.594	-37.992.003	-37980 12.003	-24.564		727.309782	135.568716	
6	-152.501.351	61.351	+57.218	-37.988.208	8.208	+16.558		469.645344	1015.849858	
7	-152.502.737	62.737	-60.594	-38.008.561	28.561	+24.564		1730.625234	1541.071668	
17	-152.460.757	0.757	-57.218	-38.012.772	32.772	-16.558		1875.148296	12.534406	
								3605.773530	1196.955126	148.103122
								2408.818404		2408.818404
								1/2 = 1204.409202		分筆あり
24	-152.678.742	-152470 8.742	+23.341	-38.010.141	-38000 10.141	-11.239		237.868131	98.251338	
7	-152.502.737	32.737	+24.649	-38.008.561	8.561	+7.978		211.020089	261.175786	
8	-152.503.391	33.391	-23.341	-38.018.169	18.169	+11.239		424.082629	375.281449	
25	-152.679.396	9.396	-24.649	-38.019.800	19.800	-7.978		488.050200	74.961288	
								912.132829	448.888220	173.212626
								463.244609		463.244609
								1/2 = 231.6223045		

面積計算書		工区	ウ	ブロック	# 67	計測者	精算者	備考	6. 泉田. 223-21	7. 泉田. 225-1
点	①	②	③	④	⑤	⑥	③ ×	⑤	② ×	⑥
	X	X-(定数)	X _{n-1} -X _{n+1}	Y	Y-(定数)	Y _{n-1} -Y _{n+1}	+	-	+	-
25	-152.479.396	-152450 29.396	+22.943	-38.019.800	-38010 9.800	-17.067			224.841400	501.701532
B	-152.503.391	53.391	+25.046	-38.018.169	8.169	+13.802			204.600774	736.902582
P	-152.506.462	54.442	-22.943	-38.033.602	23.602	+17.067	541.500686			929.161614
26	-152.680.468	20.448	-25.046	-38.035.236	25.236	-13.902	632.060856		420.243296	
							1173.561542	429.442174	921.944828	1666.064196
							744.119368			744.119368
								1/2 = 372.059684		
16	-152.436.896	-152430 4.896	+72.699	-38.038.338	-38030 8.338	-18.482			606.164262	90.480908
P	-152.506.462	74.442	+70.466	-38.033.602	3.602	+8.733			253.818532	650.101986
10	-152.505.360	75.360	-72.699	-38.067.071	17.071	+18.482	1241.044629			1392.803520
15	-152.631.743	1.743	-70.466	-38.052.084	22.084	-8.733	1556.171144		15.221619	
							2797.215773	859.982794	105.672527	2042.905506
							1937.232979			1937.232979
								1/2 = 968.6164895		

5
8-5

面積計算書

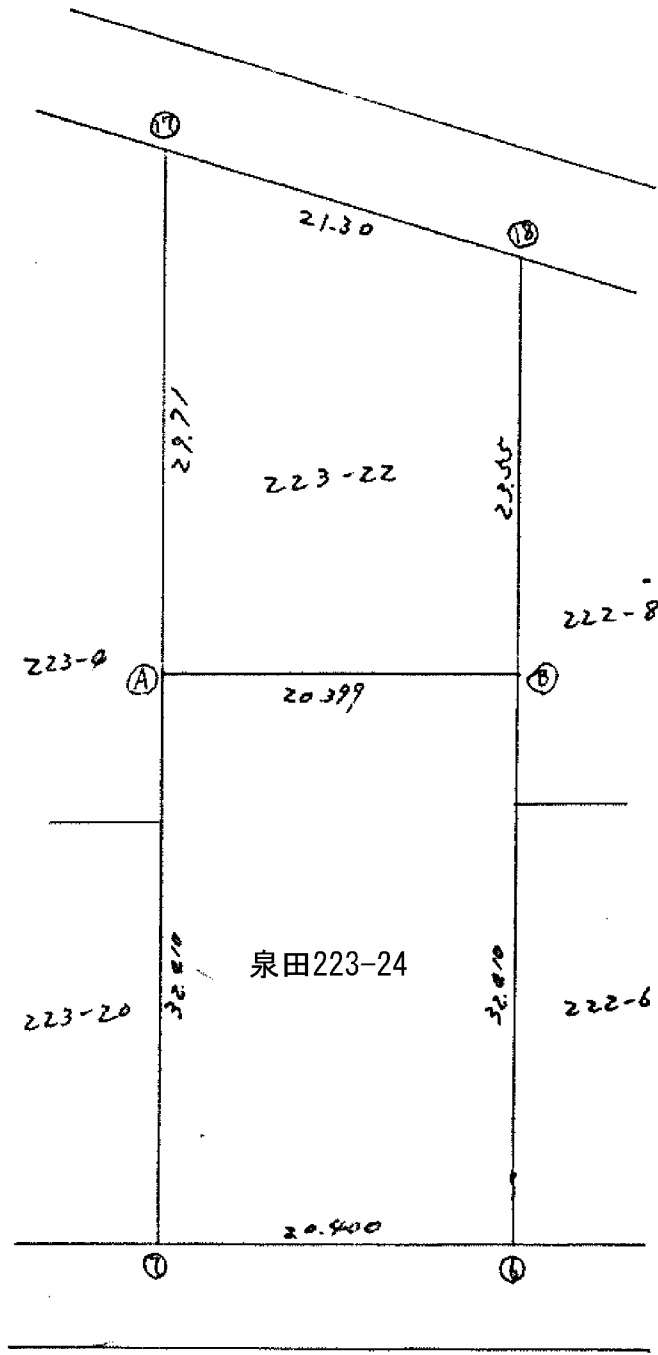
工区 ω ブロック ~~62~~ 計算者  精算者 

備考 8. 泉田 226-1
A. 泉田 223-4

点	①	②	③	④	⑤	⑥	③ ×	⑤	② ×	⑥
	X	X-(定数)	X _{n-1} -X _{n+1}	Y	Y-(定数)	Y _{n-1} -Y _{n+1}	+	-	+	-
15	-152.421.763	-152.400 31.743	+ 76.964	-38.052.084	-38020 12.024	-19.606		930.232.976	622.353.258	
10	-152.505.360	105.360	+ 74.581	-38.067.071	7.071	+ 9.153		527.362.241		964.360.080
11	-152.506.324	106.324	- 1.825	-38.061.227	21.227	+17.363	38.757.525			1846.103.612
12	-152.503.525	103.525	- 75.605	-38.064.634	24.634	+ 8.160	1847.332.570			844.845.600
13	-152.430.719	30.719	- 75.139	-38.069.397	29.397	+ 2.743	2208.861.183			68.902.717
14	-152.428.396	28.396	+ 1.024	-38.066.677	26.677	-17.313		27.317.248	491.619.948	
							4094.951.278	1284.712.475	1173.973.206	3724.212.009
							2610.238.203			2610.238.203
								$\frac{1}{2} =$	1305.119.402	
17	-152.440.757	-152.430 10.757	+ 43.848	-38.012.772	2.772	-28.147		121.546.656	302.977.279	
24	-152.478.762	48.762	+ 39.691	-38.010.191	0.191	+ 22.464		7.580.981		1094.940.288
26	-152.480.648	50.648	- 43.848	-38.035.236	25.236	+ 28.147	1106.548.128			1419.959.856
16	-152.434.894	4.894	- 39.691	-38.038.338	28.338	- 22.464	1124.763.58		109.938.816	
							2231.311.686	129.127.637	412.916.095	2414.900.144
							2102.184.049			2102.184.049
								$\frac{1}{2} =$	1051.092.0245	

面積計算書						工区	ブロック	番算者	精算者	備考
				A 62						隅切 1. 2.
点	①	②	③	④	⑤	⑥	③ × ⑤		② × ⑥	
	X	X-(定数)	X _{n-1} -X _{n+1}	Y	Y-(定数)	Y _{n-1} -Y _{n+1}	+	-	+	-
I	-152.455.768	-152450 5.768	+3.495	-37.947.300	-37940 7.306	-2.254		26.265.070	13.001.072	
1	-152.458.692	8.692	-0.671	-37.967.976	7.976	+2.924	5.351.896			25.415.408
20	-152.455.097	5.097	-2.924	-37.950.220	10.230	-10.670	29.912.420		3.414.990	
							35.264.416	26.265.070	16.416.062	25.415.408
							8.999.346			8.999.346
									1/2 = 4.499.673	
3	-152.496.318	-152490 6.318	-0.204	-37.956.591	-37950 6.591	-2.993	1.344.564		18.909.724	
II	-152.499.243	9.243	+3.129	-37.957.261	7.261	+3.663		22.719.669		33.857.109
4	-152.499.447	9.447	-2.925	-37.960.254	10.254	-0.670	29.992.950		6.329.490	
							31.337.514	22.719.669	25.239.264	33.857.109
							8.617.245			8.617.245
									1/2 = 4.308.622	

面積計算書		工区	ブロック	計算者	精算者	備考		
			ル	A#62		隅切. 3. 4		
点	①	②	③	④	⑤	③ × ⑤	② × ⑥	
	X	X-(定数)	X _{n-1} -X _{n+1}	Y	Y-(定数)	+	-	
11	-152.506.324	-152500 6.324	+2.993	-38.061.237	-38060 1.237	-0.204	3.702.341	1.290.096
III	-152.506.528	6.528	-2.789	-38.062.230	4.230	+3.197	11.797.470	20.870.016
12	-152.503.525	3.535	-0.204	-38.064.626	4.434	-2.993	0.904.536	10.580.255
							12.702.006	2.702.341
							8.999.665	11.870.341
								20.870.016
								8.999.665
								1/2 = 4.499.832
13	-152.630.719	-152420 10.719	-0.670	-38.069.397	-38060 9.397	+2.924	6.295.990	31.342.356
IV	-152.627.726	7.726	-2.323	-38.069.601	9.601	-2.720	22.203.123	21.014.720
14	-152.628.346	8.346	+2.993	-38.066.677	6.677	-0.204	19.984.261	1.712.724
							28.599.113	19.984.261
							8.614.852	22.727.504
								31.342.356
								8.614.852
								1/2 = 4.307.426



マシキ ケイソク

NO.	NAME	CODE	X	Y	D X	D Y	X * DY	Y * DX
1	Ⓐ		-152470.401	-38010.752	-33.722	-18.155	2768100.130155	1281798.781276
2	Ⓑ		-152489.015	-37990.406	30.950	-22.550	3458176.288250	-1175803.065700
3	Ⓒ		-152501.351	-37988.208	33.722	18.155	-2768652.027405	-1261038.350176
4	Ⓓ		-152502.737	-38008.561	-30.950	22.550	-3438936.719350	1176364.962950

コウケイ	-1322.328350	1322.328350
ハイ マシキ	1322.328350	
マシキ	661.164175	
マシキ	200.002182	