

BLOCK NO. 45

街 区 計 算

街区略図

工区

3

ブロック

~~7~~ 45

記入者

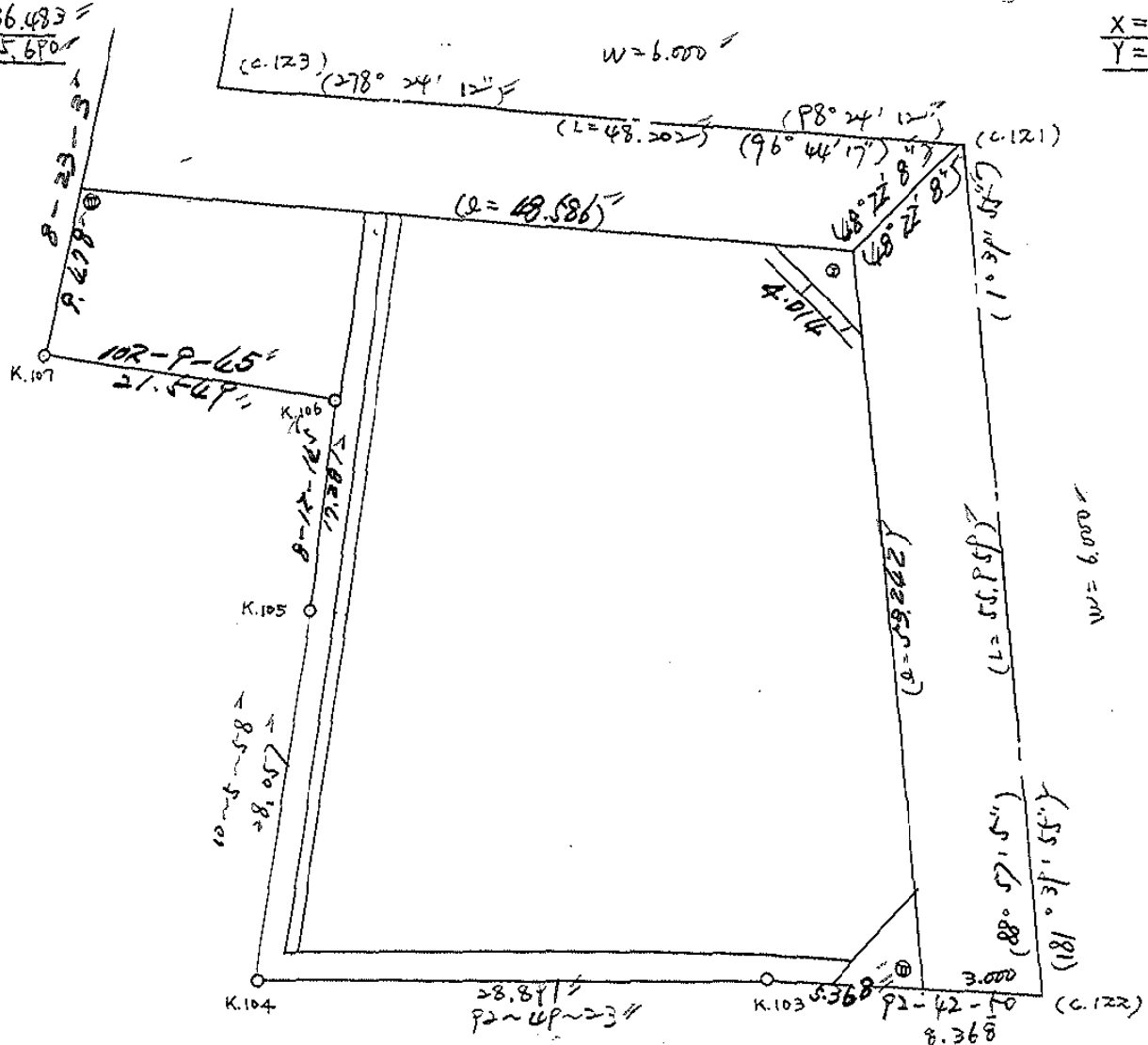


点検者



$X = -152,586.483$
 $Y = -37,775.690$

$X = -152,593.527$
 $Y = -37,728.006$



$X = -152,649.466$
 $Y = -37,729.635$

面積計算書

工区

ウ

ブロック

45

計算者

定

精算者

三

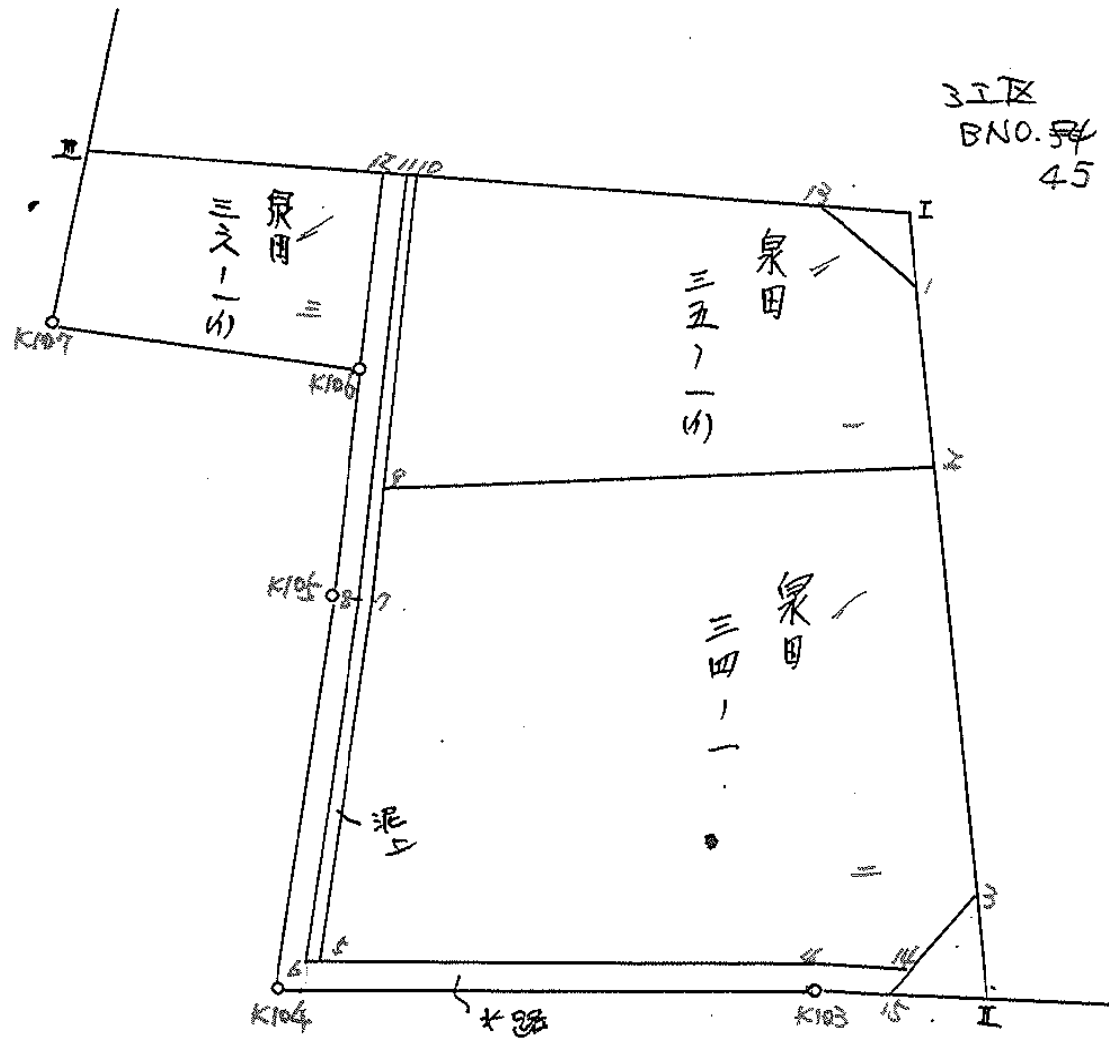
備考

全体

点	①	②	③	④	⑤	⑥	③ × ⑤		② × ⑥		
	X	X-(定数)	X _{n-1} -X _{n+1}	Y	Y-(定数)	Y _{n-1} -Y _{n+1}	+	-	+	-	
I	-152 596.105	-152.580 16.105	+ 60.319	-37 731.082	-37.730 1.082	- 46.517			65.265	148.749	146.285
II	649.324	69.324	+ 42.965	732.629	2.629	+ 6.911			139.244	985	479.098
K103	649.070	69.070	- 1.677	737.993	7.993	+ 34.220	13.404	261			3363.475
K104	647.647	67.647	- 29.045	766.849	36.849	+ 23.936	1070.279	205			1619.198
K105	620.025	40.025	- 44.726	761.929	31.929	- 7.386	1422.056	454			295.624
K106	602.921	22.921	- 21.644	759.463	29.463	+ 18.599	637.697	172			426.307
K107	598.381	18.381	+ 13.916	780.528	50.528	+ 19.683	703.147	648			361.793
III	589.005	9.005	- 2.276	779.166	49.166	- 49.446	111.856	296			445.261
							3964.441	038	204.510	143	1490.042
											1655249.973
							3759.930	893			3759.930
				Σ I	II						1/2 = 1879.965
				1879.96	(4.47 + 4.50)	= 1870.99					

圖地計算

3工区
BNO. 54
45



面積計算書		工区	ブロック	計算者	精算者	備考		
		3	45	(定)	(手)	1. 泉田 25-1 (B) 2. 泉田 24-1		
点	① X	② X-(定数)	③ X _{n-1} -X _{n+1}	④ Y	⑤ Y-(定数)	⑥ Y _{n-1} -Y _{n+1}	③ × ⑤	② × ⑥
							+	-
1	-152 599.106	-152.690 9.106	+ 19.888	-37 731.169	-37.730 1.169	- 2.424	22.313 872	22.077 200
2	614.755	24.755	+ 14.890	731.624	1.624	+ 26.344	24.181 360	642.418 024
9	613.994	23.994	- 22.101	757.524	27.524	+ 22.823	608.307 924	447.614 062
10	592.654	2.654	- 18.327	754.667	24.667	- 23.474	448.040 169	62.302 650
13	595.667	5.667	+ 6.450	734.049	4.049	- 23.278	26.116 050	131.916 426
							1046.348 093	172.611 282
							983.736 811	1/2 = 491.868 405
							216.296 276	1200.633 007
2	-152 614.755	-152.600 14.755	+ 32.332	-37 731.624	-37.730 1.624	- 24.982	52.407 168	368.609 410
3	646.326	46.326	+ 32.998	732.542	2.542	+ 2.489	83.880 916	113.918 624
14	647.753	47.753	+ 1.246	734.083	4.083	+ 4.379	4.087 418	246.863 387
4	647.572	47.572	- 1.421	737.921	7.921	+ 28.978	11.244 741	1378.441 416
5	646.332	46.332	+ 26.990	563.061	33.061	+ 20.443	892.316 390	942.261 496
7	620.582	20.582	- 32.338	758.474	28.474	- 4.437	920.792 212	113.962 434
9	613.994	13.994	+ 4.827	757.524	27.524	+ 26.840	160.382 348	374.738 900
							1984.746 691	141.474 502
							1843.271 189	2058.310 844
								2701.582 033
								1843.271 189

1/2 = 921.634 594 5

面積計算書						工区	ブロック	計算者	精算者	備考
						3	45	尾守	三浦	3. 原田 36-1 (A) 泥上げ
点	①	②	③	④	⑤	⑥	③ × ⑤		② × ⑥	
	X	X-(定数)	X _{n-1} -X _{n+1}	Y	Y-(定数)	Y _{n-1} -Y _{n+1}	+	-	+	-
12	⁻¹⁵² 592.142	^{-152.580} 12.142	+13.916	⁻³⁷ 757.909	^{-37.750} 7.909	-19.683			110.061644	238.990986
K106	602.921	22.921	+6.239	759.463	9.463	+22.619			49.039647	418.450099
K107	598.381	18.381	-13.916	780.528	30.528	+19.683			424.827648	361.793223
III	589.005	9.005	+6.239	779.146	29.146	-22.619			181.841894	203.684095
									406.669447	169,101301=442.675981
									437.568241	1/2 = 218.7841205
										437.568241
10	⁻¹⁵² 592.654	^{-152.590} 2.654	+28.074	⁻³⁷ 754.447	^{-37.750} 4.447	+3.038			124.844078	8.062842
7	620.582	30.582	+43.678	758.474	8.474	+8.614			454.867372	263.433348
5	646.332	56.332	+24.701	563.061	13.061	+4.493			324.680761	314.064876
6	646.283	56.283	-24.909	764.067	14.067	-3.600			264.461903	202.618800
8	620.423	30.423	+43.774	759.461	9.461	-8.631			408.764274	262.580913
11	592.508	2.508	-27.769	755.436	5.436	-4.014			150.942284	12.474112
									1024.179462	914.393211=477.774825
									108.786241	486.461076
										108.786241
									1/2 = 44.3931245	

面積計算書							工区	ウ	ブロック	45	計算者	精算者	備考	水路
点	①	②	③	④	⑤	⑥	③ × ⑤		② × ⑥					
	X	X-(定数)	X _{n-1} -X _{n+1}	Y	Y-(定数)	Y _{n-1} -Y _{n+1}	+	-	+	-				
11	⁻¹⁵² 592.508 =	^{-152.590} 2.508 =	+29.281 =	⁻³⁷ 755.436 =	^{-37.730} 25.436 =	+1.552 =				719.355516 =	3.892416 =			
8	620.423 =	30.423 =	+53.775 =	759.461 =	29.461 =	+8.631 =				1584.265275 =	262.590913 =			
6	646.283 =	56.283 =	+27.149 =	764.067 =	34.067 =	-21.540 =				924.894983, 1212.325920 =				
4	647.572 =	57.572 =	+1.670 =	737.921 =	7.921 =	-29.984 =				11.663870, 1726.238968 =				
14	647.753 =	57.753 =	+1.610 =	734.083 =	4.083 =	-2.295 =				6.573630, 132.543135 =				
15	649.182 =	59.182 =	+1.317 =	735.626 =	5.626 =	+3.910 =				7.409442 =	231.401620 =			
K103	649.070 =	59.070 =	-1.535 =	737.993 =	7.993 =	+31.223 =				12.269255 =	1844.362610 =			
K104	647.647 =	57.647 =	-29.065 =	766.849 =	36.849 =	+23.936 =				1070.279205 =	1399.838592 =			
K105	620.025 =	30.025 =	-55.505 =	761.929 =	31.929 =	-8.940 =				1772.219145 =	268.423600 =			
12	592.162 =	2.162 =	-27.517 =	757.909 =	27.909 =	-6.493 =				767.971953 =	13.909006 =			
										3222739559, 3254132716, 3253449309, 3722081151 =				
										368.606862 =	368.606862 =			
										¹ / ₂ = 184.303431 =				

面積計算書						工区	ブロック	計算者	管見者	備考	スミ切
点	①	②	③	④	⑤	⑥	③ × ⑤	② × ⑥			
	X	X-(定数)	X _{n-1} -X _{n+1}	Y	Y-(定数)	Y _{n-1} -Y _{n+1}	+ -	+ -			
I	⁻¹⁵² 596.105	^{-152.590} 6.105	+3.437	⁻³⁷ 731.082	^{-37.730} 1.082	-2.880	3.718836	17.582600			
1	599.104	9.104	-0.438	731.169	1.169	+2.967	0.512022	27.011568			
13	595.667	5.667	-2.999	736.069	4.069	-0.087	12.142951	0.493029			
							12.654973	3.718834			
							8.936139	18.075429			
							x 1/2 = 44680695				
3	⁻¹⁵² 646.326	^{-152.640} 6.326	+0.142	⁻³⁷ 732.542	^{-37.730} 2.542	-2.997	0.360764	18.959022			
II	649.324	9.324	+2.856	732.629	2.629	+3.084	7.508424	28.755216			
15	649.182	9.182	-2.998	735.626	5.626	-0.087	16.866768	0.798836			
							16.866768	7.869388			
							8.997360	19.757856			
							x 1/2 = 4.498680				

計年月
算日

計算者



検査者



B.NO. 45

各筆面積計算書

地番	算式	隅切	地積	摘要
1	泉田 2501 (4)		491.86	
2	泉田 2501		921.63	
3	泉田 2501 (4)		218.78	
	水路		184.30	
	泥土 管理道		54.39	
計			1870.96	
全体			1870.99	
差			0.03	
	換地		1632.27	
	水路		184.30	
	管理道		54.39	