

BLOCK NO. 36

街 区 計 算

街区略図

工区

3

ブロック 36 ~~177~~

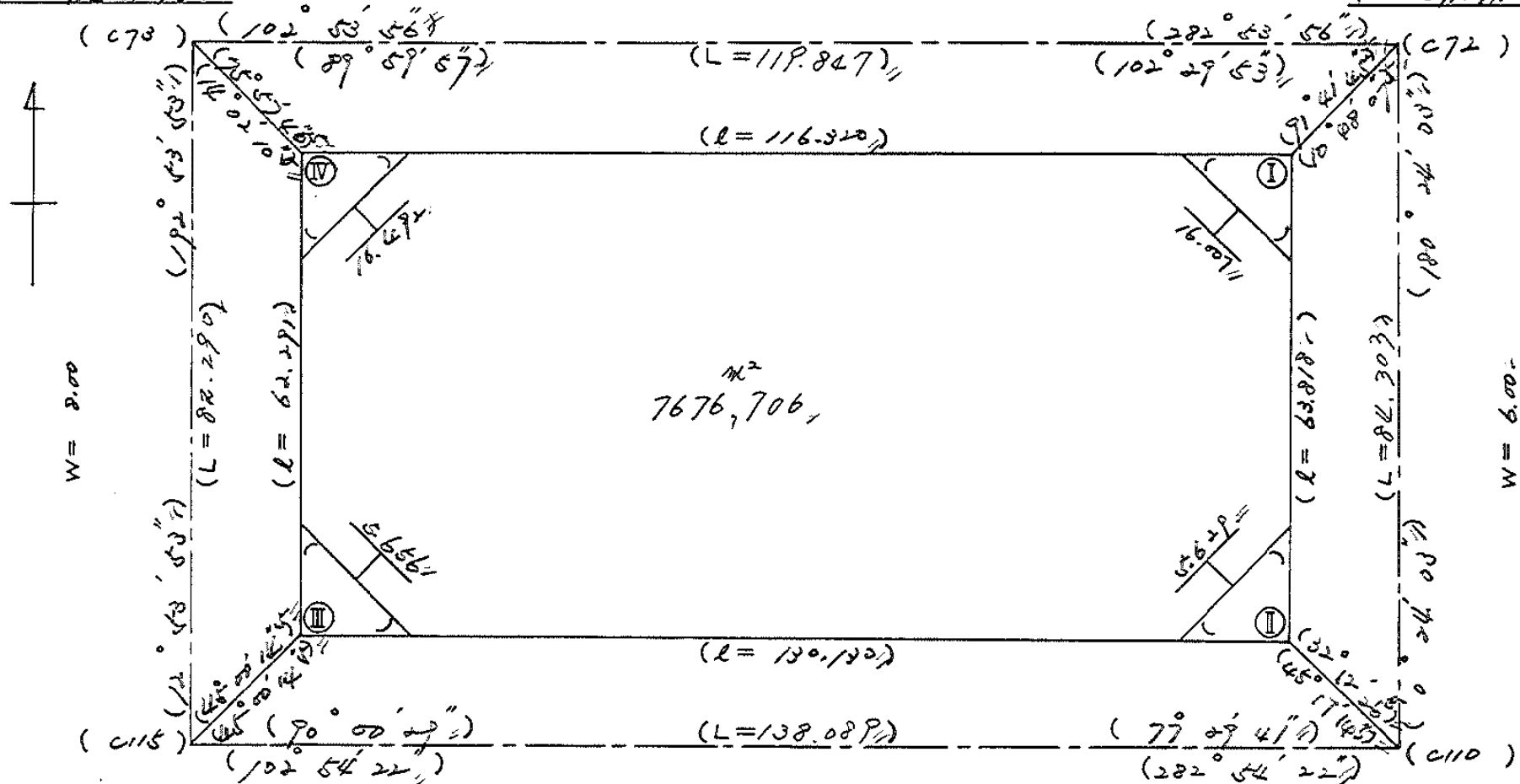
記入者

点検者

$X = -152,399.589$
 $Y = -37,438.196$

W = 32.00

$X = -152,426.342$
 $Y = -37,371.373$



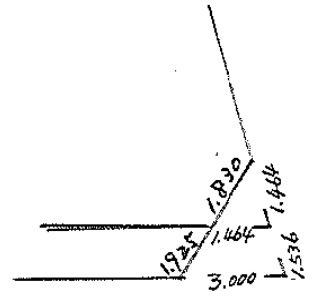
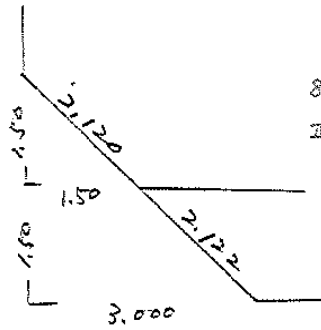
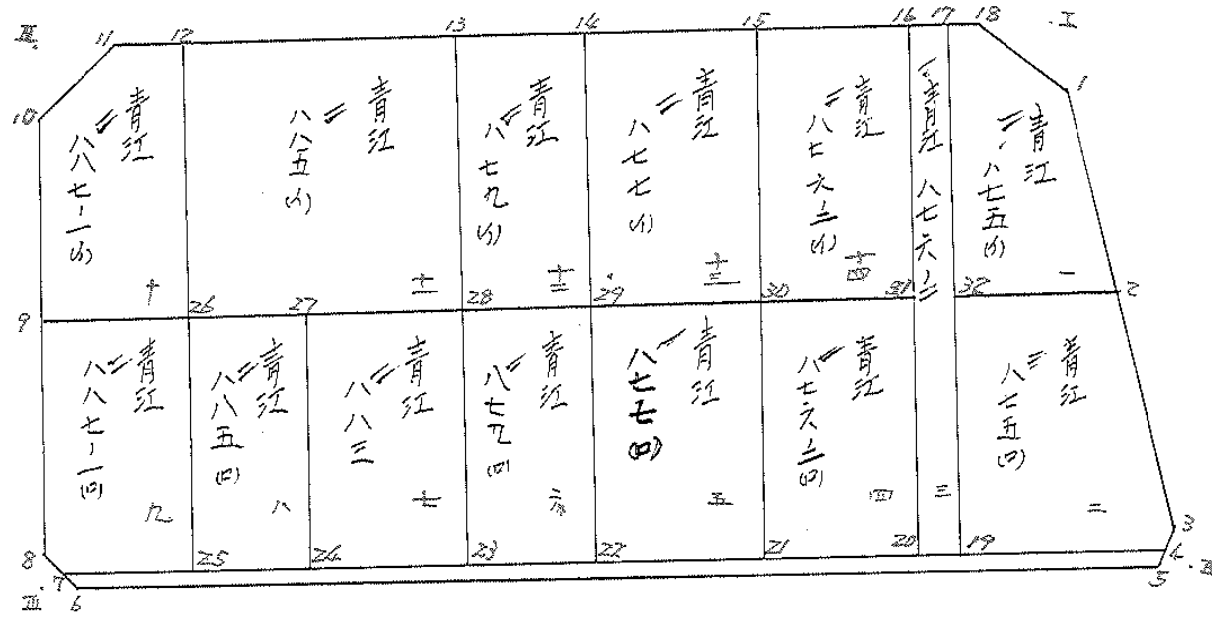
$X = -152,479.802$
 $Y = -37,506.564$

W = 8.00

$X = -152,510.645$
 $Y = -37,371.963$

面地計算

36
 BNO #67



面積計算書						工区	ウ	ブロック	36	計算者	精算者	備考	1. 青江 875(4)	2. 青江 875(4)
点	①	②	③	④	⑤	⑥	③	×	⑤	②	×	⑥		
	X	X-(定数)	X _{n-1} -X _{n+1}	Y	Y-(定数)	Y _{n-1} -Y _{n+1}	+		-	+		-		
1	-152.450.794	-152,400 50.794	+33.722	-37.376.546	-37,300 74.544	-8.307			2513.772768	421.945758				
2	-152.473.812	73.812	+19.202	37.376.705	74.705	+16.824			1434.485410				1241.813088	
32	-152.469.996	69.996	-34.053	-37.391.368	91.368	+9.753			3111.354504				682.670988	
17	-152.439.759	39.759	-29.906	-37.384.658	84.458	-8.356			2525.800948				332.226204	
18	-152.460.090	40.090	+11.035	-37.383.012	83.012	-9.914			916.037420	397.452260				
									2637.155452	4864.295598	1151.624222		1924.484076	
									772.859854				772.859854	
													1/2 = 386.429927	
2	-152.473.812	-152,400 73.812	+32.865	-37.376.705	-37,300 74.705	-16.459			2455.179825	1214.871708				
3	-152.502.861	102.861	+30.184	-37.376.909	74.909	+1.639			2261.053256				168.589179	
4	-152.503.996	103.996	-3.828	-37.376.546	76.344	+23.097			292.244832				2401.995612	
19	-152.499.033	99.033	-34.000	-37.398.086	98.086	+15.024			3332.204000				1487.871792	
32	-152.469.996	69.996	-25.221	-37.391.368	91.368	-23.301			2304.392328				1630.976796	
									5928.841160	4716.233081	2825.848504		4058.456583	
									1212.608079				1212.608079	
													1/2 = 606.3040395	

面積計算書						工区	ブロック	計算者	精算者	備考
						ウ	#736	(印)		青江 876-2 4. 青江 876-7(1)
点	①	②	③	④	⑤	⑥	③ × ⑤	② × ⑥		
	X	X-(定数)	X _{n-1} -X _{n+1}	Y	Y-(定数)	Y _{n-1} -Y _{n+1}	+	-		
19	-152.499.003	-152,400 99.033	+ 58.534	-37.398.006	-37,300 98.006	+ 16.775	6736.683204	1661.278575		
20	-152.498.293	98.293	- 60.013	-37.401.233	101.233	- 10.322	6075.296029	1014.580346		
16	-152.499.020	99.020	- 58.534	-37.387.684	87.684	- 16.775	5132.495256	654.560500		
17	-152.499.759	99.759	+ 60.013	-37.384.458	84.458	+ 10.322	6068.577954	410.392398		
							11207.791285	2071.670973		
							402.530127	402.530127		
								1/2 = 201.2650635		
21	-152.469.257	-152,400 69.257	+ 33.832	-37.394.549	-37,300 94.549	- 14.299	3200.338040	990.305843		
20	-152.498.293	98.293	+ 24.239	-37.401.233	101.233	+ 27.573	2053.786687	2710.232889		
21	-152.493.496	93.496	- 33.832	-37.422.168	122.168	+ 14.299	4133.187776	1336.899304		
20	-152.464.461	64.461	- 24.239	-37.415.592	115.592	- 27.573	2800.380148	1777.383153		
							6933.567924	4047.132193		
							1279.443197	1279.443197		
								1/2 = 639.7215985		

分筆後の座標なし

面積計算書										工区	ブロック	計算者	精算者	備考
	①	②	③	④	⑤	⑥	③ × ⑤	② × ⑥	⑥		ウ	36		5.青江878(10) 6.青江879(9)
点	X	X-(定数)	X _{n-1} -X _{n+1}	Y	Y-(定数)	Y _{n-1} -Y _{n+1}	+	-	+	-				
20	-152.660.661	-152,400 64.461	+33.343	-37.615.532	-37,400 15.532	-12.177		517.883476		724.941.597				
21	-152.493.696	93.496	+24.725	-37.622.168	22.168	+25.452		548.103.800						2379.660.192
22	-152.489.186	89.186	-33.343	-37.660.984	40.984	+12.177	1366.529.512							1086.017.922
29	-152.460.153	60.153	-24.725	-37.634.365	34.365	-25.452	849.180.125							1531.014.156
								2215.709.627	1065.987.276	2215.955.743	33465.678.114			
								1149.722.361						1149.722.361
														1/2 = 74.861.180.5
27	-152.660.153	-152,400 60.153	+32.449	-37.634.365	-37,400 34.365	-8.275		1114.460.905		487.766.075				
22	-152.489.186	89.186	+25.615	-37.660.984	40.984	+21.555		1049.805.160						1922.404.230
23	-152.485.768	85.768	-32.449	-37.655.900	45.900	+8.275	1813.899.100							709.730.200
28	-152.656.727	46.727	-25.615	-37.669.259	49.259	-21.555	1261.769.285							1222.966.035
								3075.669.385	2164.266.065	1720.732.110	2632.134.430			
								911.402.320						911.402.320
														1/2 = 455.701.160.5

面積計算書		工区	ブロック	計算者	備考	7. 青江 883		8. 青江 885(10)		
点	①	②	③	④	⑤	⑥	③ × ⑤	② × ⑥	③ × ⑥	
	X	X-(定数)	X _{n-1} -X _{n+1}	Y	Y-(定数)	Y _{n-1} -Y _{n+1}	+	-	+	-
28	-152.456.737	-152,400 +6.737	+32.938	-37.466.257	-37,400 49.257	-10.418	1822.492942		191.086.066	
23	-152.425.768	25.768	+25.122	-37.455.900	25.900	+23.702	1404.319800		2032.873136	
24	-152.481.859	81.859	-32.938	-37.672.961	72.961	+10.418	2403.189418		852.207062	
27	-152.452.830	52.830	-25.122	-37.466.318	66.318	-23.702	1866.040796		1252.176660	
							4069.230214	3026.812942	1843.262726	2825.690198
							1042.417472		1042.417472	
									1/2 = 521.208736	
27	-152.452.830	-152,400 52.830	+32.134	-37.466.318	-37,400 66.318	-6.915	2131.062612		365.319450	
24	-152.481.859	81.859	+25.922	-37.672.961	72.961	+20.204	1891.295062		1653.879236	
25	-152.478.752	78.752	-32.134	-37.486.520	86.522	+6.915	2780.297948		544.570080	
26	-152.464.725	49.725	-25.922	-37.479.876	79.876	-20.204	2020.545672		1004.643900	
							4850.843620	4022.357654	1369.963350	2198.449316
							828.484966		828.484966	
									1/2 = 414.242983	

面積計算書		工区	ブロック	計算者	精算者	備考				
				36		9.青江.887-10) 10.青江.887-14)				
点	①	②	③	④	⑤	⑥	③ × ⑤	② × ⑥		
	X	X-(定数)	X _{n-1} -X _{n+1}	Y	Y-(定数)	Y _{n-1} -Y _{n+1}	+	-	+	-
26	-152.469.725	-152,400 49.725	+32.443	-37.479.876	-37,400 79.876	-8.269		2591.417068	411.176025	
25	-152.478.752	78.752	+25.944	-37.486.522	86.522	+20.100		2244.726768	1582.914200	
7	-152.475.669	75.669	-4.879	-37.499.976	99.976	+14.581	487.782904		1103.329689	
8	-152.473.873	73.873	-29.360	-37.501.103	101.103	-5.185	2968.384080		288.031505	
9	-152.446.309	46.309	-24.148	-37.494.791	94.791	-21.227	2289.013068		983.001143	
							5745.180052	4236.143836	1777.228673	2686.244889
							909.036216			909.036216
									1/2 = 454.518108	
12	-152.419.693	-152,400 19.493	+31.694	-37.472.956	-37,400 72.956	+0.537		2312.267464		10.467741
26	-152.469.725	49.725	+26.816	-37.479.876	79.876	+21.835		2141.954816		1085.945375
9	-152.446.309	46.309	-25.118	-37.494.791	94.791	+9.945	2380.960338		460.543005	
10	-152.424.607	24.607	-28.278	-37.489.821	89.821	-15.452	2529.958238		380.227364	
11	-152.418.031	18.031	-5.114	-37.479.339	79.339	-16.865	405.739646		304.092815	
							5326.658222	4454.222280	684.320179	556.756121
							872.435942			872.435942
									1/2 = 436.217971	

面積計算書						工区	ブロック	計算者	精算者	備考
						ウ		36		11. 青江 8856) 12. 青江 8794)
点	①	②	③	④	⑤	⑥	③ × ⑤	② × ⑥		
	X	X-(定数)	X _{n-1} -X _{n+1}	Y	Y-(定数)	Y _{n-1} -Y _{n+1}	+	-		
13	-152.226.503	-152.400 26.503	+37.244	-37.462.366	-37.400 42.344	-23.697	1577.059936	628.041591		
28	-152.456.737	+6.737	+23.222	-37.449.259	49.259	+37.532	1143.892498	2129.453084		
26	-152.449.725	49.725	-37.244	-37.479.876	79.876	+23.697	2574.901744	1178.333325		
12	-152.419.693	19.693	-23.222	-37.472.956	72.956	-37.532	1694.184232	781.611276		
							4669.085976	2720.952424		
							1948.133542	1389.652867		
								3207.786409		
								1948.133542		
								1/2 = 974.066771		
14	-152.429.918	-152.400 29.918	+33.650	-37.427.632	-37.400 27.432	-7.999	923.086800	239.314082		
29	-152.460.152	60.152	+26.819	-37.436.265	34.345	+21.827	921.098455	1312.959531		
28	-152.456.737	+6.737	+33.650	-37.469.259	49.259	+7.999	1657.565350	453.839263		
13	-152.426.503	26.503	-26.819	-37.462.366	42.344	-21.827	1135.623736	578.480981		
							2793.189086	1804.184365		
								817.795063		
							949.003731	1766.798794		
								949.003731		
								1/2 = 474.5018655		

面積計算書						工区	ブロック	計算者	精算者	備考
						36				13. 青江 877 (1) 14. 青江 876-2 (1)
点	①	②	③	④	⑤	⑥	③ × ⑤	② × ⑥		
	X	X-(定数)	X _{n-1} -X _{n+1}	Y	Y-(定数)	Y _{n-1} -Y _{n+1}	+	-		
15	-152.634.226	-152,400 34.226	+34.543	-37.608.622	-37,400 8.622	-11.900		297.829.746	407.289.400	
20	-152.664.661	64.461	+25.927	-37.415.532	15.532	+25.723		402.698.164	1658.130.303	
29	-152.660.153	60.153	-34.543	-37.422.365	34.345	+11.900	1186.379.335		715.820.700	
14	-152.629.918	29.918	-25.927	-37.427.622	27.432	-25.723	711.229.464		769.530.714	
							1897.608.799	700.827.910	1176.870.114	2373.951.003
							1197.020.889			1197.080.889
										1/2 = 498.540.444
16	-152.639.020	-152,400 39.020	+35.031	-37.397.686	-37,300 87.684	-14.027		3071.658.204	547.333.540	
21	-152.669.257	69.257	+25.441	-37.396.595	94.595	+27.848		2406.591.395	1928.668.936	
20	-152.666.661	64.461	-35.031	-37.615.532	115.532	+14.027	4047.201.492		904.194.447	
15	-152.636.226	34.226	-25.441	-37.608.622	108.622	-27.848	2763.452.302		953.125.648	
							6810.653.794	5478.249.599	1500.459.128	2822.863.383
							1332.404.195			1332.404.195
										1/2 = 666.202.097.5

分筆後の座標なし

面積計算書										工区	ω	ブロック	107 36	計算者	精算者	備考	陽加 1.2		
点	①	②	③	④	⑤	⑥	③	×	⑤	②	×	⑥							
	X	X-(定数)	X _{n-1} -X _{n+1}	Y	Y-(定数)	Y _{n-1} -Y _{n+1}	+		-	+		-							
I	-152,442.044	-152,440	+10.704	37,374.683	-37,370	2.468			47.986032	17.308592									
1	-152,650.796	2.044	-1.754	37,374.544	4.483	+8.529	8.878976					92.062026							
18	-152,440.090	0.090	8.750	37,383.012	13.012	-0.061	113.855000			0.005490									
							122.733976	47.986032		17.314082		92.062026							
							74.747444					74.747444							
										1/2 = 37.373972									
3	-152,502.861	-152,500	+0.670	37,374.909	-37,370	2.924			3.289030	8.365564									
II	-152,505.861	2.861	+2.330	37,374.930	4.909	+2.945	11.486900					17.260645							
5	-152,605.191	4.861	-3.000	37,377.854	7.854	-0.021	23.562000			0.109011									
							23.562000	14.775930		8.474575		17.260645							
							8.786070					8.786070							
										1/2 = 4.393035									

面積計算書						工区	ブロック	計算者	精算者	備考
		W		107 36						陽切 J. 4.
点	①	②	③	④	⑤	⑥	③ × ⑤	② × ⑥		
	X	X-(定数)	X _{n-1} -X _{n+1}	Y	Y-(定数)	Y _{n-1} -Y _{n+1}	+	-		
6	-152.477.667	-152,470 7.467	+2.924	-37.488.849	-37,490 2.849	+0.670		25.874.476	5.002.890	
Ⅱ	-152.476.797	6.797	-3.594	-37.501.773	11.773	+2.254	42.312.162		15.320.438	
8	-152.473.873	3.873	+0.670	-37.501.103	11.103	-2.924		7.439.010	11.324.652	
							42.312.162	33.313.486	11.324.652	20.223.328
							8.998.676			8.998.676
										1/2 = 4.499.338
10	-152.424.607	-152,410 14.607	-1.953	-37.489.821	-37,470 19.821	+8.529	38.710.413			124.583.103
Ⅳ	-152.416.078	6.078	-6.576	-37.487.868	17.868	-10.482	117.499.968			63.709.496
11	-152.418.031	8.031	+8.529	-37.479.339	9.339	+1.953		79.652.331		15.684.543
							156.210.381	79.652.331	63.709.496	140.267.646
							76.558.050			76.558.050
										1/2 = 38.279.025

面積計算書						工区	ブロック	計算者	精算者	備考
		3		107 36						水路
点	①	②	③	④	⑤	⑥	③ × ⑤	② × ⑥		
	X	X-(定数)	X _{n-1} -X _{n+1}	Y	Y-(定数)	Y _{n-1} -Y _{n+1}	+	-		
K	-152.503.996	-152,470 33.996	+ 29.522	37.376.366	-37,300 76.344	- 122.122		2253.827568, 4151.659512		
J	-152.505.191	35.191	+ 26.529	37.377.854	77.854	+ 122.505	2065.388766	4311.073455		
I	-152.477.467	7.467	- 29.522	37.498.869	198.849	+ 122.122	5870.420178	911.884974		
7	-152.475.669	5.669	+ 26.529	37.699.976	199.976	- 122.505		5305.163304, 694.480845		
							2935.808944, 7558.990872, 4846.140357, 222.958429			
							376.818072	376.818072		
								1/2 = 188.409036		

計年
月
算日

計
算
者

檢
查
者

B.NO. ~~107~~ 36 各筆面積計算書

地番	算式	隅切	地積	摘要
	青江 875 (A)		386.42	
	青江 875 (B)		606.30	
	青江 876.0.2		201.26	
	青江 876.0.2 (A)		639.72	
	青江 877 (B)		574.86	
	青江 879 (B)		455.70	
	青江 883		521.20	
	青江 885 (B)		414.24	
	青江 887.0.1 (A)		454.51	
	青江 887.0.1 (B)		436.21	
	青江 885 (A)		974.06	
	青江 879 (A)		474.50	
	青江 877 (A)		598.54	
	青江 876.0.2 (A)		666.20	
	水路		188.40	
	計		7,592.72	
	全体		7,592.17	
		差	-0.05	
	換地		7,403.72	
	水路		188.40	