

BLOCK NO. 31

街 区 計 算

街区略図

工区

3

ブロック

31

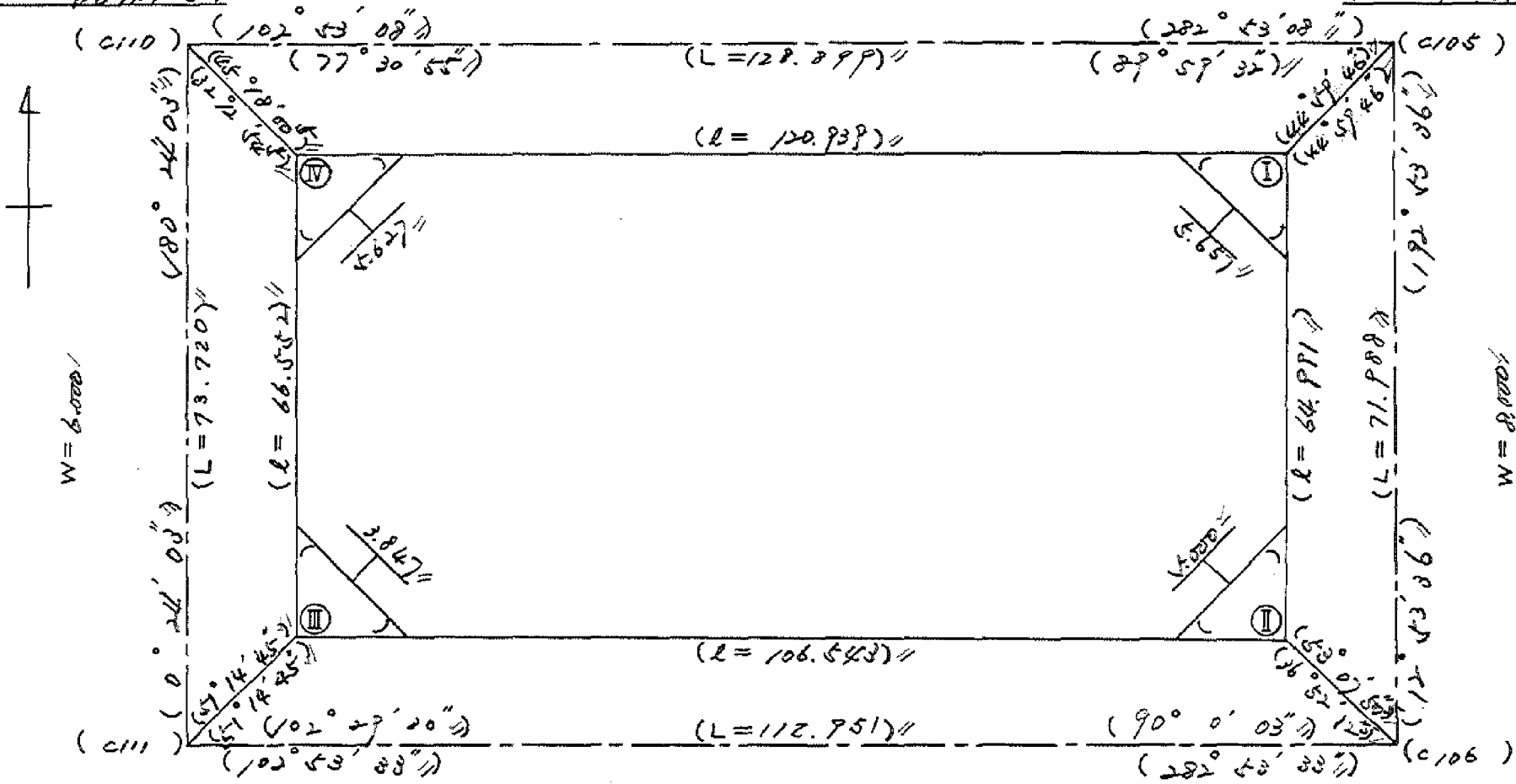
記入者

点検者

$X = -152,510.645 //$
 $Y = -37,271.963 //$

$W = 8.000 //$

$X = -152,537.370 //$
 $Y = -37,246.311 //$



$X = -152,594.365 //$
 $Y = -37,372.479 //$

$W = 6.000 //$

$X = -152,609.867 //$
 $Y = -37,262.375 //$

面地計算

面積計算書						工区	3	ブロック	31	計算者	精算者	備考	1. 豊成 477	2. 豊成 478
点	①	②	③	④	⑤	⑥	③ × ⑤		② × ⑥					
	X	X-(定数)	X _{n-1} -X _{n+1}	Y	Y-(定数)	Y _{n-1} -Y _{n+1}	+	-	+	-				
1	-152,545.321	-152.540 -45.321	+32.839	-37,251.777	-37.250 -1.777	+4.326		57.304708		196.058646				
2	-152,574.068	-77.068	+21.982	-37,258.353	-8.353	+36.125		783.615646		2675.706570				
25	-152,567.303	-67.303	-38.431	-37,287.897	-37.897	+22.298	1,456.419607			1,570.722294				
23	-152,535.637	-35.637	-25.574	-37,280.651	-30.651	-33.870	783.868674		1,207.025190					
24	-152,541.729	-41.729	+9.684	-37,254.027	-4.027	-28.879		38.997468	1,205.091791					
							2,240.288281	279.919822	2,412.116781	4,372.487440				
							1,960.370457			1,960.370457				
								$\frac{1}{2} = 980.18$						
2	-152,574.068	-152.550 -24.068	+35.998	-37,258.353	-37.200 58.353	-25.040		2,100.591294	602.662720					
3	-152,602.826	-52.826	+29.134	-37,264.935	64.935	+7.181		1,891.816290		377.343576				
4	-152,603.202	-53.202	-6.747	-37,265.534	65.534	+31.716	447.157898			1,687.354682				
6	-152,596.079	-46.079	-36.374	-37,296.651	96.651	+24.441	3,515.583474			1,126.216839				
26	-152,566.828	-16.828	-22.011	-37,289.975	89.975	-38.298	1,980.439725		644.478744					
							6,938.181077	3,992.407584	7,247.141464	3,192.914977				
							1,945.773513			1,945.773513				
								$\frac{1}{2} = 9728867565$						

面積計算書		工区	3	ブロック	31	計測者	精算者	備考	豊成 485-3 木保 3~31~2
点	①	②	③	④	⑤	⑥	③ × ⑤	② × ⑥	
	X	X-(定数)	X _{n-1} -X _{n+1}	Y	Y-(定数)	Y _{n-1} -Y _{n+1}	+ -	+ -	
		-152.500			-37.200				
6	-152.596.079	96.079	+ 24.873	-37.296.651	96.651	+ 25.806		2404.000323	
7	-152.591.701	91.701	- 33.627	-37.315.781	115.781	+ 12.434	3893.367687	1140.210234	
29	-152.562.452	62.452	- 24.873	-37.309.085	109.085	- 25.806	2713.271205	1611.626312	
26	-152.566.828	66.828	+ 33.627	-37.289.975	89.975	- 17.434		3025.589325	
							6606.638892	5429.589648	
							2442.575664	3619.624908	
							1177.049244	1177.049244	
							1/2 = 528.524622		
		-152.500			-37.300				
7	-152.591.701	91.701	+ 23.319	-37.315.781	15.781	+ 32.599		367.997139	
8	-152.585.771	85.771	- 35.180	-37.341.684	41.684	+ 19.208	1466.243120	1547.489368	
32	-152.556.521	56.521	- 23.319	-37.334.989	34.989	- 32.599	815.908491	1842.528079	
29	-152.562.452	62.452	- 35.180	-37.309.085	9.085	- 19.208		319.610300	
							2282.351611	687.607439	
							3042.106095	4636.850267	
							1594.744172	1594.744172	
							1/2 = 797.372086		

面積計算書		工区	ウ	ブロック	31	計算者	精算者	備考	5. 豊成 485-1 31 6. 保 345-1			
点	①	②	③	④	⑤	⑥	③	×	⑤	②	×	⑥
	X	X-(定数)	X _{n-1} -X _{n+1}	Y	Y-(定数)	Y _{n-1} -Y _{n+1}	+		-	+		-
32	-152.558.562	-152500 +6.563	+37.090	-37.334.805	-37300 34.805	-27.545				1290.917450		1558.027825
8	-152.585.771	85.771	+22.952	-37.361.686	41.684	+34.211				956.731168		2934.311681
9	-152.579.515	79.515	-6.793	-37.369.076	69.016	+27.757				468.825688		2207.097855
11	-152.578.978	78.978	-30.834	-37.369.601	69.441	+0.213				541.43794		16.822314
12	-152.548.681	48.681	-22.415	-37.369.229	69.229	-34.636				551.768025		168.115116
										4161.737517		2247.648618
										1914.088899		1914.088899
										1/2 = 957.0444495		
35	-152.542.795	-152500 +9.856	+9.856	-37.359.661	-37350 9.661	-7.759				95.218816		332.046405
24	-152.550.470	50.470	+5.886	-37.361.414	11.414	+9.568				67.182804		482.896960
12	-152.548.681	48.681	-9.856	-37.369.229	19.229	+7.759				189.521029		377.715879
13	-152.540.614	40.614	-5.886	-37.369.173	19.173	-9.568				112.852278		388.594722
										302.373302		162.401620
										720.641157		260.612839
										139.971682		139.971682
										1/2 = 69.985841		

面積計算書		工区	3	ブロック	31 31	計算者	精算者	備考	豊成 425-1	
点	①	②	③	④	⑤	⑥	③ ×	⑤	② ×	⑥
	X	X-(定数)	X _{n-1} -X _{n+1}	Y	Y-(定数)	Y _{n-1} -Y _{n+1}	+	-	+	-
8	-152,585.771	-152.500 85.771	+22.994	-37,341.684	-37.300 41.684	+34.027		958.481.896		2918.529817
9	-152,579.515	-79.515	-6.792	-37,369.016	-69.016	+27.757	468.825.688			2207.097.855
11	-152,578.978	-78.978	-38.834	-37,369.441	-69.441	+0.213	2141.163.796			16.922.314
12	-152,548.681	-68.681	-22.457	-37,369.229	-69.229	-34.452	1554.575.653		1677.157.812	
32	-152,556.521	-56.521	+37.090	-37,334.989	-34.989	-27.545		1297.742.010	1656.870.965	
							4164.645.135	2256.223.906	3234.028.757	5142.449.986
							1908.421.229			1908.421.229
								$\frac{1}{2} = 954.2106145$		
							分筆後の座標なし			

面積計算書		工区	3	ブロック	# 31	計算者	精算者	備考	7. 青江 851-18	8. 豊成 359-12	359-13
点	①	②	③	④	⑤	⑥	③ × ⑤		② × ⑥		
	X	X-(定数)	X _{n-1} -X _{n+1}	Y	Y-(定数)	Y _{n-1} -Y _{n+1}	+	-	+	-	
36	-152,533.758	^{-152,500} 33.758	+ 11.677	-37,357.596	^{-37,350} 7.596	- 9.446		88.698492	318.878068		
35	-152,542.795	42.795	+ 6.856	-37,359.661	9.661	+ 11.577		66.235816		495.437715	
13	-152,540.614	40.614	- 11.677	-37,369.173	19.173	+ 9.446	223.883/21			383.639844	
14	-152,531.118	31.118	- 6.856	-37,369.107	19.107	- 11.577	130.997592		360.253086		
							354.880713	154.934308	679.131154	879.077559	
							199.946405			199.946405	
									$\frac{1}{2} = 99.9732025$		
17	-152,518.816	^{-152,500} 18.816	+ 77.661	-37,354.183	^{-37,350} 4.183	- 8.476		73.875963	159.484416		
36	-152,533.758	33.758	+ 12.302	-37,357.596	7.596	+ 14.924		93.445992		503.804392	
14	-152,531.118	31.118	- 15.330	-37,369.107	19.107	+ 11.422	292.910310			355.429796	
15	-152,518.428	18.428	- 15.021	-37,369.018	19.018	- 3.035	285.669378		55.928980		
16	-152,516.077	16.077	+ 0.888	-37,366.072	16.072	- 14.835		6.235906	238.798775		
							578.579688	173.557891	454.212391	859.234188	
							405.021797			405.021797	
									$\frac{1}{2} = 202.5108985$		

面積計算書

工区 3 ブロック 3/ 計算者 精算者 備考 豊成 359-13
 ,, 359-12

点	①	②	③	④	⑤	⑥	③ × ⑤		② × ⑥	
	X	X-(定数)	X _{n-1} -X _{n+1}	Y	Y-(定数)	Y _{n-1} -Y _{n+1}	+	-	+	-
16	⁻¹⁵² 516.097	^{-152.500} 16.097	+ 0.388	⁻³⁷ 366.072	^{-37.350} 16.072	- 14.835			6.235936	238.798995
17	518.816	18.816	+ 6.882	354.183	4.183	- 10.938			28.787406	205.809408
37	522.979	22.979	+ 0.991	355.134	5.134	+ 14.845			5.087794	341.123255
38	519.807	19.807	- 4.551	369.028	19.028	+ 13.884				275.000388
15	518.428	18.428	- 3.710	369.018	19.018	- 2.956			70.556780	54.473168
									157.153208	40.111136
										499.081571
										616.123643
										117.042072
										117.042072
										1/2 = 58.521036
							変更後の資料なし			
36	⁻¹⁵² 533.758	^{-152.500} 33.758	+ 8.139	⁻³⁷ 357.596	^{-37.350} 7.596	+ 13.973			61.823844	471.700534
14	531.118	31.118	- 13.951	369.107	19.107	+ 11.432			266.561757	355.740976
38	519.807	19.807	- 8.139	369.028	19.028	- 13.973			154.868892	276.763211
37	522.979	22.979	+ 13.951	355.134	5.134	- 11.432			71.624434	262.695928
									421.430649	133.448278
										539.459139
										927.441510
										287.982371
							変更後の資料なし			
										287.982371
										1/2 = 143.9911855

面積計算書		工区	ウ	ブロック	31	計算者	精算者	備考	9. 青江 872-2 (1)		10. 青江 872-1 (1)	
点	①	②	③	④	⑤	⑥	③	×	⑤	②	×	⑥
	X	X-(定数)	X _{n-1} -X _{n+1}	Y	Y-(定数)	Y _{n-1} -Y _{n+1}	+		-	+		-
18	-152.522.475	-152.500 -22.475	+35.316	-37.338.189	-37.300 -38.189	-9.760				1348.682724		196.881000
33	-152.554.132	-54.132	+27.995	-37.365.423	-45.423	+23.225				1271.616885		1257.215700
34	-152.550.670	-50.470	-35.316	-37.361.610	-61.414	+8.760	2168.896824					442.117200
17	-152.548.816	-18.816	-27.995	-37.354.183	-54.183	-23.225	1516.853085					437.001600
							3685.749909	2620.299609		633.882600	1699.332900	
							1065.450300					1065.450300
							分筆後の座標なし					
										1/2 = 532.72		
19	-152.526.134	-152.500 -26.134	+35.318	-37.322.195	-37.300 -22.195	-8.757				783.893010		228.855438
31	-152.557.712	-57.712	+27.998	-37.329.632	-29.432	+23.228				824.037136		1342.415804
33	-152.554.132	-54.132	-35.318	-37.365.423	-45.423	+8.757	1604.249514					474.033924
18	-152.522.475	-22.475	-27.998	-37.338.189	-38.189	-23.228	1069.215622					522.049300
							2673.465136	1607.920146		780.904738	1816.449728	
							1065.544990					1065.544990
										1/2 = 532.71		

面積計算書						工区	ウ	ブロック	番 31	計算者	精算者	備考
	①	②	③	④	⑤	⑥	③ × ⑤	② × ⑥	11. 青江 871-101 12. 未指定地保) 3-31~3			
点	X	X-(定数)	X _{n-1} -X _{n+1}	Y	Y-(定数)	Y _{n-1} -Y _{n+1}	+	-	+	-		
20'	-152.529.792	-152.500 29.792	+ 35.321	-37.306.201	-37300 6.201	- 8.755		219.025.521		260.828.960		
30'	-152.561.655	61.055	+ 28.001	-37.313.660	13.440	+ 23.231		376.333.440		1427.661.105		
31'	-152.557.793	57.793	- 35.321	-37.329.632	29.432	+ 8.755	1039.567.672			505.977.715		
1A'	-152.526.134	26.134	+ 28.001	-37.322.195	22.195	- 23.231	621.482.195			607.118.954		
							1661.049867	595.258.961	867.947.914	1933.638.820		
							1065.690.906			1065.690.906		
										1/2 = 532.845.453		
21'	-152.532.425	-152.500 32.425	+ 34.296	-37.294.692	-37200 94.692	- 4.262		3247.558.332		138.195.350		
28'	-152.544.088	64.088	+ 29.030	-37.301.939	101.939	+ 18.748		2959.289.170		1201.521.824		
30'	-152.561.655	61.455	- 34.296	-37.313.660	113.440	+ 4.262	3890.538.280			261.921.210		
20'	-152.529.792	29.792	- 29.030	-37.306.201	106.201	- 18.748	3083.015.030			558.540.416		
							6973.553.270	6206.846.002	696.725.766	1463.443.014		
							766.707.268			766.707.268		
										1/2 = 383.353.634		

面積計算書						工区	ブロック	計測者	精算者	備考
						3	31			13.青江877-1 14.青江877(1)
点	①	②	③	④	⑤	⑥	③ × ⑤		② × ⑥	
	X	X-(定数)	X _{n-1} -X _{n+1}	Y	Y-(定数)	Y _{n-1} -Y _{n+1}	+	-	+	-
22	-152.533.540	-152.500 33.540	+32.780	-37.289.817	-37200 89.817	+ 2.371	2944.201260			79.423240
27	-152.565.205	65.205	+30.548	-37.297.063	97.063	+ 12.122	2965.080524			790.415010
28	-152.564.088	64.088	-32.780	-37.301.939	101.939	- 2.371	3241.560420			151.952648
21	-152.582.425	32.425	-30.548	-37.296.642	94.6927	12.122	2892.651216			393.055850
							6234.211636	+909281784	545.608498	869.938350
							324.929852			324.929852
								1/2 =	162.464926	
23	-152.535.637	-152.500 35.637	+33.763	-37.280.651	-37200 80.651	- 1.920	2723.019713			68.423040
25	-152.567.303	67.303	+29.568	-37.287.897	87.897	+ 16.412	2598.938496			1104.576836
27	-152.565.205	65.205	-33.763	-37.297.063	97.063	+ 1.920	3277.138069			125.193600
22	-152.533.540	33.540	-29.568	-37.289.817	89.817	- 16.412	2655.709056			150.458480
							1932.847125	+321.958209	618.881520	1229.720436
							610.888916			610.888916
								1/2 =	305.444458	

面積計算書						工区	ウ	ブロック	31 31	計算者	精算者	備考	鴨切. 2, 3, 4.
点	① X	② X-(定数)	③ X _{n-1} -X _{n+1}	④ Y	⑤ Y-(定数)	⑥ Y _{n-1} -Y _{n+1}	③ +	⑤ -	② +	⑥ -			
3	-152.602.826	-152.600 - 2.826	+ 0.669	37.264.935	-37.250 - 14.935	- 2.924		9.991515	8.263224				
II	-152.605.750	- 5.750	+ 2.255	37.265.605	- 15.605	+ 3.594		35.189275		20.665500			
5	-152.605.081	- 5.081	- 2.924	37.268.529	- 18.529	- 0.670	54.178796		3.404270				
							54.178796	45.130790	11.667494	20.665500			
							8.998006			8.998006			
								1/2 = 4.49					
10	-152.582.647	-152.550 - 32.647	+ 3.000	37.366.528	-37.350 - 16.538	+ 0.021		49.614000		0.685587			
III	-152.581.978	- 31.978	- 3.669	37.369.662	- 19.462	+ 2.903	71.406078			92.832134			
11	-152.578.978	- 28.978	+ 0.669	37.369.441	- 19.441	- 2.924		13.006029	84.731672				
							71.406078	62.620029	84.731672	93.577721			
							8.786049			8.786049			
								1/2 = 4.39					
15	-152.548.428	-152.510 - 8.428	- 0.669	37.369.018	-37.360 - 9.018	+ 2.925	6.033042			24.651900			
IV	-152.545.427	- 5.427	- 2.332	37.368.997	- 8.997	- 2.946	20.981004		15.987942				
16	-152.546.096	- 6.096	+ 3.001	37.366.072	- 6.072	+ 0.021		18.222072		0.128016			
							27.014046	18.222072	15.987942	24.779916			
							8.791974			8.791974			

面積計算書		工区	ブロック	31	計算者	精算者	備考	水路	
		ウ						橋切 1	
点	①	②	③	④	⑤	⑥	③ × ⑤	② × ⑥	
	X	X-(定数)	X _{n-1} -X _{n+1}	Y	Y-(定数)	Y _{n-1} -Y _{n+1}	+	-	
4.	-152.603.202	-152.500 103.202	+ 25.566	-37.265.536	-37200 65.534	- 100.487		1675.442244	10370.459374
5	-152.605.081	105.081	- 20.555	-37.268.529	68.529	+ 101.004	1408.613895		10613.601324
10.	-152.582.667	82.647	- 25.566	-37.366.538	166.538	+ 100.027	4257.710508		824.949089
P	-152.579.515	79.515	+ 20.555	-37.369.016	169.016	+ 101.004		3474.123880	2031.333060
							5666.324102	5149.566124	12401.992434
							516.757979		516.757979
									1/2 = 258.3789895
I	-152.542.397	-152.500 42.397	+ 3.593	-37.251.103	-37200 51.103	- 2.255		183.613079	95.605235
1	-152.545.321	45.321	- 0.669	-37.251.772	51.772	+ 2.924	34.625468		132.518604
24	-152.541.728	41.728	- 2.924	-37.254.027	54.027	- 0.669	157.974948		27.916032
							192.610416	183.613079	123.521267
							8.997337		132.518604
									8.997337
									1/2 = 4.4986685

計年
月
算日

計
算
者



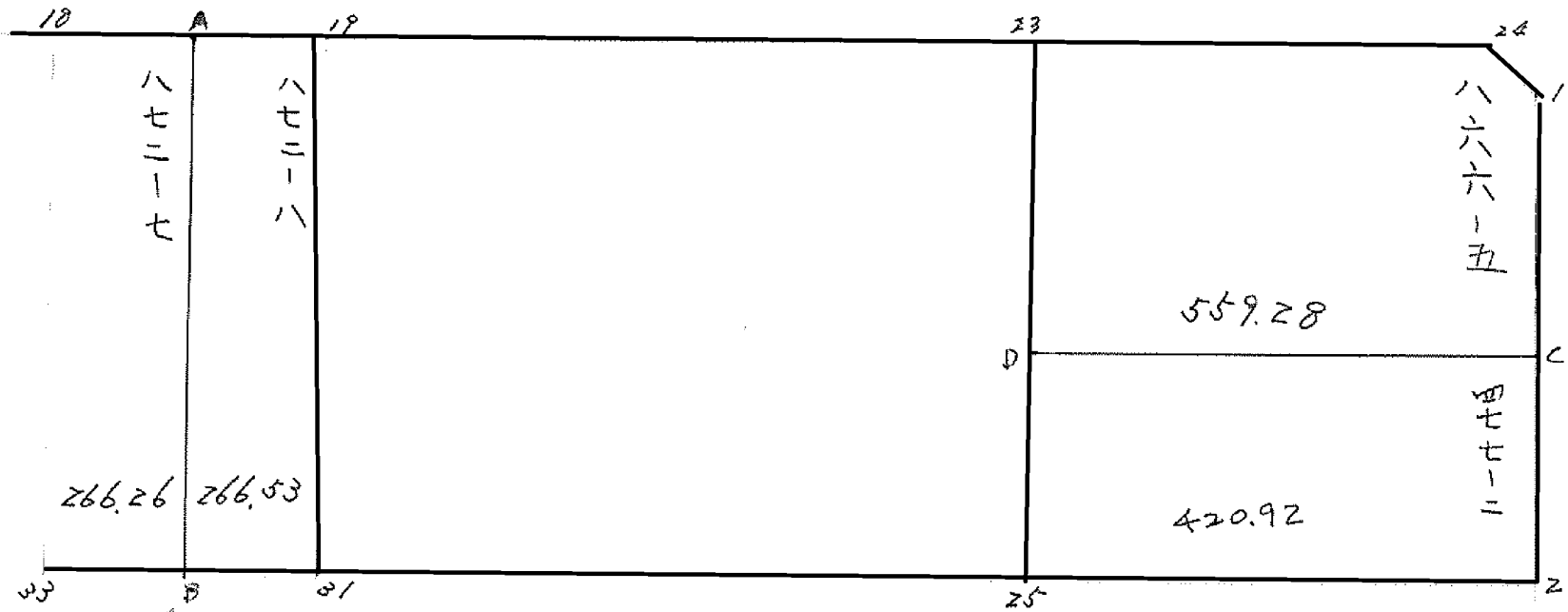
檢
查
者



B.NO. 31

各筆面積計算書

地番	算式	隅切	地積	摘要
	豊成 477		980.18	
	豊成 478		972.88	
	豊成 485の3		588.52	
	米(俵) 3~31~2		797.37	
	豊成 485の1		954.21	
	保 3- 45 ³¹ -1		69.98	✓
	青江 851の18		99.97	
	豊成 359の42 } 359a12		143.99	
	359の13 } 359a13		202.51	
			58.52	
	青江 872の2 (Ⅳ)		532.72	
	青江 872の1 (Ⅳ)		532.77	
	青江 871の1 (Ⅳ)		532.84	
	米(俵) 3~31~3		383.35	
	青江 877の1		162.46	
	青江 877 冊八		305.44	
	水路		258.37	
	計		7.373.57	
	全体		7.373.66	
		差	-0.09	
	換地		5,864.50	
	保留地		5,303.59	
	米		69.98	250.15
			1,180.72	
	水路		258.37	



面積計算書

工
区

3

フ
ロ
ン
ク

31

計
算
者

精
算
者

備
考

青 872-8

点	①	②	③	④	⑤	⑥	③	×	⑤	②	×	⑥
	X	X - (定数)	X _{n-1} - X _n	Y	Y - (定数)	Y _{n-1} - Y _n	+		-	+		-
A	152 524.304	152.520 4.304	-29.828	31 330.196	37.320 10.196							
19	526.134	6.134	+33.489	322.195	2.195		93.508755					
31	557.793	37.793	+29.828	329.432	9.432		231.337696					
B	555.962	35.962	-33.489	337.432	17.432				533.180268			
							354.84605		387.906576			
									533.060485			
							1/2 = 266.53					

面積計算書

工区

3

ブロック

31

計算者

精算者

備考

青 866-5

点	①	②	③	④	⑤	⑥	③ × ⑤		② × ⑥	
	X	X - (定数)	X _{n-1} - X _n	Y	Y - (定数)	Y _{n-1} - Y _n	+	-	+	-
23	⁻¹⁵² 535.637	^{-152 530} 5.637	-12.040	⁻³⁷ 280.651	^{-37.250} 30.651				369.038040	
24	541.728	11.728	+9.684	254.027	4.027		38.997468			
1	545.321	15.321	+18.800	251.772	1.772		33.313600			
2	560.528	30.528	+8.447	255.253	5.253		44.372091			
3	553.768	23.768	-24.891	284.800	34.800			866.206800		
							116.683159	1295.244840		
								118.561681		
							1/2 = 559.28			

