

BLOCK NO. 53

街 区 計 算

街区略図

工区

3

ブロック

53

記入者

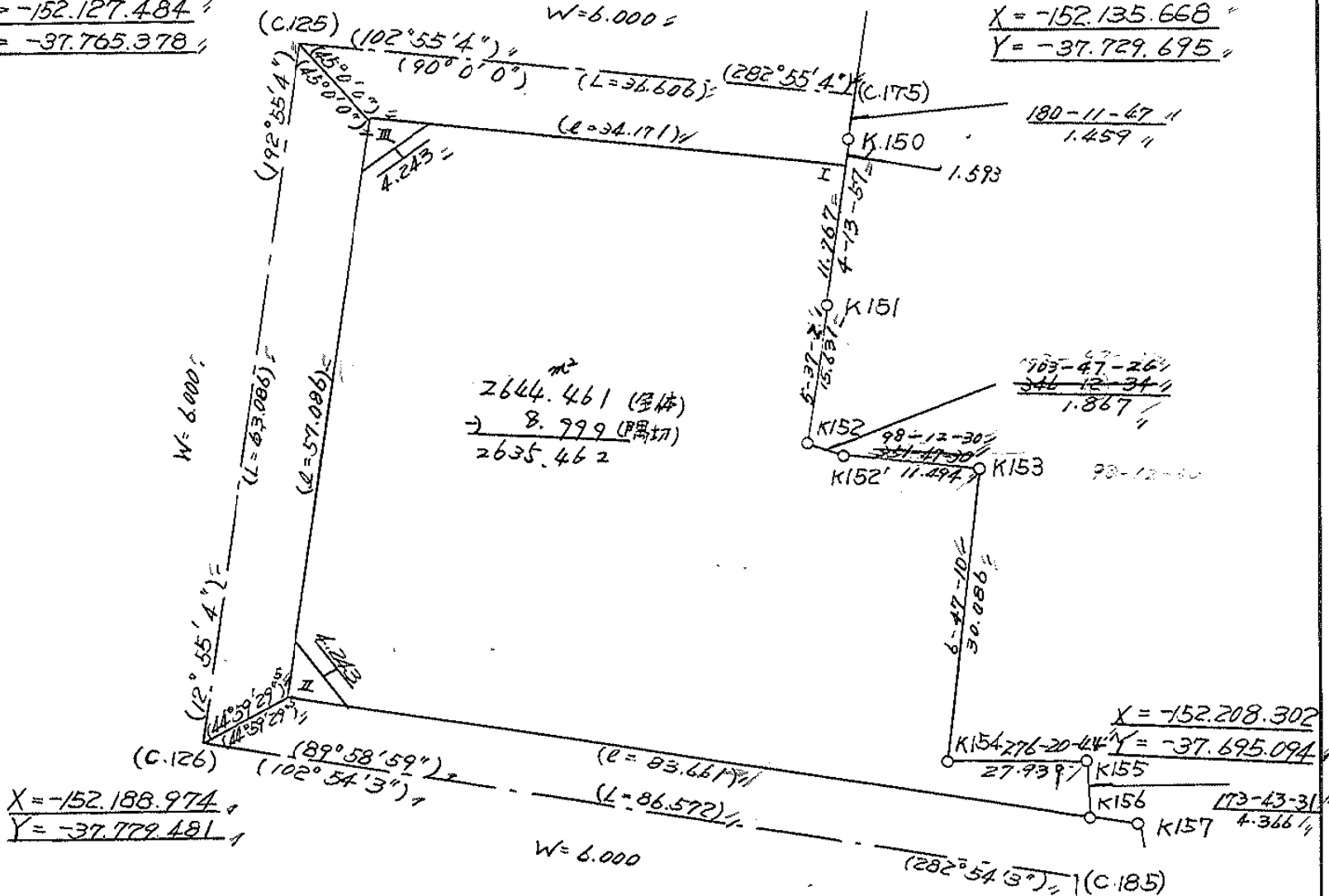


点検者



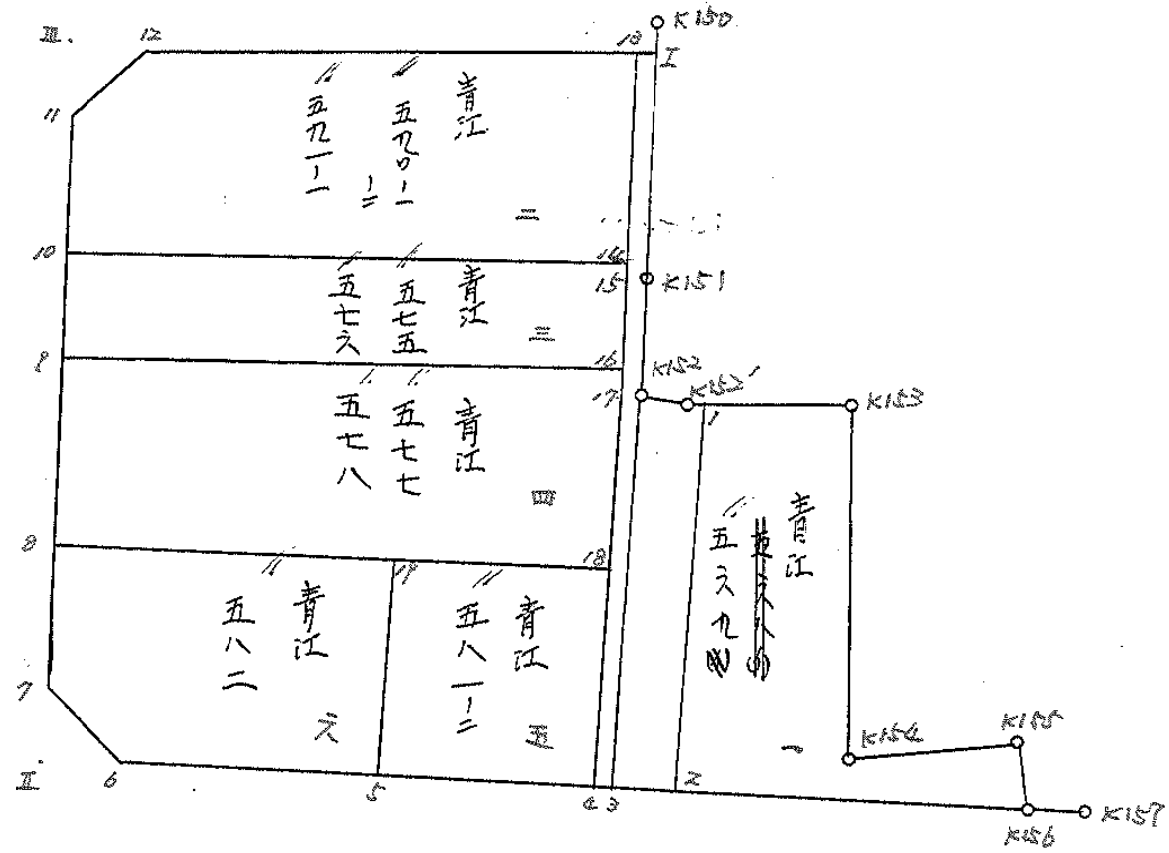
$X = -152.127.484$
 $Y = -37.765.378$

$X = -152.135.668$
 $Y = -37.729.695$



面地計算

BN053



面積計算書		工区	ブロック	53	計算者	精算者	備考
点	①	②	③	④	⑤	⑥	③ × ⑤
	X	X-(定数)	X _{n-1} -X _{n+1}	Y	Y-(定数)	Y _{n-1} -Y _{n+1}	② × ⑥
							+ -
1	-152 166.545	-152.160 6.545	-27.651	729.774	-37.690 39.774	-17.453	1099.790874
K153	168.095	8.095	+31.425	719.027	29.027	-7.188	912.173475
K154	197.970	37.970	+32.963	722.586	32.586	-24.213	1076.192318
K155	201.058	41.058	+7.428	694.814	4.814	-28.249	35.758392
K156	205.398	45.398	-5.312	694.337	4.337	+41.666	23.038144
2	195.746	35.746	-38.853	736.480	46.480	+35.437	1805.887460
							2928.716458
							2022.064185
							2251.631797
							3158.286070
							906.652273
							× 1/2 = 453.3261365
13	-152 138.492	-152.150 8.492	+18.067	730.804	-37.730 0.804	-28.560	14.509788
14	149.797	19.797	+3.545	731.640	1.640	+36.833	5.813800
10	142.037	12.037	-15.794	765.637	35.637	+32.155	562.850778
11	134.003	4.003	-10.287	763.795	33.795	-5.437	347.649165
12	131.750	1.750	+4.489	760.200	30.200	-32.991	135.549800
							57.734250
							910.499943
							155.891388
							322.030081
							1076.638636
							754.608555
							754.608555
							× 1/2 = 377.3042775

分筆後の座標なし

面積計算書		工区	ブロック	計算者	精算者	備考				
						5. 青江 581-2 6. 青江 582				
点	①	②	③	④	⑤	⑥	③ × ⑤	② × ⑥		
	X	X-(定数)	X _{n-1} -X _{n+1}	Y	Y-(定数)	Y _{n-1} -Y _{n+1}	+	-	+	-
18	⁻¹⁵² 177.432	^{-152,170} 7.432	+ 20.662	⁻³⁷ 735.865	^{-37,730} 5.865	- 9.626		121.182630	71.540432	
4	194.964	24.964	+ 14.404	739.891	9.891	+ 17.683		142.469964		441.438412
5	191.836	21.836	- 20.662	753.548	23.548	+ 9.626	486.548776			210.193336
19	174.302	4.302	- 14.404	749.517	19.517	- 17.683	281.122868		76.072266	
							767.671644	263.652594	147.612698	651.631748
							504.019050			504.019050
								1/2 252.009525		
19	⁻¹⁵² 174.302	^{-152,160} 14.302	+ 22.658	⁻³⁷ 749.517	^{-37,740} 9.517	- 18.314		215.636186	261.926828	
5	191.836	31.836	+ 13.088	753.548	13.548	+ 23.445		177.316224		746.395020
6	187.390	27.390	- 8.040	772.962	32.962	+ 21.667	225.014480			593.459130
7	183.796	23.796	- 18.212	775.215	35.215	- 1.100	641.335580		26.175600	
8	169.178	7.178	- 9.494	771.862	31.862	- 25.698	302.497828		235.856244	
							1202.847888	392.952410	523.958672	1339.854150
							815.895478			815.895478
								1/2 407.947739		

面積計算書		工区	地	ブロック	53	計算者	精算者	備考	3. 青江 575 676	4. 青江 577
点	①	②	③	④	⑤	⑥	③	⑤	②	⑥
	X	X-(定数)	X _{n-1} -X _{n+1}	Y	Y-(定数)	Y _{n-1} -Y _{n+1}	+	-	+	-
14	-152 149.7974	-152,140 9.7974	+ 0.3304	-37 731.6404	-37,730 1.6404	-33.9454			13.661200	332.657135
15	150.3674	10.3674	+ 13.0064	731.6824	1.6824	+ 1.2664			21.876092	13.124622
16	162.8034	22.8034	+ 4.3044	732.9064	2.9064	+ 36.8434			12.507424	840.358959
9	154.6714	14.6714	- 20.7664	768.5354	38.5354	+ 32.7314			800.217810	480.196501
10	142.0374	2.0374	- 4.8744	765.6374	35.6374	- 36.8954			173.694738	25.155115
									972.912148	40.044716
									407.812250	1322.680082
									925.867832	925.867832
									1/2 = 462.933916	
16	-152 162.8034	-152,150 12.8034	+ 11.1764	-37 732.9064	-37,730 2.9064	-35.3304			32.477656	452.329990
17	165.8474	15.8474	+ 14.6294	733.2054	3.2054	+ 2.9494			46.885945	46.891273
18	177.4324	27.4324	+ 3.3314	735.8654	5.8654	+ 38.6474			19.136315	1060.638824
8	169.1784	19.1784	- 22.7614	771.8624	41.8624	+ 32.6704			952.820982	626.545260
9	154.6714	4.6714	- 6.3754	768.5354	38.5354	- 38.9464			245.660625	181.963476
									1198.481607	98.899716
									634.293466	1733.875357
									1099.581891	1099.581891
									1/2 = 549.790945	

面積計算書		工区	ウ	ブロック	53	計算者	精算者	備考	水路 泥上げ	
点	① X	② X-(定数)	③ X _{n-1} -X _{n+1}	④ Y	⑤ Y-(定数)	⑥ Y _{n-1} -Y _{n+1}	③ +	⑤ -	② +	⑥ -
1	-152 166.545	-152,160 6.545	+29.222 729.774	37 9.774	-37,720 9.774	+6.077			286.300008	39.773965
2	195.746	35.746	+28.642 736.480	16.480	16.480	+9.143			472.020160	326.825678
3	195.187	35.187	-29.737 738.917	18.917	18.917	-4.264	562.534829		150.037368	
K152	166.009	6.009	-28.733 732.216	12.216	12.216	-8.514	1351.002328		51.160626	
K152'	166.656	6.456	+0.436 730.403	10.403	10.403	-2.442			5.576008	15.760668
							913.537157	763.896176	216.958662	366.599643
							149.640981			149.640981
								1/2=74.82		
I	-152 138.718	-152,130 8.718	+11.961 729.818	37 9.818	-37,720 9.818	-0.118			117.433098	1.028724
K151	150.453	20.453	+27.291 730.686	10.686	10.686	+2.398			291.631626	49.046294
K152	166.009	6.009	+44.734 732.216	12.216	12.216	+8.231			546.470544	296.390079
3	195.187	35.187	+28.954 738.917	18.917	18.917	+7.675			547.741735	500.310225
4	194.964	64.964	-29.340 739.891	19.891	19.891	-5.712	583.601940		371.074368	
17	165.847	35.847	-44.597 733.205	13.205	13.205	-8.209	588.903385		294.268023	
15	150.367	20.367	-27.355 731.682	11.682	11.682	-2.401	1319.561110		48.901167	
13	138.692	8.692	-11.649 730.804	10.804	10.804	-1.864	125.855796		15.829088	
							1617.922231	1503.277003	731.101370	845.746598
							114.645228			114.645228
								1/2=57.32		

面積計算書		工区	ブロック	計算者	精算者	備考	隅切Ⅱ,Ⅲ			
点	①	②	③	④	⑤	⑥	③ × ⑤	② × ⑥		
	X	X-(定数)	X _{n-1} -X _{n-1}	Y	Y-(定数)	Y _{n-1} -Y _{n-1}	+	-	+	-
6	-152 187.390"	-152, 180 7.390"	-37 + 2.924"	772.962"	-37, 770" 2.962" + 0.671"			8.660988"		4.958690"
II	186.720"	6.720"	-3.594"	775.886"	5.886" + 2.253"	21.154284"				15.160160"
7	183.796"	3.796" + 0.670"		775.215"	5.215" - 2.924"			3.494050"	11.099504"	
						21.154284"		12.154938"	11.099504"	40.098850"
						8.999346"				8.999346"
								V ₂ = 4.499673"		
11	-152 134.503"	-152, 130 4.003"	-37 - 0.671"	763.795"	-37, 760" 3.795" + 2.924"	2.546445"				11.704772"
III	131.079"	1.079"	-2.253"	763.124"	3.124" - 3.595"	7.028372"			3.879005"	
12	131.750"	1.750" + 2.924"		760.200"	0.200" + 0.671"			0.584800"		1.174250"
						9.584813"		0.584800"	3.879005"	12.879022"
						9.000017"				9.000017"
								V ₂ = 4.5000085"		

計年月日

計算者



検査者



B.NO. 53

各筆面積計算書

地番	算式	隅切	地積	摘要
	青江569		453.32	〃
	青江58102		252.00	〃
	青江582		407.94	〃
	青江577, 578		549.79	〃
	青江575, 576		462.93	〃
	青江59001, 59002, 59101		377.30	〃
	管理道		57.32	〃
	水路		74.82	〃
	計		2,635.42	〃
	全体		2,635.48	〃
		差	-0.06	〃
	換地		2,503.28	〃
	管理道		57.32	〃
	水路		74.82	〃