

BLOCK NO. 40

街 区 計 算

街区略図

工区

3

ブロック

~~76~~ 40

記入者



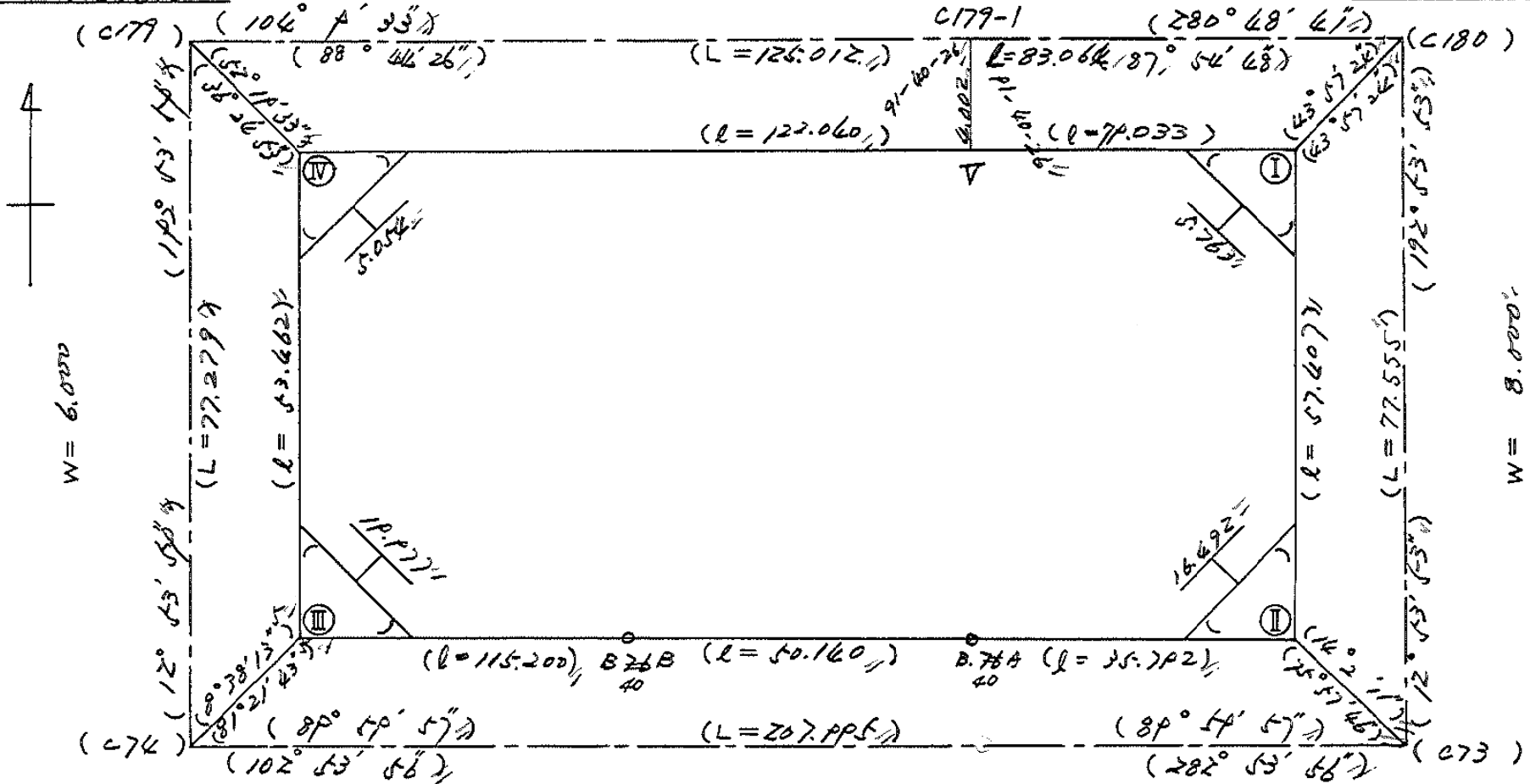
点検者



X = -152.277.830 /
Y = -37.673.688 /

W = 8.000 /
X = -152.308.610 /
Y = -37.552.674 /

X = -152.323.991 /
Y = -37.670.884 /



X = -152.350.154 /
Y = -37.690.941 /

W = 39.500 /

W =

W = 32.000 /

X = -152.399.589 /
Y = -37.688.196 /

面積計算書

工区

3

ブロック

~~74~~ 40

計算者



精算者



備考

全体

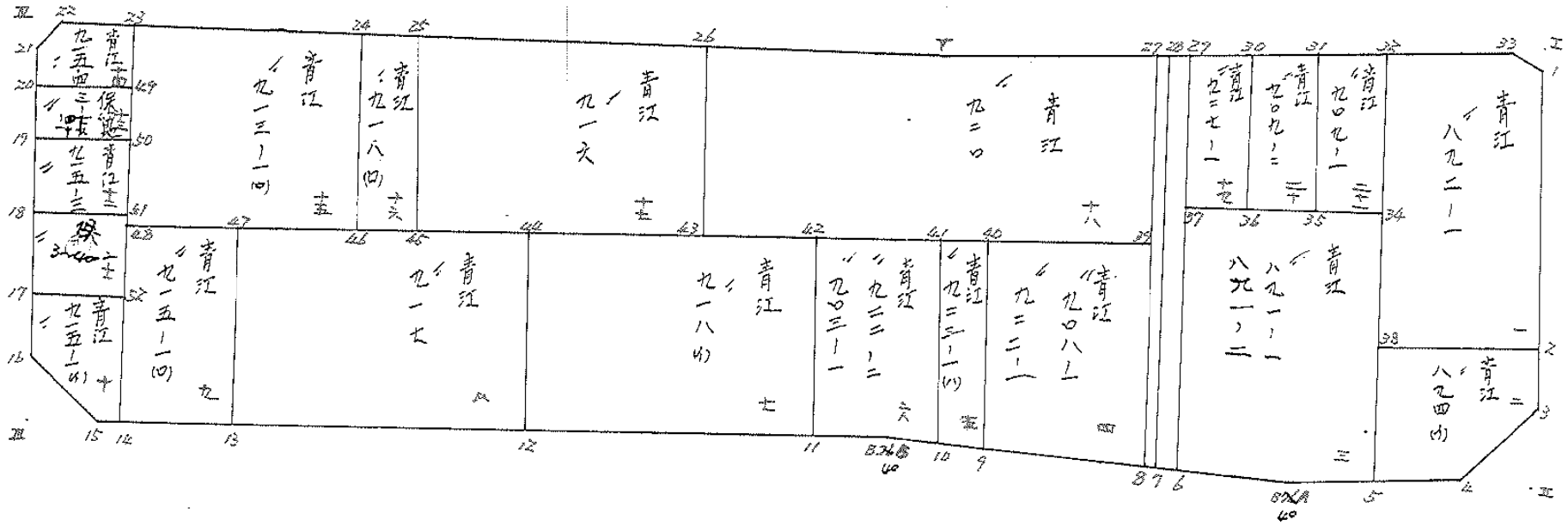
点	①	②	③	④	⑤	⑥	③ × ⑤		② × ⑥	
	X	X - (定数)	X _{n-1} - X _{n+1}	Y	Y - (定数)	Y _{n-1} - Y _{n+1}	+	-	+	-
I	-152.327.142	-152.200 -127.142	+ 70.783	-37.475.709	-37.400 -75.709	- 64.815			5358.91047	8240.708730
II	-152.383.100	-183.100	+ 47.968	-37.688.524	-88.524	+ 47.704			4246.319232	8734.602400
⁴⁰ B 7A	-152.575.110	-175.110	- 22.807	-37.523.413	-123.413	+ 82.790	2214.680291			14497.356900
⁴⁰ B 7B	-152.360.293	-160.293	- 40.533	-37.571.314	-171.314	+ 160.194	6943.870362			25677.976947
III	-152.336.577	-134.577	- 77.829	-37.683.607	-283.607	+ 100.358	22072.849203			13505.878566
IV	-152.282.664	- 82.664	- 22.260	-37.671.672	-271.672	- 130.268	6047.418720			10742.420352
V	-152.312.317	-112.317	+ 44.678	-37.553.339	-153.339	- 195.963			6210.879842	22009.976291
							37828.818576	16456.109221	40993.105353	62418.814708
							21022.709355			21422.709355
										$\frac{1}{2} = 10711.3546775$
										$\frac{m_2}{I} = 10,711.35 - (4.50 + 38.28 + 38.28 + 4.50) = 10,625.79$

面地計算

三工区

B.No

~~78~~ 40



14枚

面積計算書		工区	ω	ブロック	9640	計算者	精算者	備考	1.青江892-1 2.青江894(4)	
点	①	②	③	④	⑤	⑥	③ × ⑤	② × ⑥		
	X	X-(定数)	X _{n-1} -X _{n+1}	Y	Y-(定数)	Y _{n-1} -Y _{n+1}	+	-		
1	-152.330.066	-152.320 10.066	+ 39.889	-37.476.379	6.379	+ 6.059	254.451931	60.989894		
2	-152.366.468	46.468	+ 31.692	-37.484.715	14.715	+ 28.949	466.347780	1345.202132		
38	-152.361.258	41.758	- 43.292	-37.505.328	35.328	+ 11.761	1529.419776	491.115838		
32	-152.323.176	3.176	- 35.179	-37.496.476	26.476	- 26.672	931.399204	84.710272		
33	-152.326.579	6.579	+ 6.890	-37.478.656	8.656	- 20.097	59.639840	132.218163		
							2460.818980	780.439551	216.928435	1879.307864
							1680.379429		1680.379429	
								1/2 = 840.18		
2	-152.366.468	-152.360 6.468	+ 12.813	-37.484.715	4.715	- 18.757	60.413295	121.320276		
3	-152.374.571	14.571	+ 14.679	-37.486.571	6.571	+ 12.338	96.455709	179.776998		
4	-152.381.147	21.147	+ 3.807	-37.497.053	17.053	+ 22.570	64.920771	477.287790		
5	-152.378.378	18.378	- 19.389	-37.509.141	29.141	+ 8.275	565.014849	152.077950		
38	-152.361.258	1.758	- 11.910	-37.505.328	25.328	- 24.426	301.656480	42.940908		
							866.671329	221.789775	164.261184	809.142738
							644.881554		644.881554	
								1/2 = 322.44		

面積計算書		工区	ブロック	7640	計算者	精算者	備考	江. 891-1 4. 青江 908-1 922-1			
点	①	②	③	④	⑤	⑥	③ ×	⑤	② ×	⑥	
	X	X-(定数)	X _{n-1} -X _{n+1}	Y	Y-(定数)	Y _{n-1} -Y _{n+1}	+	-	+	-	
24	-152.363.796	-152.300 43.796	+40.579	-37.501.207	-37.500 1.207	-18.278		48.978853	800.503288		
5	-152.378.378	78.378	+31.314	-37.509.161	9.141	+22.206		286.241274		1740.461868	
40 B/A	-152.375.110	75.110	-6.897	-37.523.613	23.413	+26.003	161.479461			1953.085330	
6	-152.371.681	71.481	-37.311	-37.535.166	35.144	+4.006	1311.251184			286.352886	
27	-152.337.799	37.799	-27.685	-37.527.419	27.419	-33.937	759.095015		1282.784663		
								2231.832263	35.220127	2083.287951	3979.900084
								1896.612133			1896.612133
								1/2 = 948.3060665			
2P	-152.361.620	-152.300 41.620	+33.634	-37.531.886	-37.500 31.886	-14.405		1072.453724	599.536100		
8	-152.370.666	70.444	+22.438	-37.538.498	38.498	+27.255		863.818124		1919.951220	
P	-152.366.058	64.058	-33.634	-37.559.161	59.141	+14.405	1989.48394			922.755490	
60	-152.336.810	36.810	-22.438	-37.552.403	52.903	-27.255	1187.037514		1003.256550		
								3176.185908	1936.271848	1602.792650	2842.706710
								1239.914060			1239.914060
								1/2 = 619.957030			

面積計算書		工区	ブロック	76 40	計算者	精算者	備考	5. 青江 923-101 922-2 6. 青江 923-1	
点	① X	② X-(定数)	③ X _{n-1} -X _{n+1}	④ Y	⑤ Y-(定数)	⑥ Y _{n-1} -Y _{n+1}	③ × ⑤ +	⑤ × ⑥ -	② × ⑥ +
40	152.336.810	-152.300 36.810	+28.631	-37.552.903	-37.500 52.903	+0.196	1514.665793		7.214760
9	152.364.058	64.058	+25.410	-37.559.161	59.141	+12.180	1502.772810		788.226440
10	152.362.220	62.220	-28.631	-37.565.083	65.083	-0.196	1863.391373		12.195120
41	152.335.427	35.427	-25.410	-37.559.965	58.945	-12.180	1497.792450		431.500860
							3361.183823	3017.438603	443.695980
									787.441209
							343.745220		343.745220
									$\frac{1}{2} = 171.872610$
41	152.335.427	-152.300 35.427	+30.451	-37.559.965	-37.500 58.945	-9.848	1794.934195		348.885096
10	152.362.220	62.220	+24.866	-37.565.083	65.083	+12.369	1618.353878		769.599180
8.7.8	152.360.293	60.293	-4.137	-37.571.314	71.314	+15.881	295.026018		957.513133
11	152.358.083	58.083	-28.524	-37.580.964	80.964	+3.617	2309.417136		210.086211
42	152.331.769	31.769	-22.656	-37.576.931	74.931	-22.019	1697.636736		699.521611
							4302.079890	3413.288073	1048.406707
									1937.198524
							888.791817		888.791817
									$\frac{1}{2} = 444.3959085$

面積計算書		工区	ブロック	計算者	精算者	備考	7. 青江 918 (1) 8. 青江 917			
点	① X	② X - (定数)	③ X _{n-1} - X _{n+1}	④ Y	⑤ Y - (定数)	⑥ Y _{n-1} - Y _{n+1}	③ × ⑤ +	⑤ × ⑥ -	② × ⑥ +	⑥ × ② -
42	-152.331.769	-152.300 31.769	+34.926	-37.574.931	-37.500 74.931	-31.595		2617.040106	1003.741555	
11	-152.358.083	58.083	+17.697	-37.580.964	80.964	+43.659		1432.819908		2535.845697
12	-152.349.466	49.466	-34.926	-37.618.590	118.590	+31.595	4141.874340			1562.878270
44	-152.333.157	23.157	-17.697	-37.612.559	112.559	-43.659	1991.956623		1011.011463	
							6133.830963	4049.860014	2014.753018	4098.723967
							2083.970949			2083.970949
							1/2	1041.9854745		
44	-152.323.157	-152.300 23.157	+35.032	-37.612.559	-37.600 12.559	-32.084		439.966888	742.969188	
12	-152.349.466	49.466	+17.581	-37.618.590	18.590	+44.145		326.830790		2183.676570
13	-152.340.738	40.738	-35.032	-37.656.702	56.704	+32.084	1986.454528			1307.037992
47	-152.316.434	14.434	-17.581	-37.650.676	50.674	-44.145	890.899594		637.188930	
							2877.354122	766.797678	1380.158118	3490.714562
							2110.556444			2110.556444
							1/2	1055.278222		

面積計算書						工区	ブロック	計算者	精算者	備考
										9.青江 915-14) 10.青江 915-14)
点	①	②	③	④	⑤	⑥	⑧ × ⑤	② × ⑥		
	X	X-(定数)	X _{n-1} -X _{n+1}	Y	Y-(定数)	Y _{n-1} -Y _{n+1}	+	-	+	-
47	-152.316.436	-152.300 14.434	+29.784	-37.650.676	-37.600 50.674	-9.178		1509.274416	132.475252	
13	-152.340.738	40.738	+22.821	-37.658.706	56.704	+21.236		1294.041984		865.112168
14	-152.337.255	37.255	-29.784	-37.671.910	71.910	+9.178	2141.767440			341.926390
48	-152.310.956	10.954	-22.821	-37.665.882	65.882	-21.236	1503.493122		232.619144	
								3645.260562	2803.316400	365.094396
								841.944162		841.944162
										1/2 = 420.972081
52	-152.320.315	-152.300 20.315	+19.610	-37.668.028	-37.600 68.028	-7.819		1334.029080	158.842985	
14	-152.337.255	37.255	+16.215	-37.671.910	71.910	+7.050		1166.020650		262.647750
15	-152.336.530	36.530	-11.207	-37.675.078	75.078	+9.744	841.399146			355.948320
16	-152.326.048	26.048	-18.885	-37.681.654	81.654	+4.651	1542.035790			121.149248
17	-152.317.645	17.645	-5.733	-37.679.729	79.729	-13.626	457.086357		240.430770	
								2840.521293	2500.049730	399.273755
								340.471563		739.745318
										340.471563
										1/2 = 170.2357815

面積計算書		工区	ウ	ブロック	7640	計算者	精算者	備考	11. 青江 (保) 3-40-2	12. 青江 915-3
点	①	②	③	④	⑤	⑥	③ × ⑤	② × ⑥		
	X	X-(定数)	X _{n-1} -X _{n+1}	Y	Y-(定数)	Y _{n-1} -Y _{n+1}	+	-	+	-
51	-152.309.808	-152.300 9.808	+13.181	-37.665.620	-37.600 65.620	-9.294		864.937220	91.155552	
52	-152.320.315	20.315	+7.837	-37.668.028	68.028	+14.109		533.135436		286.624335
17	-152.317.645	17.645	-13.181	-37.679.729	79.729	+9.294	1050.907949			163.992630
18	-152.307.134	7.134	-7.837	-37.677.322	77.322	-14.109	603.972514		100.653606	
							1656.880463	1398.072656	191.809158	450.616965
							258.807807			258.807807
							1/2 = 129.4039035		分筆後の座標なし	
50	-152.300.354	-152.200 100.354	+12.127	-37.663.653	-37.600 63.453	-9.537		769.494531	957.076098	
51	-152.309.808	109.808	+6.780	-37.665.620	65.620	+13.869		444.903600		1522.927152
18	-152.307.134	107.134	-12.127	-37.677.322	77.322	+9.537	937.683894			1021.736958
19	-152.297.681	97.681	-6.780	-37.675.157	75.157	-13.869	509.364460		1354.737789	
							1447.248354	214.398131	2311.813887	2544.664110
							232.850223			232.850223
							1/2 = 116.425115			

面積計算書

工区

ウ

ブロック

7640

計算者



精算者



備考

13. 保留地 3-~~76~~-1
14. 青江915-4

14-7

点	①	②	③	④	⑤	⑥	③ × ⑤		② × ⑥		
	X	X-(定数)	X _{n-1} -X _{n+1}	Y	Y-(定数)	Y _{n-1} -Y _{n+1}	+	-	+	-	
49	-152.295.480	-152.200 95.480	+7.546	-37.662.336	-37.600 62.336	-10.588		470.387456	1010.942240		
50	-152.200.384	100.354	+2.201	-37.663.653	63.453	+12.821		139.660053			1286.638634
1P	-152.297.681	97.681	-7.546	-37.675.157	75.157	+10.588	567.134722				1034.246428
2D	-152.292.808	92.808	-2.201	-37.676.061	74.041	-12.821	162.964241			1189.891368	
								730.098963	610.047509	2200.833608	2320.885062
								120.051454			120.051454
								1/2 = 60.025727			
23	-152.285.602	-152.200 85.402	+12.282	-37.660.027	-37.600 60.027	-6.427		737.251614	548.878654		
4P	-152.295.480	95.480	+7.406	-37.662.336	62.336	+14.014		461.660416			1338.056720
20	-152.292.808	92.808	-10.092	-37.676.061	74.041	+10.006	747.221772				928.636848
21	-152.285.888	85.388	-9.610	-37.672.342	72.342	-5.278	695.206620			450.677864	
22	-152.283.198	83.198	+0.014	-37.668.763	68.763	-12.315		0.962682	1024.583370		
								1442.428392	1199.874712	2024.139888	2266.693568
								242.553680			242.553680
								1/2 121.276840			

面積計算書		工区	ブロック	計算者	精算者	備考		
		ウ	40			15.青江913-1(ウ) 16.青江918-1(ウ)		
点	① X	② X-(定数)	③ X _{n-1} -X _{n+1}	④ Y	⑤ Y-(定数)	⑥ Y _{n-1} -Y _{n+1}	③ × ⑤	② × ⑥
							+	-
24	-152.293.181	-152.200 93.181	+32.646	-37.629.193	-37.600 29.193	-25.143	953.034678	2342.849883
46	-152.318.048	118.048	+17.773	-37.634.884	34.884	+36.689	619.993332	4331.063072
48	-152.310.954	110.954	-32.646	-37.665.982	65.882	+25.143	2150.783772	2789.716422
28	-152.285.602	85.402	-17.773	-37.660.027	60.027	-36.689	1066.859871	3133.313978
							3217.643643	1573.028010
							1644.615633	1644.615633
							1/2 = 822.3078165	
25	-152.294.893	-152.200 94.893	+26.429	-37.622.406	-37.600 22.406	-1.133	592.168174	107.513769
45	-152.319.610	119.610	+23.155	-37.628.060	28.060	+12.478	649.729300	1492.493580
46	-152.318.048	118.048	-26.429	-37.634.884	34.884	+1.133	921.949236	133.748384
24	-152.293.181	93.181	-23.155	-37.629.193	29.193	-12.478	675.963915	1162.712518
							1597.913151	1241.897474
							356.015677	356.015677
							1/2 = 178.0078385	

面積計算書		工区	3	ブロック	40	計算者	精算者	備考	17. 青江 916	18. 青江 920
点	①	②	③	④	⑤	⑥	⑧ × ⑤	② × ⑥		
	X	X - (定数)	X _{n-1} - X _{n+1}	Y	Y - (定数)	Y _{n-1} - Y _{n+1}	+	-	+	-
26	-152.304.360	-152.200 104.360	+33.351	-37.584.881	-37.500 84.881	-32.071		2830.866231	3346.929560	
43	-152.328.244	128.244	+15.250	-37.590.335	90.335	+43.179		1377.608750		5537.447676
45	-152.319.610	119.610	-33.351	-37.628.060	128.060	+32.071	4270.929060			3836.012310
25	-152.294.893	94.893	-15.250	-37.622.406	22.406	-43.179	1066.691500		4077.384847	
							6137.620560	4208.474981	7444.314407	7373.459986
							1929.145579			1929.145579
							1/2 = 964.5727895			
27	-152.317.672	-152.300 17.472	+29.303	-37.526.346	-37.500 26.346	-21.453		772.016838	374.826816	
39	-152.341.620	41.620	+10.772	-37.521.886	31.886	+63.989		343.475992		2663.222180
43	-152.328.244	28.244	-37.260	-37.590.335	90.335	+52.995	3365.882100			1496.790780
26	-152.304.360	4.360	-15.927	-37.584.881	84.881	-36.996	1351.899687		161.302560	
V	-152.312.317	12.317	+13.112	-37.553.339	53.339	-58.535		699.380968	720.976595	
							4717.781787	1814.873798	1257.104971	4160.012960
							2902.907989			2902.907989
							1/2 = 1451.4539945			

面積計算書		工区	ブロック	計算者	精算者	備考	19.青江 927-1 20.青江.909-2			
点	①	②	③	④	⑤	⑥	③ × ⑤	② × ⑥	⑤	⑥
	X	X-(定数)	X _{n-1} -X _{n+1}	Y	Y-(定数)	Y _{n-1} -Y _{n+1}	+	-	+	-
20	-152.320.052	-152.300 20.052	+21.957	-37.512.833	-37.500 12.833	-5.480		281.774181	109.884960	
26	-152.340.085	40.085	+17.747	-37.517.628	17.428	+14.586		309.294716		584.679810
27	-152.337.799	37.799	-21.957	-37.527.619	27.419	+5.480	602.038983			207.138520
28	-152.318.128	18.128	-17.747	-37.522.908	22.908	-14.586	406.548276		264.415008	
							1008.587259	591.068897	374.299968	791.818330
							417.518362			417.518362
							1/2 = 208.759181			
21	-152.221.413	-152.300 21.413	+21.650	-37.505.707	-37.500 5.707	-2.472		123.556550	52.932936	
25	-152.341.702	41.702	+18.672	-37.540.361	10.361	+11.721		193.460592		488.789142
26	-152.340.085	40.085	-21.650	-37.517.628	17.428	+2.472	377.316200			99.090120
20	-152.320.052	20.052	-18.672	-37.512.833	12.833	-11.721	239.617776		235.029492	
							616.933976	317.017142	287.962428	587.879262
							299.916834			299.916834
							1/2 = 149.958417			

面積計算書		工区	ブロック	計算者	精算者	備考				
				7640		21.青江909-1				
点	① X	② X-(定数)	③ X _{n-1} -X _{n+1}	④ Y	⑤ Y-(定数)	⑥ Y _{n-1} -Y _{n+1}	⑦ +	⑧ -	⑨ +	⑩ -
J2	-152.223.176	-152.300 23.176	+22.383	-37.496.476	-37.400 96.476	-4.500			2159.422308	104.292000
J4	-152.343.796	43.796	+18.526	-37.501.207	101.207	+13.885			1874.960882	608.107460
J5	-152.361.702	41.702	-22.383	-37.540.361	110.361	+4.500	2470.210263			187.659000
J1	-152.321.413	21.413	-18.526	-37.505.707	105.707	-13.885	1958.327882		297.319505	
							4428.538145	4034.383190	401.611505	795.766460
							394.154955			394.154955
							1/2=197.0774775			

面積計算書

工区

3

ブロック

~~40~~ 40

計算者



精算者



備考

水路
泥上げ

点	①	②	③	④	⑤	⑥	③ × ⑤		② × ⑥	
	X	X-(定数)	X _{n-1} -X _{n+1}	Y	Y-(定数)	Y _{n-1} -Y _{n+1}	+	-	+	-
28	-152.318.128	-152.300 18.128	+53.822	-37.522.908	-37.500 22.908	+9.780			1232.954376	177.291840
6	-152.371.681	71.481	+52.612	-37.535.160	35.144	+14.632			1848.996128	1045.909992
7	-152.370.760	70.740	-53.822	-37.537.560	37.540	-9.780	2020.477880		691.837200	
28	-152.377.659	17.659	-52.612	-37.525.360	25.364	-14.632	1334.450768		258.386488	
							3354.928648	3081.950504	950.223688	1223.201832
							272.978144			272.978144
							1/2 = 136.489072			
28	-152.317.654	-152.300 17.659	+53.268	-37.525.360	-37.500 25.364	+11.194			1351.089552	197.674846
7	-152.370.760	70.740	+52.785	-37.537.560	37.540	+13.134			1981.548900	929.099160
8	-152.370.666	70.444	-53.268	-37.538.608	38.498	-11.194	2050.711464		788.550136	
27	-152.377.472	17.472	-52.785	-37.526.366	26.346	-13.134	1390.673610		229.477248	
							3441.385074	3332.638452	1018.027384	1126.774006
							108.746622			108.746622
							1/2 = 54.373311			

面積計算書		工区	ブロック	計算者	精算者	備考				
		3	7640			陽切 1.2				
点	①	②	③	④	⑤	⑥	③ × ⑤	② × ⑥		
	X	X-(定数)	X _{n-1} -X _{n+1}	Y	Y-(定数)	Y _{n-1} -Y _{n+1}	+	-		
I	-152327142	-152.300 27.142	+3.487	-37.475.709	-37.400 75.709	-2.277		263.997283	61.802334	
1	-152330066	30.066	-0.563	-37.476.379	76.379	+2.947	43.001377		88.604502	
33	-152326579	26.579	-2.924	-37.478.656	78.656	-0.670	229.990144		17.807930	
							272.991521	263.997283	79.610264	88.604502
							8.994238			8.994238
							1/2=4.497119			
3	-152.374.571	-152.300 74.571	+1.953	-37.486.571	-37.400 86.571	-8.529		169.073163	636.016059	
II	-152383100	83.100	+6.576	-37.488.524	88.524	+10.482		582.133824	871.054200	
4	-152.381.147	81.147	-8.529	-37.497.053	97.053	-1.953	827.765037		158.480091	
							827.765037	751.206987	794.496150	871.054200
							76.558050			76.558050
							1/2=38.279025			

枚
14-14

面積計算書

工区 ω ブロック ~~40~~ 40 計算者  精算者  備考 陽切3.4.

点	①	②	③	④	⑤	⑥	③ × ⑤		② × ⑥	
	X	X-(定数)	X _{n-1} -X _{n+1}	Y	Y-(定数)	Y _{n-1} -Y _{n+1}	+	-	+	-
15	-152.336.590	-152.300 36.530	+8.329	-37.675.078	-37.600 75.078	+1.953		640.340262		71.343090
III	-152.332.577	34.577	-10.482	-37.683.607	83.607	+6.576	876.368574			227.378352
16	-152.326.048	26.048	+1.953	-37.681.654	81.654	-8.529		159.470262	222.163392	
							876.368574	799.810524	222.163392	298.721442
							76.558050			76.558050
							$\frac{1}{2} = 38.279025$			
21	-152.285.388	-152.200 85.388	-0.734	-37.672.342	-37.600 72.342	+7.909	53.099028			248.393692
IV	-152.282.464	82.464	-2.190	-37.671.672	71.672	+3.579	156.961680		295.138656	
22	-152.283.198	83.198	+2.924	-37.668.763	68.763	+0.670		201.063012		55.742660
							210.060708	201.063012	295.138656	304.136352
							8.997696			8.997696
							$\frac{1}{2} = 4.498848$			

計年
月
算日

計
算
者



檢
查
者



B. NO. 7640

2枚-1

各筆面積計算書

地番	算式	開切地積	摘要
	青江 89201	840.18	
	青江 894 (A)	322.44	
	青江 89101, 89102	948.30	
	青江 90801, 92201	619.95	
	青江 92301 (A)	171.87	
	青江 92202, 92302	444.39	
	青江 918 (A)	1041.98	
	青江 917	1055.27	
	青江 91501 (B)	420.97	
	青江 91501 (A)	170.23	
	未指定地保 3~4000	129.40	
	青江 91503	116.42	
	保留地 3- 76 -1 ⁴⁰	60.02	
	青江 91504	121.27	
	青江 91301 (B)	822.30	
	青江 918 (B)	178.00	
	青江 916	964.57	
	青江 920	1451.45	
	青江 92701 (B)	208.87 ⁷⁵	
	青江 90902	149.95	
	青江 90901	197.07	
	管理道	54.37	
	水路	136.48	
	計	10,625.75 ⁶³	

全体

10,625.79
差 - 0.04

