

BLOCK NO. 37

街 区 計 算

街区略図

工区

ウ

ブロック

37

記入者



点検者

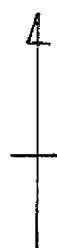


$X = -152.323.054$
 $Y = -37.470.671$

$W = 6.000$

$X = -152.323.506$
 $Y = -37.370.696$

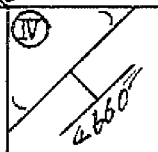
(C181) (A3° 41' 28") (L = 100.172) (273° 41' 29") (C151)
(44° 12' 15") (L = 73.785) (43° 17' 35") (46° 38' 47") (46° 38' 47")



$W = 8.000$

(112° 53' 53") (L = 78.511) (12° 53' 53")

(L = 60.117)



(L = 73.785)



(L = 76.457)

(L = 96.836)

(180° 24' 3")

$W = 6.000$

(C73) (4° 2' 10") (40° 0' 3") (102° 53' 56")

(L = 109.230)

(L = 119.847)

(77° 30' 7")

(282° 53' 56")

(C72)

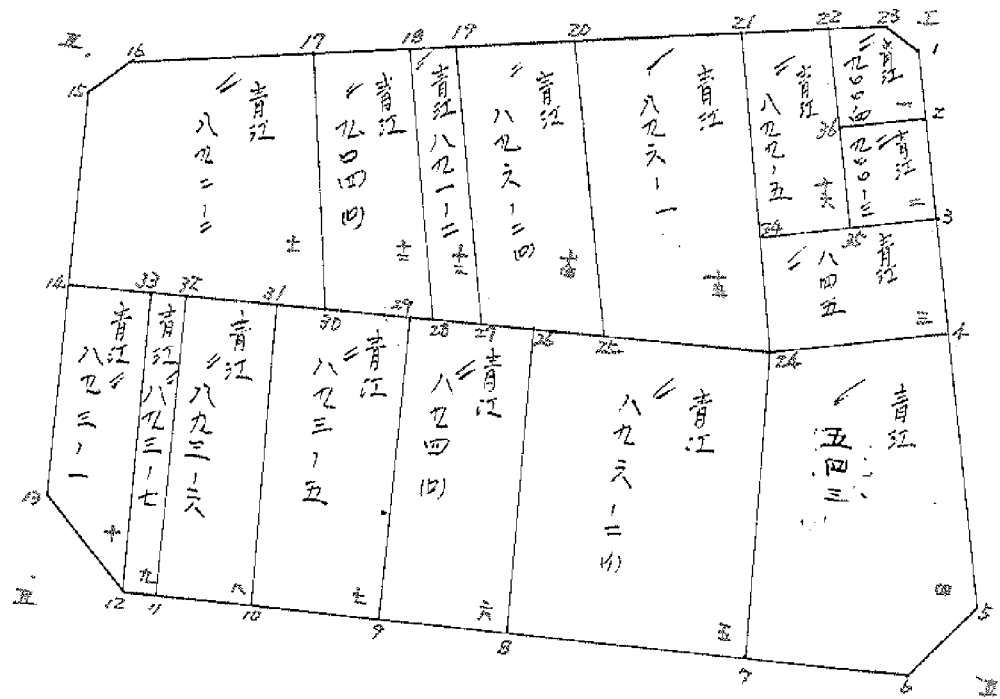
$X = -152.349.589$
 $Y = -37.488.196$

$W = 32.000$

$X = -152.426.342$
 $Y = -37.371.373$

画地計算

B.No. ~~63~~³⁷



面積計算書

工区

3

ブロック

37

計測者



繕算者



備考

1.青工 900-4
2.青工 900-3

点	①	②	③	④	⑤	⑥	③ × ⑤		② × ⑥	
	X	X-(定数)	X _{n-1} -X _{n+1}	Y	Y-(定数)	Y _{n-1} -Y _{n+1}	+	-	+	-
1	⁻¹⁵² 225.317	^{-152.330} 5.317	+11.038	⁻³⁷ 273.736	^{-37.370} 3.736	-2.918			41.237968	15.545006
2	243.162	13.162	+7.592	273.791	3.791	+9.248			28.781272	123.038376
36	242.909	12.909	-11.462	283.084	13.084	+9.241	149.837968			120.582969
22	231.710	1.710	-10.785	283.132	13.132	-6.375	141.628620			10.901250
23	222.124	2.124	+3.607	276.709	6.709	-9.396			24.199365	19.957104
									291.466588	94.218603
									46.373360	283.61345
									197.247985	197.247985
									× 1/2 = 98.6239925	
7	⁻¹⁵² 243.162	^{-152.340} 3.162	+11.727	⁻³⁷ 273.791	^{-37.370} 3.791	-9.213			44.457057	29.131506
4	254.836	14.636	+11.414	273.871	3.871	+9.243			44.182594	135.280548
45	254.576	14.576	-11.727	283.084	13.084	+9.213	152.849718			134.288688
26	242.909	2.909	-11.414	283.084	13.084	-9.243	149.240775			24.887887
									202.190494	88.640651
									55.019393	269.569236
									213.549843	213.549843
									× 1/2 = 106.7749215	

面積計算書

工区

3

ブロック

37

計測者



精算者



備考

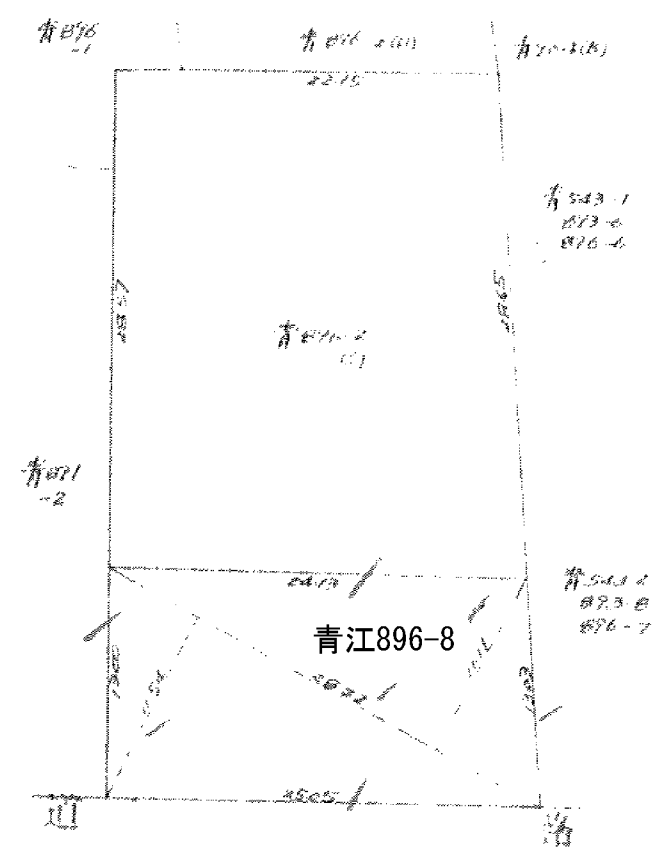
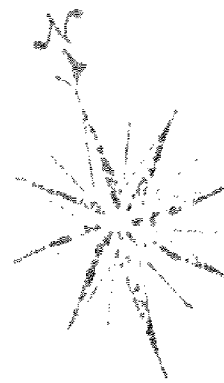
清江 845

4. 青江 898 899-4 543

点	①	②	③	④	⑤	⑥	③ × ⑤		② × ⑥	
	X	X-(定数)	X _{n-1} -X _{n+1}	Y	Y-(定数)	Y _{n-1} -Y _{n+1}	+	-	+	-
3	354.646	4.636	+14.857	373.871	3.871	-19.495			57.511447	90.378820
4	359.264	19.264	+13.697	373.974	3.974	+19.701			54.431878	381.490164
24	368.333	18.333	-14.857	393.572	23.572	+19.495	350.209204			357.601835
34	354.507	4.507	-13.697	393.469	23.469	-19.701	321.454893		88.792407	
							671.664097	111.943026	179.171227	738.891999
							559.720772			559.720772
							x 1/2 = 279.860386			
4	369.264	9.364	+32.185	373.974	3.974	-19.380			127.903190	181.474320
5	400.518	40.518	+37.950	374.192	4.192	+8.808			159.086400	356.882544
6	407.314	47.314	+2.508	382.782	17.782	+27.312			32.057256	1292.239968
7	403.026	43.026	-38.981	401.504	31.504	+10.790	1228.057624			464.250640
24	368.333	8.333	-33.662	393.572	23.572	-27.530	793.480664		229.607490	
							2021.538088	319.046846	410.881810	2113.373052
							1702.491242			1702.491242
							x 1/2 = 851.245621			

変更後の資料なし

面積計算書						工区	3	ブロック	37	計算者	精算者	備考	5. 青江 896-2 ㊦	6. 青江 894 ㊦
点	①	②	③	④	⑤	⑥	③ × ⑤	② × ⑥						
	X	X-(定数)	X _{n-1} -X _{n+1}	Y	Y-(定数)	Y _{n-1} -Y _{n+1}	+	-						
24	⁻¹⁵² 382.333	^{-152.360} 8.333	+41.030	⁻³⁷ 393.572	^{-37.390} 3.572	-19.722	146.559160	164.343426						
7	403.026	43.026	+28.359	401.504	11.504	+35.592	326241936	1531.381392						
8	396.692	36.692	-41.030	429.164	39.164	+19.722	1606898920	723.629624						
26	381.996	1.996	-28.359	421.226	31.226	-35.592	225.538934	71.04632						
							2497.437054	472.801096						
							225.385058	2255.021016						
							2019.635958	2019.635958						
							変更後の資料なし							
							x 1/2 = 1009.817979							
26	⁻¹⁵² 381.996	^{-152.350} 11.996	+37.978	⁻³⁷ 421.226	^{-37.420} 1.226	-6.386	46.561028	76.606456						
8	396.692	46.692	+31.414	429.164	9.164	+22.264	287.877896	1039.552688						
9	393.410	43.410	-37.978	443.490	23.490	+6.386	892.103220	277.216260						
29	358.714	8.714	-31.414	425.550	15.550	-22.264	488.487700	194.008496						
							1380.59092	234.638924						
							270.614952	1316.766948						
							1066.151996	1066.151996						
							変更後の資料なし							
							x 1/2 = 523.075998							



求 積

$$\frac{(11.11 + 11.54) \times 20.22 \sqrt{2}}{2} = 319.5215$$
 地 積 312.59 m^2

面積計算書



工区 3 ブロック 37 計算者  検算者  備考 7.青江 893-5
 8.青江 893-6

点	①	②	③	④	⑤	⑥	③ × ⑤		② × ⑥	
	X	X-(定数)	X _{n-1} -X _{n+1}	Y	Y-(定数)	Y _{n-1} -Y _{n+1}	+	-	+	-
29	⁻¹⁵² 358.714	^{-152.350} 8.714	+38.089	⁻³⁷ 435.550	^{-37.430} 5.550	-6.871			211.393950	59.873894
9	393.410	43.410	+31.303	443.490	13.490	+22.755			422.277470	987.794650
10	390.017	40.017	-38.089	458.305	28.305	+6.871	1078.109145			274.956807
31	355.321	5.321	-31.303	450.361	20.361	-22.755	637.360883			121.079355
							1715.469528	633.671420	180.953249	1262.751357
							1081.798108			1081.798108
							x 1/2 = 540.899054			
							変更後の資料なし			
31	⁻¹⁵² 355.321	^{-152.350} 5.321	+37.377	⁻³⁷ 450.361	^{-37.450} 0.361	-3.758			13.493097	19.976318
10	390.017	40.017	+32.017	458.305	8.305	+19.643			265.901185	786.053931
11	387.338	37.338	-37.377	470.004	20.004	+3.758	747.689508			140.316204
32	352.640	2.640	-32.017	462.063	12.063	-19.643	386.221071			51.857520
							1133.910579	279.394283	71853838	926.370125
							854.516297			854.516297
							x 1/2 = 427.2581485			
							変更後の資料なし			

面積計算書		工区	3	ブロック	37	計算者	精算者	備考	9. 青江 893-7	10. 青江 893-1
点	①	②	③	④	⑤	⑥	③ × ⑤		② × ⑥	
	X	X-(定数)	X _{n-1} -X _{n+1}	Y	Y-(定数)	Y _{n-1} -Y _{n+1}	+	-	+	-
10	⁻¹⁵² 252.640	^{-152.350} 2.640	+35.201	⁻³⁷ 462.063	^{-37.460} 2.063	+5.749			72.619663	15.177360
11	287.338	27.338	+34.196	470.004	10.004	+10.134			242.096784	378.383292
12	286.836	26.836	-35.201	472.197	12.197	-5.749	429.366597		211.770164	
10	252.137	2.137	-34.196	464.255	4.255	-10.134	145.503980		21.656358	
							574.850577	414.716467	233.626522	393.560552
							160.134130			160.134130
							合筆後の資料なし		x 1/2 = 22.067035	
10	⁻¹⁵² 252.137	^{-152.350} 2.137	+36.652	⁻³⁷ 464.255	^{-37.460} 4.255	-0.583			15.954260	245871
12	286.836	26.836	+24.216	472.197	12.197	+14.518			295.362552	54.785018
13	276.353	26.353	-36.652	478.773	18.773	+2.583	628.059996			15363799
14	250.184	0.184	-24.216	472.780	12.780	-14.518	209.680480		2.571312	
							997.548476	451.316812	2.917183	550.148947
							646.231664			546.231664
							合筆後の資料なし		x 1/2 = 273.115832	

面積計算書		工区	3	ブロック	37	計測者	精算者	備考	11.青江 892-2	12.青江 904 (4)
点	①	②	③	④	⑤	⑥	③ ×	⑤	② ×	⑥
	X	X-(定数)	X _{n-1} -X _{n+1}	Y	Y-(定数)	Y _{n-1} -Y _{n+1}	+	-	+	-
17	⁻¹⁵² 327.885	^{-152.320} 7.885	+30.614	⁻³⁷ 442.442	^{-37.440} 2.442	-21.668			74.759388	170.852180
20	357.089	37.089	+27.299	442.644	2.644	+30.338			58.958556	1125.206082
14	350.184	30.184	-27.883	472.780	32.780	+25.332	914.002760			764.621088
15	329.206	9.206	-23.709	467.976	27.976	-8.468	663.282984			77.956408
16	326.475	6.475	-1.321	464.312	24.312	-25.534	32.116152			165.332650
									1609.403876	133.717944
									414.141238	1889.827170
									1475.685932	1475.685932
									x 1/2 = 737.842966	
18	⁻¹⁵² 328.644	^{-152.320} 8.644	+31.897	⁻³⁷ 430.669	^{-37.430} 0.669	-11.549			21.339093	99.829556
28	359.782	39.782	+28.445	430.893	0.893	+11.975			25.401385	476.389650
20	357.089	37.089	-31.897	442.644	12.644	+11.549	403.305668			428.340861
17	327.885	7.885	-28.445	442.442	12.442	-11.975	353.912690			94.422875
									757.218358	46.740478
									194.252431	904.730311
									710.477880	710.477880
									x 1/2 = 355.238940	
									変更後の資料なし	

面積計算書

工区	3	ブロック	37	計算者		精算者		備考	13.青工 891-2 14.青工 896-2(4)
----	---	------	----	-----	---	-----	---	----	-------------------------------

点	①	②	③	④	⑤	⑥	③ × ⑤		② × ⑥	
	X	X-(定数)	X _{n-1} -X _{n+1}	Y	Y-(定数)	Y _{n-1} -Y _{n+1}	+	-	+	-
19	-152 229.503	-152.320 9.503	+32.408	-37 425.112	-37.420 5.112	-5.321			165.669696	47.904963
27	261.052	41.052	+30.779	425.348	5.348	+5.781			164.606092	237.321612
28	259.782	29.782	-32.408	430.893	10.893	+5.321	252.020344			211.680022
18	328.644	8.644	-30.779	430.669	10.669	-5.781	228.381151		48.970964	
							681.401495	230.275788	97.875927	449.501634
							251.125707			251.125707
							変更後の資料なし		$\times \frac{1}{2} = 175.5628535$	
20	-152 229.884	-152.320 9.884	+35.175	-37 411.443	-37.410 1.443	-13.406			50.757525	132.504904
25	264.178	44.178	+31.168	411.706	1.706	+13.905			53.172608	614.295090
27	261.052	41.052	-35.175	425.348	15.348	+13.406	539.865900			550.343112
19	229.503	9.503	-31.168	425.112	15.112	-13.905	471.010816		125.186715	
							1010.876716	103.930133	257.691619	1164.638202
							906.946583			906.946583
							変更後の資料なし		$\times \frac{1}{2} = 453.4732915$	

面積計算書		工区	3	ブロック	37	計算者	精算者	備考	15.青江898-10	16.青江899-5
点	①	②	③	④	⑤	⑥	③	⑤	②	⑥
	X	X-(定数)	X _{n-1} -X _{n+1}	Y	Y-(定数)	Y _{n-1} -Y _{n+1}	+	-	+	-
21	⁻¹⁵² 331.054	^{-152.320} 11.054	+38.449	⁻³⁷ 393.295	^{-37.390} 3.295	-17.871			126.689455	197.646022
24	328.333	48.333	+33.124	393.572	3.572	+18.411			118.318928	889.958863
25	344.178	44.178	-38.449	411.706	21.706	+17.871	834.573992			789.505038
20	329.884	9.884	-33.124	411.443	21.443	-18.411	710.270932			81.974322
							1544.851926		265.008303	379.520358
							1299.862540			1679.343901
										1299.862540
							変更後の資料なし		$\times \frac{1}{2} = 649.92177157$	
22	⁻¹⁵² 331.710	^{-152.320} 1.710	+23.522	⁻³⁷ 383.132	^{-37.380} 3.132	-10.261			73.670906	17.546310
25	354.576	24.576	+22.797	383.034	3.034	+10.337			69.166098	254.042112
24	354.507	24.507	-23.522	393.469	13.469	+10.261	316.817818			251.466327
21	331.054	1.054	-22.797	393.295	13.295	-10.337	303.086115			10.895198
							619.903933		742.837002	28.441508
							477.066931			505.508429
										477.066931
							$\times \frac{1}{2} = 238.5334655$			

面積計算書		工区	3	ブロック	37	計算者	精算者	備考	隅切工, II	
点	①	②	③	④	⑤	⑥	③ × ⑤	② × ⑥		
	X	X-(定数)	X _{n-1} -X _{n+1}	Y	Y-(定数)	Y _{n-1} -Y _{n+1}	+	-	+	-
I	⁻¹⁵² 332.317	^{-152.330} 2.317 =	+3.193 =	⁻³⁷ 373.715	^{-37.370} 3.715 =	-2.973 =			11.861995	6.888461
1	335.317	5.317 =	-0.193 =	373.736	3.736 =	+2.996 =	0.721048			15.919098
20	332.124	2.124 =	-3.000 =	376.709	6.709 =	-0.021 =	20.127000		0.044606	
							20.848048		11.861995	6.933065 =
							8.986058			8.986053
							x 1/2 = 4.4930265			
5	⁻¹⁵² 400.518	^{-152.600} 0.518 =	+1.954 =	⁻³⁷ 374.192	^{-37.370} 4.192 =	-8.529 =			8.191168	4.48022
II	409.269	9.268 =	+6.796 =	374.253	4.253 =	+8.590 =			28.903388	79.612120
6	407.316	7.314 =	-8.750 =	382.782	12.782 =	-0.061 =	111.842500		0.446154 =	
							111.842500		37.096556	4.866176 =
							74.767944			74.767944
							x 1/2 = 37.373972			

面積計算書						工区	3	ブロック	37	計量者	精算者	備考	附記. III IV
点	①	②	③	④	⑤	⑥	③ × ⑤	② × ⑥					
	X	X-(定数)	X _{n-1} -X _{n+1}	Y	Y-(定数)	Y _{n-1} -Y _{n+1}	+	-					
12	⁻¹⁵² 386.836	^{-152.570} 16.836	+8.529	⁻³⁷ 472.197	^{-37.470} 2.197	+1.953	18.738213	32.880708					
III	384.882	14.882	-10.483	480.726	10.726	+6.576	112.440658	97.864032					
13	376.353	6.353	+1.954	478.773	8.773	-8.529	17.142442	54.184737					
							112.440658	35.880655					
							76.560003	54.184737					
								130.744740					
								76.560003					
								x 1/2 = 38.2800015					
15	⁻¹⁵² 329.206	^{-152.320} 9.206	-0.193	⁻³⁷ 467.976	^{-37.460} 7.976	+2.994	1.539368	27.562764					
IV	326.282	6.282	-2.731	467.306	7.306	-3.666	19.952686	23.07248					
16	326.475	6.475	+2.924	464.312	4.312	+0.670	12.608288	4.338250					
							21.492054	12.608288					
							8.883766	23.07248					
								31.901014					
								8.883766					
								x 1/2 = 4.441883					

計年月
算日

計算者



検査者



B. NO. 37

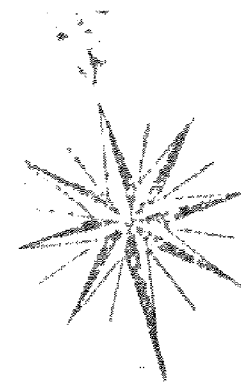
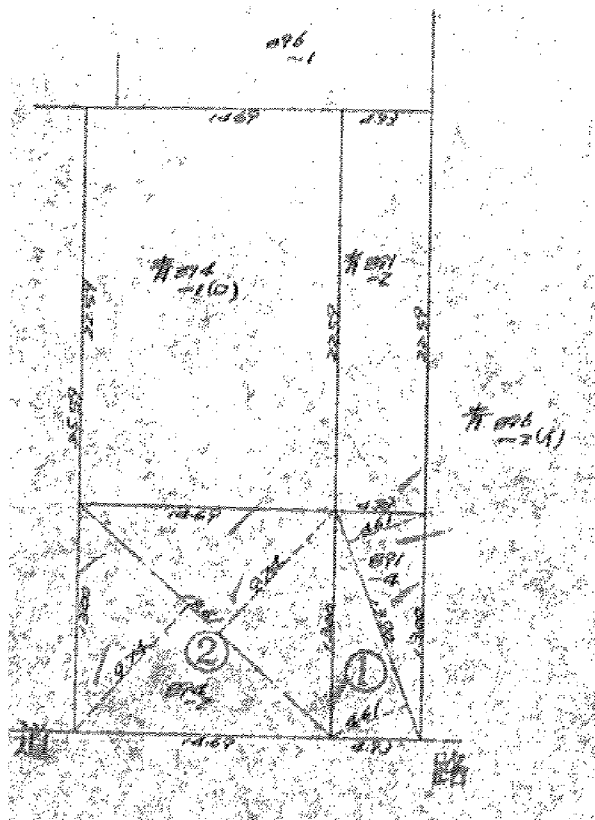
各筆面積計算書

地番	算式	隅切	地積	摘要
1	青江900a4		98.62	/
2	青江900a3		106.77	/
3	青江865		279.86	/
4	青江899 ⁵⁴³ 899a5		851.24	/
5	青江896a24		1009.81	/
6	青江894(12)		523.07	/
7	青江893a5		540.89	/
8	青江893a6		427.25	/
9	青江893a7		80.06	/
10	青江893a1		273.11	/
11	青江892a2		737.86	/
12	青江904(10)		255.23	/
13	青江891a2		175.56	/
14	青江896a2(10)		453.47	/
15	青江896a11		649.92	/
16	青江899a5		238.53	10
計			6801.23	
全体			6801.29	
差			0.06	
	換地		6801.29	

NO.	NAME	CODE	X	Y	D X	D Y	X * DY	Y * DX
1	ア		-152382.617	-37374.067	5.427	33.651	-5127827.444667	-202829.061609
2	D		-152374.791	-37407.625	-23.105	31.203	-4754550.603573	864303.175625
3	B		-152359.512	-37405.270	-12.588	-14.099	2148116.759688	470857.538760
4	A		-152362.203	-37393.526	8.821	-11.698	1782333.050694	-329848.292846
5	ア		-152368.333	-37393.572	7.161	-19.552	2979105.646816	-267775.369092
6	ア		-152369.364	-37373.974	14.284	-19.505	2971964.444820	-533849.844616

{ 893-6
896-6
543-3

コウケイ	-858.146222	858.146222
ハイ メッセ	858.146222	
メッセ	429.073111	
ツボスウ	129.794616	



① 求 積 091-2

$$\frac{(461 + 261) \times 1290}{2} = 64.0790$$

地 積 64.0790

② 求 積 091-1

$$\frac{(974 + 879) \times 1261}{2} = 191.0014$$

地 積 191.0014