

**BLOCK NO. 70-1**

**街区計算**

画地略図

工区

3

ブロック 70-1

記入者

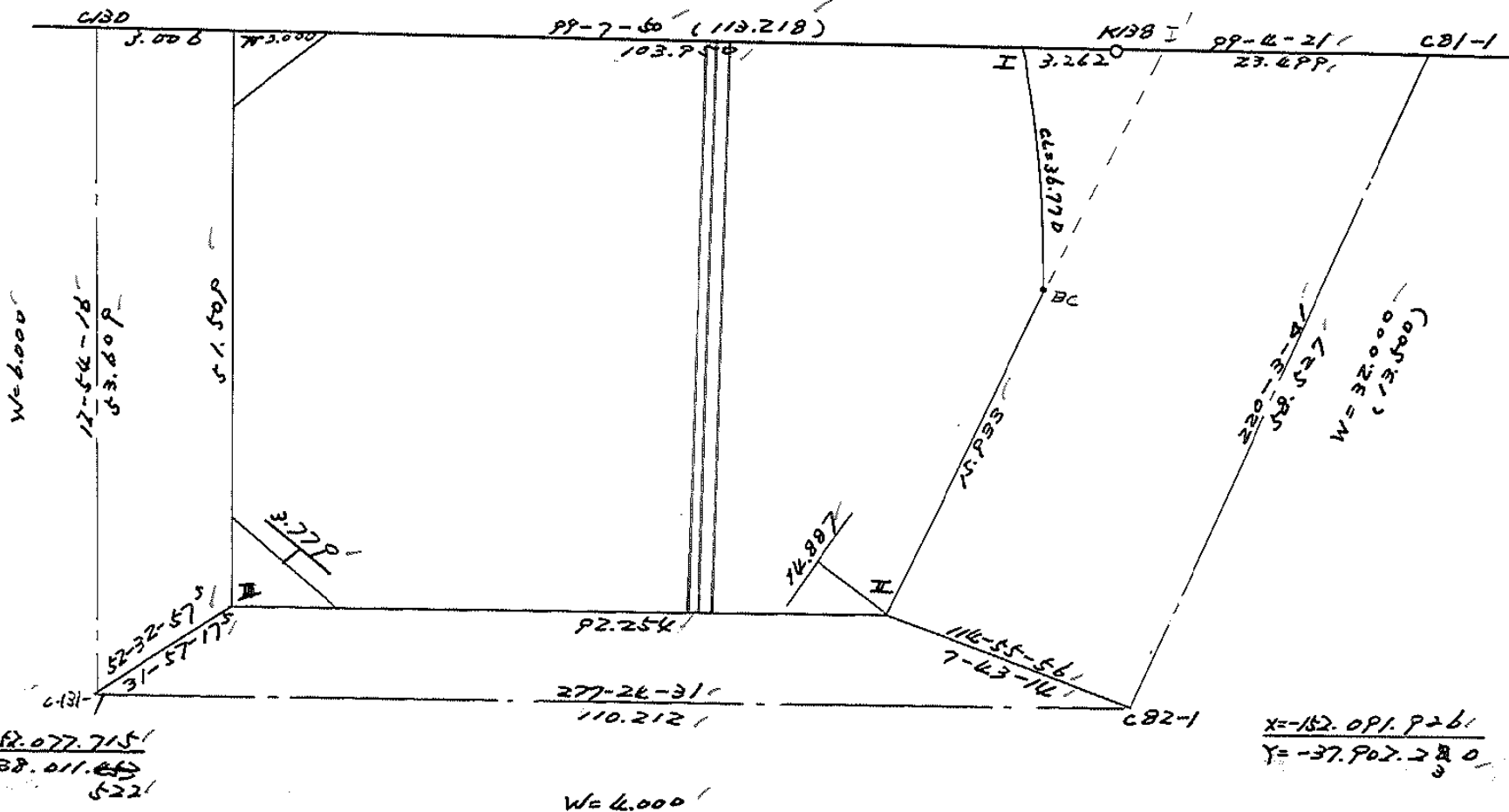


点検者



$X = -152.025.460'$   
 $Y = -37.999.550'$

$X = -152.013.426'$   
 $Y = -37.987.767'$



$X = -152.077.715'$   
 $Y = -38.011.645'$   
522'

$X = -152.091.926'$   
 $Y = -37.902.280'$   
9

# 面積計算書

工区

3

ブロック

70-1

計算者



精算者



備考

全体

点	①	②	③	④	⑤	⑥	③ × ⑤	② × ⑥		
	X	X-(定数)	X <sub>n-1</sub> -X <sub>n+1</sub>	Y	Y-(定数)	Y <sub>n-1</sub> -Y <sub>n+1</sub>			+	-
I	-152. 042.909	-157.000 42.908	+49.910	-37 890.987	-37.800 90.987	-90.226		4541.161170	3871.417208	
B.C	075.847	75.847	+45.100	906.356	106.356	+25.614		4800.165348	1942.745058	
II	088.041	88.041	+0.298	916.601	116.601	+101.729		34.747098	8956.222889	
III	076.145	76.145	-12.104	-38 208.025	208.025	+79.981	12922.910840		6090.153245	
IV	025.937	25.937	-33.237	-37 996.582	196.582	-117.098	6533.795904		3037.170826	
							19456.706774	93760.73616	4908.589034	16989.221192
							10080.633158			10080.633158
							× 1/2 = 5040.316579			
							5040.31 + 58.40 = 5098.71			

# 面地計算

画地略図

工区

3

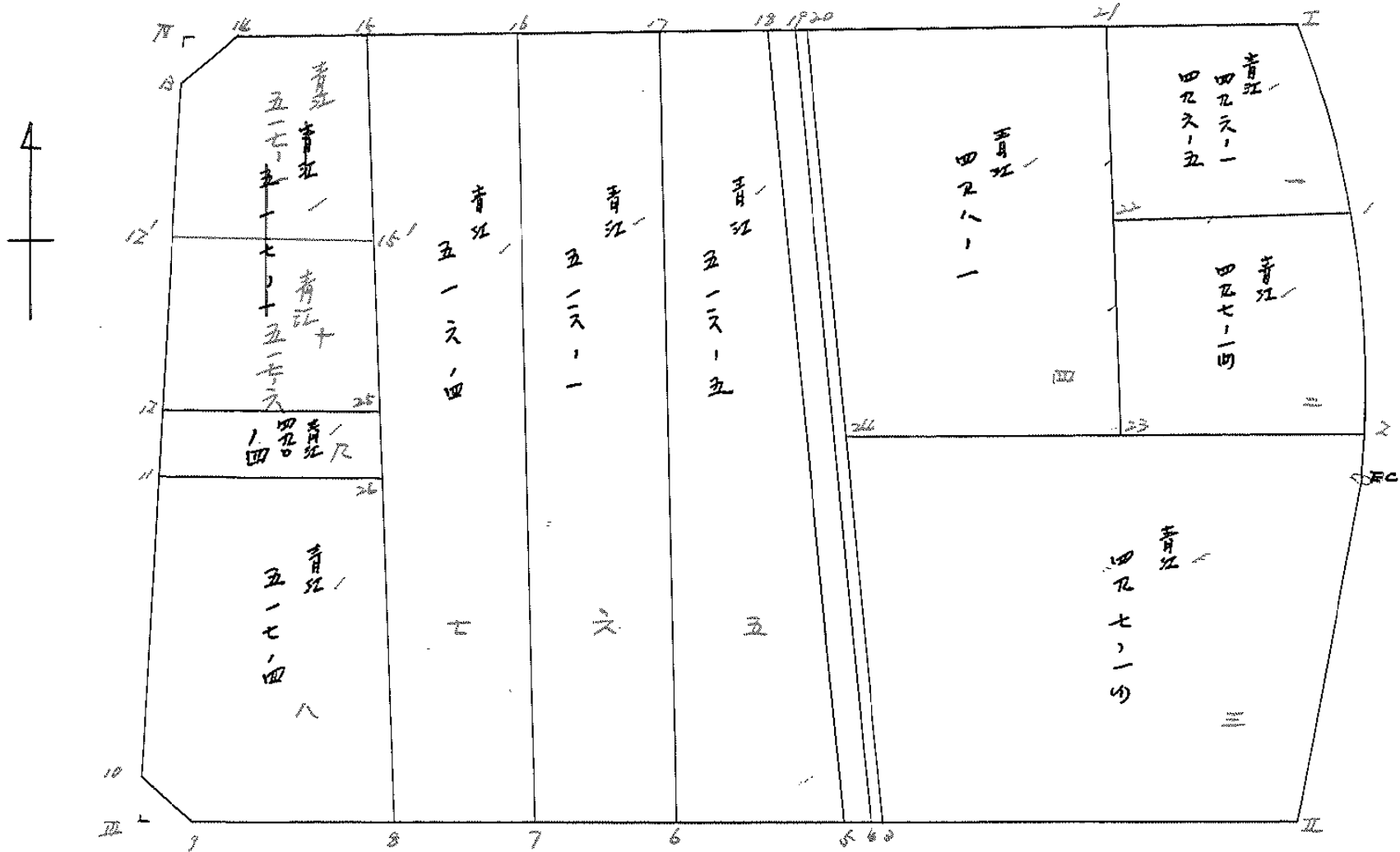
ブロック

70-1

記入者



点検者



# 面積計算書

工区

ウ

ブロック

70-1

計算者



精算者



備考

1. 青江 496-1  
496-5  
2. 青江 497-1(ウ)

点	① X	② X-(定数)	③ X <sub>n-1</sub> -X <sub>n+1</sub>	④ Y	⑤ Y-(定数)	⑥ Y <sub>n-1</sub> -Y <sub>n+1</sub>	③ × ⑤	② × ⑥
		-152, 030			-37, 890			
I	-152, 042, 928	12, 908	+ 17, 823	-37, 890, 987	0, 987	-14, 318	19, 565, 301	184, 816, 744
1	-152, 059, 603	29, 603	+ 13, 971	-37, 896, 133	6, 133	+ 22, 121	85, 684, 143	654, 847, 963
22	-152, 056, 879	26, 879	- 17, 823	-37, 913, 108	23, 108	+ 14, 318	458, 069, 884	384, 843, 522
2/	-152, 039, 780	9, 780	- 13, 971	-37, 910, 451	20, 451	- 22, 121	285, 720, 921	216, 343, 380
							743, 790, 805	105, 249, 444
							638, 541, 361	487, 160, 124
								1039, 701, 485
								638, 541, 361
							1/2 = 319, 2706805	
							319, 27 + 6, 37 = 325, 64	
		-152, 050			-37, 890			
1	-152, 059, 603	9, 603	+ 12, 862	-37, 896, 133	6, 133	- 11, 343	78, 882, 646	108, 926, 829
2	-152, 069, 744	19, 744	+ 8, 049	-37, 901, 765	11, 765	+ 18, 649	94, 696, 485	368, 149, 909
23	-152, 067, 652	17, 652	- 12, 862	-37, 914, 782	24, 782	+ 11, 343	318, 746, 084	200, 226, 636
22	-152, 056, 879	6, 879	- 8, 049	-37, 913, 108	23, 108	- 18, 649	185, 996, 292	128, 286, 471
							504, 742, 376	173, 579, 131
							331, 163, 245	237, 213, 000
								568, 376, 545
								331, 163, 245
							1/2 = 165, 5816225	
							165, 58 + 1, 85 = 167, 43	

# 面積計算書

工区

ウ

ブロック

70-1

計算者



精算者



備考

3. 青江 497-14)

4. 青江 498-1

点	①	②	③	④	⑤	⑥	⑦	⑧	⑨	⑩	⑪	⑫
	X	X-(定数)	X <sub>n</sub> - X <sub>n+1</sub>	Y	Y-(定数)	Y <sub>n-1} - Y<sub>n-1</sub></sub>	+	-	+	-	+	-
Σ	-152,069.741	-9.741	+13.120	-37,901.765	-1.765	-39.106			23,156.800		380,931,446	
BC	-152,075.847	15.847	+18.300	-37,906.366	6.366	+14.836			116.314800			234,106.092
II	-152,088.041	28.041	+8.345	-37,916.601	16.601	+39.849			138,535.345			117,405.809
ω	-152,084.197	24.197	-25.314	-37,906.205	46.205	+28.861	1169.633.370					698,205.312
ΣU	-152,062.727	2.727	-14.451	-37,945.467	45.467	-44.440	656.971.367				121,187.880	
							1826.604777	278,006.945	402,119.426	2050.717>13		
							1548.497.787				1548.497.787	
							分筆後の座標なし					
									1/2 = 774.2988935			
									774.29 + 0.54 = 774.83			
21	-152,039.780	9.780	+33.341	-37,910.451	0.451	-29.696			15,036.791		290,426.880	
23	-152,067.657	37.657	+22.947	-37,914.787	4.787	+35.011			109.732.554			1318,234.192
24	-152,062.727	32.727	-33.341	-37,945.467	35.467	+29.696	1182.338.442					971,860.992
2D	-152,034.311	4.311	-22.947	-37,944.478	34.478	-35.011	791.166.666				150,922.421	
							1973,605.208	124,769.345	441,359.301	2290,095.164		
							1848.735.863				1848.735.863	
									1/2 = 924.3679315			

# 面積計算書

工区

ウ

ブロック

70-1

計算者



精算者



備考

5 青江 516-5  
6 青江 516-1

点	①	②	③	④	⑤	⑥	⑦	⑧	⑨	⑩
	X	X-(定数)	X <sub>n-1</sub> -X <sub>n+1</sub>	Y	Y-(定数)	Y <sub>n-1</sub> -Y <sub>n+1</sub>	+	-	+	-
18	-152,033.751	3.751	+51.638	-37,947.960	7.960	-8.444		411,038,480	32,048,544	
5	-152,023.738	53.738	+48.055	-37,949.690	9.690	+16.586		465,652,950		891,298,468
6	-152,021.806	51.806	-51.638	-37,964.546	24.546	+8.444	1267,506,368			442,630,464
17	-152,032.100	2.100	-48.055	-37,959.234	18.234	-16.586	876,234,870		34,830,600	
							2143,741,218	876,691,430	66,879,144	1333,928,932
							1267,049,788			12,67,049,788
										1/2 = 633,524,894
17	-152,032.100	2.100	+51.664	-37,959.234	8.234	-5.875		425,401,376	12,337,500	
6	-152,021.806	51.806	+48.033	-37,964.546	14.546	+19.179		698,688,018		993,587,274
7	-152,020.133	50.133	-51.664	-37,977.413	27.413	+5.875	1416,265,232			294,531,375
16	-152,030.142	0.142	-48.033	-37,970.421	20.421	-19.179	980,881,893		2,723,418	
							2397,147,125	1124,089,394	15,260,918	1288,118,649
							1273,057,721			1273,057,721
										1/2 = 636,528,865



# 面積計算書

工区

ウ

ブロック

70-1

計算者

精算者

備考

7. 新2 516-4

8. 新江 517-4

点	① X	② X-(定数)	③ X <sub>n-1</sub> -X <sub>n+1</sub>	④ Y	⑤ Y-(定数)	⑥ Y <sub>n-1</sub> -Y <sub>n+1</sub>	⑦ +	⑧ -	⑨ +	⑩ -
16	-152,030.142	-152,020.142	+52.238	-37,970.421	-37,970.421	-6.984		21.992198		70.821728
7	-152,080.133	60.133	+48.162	-37,977.413	7.413	+21.059		357.024906		1266.340247
8	-152,078.304	58.304	-52.238	-37,991.480	21.480	+6.984	1122.072240			407.195136
15	-152,027.895	7.895	-48.162	-37,984.397	14.397	-21.059	693.388314			166.260805
							1215.460554	379.017104	237.092533	1673.535993
							1436.443450			1436.443450
										Y <sub>2</sub> = 718.221725
26	-152,056.650	-152,050.650	+24.034	-37,988.437	8.437	-11.593		202.774858		77.093450
8	-152,078.304	28.304	+19.753	-37,991.480	11.480	+17.664		226.764440		499.961856
9	-152,076.403	26.403	-4.108	-38,006.101	26.101	+16.158	107.222908			426.619674
10	-152,074.196	24.196	-22.133	-38,007.638	27.638	-3.028	611.711854			73.264488
11	-152,054.270	4.270	-17.546	-38,003.073	23.073	-19.201	404.838258			81.988270
							1123.773620	429.539298	232.347208	926.581530
							694.234322			694.234322
										Y <sub>2</sub> = 347.117161

# 面積計算書

工区

2

ブロック

707

計算者



精算者



備考

9 番 12 490-4

10 番 12 417-1

点	① X	② X-(定数)	③ X <sub>n-1</sub> -X <sub>n+1</sub>	④ Y	⑤ Y-(定数)	⑥ Y <sub>n-1</sub> -Y <sub>n+1</sub>	③ ×	⑤	② ×	⑥
		-152,050			-37,980					
25	152,053.469	3.469	+5.518	-37,987.990	7.990	-12.917		44,088.820	48,278.073	
26	152,056.650	6.650	+0.801	-37,988.437	8.437	+10.083		6,758.037		100,301.950
11	152,054.270	4.270	-5.518	-38,003.073	23.073	+13.917	127,316.814			-49,425.590
12	152,051.132	1.132	-0.801	-38,002.354	22.354	-15.083	17,905.554		17,073.956	
							145,222.368	40,846.847	65,352.029	159,727.440
							94,375.511			94,375.511
									1/2 = 47,187.7555	
		-152,020			-37,980					
15	152,027.895	7.895	+27.056	-37,984.397	4.397	-5.630		118,965.232	44,448.850	
25	152,053.469	33.469	+23.237	-37,987.990	7.990	+17.957		185,663.630		601,002.833
12	152,051.132	31.132	-24.608	-38,002.354	22.354	9.262	150,087.232			288,344.584
13	152,028.861	8.861	-24.719	-37,997.252	17.252	-8.784	426,452.188		77,391.924	
14	152,028.413	6.413	-0.966	-37,993.620	13.620	-12.855	13,156.920		82,439.115	
							989,696.340	304,628.862	204,279.939	889,347.417
							685,067.478			685,067.478
									1/2 = 342,533.739	

# 面積計算書

工区

ウ

ブロック

70-1

計算者



精算者



備考 青江 517-6  
青江 517-1

点	①	②	③	④	⑤	⑥	③ ×	⑤	② ×	⑥
	X	X-(定数)	X <sub>n-1</sub> -X <sub>n+1</sub>	Y	Y-(定数)	Y <sub>n-1</sub> -Y <sub>n+1</sub>	+	-	+	-
	-152	-152.040		-37	-37.980					
15'	043.421	3.421	+12.180	986.578	6.578	-12.109		80.120060	41.424899	
25'	053.469	13.469	+7.711	987.990	7.990	+15.776		61.610890	212.486944	
12	051.132	11.132	-12.180	982.954	22.954	+12.109	272.271720			134.797388
12'	061.289	1.289	-7.711	980.099	20.099	-15.776	154.983389		20.235264	
							427.255109	141.730930	61.680153	247.284338
							285.524179			285.624179
							× 1/2 = 142.7620895			
	-152	-152.020		-37	-37.980					
15	027.895	7.895	+17.008	984.397	6.397	-7.042		74.784176	55.596590	
15'	043.421	23.421	+13.394	986.578	6.578	+15.702		88.105732	267.756542	
12'	041.239	21.239	-14.560	980.099	20.099	+10.574	292.641460			227.238786
10	028.861	8.861	-14.876	987.252	17.252	-6.479	256.660752		57.410419	
14	026.413	6.413	-0.966	993.620	13.620	-12.855	13.158920		82.429115	
							562.439112	182.889908	895.646124	594.995328
							299.549204			299.549204
							× 1/2 = 199.774602			

# 面積計算書

工区

ウ

ブロック

70-1

計算者



精算者



備考

現上付  
永路

点	① X	② X-(定数)	③ X <sub>n-1</sub> -X <sub>n+1</sub>	④ Y	⑤ Y-(定数)	⑥ Y <sub>n-1</sub> -Y <sub>n+1</sub>	③ ×	⑤	② ×	⑥
							+	-	+	-
20	-152,034.311	-152,030 4.311	+50.041	-37,944.478	-37,940 4.478	+0.737		224,083,598		3,154,642
3	-152,084.197	54.197	+49.751	-37,946.205	6.205	+2.727		308,704,944		147,510,624
4	-152,084.067	54.067	-50.041	-37,947.200	7.200	-0.737	360,295,200		39,573,384	
19	-152,034.151	4.151	-49.751	-37,945.473	5.473	-2.727	272,287,223		11,289,022	
							632,582,423	432,788,443	50,872,406	150,666,276
							99,793,870			99,793,870
									1/2 = 49,896,935	
19	-152,034.151	-152,030 4.151	+50.311	-37,945.473	-37,940 5.473	-0.760		275,352,103		3,154,760
4	-152,084.067	54.067	+49.587	-37,947.200	7.200	+4.217		357,026,400		227,979,454
5	-152,083.738	53.738	-50.311	-37,949,690	9.690	+0.760	487,513,490			40,840,880
18	-152,033.751	3.751	-49.587	-37,947.960	7.960	-4.217	394,712,420		15,817,967	
							882,226,110	632,378,403	18,972,727	268,820,334
							249,847,607			249,847,607
									1/2 = 124,923,803.5	

# 面積計算書

点	I		II		III		IV			
	①	②	③	④	⑤	⑥	⑦	⑧		
	X	X-(定数)	X <sub>n-1</sub> -X <sub>n+1</sub>	Y	Y-(定数)	Y <sub>n-1</sub> -Y <sub>n+1</sub>	+	-		
9	-152,076.403	-152,070, 6.403	+1.949	-38,006.101	-38,000, 6.101	+0.447		11.890849	2.862141	
Ⅲ	-152,076.145	6.145	-2.207	-38,008.085	8.085	+1.537	17.843595		9.444865	
10	-152,074.196	4.196	+0.258	-38,007.638	7.638	-1.984		1.970604	8.324864	
							17.843595	13.861453	8.324864	12.307006
							3.982142			3.982142
								1/2 = 1.991071		
13	-152,028.861	-152,020, 8.861	-0.476	-37,997.252	-37,990, 7.252	+2.962	3.451952		26.246282	
Ⅳ	-152,025.937	5.937	-2.448	-37,996.582	6.582	-3.632	16.112736		21.563184	
14	-152,026.413	6.413	+2.924	-37,993.620	3.620	+0.670		10.584880	4.286710	
							19.564688	10.584880	21.563184	30.542992
							8.979808			8.979808
								1/2 = 4.489904		

計年月日  
算

計算者



検査者



B.NO. 70-1

各筆面積計算書

地番	算式	隅切	地積	摘要
	青江 486-1, 486-5		225 64	
	青江 487-1(10)		167 63	
	青江 488-1		224 26	
	青江 487-1(11)		224 83	
	青江 516-5		600 52	
	青江 516-1		606 52	
	青江 516-4		718 22	
	青江 517-6		142 76	
	青江 517-1		189 77	
	青江 490-4		47 18	
	青江 517-4		247 11	
	泥上11"		49 89	
	水路		124 92	
	隅切Ⅲ	1 89		
	隅切Ⅳ	4 42		
		計	5098 62	
		全体	5098 71	
		差	0 09	

52.12.13

# 面積計算書

I  
区

J.

ブロック

70-11

計算者

精算者

備考

青江津島線

点	①	②	③	④	⑤	⑥	③ × ⑤		② × ⑥	
	X	X - (定数)	X <sub>n-1</sub> - X <sub>n+1</sub>	Y	Y - (定数)	Y <sub>n-1</sub> - Y <sub>n+1</sub>	+	-	+	-
I	<sup>-152</sup> 042.908	- 3.908	- 31.198	<sup>-37</sup> 890.987	- 10.987	- 26.245	342.97242			76.32046
I'	044.649	- 4.649	<del>1.741</del> <sup>+ 32.937</sup> - 1.741	880.111	- 0.111	+ 15.369		- 2.65629		21.45048
BC	075.847	- 25.847	- 1.741	906.356	- 26.356	+ 10.896	46.825796			389.27197
		2769					322.65821	2.65629		461.22541
		4.607					325.10199		285.10199	
								192.5099		
								192.50 m <sup>2</sup>		

134.10 m

58.40 m

土地計算書

$192.50 - 58.40 = 134.10 \text{ m}^2$

松島

$\therefore 17.920.12 - 134.10$

$= 17,786.02 \text{ m}^2 - 30 \frac{2}{5} \text{畝}$