

BLOCK NO. 17

街区計算

街区略図

工区

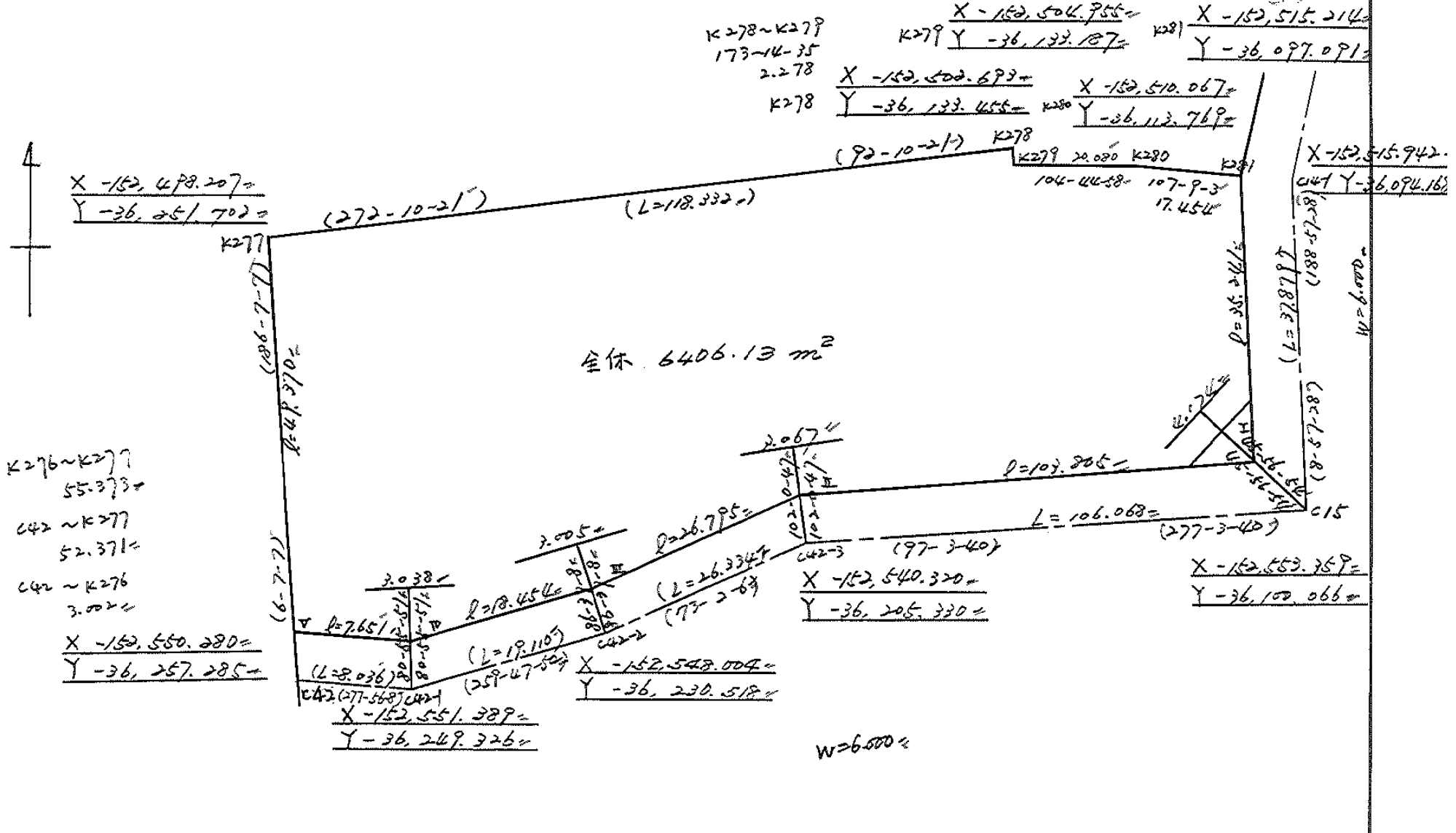
2

ブロック

17

記入者

点検者



面積計算書

工区

2

ブロック

17

計算者



精算者



備考

全体

点	①	②	③	④	⑤	⑥	③ × ⑤		② × ⑥	
	X	X-(定数)	X _{n-1} -X _{n+1}	Y	Y-(定数)	Y _{n-1} -Y _{n+1}	+	-	+	-
I	-152,550.025	-152,450 100,025	+22.050	-36,102.577	36,090 12,577	+108.504		277.322850		10253.112600
II	-152,537.264	87,264	-4.942	-36,205.595	115,595	+128.647	571.270490			11,226.251808
III	-152,545.083	95,083	+11.088	-36,231.224	141,224	+43.791		1565.891712		4163.779653
IV	-152,548.752	98,352	+2.213	-36,249.386	159,386	+25.740		352.721218		2531.580480
V	-152,547.276	97,296	-50.145	-36,256.964	166,964	+2.316	8.372,409780			225.337536
K277	-152,498.207	48,207	-44.603	-36,251.702	161,702	-123.509	7.212.394306		5.953.978263	
K278	-152,502.697	52,693	+6.748	-36,133.455	43,455	-118.515		293.224340	6,244.910895	
K279	-152,504.955	54,955	+7.374	-36,133.187	43,187	-19.686		318.460938	10,81.844130	
K280	-152,510.067	60,067	+10.259	-36,112.769	23,769	-36.096		242.846171	21,08.178432	
K281	-152,515.214	65,214	+39.958	-36,097.091	7,091	-11.192		282.342178	729.875088	
							16,156.074576	3,224.219407	16,178.806908	29,000.062077
							12,821.255169			12,821.255169
									1/2 = 6,410.6275845	
										6410.62-4.49 = 6406.13

面地計算



画地略図

工区

2

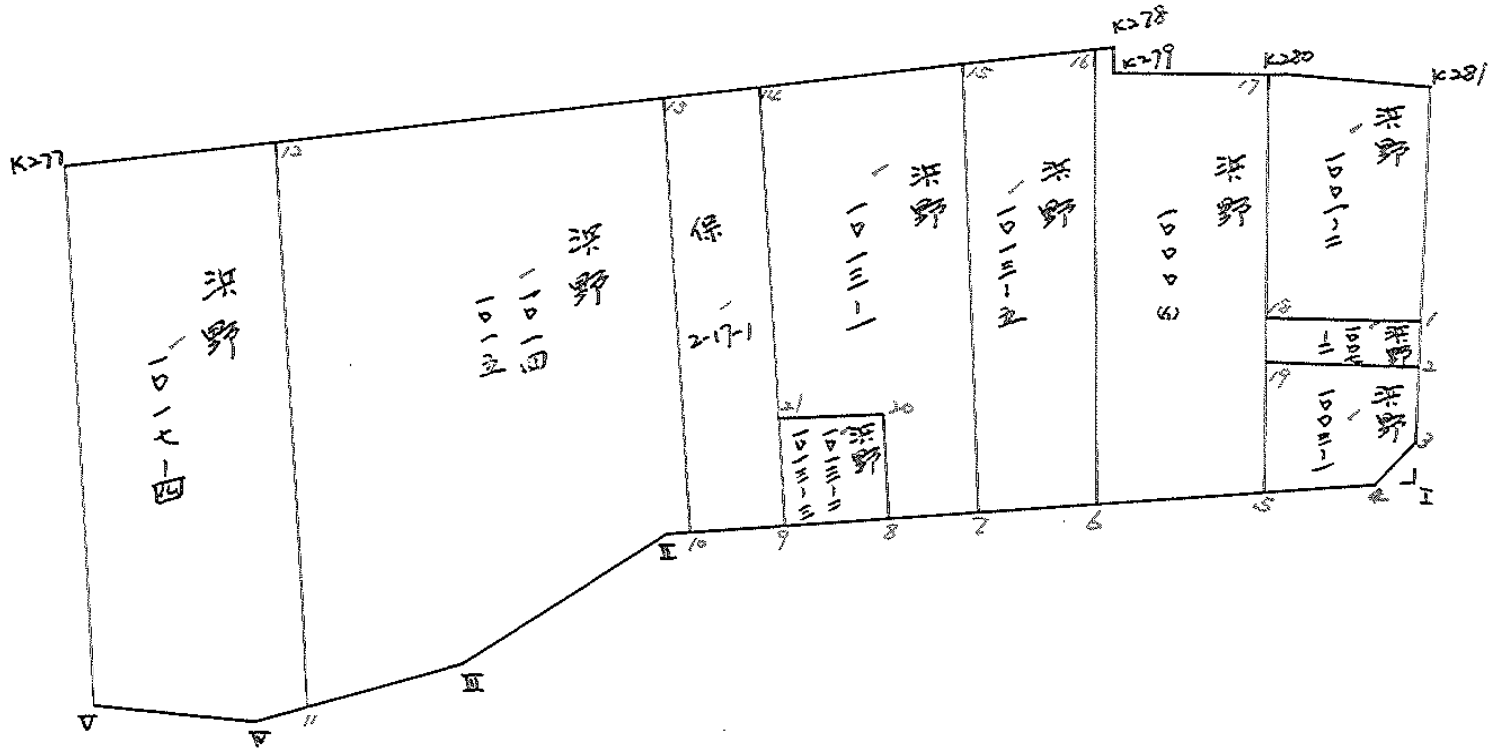
ブロック

17

記入者



点検者



面積計算書										
	①	②	③	④	⑤	⑥	③ × ⑤	② × ⑤	② × ⑥	
点	X	X-(定数)	X _{n-1} -X _{n+1}	Y	Y-(定数)	Y _{n-1} -Y _{n+1}	+	-	+	-
		-152,500			-36,090					
K.281	-152,515.214	15.214	+23.138	-36,097.091	7.091	-13.843		164.071558	210.607602	
1	-152,533.205	33.205	+15.793	-36,099.926	9.926	+22.255		146.261318		728.977275
18	-152,531.007	31.007	-23.904	-36,119.346	29.346	+16.764	71.426786			519.491278
17	-152,509.301	9.301	-20.940	-36,116.680	26.680	-5.477	558.679200		41.871677	
K.280	-152,510.067	10.067	+5.913	-36,113.769	23.769	-19.589		140.546097	197.202463	
								1260.165984	461.378973	459.681542
										1258.468553
										798.787011
										1/2 = 399.3935055
		-152,530			-36,090					
1	-152,533.205	3.205	+6.938	-36,099.926	7.926	-18.673		62.866588	57.846765	
2	-152,537.945	7.945	+2.567	-36,100.673	10.673	+20.006		27.397591		158.947670
19	-152,525.772	5.772	-6.938	-36,119.932	29.932	+18.673	207.668246			107.780556
18	-152,531.007	1.007	-2.567	-36,119.346	29.346	-20.006	75.331182		20.146042	
										222.999398
										76.264179
										79.99307
										266.728226
										186.735219
										1/2 = 93.3676095

面積計算書						工区	ブロック	計算者	精算者	備考
						2	17			浜野 1003-1
点	①	②	③	④	⑤	⑥	③ × ⑤		② × ⑥	
	X	X-(定数)	X _{n-1} -X _{n+1}	Y	Y-(定数)	Y _{n-1} -Y _{n+1}	+	-	+	-
2	152, 537.945	152,500 37.945	+ 11.290	36, 100.673	36,100 0.673	- 17.922		7.598170	676.255770	
3	547.062	47.062	+ 11.711	102.110	2.110	+ 4.881		22.710210	229.707622	
4	547.656	47.656	+ 0.632	105.554	5.554	+ 19.286		3.510122	957.665616	
5	547.694	47.694	- 13.984	121.396	21.396	+ 14.378	277.062064		685.744.332	
19	535.772	35.772	- 19.749	119.932	19.932	- 20.723	194.317068	25.515112	741303156	
							471.377132	33.918502	1417.558746	1873.119570
							155560674		155560674	
								1/2 = 227780312		

面積計算書		工区	ブロック	計算者	精算者	備考		
		2	17			次野 1000(1)		
点	① X	② X-(定数)	③ X _{n-1} -X _{n+1}	④ Y	⑤ Y-(定数)	⑥ Y _{n-1} -Y _{n+1}	③ × ⑤	② × ⑥
17	-152, 507.301	-122,500 9.301	+42.739	-36, 116.680	-36,110 6.680	-11.791	224.496420	109.668091
5	547.694	47.694	+35.839	121.396	11.396	+25.336	408.421244	1208.375184
6	545.140	45.140	-45.129	142.016	32.016	+15.428	1444.250064	696.419920
16	502.565	2.465	-42.447	136.824	26.824	-8.561	1138.598328	21.958965
K.278	502.693	2.693	+2.790	133.455	23.455	-3.637	56.067450	9.794441
K.279	504.955	4.955	+6.608	133.187	23.187	-16.775	143.219696	83.120125
							2583.448392	903.194910
							1680.253482	224.541622
								1904.795104
								1680.253482
								Y ₂ = 840.126741

面積計算書		工区	ブロック	計算者	精算者	備考		
		2	17			浪野 1013-5, 1013-1		
点	①	②	③	④	⑤	⑥	③ × ⑤	② × ⑥
	X	X-(定数)	X _{n-1} -X _{n+1}	Y	Y-(定数)	Y _{n-1} -Y _{n+1}	+	-
	-152,	-152,500		-36,	-36,100			
16	507,565	2,565+	43373	136,824	36,824-	14,522		1575.326152
6	545,140	45,140+	40,159	142,016	42,016+	24,696		37,248930
7	542,724	42,724-	43373	161,520	61,520+	14,522	2665.230760	1114.777440
15	501,917	1,917-	40,159	156,538	56,538-	24,696	2270.507542	620.437728
							1735.740502	1653.073806
							3282.646696	92.121562
								1735.215268
								1653.073806
								1/2 = 926.546903
	-152,	152,500		-36,	-36,100			
15	501,917	1,917+	41,973	156,538	6,538-	23,114		274.417474
7	542,724	42,724+	39,359	161,520	11,520+	17,474		1179.8138
8	541,176	41,176-	16336	174,012	24,012+	11,056	392.260032	746.559176
20	526,388	26,388-	16,424	172,576	22,576+	13,546	370.798224	153.415680
21	524,757	24,757-	25,637	187,558	37,558+	12,058	762.874446	746.559176
14	500,751	0,751-	22,935	184,634	34,634-	31,020	774.330790	153.241856
								357.451248
								272.459616
								23.296020
								2520.253472
								727.235154
								65.294658
								1287.712496
								1792.418338
								1792.418338
								1/2 = 896.209169

面積計算書						工区	ブロック	計算者	精算者	備考
	①	②	③	④	⑤	⑥	⑦	⑧	⑨	⑩
点	X	X-(定数)	X _{n-1} -X _{n+1}	Y	Y-(定数)	Y _{n-1} -Y _{n+1}	+	-	+	-
	-152,	-152,500		-36,	-36,170					
20	526388,	26.388,	16.424,	172.576,	2.576,	13.546		42.308224	357.451848	
8	541.176,	41.176,	12.891,	174.012,	4.012,	16.751		51.712692		689.737176
9	539.279,	39.279,	16.424,	189.327,	19.327,	13.546	317.426648			532.073334
21	524.752,	24.752,	12.891,	187.558,	17.558,	16.751	226.340178		44.620752	
							583.766826	94.026916	772.072600	1221.912510
							467.737910			447.737910
								1/2 = 224.867955		
14	-152,	-152,500		-36,	-36,180					
	500.751,	0.751,	38.950	184.634,	4.634,	6.439		180.574300	4835.689	
9	539.279,	39.279,	37.157	189.327,	9.327,	15.760		346.563339		619.037020
10	537.908,	37.908,	38.950	200.394,	20.394,	6.439	774.346300			244.089512
13	500.329,	0.329,	37.157	195.766,	15.766,	15.760	585.917262		5.185020	
							1380.163562	527.457639	10.020727	863.126652
							823.165923			853.105923
								1/2 = 426.5529615		

面積計算書

工区 2

ブロック 17

計算者



精算者



備考

浜野 1014, 1015, 1017-4

点	①	②	③	④	⑤	⑥	③	×	⑤	②	×	⑤
	X	X-(定数)	X _{n-1} -X _{n+1}	Y	Y-(定数)	Y _{n-1} -Y _{n+1}	+	-	+	-		
	-152,	-152, 490		-36,	-36, 190							
13	500.327	10.329	+ 39.148	195.766	5.766	- 36.739		225.727 368		379.477 131		
10	537.908	47.908	+ 36.935	200.394	10.394	+ 9.829		383.902 390				420.887 732
II	537.264	47.264	+ 7.175	205.595	15.595	+ 30.830		115.894 125				1457.149 120
III	545.083	45.083	+ 9.945	231.224	41.224	+ 37.495		410.384 920				2065.337 085
11	547.219	47.219	- 46.323	243.090	43.090	+ 5.909	2469.288 070					338.107 071
12	498.760	8.760	- 46.890	237.133	47.133	- 47.324	2210.066 370			414.548 240		
							4669.354 440	113d.902 803		794.075 371		4331.481 008
							3537.445 637					3539.445 637
										Y ₂ = 1768.722 8185		
12	-152,	-152, 490		-36,	-36, 230							
12	498.760	8.760	+ 49.012	237.133	7.133	- 8.612		349.602 696		75.441 120		
11	547.219	47.219	+ 49.592	243.090	13.090	+ 12.243		649.159 280				701.104 407
IV	548.352	48.352	+ 0.077	247.386	19.386	+ 13.874		1.497 722				809.575 648
V	547.296	47.296	- 40.145	256.964	26.964	+ 2.316	1252.109 980					132.697 436
K.277	498.207	8.207	- 48.536	251.702	21.702	- 19.831	1053.328 272			162.753 017		
							2405.438 062	1000.254 598		238.194 137		1643.377 591
							1405.183 454					1405.183 454
										Y ₂ = 702.591 727		

座標法面積計算 (1014-1)

測点	X	Y	(+) Σ X _i Y _i	(-) Σ Y _i X _i
	-152 ^K	-36 ^K	+72 ^K	420.000
B	499.683	212.804		
	+ 41.333		- 10.698	442.180434
P	541.016	217.894		
	+ 4.067		- 29.118	118.422906
III	545.083	231.224		
	+ 2.136		- 54.314	116.014704
II	547.219	243.090		
	- 48.459		- 60.223	2918.346357
12	498.760	237.133		
	+ 0.923		- 29.937	27.631851
B	499.683	212.804		
			2918.346357	704.249895
			2214.096462	
計算者			1107.048231	1107.06
点検者			334.882	

面積法地籍計算 (1014-2)

序號	X	Y		
	-152 ^K	-36 ^K	+72 ^K 380.000	
13	500.329	195.766		
	+37.579	-16.160		607.276640
10	537.908	200.394		
	-0.644	-25.989		16.736916
II	537.264	205.595		
	+1.122	-34.868		39.121896
C	538.386	209.273		
	-38.390	-33.818		1298.273020
A	499.996	204.545		
	+0.333	-20.311		6.763563
13	500.329	195.766		
				1315.009936
				653.162099
				661.847837
				330.9239185
				100.104
前項款				
合計				

國產法面積計算 (1014-3)

X	Y	Z
-152 ^K	-36 + 72 ^K 400.000	
A 499.996	204.545	
+ 38.390	- 13.818	530.473020
C 538.386	209.273	
+ 2.630	- 27.167	71.449240
D 541.016	217.294	
- 41.333	- 30.698	1268.840434
B 499.683	212.804	
+ 0.313	- 17.349	5.430237
A 499.996	204.545	
		1268.840434 607.352467 661.487967 380.7439835 / 100.050

面積計算書

工
区

2

ブ
ロ
ック

17

計
算
者



精
算
者



備
考

陽印 I

点	①	②	③	④	⑤	⑥	③ × ⑤		② × ⑥	
	X	X-(定数)	X _{n-1} -X _{n+1}	Y	Y-(定数)	Y _{n-1} -Y _{n+1}	+	-	+	-
3	-152,547.062	-152,540 7.062	+0.369	-36,102.110	-36,100 2.110	-2.977		0.778590	21.023574	
I	-152,550.025	10.025	+2.594	-36,102.577	2.577	+3.444		6.684738		34.526100
4	-152,549.656	9.656	-2.963	-36,105.554	5.554	-0.467	16.456502		4.509352	
							16.456502	7.463328	25.532926	34.526100
							8.993174			8.993174
								1/2=4.496587		

計年月日

計算者



検査者



B.NO.

各筆面積計算書

地番	算式	隅切	地積	摘要
浜野	1001-2		399.39	
浜野	1007-2		93.36	
浜野	1003-1		227.78	
浜野	1000-4		840.12	
浜野	1013-5		826.54	
浜野	1013-1		896.20	
浜野	1013-2, -3		224.86	
保	2-17-1		426.55	
浜野	1014, 1015		1768.72	
浜野	1017-4		702.57	
隅切 I		447		
計			6410.60	
全体			6410.62	
			0.02	