

BLOCK NO. 14-1

街区計算

街区略図

工区

2

ブロック 14-1

記入者



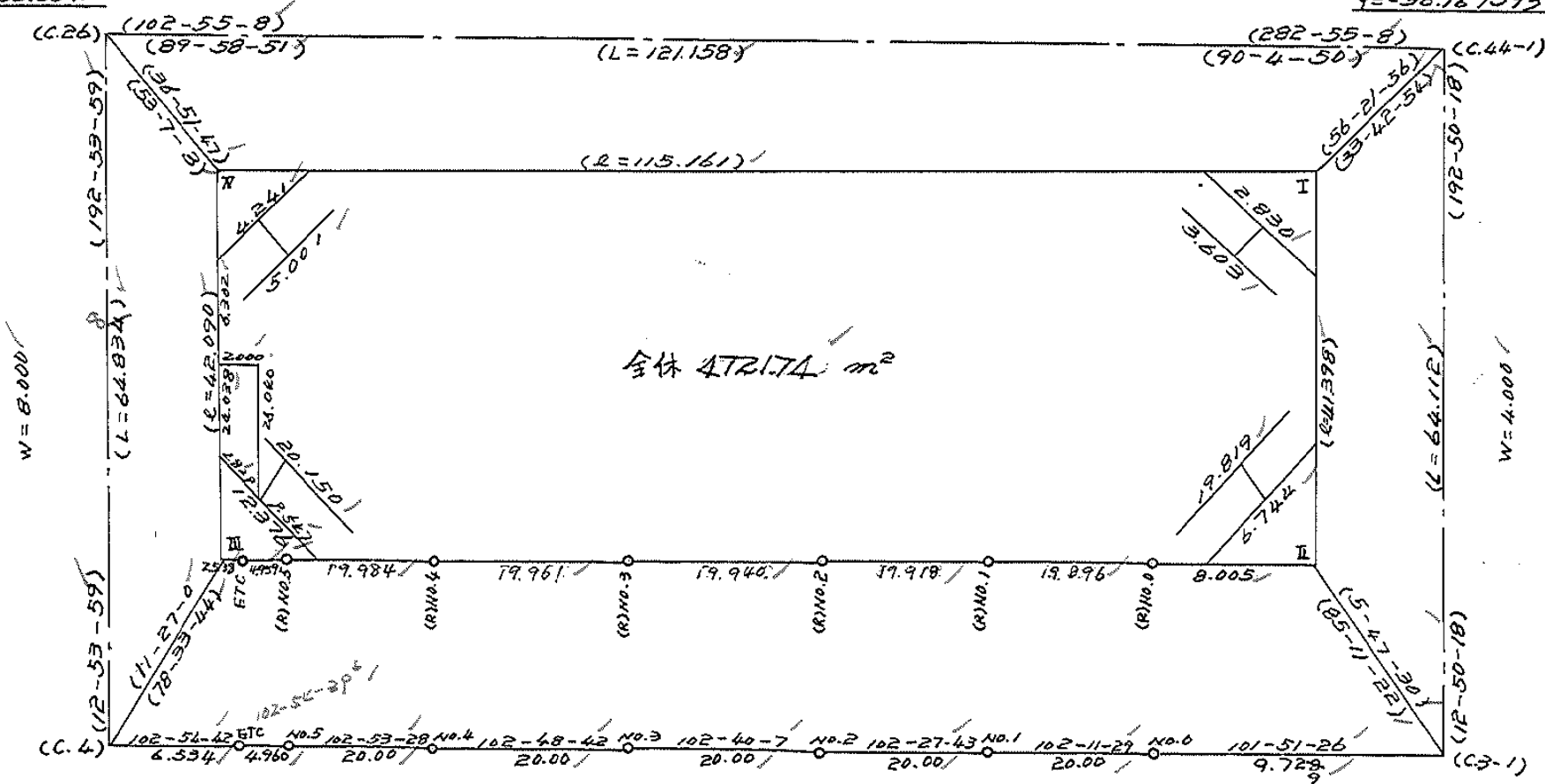
点検者



X=152.608.567
Y=36.285.684

W=6.000

X=152.635.654
Y=36.167.593



全体 472.74 m²

X=152.671.773
Y=36.300.153

W=39.500

X=152.698.163
Y=36.181.837

画地計算

面積計算書

工区

2

ブロック

14-1

計算者



精算者



備考

福富

429-1
431-6

点	①	②	③	④	⑤	⑥	③ × ⑤	② × ⑥		
	X	X-(定数)	X _{n-1} -X _{n+1}	Y	Y-(定数)	Y _{n-1} -Y _{n+1}	+	-		
1	-152, 640.081	-152.630 10.081	+10.190	-36, 170.653	-36.170 0.653	+0.272		6.644070	2.742032	
2	647.874	17.874	+5.640	172.430	2.430	+11.137		13.705200	189.067738	
34	645.721	15.721	-11.887	181.790	11.790	+7.127	140.147732		112.043467	
24	635.987	5.987	-8.037	179.557	9.557	-9.632	76.209609		87.666724	
25	637.684	7.684	+4.094	172.158	2.158	-8.904		8.834242	68.418336	
							216.957339	29.194122	126.024120	313.848339
							187.763217			187.763217
										1/2 = 93.8816084
2	-152, 647.874	-152.640 7.874	+13.100	-36, 172.430	-36.170 2.430	-7.830		31.833000	61.653420	
3	658.610	18.610	+7.856	174.876	4.876	+12.620		38.305256	34.858200	
26	655.730	15.730	-13.100	185.050	15.050	+7.830	197.154000		123.165900	
35	645.510	5.510	-7.856	182.706	12.706	-12.620	99.818336		69.436200	
							296.973326	70.138256	131.129620	359.024100
							226.834680			226.834680
										1/2 = 113.417240

面積計算書

工区

2

ブロック

14-1

計算者

精算者

備考

福富 431-2
~~保 14-1~~
~~波野 634-1(R)~~

点	①	②	③	④	⑤	⑥	③	⑤	⑥	
	X	X-(定数)	X _{n-1} -X _{n+1}	Y	Y-(定数)	Y _{n-1} -Y _{n+1}	+	-	+ -	
3	-152, 658.610	-152.650 8.610	+13.920	-36, 174.876	-36.170 4.876	-12.526		67.873.720	107.848.860	
4	668.356	18.356	+6.326	177.098	7.098	+17.142		44.901.948	314.658.542	
31	664.936	14.936	-13.920	192.018	22.018	+12.526	306.490.560		187.088.336	
27	654.436	4.436	-6.326	189.624	19.624	-17.142	124.141.624		76.041.912	
							430.631.924	112.775.868	182.890.772	501.746.888
							317.856.116			317.856.116
										1/2 = 158.928.058
4	-152, 668.356	-152.660 8.356	+7.587	-36, 177.098	-36.170 7.098	-7.818		43.842.426	64.327.208	
5	673.863	13.863	+9.161	178.352	8.352	+6.958		76.412.672	96.458.744	
6	677.517	17.517	+2.985	184.056	14.056	+8.890		41.957.160	154.726.130	
(P) No.0	676.848	16.848	-0.945	187.242	17.242	+4.462	16.293.690		74.175.776	
7	676.572	16.572	-10.572	188.518	18.518	-1.072	194.772.296		17.765.184	
29	666.276	6.276	-8.216	186.170	16.170	-11.420	132.252.720		71.671.920	
							344.918.706	172.322.358	154.764.312	327.260.660
							172.596.348			172.596.348

面積計算書

工区

2

ブロック

14-1

計算者



精算者



備考

福富

431-4

42P-2

点	①	②	③	④	⑤	⑥	③ × ⑤	② × ⑥		
	X	X-(定数)	X _{n-1} -X _{n+1}	Y	Y-(定数)	Y _{n-1} -Y _{n+1}	+	-		
7	-152, 676.572	-152.660 16.576	+9.874	-36, 188.518	-36.180 8.518	+4.300		84.106732	71.276800	
8	676.150	16.150	-10.746	190.472	10.472	-0.399	112.532112		6.443880	
30	665.830	5.830	-9.874	188.119	8.119	-4.300	80.167006		25.069000	
29	666.276	6.276	+10.746	186.170	6.172	+0.399		66.324312	2.504124	
							192.699118	150.431044	31.512850	73.780924
							42.268074		42.268074	
								1/2 = 21.134037		
8	-152, 676.150	-152.660 16.150	+9.475	-36, 190.472	-36.180 10.472	+6.263		99.224200	101.147480	
9	675.305	15.305	-11.214	194.382	14.382	+1.546	101.279702		23.661520	
31	664.936	4.936	-9.475	192.018	12.018	-6.263	113.270450		30.914168	
30	665.830	5.830	+11.214	188.119	8.119	-1.546		91.046466	9.213120	
							275.150298	190.262666	39.727348	124.808980
							24.821632		24.821632	
								1/2 = 42.440816		

面積計算書

工区 2

ブロック

14-1

計算者



計算者



備考

福島 425, 426-1
" 426-2

点	①	②	③	④	⑤	⑥	③ ×	⑤	② ×	⑥
	X	X-(定数)	X _{n-1} -X _{n+1}	Y	Y-(定数)	Y _{n-1} -Y _{n+1}	+	-	+	-
9	-152, 675.305	-152.640 35.305	+18.210	-36, 194.382	-36.180 14.382	+17.065		261.896 220		602.479 825
(A) No.1	672.646	32.646	-22.717	206.689	26.689	+7.714	606.294 013			251.831 244
33	652.588	12.588	-23.629	202.096	22.096	+11.014	522.106 384			128.644 227
32	649.017	9.017	-4.526	217.703	37.703	+15.388	170.643 778			128.753 591
28	648.062	8.062	+5.419	217.484	37.484	-28.079		203.125 796	226.372 898	
27	654.436	14.436	+27.243	189.624	9.624	-23.102		262.186 632	333.500 472	
								1299.044 175	727.208 648	559.873 370
								571.825 527		1121.708 897
										571.825 527
										1/2 = 284.917 7635 ✓
(A) No.1	-152, 672.646	-152.640 32.646	+16.603	-36, 206.689	-36.200 6.689	+20.226		111.057 467		660.297 996
11	669.191	29.191	-23.629	222.322	22.322	+11.014	527.446 538			221.509 674
32	649.017	9.017	-16.603	217.703	17.703	-20.226	293.922 909		182.377 242	
33	652.588	12.588	+23.629	202.096	2.096	-11.014		49.526 384	128.644 227	
								821.369 447	160.583 821	321.022 074
										981.207 670
								660.785 596		660.785 596
										1/2 = 330.392 798 ✓

面積計算書

工区

2

ブロック

14-1

計算者

精算者

備考

福富 427, 428
" 423-1

点	①	②	③	④	⑤	⑥	③ ×	⑤	② ×	⑥	
	X	X-(定数)	X _{n-1} -X _{n+1}	Y	Y-(定数)	Y _{n-1} -Y _{n+1}	+	-	+	-	
11	-152, 66P.1P1	-152.620 49.191	+40.024	-36, 222.322	-36.210 12.322	+13.173		493.175728		647.993043	
(R) No.2	668.348	48.348	-3.561	226.138	16.138	+15.908	57.467418			769.119984	
12	665.630	48.630	43.664	238.230	28.230	+2.698	1232.636720			123.109740	
1P	624.684	4.684	-37.306	228.836	18.836	-25.265	702.695816		118.341260		
20	628.324	8.324	+44.507	212.965	2.965	-6.514		131.963255	54.222536		
								1992.797956	625.138983	172.563796	1540.222767
								1367.658971			1367.658971
								1/2 = 683.8294855 ✓			
12	-152, 665.630	-152.610 55.630	+39.291	-36, 238.230	-36.220 18.230	+16.757		716.274930		932.191910	
(R) No.3	663.975	53.975	-4.838	245.593	25.593	+21.359	123.818934			1152.852025	
13	660.792	50.792	-44.186	259.589	39.589	+4.587	1749.219554			232.982904	
18	619.789	9.789	-36.108	250.180	30.180	-30.753	1089.739440		301.041117		
1P	624.684	14.684	+45.841	228.836	8.836	-11.950		405.051076	175.473800		
								2962.837928	1121.326006	476.514917	2318.026839
								1841.511922			1841.511922
								1/2 = 920.755961 ✓			

面積計算書

工区 2

ブロック

14-1

計算者



精算者



備考

福島 423-2

~~420-6~~

点	①	②	③	④	⑤	⑥	③ × ⑤	② × ⑥
	X	X-(定数)	X _{n-1} -X _{n+1}	Y	Y-(定数)	Y _{n-1} -Y _{n+1}	+ -	+ -
13	-152, 660.792	-152.600 60.792	+39.760	-36, 259.589	-36.250 9.589	+14.877		381.258 640
(R) No.4	659.549	59.549	-5.422	265.057	15.057	+23.727	81.639 054	1412.919 123
14	655.370	55.370	-12.266	283.316	33.316	+23.332	408.654 056	1291.292 840
10	647.283	47.283	-33.471	288.389	38.389	-0.736	124.918 219	34.800 288
40	621.899	21.899	-25.830	282.580	32.580	-3.859	241.441 400	24.508 241
39	621.453	21.453	-6.589	284.530	34.530	+0.544	227.418 170	11.670 432
16	615.310	15.310	-8.396	283.124	33.124	-4.999	278.109 104	76.434 690
17	613.057	13.057	+4.479	279.531	29.531	-32.944	132.269 349	420.149 808
18	619.789	19.789	+47.735	250.180	0.180	-19.942	8.592 300	394.632 238
							3122.380 003	422.150 289
							2600.259 714	1020.625 265
								3620.884 979
								2600.259 714
								1/2 = 1300.129 857
21	-152, 634.152	-152.630 4.152	-10.205	-36, 187.558	-36.180 7.558	-4.212	77.129 380	17.488 224
22	634.558	4.558	+11.047	185.787	5.787	+0.666 0.670	63.928 989	2.035 628
37	645.199	15.199	+10.285	188.228	8.228	+4.212	83.966 740	64.018 188
38	644.793	14.793	-11.047	189.999	9.999	-0.666	110.458 943	9.242 138
							127.482 343	27.340 362
							147.895 729	61.642 216

面積計算書

工区

2

ブロック

14-1

計算者



精算者



備考

水路
福富 430-6

点	①	②	③	④	⑤	⑥	③ ×	⑤	② ×	⑥
	X	X-(定数)	X _{n-1} -X _{n+1}	Y	Y-(定数)	Y _{n-1} -Y _{n+1}	+	-	+	-
39	-152, 621.453	-152.620 1.453	-22.987	-36, 284.530	-36.280 4.530	-7.313	104.137110		10.625789	
40	621.899	1.899	+25.830	282.580	2.580	+3.859		66.641400		7.328241
10	647.283	27.283	+22.987	288.389	8.389	+7.313		192.837943		199.520579
15	644.886	24.886	-25.830	289.893	9.893	-3.859	255.536190		96.035074	
							359.667300	259.479343	106.660863	206.848820
							-100.187957			100.187957
							1/2 = 50.0939785			
21	-152, 624.152	-152.630 4.152	-10.235	-36, 187.558	-36.180 7.558	-4.212	97.356130		17.488224	
22	624.558	4.558	+11.047	185.787	5.787	+0.670		63.928389		3.053860
37	645.199	15.199	+10.235	188.228	8.228	+4.212		84.213580		64.018188
38	644.793	14.793	-11.047	189.999	9.999	-0.670	110.458983		9.911310	
							187.815683	148.142569	27.399534	67.072048
							39.672514			39.672514
							1/2 = 19.836257			

面積計算書

工区

2

ブロック

14-1

計算者



精算者



備考

福富 430-1

点	①	②	③	④	⑤	⑥	③ ×	⑤	② ×	⑥
	X -152	X-(定数) -152.620	X _{n-1} -X _{n+1}	Y -36	Y-(定数) -36.180	Y _{n-1} -Y _{n+1}	+	-	+	-
20	628.324	8.324 ✓	-13.910	212.965	32.965 ✓	-29.926	458.543150		249.104024	
21	634.152	14.152 ✓	+16.469	187.558	7.558 ✓	-22.966		124.472702	328.014832	
38	644.793	24.793 ✓	+12.266	189.999	9.999 ✓	-4.644		122.647734	115.138692	
36	646.418	26.418 ✓	+10.937	182.914	2.914 ✓	-4.949		31.870418	130.742682	
26	655.730	35.730 ✓	+8.018	185.050	5.050 ✓	+6.710		40.490900		239.748300
27	654.436	34.436 ✓	-7.668	189.624	9.624 ✓	+32.434	73.796832			1116.897224
28	648.062	28.062 ✓	-26.112	217.484	37.484 ✓	+23.341	978.782208			654.995142
							1511.122190	319.481754	820.040230	2011.640666
							1191.640436			1191.640436 ✓
							1/2 = 595.820218 ✓			

面積計算書

工区

2

ブロック

14-1

計算者

精算者



備考

福富

430-5

11

430-4

点	①	②	③	④	⑤	⑥	③ × ⑤	② × ⑥
	X	X-(定数)	X _{n-1} -X _{n+1}	Y	Y-(定数)	Y _{n-1} -Y _{n+1}	+ -	+ -
22	-152, 634.558	-152.630 4.558	-9.422	-36, 185.787	-36.180 5.787	-7.755	54.525114	35.347290
23	635.777	5.777	+11.860	180.473	0.473	-2.873	5.609780	16.597324
36	646.418	16.418	+9.422	182.914	2.914	+7.755	27.455708	127.321590
37	645.199	15.199	-11.860	188.228	8.228	+2.873	97.584080	43.666727
							152.109194	33.065488
							119.043706	51.944611
								170.988317
								119.043706
							1/2 = 59.521853	
23	-152, 635.777	-152.630 5.777	-9.523	-36, 180.473	-36.170 10.473	-3.149	99.734379	18.191773
24	635.987	5.987	+9.944	179.557	9.557	+1.317	95.034808	7.884879
34	645.721	15.721	+9.523	181.790	11.790	+3.149	112.276170	49.505429
35	645.510	15.510	-9.944	182.706	12.706	-1.317	126.348464	20.426670
							229.082843	207.310978
							18.771865	38.618443
								57.390308
								18.771865
							1/2 = 93859325	

面積計算書

工区

2

ブロック

14-1

計算者

計算者

備考

図面 I, II

点	①	②	③	④	⑤	⑥	③	×	⑤	②	×	⑥
	X	X-(定数)	X _{n-1} -X _{n+1}	Y	Y-(定数)	Y _{n-1} -Y _{n+1}	+		-	+		-
I	-152 638.131	152630 8.131	+ 2.397	-36. 170.209	36170 0.209	- 1.505			0.500973	12.237155		
1	640.081	10.081	- 0.447	170.653	0.653	+ 1.949	0.291891					19.647869
25	637.684	7.684	- 1.950	172.158	2.158	- 0.444	4.208100			3.411696		
							4.497771		0.500973	15.648851		19.647869
							3.979018					3.979018
									1/2 = 1.999509			
5	-152 673.863	152670 3.863	+ 0.977	-36 178.352	36170 8.352	- 4.648			8.159904	17.755224		
II	678.494	8.494	+ 3.654	179.408	9.408	+ 5.704			3.4376832			48.449776
6	677.517	7.517	- 4.631	184.056	14.056	- 1.056	65.093336			7.937952		
							65.093336		11.536736	26.893176		48.449776
							22.556600					22.556600
									1/2 = 11.278300			

面積計算書

工区 2

ブロック 14-1

計算者

精算者



備考

附功Ⅲ-N

点	①	②	③	④	⑤	⑥	③	×	⑤	②	×	⑥
	X	X-(定数)	X _{n-1} -X _{n+1}	Y	Y-(定数)	Y _{n-1} -Y _{n+1}	+	-	+	-		
14	-152.470	152640		-36.	36280							
(R)	635.370	15.370	10.204	283.316	3.316	- 5.356			33.836464	92321720		
No.5	655.090	15.090	1.388	284.537	4.537	+	6.055	6.297356				91369750
(R)	633.982	13.982	1.675	289.374	9.374	+	7.308	15.696425				102.180456
ETC	653.415	13.415	9.096	291.845	11.845	+	0.522	107.742120				7.002630
Ⅲ	644.886	4.886	1.955	289.893	9.893	-	8.529	19.340815	41572694			
15									129.735901	53.177279	123.994414	200.553036
									76.558622			76.558622
									1/2 = 38.279311			
N	-152	152610		-36	36270							
	612.386	2.386	2.253	282.455	12.455	- 3.593	29.061115		8.572898			
17	613.057	3.057	2.924	279.531	9.531	+	0.669	27.868644				2005133
16	615.310	5.310	0.671	283.124	13.124	+	2.924	8.806204				15.526440
									36.867319	27.868644	8.572898	17.571573
									8.998675			8.998675
									1/2 = 4.4993375			

計年
月
算日

計
算
者



檢
查
者



B.NO. 14-1 各筆面積計算書

地番	算式	隅切	地積	摘要
福富	429-1		93.88	
福富	431-6		113.41	
福富	431-2, -5		158.92	
保	汝野 634-1(14) 2-14=1		86.29	
福富	431-4		21.13	
福富	429-2		42.44	
福富	425, 426-1		285.91	
福富	426-2		330.39	
福富	427, 428		683.82	
福富	423-1		920.75	
福富	423-2		1300.12	
福富	430-1		595.82	
福富	430-6		19.83	
福富	430-5		59.52	
福富	430-4		9.38	
隅切 I		1.99		
隅切 II		11.27		
隅切 III		38.27		
隅切 IV		4.19		
水路			50.09	
計			4827.72	
全株			4827.85	
		差	0.13	