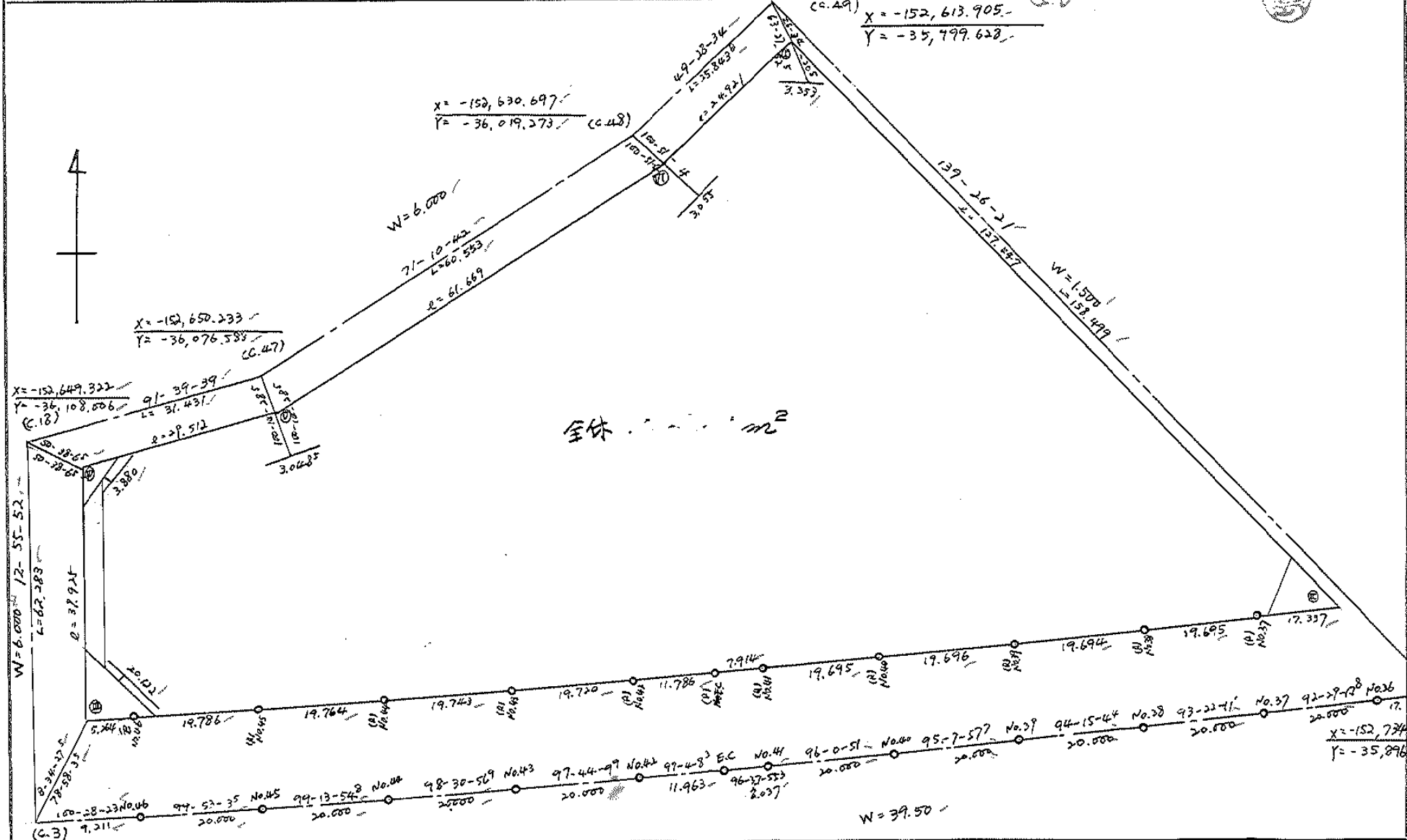


BLOCK NO. 2

街区計算

画地略図	工区	ズ	ブロック	ズ	記入者	点検者
------	----	---	------	---	-----	-----



$X = -152,630.697$
 $Y = -36,019.273$ (C.48)

(C.49)
 $X = -152,613.905$
 $Y = -35,799.628$

$X = -152,650.233$
 $Y = -36,076.583$ (C.47)

$X = -152,649.322$
 $Y = -36,108.606$ (C.18)

全体... m²

$X = -152,724.321$
 $Y = -35,876.565$

$X = -152,710.025$

面積計算書

点	①		②		③		④		⑤		⑥		⑦		⑧		⑨		⑩		
	X	X-(定数)	X _{n-1} -X _{n+1}	Y	Y-(定数)	Y _{n-1} -Y _{n+1}	+	-	+	-	+	-	+	-	+	-	+	-	+	-	
I	-152,617.159	-152,600 17.159	+ 80.632	-35, 998.817	-35,900 98.817	- 101.817															
II	713.983	113.983	+ 96.054	915.944	15.944	- 65.553															
(A) No.37	713.213	113.213	- 1.728	933.264	33.264	+ 36.981															4186729953
(A) No.38	712,055	112,055	- 2.618	952.925	52.925	+ 39.301															4403.873555
(A) No.39	710,595	110,595	- 3.222	972,565	72,565	+ 39.257															4341.627915
(A) No.40	708,833	108,833	- 3.825	992,182	92,182	+ 39.204															4266688932
(A) No.41	706,770	106,770	- 2.977	^{-36,} 011,769	111,769	+ 27.448															2930.622960
(A) E. C	705,856	105,856	- 2.364	019,630	119,630	+ 19.557															2070.225792
(A) No.42	704,406	104,406	- 4.104	031,326	131,326	+ 31.237															3261.330222
(A) No.43	701,752	101,752	- 5.578	050,867	150,867	+ 39.066															3975.023632
(A) No.44	698,828	98,828	- 6.095	070,392	170,392	+ 39.033															3957.553324
(A) No.45	695,657	95,657	- 6.567	089,900	189,900	+ 39.000															3730.623000
(A) No.46	692,261	92,261	- 4.353	109,392	209,392	+ 24.668															2275.894308
III	691,304	91,304	- 39.869	^{-36,} 114,568	214,568	- 3.759															323.211736
IV	652,392	52,392	- 38.057	105,633	205,633	- 38.435															2013.686520
V	653,247	53,247	- 19.041	076,133	176,133	- 87.872															4678.920394
VI	633,351	33,351	- 36.088	017,761	117,761	- 77.316															2578565914

面積計算書

工
区

Σ

ブ
ロ
ック

Σ

計
算
者



精
算
者



備
考

全 体

点	① X	② X-(定数)	③ X _{n-1} -X _{n+1}	④ Y	⑤ Y-(定数)	⑥ Y _{n-1} -Y _{n+1}	③ ×	⑤	② ×	⑥	
							+	-	+	-	
							29966.120875	9499.297320	18833.370058	39300.213633	
							20466.823575			20466.823575	
								1/2 = 10233.4117875			
			全体	水路	Ⅱ	スミエ	Ⅳ	Ⅱ			
			$10233.41 - (44.69 + 38.33 + 4.41 + 60.15) = 10,085.83 -$								

画地計算

画地略図

工区

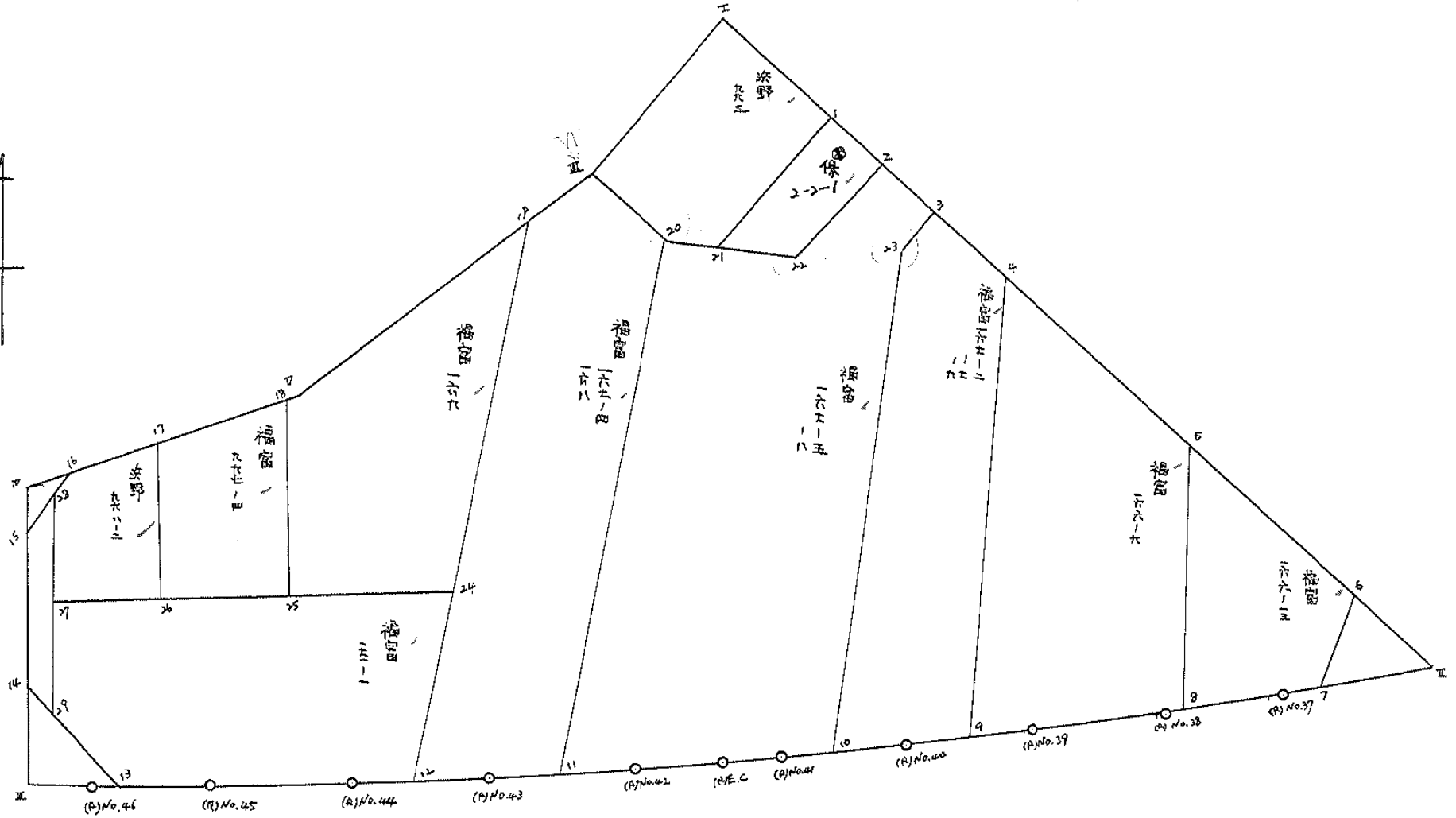
2

ブロック

2

記入者

点検者



面積計算書

工区

2

ブロック

2

計算者



精算者



備考

福富

166-13

166-9

点	① X	② X-(定数)	③ X _{n-1} -X _{n+1}	④ Y	⑤ Y-(定数)	⑥ Y _{n-1} -Y _{n+1}	③ × ⑤	② × ⑥
6	-152, 704.242	-152.680 24.242	+ 29.283	-35, 924.281	-35.920 4.281	- 12.713	125.360523	308.188546
7	713.412	33.412	+ 8.971	928.783	8.783	+ 8.983	78.792293	300.139996
(A) No.37	713.213	33.213	- 1.305	933.264	13.264	+ 23.263	17.309520	772.634019
8	712.107	32.107	- 29.084	952.046	32.046	+ 8.232	932.025266	264.304824
5	684.129	4.129	- 7.865	941.496	21.496	- 27.765	169.066040	114.641685
							1118.401424	422.830231
							914.248608	1,337.078839
							$\frac{1}{2} = 457.124304$	914.248608
8	-152, 712.107	-152.650 62.107	+ 27.926	-35, 952.046	-35.940 12.046	+ 11.429	336.396596	709.820903
(R) No.38	712.055	62.055	- 1.512	952.925	12.925	+ 20.519	19.542600	1,273.306545
(R) No.39	710.595	60.595	- 2.720	972.565	32.565	+ 33.663	88.576800	2,039.809485
9	709.335	59.335	- 55.433	986.588	46.588	- 6.275	2582.512604	372.327125
4	655.162	5.162	- 25.206	966.290	26.290	- 45.092	662.665740	232.764904
5	684.129	34.129	+ 56.945	941.496	1.496	- 14.244	85.189720	486.133476
							3,353.297740	421.586216
							2,931.711428	6091.225505
								2,022.936933
								2,931.711428

三和測量建設株式会社

$\frac{1}{2} = 1.465.855714$

面積計算書

工区

2

ブロック

2

計算者



精算者



備考

福留 167-2
17
-9

福留 167-4
168

点	①	②	③	④	⑤	⑥	③	×	⑤	②	×	⑥
	X	X-(定数)	X _{n-1} -X _{n+1}	Y	Y-(定数)	Y _{n-1} -Y _{n+1}	+	-	+	-		
9	-152, 709.335	-152.640 69.335	+53.671	-35, 986.588	-35.960 26.588	+25.892		1427.004548		1795.221820		
(A) No.40	708.833	68.833	-1.745	992.182	22.182	+17.395	56.157590			1197.350035		
10	707.590	67.590	-63.872	-36, 003.983	43.983	-12.937	2809.282176		874.411830			
23	644.961	4.961	-64.020	-35, 979.245	19.245	-27.772	1232.064900		127.776892			
3	643.570	3.570	+10.201	976.211	16.211	-12.955		165.368411	46.249350			
4	655.162	15.162	+65.765	966.290	6.290	+10.277		413.661850		157.336074		
								4.097.504666	2.006.034829	1,058.438072	3,149.907929	
								2.091.469857			2,091.469857	
									1/2 = 1,045.7349285			
11	-152, 703.911	-152.630 73.911	+63.404	-36, 034.973	-36.000 34.973	+41.646		2217.428092		3,078.097506		
(A) No.43	701.752	71.752	-3.026	050.867	50.867	+21.682	153.923542			1,555.726864		
12	700.885	70.885	-63.528	056.655	56.655	-18.808	3599.178840		1333.205080			
19	638.224	8.224	-67.534	032.059	32.059	-38.894	2165.072506		319.864256			
VI	633.351	3.351	+0.124	017.761	17.761	-22.838		2,202364	76.530138			
20	638.348	8.348	+70.560	009.221	9.221	+17.212		650.633760		143.685776		
								5,918.174882	2,870.264216	1,729.599474	4,777.510146	
								3,047.910672			3,047.910672	

三和測量建設株式会社

1/2 = 1,523.955336

面積計算書

工
区

2

ブ
ロ
ック

2

計
算
者



精
算
者



備
考

167-5
-8

点	①	②	③	④	⑤	⑥	③	×	⑤	②	×	⑥
	X	X-(定数)	X _{n-1} -X _n	Y	Y-(定数)	Y _{n-1} -Y _n	+		-	+		-
10	-152. 707.590	-152.630 77.590	+61.809	-36 005.983	-35.970 33.983	+32.524			2100.455247			2523.337160
(R) NO.41	706.770	76.770	-1.734	011.769	41.769	+15.647	72.427446					1201.220190
(R) E C	705.856	75.856	-2.364	019.630	49.630	+19.557	117.325320					1483.315792
R NO.42	704.406	74.406	-1.945	031.326	61.326	+15.343	119.279070					1141.611258
11	703.911	73.911	-66.058	034.973	64.973	-22.105	4291.986434			1633.802655		
20	638.348	8.348	-61.669	009.221	39.221	-46.673	2418.719849			389.626204		
22	642.242	12.242	-1.516	-35 988.300	18.300	-27.242	27.742800			333.496564		
2	636.832	6.832	+1.328	981.979	11.979	-12.089		15.908112		82.592048		
3	643.570	13.570	+8.129	976.211	6.211	-2.734		30.489219		37.100380		
23	644.961	14.961	64.020	979.245	9.245	+27.772		391.864900				415.496892
								7047.480919	2738.717478	2476.617851	676.3381292	
								4288.763441				4288.763441
								V _B = 2144.3817205				

面積計算書

工区

2

ブロック

2

計算者



精算者



備考

福富 171-1
波野 998-2

点	①	②	③	④	⑤	⑥	③ ×	⑤	② ×	⑥	
	X	X-(定数)	X _{n-1} -X _{n+1}	Y	Y-(定数)	Y _{n-1} -Y _{n+1}	+	-	+	-	
12	-152, 700.885	-152.660 40.885	+ 23.977	-36, 056.655	-36.040 16.655	+ 23.956		399.336935		979.441060	
(A) No.44	698.828	38.828	- 5.228	070.392	30.392	+ 33.245	158.889276			1290.836860	
(A) No.45	695.657	35.657	- 5.969	089.900	49.900	+ 35.566	297.853100			1268.176862	
13	692.859	32.859	- 11.151	105.958	65.958	+ 21.569	735.497658			708.735771	
29	684.506	24.506	- 27.795	111.469	71.469	+ 1.046	1,986.480855			25.633276	
27	665.064	5.064	- 9.655	107.004	67.004	- 65.033	646.923620	329.327112			
24	674.851	14.851	+ 35.821	046.436	6.436	- 50.249		230.542956	747.732999		
								3,825.644609	629.880891	4,077.060111	4,272.823829
								3,195.763718			3,195.763718
									1/2 = 1,597.881859		
27	-152, 665.064	-152.650 15.064	- 13.770	-36, 107.004	-36.080 27.004	+ 13.369	371.845080			201.390616	
28	653.870	3.870	- 12.585	104.433	24.433	- 4.370	307.489305		16.911900		
16	652.479	2.479	- 0.986	102.634	22.634	- 15.767	22.317124		39.086393		
17	652.884	2.884	+ 15.161	088.666	8.666	- 11.570		131.385226	33.367880		
26	667.640	17.640	+ 12.180	091.064	11.064	+ 18.328		134.759520		323.482320	
								701.651509	266.144746	89.366173	524.872936
								435.506763			435.506763

面積計算書

工区

2

ブロック

2

計算者



精算者



備考

福富 997-4
169

点	① X	② X-(定数)	③ X _{n-1} -X _{n+1}	④ Y	⑤ Y-(定数)	⑥ Y _{n-1} -Y _{n+1}	③ × ⑤	② × ⑥
							+	-
17	-152, 652.884	-152.650 2.884	-14.424	-36, 088.666	-36.070 18.666	-13.881	269.238384	40.032804
18	653.216	3.216	+16.574	077.183	7.183	-8.854	119.051042	28.474464
25	669.458	19.458	+14.424	079.812	9.812	+13.881	141.528288	270.096498
26	667.640	17.640	-16.574	091.064	21.064	+8.854	349.114736	156.184560
							618.353120	260.579230
							68.507268	426.281058
							257.773790	357.773790
							½ = 178.886895	
18	-152, 653.216	-152.650 23.216	-16.211	-36, 077.183	-36.030 47.183	-3.679	764.883613	85.411664
V	653.247	23.247	-14.992	076.133	46.133	-45.124	691.625936	1048.997628
19	638.224	8.224	+21.604	032.059	2.059	-29.697	44.482636	244.228128
24	674.851	44.851	+31.234	046.436	16.436	+47.753	513.362024	2141.769803
25	669.458	39.458	-21.635	079.812	49.812	+30.747	1077.682620	1213.215126
							2,534.192169	557.844660
							1,378.637420	3,354.984929
							1,976.347509	1,976.347509
							½ = 988.1737545	

面積計算書

工区

2

ブロック

2

計算者



精算者



備考

波野 P P 3
(係) 2-2-1

点	①	②	③	④	⑤	⑥	③ × ⑤	② × ⑥
	X	X-(定数)	X _{n-1} -X _{n-2}	Y	Y-(定数)	Y _{n-1} -Y _{n-2}	+	-
Ⅳ	-152, 633.351	-152.610 23.351	-21.189	-36, 017.761	-35.980 37.761	-10.404	800.117829	242.743806
Ⅰ	617.159	7.159	-1.570	-35, 998.817	18.817	-31.459	29.542690	225.214981
/	631.781	21.781	+23.520	986.302	6.302	-2.119	148.223040	46.153939
>1	640.679	30.679	+6.567	996.698	16.698	+22.919	109.655766	703.132001
20	638.348	28.348	-7.328	-36, 009.221	29.221	+21.063	214.131488	597.093924
							1,048.792007	257.878806
							785.913201	514.312724
								1,300.225925
								785.913201
								1/2=392.9566005
/	-152, 631.781	-152.610 1.781	-3.847	-35, 986.302	-35.980 6.302	-14.719	24.243794	26.214539
>	636.832	6.832	+10.461	981.979	1.979	+1.998	20.702319	13.650336
>>	642.242	12.242	+3.847	988.300	8.300	+14.719	31.930100	180.189998
>/	640.679	10.679	-10.461	996.698	16.698	-1.998	174.677778	21.336642
							198.921572	52.632419
							146.289153	47.551181
								193.840334
								146.289153
								1/2=73.1445765

面積計算書

工区

2

ブロック

2

計算者



精算者



備考

スリッ Ⅱ

点	①	②	③	④	⑤	⑥	③ × ⑤		② × ⑥	
	X	X-(定数)	X _{n-1} -X _{n+1}	Y	Y-(定数)	Y _{n-1} -Y _{n+1}	+	-	+	-
6	-152,704.242	-152,700 -4.242	+0.571	-35,724.281	-35,700 -24.281	-12.839		13.264457	54.463038	
Ⅱ	713.983	-13.983	+9.170	915.944	-15.944	+4.502		146.206480		62,951466
7	713.412	-13.412	-9.741	928.783	-28.783	+8.337	280.375203			111,815844
								160.670831		174.767310
								120.304272		120.304272
								1/2=60.152136		

面積計算書

工区 2 ブロック 2 計算者  精算者  備考 不却 III, IV

点	① X	② X-(定数)	③ X _{n-1} -X _{n+1}	④ Y	⑤ Y-(定数)	⑥ Y _{n-1} -Y _{n+1}	③ × ⑤ +	⑤ -	② × ⑥ +	⑥ -
III	-152, 691.304	152600 91.304	- 9.485	-36, 114.568	36100 14.568	+ 3.218	138.177480			293.816272
14	682.776	82.776	+ 1.555	112,610	12.610	- 8.610		19.608550	712.701360	
13	692.859	92.859	+ 9.485	105,958	5.958	- 3.218		56.511630	298.820262	
(P) No.46	692.261	92.261	- 1.555	109,392	9.392	+ 8.610	14.604560			794.367210
							152.782040	76.120180	1011.521622	1088.183482
							76.661860			76.661860
									1/2 = 38330930	
IV	-152, 652.392	152650 2.392	- 2.837	-36, 105.633	36100 5.633	- 3.670	15.980821			8.778640
16	652.479	2.479	+ 2.924	102,634	2.634	+ 0.671		7.701816		1.663409
15	655.316	5.316	- 0.087	106,304	6.304	+ 2.999	0.548448			15.942684
							16.529269	7.701816	8.778640	17.606093
							8.827453			8.827453
									1/2 = 4.4137265	

面積計算書

工
区

2

ブ
ロ
ック

2

計
算
者



精
算
者



備
考

水路

点	①	②	③	④	⑤	⑥	③	×	⑤	②	×	⑥
	X	X-(定数)	X _{n-1} -X _{n+1}	Y	Y-(定数)	Y _{n-1} -Y _{n+1}	+	-	+	-		
15	-152, 655.316	152600 55.316	- 28.906	-36, 106.304	36100 6.304	- 8.177	182.223024			452.318932		
28	653.870	53.870	+ 29.190	104.433	4.433	+ 5.165		129.399270				278.238550
29	684.506	84.506	+ 28.906	111.469	11.469	+ 8.177		331.522914				691.005562
14	682.776	82.776	- 29.190	112.610	12.610	- 5.165	368.085900			427.538040		
							550.309320	460.922184		879.856972		769.244112
							89.387140					89.387140
										1/2 = 44.693570		

計年月日
算日

計算者



検査者



B.NO. 2

各筆面積計算書

地番	算式	隅切	地積	摘要
福富	166-13		457.12	
"	166-9		1465.85	
"	167-2 -3 -7		1045.73	
"	167-5 -8		2144.88	
"	167-4 168		1523.95	
"	171-1		1597.88	
茨野	998-2		217.75	
福富	997-4		178.88	
"	169		988.17	
茨野	993		392.95	
保	2-2-1		73.14	
隅切	I	60.15		
	III	58.33		
	IV	4.41		
水路	44.69			
計			10233.38	
全体			10233.41	
差			0.03	

	前	新	差
福島 997-4	178.88.	211.13 -	+ 32.25 -
" 169	988.17.	972.15 -	- 16.02 -
深野 998-2	217.75.	201.51.	- 16.24 -
	1384.80.	1384.79	- 0.01 -

面積計算書

工
区

2

ブ
ロ
ック

2

計
算
者

精
算
者

備
考

福島 169, 997-4

点	①	②	③	④	⑤	⑥	③ × ⑤		② × ⑥	
	X	X-(定数)	X _{n-1} -X _{n+1}	Y	Y-(定数)	Y _{n-1} -Y _{n+1}	+	-	+	-
	-1521	-1521,600-		-36,	-36,000-					
19	638.224	38.224-	+ 21.604-	632.059	32.059-	- 29.697-			692.602636-	1135.138128-
24	674.851-	74.851-	+ 31.388-	646.436	46.436-	+ 46.796-			1457.633168-	3522.727396-
25	669.612-	69.612-	- 21.606-	678.855	78.855+	+ 29.770-	1793.741130-			2072.349240-
18	653.245-	53.245-	- 16.365-	676.206	76.206-	- 2.722-	1247.111190-			144.932890-
V	653.247-	53.247-	- 15.021-	676.133	76.133-	- 44.147-	1143.593793-			2350.695309-
							4094.446113-	2150.135804-	3630.766327-	5575.076676-
							1944.310309-			1944.310309-
							$\times \frac{1}{2} >$	972.155		
18	-1521	-1521,650-		-36,	-36,000-					
	653.245	3.245-	+ 16.760-	676.206	76.206-	- 10.912-			1277.212560-	35.409440-
25	669.612	19.612	+ 14.221-	678.855	78.855+	+ 15.936-			1121.396955-	312.536832-
26	667.466	17.466-	- 16.760-	692.142	92.142+	+ 10.912-	1544.299920-			190.588992-
17	652.852	2.852	+ 14.221-	689.767	89.767	+ 15.936-	1276.576507-			45.449472-
							2820.876427	2398.609515-	30.858912-	503.125824-
							422.266912			422.266912
							$\times \frac{1}{2}$	211.133		

面積計算書

工区

2

ブロック

2

計算者

精算者

備考

浜野 998-2

点	①	②	③	④	⑤	⑥	③ × ⑤		② × ⑥	
	X	X-(定数)	X _{n-1} -X _{n+1}	Y	Y-(定数)	Y _{n-1} -Y _{n+1}	+	-	+	-
17	^{-152,} 652.852	^{-152,650-} 2.852	+ 14.987	^{-36,} 889.767	^{-36,000-} 89.767	- 10.492				
26	667.466	17.466	+ 12.212	092.142	92.142	+ 17.237				
27	665.064	15.064	- 13.596	107.004	107.004	- 12.291	1454.926384			185.151624
28	653.870	3.870	- 12.585	104.433	104.433	- 4.370	1314.289305			16.911900
16	652.479	2.479	- 1.018	102.634	102.634	- 14.666	104.481412			36.357014
							2873.597101	2470.576133	93.192099	496.213066
							403.020968			403.020968
							$\times \frac{1}{2}$	201.5101		