

**BLOCK NO. 31**

街区計算



面積計算書

工区

2

ブロック

31

計算者



精算者



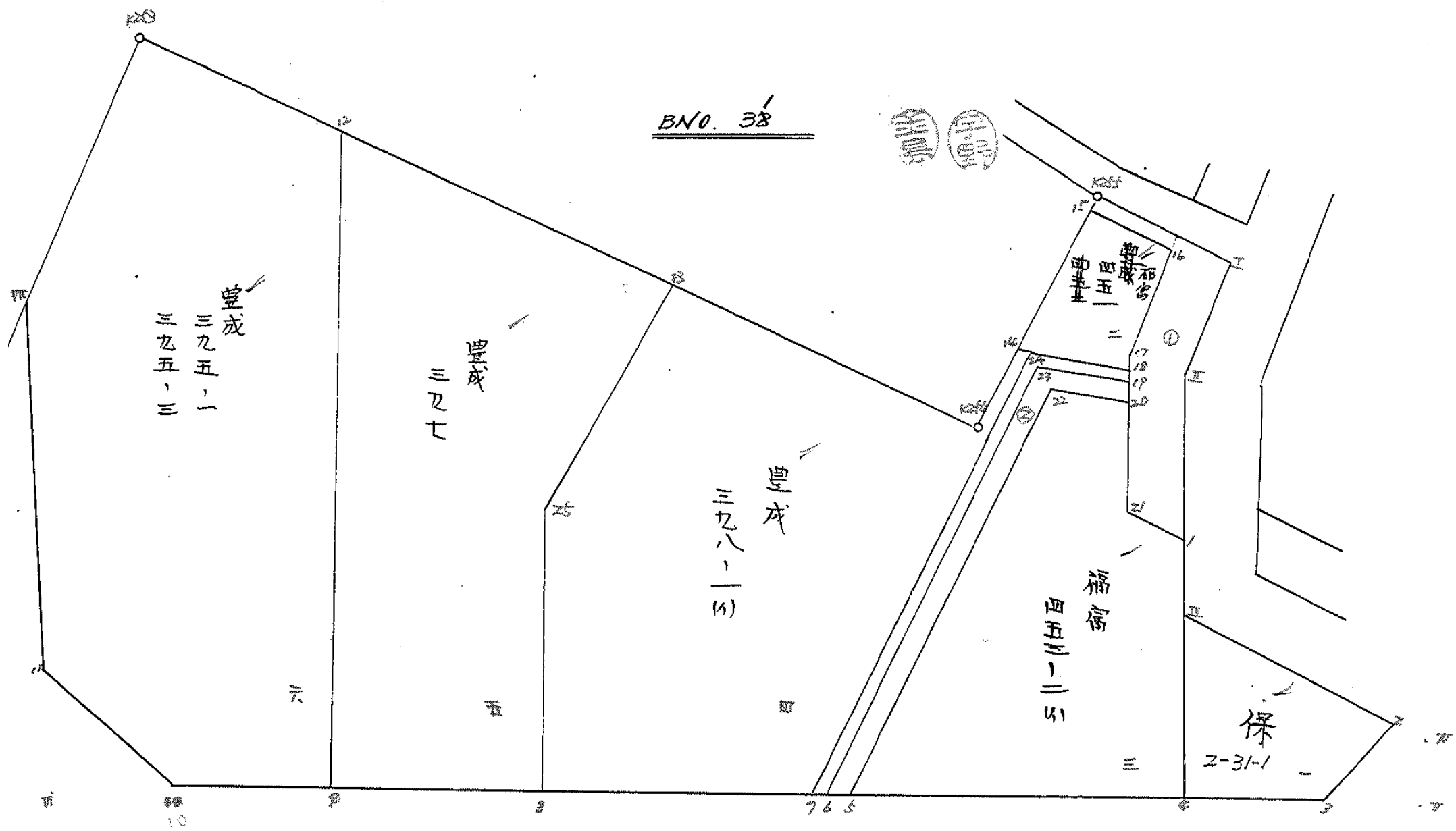
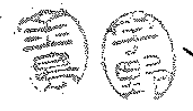
備考

全体

点	①	②	③	④	⑤	⑥	③ × ⑤	② × ⑥
	X	X-(定数)	X <sub>n-1</sub> -X <sub>n+1</sub>	Y	Y-(定数)	Y <sub>n-1</sub> -Y <sub>n+1</sub>	+ -	+ -
I	538.450	48.450	+16.209	589.602	9.402	-4.427	157.397018	214.48860
II	547.020	57.020	+29.179	594.898	14.898	+10.271	434.708702	525.652020
III	567.629	77.629	+34.889	599.673	19.673	-13.222	686.371297	1026.410638
IV	581.909	91.909	+19.042	591.676	1.676	-16.774	31.916392	1541.681566
V	586.671	96.671	-21.291	582.899	2.899	+114.953	61.722609	11117.621463
VI	560.618	70.618	-66.958	696.629	116.629	+106.762	7809.244582	9539.318916
VII	519.713	29.713	-60.862	689.661	109.661	-21.373	6674.187782	125.055949
K253	499.756	9.756	+28.259	675.256	95.256	-75.953	2691.839304	740.997468
K254	547.972	57.972	+31.055	613.708	33.708	-75.931	1066.801940	4401.871932
K255	530.811	40.811	-9.522	599.325	19.325	-26.306	184.012650	991.752166
							14729.157623	50444.032693
							9685.134930	9552.457869
								19237.592777
								9685.134930
								991.752166
								1/2 = 4842.567465
								4842.56 - (29.28 + 49.93) = 4759.35

# 圖地計算

BN0. 38



7#-1

面積計算書						工区	Z	ブロック	31	計算者	精算者	備考	1.保留地 2-31-1 Z.豊成 45/
点	①	②	③	④	⑤	⑥	③ × ⑤	② × ⑥					
	X	X-(定数)	X <sub>n-1</sub> -X <sub>n+1</sub>	Y	Y-(定数)	Y <sub>n-1</sub> -Y <sub>n+1</sub>	+	-	+	-			
Ⅱ	-152 590.137	-152.560 20.137	+17.088	-36 593.909	-36.590 3.907	-8.265			66.762816	166.029665			
Ⅲ	594.717	24.717	+2.011	591.028	11.428	+18.735			22.981708	443.072995			
Ⅳ	592.148	22.148	-17.088	602.642	22.642	+8.245			386.906496	182610260			
Ⅴ	567.629	7.629	-2.011	599.673	19.673	-18.735			39.562603	142.929315			
									426.468897	89.744524			
									308.958880	645.693254			
									336.724375	336.724375			
									× 1/2 = 168.3621875				
Ⅵ	-152 597.070	-152.530 7.077	+12.705	-36 594.462	-36.590 4.462	-1.036			56.637710	7.331772			
Ⅶ	545.049	15.049	+8.699	599.574	9.574	+5.280			83.284226	79.453720			
Ⅷ	545.776	15.776	-2.135	599.742	9.742	+9.895			20.799170	156.103520			
Ⅷ	542.916	12.916	-13.437	609.669	19.669	+0.868			261.507608	11.209352			
Ⅸ	542.344	2.344	-5.837	600.610	10.610	-15.007			61.930570	35.176608			
									344.237348	139.773936			
									42.508180	246.771592			
									204.263412	204.263412			
									× 1/2 = 102.131706				

面積計算書

工区

2

ブロック

31

計算者



精算者



備考

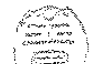

小. 福富 453-2(1)

点	①	②	③	④	⑤	⑥	③ × ⑤		② × ⑥	
	X	X-(定数)	X <sub>n-1</sub> -X <sub>n+1</sub>	Y	Y-(定数)	Y <sub>n-1</sub> -Y <sub>n+1</sub>	+	-	+	-
III	-152 587.629"	-152.500 67.629"	+20.946"	-36 599.673"	-36.590 9.673"	+4.458"				
4	582.148"	82.148"	+8.187"	602.642"	12.642"	+30.611"				
5	575.816"	75.816"	-35.406"	630.284"	40.284"	+4.444"	1426.795504"			336.926304"
22	546.762"	46.762"	-27.113"	607.086"	17.086"	-29.864"	468.252718"			1395.903088"
20	548.703"	48.703"	+11.021"	600.420"	10.420"	-4.567"	114.838820"			222.426601"
21	557.763"	57.763"	+12.499"	602.519"	12.519"	-2.236"	156.474981"			129.158068"
1	561.202"	61.202"	+9.866"	598.184"	8.184"	-2.846"	80.743366"			174.180892"
							1889.548022"			658.167857"
							1231.380165"			1921.668649"
										3153.068814"
										1231.380165"
										x 1/2 = 615.6900825"

面積計算書						工区	Z	ブロック	31	計測者	縮尺者	備考	4.豊成 398-1(A)		
点	①	②	③	④	⑤	⑥	③ × ⑤	② × ⑥							
	X	X-(定数)	X <sub>n-1</sub> -X <sub>n+1</sub>	Y	Y-(定数)	Y <sub>n-1</sub> -Y <sub>n+1</sub>	+	-							
	-152	-152.500		-36	-36.600										
211	543.298	43.298	+ 32.161	608.163	8.163	+ 24.049	262.530243	1041.273602							
7	575.075	75.075	+ 26.627	633.518	33.518	+ 47.839	892.493786	3591.512925							
8	569.925	69.925	- 24.150	656.002	56.002	+ 18.132	1352.448300	1267.890100							
25	550.925	50.925	- 38.653	651.650	51.650	- 20.977	1996.427458	1069.253725							
13	531.272	31.272	- 2.953	635.025	35.025	- 37.942	103.428825	1186.522224							
1254	547.972	47.972	+ 11.642	613.708	13.708	- 25.556	159.588536	1225.972432							
11	542.914	42.914	- 4.674	609.069	9.069	- 5.545	44.258106	237.958130							
			70.430			90.020	3496.562681	1314.602565							
							1314.602565	3718.706511							
							5900.666627								
							2181.960116	2181.960116							
							1/2 = 1090.980058								



# 面積計算書

工区  $\lambda$  ブロック  $\omega$  計算者  精算者 

備考 5. 空成 397  
6. 豊成 395-1  
395-3

点	①	②	③	④	⑤	⑥	③ × ⑤		② × ⑥			
	X	X-(定数)	X <sub>n-1</sub> -X <sub>n+1</sub>	Y	Y-(定数)	Y <sub>n-1</sub> -Y <sub>n+1</sub>	+	-	+	-		
13	<sup>-152</sup> 531.272	<sup>-152.500</sup> 31.272	+60.090	<sup>-36</sup> 635.025	<sup>-36.600</sup> 35.025	-9.464			1404.152250	275.958208		
25	550.925	50.925	+38.653	651.650	51.650	+20.977			1896.627650	1068.253725		
8	569.925	69.925	-14.933	656.002	56.002	+22.107			336.277866	1565.831775		
9	565.858	65.858	-59.090	673.757	73.757	+5.112			4359.301130	336.666096		
12	510.835	10.835	-34.586	661.114	61.114	-38.732			2113.689800	419.661220		
分筆後の座標なし									6471.989930	4226.857686	715.619628	2950.751776
分筆後の座標なし									2235.132368	$\times \frac{1}{2} = 1117.566184$	2235.132368	
分筆後の座標なし									<del>1324.2113</del>			
12	<sup>-152</sup> 540.835	<sup>-152.650</sup> 60.835	+66.102	<sup>-36</sup> 661.114	<sup>-36.650</sup> 61.114	-1.489				91.191665		
9	565.858	115.858	+52.016	673.757	73.757	+25.768			734.657628	2985.428700		
10	562.851	112.851	-15.098	686.882	36.882	+21.193			1235.700112	2391.654242		
11	550.760	100.760	-43.138	694.750	44.750	+2.779			1569.444136	280.012060		
VII	519.713	69.713	-51.004	699.661	99.661	-19.694			1939.453100	1372.927842		
K253	499.756	49.756	-3.878	675.256	25.256	-28.547			2022.869600	1420.384532		
分筆後の座標なし									224.222768	2886.504096	6657.092227	
分筆後の座標なし									4742.989948	1970.401760	2772.588208	
分筆後の座標なし									2772.588208			

$\times \frac{1}{2} = 1296.294104$

# 面積計算書

工  
区

2

ブ  
ロ  
ック

2/

計算者



測量者



備考

木路

①

点	①	②	③	④	⑤	⑥	③	×	⑤	②	×	⑥
	X	X-(定数)	X <sub>n-1</sub> -X <sub>n+1</sub>	Y	Y-(定数)	Y <sub>n-1</sub> -Y <sub>n+1</sub>	+		-	+		-
I	538.450 <sup>-152</sup>	38.450 <sup>-152.500</sup>	+ 16.209	589.402 <sup>-36</sup>	39.402 <sup>-36.550</sup>	- 4.427			638.667018	170.218150		
II	547.020	47.020	+ 22.752	594.898	44.898	+ 8.782			1021.519296			442.929640
1	561.202	61.202	+ 10.743	598.184	48.184	+ 7.621			517.640712			466.420442
21	557.763	57.763	- 16.153	602.519	52.519	+ 1.390	848.339407					80.290570
17	545.049	45.049	- 20.686	599.576	49.574	- 8.057	1025.487764			362.959793		
16	537.077	37.077	- 12.705	594.412	44.462	+ 1.036	364.889710					38.411772
15	532.344	32.344	- 6.266	600.610	50.610	+ 4.863	317.122260					157.288878
K225	530.811	30.811	+ 6.106	599.225	49.325	- 11.208			301.178450	345.329688		
									2755.839141	2479.003476	878.507631	1155.341296
									276.833565			276.833665
												1/2 = 138.4168325

面積計算書		工区	ノ	ブロック	31	計算者	精算者	備考	水路 ② 泥上げ	
点	①	②	③	④	⑤	⑥	③	⑤	②	⑥
	X	X-(定数)	X <sub>n-1</sub> -X <sub>n+1</sub>	Y	Y-(定数)	Y <sub>n-1</sub> -Y <sub>n+1</sub>	+	-	+	-
19	<sup>-152</sup> 546.752	<sup>-152.540</sup> 6.752	+4.256	<sup>-36</sup> 599.968	<sup>-36.590</sup> 9.968	-7.383			42423808	49.850016
20	548.703	8.703	-0.010	600.420	10.420	+7.118	0.104200			61.947954
22	546.742	6.742	+27.113	607.086	17.086	+29.866		463.252718		201.343088
5	575.816	25.816	+28.581	630.284	60.284	+25.353		1151.257004		908.043068
6	575.323	25.323	-31.369	632.439	42.439	-22.481	1331.268991		794.096363	
23	544.447	4.447	-28.571	607.803	17.803	-32.471	508.649543		144.398537	
								1260.022704	1657.033530	988.344916
								182.989174		182.989174
								x 1/2 = 91.494587		
18	<sup>-152</sup> 545.776	<sup>-152.540</sup> 5.776	+3.454	<sup>-36</sup> 599.942	<sup>-36.590</sup> 9.942	-8.195			33.648868	47.334320
19	546.752	6.752	-1.329	699.968	9.968	+8.061	12.267472			54.427872
23	544.447	4.447	+28.571	607.803	17.803	+32.471		508.649543		144.398537
6	575.323	25.323	+30.628	632.439	42.439	+25.715		1299.821692		908.330965
7	575.075	25.075	-32.025	633.518	43.518	-24.276	1393.663950		251.420700	
24	543.298	3.298	-29.299	608.163	18.163	-33.776	532.157737		111.393248	
								1939.069159	1862.120079	1010.208268
								96.949086		96.949086
								x 1/2 = 19.674543		

面積計算書		工区	Z	ブロック	2/	計算者	精算者	備考	隅切(Ⅱ.V), Ⅵ	
点	①	②	③	④	⑤	⑥	③ × ⑤	② × ⑥		
	X	X-(定数)	X <sub>n-1</sub> -X <sub>n+1</sub>	Y	Y-(定数)	Y <sub>n-1</sub> -Y <sub>n+1</sub>	+	-	+	-
	-152	-152.580		-36	-36.580					
Ⅱ	581.909	1.909	+ 6.534	581.676	1.676	- 1.010		10.950984	1.928090	
Ⅴ	586.671	6.671	+ 2.808	582.899	2.899	+ 9.752		8.140392		65.055592
Ⅲ	584.717	4.717	- 6.534	591.428	11.428	+ 1.010	74.670552			4.764170
Z	580.137	0.137	- 2.808	583.909	3.909	- 9.752	10.976472		1.336024	
							85.647024	19.091376	3.264114	69.819762
							66.555648			66.555648
							1/2=33.277824			
10	562.851	-152.500	+ 9.858	626.882	-36.600	+ 1.679		856.482756		105.526829
Ⅵ	560.618	60.618	- 12.098	696.629	96.629	+ 8.068	1168.341239			489.066024
11	550.760	50.760	+ 2.235	694.950	94.950	- 9.747		212.023350	494.757720	
							1168.341239	1068.506106	494.757720	594.592853
							99.835133			99.835133
							1/2=49.9275665			

計年月日

計算者



檢査者



B.NO. 3/

各筆面積計算書

地番	算式	隅切	地積	摘要
1	<del>未指定地保</del> 2-31-1		168.26	
2	豊成 451		102.13	
3	福富 453-2(1)		615.69	
4	豊成 398-1(1)		1090.98	
5	豊成 397		1117.56	
6	豊成 395-1 395-3		1386.29	
	水路 ①		138.41	
	水路 ②		91.49	
	泥上げ		48.67	
計			4759.38	
銜			4759.35	
差			0.03	
	換地面積		4312.65	
	<del>未指定地保</del> 237		168.26	
	水路		229.90	
	管理通		48.67	