

BLOCK NO. 27

街区計算

街区略図

工区

2

ブロック

27

記入者

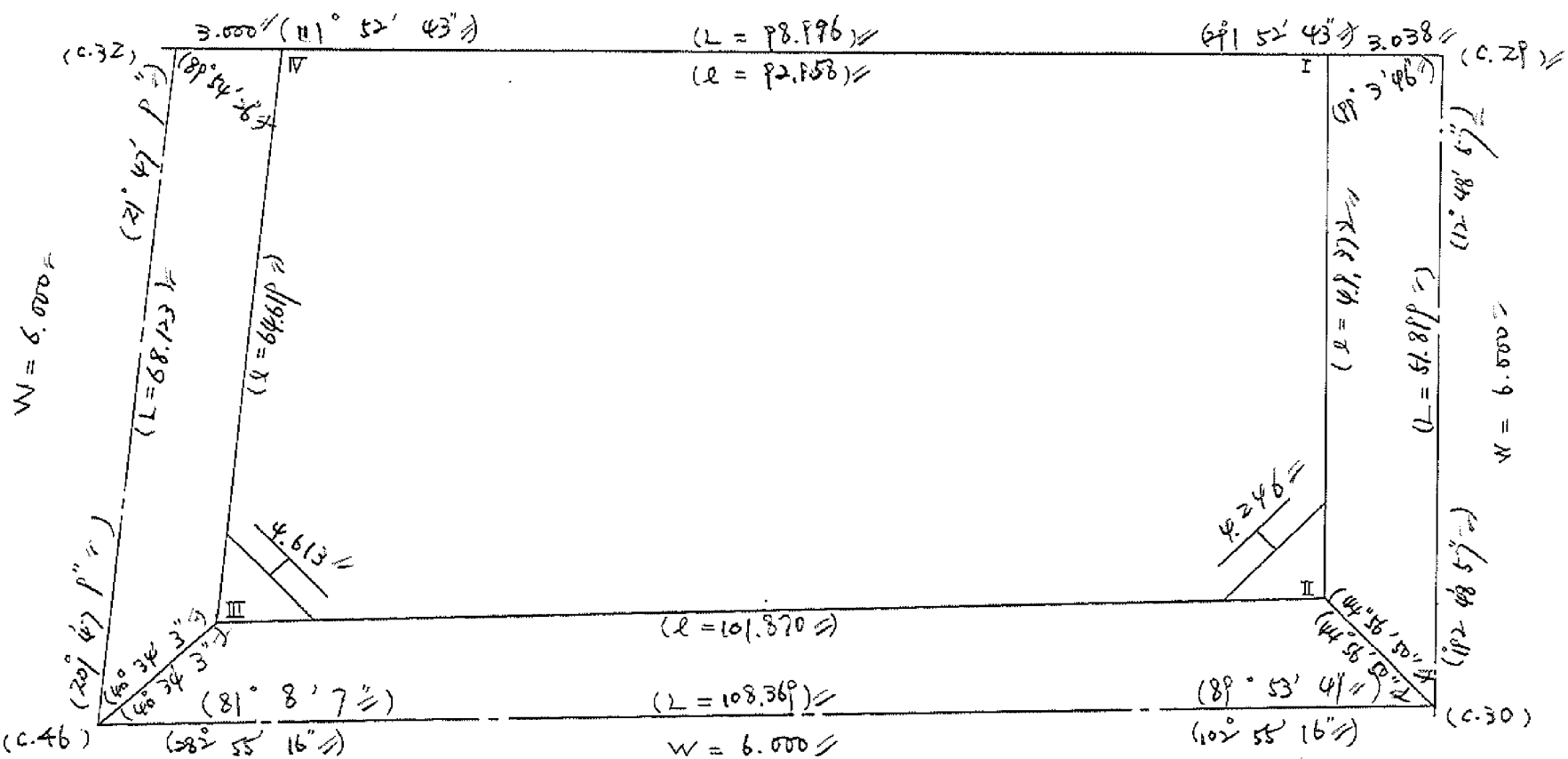
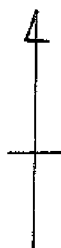


点検者



$X = -152,474.638$
 $Y = -36,473.669$

$X = -152,511.531$
 $Y = -36,381.804$



$X = -152,537.902$
 $Y = -36,498.952$

$X = -152,582.137$
 $Y = -36,393.316$

面積計算書

工区

2

ブロック

27

計算者



精算者



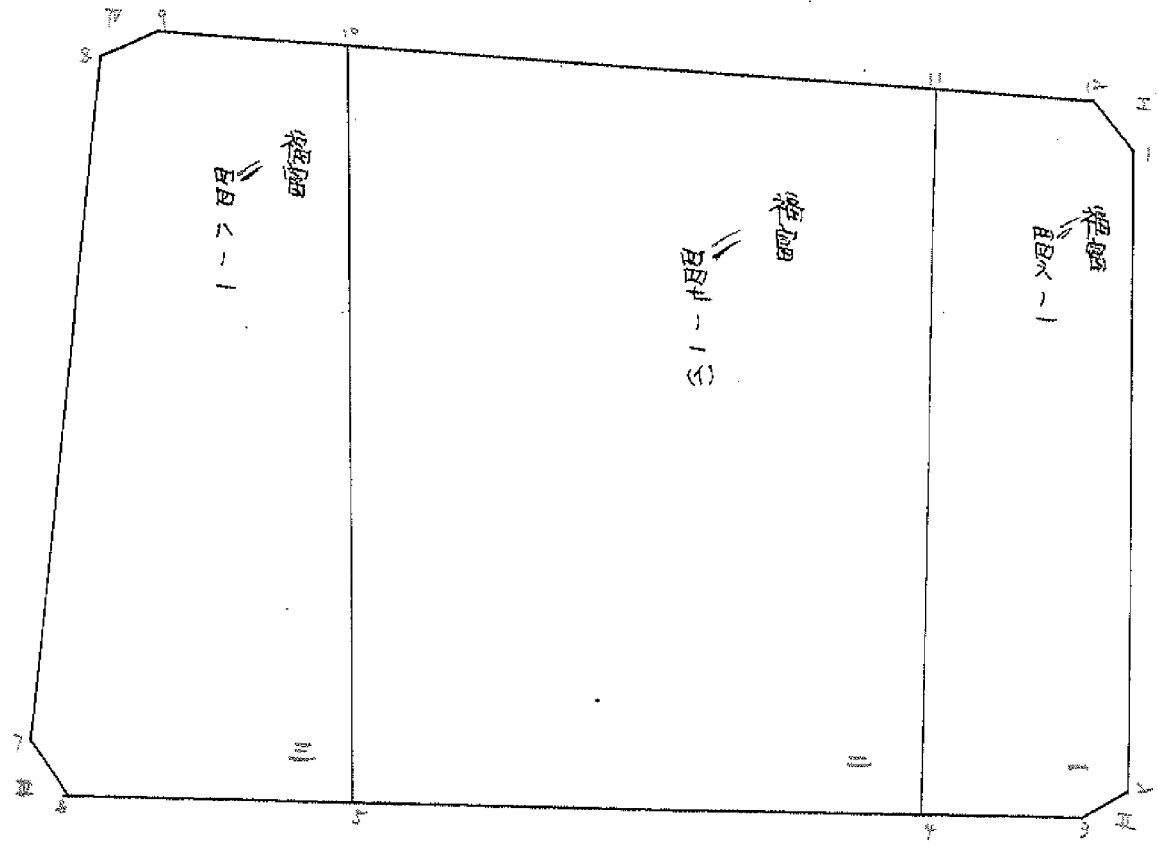
備考

全体

点	①	②	③	④	⑤	⑥	③ × ⑤	② × ⑥
	X	X-(定数)	X _{n-1} -X _{n+1}	Y	Y-(定数)	Y _{n-1} -Y _{n+1}	+	-
I	⁻¹⁵² 510.399	^{-152,400} 110.399	+ 82.785	⁻³⁶ 384.623	^{-36,300} 84.623	- 75.311		7,005.515055, 8,314.259089
II	558.541	158.541	+ 25.362	395.574	95.574	+ 110.243		2,423.947788, 17,478.035463
III	535.761	135.761	- 82.785	494.866	194.866	+ 75.311	16,131.987810	10,224.296671
IV	475.753	75.756	- 25.362	470.885	170.885	- 110.243	4,333.985370	8,351.568708
							20,465.967180	9,429.462843, 16,665.827797, 27,702.332139
							11,036.504337	11,036.504337
								$\frac{1}{2} = 5,518.2521685$
						スミヤ	II III IV	m^2
								$5,518.25 - (4.44 + 4.50 + 4.45 + 4.50) = 5,500.36$

面地計算

BNO 27



4枚-1

面積計算書		工区	Z	ブロック	27	計算者	精算者	備考	1. 田田ノ1 2. 田田ノ1-(1) } 福富		
点	①	②	③	④	⑤	⑥	③ × ⑤	② × ⑥			
	X	X-(定数)	X _{n-1} -X _{n+1}	Y	Y-(定数)	Y _{n-1} -Y _{n+1}	+	-	+	-	
1	-152, 513.324	-152.500, 13.324	+46.335	-36, 385.288	-36.300, 85.288	+ 7.501		3951.819480		99.943324	
2	555.616	55.616	+44.546	394.908	94.908	+ 13.210		4227.771768		734.687360	
3	557.870	57.870	- 0.072	398.498	98.498	+ 13.729	7.091856			794.497230	
4	555.544	55.544	-52.502	408.637	108.637	- 1.349	5703.659774			74.928856	
11	505.368	5.368	-46.263	397.149	97.149	-21.230	4494.404187			113.962640	
12	509.281	9.281	+ 7.956	387.407	87.407	- 11.861		695.410092	110.081941		
								10205.155817	8875.001340	298.973437	1629.127914
								1330.154477			1330.154477
								1/2 = 665.0772385			
11	-152, 505.368	-152.400, 105.368	+69.039	-36, 397.149	-36.300, 97.149	-35.483		6707.069811	3738.727444		
4	555.544	155.544	+38.993	408.637	108.637	+60.231		4236.082541		9368.570664	
5	544.361	144.361	- 69.039	457.380	157.380	+35.483	10865.357820			5122.361368	
10	486.505	86.505	-38.993	444.120	144.120	-60.231	5619.671160			5210.282655	
								16485.028981	10943.152352	8949.055399	14490.932027
								5541.876628			5541.876628
								1/2 2770.938314			

分筆後の座標なし

面積計算書						工区	ブロック	計測者	精算者	備考
						2	27			3.田四ハの-1 福富
点	①	②	③	④	⑤	⑥	③ × ⑤		② × ⑥	
	X	X-(定数)	X _{n-1} -X _{n+1}	Y	Y-(定数)	Y _{n-1} -Y _{n+1}	+	-	+	-
10	-152.486.505	-152.400 86.505	+67.487	-36.444.120	-36.400 44.120	-10.721			2977.526440	927.420105
5	544.361	144.361	+49.927	457.380	57.380	+47.820			2864.811260	6903.343020
6	536.432	136.432	-11.386	491.940	91.940	+36.373	1046.828840			4962.441136
7	532.975	132.975	-57.889	493.753	93.753	-19.942	5427.367417			2651.787450
8	478.543	78.543	-56.101	471.998	71.998	-25.652	4039.159798			2014.785036
9	476.874	76.874	+7.962	468.101	68.101	-27.878		542.220162		2143.093372
									10513.256055	6384.557862
									7737.085963	11865.784156
									4128.698193	4128.698193
									1/2=2064.3490965	

面積計算書

工区

2

ブロック

27

計算者



精算者



備考

隅切

工

II

点	①	②	③	④	⑤	⑥	③ × ⑤		② × ⑥	
	X	X-(定数)	X _{n-1} -X _{n+1}	Y	Y-(定数)	Y _{n-1} -Y _{n+1}	+	-	+	-
I	-152.500 510.399	-152.500 10.599	+4.043	-36.300 384.627	-36.300 84.623	-2.119		342.130789	22.035481	
1	513.324	-13.324	-1.118	385.288	85.288	+2.784	95.351984			37.094016
12	509.281	9.287	-2.925	387.407	87.407	-0.665	255.665475		6.171865	
							351.017459	342.130789	28.207346	37.094016
							8.886670			8.886670
							1/2 = 4.443335			
2	555.616	-152.500 55.616	+0.671	384.908	-36.300 94.908	-2.924		63.683268	162.621184	
II	558.541	58.541	+2.254	385.574	95.574	+3.590		215.423796		210.162190
3	557.870	57.870	-2.925	388.498	98.498	-0.666	288.106650		38.541420	
							288.106650	279.107064	201.162604	210.162190
							8.999386			8.999386
							1/2 = 4.499793			

27

27

面積計算書

工区

2

ブロック

27

計算者



精算者



備考

隅切

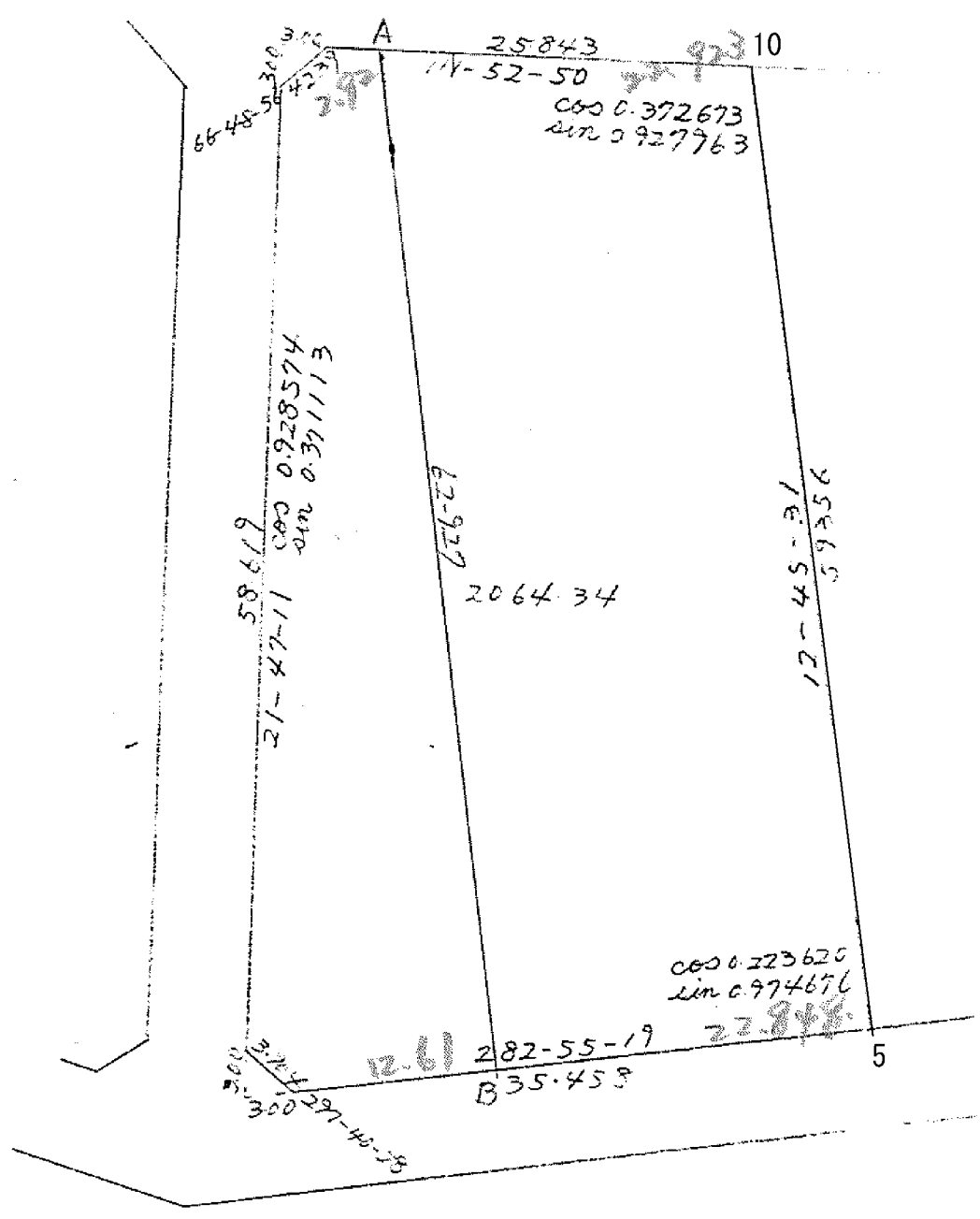
Ⅳ

点	①	②	③	④	⑤	⑥	③ × ⑤		② × ⑥	
	X	X-(定数)	X _{n-1} -X _{n+1}	Y	Y-(定数)	Y _{n-1} -Y _{n+1}	+	-	+	-
6	⁻¹⁵² 536.432	^{-152.50} 36.432	+ 2.786	⁻³⁶ 491.940	^{-36.400} 91.940	+ 1.113		256.144840		40.548816
Ⅲ	535.761	35.761	- 3.457	494.866	94.866	+ 1.813	327.951762			64.834693
7	532.975	32.975	+ 0.671	493.753	93.753	- 2.926		62.908263	96.484850	
							327.951762	319.053103	96.484850	105.383309
							8.898659			8.898659
							1/2 4.4493295			
8	⁻¹⁵² 478.543	^{-152.400} 78.543	- 1.118	⁻³⁶ 471.998	^{-36.400} 71.998	+ 2.784	80.493764			218.663712
Ⅳ	475.756	75.756	- 1.669	470.885	70.885	- 3.897	118.307065		295.221132	
9	476.874	76.874	+ 2.787	468.101	68.101	+ 1.113		189.797487		85.560762
							198.800829	189.797487	295.221132	304.224474
							9.003342			9.003342
							1/2=4.501671			

南

北

第 48-1



座標法面積計算 (4/2)

測点	X	Δx	Y	Δy	(+) F_1 $\Delta x \cdot \Delta y$	(-) F_2 $\Delta x \cdot \Delta y$
	-152		36	(400)		
A	477.962		465.391			
		8.543		109.511	935.552473	
10	486.505		444.120			
		57.856		101.500	5872.384000	
5	544.361		457.380			
		15.109		137.029		700.081161
B	539.252		479.649			
		161.290		145.040		8889.501600
A	477.962		465.391			
Σ =					6807.936473	9589.582761
F = (F ₁) ~ (F ₂) =						2781.646288
計算者					F / 2 =	1390.823144
点検者					N 0.3025 =	420.72