

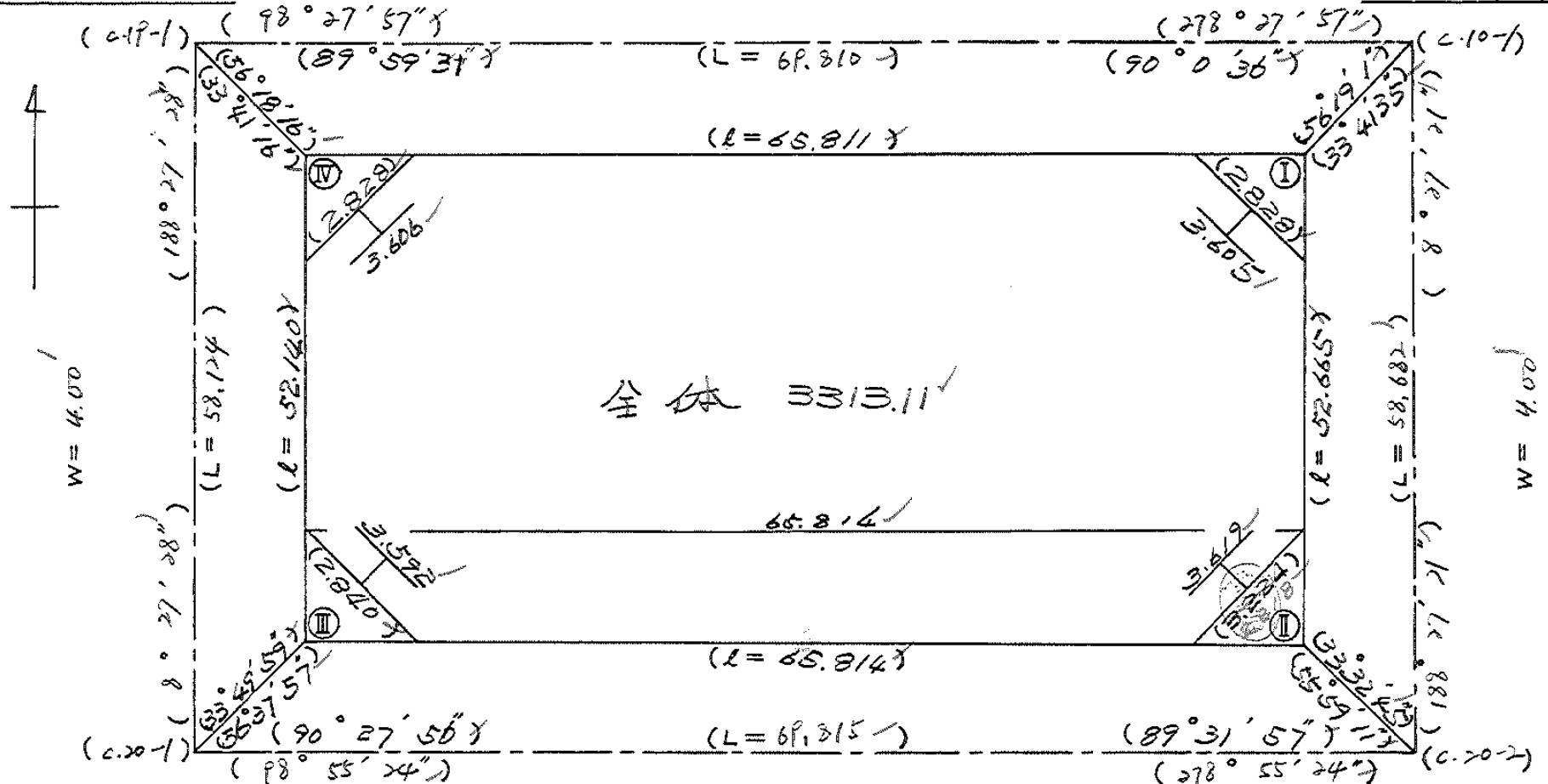
BLOCK NO. 7-2

街区計算

$X = -152,792,863$
 $Y = -36,103,184$

$W = 6.000$

$X = -152,803,240$
 $Y = -36,034,134$



$X = -152,850,455$
 $Y = -36,111,733$

$W = 6.000$

$X = -152,861,284$
 $Y = -36,042,763$

面積計算書

工区

2

ブロック

7-2

計算者

精算者

備考

全体

点	①	②	③	④	⑤	⑥	③ × ⑤	② × ⑥
	X	X-(定数)	X _{n-1} -X _{n+1}	Y	Y-(定数)	Y _{n-1} -Y _{n+1}	+ -	+ -
I	152,805.913	152,700 105.913 +	61.781	36,036.553	36,000 36.553	57.349	2258.290893	6074.004637
II	152,858.006	158.006 +	41.885	36,044.298	44.298 +	72.763	1855.421730	11496.990578
III	152,847.798	147.798 -	61.781	36,109.316	109.316 +	57.349	6753.651796	8476.067502
IV	152,796.225	96.225 -	41.885	36,101.647	101.647 -	72.763	4257.484595	7001.619655
							11011.36391	4113702623
							6897.433768	13075.624312
								19973.058080
								6897.433768
								1/2 = 3448.716884 ✓
			全体		3448.71 -			
								(127.63 + 1.99 + 2.00 + 1.99 + 1.99) = 337.11 ✓

面地計算

街区略図

工区

2

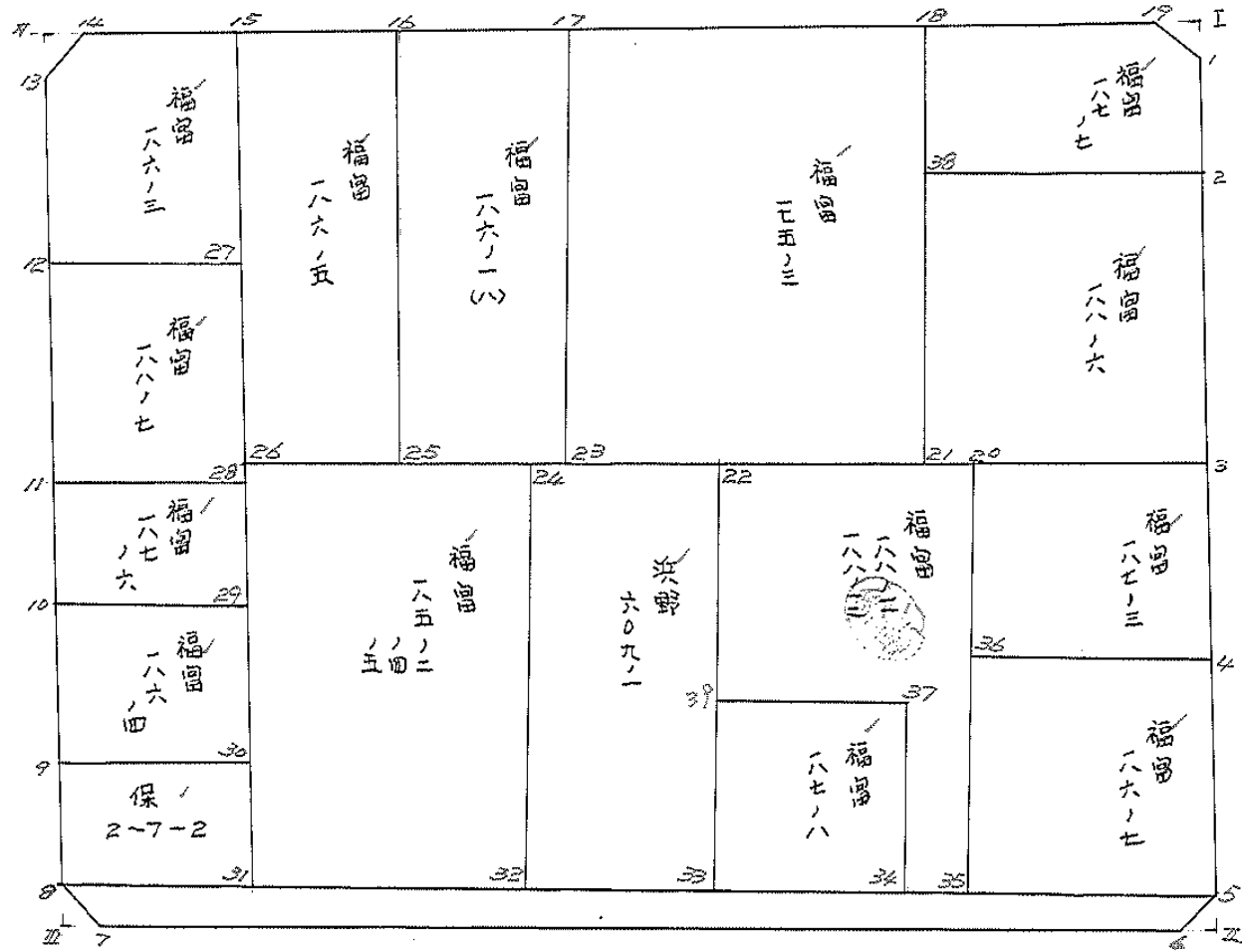
ブロック

7-2

記入者



点検者



面積計算書

工区

2

ブロック

7-2

計算者



精算者



備考

福富

187-7

188-6

点	①	②	③	④	⑤	⑥	③ × ⑤		② × ⑥	
	X	X-(定数)	X _{n-1} -X _{n+1}	Y	Y-(定数)	Y _{n-1} -Y _{n+1}	+	-	+	-
1	-142,807.891	^{152,800} 7.891 ✓ +	8.989	-36,036.847	^{36,000} 36.847 ✓ -	0.685		331.217683	5.405335	
2	-142,814.608	14.608 ✓ +	4.283	-36,037.846	37.846 ✓ +	17.216		162.094418		251.491328
38	-142,812.174	12.174 ✓ -	11.108	-36,054.063	54.063 ✓ +	14.917	600.531804			181.599558
18	-142,803.500	3.500 ✓ -	6.555	-36,052.763	52.763 ✓ -	15.532	345.861465		51.362000	
19	-142,805.619	5.619 ✓ +	4.391	-36,038.531	38.531 ✓ +	15.916		169.189621	89.432004	
							946.393269	662.501722	149.199339	433.090886
							283.891547 ✓			283.891547 ✓
								$\frac{1}{2} = 141.9457735 ✓$		
2	-142,814.608	^{152,800} 14.608 ✓ +	19.044	-36,037.846	^{36,000} 37.846 ✓ -	13.748		720.739224	200.830784	
3	-142,831.218	31.218 ✓ +	14.175	-36,040.315	40.315 ✓ +	18.706		571.465125		583.963908
21	-142,828.783	28.783 ✓ -	19.044	-36,056.542	56.552 ✓ +	13.748	1076.976288			395.708684
38	-142,812.174	12.174 ✓ -	14.175	-36,054.063	54.063 ✓ -	18.706	766.343025		227.726844	
							1843.319313	1292.204349	428.557628	979.672592
							551.114964 ✓			551.114964 ✓
								$\frac{1}{2} = 275.557492 ✓$		

面積計算書

工区

2

ブロック

7-2

計算者



精算者



備考

福富

187-3

186-7

点	① X	② X-(定数)	③ X _{n-1} -X _{n+1}	④ Y	⑤ Y-(定数)	⑥ Y _{n-1} -Y _{n+1}	③ × ⑤	② × ⑥		
							+	-		
3	-152,831.218	152,800 31.218	12.926	-36,040.315	36,000 40.315	-12.075		521.111690	376.957350	
4	-152,842.090	42.090	8.825	-36,041.932	41.932	+15.309		370.047900	644.355810	
36	-152,840.043	40.043	12.926	-36,045.624	55.624	+12.075	718.995824		483.519225	
20	-152,829.164	29.164	8.825	-36,046.007	54.007	-15.309	476.611775		446.471676	
							1195.607599	891.161590	823.427026	1127.875035
							304.446009			304.446009
								1/2 = 152.2230045		
4	-152,842.090	152,800 42.090	15.984	-36,041.932	36,000 41.932	-11.620		670.241088	489.085800	
5	-152,846.027	56.027	11.790	-36,046.004	44.004	+15.748		518.807160	882.313196	
35	-152,843.880	53.880	15.984	-36,047.680	57.680	+11.620	92.1957120		626.085600	
36	-152,840.043	40.043	11.790	-36,045.624	55.624	-15.748	655.806960		630.597164	
							1577.764080	1189.048248	1117.682764	1508.398796
							388715832			388715832
								1/2 = 194.357916		

面積計算書

工区

2

ブロック

7-2

計算者



精算者



備考

福宮 188-2, -12
" 187-2

点	①	②	③	④	⑤	⑥	③	×	⑤	②	×	⑥
	X	X-(定数)	X _{n-1} -X _{n+1}	Y	Y-(定数)	Y _{n-1} -Y _{n+1}	+	-	+	-		
35	-152,843.880	^{152,800} 53.880	24.096	-36,057.680	^{36,000} 57.680	7.675			1389.857280			410.835000
34	-152,843.260	53.260	11.346	-36,061.632	61.632	2.358	699.276672					125587080
37	-152,840.434	42.534	12.370	-36,060.038	60.038	8.869	742.670060					377.234046
39	-152,840.890	40.890	15.533	-36,070.501	70.501	8.392	1095.092033					343.148880
22	-152,827.001	27.001	11.726	-36,068.436	68.436	16.494	802.410180			445.354494		
20	-152,829.164	29.164	26.879	-36,054.007	54.007	10.750		1151.654153	313.51300			
							3239.448945	2841.511433	758.867494	1256.805006		
							197.937512			197.937512		
									1/2 = 248.968756			
34	-152,843.260	^{152,800} 53.260	9.082	-36,061.632	^{36,000} 61.632	12.062			559.741824			642.422120
33	-152,841.616	51.616	12.370	-36,072.100	72.100	8.869	891.877000					157.782304
39	-152,840.890	40.890	9.082	-36,070.501	70.501	12.062	640.290082			173.215180		
37	-152,842.434	42.534	12.370	-36,060.038	60.038	8.869	742.670060			377.234046		
							1532.167092	1302.41884	870.449226	1100.204424		
							229.755198			229.755198		
									1/2 = 114.877599			

面積計算書

工区

2

ブロック

7-2

計算者



精算者



備考

没野 609-1
福富 185 三²/₄

点	①	②	③	④	⑤	⑥	③ ×	⑤	② ×	⑥	
	X	X-(定数)	X _{n-1} -X _{n+1}	Y	Y-(定数)	Y _{n-1} -Y _{n+1}	+	-	+	-	
33	-152,841.616	152,800 51.616	+ 22.921	-36,072.100	36,000 72.100	+ 14.462		1652.604100		746.470592	
32	-152,849.922	49.922	- 26.234	-36,082.892	82.892	+ 7.130	2174.588728			355.943860	
24	-152,824.382	25.382	- 22.921	-36,079.230	79.230	- 14.462	1816.030930		367.074484		
22	-152,827.001	27.001	+ 26.234	-36,068.430	68.430	- 7.130		1795.192620	1925.7130		
								3790.619558344	1196720	559.591614	1102.414152
								542.822838			542.822838
									1/2 = 271.411419		
32	-152,849.922	152,800 49.922	+ 22.137	-36,082.892	36,000 82.892	+ 18.968		1824.980204		946.920496	
31	-152,847.519	47.519	- 26.839	-36,098.198	98.198	+ 11.664	2635.536122			554.261616	
26	-152,823.083	23.083	- 22.137	-36,094.556	94.556	- 18.968	2093.186172		437.838344		
24	-152,824.382	25.382	+ 26.839	-36,079.230	79.230	- 11.664		2126.453970	296.055648		
								4728.722274	3961.434174	733.893992	1501.182112
								767.288120			767.288120
									1/2 = 383.644060		

面積計算書

工区

2

ブロック

7-2

計算者

精算者

備考

(保) 2-7-2
福富 186-4

点	① X	② X-(定数)	③ X _{n-1} -X _{n+1}	④ Y	⑤ Y-(定数)	⑥ Y _{n-1} -Y _{n+1}	③ ×	⑤	② ×	⑥
							+	-	+	-
31	-152,847.519	-152,830 17.519 ✓	+ 4.746	-36,098.198	-36,090 8.198 ✓	+ 11.785		38,907.708		206.461.415
8	-152,846.820	15.820 ✓	- 8.049	-36,109.022	19.022 ✓	+ 9.880	153.108.078			156.301.600
9	-152,839.470	9.470 ✓	- 4.746	-36,108.078	12.078 ✓	- 11.785	25,798.188		111.603.950	
30	-152,841.074	11.074 ✓	+ 8.049	-36,097.237	7.237 ✓	- 9.880		58,250.613	109,411.120	
							238,906.266	97,158.321	221.015.070	362.763.015
							141.747.945			141.747.945
								1/2 = 70.873.922		
9	-152,839.470	-152,820 19.470 ✓	- 11.490	-36,108.078	-36,090 12.078 ✓	+ 9.371	207.716.220			192.463.370
10	-152,829.584	9.584 ✓	- 8.274	-36,106.608	16.608 ✓	- 12.313	137.414.592		118.007.792	
29	-152,831.196	11.196 ✓	+ 11.490	-36,095.765	5.765 ✓	- 9.371		66.239.850	104,917.716	
30	-152,841.074	21.074 ✓	+ 8.274	-36,097.237	7.237 ✓	+ 12.313		59,878.938		259.484.162
							345.130.812	126.118.788	222.925.508	441.937.532
							219.012.024			219.012.024
								1/2 = 109.506.012 ✓		

面積計算書

工区

2

ブロック

7-2

計算者



精算者



備考

福富

187-6

188-7

点	①	②	③	④	⑤	⑥	③	×	⑤	②	×	⑥			
	X	X-(定数)	X _{n-1} -X _{n+1}	Y	Y-(定数)	Y _{n-1} -Y _{n+1}	+	-	+	-					
10	-152,829.524	9.524 ✓ -152,820	-8.758	-36,106.608	16.608 ✓ -36,090	+9.780	145.452	264				93.731520			
11	-152,822.438	2.438 ✓	-5.531	-36,105.546	15.546 ✓	-11.907	25.979	395				29.029266			
28	-152,824.053	4.053 ✓	+8.758	-36,094.701	4.701 ✓	-9.780			41.171358			39.638340			
29	-152,831.196	11.196 ✓	+5.531	-36,095.765	5.765 ✓	+11.907			31.886215			133.310772			
									331.432259			73.057573	68.667606	227.042292	
									158.374686 ✓					158.374686 ✓	
														1/2 = 79.187343 ✓	
11	-152,822.438	22.438 ✓ -152,800	-14.979	-36,105.546	15.546 ✓ -36,090	+8.857	232.848	555					198.733366		
12	-152,809.074	9.074 ✓	-11.746	-36,103.558	13.558 ✓	-12.836	159.252	268					116.473864		
27	-152,810.692	10.692 ✓	+14.979	-36,092.709	2.709 ✓	-8.857			40.578111				94.699044		
28	-152,824.053	24.053 ✓	+11.746	-36,094.701	4.701 ✓	+12.836			55.217946				308.744308		
									392.100823				95.796059	211.172908	507.377674
									296.304766 ✓					296.304766 ✓	
														1/2 = 148.152383 ✓	

面積計算書

工区 2

ブロック

7-2

計算者

精算者



備考

福富

186-3

186-5

点	①	②	③	④	⑤	⑥	⑦	⑧	⑨	⑩
	X	X-(定数)	X _{n-1} -X _{n+1}	Y	Y-(定数)	Y _{n-1} -Y _{n+1}	+	-	+	-
12	-152,809.074	-152,790 19.074	-	-12,489	-36,103.458 13.468	+ 9.239	169.325862			176.091168
13	-152,798.203	8.203	-	-12,455	-36,101.942 11.942	- 3.889	149.919265 149.931810			176.110242
14	-152,796.519	6.519	-	0.363	-36,099.669 9.669	- 11.148	3.509847			31.901467
15	-152,797.840	7.840	+	14.173	-36,090.794 0.794	- 6.960				72.667293
27	-152,810.692	20.692	+	11.234	-36,092.709 2.709	+ 12.764				72.673812
							322.764964			54.566400
							322.767519			30.432906
							281.068696			264.112688
							281.081251			440.203856
										440.222970
										281.068696
										281.081251
										140.536328
										1/2 = 140.440625
15	-152,797.840	-152,790 7.840	-	24.035	-36,090.794 10.794	- 11.877	259.433790			93.115680
16	-152,799.048	9.048	+	26.460	-36,082.679 2.679	- 4.352				70.886340
25	-152,824.300	34.300	+	24.035	-36,086.442 6.442	+ 11.877				39.376896
26	-152,823.083	33.083	-	26.460	-36,094.556 14.556	+ 4.352	385.151760			154.833470
							407.381100			407.381100
							644.585550			225.719810
							418.865740			132.492576
										551.358316
										418.865740

面積計算書

工区

2

ブロック

7-2

計算者



精算者



備考

福島 186-1 (11)
" 175-3

点	①	②	③	④	⑤	⑥	③	×	⑤	②	×	⑥
	X	X-(定数)	X _{n-1} -X _{n+1}	Y	Y-(定数)	Y _{n-1} -Y _{n+1}	+	-	+	-		
16	-152,799.048	-152,790 9.048 ✓	-23.858	-36,082.679	-36,070 12.679 ✓	-13.133	302.695582			118.827384		
17	-152,800.442	10.442 ✓	+26.657	-36,073.309	3.309 ✓	-5.604		88.208013		58.516968		
23	-152,825.705	35.705 ✓	+23.858	-36,077.075	7.075 ✓	+13.133		168.795350				468.913765
25	-152,824.300	34.300 ✓	-26.657	-36,086.442	16.442 ✓	+5.604	438.296394					192.217200
							740.789976	257.003363	177.344352	661.136965		
							483.786613 ✓			483.786613 ✓		
									1/2 = 241.8933065 ✓			
17	-152,800.442	-152,800 0.442	-46.422	-36,073.309	-36,050 23.309	-30.129	1082.050398			13.317018		
18	-152,803.500	3.500	+28.341	-36,052.763	2.763	-16.767		78.306183		58.649500		
21	-152,828.783	28.783	+46.422	-36,056.562	6.562	+30.129		304.156944		267.203007		
32	-152,849.922	49.922	-28.341	-36,082.892	32.892	+16.757	932.192172			836.542954		
							2014.242570	382.463127	77.988518	1703.745961		
							1631.779443			1631.779443		
									1/2 = 815.8892215			

面積計算書

工
区

Z

ブ
ロ
ック

7-2

計
算
者



精
算
者



備
考

福富 175-3

点	①	②	③	④	⑤	⑥	③	×	⑤	②	×	⑥
	X	X-(定数)	X _{n-1} -X _{n+1}	Y	Y-(定数)	Y _{n-1} -Y _{n+1}	+	-	+	-		
17	-152 800.442	-152,800 0.442	- 22.205	-36 073.307	-36,050 23.307	24.312	517.576345		10.745904			
18	803.500	3.500	+ 28.341	052.763	2.763	16.757		78.306183	58.649500			
21	828.783	28.783	+ 22.205	056.552	6.552	24.312		145.487160		697.772296		
23	825.705	25.705	- 28.341	077.075	27.075	16.757	767.332575			430.738685		
							1284.708920	223.793313	67.395404	1130.510981		
							1061.115577			1061.115577		
									1/2 = 530.5577885			

面積計算書

工
区

ブ
ロ
ック

7-2

計
算
者

精
算
者

備
考

水路

点	①	②	③	④	⑤	⑥	③	×	⑤	②	×	⑥
	X	X-(定数)	X _{n-1} -X _{n+1}	Y	Y-(定数)	Y _{n-1} -Y _{n+1}	+		-	+		-
5	152856.027	¹⁵²⁸⁴⁰ 16.027 ✓	+ 11.876	36044.004	³⁶⁰⁰⁰ 44.004 ✓	- 62.748			522.591504	105662.96		
6	152857.696	17.696 ✓	- 7.919	36046.274	46.274 ✓	+ 63.336	66443806					1120.793856
7	152848.108	8.108 ✓	- 11.876	36107.340	107.340 ✓	+ 62.748	1274769840					509.760784
8	152845.920	5.920 ✓	+ 7.919	36109.022	109.022 ✓	- 63.336			863.345218	369.615520		
							1641.23646		1395936722	1374277716		1629.554640
							255276924 ✓					255.276924 ✓
									1/2 = 127.638462 ✓			

面積計算書

工
区

ブ
ロ
ック

7-2

計
算
者

精
算
者

備
考

鷺切 I. II

点	①	②	③	④	⑤	⑥	③ ×	⑤	② ×	⑥
	X	X-(定数)	X _{n-1} -X _{n+1}	Y	Y-(定数)	Y _{n-1} -Y _{n+1}	+	-	+	-
19	152805.619	¹⁵²⁸⁰⁵ 0.619 ✓	- 1.978	36038.531	³⁶⁰³⁶ 2.531 ✓	- 0.294	5.006318		0.181986	
I	152805.913	0.913 ✓	+ 2.272	36036.553	0.553 ✓	- 1.684		1.256416	1.537472	
1	152807.891	2.891 ✓	- 0.294	36036.847	0.847 ✓	+ 1.978	0.249018			5.718398
							5.255336	1.256416	1.719478	5.718398
							3.998920 ✓			3.998920 ✓
								1/2 = 1.999460 ✓		
5	152856.027	¹⁵²⁸⁵⁰ 6.027 ✓	+ 0.310	36044.004	³⁶⁰⁴⁴ 0.004 ✓	- 1.976		0.001240	11.989352	
II	152858.006	8.006 ✓	+ 1.669	36044.298	0.298 ✓	+ 2.270		0.497362		18.173620
6	152857.696	7.696 ✓	- 1.979	36046.274	2.274 ✓	- 0.294	4.500246		2.762624	
							4.500246	0.498602	14.171976	18.173620
							4.001644 ✓			4.001644 ✓
								1/2 = 2.000822 ✓		

面積計算書

工区

ブロック

7-2

計算者

精算者

備考

図切位置

点	①	②	③	④	⑤	⑥	③	×	⑤	②	×	⑥
	X	X-(定数)	X _{n-1} -X _{n+1}	Y	Y-(定数)	Y _{n-1} -Y _{n+1}	+		-	+		-
7	152848.108	¹⁵²⁸⁴⁰ 8.108	+ 1.978	36107.340	³⁶¹⁰⁰ 7.340	+ 0.294			14.518520			2.383752
Ⅲ	152847.798	7.798	- 2.288	36109.316	9.316	+ 1.682	21.315008					13.116236
8	152845.820	5.820	+ 0.310	36109.022	9.022	- 1.976			2.796820	11.500320		
							21.315008	17.315	340	11.500320	15.499988	
							3.999668					3.999668
												$\frac{1}{2} = 1.999834$
13	152798.203	¹⁵²⁷⁹⁰ 8.203	- 0.294	36101.941	³⁶¹⁰⁰ 10.941	+ 1.978	29.970654					16.225534
Ⅳ	152796.225	6.225	- 1.684	36101.647	10.647	- 2.272	171.173548			14.143200		
14	152796.519	6.519	+ 1.978	36099.669	99.669	+ 0.294			197.145282			1.916586
							201.144202	197.145282	14.143200	19.142120		
							3.998920					3.998920
												$\frac{1}{2} = 1.999460$

計年
月
算日

計
算
者



檢
查
者



B.NO. 7-2

各筆面積計算書

地番	算式	隅切	地積	摘	要
福富	187-7		141.94	✓	
福富	188-6		275.55	✓	
福富	187-3		152.22	✓	
福富	186-7		194.35	✓	
福富	188-8, 188-12		248.96	✓	
福富	187-8		114.87	✓	
沃野	609-1		271.41	✓	
福富	185-2, 185-4, 185-5		383.64	✓	
保	2-7-2		70.87	✓	
福富	186-4		109.50	✓	
福富	187-6		79.18	✓	
福富	188-7		148.15	✓	
福富	186-3		140.54	✓	
福富	186-5		209.43	✓	
福富	186-1 (小)		241.89	✓	
福富	175-3		530.55	✓	
水路			127.63	✓	
隅切 I		199	✓		
隅切 II		200	✓		
隅切 III		199	✓		
隅切 IV		199	✓		
計			3448.65	✓	
全体			3448.71	✓	
		差	0.06	✓	