

BLOCK NO. 12

街区計算

街区略図

工区

>

ブロック

12

記入者

点検者



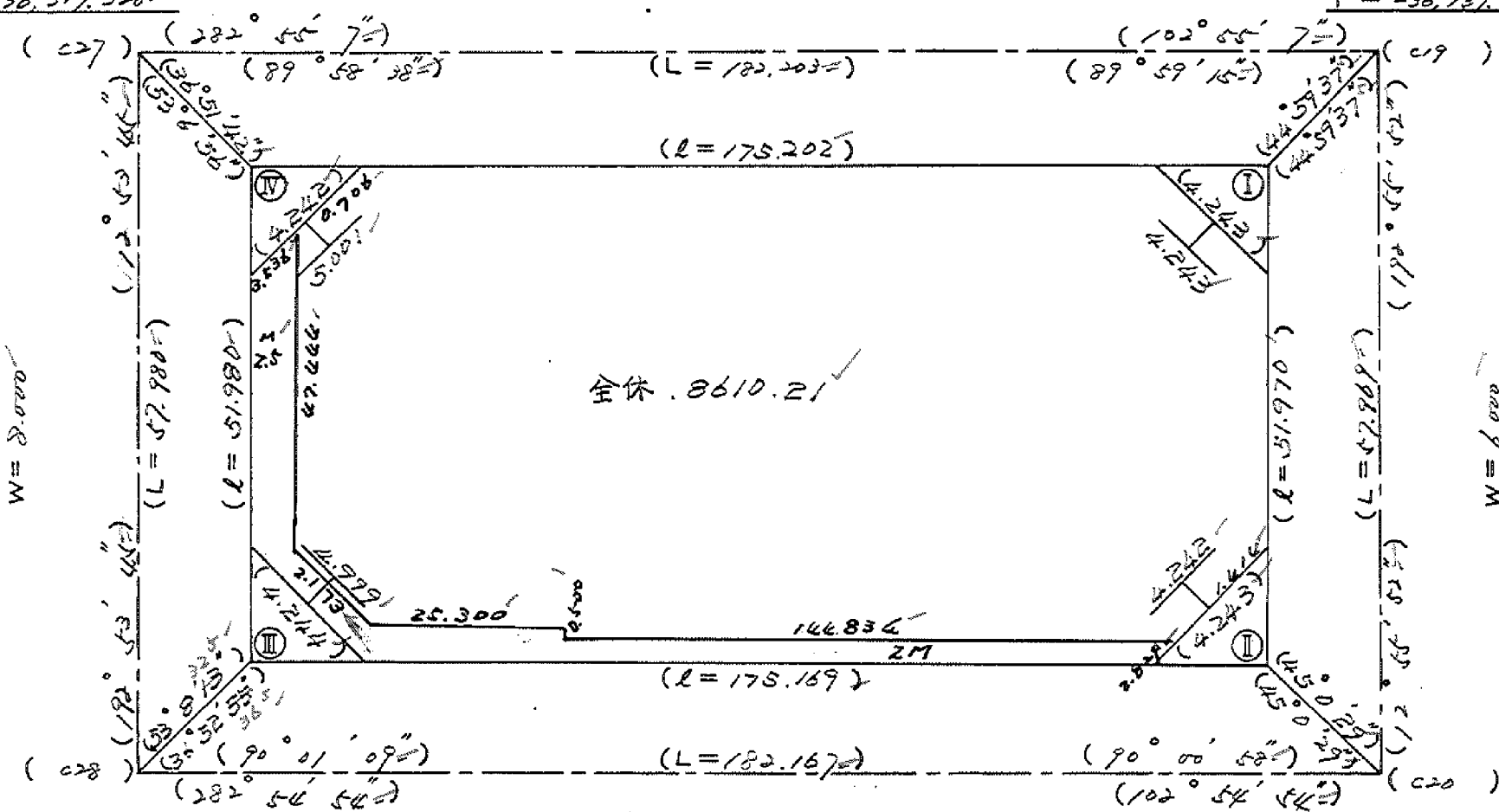
$X = -152,746.787$

$Y = -36,317.328$

$W = 6.000$

$X = -152,787.522$

$Y = -36,129.727$



全体 8610.21

$X = -152,803.206$

$Y = 36,330.288$

$W = 6.000$

$X = -152,844.021$

$Y = -36,152.709$

面積計算書

工
区

2

フ
ロ
ック

12

計
算
者



精
算
者



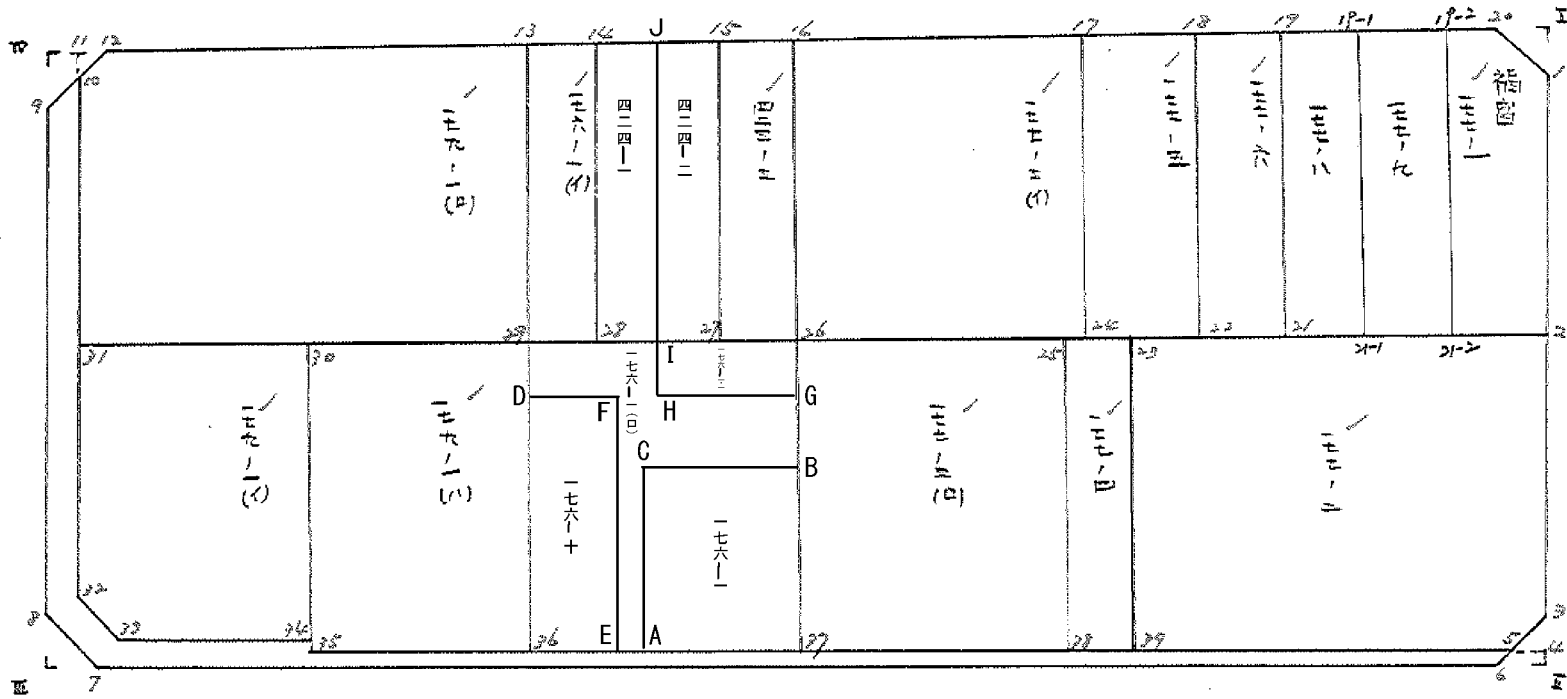
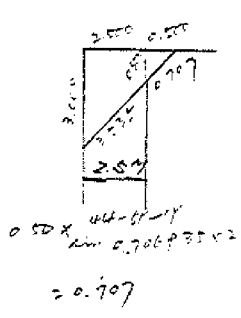
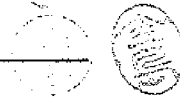
備
考

全体

点	①	②	③	④	⑤	⑥	③ ×	⑤	② ×	⑥
	X	X-(定数)	X _{n-1} -X _{n+1}	Y	Y-(定数)	Y _{n-1} -Y _{n+1}	+	-	+	-
I	-152.789.775	-152.750 39.775	+ 89.821	-36.143.332	-36.100 43.332	-159.137		3892.23572	6329.674175	
II	840.427	90.427	+ 11.500	154.962	54.962	+182.368		632.063000		16490.991136
III	801.275	51.275	- 89.821	325.700	225.700	+159.137	20272.599700			8159.749675
IV	750.606	0.606	-11.500	314.099	214.099	-182.368	2462.138500		110.515008	
							22734.738200	4524.186572	6440.189183	24650.740811
							18210.551628			18210.551628
							1/2 = 9105.275814			
				I	II	III	IV	*路		
				9105.27	- (4.50 + 4.50 + 4.50 + 4.49)	+ 477.07	= 8610.21			

面地計算

BNO. 12



$1.0 \times 0.707 \times 2$
 $= 1.414$

面積計算書

工区

2

ブロック

12

計算者



精算者



備考

福島

177-1

合筆

点	①	②	③	④	⑤	⑥	③ ×	⑤	② ×	⑥
	X	X-(定数)	X _{n-1} -X _{n+1}	Y	Y-(定数)					
1P-2	-152 787.194	-152.780 7.194	-22.446	-36 154.585	-36.140 14.585	-13.923	327.374910			100.162062
20	789.104	9.104	+5.505	146.256	6.256	-10.582		34.439280		96.338528
7	792.699	12.699	+25.026	144.003	4.003	+2.668	131.111111	100.179078		33.880932
21	814.130	34.130	+18.851	148.924	8.924	+16.176	111.111111	168.226324		552.086880
21-2	811.350	31.350	-26.936	160.179	20.179	+5.661	343.541544	111.111111		178.604550
							870.916454	302.844682		196.500590
							568.071772			764.572362
							1/2 = 284.035886			568.071772

面積計算書

工区

2

ブロック

12

計算者



精算者



備考

福富

177-8

177-9

合筆

点	①	②	③	④	⑤	⑥	③ × ⑤	② × ⑥
	X	X-(定数)	X _{n-1} -X _{n+1}	Y	Y-(定数)	Y _{n-1} -Y _{n+1}	+ -	+ -
1P	-152, 781.113	-152.780 1.113	-20.799	-36, 181.096	-36.160 21.096	-21.112	438.775704	23.497636
1P-1	784.672	4.672	+27.916	165.579	5.579	-9.922	155.743364	446.355584
X-1	809.029	29.029	+20.799	171.174	11.174	+21.112	232.408026	612.860248
X-1	805.471	25.471	-27.916	186.691	26.691	+9.922	745.105936	252.723262
							1183.881663	88.151390
							69.853240	865.583510
							795.730270	795.730270
							1/2=397.865135	
1P-1	-152, 784.672	-152.780 4.672	-21.835	-36, 165.579	-36.150 15.579	-16.589	340.167465	77.503808
1P-2	787.194	7.194	+26.878	154.585	4.585	-5.400	123.235630	38.847600
X-2	811.550	31.550	+21.835	160.179	10.179	+16.589	222.258465	523.382950
X-1	809.029	29.029	-26.878	171.174	21.174	+5.400	569.114772	156.756600
							909.282237	345.494095
							116.351408	682.139530
							563.788142	563.788142
							1/2=281.894071	

面積計算書

工区 2 12 計算者 精算者 備考 福留 117-5 合筆
" 177-6

項	①	②	③	④	⑤	⑥	③ ×	⑤	② ×	⑥
	X	X-(定数)	X _{n-1} -X _{n+1}	Y	Y-(定数)	Y _{n-1} -Y _{n+1}	+	-	+	-
17	-152, 777.123	-152.770 7.123	-22.158	-36, 198.492	-36.180 18.492	-15.193	409.745736		108.219739	
18	779.325	9.325	+26.560	188.892	8.892	-4.005		236.171520	37.346625	
22	803.683	33.683	+22.158	194.487	14.487	+15.193		321.002946		511.745819
24	801.483	31.483	-26.560	204.085	24.085	+4.005	639.697600			126.089415
							1049.443336	557.174466	145.563664	637.835234
							492.268870			492.268870
							$\frac{1}{2} = 246.134435$			
18	-152, 779.325	-152.770 9.325	-22.570	-36, 188.892	-36.180 8.892	-13.391	200.692440		124.871075	
19	781.113	11.113	+26.146	181.096	1.096	-2.201		28.656016	24.459713	
21	805.471	35.471	+22.570	186.691	6.691	+13.391		151.015870		474.992161
22	803.683	33.683	-26.146	194.487	14.487	+2.201	378.777102			74.135283
							579.469542	179.671886	149.330788	549.128444
							399.797656			399.797656
							$\frac{1}{2} = 199.898828$			

面積計算書

工区

2

ブロック

12

計算者



精算者



備考

福岡

177-1

177-2

点	①	②	③	④	⑤	⑥	③ × ⑤	② × ⑥		
	X	X-(定数)	X _{n-1} -X _{n+1}	Y	Y-(定数)	Y _{n-1} -Y _{n+1}	+ -	+ -		
1	¹⁵² 772.689	-152.750 42.699	+25.026	⁻³⁵ 144.003	-35.100 44.003	+2.668	1101.219078	113.920932		
2	814.130	64.130	+12.772	148.924	48.924	+42.688	624.857328	2737.581440		
21	805.471	55.471	-33.017	186.691	86.691	+32.172	2862.276747	1784.613012		
19	781.113	31.113	-16.367	181.096	81.096	-40.435	1327.298232	1258.054155		
20	789.104	39.104	+11.586	146.256	46.256	-37.093	535.922016	1450.484672		
							4189.574977	2261.998422	2708.538827	4636.113384
							1927.576557		1927.576557	
							$\frac{1}{2} = 963.7882785$			
2	⁻¹⁵² 814.130	-152.800 14.130	+35.261	⁻³⁶ 148.924	-36.140 8.924	-46.482	314.669164	656.790660		
3	837.503	37.503	+24.124	154.291	14.291	+6.565	344.756084	246.207193		
5	838.254	38.254	-10.915	155.489	15.489	+52.069	169.062435	1992.847526		
39	826.588	26.588	-36.012	206.360	66.360	+43.284	2389.756320	1204.010992		
23	802.242	2.242	-12.458	200.773	60.773	-57.436	757.110034	128.771512		
							3315.928789	659.425248	785.562172	3444.065713
							2656.563541		2656.563541	
							$\frac{1}{2} = 1328.2817705$			

面積計算書

工区

2

ブロック

12

計算者



精算者



備考

福富

177-4

177-3(ア)

点	①	②	③	④	⑤	⑥	⑦ ×	⑧	⑨ ×	⑩	
	X	X-(定数)	X _{n-1} -X _{n+1}	Y	Y-(定数)	Y _{n-1} -Y _{n+1}	+	-	+	-	
39	-152 826.588	-152.800 26.588	+23.274	-36 206.360	-36.200 6.360	+10.263		148.022640		272.872644	
38	825.516	25.516	-25.418	211.036	11.036	-0.911	280.513048		23.245076		
25	801.170	1.170	-23.274	205.449	5.449	-10.263	126.820026		12.007710		
23	802.242	2.242	+25.418	200.773	0.773	+0.911		19.648114		2.042462	
								407.333074	167.670754	35.252786	274.915106
								239.662320			239.662320
								1/2 = 119.831160			
38	-152 825.516	-152.790 35.516	+17.910	-36 211.036	-36.200 11.036	+33.636		197.654760		1195.326496	
37	819.080	29.080	-30.782	239.105	39.105	+22.485	1203.730110			653.863800	
26	794.734	4.734	-17.910	233.521	33.521	-33.656	600.361110		189.327504		
25	801.170	11.170	+30.782	205.449	5.449	-22.485		167.731118	251.157450		
								1804.071220	365.385878	410.484954	1849.190296
								1438.705342			1438.705342
								1/2 = 719.352671			

面積計算書

工区

2

ブロック

12

計測者

精算者



備考

福園

176-1 (P)

177-1 (11)

点	①	②	③	④	⑤	⑥	③ ×	⑤	② ×	⑥
	X	X-(定数)	X _{n-1} -X _{n+1}	Y	Y-(定数)	Y _{n-1} -Y _{n+1}	+	-	+	-
37	-152.7 819.080	-152.780 39.080	+17.998	-36.1 279.105	-36.230 9.105	+33.263		163.871790		1299.918040
36	812.732	32.732	-30.693	266.784	36.784	+22.097	1129.011312			723.279004
29	788.387	8.387	-17.998	261.202	31.202	-33.263	561.573596		278.976781	
26	794.734	14.734	+30.693	233.521	3.521	-22.097		108.070053	325.577198	
							1670.584908	271.941843	604.553979	2023.197044
							1418.643065			1418.643065
							1/2 = 709.3215325			
36	-152.7 812.732	-152.780 32.732	+17.495	-36.1 266.784	-36.260 6.784	+35.456		118.626020		1160.545792
35	805.882	25.882	-31.196	286.658	36.658	+24.299	1143.582968			628.906718
30	781.536	1.536	-17.495	291.083	31.083	-35.456	543.797685		54.466416	
29	788.387	8.387	+31.196	261.202	1.202	-24.299		37.497592	203.795713	
							1687.380053	156.123672	258.256129	1789.452510
							1531.196381			1531.196381
							1/2 = 765.5981905			

座標法面積計算 (176-1(口))

測点	X	Δx	Y	Δy	(+) F ₁	(-) F ₂
					Δx · Δy	Δx · Δy
			(-200)			
A	-815.537		-254.554			
		+2.805		-121.338	340.753090	
36	-812.772		-266.786			
		+24.345		-127.986	3115.819170	
29	-788.387		-261.202			
		-6.349		-94.723		601.206881
26	-774.734		-233.521			
		-10.115		-69.362		701.596630
B	-804.849		-235.841			
		+3.543		-87.131	308.705133	
C	-801.306		-251.290			
		-14.231		-105.866		1506.265964
A	-815.537		-254.554			
-				-		
-				-		
-				-		
-				-		
-				-		
-				-		
Σ =					3764.877393	2809.069475
F = (F ₁) ~ (F ₂) =						955.809918
計算者					F / 2 =	477.903959
点検者					× 0.3025 =	

座標法面積計算 (176-10)

測点	X	Δx	Y	Δy	(+) F ₁	(-) F ₂
					Δx · Δy	Δx · Δy
			(-250)			
D	-793.725		-262.426			
		-2.615		-13.448		35.166520
F	-796.340		-251.022			
		-19.007		-6.402		121.682814
E	-815.347		-255.380			
		+2.615		-22.164	57.958860	
36	-812.732		-266.784			
		+19.007		-29.210	555.194470	
D	-793.725		-262.426			
		-		-		
		-		-		
		-		-		
		-		-		
		-		-		
		-		-		
		-		-		
		-		-		
		-		-		
			$\bar{z} =$		613.157330	156.849734
			$F = (F_1) \sim (F_2) =$			456.303996
計算者				$F / 2 =$		228.151998
点検者				$\times 0.3025 =$		(69.01 坪)

座標法面積計算 (176-1 (B))

測点	X	△x	Y	△y	(+) F ₁ △x · △y	(-) F ₂ △x · △y
			(-270)			
2P	-788.387		-261.202			
		-6.347		-34.723		220.386881
26	-794.734		-233.521			
		-10.115		-9.362		94.696630
B	-804.849		-235.841			
		+3.543		-27.131	96.125133	
C	-801.306		-251.290			
		-14.231		-45.844		652.405964
A	-815.537		-259.554			
		+0.190		-49.934	9.487460	
F	-815.347		-255.380			
		+19.007		-46.402	881.962814	
F	-796.340		-251.022			
		+2.615		-53.448	139.766520	
D	-793.725		-262.426			
		+5.338		-63.628	339.646264	
29	-788.387		-261.202			
			$\bar{Z} =$		1466.988191	967.489475
			$F = (F_1) \sim (F_2) =$			499.498716
計算者				$F / 2 =$		249.749358
点検者				$\times 0.3025 =$		

座標法面積計算 (176-11)

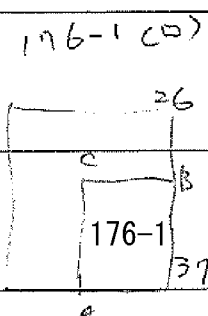
測点	X	Δx	Y	Δy	(+) F ₁	(-) F ₂
					Δx · Δy	Δx · Δy
			(-200)			
I	-791.461		-247.796			
		-3.273		-81.317		266.150541
2b	-794.734		-233.521			
		-5.339		-68.267		369.477513
G	-800.073		-239.746			
		+3.273		-83.767	274.169391	
H	-796.800		-249.021			
		+5.339		-96.817	516.905963	
I	-791.461		-247.796			
		-		-		
		-		-		
		-		-		
		-		-		
		-		-		
		-		-		
		-		-		
		-		-		
		-		-		
		-		-		
					$\bar{Z} =$	
					791.075354	630.628054
					$F = (F_1) \sim (F_2) =$	
					160.407300	
					$F / 2 =$	
					80.223650	
					$\times 0.3025 =$	
計算者						
点検者						

座標法面積計算 (176-1)

測点	X	Δx	Y	Δy	(+) F ₁	(-) F ₂
					$\Delta x \cdot \Delta y$	$\Delta x \cdot \Delta y$
			(-200)			
29	-788.387		-261.202			
		-3.074		-108.998		335.059852
I	-791.461		-247.796			
		-5.339		-96.817		516.905963
H	-796.800		-249.021			
		-3.273		-83.767		274.169391
G	-800.073		-234.746			
		-4.776		-70.587		337.123512
B	-804.849		-235.841			
		+3.543		-87.131	308.705133	
C	-801.306		-251.290			
		-14.231		-105.844		1506.265964
A	-815.537		-254.554			
		+0.190		-109.934	20.887460	
E	-815.347		-255.380			
		+19.007		-106.402	2022.382814	
F	-796.340		-251.022			
		-2.615		-113.448	296.666520	
D	-793.725		-262.426			
		+5.338		-123.628	659.926269	
29	-788.387		-261.202			
				$\bar{z} =$	3308.568191	3969.524682
				F = (F ₁) ~ (F ₂) =		339.047509
計算者				F / 2 =		169.5237545
点検者				× 0.3025 =		分筆後の座標なし

座標法面積計算 (176-1)

測点	X	Δx	Y	Δy	(+) F ₁	(-) F ₂
					$\Delta x \cdot \Delta y$	$\Delta x \cdot \Delta y$
			(-200)			
A	-815.537		-254.554			
		+14.231		-105.844	1506.265964	
C	-801.306		-251.290			
		-3.543		-87.131		308.705133
B	-804.849		-235.841			
		-14.231		-74.946		1066.556526
37	-819.086		-239.105			
		+3.543		-93.659	331.233237	
A	-815.537		-254.554			
-	-	-	-	-	-	-
-	-	-	-	-	-	-
-	-	-	-	-	-	-
-	-	-	-	-	-	-
-	-	-	-	-	-	-
-	-	-	-	-	-	-
-	-	-	-	-	-	-
-	-	-	-	-	-	-
$\bar{z} =$					1838.099701	1375.261659
F = (F ₁) ~ (F ₂) =						462.838142
計算者					F / 2 =	231.419071
点検者					× 0.3025 =	231/42



面積計算書

工区 2

ブロック

12

計算者



精算者



備考

補償

17P-1 (イ)

17P-1 (ロ)

点	①	②	③	④	⑤	⑥	③ × ⑤		② × ⑥		
	X	X-(定数)	X _{n-1} -X _{n+1}	Y	Y-(定数)	Y _{n-1} -Y _{n+1}	+	-	+	-	
34	-152, 805.396	-152.770 35.396	+18.205	-36, 296.547	-36.290 6.547	+30.124		119.128135		1066.269104	
33	799.741	29.741	-7.496	321.207	31.207	+25.815	233.927672			767.763915	
32	797.900	27.900	-24.203	322.362	32.362	-3.965	783.257486		110.623500		
31	775.538	5.538	-16.364	317.242	27.242	-31.279	445.788088		173.223102		
70	781.536	11.536	+29.858	291.083	1.083	-20.695		32.336214	238.737520		
								1462.973246	151.524349	522.584122	1834.033019
								1311.448897			1311.448897
								$\frac{1}{2} = 655.7244485$			
31	-152, 775.538	-152.750 25.538	-36.735	-36, 317.242	-36.250 67.242	+30.571	2470.136870			1291.482198	
10	751.652	1.652	-24.261	311.773	61.773	-6.067	1498.674753		10.022684		
12	751.277	1.277	+12.369	311.175	61.175	-56.158		756.673575	71.713766		
13	764.021	14.021	+37.110	255.615	5.615	-49.973		208.372650	200.671433		
29	788.387	38.387	+11.517	261.202	11.202	+61.627		129.013434		2365.675649	
								3968.809623	1094.059659	782.407883	3657.157847
								2874.749964			2874.749964
								$\frac{1}{2} = 1437.374982$			

面積計算書

工区

2

ブロック

12

計算者



精算者



備考

福島 176-1 (1)

424

点	①	②	③	④	⑤	⑥	③ ×	⑤	② ×	⑥
	X	X-(定数)	X _{n-1} -X _{n+1}	Y	Y-(定数)	Y _{n-1} -Y _{n+1}	+	-	+	-
13	-152 764.021	-152.760 4.021	-22.690	-36, 255.615	-36.240 15.615	-12.898	354.304350		51.862858	
14	765.697	5.697	+26.042	248.304	8.304	-1.723		216.252768	9.815931	
28	790.063	30.063	+22.690	253.892	13.892	+12.898		315.209480		387.752574
29	788.387	28.387	-26.042	261.202	21.202	+1.723	552.142484			48.910801
							906.446834	531.462248	61.678789	436.663375
							374.984586			374.984586
							$\frac{1}{2} = 187.492293$			
14	-152 765.697	-152.760 5.697	-21.616	-36, 248.304	-36.230 18.304	-17.577	395.659264		100.126169	
15	768.447	8.447	+27.115	236.315	6.315	-6.899		171.231225	54.069247	54.069247
27	792.812	32.812	+21.616	241.905	11.905	+17.577		257.295248		576.736524
28	790.063	30.063	-27.115	253.892	23.892	+6.899	647.831580	257.338480		192.373137
							1043.490844	428.569705	184.205416	769.168787
							614.921139		134.188522	759.109661
							614.921139			614.921139
							$\frac{1}{2} = 307.4821855$			

座標法面積計算 (424-1)

測点	X	Δx	Y	Δy	(+)	(-)
					F ₁	F ₂
					$\Delta x \cdot \Delta y$	$\Delta x \cdot \Delta y$
			(-200)			
14	-765.697		-248.304			
		-1.398		-90.511		126.534378
T	-767.095		-242.207			
		-24.366		-90.003		2193.013098
I	-791.461		-247.796			
		+1.398		-101.688	142.159824	
28	-790.063		-253.892			
		+24.366		-102.196	2490.107736	
14	-765.697		-248.304			
					$\bar{Z} =$	2632.26756 2319.547476
					F = (F ₁) ~ (F ₂) =	312.720089
計算者					F / 2 =	156.360042
点検者					× 0.3025 =	

座標法面積計算 (424-2)

測点	X	Δx	Y	Δy	+	F ₁	-	F ₂
					Δx · Δy	Δx · Δy		
			(-200)					
	T - 767.095		-242.207					
		- 1.352		- 28.522			106.161744	
	K - 768.447		-276.315					
		- 24.365		- 28.218			1905.781570	
	27 - 792.812		-241.903					
		+ 1.351		- 89.699		121.183349		
	I - 791.461		-247.796					
		+ 24.766		- 90.003		2193.013098		
	J - 767.095		-242.207					
$\bar{Z} =$						2314.196467	2011.943314	
F = (F ₁) ~ (F ₂) =							302.263133	
計算者						F / 2 =	151.1265665	
点検者						× 0.3025 =		

面積計算書

工区

2

ブロック

12

計算者

精算者

備考

福富

423-3

177-3(1)

点	①	②	③	④	⑤	⑥	③	×	⑤	②	×	⑥
	X	X-(定数)	X _{n-1} -X _{n+1}	Y	Y-(定数)	Y _{n-1} -Y _{n+1}	+	-	+	-		
15	-152, 768.447	-152.760 8.447	-22.442	-36, 236.315	-36.220 16.316	-13.971	366.163672			118.013037		
16	770.370	10.370	+26.287	227.932	7.932	-2.795		208.508484		28.984750		
26	794.734	24.734	+22.442	233.521	13.521	+13.971		303.438282				485.268114
27	792.812	32.812	-26.287	241.903	21.903	+2.795	575.764161					91.709540
							941.928833	511.946766	146.997987	576.978254		
							429.977267					429.981067
							1/2 = 214.9885335					
16	-152, 770.370	-152.770 0.370	-17.611	-36, 227.932	-36.190 37.932	-35.029	668.020452			12.960730		
17	777.123	7.123	+31.113	198.492	8.492	-23.847		264.211596		169.862184		
24	801.483	31.483	+17.611	204.085	14.085	+35.029		248.050935				1102.818007
26	794.734	24.734	-31.113	233.521	43.521	+23.847	1354.068873			589.831698		
							2022.089325	512.262531	182.822911	1692.649705		
							1509.826794			1509.826794		
							1/2 = 754.913397					

面積計算書

工
区

2

ブ
ロ
ック

12

計算者



精算者



備考

陽切 I. II

点	①	②	③	④	⑤	⑥	③ × ⑤	② × ⑥
	X	X-(定数)	X _{n-1} -X _{n+1}	Y	Y-(定数)	Y _{n-1} -Y _{n+1}	+ -	+ -
20	-152,789.104	-152,780 9.104	-2.924	-36,146.256	-36,140 6.256	-0.671	18.292544	6.108784
I	-152,789.775	9.775	+3.595	-36,143.332	3.332	-2.253	11.978540	22.023075
1	-152,792.699	12.699	-0.671	-36,144.003	4.003	+2.924	2.686013	37.131876
							20.978557	11.978540
							9.000017	28.131859
								37.131876
								9.000017
								1/2 = 4.5000085
3	-152,837.503	-152,830 7.503	+0.671	-36,154.291	-36,150 4.291	-2.924	2.879261	21.938772
II	-152,842.427	10.427	+2.253	-36,154.962	4.962	+3.595	11.179386	37.485065
6	-152,839.786	9.786	-2.924	-36,157.886	7.886	-0.671	23.058664	6.546276
							23.058664	14.058647
							9.000017	28.485048
								37.485065
								9.000017
								1/2 = 4.5000085

面積計算書

工区

2

ブロック

12

計測者



精算者



備考

陽功

Ⅱ

Ⅳ

点	①	②	③	④	⑤	⑥	③	×	⑤	②	×	⑤
	X	X-(定数)	X _{n-1} -X _{n+1}	Y	Y-(定数)	Y _{n-1} -Y _{n+1}	+	-	+	-		
7	-152,801.946	-152,790 11.946	-2.924	-36,322.775	-36,320 2.775	-0.670	8,114,100		2,003,820			
8	-152,798.351	2.351	-0.671	-36,325.020	5.030	+2.925	3,375,130					24,426,675
Ⅲ	-152,801.275	11.275	+3.595	-36,325.700	5.700	-2.255		20,491,500	25,425,125			
							11,489,230	20,491,500	33,428,945	24,426,675		
								9,002,270	9,002,270			
								1/2 = 4,501,135				
9	-152,753.530	-152,750 3.530	-0.671	-36,314.769	-36,310 4.769	+2.924	3,199,999					10,321,720
Ⅳ	-152,750.606	0.606	-2.253	-36,314.099	4.099	-3.594	9,235,047		2,177,964			
12	-152,751.277	1.277	+2.924	-36,311.175	1.175	+0.670		3,435,700				0,255,590
							12,425,046	3,435,700				11,773,10
							2,999,346					2,999,346
								1/2 = 4,499,673				

面積計算書

工
区

Z

ブ
ロ
ック

12

計
算
者



精
算
者



備
考

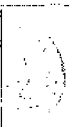
水路

点	①	②	③	④	⑤	⑥	③ × ⑤		② × ⑥		
	X	X-(定数)	X _{n-1} -X _{n+1}	Y	Y-(定数)	Y _{n-1} -Y _{n+1}	+	-	+	-	
10	-152.751 751.652	-152.750 1.652	-44.370	-36.150 711.773	-36.150 161.773	-7.593	7177.868010			12.543636	
9	753.530	3.330	+46.699	714.769	164.769	+13.257		7694.547531			46.797210
8	798.351	48.351	+48.416	725.030	175.030	+8.006		8474.252480			387.098106
7	801.946	51.946	+41.405	722.775	172.775	-167.144		7153.748875	8682.462224		
6	839.756	89.756	+36.308	157.886	7.886	-167.286		286.324888	13014.922216		
5	838.254	88.254	-33.874	155.489	5.489	+138.772	185.934386				12247.184088
25	805.882	55.882	-32.858	296.658	146.658	+141.058	4818.888364				7882.603156
24	805.396	55.396	-6.141	296.547	146.547	+24.549	899.945129				1359.916404
23	799.741	49.741	-7.496	321.207	171.207	+25.815	283.367672				1284.063915
22	797.900	47.900	-48.089	322.362	172.362	-9.434	8288.716218			451.828600	
			172.828				331.457	22654.719979	23608.873774	24161.816676	23207.662879
										954.153797	954.153797
										1/2 = 477.0768985	

計年月
算日

計算者

検査者



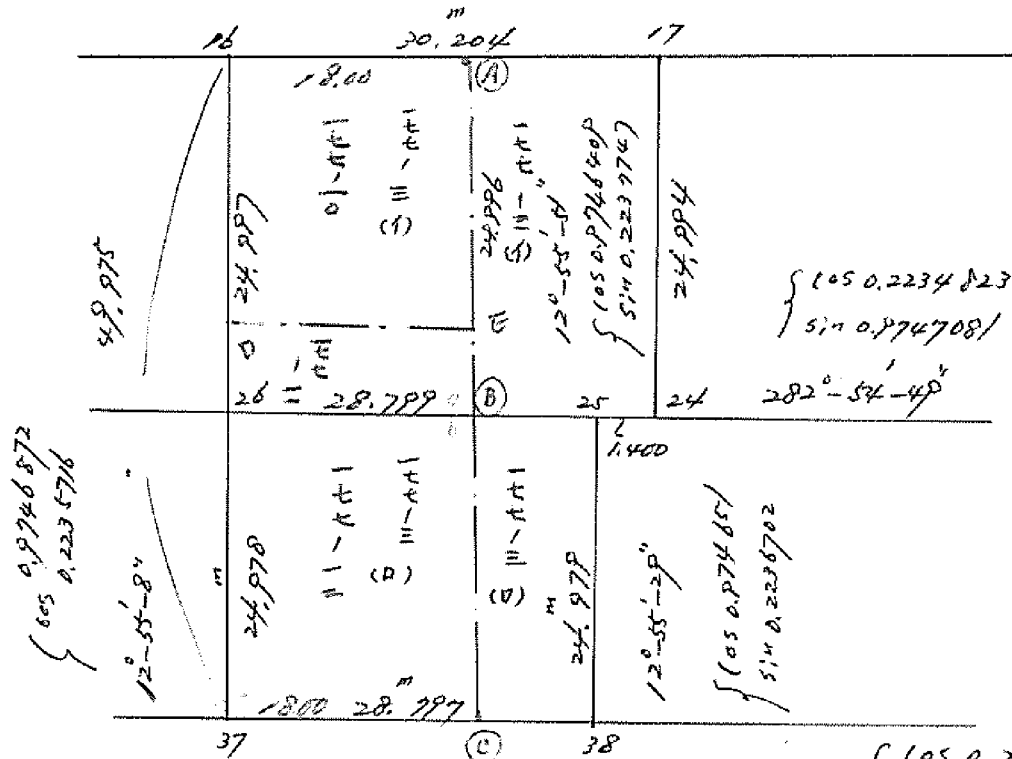
B.NO. 12

各筆面積計算書

地番	算式	隅切	地積	摘要
福富 177-1	福富 177-1 177-9 177-8		963.78	} 284.03. 281.89. 597.86
" 177-2			1328.25	
" 177-4			119.83	
" 177-3(B)			719.35	
" 176-1(B)			709.32	
" 179-1(A)			765.59	
" 179-1(B)			655.72	
" 177-1(B)			1437.37	
" 176-1(A)			187.49	
" 424			307.48	
" 423-3			214.98	
" 177-3(A)			754.91	
" 177-5			246.13	
" 177-6			199.89	
水路	4.77.07			
計			9105.13	
金休			9105.27	
差			0.14	

福涌 177-3

$$102^{\circ}-55'-06.7 \begin{cases} \cos 0.22356549 \\ \sin 0.97468863 \end{cases}$$



- x y
- (16) -152.770.370. -36.227.932
 - (17) -152.777.123 -36.198.492.

- (26) -152.794.734 -36.233.621
- (25) -152.801.170 -36.205.449
- (24) -152.801.483. -36.204.085.

- (37) -152.819.080. -36.239.105
- (38) -152.825.516 -36.211.036

177-3 (9) 754.913397 ^{m²}

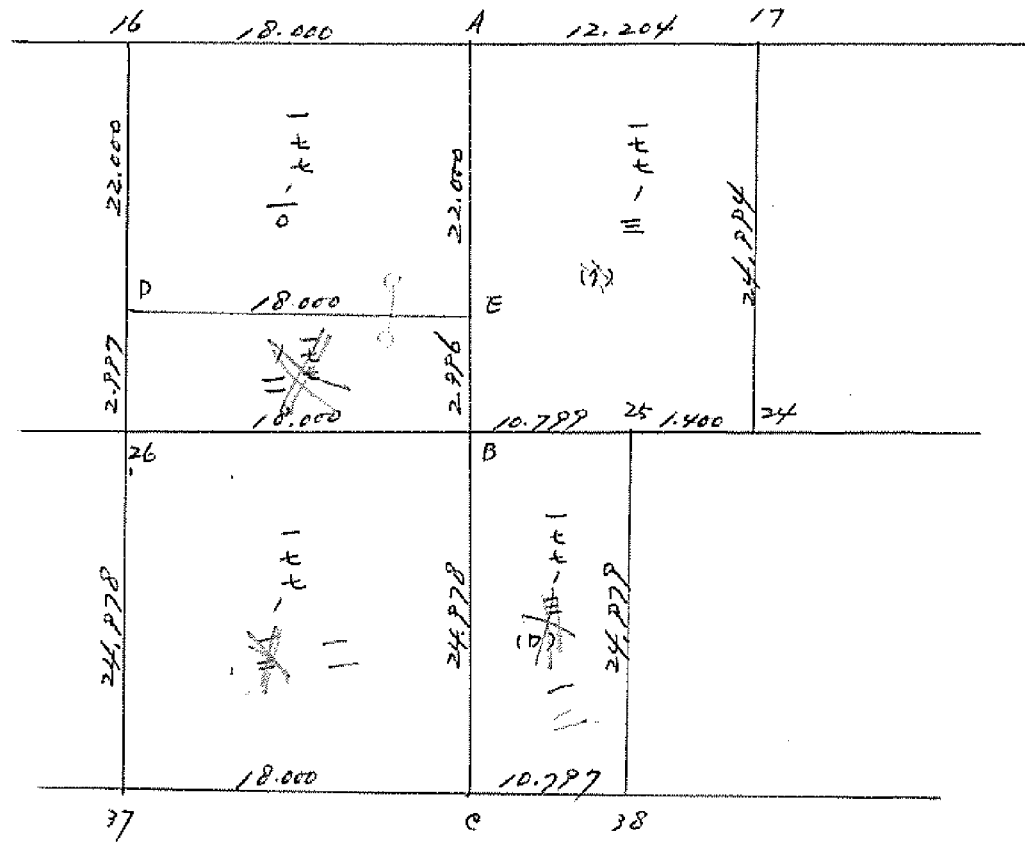
177-3 (10) 719.352671 ^{m²}

1.474.26 ^{m²}

$$102^{\circ}-54'-55'' \begin{cases} \cos 0.223510 \\ \sin .9747015 \end{cases}$$

49.974
- 24.978

24.996



地番	面積
177-3 42	304.96 m ²
177-3 12	269.72
177-40	396.01
177-11	53.93
177-11	449.62
11	1474.24

面積計算書

工
区

フ
ロ
ツ
ク

計
算
者

精
算
者

備 197

号 177-10 177-11 合筆

地番	点	① X	② X-(定数)	③ X _{n-1} -X _{n,1}	④ Y	⑤ Y-(定数) -210-	⑥ Y _{n-1} -Y _{n,1}	+	×	⑦ -	⑧ +	×	⑨ -
177-10	16	770.370	0.370	17.419	227.932	17.932	22.464	312.3575					8.31168
	A	774.394	4.394	-25.467	240.387	0.387	12.626			9.853729			55.478644
	E	775.837	25.837	-17.419	215.306	5.306	-22.464			92.425214			580.40236
	D	771.813	21.813	25.467	232.851	22.851	-12.626	581.94641					275.41090
								874.30391	102.28094	63.790324	855.81329		
								792.02297		792.02297			
								396.01148		396.01148			
177-11	D	771.813	1.813	-1.103	232.851	22.851	18.215			25.204653			33.023795
	E	775.837	5.837	-6.944	215.306	5.306	16.876			36.844864			90.505212
	B	778.757	8.757	1.103	215.975	5.975	-18.215	6.590425					159.50875
	26	774.734	4.734	6.944	232.521	23.521	-16.876	163.72982					79.890984
								169.92024	62.049517	131.52907	239.39973		
								107.87070		107.87066			
								53.92536		53.92533			

面積計算書

工区

ブロック

計算者

測量者

備考

197

地番

一七七一三

一七七一三(10)

点	① X -790	② X-(定数)	③ X _{n-1} -X _n	④ Y -270-	⑤ Y-(定数)	⑥ Y _{n-1} -Y _n	③ × ⑤	② × ⑥	
26	774.734	4.734	20.323	233.521	23.130	478 017 28	109.49742		
B	798.757	8.757	-28.369	215.975	5.975	11.961	169.50477	104.74247	
C	823.103	33.103	-20.323	221.560	11.560	-23.130	234.93358	765.67239	
37	819.080	29.080	28.369	239.105	29.105	-11.961	825.67974	347.82588	
						1303.697	404.43865	214.23989	1113.4982
						899.2584		899.2584	
						449.6292	449.6292	449.6292	
	-790			-200					
B	798.757	8.757	21.933	215.975	15.975	16.111	350.37967	141.08402	
25	801.170	11.170	-26.759	205.449	5.449	4.939	145.80979	55.16863	
38	825.516	35.516	-21.933	211.036	11.036	-16.111	242.05258	572.19827	
C	823.103	33.103	26.759	221.560	21.560	-4.939	576.92404	163.49571	
						927.30371	387.86237	196.25265	735.69398
						539.44134		539.44133	
						269.72067		269.72066	

面積計算書

工
区

ブ
ロ
ック

計
算
者

精
算
者

備
考

⑤
三
サ
ー
ト

点	①	②	③	④	⑤	⑥	③ × ⑤		② × ⑥	
	$\frac{778}{X}$	X - (定数)	$X_{n-1} - X_{n+1}$	$-Y_{p0}$	Y - (定数)	$Y_{n-1} - Y_{n+1}$	+	-	+	-
A	774.384 777.123	4.384	21.634	210.387 178.482	20.387	17.483	441.05235		76.820302	
17	777.123	7.123	-27.088	198.482	8.482	6.302		230.03878	44.889146	
24	801.483	31.483	-21.634	204.085	14.085	-17.483		304.71488		550.41728
B	778.757	28.757	27.088	215.875	25.875	-6.302	703.63677			181.22661
							114.8881	534.75467	121.70844	731.64388
							609.8345		609.8345	
							304.86725		304.86722	
								304.97		