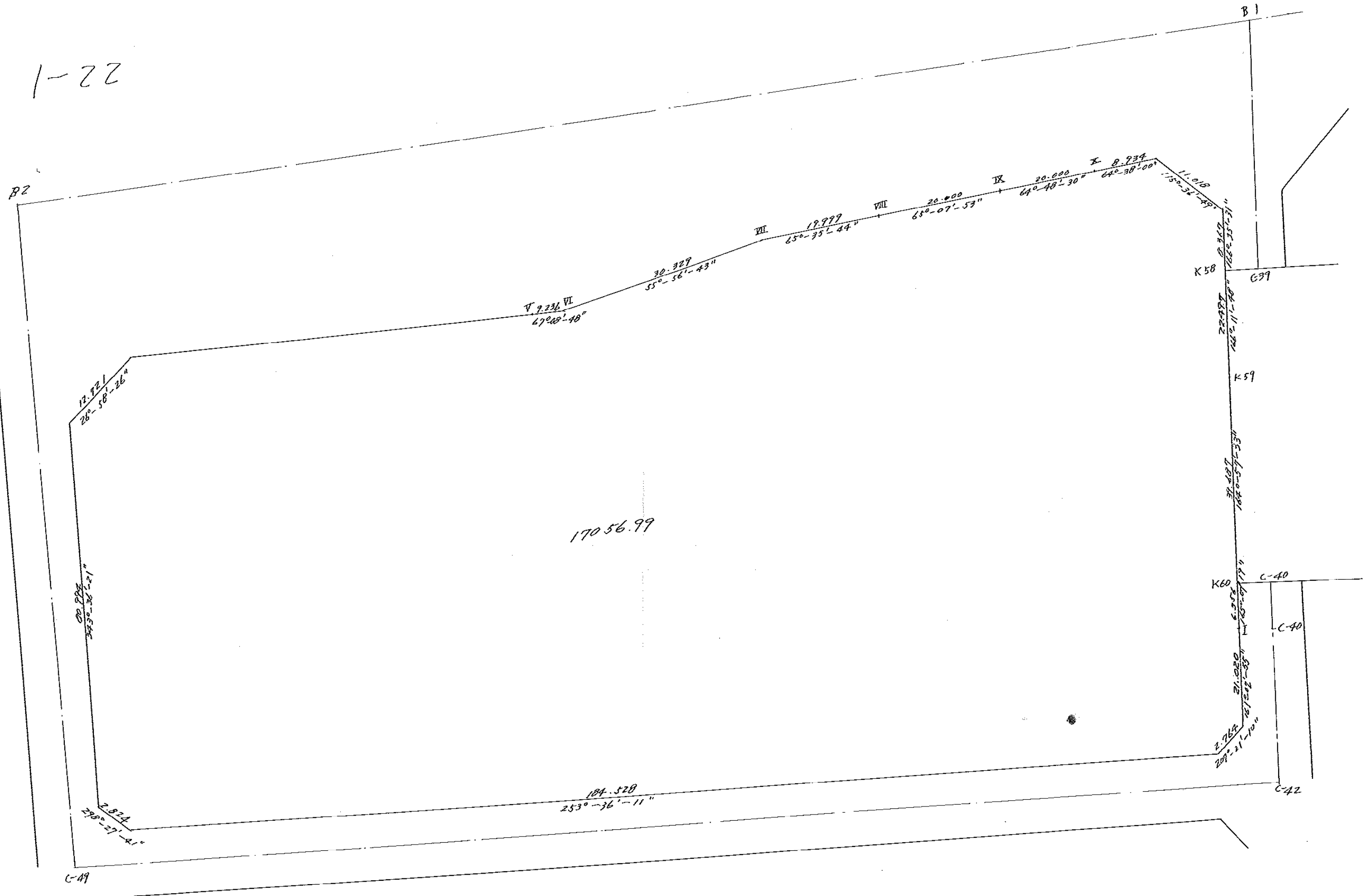
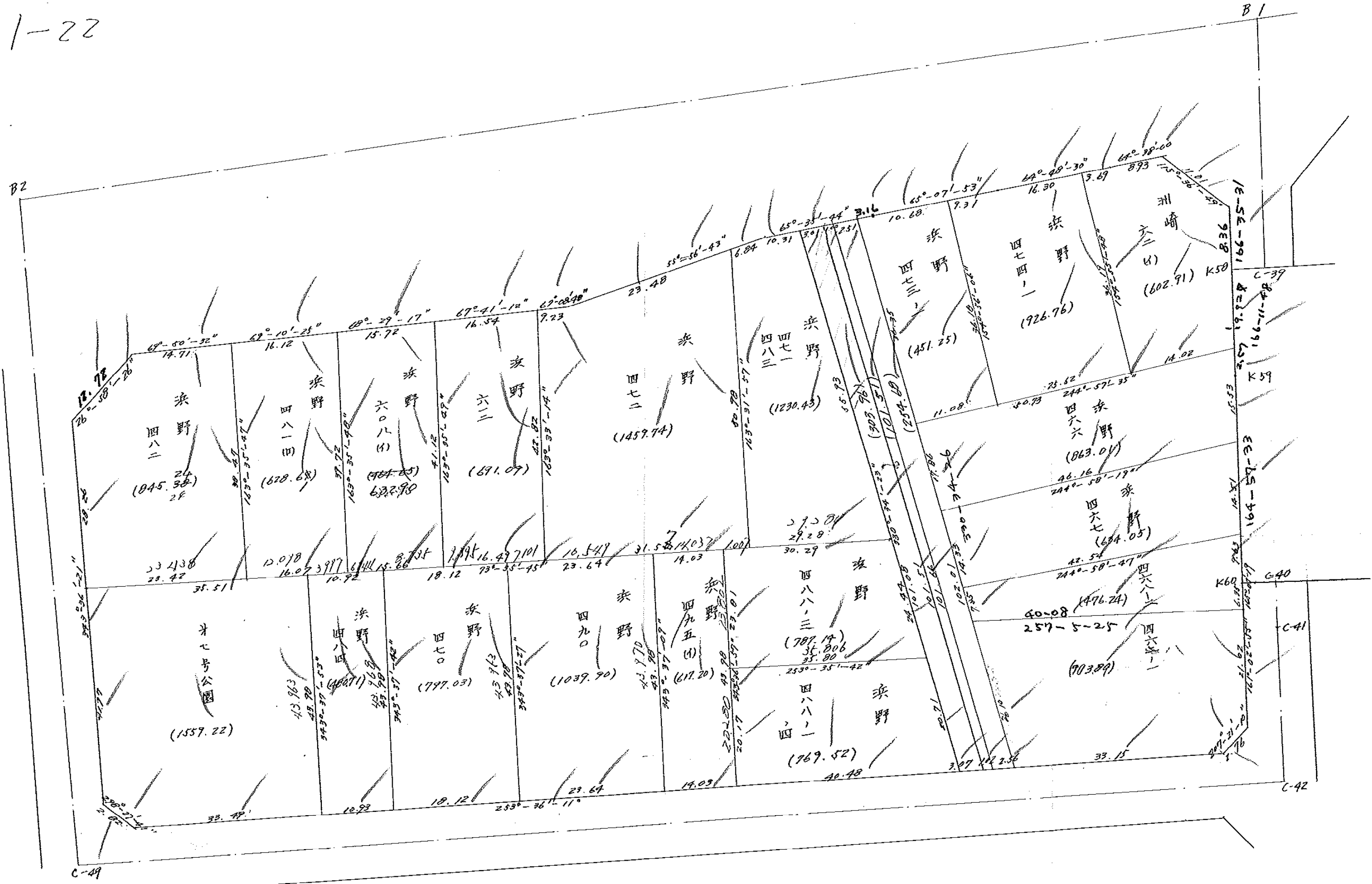


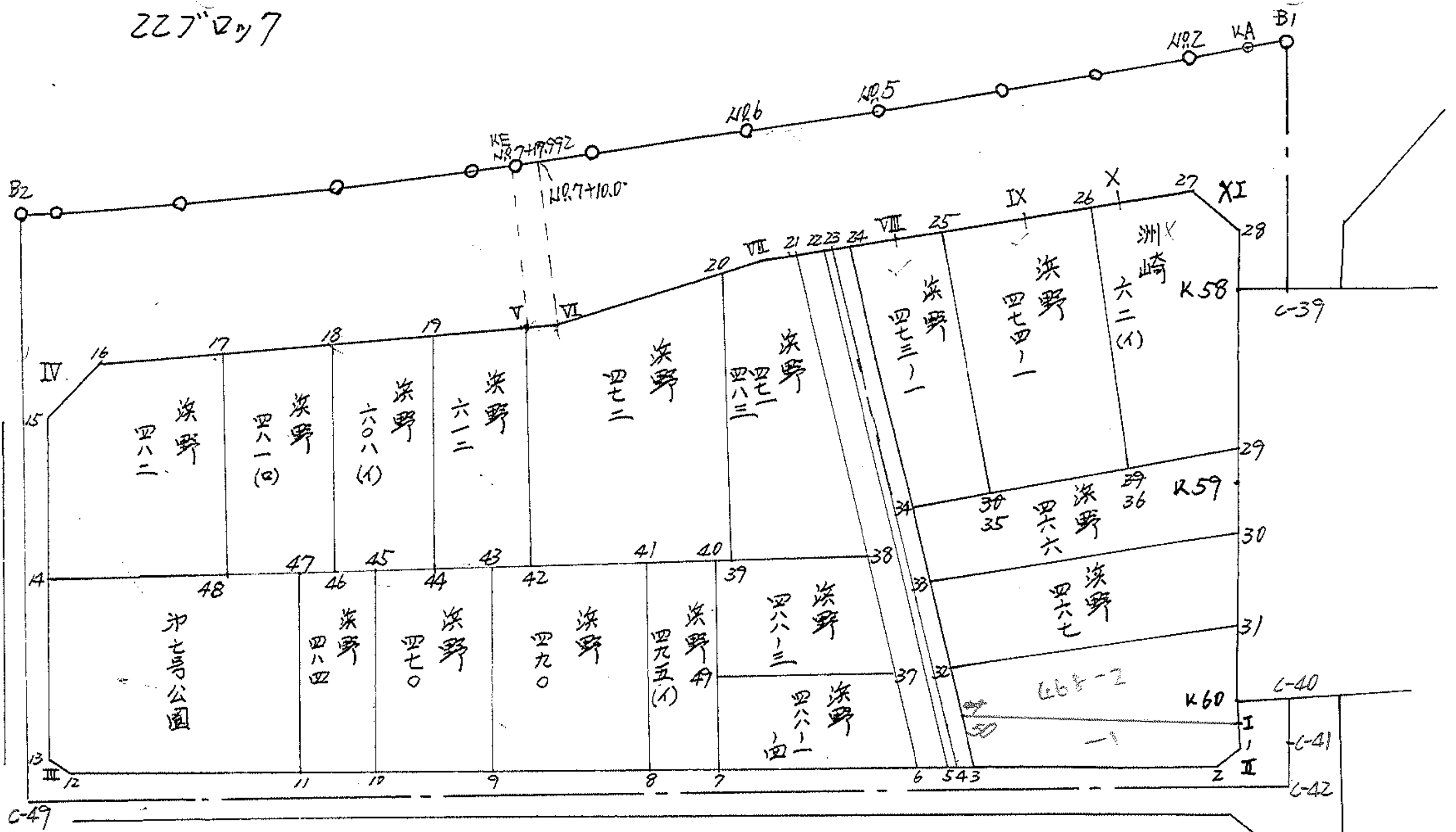
22-1



1-22



227°27'7"



面積計算書

工区

1

ブロック

22

計算者



精算者



備考

欠円割

点	①	②	③	④	⑤	⑥	③ × ⑤	② × ⑥	
	X	X-(定数)	X _{n-1} -X _{n+1}	Y	Y-(定数)	Y _{n-1} -Y _{n+1}	+	-	
I	-152 688.500	(-152600) - 88.500	+ 27.915	-35 233.140	(-35220) - 13.140	- 9.108		366.803100	806.058000
II	710.272	- 110.272	+ 73.862	225.664	- 5.664	+ 169.547		418.354368	18696.286784
III	762.362	- 162.362	- 25.611	402.687	- 182.687	+ 199.883	4678.796757		32453.403646
IV	684.661	- 84.661	- 103.497	425.547	- 205.547	- 44.205	21273.477859		3742.437505
V	658.865	- 58.865	- 29.383	358.482	- 138.482	- 75.576	4069.016606		4448.781240
VI	655.278	- 55.278	- 20.571	349.971	- 129.971	- 33.639	2673.633441		1859.496442 2473.633441
VII	638.294	- 38.294	- 25.247	324.843	- 104.843	- 43.340	2646.971221		1659.661960
VIII	630.031	- 30.031	- 16.674	306.631	- 86.631	- 36.358	1444.485274		2646.971221 1091.867098
IX	621.620	- 21.620	- 16.924	288.485	- 68.485	- 36.244	1159.040140		783.595280
X	613.107	- 13.107	- 16.089	270.387	- 50.387	- 34.077	810.676443		446.647239
XI	605.531	- 5.531	+ 9.074	254.408	- 34.408	- 19.948		312.218192	110.332388
K58	622.181	- 22.181	+ 38.499	250.439	- 30.439	- 9.337		1171.871061	207.103997
K59	644.030	- 44.030	+ 60.176	245.071	- 25.071	- 15.667		1508.672496	689.818010
K60	682.357	- 82.357	+ 44.470	234.772	- 14.772	- 11.931		656.910840	982.601367
								38756.117761	4034.830057
								16828.402726	51149.690430
								34321.287704	34321.287704
								1/2 = 17160.643852	
								17160.643852 - 23.1936	^{1/2} = 17137.450252

面積計算書

工
区

1

ブ
ロ
ック

22

計
算
者



精
算
者



備
考

点	①	②	③	④	⑤	⑥	③ ×	⑤	② ×	④
	X	X-(定数)	X _{n-1} -X _{n+1}	Y	Y-(定数)	Y _{n-1} -Y _{n+1}	+	-	+	-
	洲崎	62(1)								
		(-152,600)								
27	152,609.279	- 9.279	+ 0.935	152,622.314	- 22.314	- 18.008		20.863590	167.096232	
28	614.042	14.042	+ 12.902	252.379	12.379	- 11.875		159.713858	166.748750	
K.58	622.181	22.181	+ 27.490	250.439	10.439	- 6.694		286.968510	148.479614	
29	641.532	41.532	+ 25.288	245.685	5.685	+ 7.955		143.762280		330.387060
36	647.469	47.469	- 26.851	258.394	18.394	+ 28.047	493.897294			1331.363043
26	614.681	14.681	- 24.362	273.732	33.732	+ 11.993	1159.098984			176.069233
X	613.187	13.187	- 5.402	270.387	30.387	- 11.418	164.150574		148.65726	
							1817.146852	611.307838	631.980322	1837.819336
							1205.839014			1205.839014
							1/2 = 602.919507			

面積計算書

工
区

1

ブ
ロ
ック

22

計
算
者



精
算
者



備
考

点	①	②	③	④	⑤	⑥	③	×	⑤	②	×	⑤
	X	X-(定数)	X _{n-1} -X _{n+1}	Y	Y-(定数)	Y _{n-1} -Y _{n+1}	+	-	+	-		
	淡野 474-1 (152,610)											
26	-152,614.681	-4.681	+25.849	-35.257.732	-23.732	-30.091			613.448468			855.971 140.819710
36	647.469	37.469	+43.632	258.394	8.394	+7.875			366.247008			295.068875
35	658.313	48.313	-21.932	281.607	31.607	+38.642	693.204724					186.079646
25	625.137	15.137	-36.693	296.936	46.936	+6.878	1722.222648					106.863486
IX	621.620	11.620	-10.856	288.485	38.485	-23.204	417.793160			269.630480		
							2833.220532		979.695476	410.486451		2264.011507
							1853.625056					1853.625056
							1/2 = 926.762628					
	淡野 473-1 (152,620)											
25	-152,625.537	-5.537	+28.282	-35,296.936	-16.936	-25.024			478.983952			138.557888
35	658.313	38.313	+37.457	281.607	1.607	-5.288			60.209469			202.599144
34	663.004	43.004	-26.976	291.648	11.648	+27.903	314.216448					1199.940612
24	631.337	11.337	-32.973	309.509	29.610	+14.983	973.033230					169.862271
VIII	630.031	10.031	-5.800	306.631	26.631	-12.574	154.459800			126.129794		
							1241.709478		539.193421	467.286826		1369.802883
							902.516057					902.516057
							1/2 = 451.2580285					

面積計算書

工
区

/

ブ
ロ
ック

22

計
算
者



精
算
者



備
考

点	①	②	③	④	⑤	⑥	③ × ⑤		② × ⑥		
	X	X-(定数)	X _{n-1} -X _{n+1}	Y	Y-(定数)	Y _{n-1} -Y _{n+1}	+	-	+	-	
	浜野466										
29	-152.641.532	^(-152.640) - 1.532	- 18.974	-35.245.685	^(-35.240) - 5.685	- 46.577	107.867190			71.355964	
K 59	642.030	4.030	+ 17.505	225.071	5.071	- 4.647		88.767865	18.727410		
30	659.037	19.037	+ 34.538	241.038	1.038	+ 37.798		35.850444		719.560526	
33	678.568	38.568	+ 3.967	282.869	42.869	+ 50.610		170.061323		195.1926480	
34	663.004	23.004	- 37.036	291.648	51.648	- 37.184	1912.835328			855.380736	
							2020.702518	294.679622	945.464110	2671.487006	
							1726.022896			1726.022896	
							1/2 = 863.011448				
	浜野467										
30	-152.659.037	^(-152.650) - 9.037	- 5.511	-35.241.038	^(-35.230) - 11.038	- 45.598	60.830418			412.069126	
31	673.057	23.057	+ 32.015	237.271	7.271	+ 34.788		232.781065		822.106916	
32	691.052	41.052	+ 5.511	275.826	45.826	+ 45.598		212.547086		1871.889076	
33	678.568	28.568	- 32.015	282.869	52.869	+ 34.788	1692.601035			993.823584	
							1753.431445	485.328151	1405.892710	2673.996012	
							1268.103302			1268.103302	
							1/2 = 634.051651				

面積計算書

工
区

1

ブ
ロ
ック

22

計
算
者



精
算
者



備
考

点	①	②	③	④	⑤	⑥	③	×	⑤	②	×	⑤
	X	X-(定数)	$X_{n-1}-X_{n+1}$	Y	Y-(定数)	$Y_{n-1}-Y_{n+1}$	+	-	+	-		
道												
22	152 632.789	(-152.630) - 2.789	+ 87.175	35 312.710	(-35.260) - 52.710	- 52.619			4494.994250	146.754391		
5	721.209	91.209	+ 89.290	262.834	2.834	- 46.922			253047860	4279.708698		
6	722.079	92.079	- 87.175	265.788	5.788	+ 52.619	504.568900					4845.104901
21	634.034	4.034	- 89.290	315.453	5.453	+ 46.922	4951.398370					0.189283348
							5455.967270	4848.042110	4426.463089	5034.388249		
							607.925160					607.925160
							$\frac{1}{2} \rightarrow$ 303.962580					
浜野 471 483												
21	152 634.034	(-152.630) - 4.034	+ 44.455	35315.453	(-35.280) - 35.453	- 36.870			1576.063115	148.735580		
38	682.749	52.749	+ 56.985	287.973	7.973	+ 0.610			454341.405			32.176890
39	691.019	61.019	- 46.621	316.063	36.063	+ 42.542	1464.915123					2595.870238
20	642.128	12.128	- 52.725	330.515	50.515	+ 8.780	2663.403375					106.483840
VII	638.294	8.294	- 8.094	324.843	44.843	- 15.062	362.959242					124.92428
							4491.277740	2030.404520				273.637800
							2460.873220					2734531028
							$\frac{1}{2} =$ 1230.436610					273.637800
												> 406.873220

面積計算書

工
区

ブ
ロ
ック

22

計
算
者



精
算
者



備
考

点	①	②	③	④	⑤	⑥	③ × ⑤		② × ⑥		
	X	X-(定数)	X _{n-1} -X _{n+1}	Y	Y-(定数)	Y _{n-1} -Y _{n+1}	+	-	+	-	
	浜野482										
17	-152 676.647	-6.647	+31.840	-35 403.492	-13.492	-24.681		429.585280	164.054607		
48	713.558	43.558	+43.557	392.626	2.626	+11.607		114.301902		505.577706	
14	720.174	50.174	-20.503	415.099	25.099	+30.441	544.604797			1527.848474	
15	693.055	23.055	-38.446	423.077	33.077	+2.208	1272.009112			509.05440	
16	681.718	11.718	-16.408	417.307	27.307	-19.585	448.053266		229.497030		
							2234.667165	543.887182	393.551637	2084.331620	
							1690.779983			1690.779983	
							1/2 = 845.3899915 - 0.140 = 845.249				
							(72.17)				
	浜野488-3										
38	-152 682.749	-2.749	+12.737	-35 287.973	-17.973	-41.068		228.922101	112.895932		
37	704.041	24.041	+31.405	275.963	5.963	+22.340		187.268015		537.075940	
49	714.154	34.154	-12.737	310.313	40.313	+41.068	513.466681			1402.636472	
40	691.304	11.304	-31.405	317.031	47.031	-22.340	1477.008555		252.531360		
							1990.475236	416.190116	365.427292	1939.712412	
							1574.285120			1574.285120	
							1/2 = 787.42560				

面積計算書

工
区

/

ブ
ロ
ック

22

計
算
者



相
算
者



備
考

点	①	②	③	④	⑤	⑥	③	×	⑤	②	×	⑥
	X	X-(定数)	X _{n-1} -X _{n+1}	Y	Y-(定数)	Y _{n-1} -Y _{n+1}	+	-	+	-		
	浜野472											
20	-152.642.128	^(-152.642) - 2.128	+ 35.741	-35.330.515	^(-35.310) - 20.515	- 33.908			733.226615	72.156224		
39	671.019	51.019	+ 57.809	316.063	6.063	+ 15.843			350.495967			808.294017 822.837891
42	699.937	49.937	- 22.154	346.358	36.358	+ 42.419	1169.055132					2542.467603
V	658.865	18.865	- 44.659	358.482	48.482	+ 3.613	2165.157638					68.159245
VI	655.278	15.278	- 16.737	349.971	39.971	- 27.967	668.994627			427.279826		
							4003.207397	1083.722282	499.436050	3418.920865		
							2919.484815					2919.484815
							1/2 = 1459.7424075					
	浜野612											
V	-152.658.865	^(-152.650) - 8.865	+ 34.790	-35.358.482	^(-35.320) - 18.482	- 27.431			642.988780	243.175815		
42	699.937	49.937	+ 45.729	346.358	6.358	+ 3.695			290.744982			184.517215
44	704.594	54.594	- 34.790	362.177	22.177	+ 27.431	771.537830					1497.568014
19	665.147	15.147	- 45.729	373.789	33.789	- 3.695	1545.137181			55.968165		
							2316.675011	933.733762	299.143980	1682.085229		
							1382.941249					1382.941249
							1/2 = 691.4706245		691.4706245	691.4706245		
									(R14)	- 0.380 = 691.090		

面積計算書

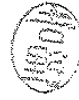
工
区

/

ブ
ロ
ック

22

計
算
者



精
算
者



備
考

点	①	②	③	④	⑤	⑥	③ × ⑤		② × ⑤		
	X	X-(定数)	$X_{n-1} - X_{n+1}$	Y	Y-(定数)	$Y_{n-1} - Y_{n+1}$	+	-	+	-	
	赤野 608(1)										
19	-152,665.147	(-152,660) -5.147	+ 33.681	-35,373.789	(-35,360) -13.789	-26.241			464,427.309	135,062.427	
44	704.594	44.594	+ 43.870	362.177	2.177	+ 3.412			95,504.990		152,154.728
46	709.017	49.017	- 33.681	377.201	17.201	+26.241	579,346.881				1286,255.097
18	670.913	10.913	- 43.870	388.418	28.418	- 3.412	1246,697.660			37,235.156	
									102435.960		
							1826,044.441	579,932.299	172,297.583	1438,409.825	
							1266,112.242				1266,112.242
							$\frac{1}{2} = 633,056.121$	$- 0.156 = 632.900$			
								(R.F.)			

面積計算書

工区

/

ブロック

22

計算者



概算者



備考

点	①	②	③	④	⑤	⑥	③ × ⑤		② × ⑤		
	X	X-(定数)	X _{n-1} -X _{n+1}	Y	Y-(定数)	Y _{n-1} -Y _{n+1}	+	-	+	-	
	水路										
		(-152,630)			(-35,250)						
24	-152 631.337	- 1.337	+ 87.820	-35 309.510	- 59.510	- 52.408		5226.168200		70.069496	
3	920.195	90.195	+ 89.583	259.388	9.388	- 47.660		841.005204		4298.693700	
4	920.920	90.920	- 87.820	261.850	11.850	+ 52.408	1040.66700				4764.925360
23	632.375	2.375	- 89.583	311.796	61.796	+ 47.660	5535.871088				113.192500
							6576.538068	6067.173404	4368.763196	4878.127860	
							509.364664				509.364664
							1/2 = 254.682332				
	小堤										
		(-152,630)			(-35,260)						
23	-152 632.375	- 2.375	+ 88.131	-35 311.796	- 51.796	- 50.860		4564.833276		120.792500	
4	920.920	90.920	+ 88.834	261.850	1.850	- 48.962		164.342900	4451.625040		
5	921.209	91.209	- 88.131	262.834	2.834	+ 50.860	249.763254				4638.889740
22	632.789	2.789	- 88.834	312.710	52.710	+ 48.962	4682.440140				136.555018
							4932.203394	4729.176176	4572.417540	4775.444758	
							203.027218				203.027218
							1/2 = 101.513609				

面積計算書

工区

/

ブロック

22

計算者



精算者



備考

点	①	②	③	④	⑤	⑥	③ × ⑤		② × ⑥		
	X	X-(定数)	X _{n-1} -X _{n+1}	Y	Y-(定数)	Y _{n-1} -Y _{n+1}	+	-	+	-	
	浜野488-1-4 (-152,900)										
37	-152 704.041	- 4.041	+ 7.925	-35 275.963	-15.963	- 44.525		126.506775	179.925525		
6	722.079	22.079	+ 29.465	265.788	5.788	+ 28.660		170.543420		632.784140	
7	733.506	33.506	- 7.925	304.623	44.623	+ 44.525	353.637275			1491.854650	
49	714.154	14.154	- 29.465	310.313	50.313	- 28.660	1482.472545		405.653640		
							1836.109820	297.050195	585.579165	2124.638790	
							1539.059625			1539.059625	
							1/2 = 769.5298125				
	浜野4950 (-152,690)										
40	-152 691.304	- 1.304	+ 38.240	-35 317.031	-17.031	- 25.867		65.265440	33.730568		
7	733.506	43.506	+ 46.163	304.623	4.623	+ 1.054		213.411549		45.855304	
8	737.467	47.467	- 38.240	318.085	18.085	+ 25.867	691.570400			1227.828889	
41	695.266	5.266	- 46.163	330.490	30.490	- 1.054	1407.509870		5.550364		
							2099.080270	868.576989	39.280932	1273.684213	
							1234.403281			1234.403281	
							1/2 = 617.2016405				

面積計算書

工区

/

ブロック

22

計算者



精算者



備考

点	①	②	③	④	⑤	⑥	③ × ⑤		② × ⑥		
	X	X-(定数)	X _{n-1} -X _{n+1}	Y	Y-(定数)	Y _{n-1} -Y _{n+1}	+	-	+	-	
	浜野484										
45	-152707.059	-7.259	+39.112	-35370.550	-20.550	-22.881		803.741600	-161.516979		
10	749.258	49.258	+45.284	358.153	8.153	-1.910		369.200442	94.082760		
11	752.343	42.343	-39.112	368.640	18.640	+22.881	729.047680			1197.660183	
47	710.146	10.146	-45.284	381.034	31.034	+1.910	1405.343656			19378860	
							2134.391336	1172.952052	255.599759	1217.039043	
							961.439284			961.439284	
							1/2 = 480.719642				
	大松公園										
47	-152710.146	-0.146	+32.169	-35381.034	-21.034	-46.459		676.642746	6.783014		
11	752.343	42.343	+41.652	368.640	8.640	+19.734		446.273280		835.696762	
12	761.798	51.798	+8.100	400.768	40.768	+34.611		330.220800		1792.780578	
13	760.443	50.443	-41.624	403.251	43.251	+14.231	1800.279624			722.898633	
14	720.174	10.174	-50.297	415.099	55.099	-22.217	2771.314403		226.025758		
							4571.594027	1453.136826	232.818772	3351.275973	
							3118.457201			8118.457201	
							1/2 = 1559.2286025				

面積計算書

工
区

ブ
ロ
ック

22

計
算
者



精
算
者



備
考

点	①	②	③	④	⑤	⑥	③ × ⑤		② × ⑥	
	X	X-(定数)	X _{n-1} -X _{n+1}	Y	Y-(定数)	Y _{n-1} -Y _{n+1}	+	-	+	-
468-2										
31	152,673.057	0.057	8,695	35,237.271	4.271	41.054	37.136345		2.340078	
K.60	182,357	9.357	15,043	234,772	1.772	4.131		364,996	38.653767	
I	688,500	15.500	15,099	233,140	0.140	37.442		2,113,860		580.351000
50	697,456	24,456	2,552	272,214	39,214	42,686		100,074,128		1047.928816
49	691,052	18,052	24,399	275,876	42,826	34,943	1044,911574		630,791076	
								129,552784		
							1082,049719	29,528,264	671,784881	1624,279816
								952,474,005		952,494,935
								952,513,655		
							1/2	476,247,467.5		
468-1										
I	152,688,500	0.500	10,825	35,233,140	7,140	45,901		98,004,500	22,950,500	
1	708,381	20,381	22,336	226,313	0,313	5,557		6,991,168	113,257,217	254,889,650
2	710,836	22,836	11,814	227,583	1,583	33,075		18,701,562		755,306700
3	720,195	32,195	13,580	259,388	33,388	44,631	446,731,440			1436,895,045
50	697,456	9,456	31,695	272,214	46,214	26,247	14,64,752,700		248,201,088	
49							1911,484,170	123,697,230	384,408,805	2192,195,745
							1807,786,940			1807,786,940
							1/2	903,893,470		

面積計算書

工
区

ブ
ロ
ック

計
算
者



精
算
者



備
考

点	①	②	③	④	⑤	⑥	③ × ⑤		② × ⑤	
	X	X-(定数)	$X_{n-1} - X_{n+1}$	Y	Y-(定数)	$Y_{n-1} - Y_{n+1}$	+	-	+	-
	角切									
12	-15276.798	^(-152.760) -1.798	+ 1.919	-35400.768	^(-35.400) -0.768	- 0.564		1.473792	1.014072	
Ⅲ	762.362	2.362	- 1.255	402.687	2.687	+ 2.483	3.640885			5.864846
13	760.443	0.443	- 0.564	403.251	3.251	- 1.919	1.833564		0.850117	
							5.474449	1.473792	1.864189	5.864846
							4.000657			4.000657
							$\frac{1}{2} = 2.0003285$			
	角切									
15	-152893.055	^(-152.680) -13.055	+ 2.940	-35423.077	^(-35.410) -13.077	+ 8.240		38.485611		107.573200
Ⅳ	684.661	4.661	- 11.337	425.547	15.547	- 5.770	176.256339		26.893970	107.573200
16	681.718	1.718	+ 8.394	417.307	7.307	- 2.470		61.334958	4.243600	
							176.256339	99.820569	31.137430	107.573200
							76.435770			76.435770
							$\frac{1}{2} = 38.217885$		$- 7.140 = 38.277$	
								(R1)		
									$- 0.295 = 37.923$	

面積計算書

工区

/

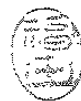
ブロック

22

計算者



概算者



備考

点	①	②	③	④	⑤	⑥	③ × ⑤	② × ⑥	
	X	X-(定数)	$X_{n-1} - X_{n+1}$	Y	Y-(定数)	$Y_{n-1} - Y_{n+1}$	+	-	
	角切								
XI	-152605.531	$(-152,600)$ - 5.531	+ 4.763	-35254.408	$(-35,250)$ - 4.408	- 9.935		20.995304	54.950485
28	614.042	14.042	+ 3.748	252.379	2.379	+ 7.906		8.916492	111.016052
27	609.279	9.279	- 8.511	262.314	12.314	+ 2.029	104.804454		18,827091
							104.804454	29.911796	54.950485
							74.892658		74.892658
							$\frac{1}{2} = 37.446329$		
	角切								
I	-152908.381	$(-152,900)$ - 8.381	- 0.564	-35226.313	$(-35,220)$ - 6.313	- 1.919	3.560532		16.083139
II	710.272	10.272	+ 2.455	225.664	5.664	+ 1.270		13.905120	13.045440
2	710.836	10.836	- 1.891	227.583	7.583	+ 0.649	14.339453		7.032564
							17.899985	13.905120	16.083139
							3.994865		3.994865
							$\frac{1}{2} = 1.9974325$		

計年 月 算日	計算者		検査者
---------------	-----	---	-----

B. No.

各筆面積計算書

地番	算式	隅切	地積	摘要
468-2			476.24	✓
468-1			903.89	✓
62-4)			602.91	✓
474-1			926.76	✓
473-1			451.25	✓
466			863.01	✓
467			634.05	✓
水路			254.68	✓
小堤			101.51	✓
道			303.96	✓
471			1230.43	✓
483				
472			1459.74	✓
612			691.09	✓
608-(1)			632.90	✓
481-(12)			628.61	✓
482			845.24	✓
488-3			787.14	✓
488-1*			769.52	✓
495-4)			617.20	✓
490			1039.90	✓
470			797.03	✓
484			480.71	✓
*7号公園			1559.22	✓
角切XI		37.44		
" II		1.99		

0
7
3

0

