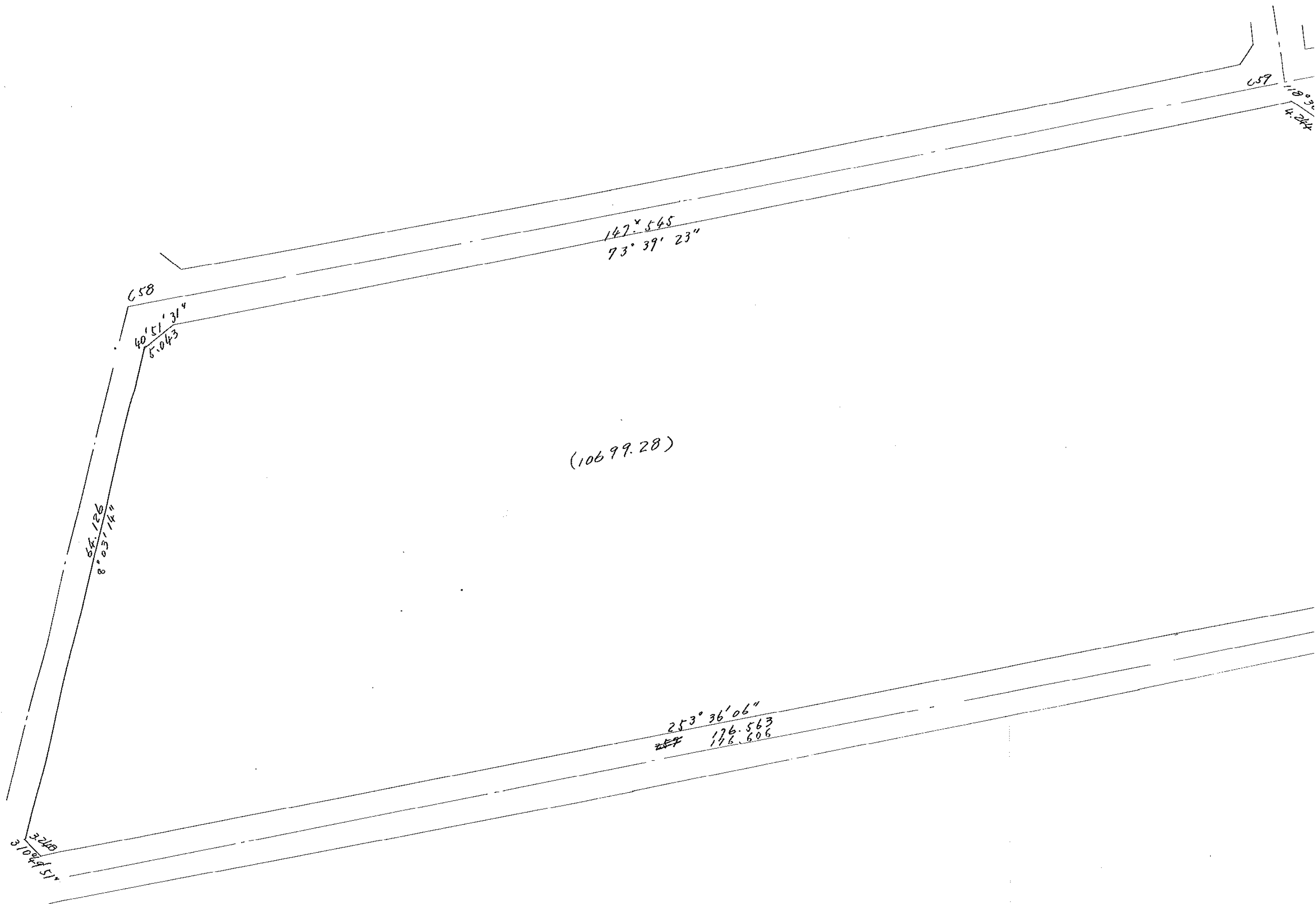
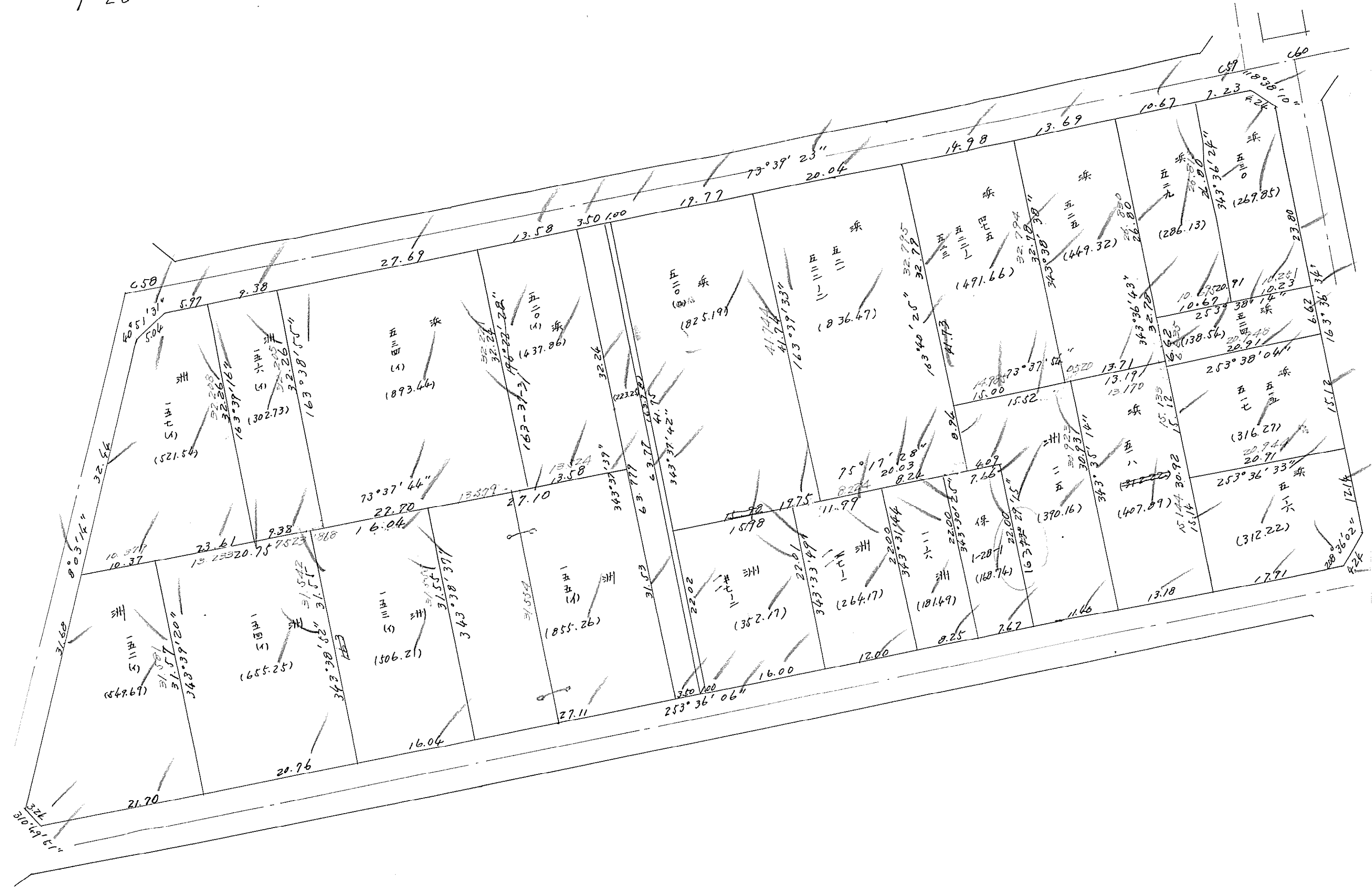
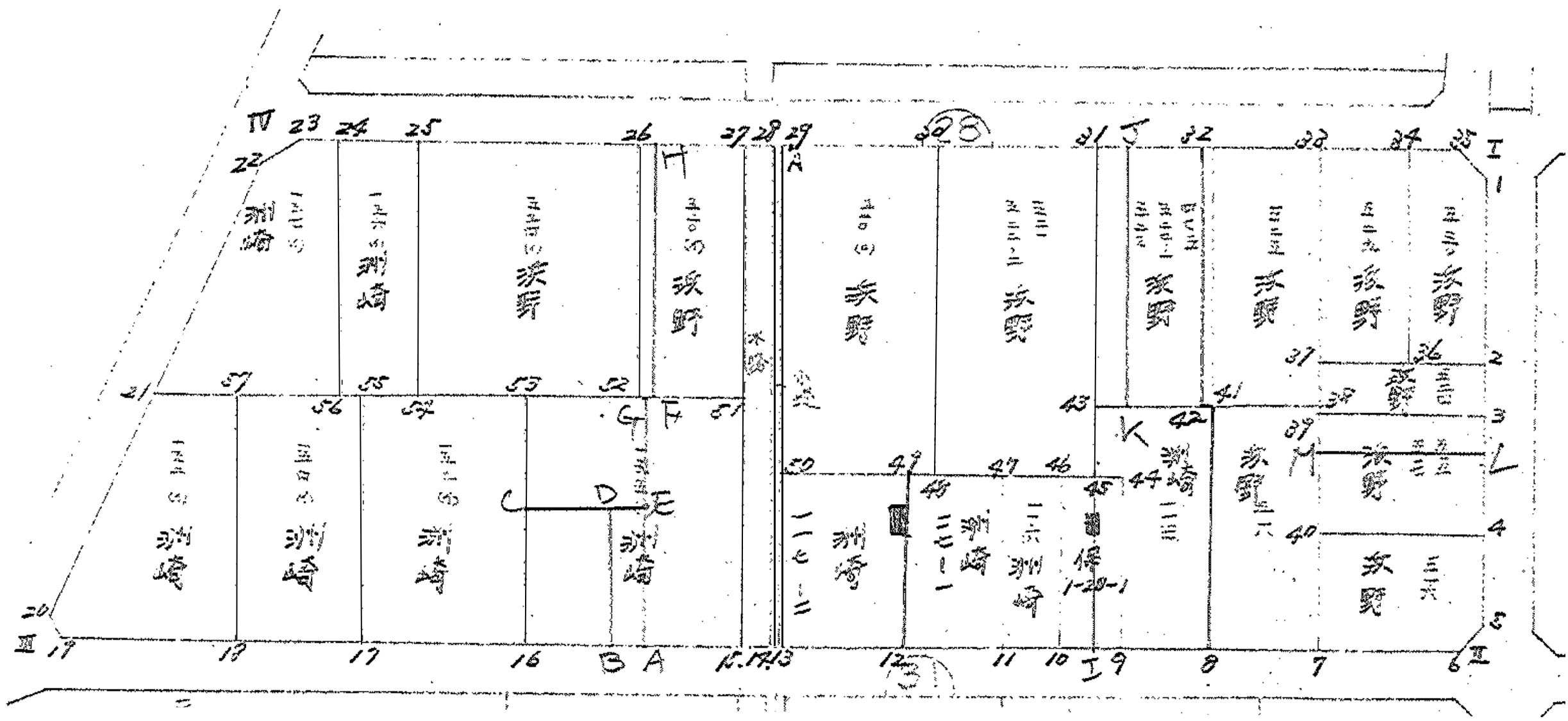


1-28







面 積 計 算 書

工
区

/

ブ
ロ
ック

28

計
算
者

藤
原

類
算
者

野
中

備
考

点	①	②	③	④	⑤	⑥	③ × ⑤	② × ⑥
	X	X-(定数)	X _{n-1} -X _{n+1}	Y	Y-(定数)	Y _{n-1} -Y _{n+1}	+ -	+ -
I	-152 787 759	(152700) - 87.759	+ 17.894	-35 407 481	(35300) - 107.481	- 165.342	1,923,265,014	14,507,615,808
II	-152 848 860	- 148,860	+ 112.641	-35 389 509	- 89.509	+ 157.165	10,082,383,269	23,395,581,900
III	-152 900 400	- 200,400	- 17.894	-35 564 646	- 264.646	+ 165.312	4,735,575,524	28,524,800 33,130,328,400
IV	-152 830 966	- 130,966	- 112.641	-35 554 821	- 254.821	- 157.165	28,703,292,261	20,583,271,390
							33,438,867,785	4,106,700 35,090,887,985
							21,433,219,502	21,433,219,502
							1/2 = 21,107,16,609751 ^{m2}	

面 算 計 算 書

工
区

ブ
ロ
ック

28

計
算
者



検
査
者



備
考

項	①	②	③	④	⑤	⑥	③	×	⑤	②	×	⑥	
	X	X-(定数)	$X_{n-r}-X_{n+1}$	Y	Y-(定数)	$Y_{n-r}-Y_{n+1}$	+		-	+		-	
	洲崎	152 (1)											
57	-152 863.132	(-152860.000) - 3.132	+ 27.369	-35 549.831	(-35540.000) - 9.831	-18.839			269.064639			59.003748	
18	893.426	- 33.426	+ 36.421	540.947	- 0.947	+ 11.937			34.490687			399.006162	
19	899.553	- 39.553	+ 4.003	561.768	- 21.768	+ 23.279			87.139304			920.754289	
20	897.429	- 37.429	- 33.496	564.226	- 24.226	- 1.982	811.474096					74.184278	
21	866.057	- 6.057	- 34.297	559.786	- 19.786	- 14.395	678.600442					87.190515	
							1490.074538		390.692630			220.378541	1319.760449
							1099.381908					1099.381908	
							$\times 1/2 = 549.690954$						
	洲崎	154 (1)											
55	-152 857.282	(-152850.000) - 7.282	+ 24.432	-35 529.915	(-35540.000) - 29.915	- 28.801			730.883280			209.928882	
17	887.564	- 37.564	+ 36.144	521.030	- 21.030	+ 11.032			760.108320			414.406048	
18	893.426	- 43.426	- 24.432	540.947	- 40.947	+ 28.801	1000.417104					1250.712226	
57	863.132	- 13.132	- 36.144	549.831	- 49.831	- 11.032	1801.091664					144.872224	
							2801.508768		1490.991600			354.601106	1665.118284
							1310.517168					1310.517168	
							$\times 1/2 = 655.258584$						

面積計算書

工区

ブロック

28

計測者



種類者



備考

点	①	②	③	④	⑤	⑥	③	×	⑤	②	×	⑥
	X	X-(定数)	X _{n-r} -X _{n+1}	Y	Y-(定数)	Y _{n-r} -Y _{n+1}	+		-	+		-
	洲崎	157-(1)										
24	-152 828.442	(-152800.000) -28.442	+29.280	-35 546.213	(-35500.000) -46.213	- *14.809			1353.116640	421.197578		
56	859.402	-59.402	+34.690	537.133	-37.133	+3.618			1288.143770			214.916436
57	863.132	-63.132	+6.655	549.831	-49.831	+22.653			331.625305 331			1430.129196
21	866.057	-66.057	-29.196	559.786	-59.786	+5.410	1745.512056					357.368370
22	833.936	-33.936	-35.935	555.241	-55.241	-7.844	1985.085335			266.193984		
23	830.122	-30.122	-5.494	551.942	-51.942	-9.028	285.369348			271.941416		
									4015.966749 ³	2972.885715	959.332978	2002.414002
									1043.081024			1043.081024
									x 1/2 = 521.540512 ²			
	洲崎	156-(1)										
25	-152 825.802	(-152800.000) -25.802	+28.315	-35 537.210	(-35500.000) -37.210	-18.085			1053.601150	466.629170		
54	856.757	-56.757	+33.600	528.128	-28.128	-0.077			945.100800	4.370289		
56	859.402	-59.402	-28.315	537.133	-37.133	+18.085	1051.420895					1074.285170
24	828.442	-28.442	-33.600	546.213	-46.213	+0.077	1552.756800					2.190034
									1998.701234			
									2604.177695	1998.709150	470.999459	1076.475204
									605.468545	1998.701950		605.475745
									605.475745			70
									x 1/2 = 302.7378725			

面積計算書

工区

ブロック

28

計測者



検査者



備考

点	①	②	③	④	⑤	⑥	③	×	⑤	②	×	⑥
	X	X-(定数)	X _{n-r} -X _{n+1}	Y	Y-(定数)	Y _{n-r} -Y _{n+1}	+		-	+		-
	洲崎	153(4)										
53	-152 852.761	(-152850.000) -2.761	+25.753	-35 514.524	(-35500.000) -14.524	-24.276				374.036572		67.026036
16	883.035	-33.035	+34.803	505.639	-5.639	+6.506				196.254117		214.925710
17	887.564	-37.564	-25.753	521.030	-21.030	+24.276	541.585590					911.903664
55	857.282	-7.282	-34.803	529.915	-29.915	-6.506	1041.131745					47.376692
							1582.717335		570.290689	114.402728	1126.829374	
							1012.426646					1012.426646
							× 1/2 = 506.213323					
	洲崎	155(4)										
51	-152 845.120	(-152800.000) -45.120	+22.619	-35 488.515	(-35400.000) -88.515	-34.899				2002.120785		1574.642880
15	875.380	-75.380	+37.915	479.625	-79.625	+17.124				3018.981875		1290.807120
16	883.035	-83.035	-22.619	505.639	-105.639	+34.899	2389.448541					2899.838465
53	852.761	-52.761	-37.915	514.524	-114.524	-17.124	4342.177460					903.479364
							6731.626001		5021.102660	2478.122244	4488.645585	
							1710.523341					1710.523341
							× 1/2 = 855.2616705					

面 積 計 算 書

工 区

ブロック

28

計 算 者



測 定 者



備 考

点	①	②	③	④	⑤	⑥	③ × ⑤	② × ⑥		
	X	X-(定数)	X _{n-1} -X _{n+1}	Y	Y-(定数)	Y _{n-1} -Y _{n+1}			+	-
	茨野	534(1)								
26	⁻¹⁵² 818.008	^(-152800.000) -18.008	+23.145	⁻³⁵ 510.635	^(-35500.000) -10.635	-35.666		246.147075	642.273328	
52	848.947	-48.947	+38.749	501.544	-1.544	+17.493		59.828456	856.229871	
54	856.757	-56.757	-23.145	528.128	-28.128	+35.666	651.022560		2024.295162	
25	^{825.802} 828.442	-25.802	-38.749	^{537.210} 546.213	-37.210	-17.493	1441.850290		451.354386	
							2092.872850	305.975531	1093.627714	2880.525039
							1786.897319			1786.897319
							×1/2 = 893.4486595			
	茨野	520(1)								
27	⁻¹⁵² 814.187	^(-152800.000) -14.187	+27.112	⁻³⁵ 497.603	^(-35400.000) -97.603	-22.120		2646.212536	313.816440	
51	845.120	-45.120	+34.760	488.515	-88.515	+3.941		3076.781400	177.817920	
52	848.947	-48.947	-29.112	501.544	-101.544	+22.120	2753.060928		1082.707640	
26	818.008	-18.008	-34.760	510.635	-110.635	-3.941	3845.672600		70.969528	
							6578.733528	5722.993936	384.785968	1260.525560
							875.739592			⁷³⁹⁵⁹² 875.83
							×1/2 = 437.869796			
							437.869796			

面 積 計 算 書

工
区

ノ
ック

計
算
者

1987
10
10

類
算
者

1987
10
10

備
考

点	①	②	③	④	⑤	⑥	③	×	⑤	②	×	⑥
	X	X-(定数)	$X_{n-r}-X_{n+1}$	Y	Y-(定数)	$Y_{n-r}-Y_{n+1}$	+		-	+		-
	小堤 -152	(-152800.000)		-35	(-35400.000)							
29	812.920	-12.920	+60.907	493.284	-93.284	-18.936			5681.648588	244.653120		
13	874.109	-74.109	+61.471	475.308	-75.308	-17.017			4629.258068	1261.112853		
14	874.391	-74.391	-60.907	476.267	-76.267	+18.936	4645.194169					1408.667976
28	813.202	-13.202	-61.471 61.471	494.244	-94.244	+17.017	5793.272924					224.658434
							10438.467093	10310.906656	1505.765973	1633.326410		
							127.560437					127.560437
							$\times \frac{1}{2} = 63.7802185$					
	水路 -152	(-152800.000)		-35	(-35470.000)							
28	813.202	-13.202	+60.204	494.244	-24.244	-21.336			1459.585776	281.677872		
14	874.391	-74.391	+62.178	476.267	-6.267	-14.619			389.669526	1089.522029		
15	875.380	-75.380	-60.204	479.625	-9.625	+21.336	579.463500					1608.307680
27	814.187	-14.187	-62.178	497.603	-27.603	+14.619	1716.299334					207.399753
							2295.762934	1849.255302	1369.199901	1835.707433		
							446.507532					446.452131
							$\times \frac{1}{2} = 223.253766$					446.507532

面積計算書

工区

ブロック

Z8

計測者



採算者



備考

点	①	②	③	④	⑤	⑥	③	×	⑤	②	×	⑥
	X	X-(定数)	$X_{n-r}-X_{n+1}$	Y	Y-(定数)	$Y_{n-r}-Y_{n+1}$	+		-	+		-
	浜野	520 (Z)										
30	-152 807.355	(-52800.000) -7.355	+34.491	-35 474.305	(-35460.000) -14.305	-30.723			493.393755	225.967665		
48	847.411	-47.411	+45.623	462.561	-2.561	+7.211			116.840503			341.880721
50	852.978	-52.978	-34.491	481.516	-21.516	+30.723	742.108356					1627.643094
29	812.920	-12.920	-45.623	493.284	-33.284	-7.211	1518.515932			93.166120		
							226.624288		610.234258	319.133785		1969.523815
							1650.390030					1650.390030
							× 1/2 = 825.195015					
	浜野	521										
31	-152 801.714	(-52200.000) -1.714	+34.411	-35 455.069	(-35440.000) -15.069	-30.968			518.539359	53.079152		
45	841.766	-41.766	+45.697	443.337	-3.337	+7.492			152.490889			312.910872
48	847.411	-47.411	-34.411	462.561	-22.561	+30.968	776.346571					1468.223848
30	807.355	-7.355	-45.697	474.305	-34.305	-7.492	1567.635585			55.103660		
							2342.982156		671.030248	108.182812		1781.134720
							1672.951908					1672.951908
							× 1/2 = 836.475954					
							分筆後の座標なし					

面積計算書

工
区

ブロック

28

計
者



測
者



備
考

10716.60

点	①	②	③	④	⑤	⑥	③	X	⑤	②	X	⑥
	X	X-(定数)	X _{n-1} -X _{n+1}	Y	Y-(定数)	Y _{n-1} -Y _{n+1}	+		-	+		-
	洲崎	117-2										
49	-152 848.475	(-152800.000) -48.475	+16.612	-35 466.182	(-35400.000) -66.182	-21.563						
12	869.590	-69.590	+25.634	459.953	-59.953	+9.126						
13	874.109	-74.109	-16.612	475.308	-75.308	+21.563	1251.016496					
50	852.978	-52.978	-25.634	481.516	-81.516	-9.126	2089.581144					
							3340.597640					
							7 804.347054					
							152.193527 152.193527					
							X ^{1/2} = 173527					
	洲崎	117-1										
47	-152 845.095	(-152800.000) -45.095	+17.725	-35 454.673	(-35400.000) -54.673	-17.749						
11	866.200	-66.200	+24.495	448.433	-48.433	+5.280						
12	869.590	-69.590	-17.725	459.953	-59.953	+17.749	1062.666925					
49	848.475	-48.475	-24.495	466.182	-66.182	-5.280	1621.128090					
							2683.7950158					
							528.349755					
							X ^{1/2} = 264.1748775					

面 積 計 算 書

工
区

ブロック

28

計
算
者



測
量
者



備
考

点	①	②	③	④	⑤	⑥	③	×	⑤	②	×	⑥
	X	X-(定数)	$X_{n-1}-X_{n+1}$	Y	Y-(定数)	$Y_{n-1}-Y_{n+1}$	+		-	+		-
	洪野	475										
	-152	522-1										
		523 (-152 790000)										
32	797.497	- 7.497	+ 27.243	440.689	-10.689	- 23.613			291.200427	177.026661		
42	828.957	- 38.957	+ 35.688	431.456	- 1.456	+ 5.162			51.961728			201.096034
43	833.185	- 43.185	- 27.243	445.851	- 15.851	+ 23.613	431.828773					1019.727405
31	801.714	- 11.714	- 35.688	455.069	- 25.069	- 5.162	894.662472			60.467668		
									1326.491265	543.162155	237.494329	1220.823437
									983.329110			983.329110
												$\frac{1}{2} = 491.664555$
	洪野	525										
	-152	(-152 790000)										
33	793.643	- 3.643	+ 27.595	427.546	- 17.546	- 22.392			484.181870	81.574056		
38	825.092	- 35.092	+ 35.314	418.297	- 8.297	+ 3.910			293.000258			137.209720
42	828.957	- 38.957	- 27.595	431.456	- 21.456	+ 22.392	592.078320					872.325144
32	797.497	- 7.497	- 35.314	440.689	- 30.689	- 3.910	1083.751346			29.313270		
									1675.829666	777.182128	110.887326	1009.534864
									898.647538			898.647538
												$\frac{1}{2} = 449.323769$

面積計算書

工区

ブロック

ZB

計測者



経理者



点	①	②	③	④	⑤	⑥	③	×	⑤	②	×	⑥
	X	X-(定数)	X _{n-1} -X _{n+1}	Y	Y-(定数)	Y _{n-1} -Y _{n+1}	+		-	+		-
	係+28-1											
	-152	(-152840.000)		-35	(-35430.000)							
44	840.612	-0.612	+18.933	439.409	-9.409	-13.608			178.140597	8.328096		
9	861.705	-21.705	+23.259	433.156	-3.156	+1.108			73.405404			24.049140
10	863.871	-23.871	-18.933	440.517	-10.517	+13.608	199.118361					324.836568
46	842.772	-2.772	-23.259	446.764	-16.764	-1.108	389.913876			3.071376		
							589.032237		251.546001	11.399472		348.885708
							337.486236					337.486236
							× 1/2 = 168.743118					

面積計算書

工区

ブロック

28

計測者



計算者



備考

点	①	②	③	④	⑤	⑥	③	×	⑤	②	×	⑥
	X	X-(定数)	$X_{n-1}-X_{n+1}$	Y	Y-(定数)	$Y_{n-1}-Y_{n+1}$	+		-	+		-
	浜野	524										
2	-152 813.470	(-152 810.000) -3.470	+0.465	-35 399.918	(-35 390.000) -9.918	-21.933			4.611870	76.107510		
3	819.826	-9.826	+12.248	398.049	-8.049	+18.195			98.584152			178.784070
39	825.718	-15.718	-0.465	418.113	-28.113	+21.933	13.072525					344.742894
37	819.361	-9.361	-12.248	419.982	-29.982	-18.195	267.219536			170.323395		
							380.292081	103.196022	246.430905	523.526964		
							277.096059					277.096059
									$\frac{1}{2} = 138.5480295$			
	浜野	515										
3	-152 819.826	(-152 810.000) -9.826	+8.613	-35 398.049	(-35 390.000) -8.049	-24.331			69.326037	239.076406		
4	834.331	-24.331	+20.406	393.782	-3.782	+15.795			77.175492			384.308145
40	840.232	-30.232	-8.613	413.844	-23.844	+24.331	205.368372					735.574792
39	825.718	-15.718	-20.406	418.113	-28.113	-15.795	574.673878			249.265810		
							779.042250	146.501582	487.342216	1119.882937		
							632.540781					632.540781
									$\frac{1}{2} = 316.2703605$			

面積計算書

工
区

ブロック

28

区
界

測量
者

測量
者

測量
者

備考

点	①	②	③	④	⑤	⑥	③ × ⑤	② × ⑥
	X	X-(定数)	X _{n-1} -X _{n+1}	Y	Y-(定数)	Y _{n-r} -Y _{n+1}	+	-
	浪野	516						
	-152	(152820.000)		-35	(-35390.000)			
4	834.331	-4.331	+5.750	393.782	-3.782	-23.488	21.746500	101.726528
5	845.982	-15.982	+15.376	390.356	-0.356	-1.395	5.473856	22.294890
6	849.707	-19.707	+8.782	392.387	-2.387	+19.215	20.962634	378.670005
7	854.764	-24.764	-9.475	409.571	-19.215	+21.457	185.435225	531.361148
40	840.232	-10.232	-20.433	413.844	-23.844	+21.457	487.204452	161.553048
							672.639677	48.182990
							624.456687	285.574466
								710.031153
								624.456687
							x ^{1/2} = 312.2283435	分筆後の座標なし
	浪野	518						
	-152	(-152820.000)		-35	(-35400.000)			
38	825.092	-5.092	+25.954	418.297	-18.297	-21.385	474.880338	108.892420
7	854.764	-34.764	+33.393	409.571	-9.571	+3.918	319.604403	136.205352
8	858.485	-38.485	-25.954	422.215	-22.215	+21.385	576.569110	823.001725
41	828.810	-8.810	-33.393	430.956	-30.956	-3.918	1033.713708	34.517580
							1610.281818	794.484741
							815.797077	143.410000
								759.207027
								815.797077
							x ^{1/2} = 407.8985385	

面 積 計 算 書

工
区

ブ
ック

28

計
者



計
者



備
考

項	①	②	③	④	⑤	⑥	③ × ⑤	② × ⑥
	X	X-(定数)	X _{n-r} -X _{n+1}	Y	Y-(定数)	Y _{n-r} -Y _{n+1}	+	-
	洪野	529						
	-152	(152790.000)		-35	(-35400.000)			
34	790.639	-0.639	+22.711	417.304	-17.304	-17.807		392.991144
36	816.354	-26.354	+28.722	409.739	-9.739	+2.678		279.723558
37	819.361	-29.361	-22.711	419.982	-19.982	+17.807	453.811202	
33	793.643	-3.643	-28.722	427.546	-27.546	-2.678	791.176212	9.755954
							1244.987414	672.714702
							572.272712	21.134627
								593.407339
								572.272712
								x 1/2 = 286.136356
	洪野	530						
	-152	(152780.000)		-35	(-35390.000)			
1	790.637	-10.637	+24.867	406.634	-16.634	-10.441		413.637678
2	813.470	-33.470	+25.717	399.918	-9.918	+3.105		255.061206
36	816.354	-36.354	-22.831	409.739	-19.739	+17.386	450.661109	
34	790.639	-10.639	-27.751	417.304	-27.304	+0.620	757.713304	
35	788.603	-8.603	-0.002	410.359	-20.359	-10.670	0.040718	91.794010
							1208.415131	668.698884
								202.854927
								742.571174
								539.716247
								x 1/2 = 269.8581235

面積計算書

工
区

ブロック

計
算
者



検査者



備考

点	①	②	③	④	⑤	⑥	③	×	⑤	②	×	⑥
	X	X-(定数)	$X_{n-r}-X_{n+1}$	Y	Y-(定数)	$Y_{n-r}-Y_{n+1}$	+		-	+		-
	角切											
I	-152787759	⁽⁻¹⁵²⁷⁸⁰⁾ -7.759	+2.034	-35407481	⁽⁻³⁵⁴⁰⁰⁾ -7.481	-9.725			15.216354	28.902275		
1	790637	-10.637	+0.844	406534	-6.634	-7.878			5.599096			30.613286
35	788603	-8.603	-2.878	410359	-10.359	+0.847	29.813202					7.286741
							29.813202		20.815450	28.902275		37.900027
							8.997752					8.997752
									<u>1/2 = 4.498876</u>			
	角切											
5	-152845982	⁽⁻¹⁵²⁸⁴⁰⁾ -5.982	-0.847	-35390356	⁽⁻³⁵³⁸⁰⁾ -10.356	-2.878	8.771532			17.216196		
II	848860	-8.860	+3.725	389509	-9.509	+2.031			35.421025			17.994660
6	849707	-9.707	-2.878	392387	-12.387	+0.847	35.649786					8.221829
							44.421318		35.421025	17.216196		26.216489
							9.000293					9.000293
									<u>1/2 = 4.5001465</u>			

面積計算書

工
区

ブ
ロ
ック

計
算
者



精
算
者



備
考

点	① X	② X-(定数)	③ $X_{n-1}-X_{n+1}$	④ Y	⑤ Y-(定数)	⑥ $Y_{n-1}-Y_{n+1}$	③ × ⑤	② × ⑥
隅切								
19	-152899.553	-9.553	+2.971	-35561.768	-1.768	+0.470	5.252728	4.012260
III	900.400	-10.400	-2.124	564.646	4.646	+2.458	9.868104	25.563200
20	897.429	-7.429	-0.847	564.226	4.226	-2.878	3.519422	21.380662
							13.447576	29.575460
							5.252728	21.380662
							8.194798	8.194798
							$\frac{1}{2} = 4.097399$	
隅切								
22	-152833.936	-3.936	+0.844	-35555.241	-5.241	+2.879	4.473004	11.331744
IV	830.966	-0.966	-3.814	554.821	4.821	+3.229	18.387294	3.186834
23	830.122	-0.122	+2.970	551.942	1.942	-0.420	5.767740	0.051240
							18.387294	11.382984
							10.191144	3.186834
							8.196150	8.196150
							$\frac{1}{2} = 4.098075$	

計年 月 算日	計 算 者	檢 查 者	野 中
---------------	-------------	-------------	--------

B. No. 28

各筆面積計算書

地 番	算 式	隅 切	地 積	摘 要
157 (A)			521.54	✓
156 (A)			302.73	✓
534 (A)			893.44	✓
520 (A)			437.86	✓
152 (A)			549.69	✓
154 (A)			655.25	✓
153 (A)			506.21	✓
155 (A)			855.26	✓
水路			223.25	
小堤			63.78	
520 (B)			825.19	✓
521			836.47	✓
522-2			475	
522-1			491.66	✓
523				
525			449.32	✓
529			286.13	✓
530			269.85	✓
524			138.54	✓
515			316.27	✓
517				
516			312.22	✓
518			407.89	✓
			403.59	
115			390.16	✓
118				
1-20-1			168.74	
116			181.49	✓
117-1			264.17	✓
117-2			352.17	✓
			402.17	

座標による面積計算 浜野520(口)

No. _____

4号地

点名	X	$X_{i-1} - X_{i+1}$	Y	$Y_{i-1} - Y_{i+1}$	① × ④		② × ③	
	①	②	③	④	+	-	+	-
10	807.355	-8.573	474.305	8.220	6636.458100			4066.216765
5	817.469	-12.348	471.340	-4.624		3779.976156		5820.106320
19	819.703	5.997	478.929	-10.008		8203.587624	2872.137213	
14	811.472	10.807	451.348	-0.631		512.035532	5201.927836	
8	808.896	4.117	479.560	7.063	5677.054528		1974.348520	
				差	-162.090184		162.090184	
				1/2	81.045092		24.51 ^坪	

145

3号地

5	817.469	-7.746	471.340	10.515	8595.686535			3650.999640
6	827.449	-12.212	468.414	-4.657		3853.479993		5720.27768
20	829.681	7.746	475.997	-10.515		8724.095715	3687.072762	
19	819.703	12.212	478.929	4.657	3817.256871		5848.680928	
				差	-164.487302		164.487302	
				1/2	82.243651		24.87 ^坪	

139坪

C号地

6	827.449	-7.748	468.414	10.509	8695.661541			3629.27672
7	837.429	-11.921	465.488	-3.693		3097.625297		5549.082468
25	839.370	-12.71	472.107	-7.858		6595.769460		600.047997
21	838.700	9.689	473.346	-3.890		3262.543000	4586.249194	
20	829.681	11.251	475.997	4.932	4091.986692		5355.442447	
				差	-163.289224		163.289224	
				1/2	81.644612		24.69 ^坪	

133

D号地

48	847.411	-12.776	462.561	-6.586		5581.068266		5909.679336
13	852.205	7.229	472.074	-12.455		10589.303275	3412.622966	
27	840.182	10.616	475.016	-1.011		8494.74002	5062.769856	
16	839.589	1.682	473.085	1.670	1407.113630		701.111970	
21	838.700	0.219	473.346	0.978	820.248620		103.662774	
25	839.370	12.71	472.107	7.858	6595.769460		600.047997	
7	837.429	-8.044	465.488	9.566	7994.097234		3742.989008	
				差	-207.547199		207.547199	
				1/2	103.773599		21.39 ^坪	

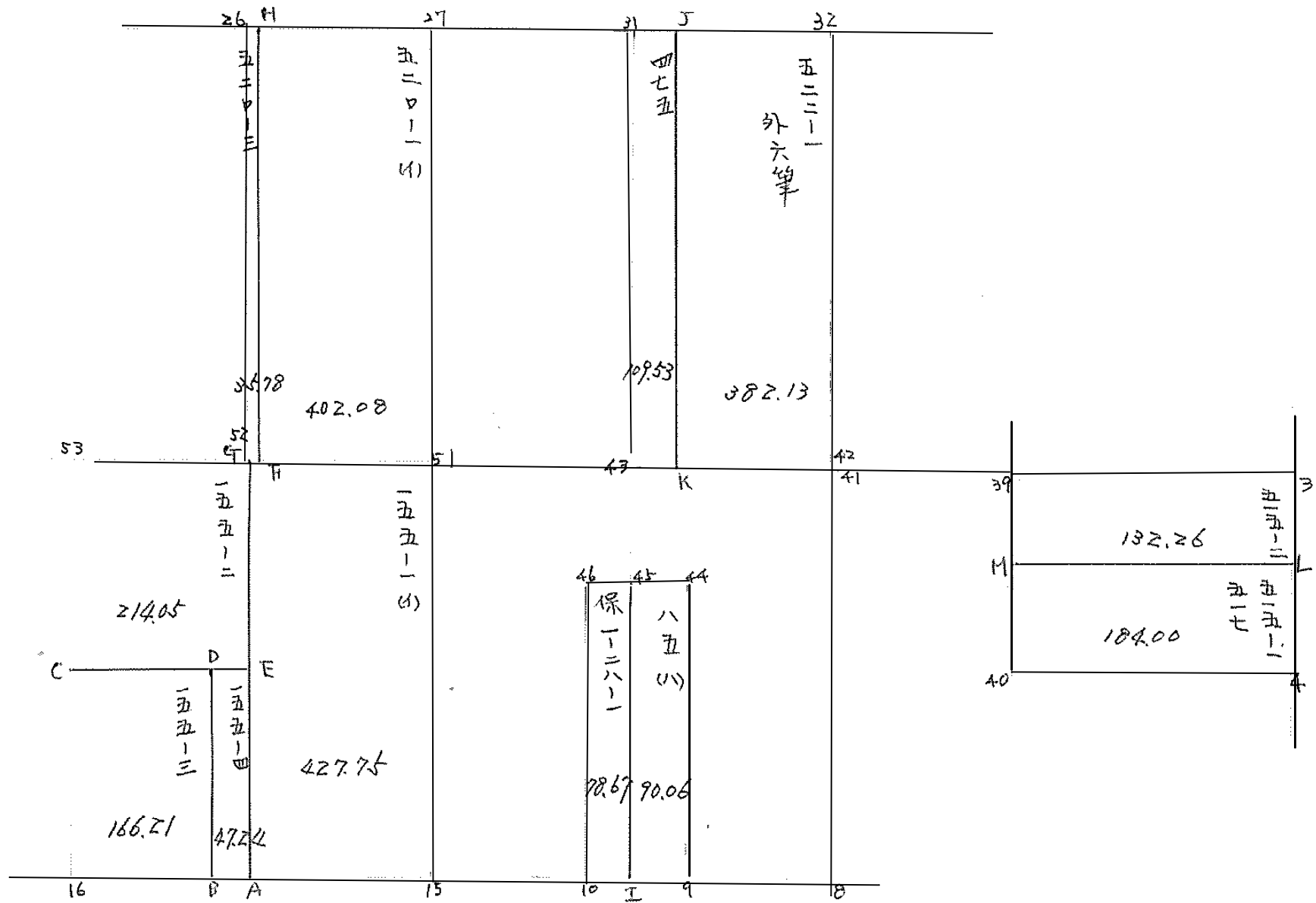
座標による面積計算 浜野520(口)

No. 2

点名	X	$X_{i-1} - X_{i+1}$	Y	$Y_{i-1} - Y_{i+1}$	① × ④		② × ③	
	①	②	③	④	+	-	+	-
E号地	50	852.978	7.216	481.516	-12.376		10556.455708	3474.619656
	12	842.989	11.904	484.450	2.603	3037.289367		5767.861700
	26	841.072	3.150	477.913	7.235	6085.155920		1505.425950
	24	839.839	0.299	477.215	0.972	816.323508		142.687285
	17	840.773	-0.343	476.941	2.199	1848.859827		163.590763
	27	840.182	-9.432	475.016	4.867	4089.165790		4480.350927
	13	850.205	-12.796	472.076	-6.500		5526.332500	6040.658904
				差	-205.993812			205.993812
				1/2	102.996906 ^{m²}			31.15 ^坪
F号地	11	833.011	12.176	487.382	4.594	3826.86534		5934.36322
	23	830.813	-6.828	479.856	10.167	8446.875771		2076.456768
	24	839.839	-10.259	477.215	1.943	1631.807177		4895.728685
	26	841.072	-3.150	477.913	-7.235	6085.155920		1505.425950
	12	842.989	8.061	484.450	-9.469	7982.260841		3905.151650
				差	-161.883273			161.883279
				1/2	80.941637 ^{m²}			24.48 ^坪
G号地	11	833.011	7.780	487.382	-10.457		8710.796027	3791.831960
	10	823.033	12.179	490.313	4.604	3789.343930		5971.822027
	22	820.832	-7.780	482.778	10.457	8583.440724		3756.010280
	23	830.813	-12.179	479.856	-4.604		3825.063052	5844.166224
				差	-163.174923			163.174923
				1/2	81.587461 ^{m²}			24.68 ^坪
H号地	10	823.033	7.712	490.313	-10.506		8646.782698	3879.356256
	29	812.920	11.715	493.284	2.492	2025.796440		5778.822060
	9	811.318	0.169	487.821	2.140	6604.939838		82.44749
	15	812.751	-9.514	485.123	5.043	4090.702293		4615.650500
	22	820.832	-10.282	482.778	-5.170		4243.701440	4963.923396
				差	-161.046367			161.046367
				1/2	80.523183 ^{m²}			24.35 ^坪
				計				
				差				
				1/2				

137

138



面積計算書

工区

\

ブロック

28

計算者



精算者

備考

浸475

点	①	②	③	④	⑤	⑥	③ × ⑤		② × ⑥	
	X	X - (定数)	X _{n-1} - X _{n-1}	Y	Y - (定数)	Y _{n-1} - Y _{n-1}	+	-	+	-
31	-152 801.714	(-152.500) 1.714	-32.411	-35 455.069	(-35.442) 13.069	+6.013	423.579359			10.306282
J	800.774	0.774	+30.530	451.864	9.864	-12.423		301.141992 ⁹²⁰	9.615402	
K	832.244	32.244	+32.411	442.646	0.646	-6.013		20.937506	193.883192	
K3	833.185	33.185	-30.530	445.851	3.851	+12.423	117.571030			412.257255
							541.150389	322.085426	203.498594	422.563537
							219.064963			219.064963
							Σ = 109.53250815			

面積計算書

工
区

1

ブ
ロ
ック

28

計
算
者



精
算
者

備
考

35
522-15 | 67

点	①	②	③	④	⑤	⑥	③ × ⑤		② × ⑥	
	X	X - (定数)	X _{n-1} - X _{n+1}	Y	Y - (定数)	Y _{n-1} - Y _{n+1}	+	-	+	-
丁	-152 800.774	-152.790 10.774	-34.747	35. 451.864	-35.430 21.864	-1.957		759.708608		21.084718
32	797.497	7.497	+28.183	440.689	10.689	-20.408	301.248087			152.998776
42	828.957	38.957	+34.747	431.456	1.456	+1.957	50.591632		76.238849	
✓	832.244	42.244	-28.183	442.646	12.646	+20.408		756.402218	862.115552	
							751.839719	1116.110626	938.25440	174.083494
								764.270907	864.290907	
								× 1/2 = 382.1354		

面積計算書

工
区

1

ブ
ロ
ック

28

計
算
者



精
算
者

備
考

浪 155-3

点	①	②	③	④	⑤	⑥	③ × ⑤		② × ⑥	
	X	X - (定数)	$X_{n-1} - X_{n-2}$	Y	Y - (定数)	$Y_{n-1} - Y_{n-2}$	+	-	+	-
C	-152 867.922	(-152860) 2.922	+ 18.091	-35 510.094	(-35490) 20.074	+ 5.687	262.158734			65.01244
D	864.944	4.944	- 12.134	499.952	9.952	+ 14.561		120.757568		71.989586
B	880.056	20.056	- 18.091	495.513	6.513	- 5.687		99.735680		114.058472
16	883.035	23.035	+ 12.134	505.639	15.639	- 14.561	189.763626			221.412606
							142.933260	220.492257	117.041998	449.471107
							222.429109	$\frac{166.314545}{m^2}$		222.429109

面積計算書

工区

ブロック

28

計算者

精算者

備考

決 155-Y

点	①	②	③	④	⑤	⑥	③ × ⑤		② × ⑥	
	X	X - (定数)	X _{n-1} - X _n	Y	Y - (定数)	Y _{n-1} - Y _n	+	-	+	-
D	-152 864.944	(-152860) 4.944	+ 15.958	-35. 499.952	(-35490) 9.952	- 1.561	58.814016			7.717584
E	864.098	4.098	- 14.265	497.074	2.074	+ 7.317		100.910610		9.985066
A	879.209	19.209	- 15.958	492.635	2.635	+ 1.561		12.069230		29.985249
B	880.056	20.056	+ 14.265	495.513	5.513	- 7.317	78.642961			146.749712
							27.446961	162.969960		69.970315
							96.097021	^{m²} 47.2484105		94.497021

面積計算書

工
区

\

プロ
ック

28

計
算
者



精
算
者

備
考

決 155-2

点	①	②	③	④	⑤	⑥	③ × ⑤		② × ⑥	
	X	X - (定数)	X _{n-1} - X _n	Y	Y - (定数)	Y _{n-1} - Y _n	+	-	+	-
53	852.761	(-152.840) 12.761	+ 18.980	514.524	(-35.490) 24.524	+ 8.548	165.465520			109.081028
G	848.942	8.942	- 11.377	501.526	11.526	+ 17.450		120.670262		156.037900
E	864.098	24.098	- 18.980	497.074	7.074	- 8.548		124.264520		205.989706
C	867.922	27.922	+ 11.777	510.074	20.074	- 17.450	227.678938			487.238900
							120.670262	241.924782	261.118928	592.228606
							128.109676	^{m²} 214.054838		428.109676

面積計算書

工
区

プロ
ック

28

計
算
者

精
算
者

備
考

現. 155-1(A)

点	①	②	③	④	⑤	⑥	③ × ⑤		② × ⑥	
	X	X - (定数)	X _{n-1} - X _n	Y	Y - (定数)	Y _{n-1} - Y _n	+	-	+	-
G	⁻¹⁵² 848.942	2.942	-24.089	⁻³⁵ 501.526	21.526	-4.120				
51	845.120	5.120	+26.089	488.515	18.515	-21.901	28.477570 28.054270	1074.689814		26.841040
15	875.380	25.380	+24.089	479.625	9.625	+4.120	28.106625		145.765600	
A	879.209	29.209	-26.089	492.635	22.635	+21.901		598.422030 605.214630	258.716309	
							817.606175 822.160695 855.507749 856.742749	1.672115924 1.679941144	1004.481909	148.974160
								1/2	255.507749	
									427.753874	

面積計算書

工区

1

ブロック

28

計算者

精算者

備考

24号 85C10

点	①	②	③	④	⑤	⑥	③ × ⑤		② × ⑥	
	X	X - (定数)	X _{n-1} - X _n	Y	Y - (定数)	Y _{n-1} - Y _n	+	-	+	-
45	841.766	1.766	-22.24P	443.337	13.337	+2.326				
44	840.612	0.612	+19.93P	439.40P	9.40P	-10.181	187.60605/			6.230772
9	861.705	21.705	+22.24P	433.156	3.156	-2.326	70.217844			10.485A30
I	862.861	22.861	-19.93P	437.083	7.083	+10.181				
							141.227P37	232,747841		
							257.8238P5	437.162850	276.855557	16.716602
							180.138P55	180.138P55		
							<u>1/2 = 90.06P</u>			

面積計算書

工
区

1

ブ
ロ
ック

28

計
算
者

精
算
者

備
考

保 1-28-1

点	①	②	③	④	⑤	⑥	③ × ⑤		② × ⑥	
	X	X - (定数)	X _{n-1} - X _n	Y	Y - (定数)	Y _{n-1} - Y _n	+	-	+	-
	152	152.840		35	35.430					
46	842.772	2.772	-22.105	446.764	16.764	+2.820		370.568220		2817040
45	841.766	1.766	+20.088	443.337	13.337	-9.681	267.126993			17.096646
工	862.861	22.861	+22.105	437.083	7.083	-2.820	156.569715			64.468020
10	863.871	23.871	-20.088	440.517	10.517	+9.681		211.276013		231.095117
								424.496708	181.844233	238.11219181564666
								157.247525	157.347525	
								1/2 = 78.673		

面積計算書

工
区

プロ
ック

28

計
算
者

精
算
者

備
考

※ 515-1
517

点	①	②	③	④	⑤	⑥	③ × ⑤		② × ⑥	
	X	X - (定数)	X _{n-1} - X _{n+1}	Y	Y - (定数)	Y _{n-1} - Y _{n+1}	+	-	+	-
M	⁻¹⁵² 871.786	⁻¹⁵²⁻⁸²⁰ 11.786	-14.338	⁻³⁵ 416.328	⁻³⁵⁻³⁹⁰ 26.328	-17.580				
L	825.894	5.894	+2.545	396.264	6.264	-22.546	15.94/880			
4	834.331	14.331	+214.338	393.782	3.782	+17.580	54.226316		251.938/80	
40	840.232	20.232	-2.545	413.844	23.844	+22.546			60.692/80	456.150672
							70.1681/6	438.173844	708.08/652	840.084004
								368.005648	368.005648	
								$\frac{1}{2} = \frac{184}{100.00}$		

面積計算書

工区

ブロック

28

計算者

精算者

備考

没 515-2

点	①	②	③	④	⑤	⑥	③ × ⑤		② × ⑥	
	X	X - (定数)	X _{n-1} - X _n	Y	Y - (定数)	Y _{n-1} - Y _n	+	-	+	-
3P	825.718	15.718	- 11.960	418.113	28.113	- 18.279				
3	819.826	9.826	+ 0.176	398.049	8.049	- 21.849	1.416624			
L	825.894	15.894	+ 11.960	396.264	6.264	+ 18.279	74.917440			
M	831.786	21.786	- 0.176	416.328	26.328	+ 21.849	4.633728			
							76.334064	340.865208	766.528740	101.997596
								264.531144	264.531144	
								$\frac{1}{2} = 132.265$		

面積計算書

工区

1

ブロック

28

計算者

精算者

備考

1/2 520-3

点	①	②	③	④	⑤	⑥	③ × ⑤		② × ⑥	
	X	X - (定数)	X _{n-1} - X _n	Y	Y - (定数)	Y _{n-1} - Y _n	+	-	+	-
26	818.008	8.008	+	510.635	10.635	- 8.026				64.272208
17	817.696	7.696	- 30.627	509.570	9.570	+ 10.156		292.100290	78.160576	
F	848.635	38.635	- 31.251	500.479	0.479	+ 8.026		14.969229	310.080570	
52	848.947	38.947	+ 30.627	501.544	1.544	- 10.156	47.288088			295.505732
							279.642473	228.69617	288.241086	449.817940
							21.572814	25.786427		21.572814

