

BLOCK NO. 8-2

画地略図

工区

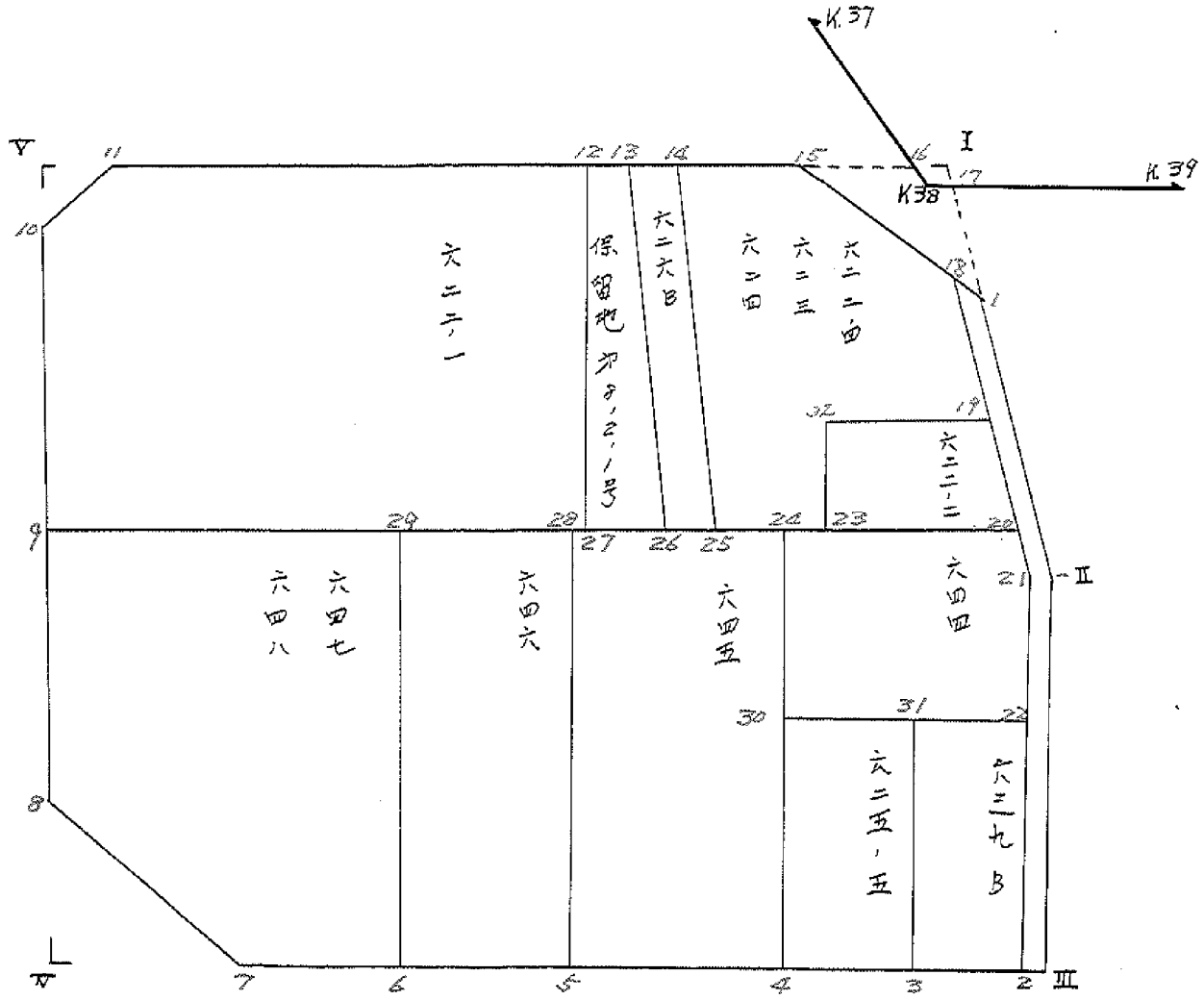
オ2

ブロック

8-2

記入者

点検者



面積計算書

工区

第2

ブロック

d-d

計算者



算算者



備考

全備 2324

点	①	②	③	④	⑤	⑥	⑦ × ⑧		② × ⑤	
	X	X-(定数)	X _{n-1} -X _{n+1}	Y	Y-(定数)	Y _{n-1} -Y _{n+1}	+	-	+	-
I	152.267.251	17.251	+ 50.090	38.437.048	17.048	- 89.045			853.934320	1535.597765
II	152.126.036	56.036	+ 72.231	38.428.021	8.021	- 1.212			583.699711	73.519232
III	152.139.482	29.482	+ 12.685	38.425.736	15.736	+ 98.457			99.611160	8810.129274
IV	152.112.721	68.721	- 83.536	38.426.538	106.538	+ 81.060	8899.759368			5591.140560
V	152.044.946	5.946	- 51.470	38.617.096	97.096	- 89.490	4897.531200		538.107540	
							13897.289488	1637.244191	214.224537	114401.269824
							12260.045297			12260.045297
										$\times \frac{1}{5} = 6130.022648$
10	152.044.913	3.913	- 0.420	38.617.442	3.542	+ 2.971	1.487640			11.625523
11	152.044.946	0.946	- 2.547	38.617.096	3.096	- 3.417	7.835512		3.232482	
12	152.046.366	1.366	+ 2.967	38.614.125	0.125	+ 0.446			0.370875	0.609236
							9.373152	0.370875	3.232482	12.234759
							9.002277			9.002277
										$\times \frac{1}{10} = 40.5011385$

面地計算

面積計算書

工区

第2

ブロック

第2

計算者



精算者



備考

△=ニ, =, △=△ B

点	①	②	③	④	⑤	⑥	③ × ⑤		② × ⑥	
	X	X-(定数)	X _{n-1} -X _{n+1}	Y	Y-(定数)	Y _{n-1} -Y _{n+1}	+	-	+	-
		-152,080			-38,520					
19	152,070.077	10.899	+ 9.021	38,433.120	3.120	- 11.883		28.145520	129.572817	
20	152,078.420	18.420	+ 5.697	38,431.321	1.381	+ 11.152		7.867557		205.419840
23	152,076.596	16.596	- 9.021	38,444.272	4.272	+ 11.883	128.747712			197.210268
22	152,089.379	9.399	- 5.697	38,443.264	12.264	- 11.152	75.565008		104.817648	
							204.312720	36.013077	234.330465	408.630108
							168,299643			168,299643
							x 1/2 = 84.1498215			
		-152,082			-38,563					
25	152,073.763	31.763	+ 29.822	38,464.294	1.294	+ 3.809		38.589668		120.985267
26	152,073.287	31.287	- 30.773	38,467.662	4.662	+ 2.926	143,463726			91.525762
13	152,062.990	0.990	- 29.822	38,467.220	4.220	- 3.809	125,848840		3,770910	
14	152,063.465	1.465	+ 30.773	38,463.853	0.853	- 2.926		26,249369	41,286590	
							269,312566	64,829027	8,057500	212.531029
							204,473529			204,473529
							x 1/2 = 102.2367645			

面積計算書

工区

北

ブロック

8-2

計算者

松本

精算者



備考

624
623
622-14, 622-2

点	①	②	③	④	⑤	⑥	+	-	②	×	⑥
	X	X-(定数)	X _{n-1} -X _{n+1}	Y	Y-(定数)	Y _{n-1} -Y _{n+1}			+		-
	-152,	-152,060		-38,	-38,530						
14	053.465,	3.465,	27.617,	563.853,	33.853,	19.405,	934.985007,		67.238375,		
15	066.144,	6.144,	7.710,	544.887,	14.887,	26.635,	144.572190,	43.645440,			
18	073.175,	13.175,	24.755,	537.718,	7.718,	11.757,	178.881390,	135.036675,			
19	090.899,	30.899,	16.275,	533.120,	3.120,	6.046,	50.840400,	18.91535,			
32	089.470,	29.470,	5.697,	543.264,	13.264,	11.152,	75.565008,	328.619440,			
23	096.376,	36.376,	4.273,	544.272,	14.272,	21.030,	61.269595,	769.613880,			
25	093.763,	33.763,	33.131,	564.274,	34.274,	19.581,	1136.196814,	51.113303,			
							2071.180821,	510.928884,	385940340,	1946.171977,	
							1560.251637,		1560.251637,		
							1/2 = 780.1258185,				
19	090.899,	10.899,	8.750,	533.120,	3.120,	11.823,	27.924000,	127.512817,			
20	098.420,	18.420,	5.697,	531.381,	1.381,	11.152,	7.267357,	205.49840,			
23	096.376,	16.576,	8.750,	544.272,	14.272,	11.823,	127.734400,	197.210268,			
32	089.470,	9.470,	5.697,	543.264,	13.264,	11.152,	75.565008,	105.409440,			
							203.297408,	35.791357,	235.122257,	402.630108,	
							167.507851,		167.507851,		
							1/2 = 83.7539255,				

分筆あり

面積計算書

工区

第

ブロック

第

計算者



測量者



備考

六四四

六三九B

No	①	②	③	④	⑤	⑥	③ × ⑤		② × ⑥	
	X	X-(定数)	X _{n-1} -X _{n+1}	Y	Y-(定数)	Y _{n-1} -Y _{n+1}	+	-	+	-
20	152,020.420	8.420	+10.304	38,421.38	11.381	-20.744			117,269824	174,664480
21	152,106.038	16.038	+18.484	38,429.620	9.620	+0.726			177,816080	11,640588
22	152,116.904	26.904	+5.849	38,432,107	12.107	+24.441			70,813943	657,560664
23	152,111.227	21.887	-21.190	38,444,061	34.061	+18.257	721,07370			399,590959
24	152,074.724	5.734	-13.467	38,440,364	30.364	-22.680	408,911988		20,047120	
							1129,983358	365,899747	304,711600	1062,795211
							764,083611			764,083611
							× 1/2 = 382,0418055			
25	152,116.904	6.904	+24.611	38,432,107	21.107	-5.268			51,855377	36,370272
26	152,139.148	29.148	+19.875	38,437,192	7.198	+15.449			143,060250	450,307452
27	152,136.779	26.779	-24.611	38,447,456	17.556	+5.268	432,070716			141,071772
28	152,114.537	4.537	-19.875	38,442,466	12.466	-15.449	247,761750		70,092113	
							679,832466	194,915627	106,462385	591,379244
							484,916834			484,916834
							× 1/2 = 242,458417			

面積計算書

工区

中2

ブロック

8-2

計算者



精算者



備考

六=五-五, 六四五

点	①	②	③	④	⑤	⑥	③ × ⑤		② × ⑥		
	X	X-(定数)	X _{n-1} -X _{n+1}	Y	Y-(定数)	Y _{n-1} -Y _{n+1}	+	-	+	-	
3	-152,136.779	-152,110 26.779	+ 19.591	-38,547.556	-38,540 7.556	+ 16.686			148,029.596		446,834.394
4	-152,134.128	24.128	- 24.892	-38,559.152	19.152	+ 6.505	476,731.584				156,952.640
30	-152,111.887	1.887	- 19.591	-38,554.061	14.061	- 16.686	275,469.051			31,486.482	
31	-152,114.537	4.537	+ 24.892	-38,542,466	2,466	- 6.505			61,383.672	29,513.185	
							152,200.635	209,413.268	60,999.667		603,787.034
							542,787.367				542,787.367
									x 1/2 = 271,393.6835		
4	-152,134.128	-152,090 44.128	+ 32.770	-38,559.152	-38,550 9.152	+ 33.385			299,911.040		1473,213.280
5	-152,128.504	38.504	- 41.939	-38,583.749	33.749	+ 16.271	1415,399.311				626,498.584
28	-152,092.189	2.189	- 32.770	-38,575.423	25.423	- 33.385	833,111.710			73,079.765	
24	-152,095.734	5.734	+ 41.939	-38,550.364	0.364	- 16.271			15,265.796	93,297.914	
							248,511.021	315,176.836	116,377.679	2099,711.864	
							1933,334.185				1933,334.185
									x 1/2 = 966,667.0925		

面積計算書

工区

カ子

ブロック

8-2

計算者



精算者



備考

六四六, 六四七
六四八

点	①	②	③	④	⑤	⑥	③ × ⑤		② × ⑥	
	X	X-(定数)	X _{n-1} -X _{n+1}	Y	Y-(定数)	Y _{n-1} -Y _{n+1}	+	-	+	-
5	-152,128.504	-152,090 38,504	+ 33.636	-38,583.749	-38,590 13.749	+ 20.043		462.461364		771.735672
6	-152,125.825	35.825	- 38.004	-38,595.466	25.466	+ 3.612	967.909864			129.399900
29	-152,090.500	0.500	- 33.636	-38,587.361	17.361	- 20.043	583.954596			10.021500
28	-152,092.189	2.189	+ 38.004	-38,575.423	5.423	- 3.612		206.095692	7.906668	
							651.764460	668.557056	17.828168	901.135572
							883.207404			883.307404
										$\times \frac{1}{2} = 441.603702$
6	-152,125.825	-152,080 45.825	+ 30.171	-38,595.466	-38,580 15.466	+ 30.647		466.624686		1404.398795
7	-152,120.671	40.671	- 15.757	-38,618.008	38.008	+ 29.771	598.892056			1210.816341
8	-152,110.068	30.068	- 35.010	-38,625.237	45.237	+ 3.557	583.747370			106.951876
9	-152,085.661	5.661	- 19.568	-38,621.565	41.565	- 37.876	913.343920			211.446036
29	-152,090.500	10.500	+ 40.164	-38,587.361	7.361	- 26.099		295.647204	274.039500	
							2995.983346	762.271890	488.455536	272.166982
							2233.711456			2233.711456
										$\times \frac{1}{2} = 1116.855728$

分筆後の座標なし

面積計算書

工区

市子

ブロック

8-2

計算者



精算者



備考

保留地

8-2-2-1号, 六=一の

点	①	②	③	④	⑤	⑥	③ × ⑤		② × ⑥	
	X	X-(定数)	Xn-1-Xn+1	Y	Y-(定数)	Yn-1-Yn+1	+	-	+	-
26	-152,093.287"	^{-152,060} 33.287"	+ 29.311"	-38,567.662"	^{-38,560} 7.662"	+ 7.411"			224.580882"	246.689957"
27	-152,092.301"	32.301"	- 30.716"	-38,574.631"	14.631"	+ 2.523"	449.405796"			81.495423"
12	-152,062.571"	2.571"	- 29.311"	-38,570.185"	10.185"	- 7.411"	298.532525"			19.053681"
13	-152,062.990"	2.990"	+ 30.716"	-38,567.220"	7.220"	- 2.523"			221.769520"	7.543790"
							747.938331"	-446.350402"	26.597457"	328.185380"
							301.587929"			301.587929"
							分筆あり		$\times \frac{1}{2} = 150.7939645"$	
27	-152,092.301"	^{-152,050} 42.301"	+ 23.090"	-38,574.631"	^{-38,570} 4.631"	+ 51.380"			⁶⁹⁸²⁴⁰ 106.929790"	2173.425380"
9	-152,085.611"	35.661"	- 33.388"	-38,621.565"	51.565"	+ 42.911"	172.652220"			^{1528.20362} 1530.249171"
10	-152,058.913"	8.913"	- 29.295"	-38,617.542"	47.542"	- 7.440"	^{1390.765770} 1392.742890"			66.312720"
11	-152,056.366"	6.366"	+ 3.658"	-38,614.125"	44.125"	- 47.357"			161.409250"	301.674662"
12	-152,062.571"	12.571"	+ 35.935"	-38,570.185"	0.185"	- 39.494"			6.647975"	496.479074"
							^{3112.079010} 3114.395110"	^{272.755465} 274.987015"		^{3701.559000} 3703.674095"
							^{2737.262565} 2839.408095"			2839.408095"
							分筆後の座標なし		$\times \frac{1}{2} = 1419.7040475"$	

面積計算書

工区

和

ブロック

8-2

計算者

三和

測定者



備考

水路

順	①	②	③	④	⑤	⑥	③ × ⑤		② × ⑥	
	X	X-(定数)	X _{n-1} -X _{n+1}	Y	Y-(定数)	Y _{n-1} -Y _{n+1}	+	-	+	-
		-152,070			-38,520					
I	142,074.966	4.966	+32.861	38,432.264	15.264	-9.137		501,590,304	45,374,342	
II	142,106.036	36.036	+64.516	38,428.081	8.081	+0.472		521,353,796		17,008,992
III	142,137.482	69.482	+33.112	38,424.736	15.736	+9.117		521,050,432		633,467,394
IV	142,137.148	69.148	-33.464	38,437.198	17.198	-6.116	575,169,912			422,909,168
V	142,106.038	36.038	-65.973	38,429.620	9.620	+0.020	634,660,260			0,720,760
VI	142,073.175	3.175	-31.072	38,437.218	17.218	+5.644	534,997,696			17,919,700
							1744,827,868	1543,994,532	468,283,510	669,116,846
							200,833,836			200,833,836
							$\times \frac{1}{2} = 100,416,668$			

面積計算書

工区

和

ブロック

8-2

計算者



箱算者



備考

2321, 2321

点	①	②	③	④	⑤	⑥	③ × ⑤		② × ⑥	
	X	X-(定数)	X _{n-1} -X _{n+1}	Y	Y-(定数)	Y _{n-1} -Y _{n+1}	+	-	+	-
		-152,066			-38,535					
I	152,067.251	1.251	+ 8.822	38,527.048	2.048	- 9.625		18,067456	12,040875	
1	152,074.966	8.966	- 1.107	38,535.264	0.264	+ 7.841	0.292248			70,302406
15	152,066.144	0.144	- 7.715	38,544.229	9.229	+ 1.784	56,293605			0.256896
							76,585883	18,067456	12,040875	70,559302
							58,518427			58,518427
							$\times \frac{1}{2} = 29,2592135$			
		-152,110			-38,610					
7	152,120.671	10.671	+ 8.653	38,618.008	8.008	+ 1.301		69,293224		13,882971
10	152,118.721	8.721	- 10.603	38,626.538	16.538	+ 7.229	175,352414			63,046109
8	152,110.068	0.068	+ 1.950	38,625.237	15.237	- 8.530		29,712150	0.580040	
							175,352414	99,005374	0.580040	76,927080
							76,347040			76,347040
							$\times \frac{1}{2} = 38,173520$			

計年月
算日

計算者

検査者

B.NO. ^{市2} 2-2

各筆面積計算書

地番	算式	隅切	地積	摘要
1	622-4, 623, 624		780 12	
2	622-2		83 75	
3	644		382 04	
4	629 B		242 45	
5	625-5		271 39	
6	645		966 66	
7	646		441 60	
8	647, 648		1116 85	
9	保留地市8-2-1号		150 79	
10	622-1		1419 70	
11	626 B		102 23	
	水路市3号線		100 41	
	隅切 I	27 25		
	II	38 17		
	V	4 50		
	計		6129 91	
	全体		6130 02	
			差 0 11	
	換地面積		5806 79	10 筆
	保留地面積		150 79	1 筆
	水路		100 41	
	計		6057 99	

面積計算書

工
区

才 = 地区

プロ
ック

8-2

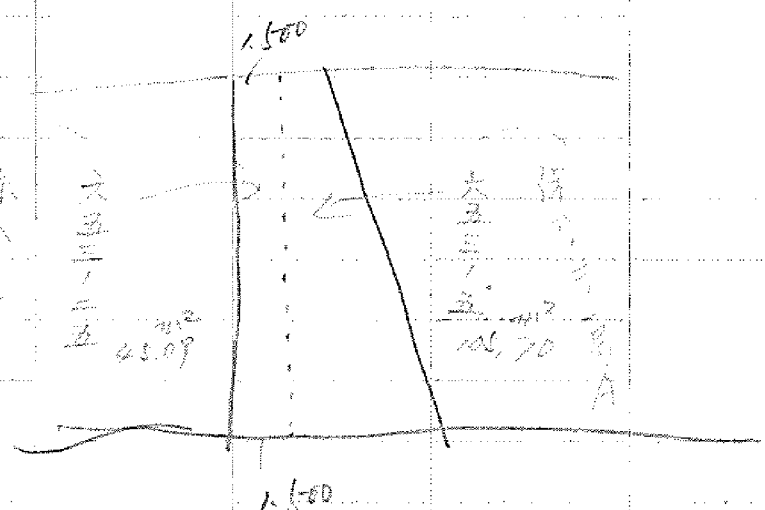
計
算
者

積
算
者

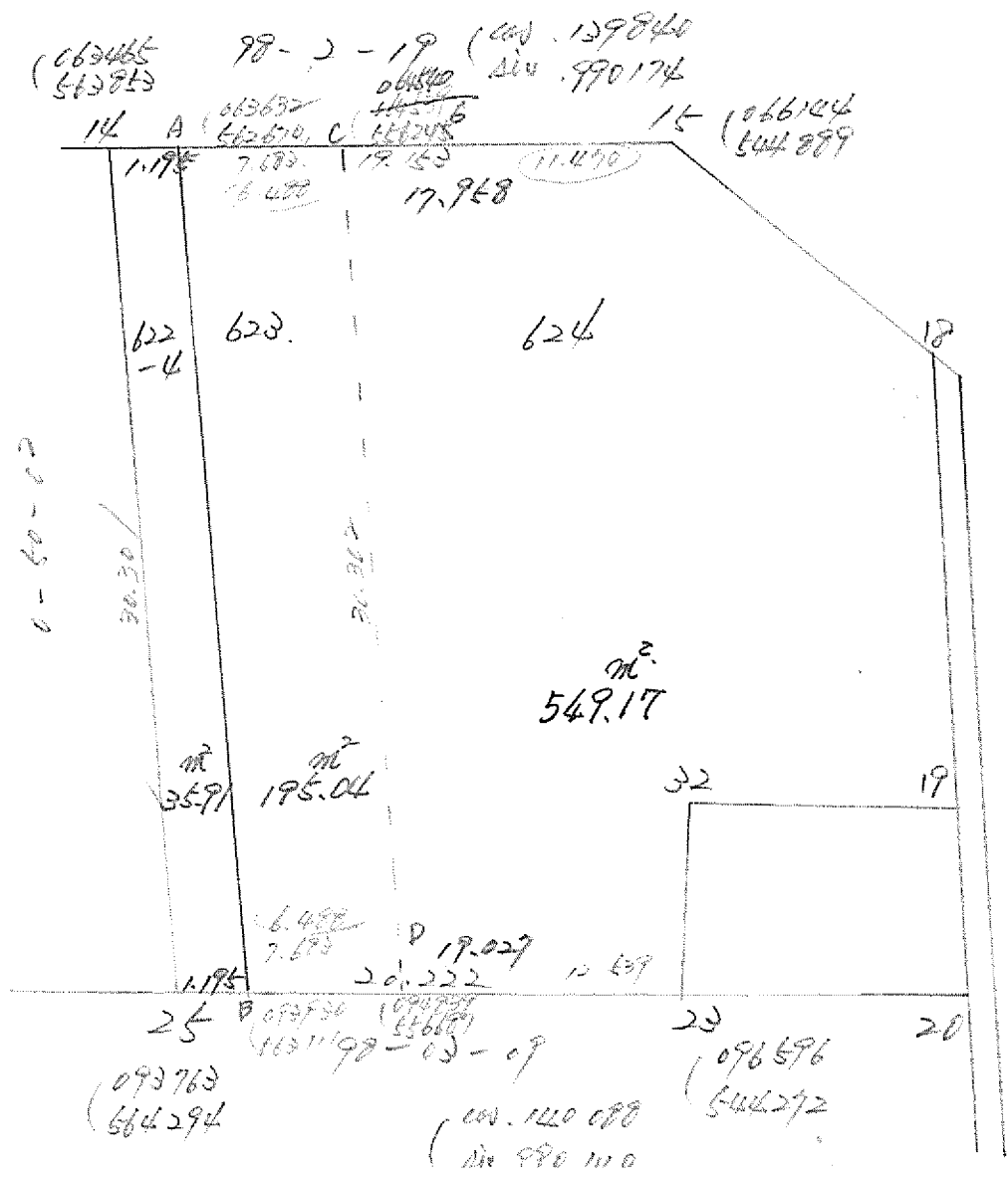
備
考

保留地 8-2-1号
A.

点	①	②	③	④	⑤	⑥	⑦	×	⑧	⑨	×	⑩
	X	X-(定数)	X _{n-1} -X _{n+1}	Y	Y-(定数)	Y _{n-1} -Y _{n+1}	+	-	+	-		
12	-12 062 571	-2.571	-29.520	-38 570 185	-10.185	-5.932	200.661200			15.251172		
12'	062 781	-2.781	+29.940	-568 699	-8.699	+2.961		260.448060				8.234541
27'	-92 511	-22.511	+29.520	-573 146	-12.146	+5.932		388.069930				192.855262
27	-92 301	-22.301	-29.940	-574 631	-14.631	-2.961	428.052140			95.643261		
							738.713340	648.517980	110.894433	201.089793		
								90.195360	90.195360			
								45.097680				



12'-27' 8-30-26 30.061



面積計算書

区

ブロック

計算書

積算書

備考

新保622-4

点	(1) X	(2) X - (定数)	(3) X _{n-1} - X _n	(4) Y	(5) Y - (定数)	(6) Y _{n-1} - Y _n	(7) +	(8) ×	(9) -	(10) +	(11) ×	(12) -
14	063465	2.465	+30.121	563853	3.853		116.094743					
A	063632	2.632	-20.465	562670	2.670			81.341550				
B	093930	22.930	-20.121	563111	2.111			93.727521				
25	093762	22.762	+20.465	564294	4.294		130.816710					

計 246.911453 175.079091

計 71.822362

1/2 = 25.916181 ≒ 25.91 m²

合筆あり

A	063632	2.632	+29.390	562670	12.670		272.271300					
C	064540	4.540	-21.207	556246	6.246			194.918932				
D	094839	24.839	-29.390	556687	6.687			176.530930				
B	093930	22.930	+21.207	563111	12.111		409.154977					

781.526277 291.449852

270.076425

195.038225 ≒ 195.03 m²

校算により 195.04 m²

合筆あり

622

面積計算書

区

ブロック

計算者

精算者

備考

022-4

点	①	②	③	④	⑤	⑥	③ × ⑤		② × ⑥	
	X	X - (定数)	X _{n-1} - X _n	Y	Y - (定数)	Y _{n-1} - Y _n	+	-	+	-
14	063465	3.465	+ 29.22 ³	563853	13.853	+ 8.049	326219			
✓	064539 ⁴⁰	4.540 ⁶	- 21.274	556245	6.246	+ 7.166	404.840072	762004		
∇	094839	34.839	- 29.22 ³	556687	6.687	- 8.049		195.920620	44201	
25	093763	33.763	+ 21.274	564294	14.294	- 7.166	448.459956	195.420800		
							286195	376205		
							853.300228	391.361518		
							461.948510	461.9189		461.9189
							230.954785	230.95702		
							230.984255	≅ 230.9700		
							23			