

BLOCK NO. 24

画地略図

工区

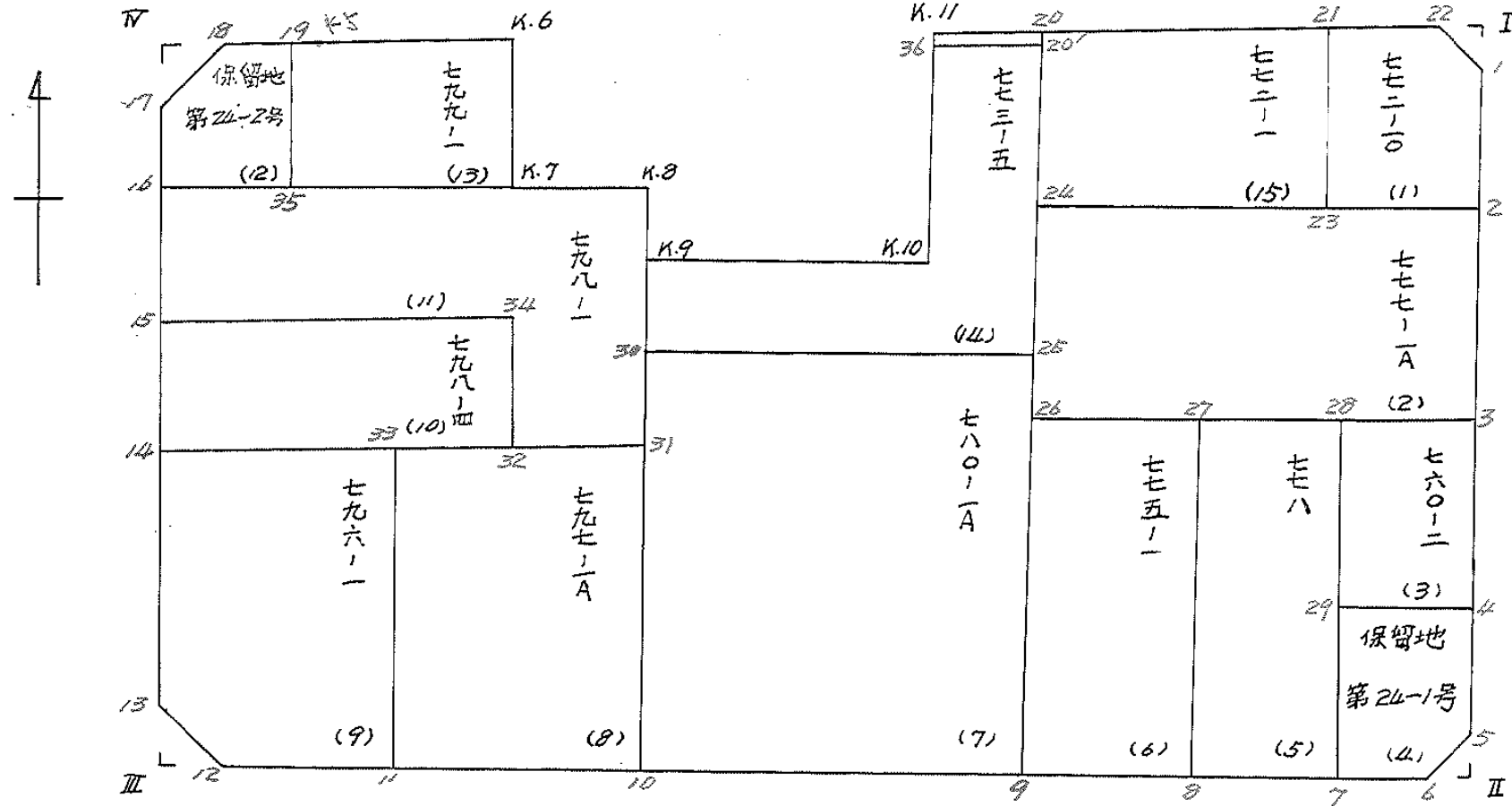
第2

ブロック

24

記入者

点検者



面積計算書

工
区

※2

ブ
ロ
ック

2K

計
算
者

精
算
者



備
考

全体

点	①	②	③	④	⑤	⑥	③ × ⑤		② × ⑥	
	X	X-(定数)	X _{n-1} -X _{n+1}	Y	Y-(定数)	Y _{n-1} -Y _{n+1}	+	-	+	-
	-151	-151,800		-38	-38,700					
1	878.153	98.153	67.174	777.287	77.287	+ 2.460	5171.811286		16.150380	
5	961.980	161.980	66.287	780.571	80.571	+ 6.393	5340.971017		1035.346352	
6	964.442	164.442	17.858	783.682	83.682	+ 122.573	4474.373156		20.136.147264	
12	944.092	144.092	26.173	703.144	203.144	+ 123.775	45316.227712		17862.205700	
13	938.267	138.267	60.365	707.657	207.657	- 0.055	12535.211205		7.404775	
17	883.727	83.727	- 58.865	703.087	203.087	- 9.740	11.954233785		832.246380	
18	877.404	77.404	- 4.004	877.717	177.717	- 7.784	171.065717		618.080736	
K5	877.726	77.726	+ 3.367	875.305	175.305	- 27.240	576.652735		2171.736240	
K6	882.971	82.971	+ 15.233	870.477	170.477	- 23.441	2767.353141		1744.723211	
K7	875.757	75.757	+ 14.532	871.864	171.864	- 9.347	2077.527448		376.728773	
K8	877.503	77.503	+ 11.828	861.130	161.130	- 7.627	1705.845640		737.231417	
K9	907.787	107.787	+ 13.877	862.225	162.225	- 75.818	2231.176325		2786.078376	
K10	911.380	111.380	- 17.782	835.282	135.282	- 27.206	2676.148524		3252.964280	
K11	888.005	88.005	- 16.604	833.074	133.074	- 55.171	12208.647476		11855.323855	
22	874.776	74.776	+ 10.148	780.114	80.114	- 55.730	312.766428		5281.866480	
							3677.17.5757		1464.324422	
							23387.584133		700.451876	
							12=7756.4335745		15312.867153	

面積計算書

工
区

72

ブ
ロ
ック

24

計
算
者



特
許
者



備
考

街路

点	①	②	③	④	⑤	⑥	③ × ⑤	② × ⑥
	X	X - (定数)	X _{n-1} - X _{n+1}	Y	Y - (定数)	Y _{n-1} - Y _{n+1}	+	-
20	-151. 890.009	-151.880 10.009	+ 2.499	-38. 817.362	-38.800 17.362	- 15.591		43.387.638 156.050.719
20'	890.504	10.504	- 1.506	817.428	17.428	+ 15.705	26.246.568	164.965.520
36	888.503	8.503	- 2.499	833.067	33.067	+ 15.591	22.634.437	132.570.277
K.11	888.005	8.005	+ 1.506	833.019	33.019	- 15.705		49.726.614 125.718.525
							108.881.001	93.114.252 281.768.844 297.535.593
							15.766.749	15.766.749
							$\frac{1}{2} = 7.88$	

面積計算書

工
区

※2

ブ
ロ
ック

24

計
算
者



簡
算
者



備
考

1.772-10

2.777-1A

(1)

(2)

点	①	②	③	④	⑤	⑥	⑧ × ⑤		② × ⑥		
	X	X-(定数)	X _{n-1} -X _{n+1}	Y	Y-(定数)	Y _{n-1} -Y _{n+1}	+	-	+	-	
	-151	-151,870		-38	-38,770						
1	878.153	8.153	+ 18.385	777.287	7.287	- 2.051		133.77688K	16.72120.3		
2	913.132	23.132	+ 13.067	778.060	8.060	+ 14.984		103.320.020		346.607888	
23	911.220	21.220	- 19.668	772.273	22.273	+ 11.837	436.728784			251.223580	
21	873.524	3.524	- 16.444	787.877	17.877	- 12.162	327.217156			42.858888	
22	874.776	4.776	+ 4.627	780.111	10.111	- 12.610		46.803817	60.225360		
								763.948140	285.720723	119.805051	577.833468
								472.02747			472.02747
											1/2 = 237.0137085
2	-151	-151,700		-38	-38,770						
2	913.132	13.132	+ 26.505	778.060	8.060	- 10.578		213.630.300	332.870275		
3	934.035	34.035	+ 15.053	779.135	9.135	+ 14.424		137.507135		1511.970840	
26	928.185	28.185	- 26.505	822.484	52.484	+ 10.578	1391.088120			142.670730	
24	907.530	7.530	- 15.053	817.713	17.713	- 14.424	742.327787		334.512720		
								2137.418207	351.137455	867.383016	2655.661770
								1782.278784			1782.278784
											1/2 = 874.127377

面積計算書

工区 北 ブロック 24 計算者  縮尺者  備考 3.760-2
4.保留地北24-1号

点	①	②	③	④	⑤	⑥	③ × ⑤	② × ⑥
	X	X-(定数)	X _{n-1} -X _{n+1}	Y	Y-(定数)	Y _{n-1} -Y _{n+1}	+ -	+ -
(3) 3	-151 934.135	-151.730 4.025	+ 17.182	-38 779.135	-38.770 9.135	9.943	175.227370	40.120005
4	951.752	21.752	+ 16.046	780.046	10.046	+ 13.210	161.178116	287.343920
27	950.081	20.081	- 17.182	772.345	22.345	+ 9.943	122.621770	199.665383
28	932.370	2.370	- 16.046	787.787	19.787	- 13.210	320.743474	33.949700
							747.365284	326.425686
							412.939598	412.939598
								$\frac{1}{2} = 206.469799$
(4) 4	-151 951.752	-151.750 1.752	+ 11.867	-38 780.046	-38.780 0.046	- 11.774	0.545974	20.628048
5	961.750	11.750	+ 12.670	780.571	0.571	+ 3.636	7.245990	43.450200
6	964.442	14.442	+ 0.728	783.680	3.680	+ 13.468	2.680496	194.504856
7	962.678	12.678	- 14.361	774.037	14.037	+ 8.663	201.614079	109.829514
27	950.081	0.081	- 10.926	772.345	12.345	- 13.973	134.881470	7.723423
							336.495549	10.472460
							326.023089	21.761481
								347.784570
								326.023089
								$\frac{1}{2} = 163.0115445$

面積計算書

工区

北

ブロック

北

計算者

計算者

備考

3.778

6.775-1

点	①	②	③	④	⑤	⑥	③	×	⑤	②	×	⑥
	X	X-(定数)	X _{n-1} -X _{n+1}	Y	Y-(定数)	Y _{n-1} -Y _{n+1}	+		-	+		-
(6)	-151	-151,750		-38	-38,780							
7	962.678	32.678	+ 22.086	794.037	14.037	+ 15.917			394,299,354			520,201,082
8	960.656	30.656	- 31.718	805.908	25.908	+ 7.877	821,749,944					241,538,624
27	930.960	0.960	- 22.086	807.918	21.918	- 15.917	615,588,948			15,282,240		
28	932.570	2.570	+ 31.718	797.87	7.877	- 7.877			316,831,102	20,249,030		
							1437,338,892		711,130,456	35,531,270		761,739,706
							726,208,436					726,208,436
									$\frac{1}{2} = 363,104,218$			
(6)	-151	-151,720		-38	-38,800							
8	960.656	40.656	+ 26.210	805.908	5.908	+ 24.434			154,848,680			994,201,824
9	957.170	37.170	- 32.471	826.372	26.372	+ 16.576	856,325,212					616,129,920
26	928.185	8.185	- 26.210	822.484	22.484	- 24.434	589,305,640			200,155,990		
27	930.960	10.960	+ 32.471	801.918	1.918	- 16.576			62,279,378	181,672,960		
							1445,630,852		217,128,058	381,828,950		1610,331,744
							1228,502,794					1228,502,794
									$\frac{1}{2} = 614,251,397$			

面積計算書

工区

* 2

ブロック

24

計算者

結

精算者

守

備考

(7). 780-1A

点	①	②	③	④	⑤	⑥	③ × ⑤	② × ⑥
	X	X-(定数)	X _{n-1} -X _{n+1}	Y	Y-(定数)	Y _{n-1} -Y _{n+1}	+	-
	-151,	-151,910		-39,	-39,920			
9	957.170	47.170	+ 30.517	826.372	6.372	+ 45.416	194.454.324	2142.272720
10	950.288	40.288	- 42.966	866.771	46.771	+ 36.539	2009.562786	1472.083232
30	944.204	4.204	- 30.517	862.911	42.911	- 45.416	1309.514987	190.928864
25	919.771	9.771	+ 42.966	821.355	1.355	- 36.539	58.218930	357.022569
							3319.077773	252.673254
							547.951433	3614.355952
							3066.4104519	3066.4104519
							Σ = 1533.20	

面積計算書

工区

#2

ブロック

24

計算者



精算者



備考

12. 保留地 24-2号
13. 799-1

点	①	②	③	④	⑤	⑥	③ × ⑤		② × ⑥	
	X	X-(定数)	X _{n-1} -X _{n+1}	Y	Y-(定数)	Y _{n-1} -Y _{n+1}	+	-	+	-
	-151	-151.800		-58	-58.800					
12) 19	879.628	79.628	+ 12.219	896.035	96.035	+ 0.341		1173.451665		27.153148
25	891.623	91.623	+ 11.066	898.059	98.058	+ 7.638		1085.109828		699.816474
16	890.694	90.694	- 7.896	903.673	103.673	+ 5.031		818.602003		456.281514
17	883.727	83.727	- 11.290	903.089	103.089	- 5.956		1163.874810		498.678012
18	879.404	79.404	- 4.099	897.717	97.717	- 7.054		400.541983		560.115816
								2383.018801	7258.561493	1058.793828
								124.457308		124.457308
								$\frac{1}{2} = 62.22$		
	-151	-151.800		-58	-58.800					
13) K.6	872.477	82.477	+ 16.233	870.477	70.477	- 23.441		1144.053141		1946.923211
K.7	895.959	95.959	+ 8.652	871.864	71.864	+ 27.592		621.767328		2646.741138
35	891.623	91.623	- 16.331	898.059	98.059	+ 24.171		1601.401529		2214.619539
19	879.628	79.628	- 11.897	896.035	96.035	- 2.754		1142.528395		2192.95512
K.5	879.726	79.726	+ 3.343	895.305	95.305	- 25.558		318.604615		2037.637108
								2743.929924	2084.425084	4201.855831
								659.504940		4861.360671
								$\frac{1}{2} = 329.75$		659.504940

面積計算書

工区

#2

ブロック

24

計算者



精算者



備考

14. 773-5

15. 772-1

(14)

(15)

点	①	②	③	④	⑤	⑥	③ × ⑤		② × ⑥	
	X	X-(定数)	X _{n-1} -X _{n+1}	Y	Y-(定数)	Y _{n-1} -Y _{n+1}	+	-	+	-
20'	-151 890.504	-151.800 90.504	+ 31.268	-58 817.428	-39.800 17.428	- 11.712			544.938704	1059.982848
25'	919.771	119.771	+ 23.700	821.355	21.355	+ 45.483		506.113500		5447.544392
30'	914.204	114.204	- 11.984	862.911	62.911	+ 40.870	753.925424			4667.517480
K.9	907.787	107.787	- 2.824	862.225	62.225	- 27.629	175.723400			2978.047023
K.10	911.380	111.380	- 19.284	835.282	55.282	- 29.158	680.378088			3247.618040
36'	888.503	88.503	- 20.876	833.067	53.067	- 17.854	690.306692			1580.132562
							2300.333604	1051.052204	8865.780472	10115.061872
							1249.281400			1249.281400
								1/2 624.640		
20'	-151 890.009	-151.840 0.009	- 14.006	-38 817.362	-38.780 37.362	- 29.814	523.292172			0.268326
21'	893.524	3.524	+ 21.211	789.899	9.899	- 25.089		209.967689	88.413636	
23'	911.220	21.220	+ 14.006	792.273	12.273	+ 29.814		171.895638		632.653080
24'	907.530	17.530	- 21.211	819.713	39.713	+ 25.089	947.352443			439.810170
							1365.644615	381.863327	88.681962	1072.463250
							983.781288			983.781288
								1/2 491.89		

** サハヨウ メンセキ ケイサン ショウ **

タイ 2 コウ 24 ヲ ムツク (8) 797- 1A ムツト

テ ン メ イ	X	Y	Y * (XN-1)	X * (YN-1)
31	- 151,919.327	- 38,863.459		
10	- 151,950.288	- 38,866.771	+ 5,904,613,692.983117	+ 5,905,313,787.726192
11	- 151,946.719	- 38,887.724	+ 5,909,000,861.464512	+ 5,905,678,331.574349
33	- 151,917.552	- 38,884.603	+ 5,908,387,845.467557	+ 5,907,727,832.931648
31	- 151,919.327	- 38,863.459	+ 5,904,041,553.532368	+ 5,907,322,718.422181
			+ 23,626,043,953.447554	+ 23,626,042,670.654370
		±)	23,626,043,953.447554	23,626,042,670.654370
			1,282.7931	
		A=	641.39	

** サハヨウ メンセキ ケイサン ショウ **

タイ 2 コウ 24 ヲ ムツク (9) 796- 1 ムツト

テ ン メ イ	X	Y	Y * (XN-1)	X * (YN-1)
33	- 151,917.552	- 38,884.603		
11	- 151,946.719	- 38,887.724	+ 5,907,727,832.931648	+ 5,908,387,845.467557
12	- 151,944.092	- 38,903.144	+ 5,911,205,089.584536	+ 5,908,759,913.126608
13	- 151,938.269	- 38,907.657	+ 5,911,788,614.712444	+ 5,910,876,358.017736
14	- 151,915.774	- 38,905.773	+ 5,911,275,803.726937	+ 5,910,686,827.681518
33	- 151,917.552	- 38,884.603	+ 5,907,184,561.427722	+ 5,910,469,792.827696
			+ 29,549,181,902.383287	+ 29,549,180,737.121115
		±)	29,549,181,902.383287	29,549,180,737.121115
			1,165.2621	
		A=	582.63	

** サハヨウ メンセキ ケイサン ショウ **

タイ 2 コウ 24 ヲ ムツク (10) 798- 4 ムツト

テ ン メ イ	X	Y	Y * (XN-1)	X * (YN-1)
14	- 151,915.774	- 38,905.773		
15	- 151,906.406	- 38,904.988	+ 5,910,281,364.480712	+ 5,910,036,149.081838
34	- 151,909.139	- 38,872.438	+ 5,904,972,349.037828	+ 5,910,023,229.885332
32	- 151,918.507	- 38,873.222	+ 5,905,197,684.175858	+ 5,905,442,744.410066
14	- 151,915.774	- 38,905.773	+ 5,910,506,947.840911	+ 5,905,455,608.003828
			+ 23,630,958,345.535309	+ 23,630,957,731.381064
		±)	23,630,958,345.535309	23,630,957,731.381064
			614.1542	
		A=	307.07	

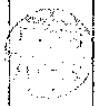
** サハヨウ メンセキ ケイサン ショウ **

タイ 2 コウ 24 ヲ ムツク (11) 798- 1 ムツト

テ ン メ イ	X	Y	Y * (XN-1)	X * (YN-1)
15	- 151,906.406	- 38,904.988		
16	- 151,890.694	- 38,903.673	+ 5,909,717,145.629238	+ 5,909,305,627.381672
K 7	- 151,895.959	- 38,871.864	+ 5,904,274,400.033616	+ 5,909,310,718.957407
K 8	- 151,897.503	- 38,861.130	+ 5,902,848,609.173670	+ 5,904,539,078.555592
K 9	- 151,907.787	- 38,862.225	+ 5,903,074,938.524175	+ 5,903,308,258.619310
31	- 151,919.327	- 38,863.459	+ 5,903,662,051.855233	+ 5,903,923,067.722575
32	- 151,918.507	- 38,873.222	+ 5,905,593,724.561594	+ 5,904,078,668.135713
34	- 151,909.139	- 38,872.438	+ 5,905,442,744.410066	+ 5,905,197,684.175858
15	- 151,906.406	- 38,904.988	+ 5,910,023,229.885332	+ 5,904,972,349.037828
			+ 47,244,636,844.072924	+ 47,244,635,452.585955
		±)	47,244,636,844.072924	47,244,635,452.585955
			1,391.4869	
		A=	695.74	

計年月日

計算者



檢査者



B.NO. 24

各筆面積計算書

地番	算式	隅切	地積	摘要
1	772-10-		239.01	
2	777-1A-		894.13	
3	760-2-		206.46	
4	保留地第24-1号-		163.01	
5	778-		363.10	
6	775-1-		614.25	
7	780-1A-		1,533.20	
8	797-1A-		641.39	
9	796-1-		582.63	
10	798-4-		307.07	
11	798-1-		695.76	
12	保留地第24-2号		62.22	
13	799-1-		329.75	
14	773-5-		624.66	
15	772-1-		491.89	
			7,748.49	
	街路	7.88		
		7.88		
		合計	7,756.37	
		全体	7,756.43	
			差 - 0.06	

		41.927	
	30	30-1	25
		15.507.	26.4201
		270-1	270-1
	31		
	26.290	26.784.	27.754
	10	10-1	9
		14.218.	26.768.
		4.981	

面積計算書

工区 $\gamma = \text{地正}$
 号 24
 計算者
 精算者
 備考

点	①	②	③	④	⑤	⑥	⑦	⑧	⑨	⑩
	X	X - (定数)	$X_{n-1} - X_{n+1}$	Y	Y - (定数)	$Y_{n-1} - Y_{n+1}$	+	-	+	-
		-151.910			-38.840					
20	-151.914.204	4.204	-34.025	-38.862.911	22.911	-19.230	779.846775		80.842920	
20-1	-151.916.263	6.263	+38.471	-38.847.541	7.541	-10.151		290.109811	63.575713	
10-1	-151.952.675	42.675	+34.025	-38.852.760	12.760	+19.230		434.159000		820.640250
10	-151.950.288	40.288	-38.471	-38.866.771	26.771	+10.151	1029.907141			408.963488
							1809.453916	724.268811	144.418633	1229.603738
							1085.125105			1085.125105
									$\frac{1}{2} = 542.592555$	
		-151.910			-38.820					
20-1	-151.916.263	6.263	-32.904	-38.847.541	27.541	-31.405	906.209064		196.689515	
25	-151.919.771	9.771	+40.907	-38.827.255	1.255	-21.169		55.428985	206.842299	
9	-151.957.170	47.170	+32.904	-38.826.372	6.372	+31.405	209.664288			1421.373250
10-1	-151.952.675	42.675	-40.907	-38.852.760	22.760	+21.169	1340.113320			903.387075
							2246.322384	265.093273	403.531814	2384.760925
							1981.229111			1981.229111
									$\frac{1}{2} = 990.614555$	