

**BLOCK NO. 20-2**

画地略図

工区

第2

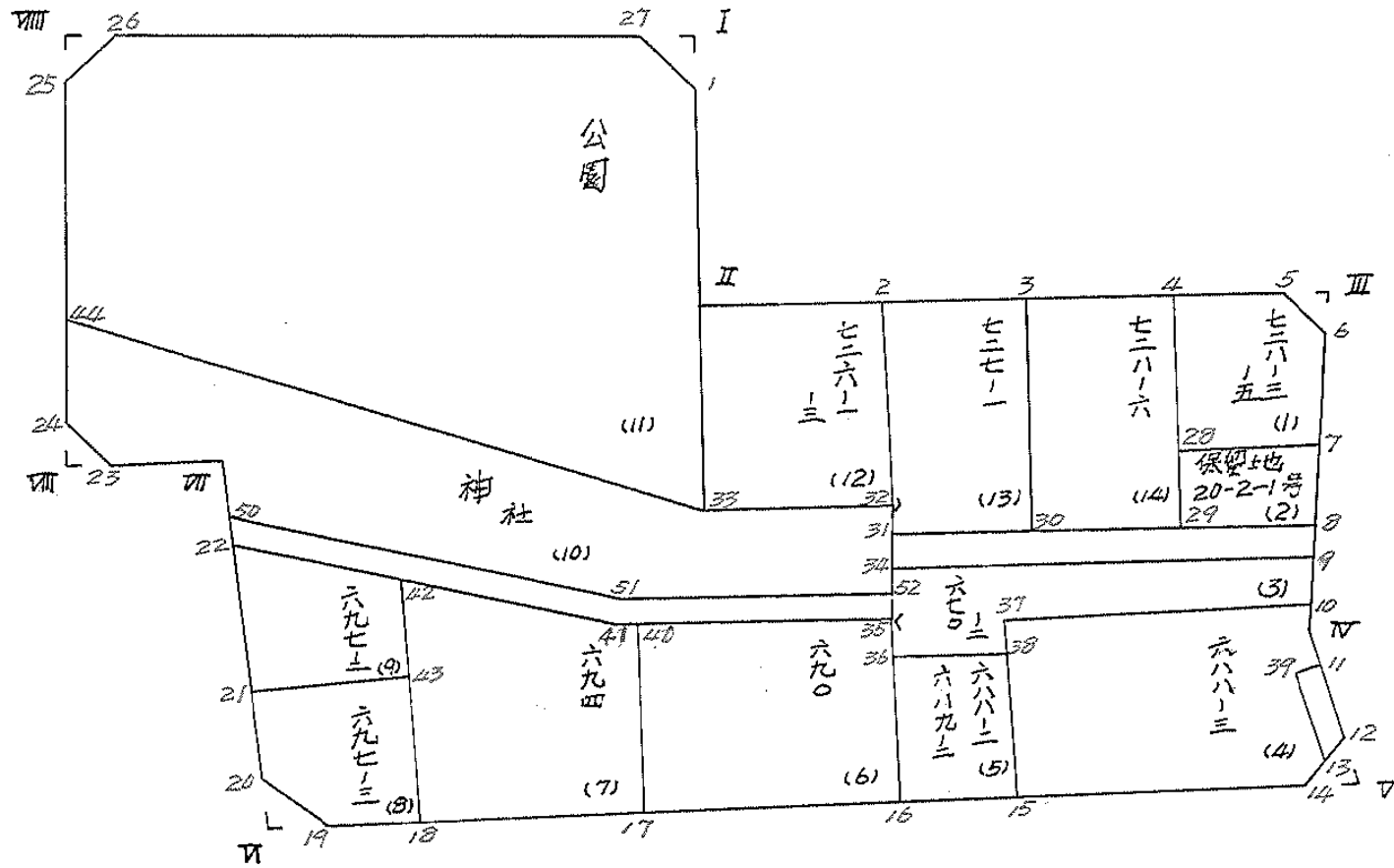
ブロック

20-2

記入者



点検者



# 面積計算書

工区

ア=地区

ブロック

20-2

計算者



精算者



備考

全体

点	①	②	③	④	⑤	⑥	③ ×	⑤	② ×	⑥	
	X	X-(定数)	X <sub>n-1</sub> -X <sub>n+1</sub>	Y	Y-(定数)	Y <sub>n-1</sub> -Y <sub>n+1</sub>					+
I	-152,262.003	-152,200 - 62.003	+ 42.048	-38,705.080	-38,600 - 105.080	- 0.181					
II	301.606	101.606	+ 41.687	706.763	106.763	- 61.418					
5	303.690	103.690	+ 4.148	643.662	43.662	- 65.022					
6	305.754	105.754	+ 33.461	641.741	41.741	- 0.694					
IV	337.151	137.151	+ 41.776	642.968	42.968	+ 0.244				33.464844	
12	347.530	147.530	+ 13.850	641.985	41.985	+ 1.694				249,915820	
14	351.001	151.001	+ 24.123	644.662	44.662	+ 128.651				19426.429651	
19	371.653	171.653	+ 18.999	770.636	170.636	+ 128.250				22014.497250	
20	370.000	170.000	- 48.307	772.912	172.912	+ 9.398	8352.859984			1597.660000	
VII	323.346	123.346	- 48.198	780.034	180.034	+ 18.739	8677.278732			2311.380694	
23	321.802	121.802	- 3.804	791.651	191.651	+ 13.489	729,040,404			1642.987178	
24	319.542	119.542	- 78.101	793.523	193.523	- 2.307	15114.339823			275.783394	
25	243.701	43.701	- 78.166	789.344	189.344	- 7.268	14800.263104			317.618868	
26	241.376	41.376	+ 15.857	786.255	186.255	- 82.400	2953.445535	3409.382400			
27	259.558	59.558	+ 20.627	706.944	106.944	- 81.175	2205.933888	4834.620650			
							47673.782047	22302.036229	21904.589619	47276.335437	
							25371.745818			25371.745818	

1/2 = 12685.872909 三和測量建設株式会社

# 画地計算

# 面積計算書

工  
区

※2

ブ  
ロ  
ック

20-2

計  
算  
者



精  
算  
者



備  
考

(1). 728-3, 728-5  
(2) 保留地第 20-2-1号

点	①	②	③	④	⑤	⑥	③	×	⑤	②	×	⑥
	X	X-(定数)	X <sub>n-1</sub> -X <sub>n+1</sub>	Y	Y-(定数)	Y <sub>n-1</sub> -Y <sub>n+1</sub>	+	-	+	-		
1)	-152,	-152.300-		-38,	-38.640-							
4	303.271-	3.271-	- 14.889-	656.339-	16.339-	- 13.801-	243.271371-			45.143 071-		
5	303.690-	3.690-	+ 2.483-	643.662-	3.662-	- 14.498-		9.092746-		53.866 620-		
6	305.754-	5.754-	+ 15.474-	641.741-	1.741-	- 1.397-		26.940 234-		8.038 338-		
7	319.164-	19.164-	+ 12.825-	642.265-	2.265-	+ 15.722-		29.048.625-				321.296 428-
28.	318.579-	18.579-	- 15.893-	657.463-	17.463-	+ 14.074-	217.539 459-					261.480 846-
.							520.810.830-	65.081 605-	107.048 029-			562.777 254-
.							455.729 225-					455.729 225-
.								1/2 = 227.86-		分筆後の座標なし		
2)	-152,	-152.300-		-38,	-38.640.00-							
7	319.164-	19.164-	+ 4.668-	642.265-	2.265-	- 15.038-		19.573.020-		288.188 232-		
8	323.247-	23.247-	+ 11.994-	642.425-	2.425-	+ 15.608,		12.110 450-				362 839 176-
29	324.158-	24.158-	- 4.668-	657.873-	17.873-	+ 15.038-	83.431 164-					353 288 004-
28.	318.579-	18.579-	- 4.994-	657.463-	17.463-	- 15.608-	87.219 222-			289.981 072-		
.							170.641 386-	22.683 470-	578.169 264-			726.129 180-
.							147.957 916-					147.957 916-
.								1/2 = 73.97-				

# 面積計算書

工  
区

※二

ブ  
ロ  
ック

20-2

計  
算  
者



精  
算  
者



備  
考

(3) 670-2

点	①	②	③	④	⑤	⑥	③ × ⑤		② × ⑥	
	X -152.1	X-(定数) -152.320	X <sub>n-1</sub> -X <sub>n+1</sub>	Y -38.1	Y-(定数) -38.640	Y <sub>n-1</sub> -Y <sub>n+1</sub>	+	-	+	-
9	325.256 =	5.256 =	+ 6.202 =	642.503 =	2.503 =	- 44.072 =		15.523.606 =	231.642.432 =	
10	334.078 =	14.078 =	+ 9.307 =	642.848 =	2.848 =	+ 31.763 =		26.506.336 =		447.159.514 =
37	334.563 =	14.563 =	+ 4.360 =	674.266 =	34.266 =	+ 30.783 =		148.399.760 =		448.292.829 =
38	338.438 =	18.438 =	+ 4.013 =	673.631 =	33.631 =	+ 11.588 =		134.961.203 =		213.659.544 =
36	338.576 =	18.576 =	- 7.079 =	685.854 =	45.854 =	+ 13.391 =	324.600.466 =			248.751.216 =
35	331.359 =	11.359 =	- 10.700 =	687.022 =	47.022 =	+ 1.066 =	503.135.400 =			12,108.694 =
34	327.876 =	7.876 =	- 6.103 =	686.920 =	46.920 =	- 44.519 =	286,352.760 =		350.631.644 =	
							1114.088.626 =	326,390.905 =	582.274.076 =	1369.971.797 =
							787.697.721 =			787.697.721 =
									1/2 = 393.84.88605 =	

# 面積計算書

工区

※ =

ブロック

20-2

計算者



精算者



備考

(4) 688-3

(5) 688-2, 689-2

点	①	②	③	④	⑤	⑥	③ × ⑤	② × ⑥
	X	X - (定数)	X <sub>n-1</sub> - X <sub>n+1</sub>	Y	Y - (定数)	Y <sub>n-1</sub> - Y <sub>n+1</sub>	+	-
	-152	-152,350		-38,	-38,640			
10	334.078	4.078 +	2.588 =	642.848	2.848 -	31.278 =	7.370624 =	127.633240 =
10	337.151	7.151 +	6.119 =	642.968	2.968 -	0.169 =	12.161192 =	1.209519 =
11	340.197	10.197 +	3.140 =	642.679	2.679 +	0.707 =	2.412060 =	7.209279 =
39	340.291	10.291 +	2.673 =	643.675	3.675 +	0.201 =	31.211775 =	2.062491 =
13	348.690	18.690 +	10.710 =	642.880	2.880 +	0.987 =	30.844800 =	18.447020 =
14	351.001	21.001 +	4.607 =	644.662	4.662 +	27.987 =	30.801834 =	527.756927 =
15	355.297	25.297 -	16.438 =	670.867	30.867 +	27.604 =	507.391746 =	742.272328 =
37	334.563	4.563 -	21.217 =	670.266	30.266 -	28.017 =	27.070256 =	127.850677 =
							1230.482000 =	126.802285 =
							256.672467 =	364.372175 =
							1107.677715 =	1107.677715 =
	-152	-152,350		-38,	-38,670		1/2 =	553.2372575 =
15	355.297	25.297 +	18.820 =	670.867	0.867 +	9.198 =	16.316740 =	232.631806 =
16	357.258	27.258 -	16.721 =	682.829	12.829 +	14.987 =	214.513707 =	408.315606 =
36	338.576	2.576 -	18.820 =	685.854	15.854 -	9.198 =	272.372280 =	72.222012 =
38	338.438	2.438 +	16.721 =	673.131	3.631 -	14.987 =	60.713951 =	126.460306 =
							512.285727 =	77.030271 =
							205.342254 =	66.177452 =
							1/2 =	217.927547 =
							435.255072 =	435.255072 =

# 面積計算書

工区

\*二

ブロック

20-2

計算者

精算者

備考

(6) 690  
(7) 694

点	①	②	③	④	⑤	⑥	③ × ⑤	② × ⑥
	X	X-(定数)	X <sub>n-1</sub> -X <sub>n+1</sub>	Y	Y-(定数)	Y <sub>n-1</sub> -Y <sub>n+1</sub>	+	-
	<del>-152</del>	<del>-152.300</del>		<del>38</del>	<del>-38.600</del>			
6) 16	357.258 =	57.258 = +	30.027 =	682.829 =	82.829 = +	20.988 =	2487.106383 =	201.730704 =
17	361.386 =	61.386 = -	25.287 =	708.010 =	108.010 = +	29.948 =	2731.464890 =	1838.387728 =
40	331.969 =	31.969 = -	30.027 =	712.777 =	112.777 = -	20.988 =	3386.334977 =	670.965372 =
35	331.359 =	31.359 = +	25.287 =	687.022 =	87.022 = -	29.948 =	2200.679358 =	939.137332 =
							611.7819257 =	4687.205741 =
							1430.014128 =	1430.014128 =
								1/2 = 715.007064 =
	<del>-152</del>	<del>-152.300</del>		<del>38</del>	<del>-38.700</del>			
7) 17	361.386 =	61.386 = +	36.837 =	708.010 =	8.010 = +	40.505 =	275.080370 =	2486.437930 =
18	368.808 =	68.808 = -	32.690 =	753.282 =	53.282 = +	51.822 =	1741.788580 =	3565.768176 =
42	328.696 =	28.696 = -	36.773 =	759.832 =	59.832 = -	37.701 =	2200.202136 =	1081.867876 =
41	332.035 =	32.035 = +	3.273 =	715.581 =	15.581 = -	47.055 =	30.776613 =	1507.406925 =
40	331.969 =	31.969 = +	29.351 =	712.777 =	12.777 = -	7.571 =	375.017727 =	262.037297 =
							370.970716 =	721.074730 =
							3220.875986 =	3220.875986 =
								1/2 = 1610.437993 =



# 面積計算書

工区

\* =

ブロック

20-2

計算者



精算者



備考

(8) 697-3  
(9) 697-2

9)

9)

点	①	②	③	④	⑤	⑥	③ × ⑤	② × ⑥
	X	X-(定数)	X <sub>n-1</sub> -X <sub>n+1</sub>	Y	Y-(定数)	Y <sub>n-1</sub> -Y <sub>n+1</sub>	+	-
	-152,	-152.340		-38,	-38.750			
18	368.808 =	28.808 =	+ 30.572 =	753.282 =	3.282 =	+ 12.826 =		100.337.304 =
19	371.653 =	31.653 =	+ 1.192 =	770.636 =	20.636 =	+ 19.630 =		24.598.112 =
20	370.000 =	30.000 =	- 27.641 =	772.912 =	22.912 =	+ 6.243 =	633.310.592 =	
21	344.012 =	4.012 =	- 28.919 =	776.879 =	26.879 =	- 15.102 =	777.313.801 =	60.589.224 =
43	341.081 =	1.081 =	+ 24.796 =	757.810 =	7.810 =	- 23.597 =		193.656.760 =
								25.508.357 =
							1410.624.393 =	318.592.176 =
								86.097.581 =
								1178.129.798 =
							1092.032.217 =	
								1092.032.217 =
								$\frac{1}{2} = 546.016.1085 =$
	-152,	-152.320 =		-38	-38.750			
21	344.012 =	24.012 =	- 13.865 =	776.879 =	26.879 =	+ 21.633 =	372.677.335 =	
22	327.216 =	7.216 =	- 15.316 =	779.443 =	29.443 =	- 17.047 =	450.948.988 =	123.011.152 =
42	328.696 =	8.696 =	+ 13.865 =	759.832 =	9.832 =	- 21.633 =		136.320.680 =
43	341.081 =	21.081 =	+ 15.316 =	757.810 =	7.810 =	+ 17.047 =		188.120.568 =
								119.617.960 =
								359.367.807 =
							823.626.323 =	255.938.640 =
								311.131.720 =
								878.819.403 =
							567.687.683 =	
								567.687.683 =
								$\frac{1}{2} = 283.84.384.15 =$

# 面積計算書

工区

★ニ.

ブロック

20-2

計算者



精算者



備考

(10) 神社

10)

点	①	②	③	④	⑤	⑥	③ × ⑤		② × ⑥	
	X	X-(定数)	X <sub>n-1</sub> -X <sub>n+1</sub>	Y	Y-(定数)	Y <sub>n-1</sub> -Y <sub>n+1</sub>	+	-	+	-
	-152,	-152,300		-38,	-38,680					
44	309.058	9.058	+ 2.739	792.945	112.945	- 85.881		309.356355	777.910098	
37	322.281	22.281	+ 14.798	707.642	27.642	- 106.142		409.046316	2364.949902	
32	323.856	23.856	+ 7.676	686.803	6.803	- 20.661		522.19828	492.888816	
52	329.957	29.957	+ 6.777	686.981	6.981	+ 28.742		427.310237		861.024094
51	330.633	30.633	- 4.161	715.545	35.545	+ 92.679	147.902745			2839.035807
50	325.796	25.796	- 7.287	779.660	99.660	+ 64.489	726.222420			1663.558244
VII	323.346	23.346	- 3.994	780.034	100.034	+ 11.991	399.535796			279.941886
23	321.802	21.802	- 3.804	791.651	111.651	+ 13.489	424.720404			294.087178
24	319.542	19.542	- 12.744	793.523	113.523	+ 1.294	1446.737112			25.287348
							3145.118477	817.932736	3135.748816	5962.934557
							2327.185741			2327.185741
										$V_2 = 1163.5928705$

# 面積計算書

工区

第2

ブロック

20-2

計算者



精算者



備考

(11)

公園

点	①	②	③	④	⑤	⑥	⑦ × ⑧		⑨ × ⑩	
	X	X-(定数)	X <sub>n-1</sub> -X <sub>n+1</sub>	Y	Y-(定数)	Y <sub>n-1</sub> -Y <sub>n+1</sub>	+	-	+	-
44	-152. 309.058-	-152.240- 69.058-	-78.580-	-381 792.945-	-38.700= 92.945-	1 81.702-	7303.618100			5642.176716-
25	243.701-	3.701-	-67.682-	789.344-	89.344-	-6.690-	6046.986688-			24.759690-
26	241.376-	1.376-	+15.857-	786.255-	86.255-	-82.400-		1367.705535-		113.382400-
27	259.558-	19.558-	+20.627-	706.944-	6.944-	-81.175-		143.233880-		1587.620650-
1	262.003-	22.003-	+62.723-	705.080-	5.080-	+0.698-		318.632840-		15.358094-
33	322.281-	82.281-	+47.055-	707.642-	7.642-	+87.865-		359.594310-		7229.620065-
							13350.598908	2189.206573	1725.762740	12887.154875-
							11161.392135-			11161.392135-
										1/2 5580.69-

# 面積計算書

工  
区

棟  
#2

ブ  
ロ  
ック

20-2

計  
算  
者

前  
算  
者

備  
考

726-3  
421. 726-1, 431 727-1

点	①	②	③	④	⑤	⑥	③ ×	⑤	② ×	⑥
	X	X-(定数)	X <sub>n-1</sub> -X <sub>n+1</sub>	Y	Y-(定数)	Y <sub>n-1</sub> -Y <sub>n+1</sub>	+	-	+	-
2)	-152, 301.606	-152,300 1.606	- 19.984	-38, 706.763	-38,680 26.763	- 21.688	534.83792		34.830928	
2	302.293	2.297	+ 22.251	685.954	5.954	- 19.960		132.482454	45.848120	
32	323.856	23.857	+ 19.984	686.803	6.803	+ 21.688		135.951152		517.410616
33	322.281	22.281	- 22.251	707.642	27.642	+ 19.960	615.062142			444.728760
.							1149.893924	268.433606	80.679048	962.139376
.							881.460328			881.460328
.								1/2 = 440.730164		
3)	-152, 302.293	-152,300 2.293	- 21.032	-38, 685.954	-38,660 25.954	- 16.920	545.864528		38.797560	
3	302.824	2.824	+ 22.609	669.883	9.883	- 15.463		223.444747	43.667512	
30	324.902	24.902	+ 23.043	670.491	10.491	+ 16.979		241.744113		422.811058
31	325.867	25.867	- 11.046	686.862	26.862	+ 16.312	28.097652			421.942504
32	323.856	23.856	- 23.574	686.803	26.803	- 0.908	631.853922		21.661248	
.							1205.816102	465.188860	104.126320	844.753562
.							740.627242			740.627242
.								1/2 = 370.313621		

# 面積計算書

工区

第ニ

ブロック

20-2

計測者



計算者



備考

(U) 728-6  
水路が4号線

14)

点	①	②	③	④	⑤	⑥	③ × ⑤		② × ⑥	
	X	X-(定数)	X <sub>n-1</sub> -X <sub>n+1</sub>	Y	Y-(定数)	Y <sub>n-1</sub> -Y <sub>n+1</sub>	+	-	+	-
	<del>-152,</del>	<del>-152,300</del>		<del>-38,</del>	<del>-38,650</del>					
3	302.824	2.824	- 21.631	667.883	19.883	14.152	430.089172		39.965248	
4	303.271	3.271	+ 21.334	656.339	6.339	- 12.010		135.236226	39.284710	
29	324.158	24.158	+ 21.631	657.873	7.873	+ 14.152	170.300963		341.884016	
30	324.902	24.902	- 21.334	670.491	20.491	+ 12.010	427.154494		299.073020	
							867.244167	305.537009	79.249958	640.957036
							561.707078		561.707078	
							1/2 = 280.853			
	<del>-152,</del>	<del>-152,340</del>		<del>-38,</del>	<del>-38,640</del>					
11	340.197	0.197	+ 7.239	642.679	2.679	- 1.690	19.393281		0.332930	
12	347.530	7.530	+ 8.493	641.985	1.985	+ 0.201	16.858605		1.513530	
13	348.690	8.690	- 7.239	642.880	2.880	+ 1.690	20.848325		14.686100	
39	340.291	0.291	- 8.493	643.675	3.675	- 0.201	31.211775		0.058491	
							52.060095	36.251886	0.391421	16.199630
							15.808209		15.806519	
							1/2 = 7.904			

# 面積計算書

工  
区

第2

ブ  
ロ  
ック

20-2

計  
算  
者



精  
算  
者



備  
考

通路才3号線  
水路才23号線

点	①	②	③	④	⑤	⑥	③	×	⑤	②	×	⑥	
	X	X-(定数)	X <sub>n-1</sub> -X <sub>n+1</sub>	Y	Y-(定数)	Y <sub>n-1</sub> -Y <sub>n+1</sub>	+	-	+	-			
	-152	-152.320		-39	-39.640								
8	323.247	3.247	- 0.611	642.425	2.425	- 44.359	14.81675			144.033673			
9	325.256	5.256	+ 4.629	642.503	2.503	+ 44.495		11.586387			233.865720		
34	327.876	7.876	+ 0.611	686.920	46.920	+ 44.359		28.668120			349.371484		
31	325.867	5.867	- 4.629	686.862	46.862	- 44.495	216.944198			261.052165			
								218.405873	40.254507	405.085858	583.237204		
								179.151366			179.151366		
										$\frac{1}{2} = 89.075$			
52	329.957	9.957	+ 0.726	686.981	6.981	- 28.523		5.068206		284.003511			
35	331.359	11.359	+ 2.078	687.022	7.022	+ 28.600		14.591716			324.867400		
41	332.035	12.035	- 4.143	715.581	35.581	+ 92.421	147.412083				112.296735		
22	327.216	7.216	- 6.239	779.443	99.443	+ 64.079	620.424877				462.394064		
50	325.796	5.796	+ 3.417	779.660	99.660	- 63.898		340.538220	370.352808				
51	330.633	10.633	+ 4.161	715.545	35.545	- 92.679		147.902745	995.455807				
										767.836960	508.100887	1639.812126	1899.648199
										259.736073		259.736073	
										$\frac{1}{2} = 129.868$			

計年  
月  
算日

計  
算  
者



檢  
查  
者



B.NO. 20-2

各筆面積計算書

地番	算式	隅切	地積	摘要
1	728-3, 728-5		227.86	
2	保留地第 20-2-1号		73.97	
3	670-2		393.84	
4	688-3		553.83	
5	688-2, 689-2		217.92	
6	690		715.00	
7	694		1610.44	
8	697-3		546.01	
9	697-2		283.84	
10	神社		1163.59	
11	公園		5580.69	
12	726-1, 726-3		440.73	
13	727-1		370.31	
14	728-6		280.85	
			12458.88	
	通路第3号線	89.07		
	水路第4号線	7.90		
	“ 第23号線	129.86		
		226.83		
		合計	12685.71	
		全体	12685.87	
		差	-0.16	