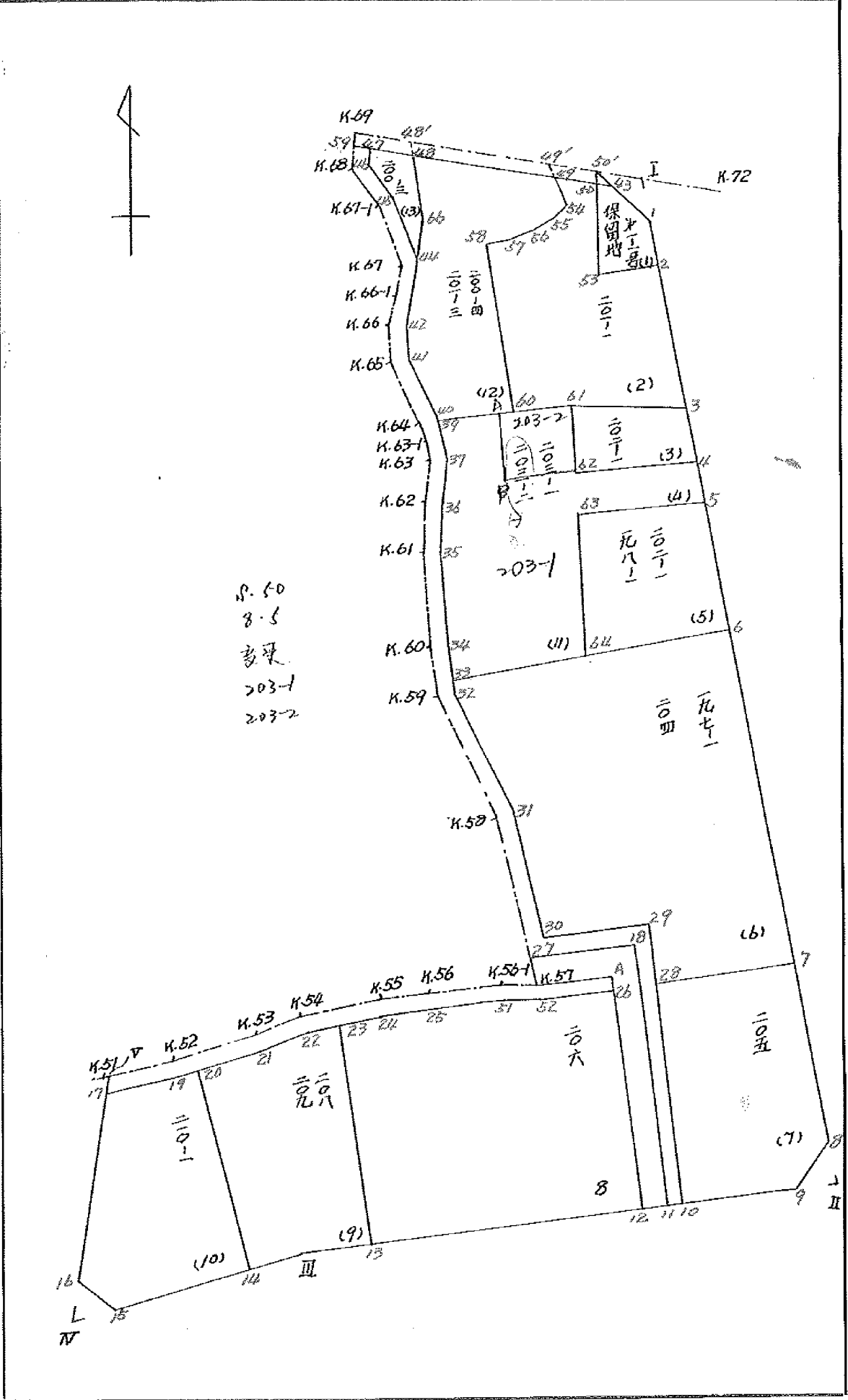


BLOCK NO. 1

画面略図
 工区
 第2
 ブロック
 /
 記入者
 点検者



面積計算書

工区

第2

ブロック

1

計算者



計算者



備考

全体

201

点	①	②	③	④	⑤	⑥	③ × ⑤		② × ⑥		
	X	X-(定数)	X _{n-1} -X _{n+1}	Y	Y-(定数)	Y _{n-1} -Y _{n+1}	+	-	+	-	
50'	-151, 961.806	-151.900, 61.806	10.810	-38, 330.192	-38.300, 30.192	-26.522					326.375520 = 1639.218732
1	965.653	65.653	94.404	327.094	27.094	-9.813					2557.781976 = 644.252889
2	-152, 056.210	156.210	93.441	320.379	20.779	-7.939					1906.234139 = 615.311190
9	059.094	159.094	0.661	323.155	23.155	+66.714					15.305455 = 10295.609116
III	056.871	156.871	0.883	385.093	85.093	+84.387	75.137119				13237.873017
15	058.211	158.211	1.443	407.542	107.542	+24.966	155.183126				3949.895826
16	055.428	155.428	14.737	410.059	110.059	+0.587	162.989487				91.236236
V	043.474	143.474	12.596	408.129	108.129	-6.434	1367.992884				923.111716
K.52	042.832	142.832	2.211	403.625	103.625	-13.611	229.114975				1744.086352
K.53	041.263	141.263	2.928	394.518	94.518	-16.315	276.748704				2304.705845
K.54	039.904	139.904	3.131	387.310	87.310	-24.235	273.367610				3390.573440
K.55	038.132	138.132	1.865	370.283	70.283	-21.566	130.376965				2978.954712
K.56	038.049	138.049	0.106	365.744	65.744	-14.896					6.968864 = 2056377904
K.56-1	038.238	138.238	0.885	355.387	55.387	-15.189					49.07495 = 2099.696982
K.57	038.934	138.934	19.192	350.555	50.555	-2.622	970.251560				364284948
K.58	019.046	119.046	29.369	352.765	52.765	+6.242	1549.655285				624.039132
K.59	009.565	109.565	12.447	355.797	55.797	+3.291	694.525259				360.578415

面積計算書											工区	ブロック	計算者	精算者	備考	全体	頁
			2		1												2
点	①	②	③	④	⑤	⑥	③	⑤	②	⑥							
	X	X-(定数)	X _{n-1} -X _{n+1}	Y	Y-(定数)	Y _{n-1} -Y _{n+1}	+	-	+	-							
K.60	-152, 006.599	-151.900, 106.599	- 13.183 =	-38, 356.056	-38, 56.056 =	+ 0.853 =	738.986248 =										90.928947
K.61	-151.996.382,	96.382 =	- 14.111 =	356.650 =	56.650 =	+ 0.084 =	799.398150 =										8.076088
K.62	992.488,	92.488 =	- 8.010 =	356.140 =	56.140 =	- 2.227 =	449.681400 =										205.970776
K.63	998.372,	88.372 =	- 6.281 =	354.423 =	54.423 =	- 2.199 =	741.830863 =										194.330028
K.63-1	986.207 =	86.207 =	- 3.739 =	353.941 =	53.941 =	- 0.598 =	201.685399 =										51.551786
K.64	924.633 =	24.633 =	- 9.449 =	353.825 =	53.825 =	+ 1.484 =	503.592425 =										125.595372
K.65	976.758,	76.758 =	- 12.172 =	355.425 =	55.425 =	+ 0.216 =	674.633100 =										16.579728
K.66	972.461,	72.461 =	- 6.126 =	354.041 =	54.041 =	- 2.294 =	731.055166 =										166.225534
K.66-1	970.632,	70.632 =	- 5.654 =	353.131 =	53.131 =	- 2.255 =	790.402674 =										159.275160
K.67	966.807 =	66.807 =	- 9.184 =	351.726 =	51.726 =	- 0.879 =	475.602624 =										58.723353
K.67-1	961.448,	61.448 =	- 8.197 =	352.252 =	52.252 =	+ 2.546 =	428.309644 =										156.446608
K.68	958.610 =	58.610 =	- 6.605 =	354.332 =	54.332 =	+ 1.364 =	359.862860 =										79.944040
K.69	954.843,	54.843 =	+ 3.196 =	353.616 =	53.616 =	- 24.140 =											171.356736 = 1323.910020
																	12948.3011003, 5031.040185, 21120.561367, 29036.822585
																	7916.261218
																	7916.261218
																	$\frac{1}{2} = 3958.13 =$

面地計算

面積計算書

工
区

※2

ブ
ロ
ック

/

計
算
者



精
算
者



備
考

(1)

保留地才 1-1号

点	①	②	③	④	⑤	⑥	③ × ⑤		② × ⑥	
	X	X-(定数)	X _{n-1} -X _{n+1}	Y	Y-(定数)	Y _{n-1} -Y _{n+1}	+	-	+	-
1	⁻¹⁵¹ 965.653	^{-151.966} 5.653	+ 11.276	⁻⁵⁸ 327.094	^{-38.320} 7.094	- 3.248			79.991944	18.362944
2	973.630	13.630	+ 7.384	326.503	6.503	+ 4.896			48.018152	66.732480
53	973.037	13.037	- 11.426	331.990	11.990	+ 3.753	136.997740			48.927361
50	962.204	2.204	- 10.683	330.256	10.256	- 2.239	109.564848			4.934756
43	962.354	2.354	+ 3.449	329.751	9.751	- 3.162			33.631199	7.443348
									246.562588	151.641295
									30.739048	115.550341
									84.921293	84.921293
									1/2 = 42.4606465	

面積計算書

工区

※2

ブロック

1

計算者

新算者

備考

(2) 201-1

点	①	②	③	④	⑤	⑥	③	×	⑤	②	×	⑥
	X	X-(定数)	X _{n-1} -X _{n+1}	Y	Y-(定数)	Y _{n-1} -Y _{n+1}	+	-	-	+	-	
	-151	-151.960		-38	-38.320							
50	962.204	2.204	+ 11.999	330.256	10.256	- 2.187			123.061744	4.820148		
53	973.037	13.037	+ 11.426	331.990	11.990	- 3.753			136.997740	48.927861		
2	973.630	13.630	+ 13.958	326.503	6.503	- 6.479			90.768874	88.308770		
3	986.995	26.995	+ 11.427	325.511	5.511	+ 13.232			62.974197			357.197840
61	985.057	25.057	- 2.006	339.735	19.735	+ 17.452	39.588410					437.294764
60	994.989	24.989	- 17.699	342.963	22.963	+ 1.632	406.422137					40.782048
58	967.358	7.358	- 18.275	341.367	21.367	- 3.848	390.481925			28.313584		
57	966.714	6.714	- 1.392	339.115	19.115	- 4.132	26.608080			27.742248		
56	965.966	5.966	- 1.674	337.235	17.235	- 3.656	28.851390			21.811696		
55	965.040	5.040	- 2.401	335.459	15.459	- 3.858	37.117059			19.444320		
54	963.565	3.565	- 4.002	333.377	13.377	- 1.282	53.534754			4.570330		
49	961.038	1.038	- 1.361	334.177	14.177	- 3.121	19.294897			3.239598		
							1001.898652	413.802555	247.178555	835.274652		
							588.096097			588.096097		
										1/2 = 294.0480485		

面積計算書

工
区

ブ
ロ
ック

計
算
者



測
算
者



備
考

(3) 202-1
41

3)

4)

点	①	②	③	④	⑤	⑥	③ × ⑤		② × ⑥	
	X	X - (定数)	X _{n-1} - X _{n+1}	Y	Y - (定数)	Y _{n-1} - Y _{n+1}	+	-	+	-
3	-151 986.995	-151.980 6.995	+ 3.933	-38 325.511	-38.320 5.511	- 14.371			21.674763	100.525145
4	988.990	8.990	+ 2.098	325.364	5.364	+ 14.757			11.253672	132.665430
62	989.093	9.093	- 3.933	340.268	20.268	+ 14.371	79.714044			130.275503
61	985.057	5.057	- 2.098	339.725	19.725	- 14.757	41.404030		74.626149	
							121.118074	22.928435	175.151294	2263.340933
							88.189639			88.189639
									1/2 = 44.0948195	
4	-151 988.990	-151.980 8.990	+ 3.886	-38 325.364	-38.320 5.364	- 15.200			20.844504	136.648000
5	992.979	12.979	+ 4.155	325.068	5.068	+ 15.439			21.057540	200.382781
63	993.145	13.145	- 3.886	340.803	20.803	+ 15.200	80.340458			199.804000
62	989.093	9.093	- 4.155	340.268	20.268	- 15.439	84.213540		140.386827	
							165.053998	41.902044	277.034827	400.186781
							123.151954			123.151954
									1/2 = 61.575977	

面積計算書

工区 42
 ブロック 1
 計測者
 精算者
 備考 (5) 202-1, 198-1

点	①	②	③	④	⑤	⑥	③ × ⑤		② × ⑥	
	X	X-(定数)	X _{n-1} -X _{n+1}	Y	Y-(定数)	Y _{n-1} -Y _{n+1}	+	-	+	-
5	-151,992.979	-151,970 2.979	+ 13.314	-38, 325.068	-38.320 5.068	- 16.735		67.475352	49.853565	
6	-152,006.459	16.459	+ 14.895	324.068	4.068	+ 17.679		60.592860		290.978661
64	-152,007.874	17.874	- 13.314	342.747	22.747	+ 16.735	302.853558			299.121390
63	-151,993.115	3.115	- 14.895	340.803	20.803	- 17.679	309.860685		55.600455	
							612.714243	128.068212	105.454020	590.100051
							484.646031			484.646031
									1/2=242.3230155	

面積計算書

工
区

72

ブ
ロ
ック

/

計
算
者



精
算
者



備
考

7. 205

点	①	②	③	④	⑤	⑥	⑧ ×	⑤	② ×	⑥
	X	X-(定数)	X _{n-1} -X _{n+1}	Y	Y-(定数)	Y _{n-1} -Y _{n+1}	+	-	+	-
7	-162, 041.133	-162.040, 1.133	+ 15.824	-39, 321.177	-39.320, 1.177	- 22.701			13.682528	26.720233
8	036.210	16.210	+ 17.961	320.379	0.379	+ 1.652			6.807217	26.876120
9	057.074	17.074	+ 2.128	323.155	3.155	+ 23.833			6.713840	466.867302
10	058.338	18.338	- 18.708	344.212	24.212	+ 19.925	432.758076			365.380650
72	040.386	0.386	- 17.205	343.080	23.080	- 22.715	377.071400		18.767990	
							850.047476		37.209687	36.759723
									807.328132	
							812.837707			812.837707
										72 = 406.6199565

面積計算書

工
区

第 2

ブ
ロ
ック

1

計
算
者



精
算
者



備
考

8

206

点	①	②	③	④	⑤	⑥	③ ×	⑤	② ×	⑥
	X	X - (定数)	X _{n-1} - X _{n+1}	Y	Y - (定数)	Y _{n-1} - Y _{n+1}	+	-	+	-
	-1521	-152.030		-38.	-38.340					
12	058.249	28.249	+ 16.713	346.711	6.711	+ 37.007		112.160.943		1045.410743
13	056.961	26.961	- 17.906	382.583	42.583	+ 36.265	762.491.198			950.779.665
23	040.343	10.343	- 17.260	381.976	41.976	- 12.361	749.691.360		127.849.823	
24	039.101	9.101	- 1.277	370.222	30.222	- 16.194	38.493.494		147.381.594	
25	039.066	9.066	+ 0.136	365.782	25.782	- 14.754		3.406.362	133.759.764	
51	039.237	9.237	+ 0.266	355.468	15.468	- 15.164		13.395.288	140.069.868	
52	039.932	9.932	+ 1.011	350.618	10.618	- 9.892		10.234.798	98.247.345	
26	040.248	10.248	+ 18.317	345.576	5.576	- 3.907		102.134.692	40.238.936	
							1550.776052	241.832973	687.247329	1996.190408
							1308.843079			1308.843079
									130654.4216395	

面積計算書

工区

72

ブロック

1

計算者



測定者



備考

9.

208.

209

点	①	②	③	④	⑤	⑥	③ × ⑤		② × ⑥	
	X	X-(定数)	X _{n-1} -X _{n+1}	Y	Y-(定数)	Y _{n-1} -Y _{n+1}	+	-	+	-
	-152,	-152.040		-38,	-38.381					
13	056.761	16.761	+ 16.528	382.583	1.583	+ 3.117			26.163824	52.867497
14	056.871	16.871	+ 0.643	385.093	4.093	+ 14.954			2.672729	252.288934
14	057.614	17.614	- 13.723	387.527	16.527	+ 13.315	230.244651			234.530410
20	042.948	2.948	- 15.357	398.408	17.408	- 3.167	267.334656			9.326316
21	042.257	2.257	- 2.056	394.370	13.370	- 11.242	27.488720			25.373194
22	040.892	0.892	- 1.914	387.166	6.166	- 12.394	11.201724			11.055448
23	040.343	0.343	+ 16.069	381.976	0.976	- 4.583			15.683344	1.571969
							436.269751	44.519897	47.336927	539.686781
							492.349854			492.349854
									15.246.174927	

面積計算書

工
区

第2

ブ
ロ
ック

1

計
算
者



精
算
者



備
考

10 210-1

点	①	②	③	④	⑤	⑥	③ × ⑤		② × ⑥	
	X	X-(定数)	X _{n-1} -X _{n+1}	Y	Y-(定数)	Y _{n-1} -Y _{n+1}	+	-	+	-
14	-152, 057.614	-152,040 17.614	+ 15.263	-38, 397.537	-38,390 7.537	+ 9.125			115.637231	160.903270
15	058.211	18.211	- 2.126	407.543	17.543	+ 12.522	39.348998			228.038142
16	055.428	15.428	- 13.703	410.059	20.059	+ 0.753	274.268477			11.617084
17	044.508	4.508	- 11.618	408.296	18.296	- 6.613	212.562928		29.211404	
18	043.810	3.810	- 1.560	403.446	13.446	- 9.288	20.975760		37.673280	
20	042.948	2.948	+ 13.204	399.408	9.408	- 5.909		116.064037	17.419732	
							446.756163	231.101263	84.904416	400.559316
							315.654900			315.654900
									X=157.227450	

面積計算書

工区

#2

ブロック

1

計算者



精算者



備考

(12) 200-11, 201-3

点	①	②	③	④	⑤	⑥	③ × ⑤		② × ⑥	
	X	X-(定数)	X _{n-1} -X _{n+1}	Y	Y-(定数)	Y _{n-1} -Y _{n+1}	+	-	+	-
49	961.038 ⁻¹⁵¹	11.038 ^{-151.950}	+ 6.845 ₁	334.177 ⁻³⁸¹	4.177 ^{-38.930}	- 15.330 ₁		28.591565 ₁	169.212540 ₁	
54	963.565 ₁	13.565 ₁	+ 4.002 ₁	333.377 ₁	3.377 ₁	+ 1.282 ₁		13.514754 ₁		17.390330 ₁
55	965.040 ₁	15.040 ₁	+ 2.401 ₁	335.459 ₁	5.459 ₁	+ 3.858 ₁		13.107059 ₁		58.024320 ₁
56	965.966 ₁	15.966 ₁	+ 1.674 ₁	337.235 ₁	7.235 ₁	+ 3.656 ₁		12.111390 ₁		58.371696 ₁
57	966.714 ₁	16.714 ₁	+ 1.392 ₁	339.115 ₁	9.115 ₁	+ 4.132 ₁		12.688080 ₁		69.062248 ₁
58	967.358 ₁	17.358 ₁	+ 18.275 ₁	341.367 ₁	11.367 ₁	+ 3.848 ₁		207.731925 ₁		66.793584 ₁
60	984.989 ₁	34.989 ₁	+ 17.421 ₁	342.987 ₁	12.983 ₁	+ 11.480 ₁		225.828423 ₁		401.673720 ₁
39	984.779 ₁	34.779 ₁	- 0.310 ₁	352.847 ₁	22.847 ₁	+ 9.869 ₁	7.082570 ₁			343.233951 ₁
40	984.679 ₁	34.679 ₁	- 7.962 ₁	352.832 ₁	22.832 ₁	+ 1.533 ₁	181.788384 ₁			53.162907 ₁
41	976.817 ₁	26.817 ₁	- 12.002 ₁	354.380 ₁	24.380 ₁	+ 0.221 ₁	292.608760 ₁			5.926557 ₁
42	972.677 ₁	22.677 ₁	- 9.835 ₁	353.053 ₁	23.053 ₁	- 3.652 ₁	226.726255 ₁		82.816404 ₁	
44	966.982 ₁	16.982 ₁	- 7.994 ₁	354.728 ₁	24.728 ₁	- 3.367 ₁	165.699632 ₁		57.178394 ₁	
66	964.683 ₁	14.683 ₁	- 10.262 ₁	349.686 ₁	19.686 ₁	- 2.021 ₁	202.017732 ₁		29.674343 ₁	
48	956.720 ₁	6.720 ₁	- 3.645 ₁	348.707 ₁	18.707 ₁	- 15.509 ₁	68.187015 ₁		104.220480 ₁	
							1144.110348 ₁	513.573196 ₁	443.102161 ₁	1073.639313 ₁
							630.537152 ₁			630.537152 ₁
										1/2 = 315.268576 ₁

面積計算書

工区

#2

ブロック

1

計算者

定
算

計算者



備考

431 200-7

点	①	②	③	④	⑤	⑥	③ × ⑤		② × ⑥	
	X	X-(定数)	X _{n-1} -X _{n+1}	Y	Y-(定数)	Y _{n-1} -Y _{n+1}	+	-	+	-
	-151	-151.950		-30	-30.340					
48	956.720	6.720	+ 9.159	308.707	8.707	- 3.042		79.747413	20.442240	
66	964.683	14.683	+ 10.262	318.686	9.686	+ 2.021		99.397732		29.674343
44	966.982	16.982	- 3.474	350.728	10.728	+ 1.579	37.269072			31.909178
45	961.209	11.209	- 8.441	351.565	11.565	+ 2.572	97.620165			28.829548
46	958.541	8.541	- 5.685	353.300	13.300	+ 1.163	75.610500			9.933183
47	955.524	5.524	- 1.821	352.728	12.728	- 4.593	23.177688		25.371732	
							233.677425	179.145145	45.813972	100.346252
							54.532280			54.532280
									Y ₂ = 27.266140	

面積計算書		工区	ブロック	計算者	精算者	備考	泥上 / 201	
点	①	②	③	④	⑤	⑥	③ × ⑤	② × ⑥
	X	X-(定数)	X _{n-1} -X _{n+1}	Y	Y-(定数)	Y _{n-1} -Y _{n+1}	+ -	+ -
V	-152.	-152.038		-38.	-38.340			
	043.474	5.474	-1.676	408.129	68.129	-4.671	114.184204	25.569054
k.52	042.832	4.832	-2.211	403.625	63.625	-13.611	140.674275	65.768352
k.53	041.263	3.263	-2.928	394.518	54.518	-16.315	159.629704	53.235245
k.54	039.904	1.904	-3.121	387.310	47.310	-24.235	148.127610	46.143445
k.55	038.132	0.132	-1.885	370.283	30.283	-21.566	56.174965	2.846712
k.56	038.049	0.049	+0.106	365.744	25.744	-14.896		2.728864
								0.729904
k.54-1	038.238	0.238	+0.885	355.387	15.387	-15.189	13.617495	3.614982
k.57	038.934	0.934	+1.012	350.555	10.555	-9.874	10.681660	9.222316
A	039.250	1.250	+1.314	345.513	5.513	-4.979	7.244082	6.223750
26	040.248	2.248	+0.682	345.576	5.576	+5.105	3.802832	11.426040
52	039.932	1.932	-1.011	350.618	10.618	+9.892	10.734798	19.111344
51	039.237	1.237	-0.866	355.468	15.468	+15.164	13.395288	18.757268
25	039.066	1.066	-0.136	365.782	25.782	+14.754	3.506252	15.727764
24	039.101	1.101	+1.886	370.222	30.222	+21.384		55.185372
								23.543784
22	040.892	2.892	+3.156	387.166	47.166	+24.148	148.255296	69.836016
21	042.257	4.257	+2.918	394.370	54.370	+16.280	158.651660	69.303960
19	043.810	5.810	+2.251	403.446	63.446	+13.226	142.916946	80.910060

面積計算書							工区	ブロック	計算者	計測者	備考	
							72	1			流土1	292
点	①	②	③	④	⑤	⑥	③ × ⑤	② × ⑥				
	X	X-(定数)	X _{n-1} -X _{n+1}	Y	Y-(定数)	Y _{n-1} -Y _{n+1}	+	-				
17	⁻¹⁸² 244.508	6.508	-0.336	⁻³⁸ 408.296	68.296	+4.683	22.747466	32.476964				
							669.374282	128.789445				
							128.789445	128.789445				
								1/2 = 62.8947225				
								水路25号線				

面積計算書

工区

2

ブロック

1

計算者



測定者



備考

派上2

291

並	①	②	③	④	⑤	⑥	③ × ⑤		② × ⑥	
	X	X-(定数)	X _{n-1} -X _{n+1}	Y	Y-(定数)	Y _{n-1} -Y _{n+1}	+	-	+	-
47	-151.955.524	-151.900.55.524	+ 3.303	-39.352.728	-39.340.12.728	- 0.391			42.040.584	21.709.884
46	958.541	58.541	+ 5.685	353.300	13.300	- 1.163			75.610.500	68.083.187
45	961.209	61.209	+ 8.441	351.565	11.565	- 2.572			97.620.165	157.429.528
44	966.982	66.982	+ 11.468	350.728	10.728	+ 1.488			122.028.704	99.669.216
42	972.677	72.677	+ 9.835	353.053	13.053	+ 3.652			128.376.255	265.416.400
41	976.817	76.817	+ 12.002	354.380	14.380	- 0.221			172.588.760	16.976.557
40	984.679	84.679	+ 11.859	352.832	12.832	- 0.960			152.174.688	81.291.840
37	988.676	88.676	+ 8.087	353.420	13.420	+ 2.310			108.527.540	204.841.560
36	992.766	92.766	+ 7.762	355.142	15.142	+ 2.220			117.532.204	205.940.520
35	996.438	96.438	+ 13.777	355.640	15.640	- 0.122			215.472.280	11.765.436
34	-152.006.543	106.543	+ 12.928	355.020	15.020	- 0.858			194.178.560	91.413.894
32	009.366	09.366	+ 12.250	354.782	14.782	- 3.235			181.079.500	353.799.100
31	018.793	18.793	+ 27.127	351.785	11.785	- 5.019			319.691.695	596.222.067
30	036.493	36.493	+ 18.133	349.713	9.763	- 8.923			177.032.479	1217.927.039
29	036.926	36.926	+ 21.845	342.862	2.862	- 5.551			62.520.390	760.076.226
10	058.338	58.338	+ 21.377	344.212	4.212	+ 2.350			90.039.924	372.094.300
11	058.303	58.303	+ 20.484	345.212	5.212	- 0.289	106.722.608		45.749.567	

面積計算書		工区	第	ブロック	1	計算者	図	計算者	備考	泥上	2	292
点	①	②	③	④	⑤	⑥	③ × ⑤	② × ⑥				
	X	X-(定数)	X _{n-1} -X _{n+1}	Y	Y-(定数)	Y _{n-1} -Y _{n+1}	+	-	+	-		
18	-152, 037.854	-154,900, 137.854	-20.875	-58, 343.923	-38,340, 3.923	+ 5.510	81.892625					759.575540
27	037.428	137.428	-18.808	350.722	10.722	+ 8.842	201.659376					125.139376
K.58	019.046	119.046	-27.863	352.765	12.765	+ 5.075	355.671195					604.158450
K.59	009.565	109.565	-12.447	355.797	15.797	+ 3.291	196.625259					360.578415
K.60	006.599	106.599	-13.183	356.056	16.056	+ 0.853	211.666248					90.928947
K.61	-151, 996.382	96.382	-14.111	356.650	16.650	+ 0.084	234.948150					8.096088
K.62	992.488	92.488	-8.010	356.140	16.140	- 2.227	129.281400					205.970776
K.63	988.372	88.372	-6.281	354.423	14.423	- 2.199	90.590863					194.330028
K.63-H	986.207	86.207	-3.739	353.941	13.941	- 0.598	62.125399					51.551786
K.64	984.633	84.633	-9.449	353.825	13.825	+ 1.484	130.632425					125.595372
K.65	976.758	76.758	-12.172	355.425	15.425	+ 0.216	187.757100					16.579728
K.66	972.461	72.461	-6.126	354.041	14.041	- 2.294	86.015166					166.225534
K.66-H	970.632	70.632	-5.654	353.131	13.131	- 2.255	74.242674					159.275160
K.67	966.807	66.807	-9.184	351.786	11.786	- 0.879	108.242624					58.723353
K.67-H	961.448	61.448	-8.197	352.252	12.252	+ 2.546	100.429644					56.446608
K.68	958.610	58.610	-6.210	354.332	14.332	+ 1.439	89.001720					84.339790
59	955.238	55.238	-3.086	353.691	13.691	- 1.604	42.250426					88.601752

面積計算書

工
区

ブ
ロ
ック

1

計
算
者

符
算
者



備
考

水路1号線1部

点	①	②	③	④	⑤	⑥	⑦	⑧	⑨	⑩
	X	X-(定数)	X _{n-1} -X _{n+1}	Y	Y-(定数)	Y _{n-1} -Y _{n+1}	+	-	-	-
30'	-152. 036.426	-152.030 6.426-	- 0.502-	-38, 350.834	-38.340- 10.834-	- 7.860-	5.438.668-			50.508.360-
29	036.926-	6.926-	+ 21.912-	342.862	2.862-	- 6.622-		62.712.144-		45.863.972-
10	058.338-	28.338-	+ 21.377-	344.212-	4.212-	+ 2.350-		90.079.924-		66.594.300-
11	058.309,	28.303,	- 20.484,	345.212,	5.212-	- 0.289,	106.762.608-			8.179.567-
18	037.854,	7.854-	- 20.875-	343.923,	3.923-	+ 5.510,	81.892.625-			43.275.540-
27	037.428-	7.428-	- 1.428-	350.722-	10.722-	+ 6.911-	15.311.016-			51.374.909-
							209.404.917-	152.752.068,	1074.551.899,	161.204.748,
							56.652.869			56.652.869-
							x 1/2 =	29.326.4265-		

面積計算書

工区

第2

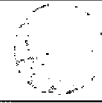
ブロック

1

計算者



籍別者



備考

水路1号線

点	①	②	③	④	⑤	⑥	③ × ⑤		② × ⑥	
	X	X - (定数)	X _{n-1} - X _{n+1}	Y	Y - (定数)	Y _{n-1} - Y _{n+1}	+	-	+	-
	-152	-152.030		-38.	-38.340					
11	058.303	28.303	20.395	345.212	5.212	2.788		106.298740		78.908764
12	058.249	28.249	19.263	346.711	6.711	0.301	127.264689			2.502949
A	039.250	9.250	19.315	345.513	5.513	3.244	106.483595			35.557000
K.47	038.934	8.934	1.222	340.555	10.555	5.209	19.231210			46.537206
27	037.428	7.428	1.220	340.722	10.722	4.632	11.579760		49.262496	
18	037.854	7.854	20.275	343.923	3.923	5.510		21.892625	43.276540	
							245.159248	188.191365	92.538036	169.505919
							76.967883			76.967883
									1/2 38.4839415	
									+28.32	
							水路1号線		66.80	

面積計算書

工区

#2

ブロック

/

計算者



精算者



備考

街路

点	①	②	③	④	⑤	⑥	③ × ⑤		② × ⑥	
	X	X-(定数)	X _{n-1} -X _{n+1}	Y	Y-(定数)	Y _{n-1} -Y _{n+1}	+	-	+	-
50'	961.806	11.806	+ 7.511	330.192	10.192	- 23.865		76.552112	281.750190	
43	962.354	12.354	- 6.568	329.751	9.751	+ 23.499	64.044568			290.306646
59	955.238	5.238	- 7.511	353.691	33.691	+ 23.865	253.053101			125.004870
K69	954.843	4.843	+ 6.568	353.616	33.616	- 23.499		220.789888	113.805657	
							317.097669	297.342000	395.555847	415.311516
							19.755669			19.755669
									1/2 = 9.8778345	

計年
月
算日

計
算
者



檢
查
者

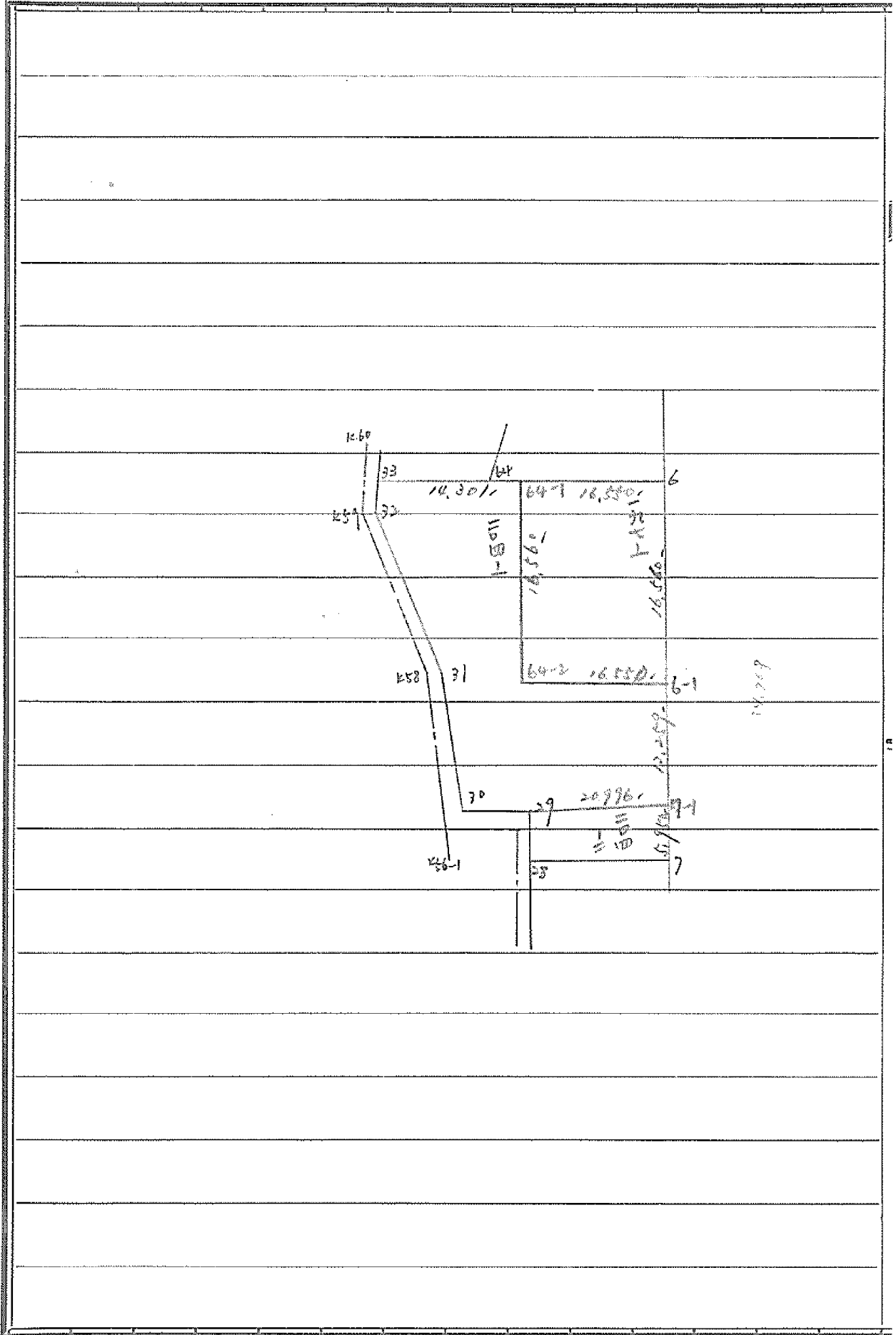


B.NO. /

各筆面積計算書

地番	算式	隅切	地積	摘要
1	保留地 1-1号		42 46	
2	201-1		294 04	
3	202-1		44 09	
4			61 57	
5	198-1, 202-1		242 32	
6	197-1, 204		927 43	
7	205		406 41	5.50.8.5 変更
8	206		654 42	203-1 359.00 ^{m2}
9	208, 209		246 17	203-2 10.51 ^{m2}
10	210-1		157 02	
11	203-1, 203-2		316 43	(4)+(11) 378.00
12	200-4, 201-3		315 26	
13	200-3		27 26	
			3,735 68	
	泥上 201	62 89		水路25号線
	202	82 81 111 13		水路24号線
	水路筋 1号線	66 80 38 48		水路 1号線
	街路	9 07		
		222 37		
		合計	3,958 05	
		全体	3,958 13	
			差 - 0 08	

X=K.E. ENO.1



面積計算書

工区

72地正

1.

計算者

精算者

備考

204-1

点	①	②	③	④	⑤	⑥	⑦	⑧	⑨	⑩
	X	X - (定数)	X _{n-1} - X _{n+1}	Y	Y - (定数)	Y _{n-1} - Y _{n+1}	+	-	+	-
33	-152,008.789	-1.789	1.657	-38,354.821	-33.831	-14.211	56,057.967			24,423.479
64-1	-152,007.709	.709	15.435	-38,340.571	-19.571	-15.485		302,078.325		10,978.865
64-2	-152,024.224	17.224	15.265	-38,327.346	-18.346	-17.728		280,051.690		305,347.072
6-1	-152,022.974	15.974	10.975	-38,322.843	-1.843	-17.409		20,226.925		278,091.366
7-1	-152,035.199	28.199	13.952	-38,321.937	0.937	20.019		13,073.024		564,515.751
29	-152,036.926	29.926	1.294	-38,342.862	21.862	27.826		28,289.428		832,720.876
30	-152,036.493	29.493	-18.133	-38,349.762	28.762	8.923	51,559.479			263,166.039
31	-152,018.793	11.793	27.127	-38,351.785	30.785	5.019	835,104.695			59,189.067
32	-152,009.366	2.366	-10.004	-38,354.782	33.782	3.046	327,955.128			7,206.836
							170,671.269	643,719.452	619,840.782	1726,798.599
							1106.957817			1106.957817

実検

$$\frac{1}{2} \times (553.48 + 99.88) = 326.68$$

$$927.43 - (274.07 + 99.88) = 553.48$$

面積計算書

工
区

2X2042

フ
ロ
ン
ク

1

計算者

測量者

備考

197-1

204-2

点	①	②	③	④	⑤	⑥	+	-	②	+	⑥
	X	X - (定数)	X _{n-1} - X _{n+1}	Y	Y - (定数)	Y _{n-1} - Y _{n+1}					
6	-152,006.459	- 0.459	15.265	-38,324.068	- 2.068	17.728		31.568020		8.137.152	
6-1	-152,022.974	- 16.974	17.765	-38,322.843	0.843	15.278		14.975895			259.328772
64-2	-152,024.224	- 18.224	- 15.265	-38,329.246	- 17.346	17.728					323075072
64-1	-152,007.709	- 1.709	- 17.765	-38,340.571	- 18.571	- 15.278		829.913215		26.110102	
								594.700505	46.543915	34247254	522403844
								548.156590			548.156590
											1/2 = 274.078295
29	-152,026.926	- 1.926	- 5.187	-38,342.862	- 2.862	- 21.143		113.398.194		40.721418	
7-1	-152,025.199	- 0.199	4.207	-38,321.927	0.927	- 21.365		3.941.959		4251635	
7	-152,041.122	- 6.122	5.187	-38,321.497	2.497	21.143		2.577.939		129.670019	
28	-152,040.386	- 5.386	- 4.207	-38,343.082	- 22.082	21.365		92.890.560		115.071.890	
								206.288754	6.519.898	44.973053	244.741909
								199.768856		199.768856	
											1/2 = 99.884428