

BLOCK NO. 36

画地略図

工区

※Z

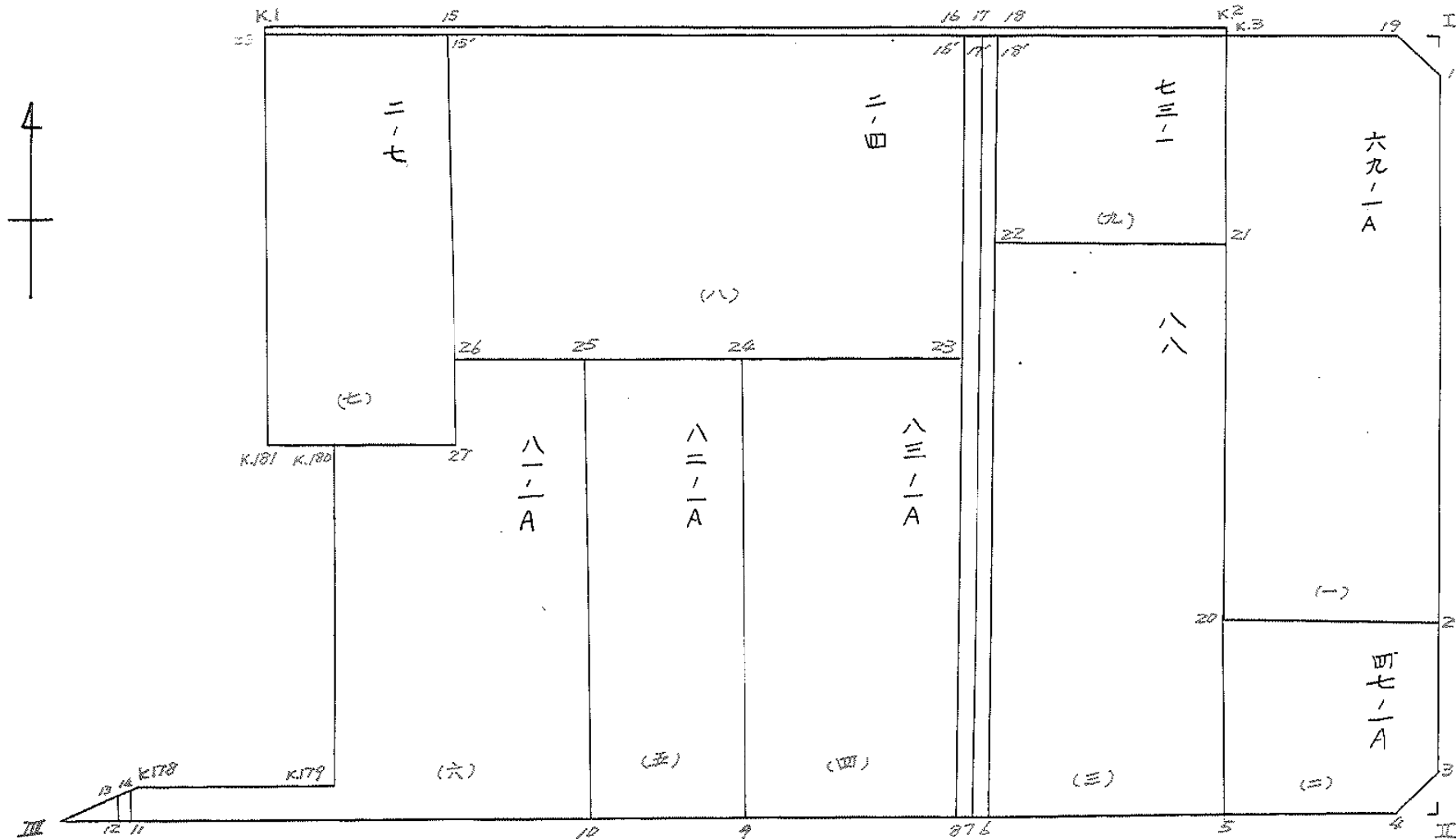
ブロック

36

記入者



点検者



面積計算書

工区

第2

ブロック

36

計算者

精算者

備考

全体

点	①	②	③	④	⑤	⑥	③ × ⑤		② × ⑥	
	X	X-(定数)	X _{n-1} -X _{n+1}	Y	Y-(定数)	Y _{n-1} -Y _{n+1}	+	-	+	-
	-151	-151.800		-39	-39.000					
I	873.078	73.078	+ 64.154	064.431	64.431	- 0.953			4433.506374	-69.643334
5	934.081	134.081	+ 63.908	066.378	66.378	+ 5.041			4241.952448	675.902321
4	936.984	136.984	- 1.845	069.472	69.472	+ 152.142	128.178840			20841.019728
III	932.236	132.236	- 5.903	219.520	219.520	+ 145.375	1289.923560			19223.808500
K.178	931.081	131.081	- 9.070	214.847	214.847	- 25.263	15.039290			3311.499303
K.179	932.166	132.166	- 27.345	193.254	193.254	- 22.823	6284.612665			3016.424618
K.180	903.736	103.736	- 28.625	192.024	192.024	+ 2.748	5477.484600			285.066528
K.181	903.641	103.641	- 40.271	196.005	196.005	+ 0.960	7893.317355			99.495360
K.1	863.465	63.465	- 35.061	192.984	192.984	- 110.043	5766.212024			6983.878995
K.2	868.580	68.580	+ 5.506	085.962	85.962	- 106.976		473.306772	7336.44080	
K.3	868.971	68.971	+ 1.347	086.008	86.008	- 18.631		115.252776	1284.998701	
19	869.927	69.927	+ 4.107	067.331	67.331	- 21.577		276.528417	1508.814879	
									26854.765334	-9241.146307
									23511.673910	-41125.292427
									7613.618527	17613.618527
									1/2 = 8806.809	

面地計算

面積計算書

工区

第2

ブロック

36

計算者

精算者

備考

1. 69-1A
2. 47-1A

点	①	②	③	④	⑤	⑥	③ × ⑤		② × ⑥	
	X	X-(定数)	X _{n-1} -X _{n+1}	Y	Y-(定数)	Y _{n-1} -Y _{n+1}	+	-	+	-
	-151	-151.800		-39.	-39.060					
1	873.078	73.078	+ 55.635	064.431	4.431	- 1.225		246.518685	89.520550	
2	925.562	125.562	+ 51.841	066.106	6.106	+ 21.840		316.541466		2742.274080
20	924.919	124.919	- 56.591	086.271	26.271	+ 19.902	1486.702161			2486.137938
K.3	868.971	68.971	- 54.992	086.008	26.008	- 18.940	1430.231936		1306.310740	
19	869.927	69.927	+ 4.107	067.331	7.331	- 21.577		30.109417	1508.814879	
								2916.934097	593.168248	2904.646169
										5228.412018
								2323.765849		2323.765849
									$\frac{1}{2} = 1161.8829245$	
	-151	-151.920		-39.	-39.060					
2	925.562	5.562	+ 9.162	066.106	6.106	- 19.893		55.943172	110.644866	
3	934.081	14.081	+ 11.422	066.378	6.378	+ 3.366		72.849516		47.396646
4	936.984	16.984	+ 2.367	069.472	9.472	+ 19.947		22.420224		338.779848
5	936.448	16.448	- 12.065	086.325	26.325	+ 16.799	317.611125			276,309.952
20	924.919	4.919	- 10.886	086.271	26.271	- 20.219	285.986106		99.457261	
								603.597231	151.212912	210.102127
										662.486446
								452.384319		452.384319
									$\frac{1}{2} = 226.1921595$	

面積計算書

工区

第2地区

ブロック

36

計算者



精算者



備考

3. 88

4. 83-1A

点	①	②	③	④	⑤	⑥	③ × ⑤	② × ⑥
	X	X-(定数)	X _{n-1} -X _{n+1}	Y	Y-(定数)	Y _{n-1} -Y _{n+1}	+ -	+ -
	-151,	-151.890		-39	-39.080			
21	891.413	1.413	+45.782	086.113	6.113	-23.452	279.865366	33.137676
5	936.448	46.448	+44.244	086.325	6.325	+25.036	279.843300	1162.872128
6	935.657	45.657	-45.782	111.149	31.149	+23.452	1426.063518	1070.747964
22	890.666	0.666	-44.244	109.777	29.777	-25.036	1317.453588	16.673976
							2743.517106	559.708666
							49.811652	2233.620092
							2183.808440	2183.808440
							$\frac{1}{2} = 1091.904220$	
	-151	-151.890		-39	-39.110			
23	896.704	6.704	+40.194	111.961	1.961	-26.121	78.820434	176.115184
8	935.593	45.593	+38.016	113.148	3.148	+28.590	119.674368	1303.503870
9	934.720	44.720	-40.194	140.551	30.551	+26.121	1227.966894	1168.131120
24	895.399	5.399	-38.016	139.269	29.269	-28.590	1112.690304	154.367410
							2340.657198	198.494802
							329.472594	2471.634998
							2142.162396	2142.162396
							$\frac{1}{2} = 1071.081198$	

面積計算書

工
区

第2地区

ブロック

36

計算者

精算者

備 5. 82-1A

考 6. 81-1A

点	① X	② X-(定数)	③ X _{n-1} -X _n	④ Y	⑤ Y-(定数)	⑥ Y _{n-1} -Y _n	③	⑤	②	⑥
	-151.	-151,890		-39	-39.130					
24	895.399'	5.399'	+ 40.285'	139.269'	9.269'	- 18.896'			373.401665'	102.019504'
9	934.720'	44.720'	+ 38.677'	140.551'	10.551'	+ 21.491'			408.081027'	961.077520'
10	934.076'	44.076'	- 40.285'	160.760'	30.760'	+ 18.896'	1239.166600'			832.860096'
25	894.435'	4.435'	- 38.677'	159.447'	29.447'	- 21.491'	1138.921619'			95.312585'
							2378.088219'	781.482692'	197.332089'	1793.937616'
							1596.605527'	$\frac{1}{2} = 798.3027635'$		1596.605527'
	-151	-151,890		-39	-39.150					
25	894.435'	4.435'	+ 40.588'	159.447'	9.447'	- 18.506'			383.434836'	82.074110'
10	934.076'	44.076'	+ 37.916'	160.760'	10.760'	+ 55.451'			407.976160'	2444.058276'
11	932.351'	42.351'	- 2.990'	214.898'	64.898'	+ 54.104'	194.045020'			2291.358504'
14	931.086'	41.086'	- 1.270'	214.864'	64.864'	- 0.051'	82.377280'			2.095386'
K-178	931.081'	41.081'	+ 1.080'	214.847'	64.847'	- 21.607'		70.034760'		887.637167'
K-179	932.166'	42.166'	- 27.345'	193.257'	43.257'	- 22.823'	1182.862665'			962.354618'
K-180	903.736'	13.736'	- 27.773'	192.024'	42.024'	- 13.451'	1167.132552'			184.762936'
27	904.393'	14.393'	- 10.248'	179.806'	29.806'	- 12.758'	305.451888'			183.625894'
26	893.488'	3.488'	- 9.958'	179.266'	29.266'	- 20.359'	291.430828'			71.012192'
							3223.300233'	861.445756'	2373.562303'	4735.416780'
							2361.854477'			2361.854477'

3223.300233' 861.445756' 2373.562303' 4735.416780'
2361.854477'

$\frac{1}{2} = 1180.9272385'$

面積計算書

工区

※2

ブロック

36

計算者



計算者



備考

(7) 11-7

(8) 11-4

点	①	②	③	④	⑤	⑥	③ × ⑤		② × ⑥	
	X	X-(定数)	X _{n-1} -X _{n+1}	Y	Y-(定数)	Y _{n-1} -Y _{n+1}	+	-	+	-
15'	-151 864.588	-151,860 4,588	+40,529	-39 177.835	-38,170 7,835	-13,208			317,544,715	60,598,304
27	904.393	44,393	+39,148	179.806	9,806	+14,189			383,885,288	429,892,277
K.180	903.736	43,736	-0,752	192.024	22,024	+16,199	16,562,048			708,479,464
K.181	903.641	43,641	-39,872	196.005	26,005	+0,990	1036,871,360			43,204,590
28	863.864	3,864	-39,053	193.014	23,014	-18,170	898,765,742		70,208,880	
							1952,199,150	701,430,003	130,807,184	1381,567,331
							1250,769,147			1250,769,147
							$\frac{1}{2}=625,384,5735$			
16'	-151 867.774	-151,860 7,774	+32,116	-39 111.078	-39,110 1,078	-65,874			34,621,048	512,104,476
23	896.704	36,704	+25,714	111.961	1,961	+68,188			50,425,154	2502,772,352
26	893.488	33,488	-32,116	179.266	69,266	+65,874	2224,546,956			2205,988,512
15'	864.588	4,588	-25,714	177.835	67,835	-68,188	1744,309,190		312,846,544	
							3968,856,046	85,046,202	824,951,020	4708,760,864
							3883,809,844			3883,809,844
							$\frac{1}{2}=1941,904,922$			

面積計算書

工区 新Z地区

ブロック

36

計算者



精算者



備考

9.73-1
区画街路第15号線

点	①	②	③	④	⑤	⑥	③ × ⑤		② × ⑥	
	X	X-(定数)	X _{n-1} -X _{n+1}	Y	Y-(定数)	Y _{n-1} -Y _{n+1}	+	-	+	-
	-151	-151.860		-39	-39.080					
K.3	868.971	8.971	+ 23.543	086.008	6.008	-22.968		141.446344	206.045928	
21	891.413	31.413	+ 21.695	086.113	6.113	+ 23.769		132.621535		746.655597
22	890.666	30.666	- 23.543	109.777	29.777	+ 22.968	701.039991			704.336688
18'	867.870	7.870	- 21.695	109.081	29.081	- 23.769	630.912295		187.062030	
							1331.952206	274.067879	393.107958	1450.992285
							1057.884327			1057.884327
								1/2 = 529.9421635		
	-151	-151.930		-39	-39.215					
13	931.398	1.398	+ 0.084	215.855	0.855	- 2.623		0.071820	3.666954	
12	932.320	2.320	+ 0.838	215.897	0.897	+ 2.665		0.751686		6.182800
Ⅲ	932.236	2.236	- 0.922	218.520	3.520	- 0.042	3.245440		0.093912	
							3.245440	0.823506	3.760866	6.182800
							2.421934			2.421934
								1/2 = 1.210967		

面積計算書

工
区

才之地区

ブ
ロ
ック

36

計
算
者



精
算
者



備
考

水路第13号線
水路第15号線

点	①	②	③	④	⑤	⑥	③ × ⑤	② × ⑥
	X	X-(定数)	X _{n-1} -X _{n+1}	Y	Y-(定数)	Y _{n-1} -Y _{n+1}	+	-
	-151	-151.880		-37	-37.109			
18'	867.870	7.870	+67.835	109.081	0.081	+1.069	5.494635	8.413030
6	935.657	75.657	+67.755	111.149	2.149	+3.068	145.605495	232.115676
7	935.625	75.625	-67.835	112.149	3.149	-1.069	213.612415	80.843125
17'	867.822	7.822	-67.755	110.080	1.080	-3.068	73.175400	23.997896
							286.787815	151.100130
							135.687685	135.687685
							x _{1/2} = 67.843825	
							67.85	
	-151	-151.930		-37	-37.210			
14	981.086	1.086	+0.953	214.864	4.864	-0.957	4.635392	1.039302
11	932.351	2.351	+1.234	214.898	4.898	+1.033	6.044132	2.428593
12	932.320	2.320	-0.953	215.897	5.897	+0.957	5.619841	2.220240
13	981.398	1.398	-1.234	215.855	5.855	-1.033	7.225070	1.444134
							12.844911	-10.679524
							2.483036	4.648823
							2.165387	2.165387
							x _{1/2} = 1.0876935	
							1.09	

面積計算書

工
区

第2地区

ブ
ロ
ック

36

計
算
者



精
算
者



備
考

街路
泥工

点	①	②	③	④	⑤	⑥	③ × ⑤		② × ⑥	
	X	X-(定数)	X _{n-1} -X _{n+1}	Y	Y-(定数)	Y _{n-1} -Y _{n+1}	+	-	+	-
	-151	-151.860		-39	-39.080					
K2	868.580	8.580	+5.506	085.962	5.962	-106.976			22.826772	917.854089
K3	868.971	8.971	-4.716	086.008	6.008	+107.052			28.333728	960.363492
28	863.864	3.864	-5.506	193.014	113.014	+106.976			622.255084	413.355264
K.1	863.465	3.465	+4.716	192.984	112.984	-107.052			532.832544	370.935180
									650.588812	565.659316
									1288.789260	1373.718756
									84.929496	84.929496
									×1/2 = 42.464748	
									42.46	
	-151	-151.860		-39	-39.110					
17'	867.822	7.822	+67.851	110.080	0.080	+1.071			5.428080	8.377362
7	935.625	75.625	+67.771	112.149	2.149	+3.068			145.639879	232.017500
8	935.593	75.593	-67.851	113.148	3.148	-1.071			213.594948	80.960103
16'	867.774	7.774	-67.771	111.078	1.078	-3.068			73.057138	23.850632
									286.652086	154.067959
									104.810735	240.394862
									135.584127	
									×1/2 = 67.7920635	
									67.79	

計年月日
算日

計算者



検査者



B.NO. 36

各筆面積計算書

地番	算式	隅切	地積	摘要
1	69-1(A)		1,161.88	
2	47-1(A)		226.19	
3	88		1,091.90	
4	83-1(A)		1,071.08	
5	82-1(A)		798.30	
6	81-1(A)		1,180.92	
7	11-7		625.38	
8	11-4		1,941.90	
9	73-1		528.94	
			8,626.49	
	街路	42.46		
	水路第13号線	67.85		
	“ 15号線	1.09		
	泥上	67.99		
	区画街路第11号線 201	1.21		
		180.40		
		合計	8,806.89	
		全体	8,806.80	
			差 + 0.09	