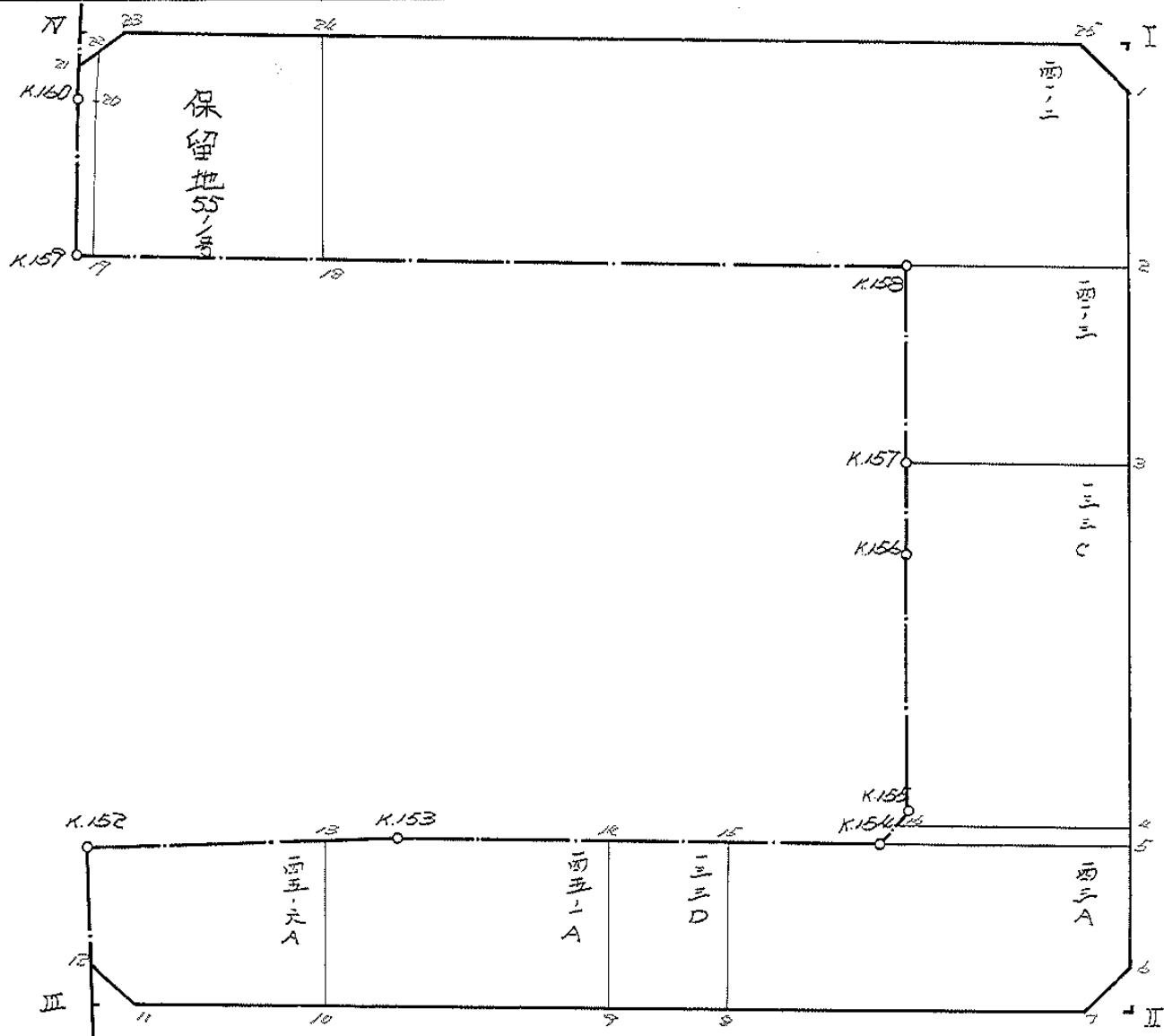


**BLOCK NO. 55**

画地略図	工区	沖2	ブロック	55	記入者	点検者
------	----	----	------	----	-----	-----



面積計算書							工区	和	ブロック	5	計算者	精算者	備考	合面積	2枚0/1	
点	①	②	③	④	⑤	⑥	+	-	+	-	+	-	+	-	+	-
	X	X-(定数)	X <sub>n-1</sub> -X <sub>n+1</sub>	Y	Y-(定数)	Y <sub>n-1</sub> -Y <sub>n+1</sub>										
	-152	-152.200		-37	-37.300											
1	227.630	27.630	+ 112.563	326.377	26.377	- 1.603							2258.762511	163.676890		
4	377.153	77.153	+ 112.730	326.757	26.757	+ 4.390							3016.316610		270.281670	
7	402.360	202.360	+ 8.260	327.787	27.787	+ 76.233							246.000620		15426.509880	
11	407.413	207.413	+ 2.334	402.990	102.990	+ 76.846							240.069690		15932.859376	
12	404.691	204.691	- 15.327	406.633	106.633	+ 6.427									1327.230517	
K.152	371.826	171.826	- 14.987	407.477	107.477	- 22.364									1291.338504	
K.153	387.702	187.702	- 4.442	382.267	82.267	- 52.035									11007.355570	
K.154	387.444	187.444	- 3.863	351.442	51.442	- 24.602									6427.061952	
K.155	385.837	185.837	- 35.598	347.661	47.661	- 2.236									47.252784	
K.156	351.846	151.846	- 47.224	347.186	47.186	- 1.074									166.119520	
K.157	336.615	136.615	- 34.361	348.567	48.567	- 1.117									152.572955	
K.158	317.485	117.485	- 18.374	348.067	48.067	+ 73.234									8576337490	
K.159	318.221	118.221	- 25.803	422.401	122.401	+ 77.146									93267.92666	
K.160	271.622	71.622	- 27.922	427.215	127.215	+ 5.222									434.310066	
21	222.237	22.237	- 6.375	427.687	127.687	- 2.117									126.201963	
23	225.307	25.307	- 1.647	425.078	125.078	- 97.327									2473.059003	
25	226.570	26.570	+ 4.323	328.360	28.360	- 77.701									122.600280	

# 面積計算書

工区

和

ブロック

55

計算者



精算者



備考

全面積

278.002

点	①	②	③	④	⑤	⑥	③ × ⑤		② × ⑥	
	X	X - (定数)	X <sub>n-1</sub> - X <sub>n+1</sub>	Y	Y - (定数)	Y <sub>n-1</sub> - Y <sub>n+1</sub>	+	-	+	-
							12604.47613	16083.78971	39962.77675	20830.02637
							12120.62790			12120.62790
									1/2 = 6060.31395	

# 画地計算

# 面積計算書

工区 甲2地区  
 ブロック 55  
 計算者 (三和測量建設株式会社)  
 精算者 (三和測量建設株式会社)  
 備考 141-2  
 保留地 55-1号

点	①	②	③	④	⑤	⑥	③	×	⑤	②	×	⑥
	X	X-(定数)	X <sub>n-1</sub> -X <sub>n+1</sub>	Y	Y-(定数)	Y <sub>n-1</sub> -Y <sub>n+1</sub>	+	-	-	+	-	-
1	-152 289.630	-152.280 9.630	+30.706	-3P 325.397	-3P.320 5.397	-2.619				165.720282		25.220970
2	317.296	37.296	+27.855	325.741	5.741	+22.672				159.915555		945.574912
K158	317.485	37.485	+0.705	348.069	28.069	+74.431				19.788645		2790.046035
18	318.001	38.001	-31.842	400.172	80.172	+57.682			252.836824			1963.967682
24	285.643	5.643	-31.411	399.751	99.751	-71.812			2505.058661			4405.235116
25	286.590	6.590	+3.987	328.360	8.360	-74.354				22.331320		489.992860
										6057.895495		378.755802
										920.448946		5599.588629
										4679.139683		4679.139683
										$\times \frac{1}{2} = 2339.5698415$		
26	-152 285.643	-152.280 5.643	+32.694	-3P 399.751	-3P.390 9.751	-24.926				318.799194		140.657418
18	318.001	38.001	+32.568	400.172	10.172	+21.636				331.281696		822.189636
19	318.211	38.211	-26.476	421.387	31.387	+26.055			831.002212			995.587605
20	291.525	11.525	-30.960	426.227	36.227	+5.429			1121.587920			62.569225
22	287.251	7.251	-6.218	426.816	36.816	-1.129			228.921888			8.186379
23	285.307	5.307	-1.608	425.098	35.098	-27.065			56.437594			142.633955
										2237.949604		650.080890
										292.477752		1880.346466
										1587.868714		1587.868714
										$\times \frac{1}{2} = 793.934357$		

# 面積計算書

工区

※2

ブロック

1255

計算者



精算者



備考

133 C

141-3

点	①	②	③	④	⑤	⑥	③ × ⑤	② × ⑥
	X	X-(定数)	X <sub>n-1</sub> -X <sub>n+1</sub>	Y	Y-(定数)	Y <sub>n-1</sub> -Y <sub>n+1</sub>	+	-
3	-152 336.959	-152.330 -6.959	+48.130	-39 325.985	-39.320 -5.985	+71.989		288.058050 / 153.021451
4	384.745	-54.745	+49.400	326.578	-6.578	+24.254		324.953200 / 1327.785230
16	386.359	-56.359	+1.094	350.239	-30.239	+23.083		33.081466 / 1300.934797
K.155	385.839	-55.839	-34.513	349.661	-29.661	-1.053	11023.690093	58.798467
K.156	351.846	-21.846	-49.224	349.186	-29.186	-1.094	11436.651664	23.899524
K.157	336.615	-6.615	-14.887	348.567	-28.567	-23.201	426.276929	153.474615
							2239.525970	2239.525970
							1/2 = 1119.762985	
2	-152 317.296	-152.310 7.296	+19.674	-39 325.701	-39.320 5.701	-22.624		111.800230 / 161.124860
3	336.959	26.959	+19.319	325.985	5.985	+22.826		115.624215 / 65.366130
K.157	336.615	26.615	-19.674	328.567	28.567	+22.024	556.313752	527.765660
K.158	317.685	7.685	-19.319	328.069	28.069	-22.826	542.265011	170.232601
							1092.578767	227.424469 / 331.977474 / 203.121790
							871.154320	871.154320
							1/2 = 425.577160	

# 面積計算書

工  
区

ブ  
ロ  
ック

55

計  
算  
者



精  
算  
者



備  
考

123A

133D

点	①	②	③	④	⑤	⑥	③	×	⑤	②	×	⑥	
	X	X-(定数)	X <sub>n-1</sub> -X <sub>n+1</sub>	Y	Y-(定数)	Y <sub>n-1</sub> -Y <sub>n+1</sub>	+		-	+		-	
5	<sup>-152</sup> 385.748	<sup>-152.380</sup> 5.748	+11.709	<sup>-39</sup> 326.590	<sup>-39.320</sup> 6.590	-24.685			77.162310	141.889380			
6	399.153	19.153	+16.612	326.757	6.757	+3.197			112.247284			61.232141	
7	402.360	22.360	+5.287	329.787	9.787	+33.173			51.743869			741.748280	
8	404.440	24.440	-14.252	359.930	39.930	+31.305			569.082360			765.094200	
15	388.108	8.108	-16.996	361.092	41.092	-8.488			698.399632			68.820704	
K.154	387.444	7.444	-2.360	351.442	31.442	-34.502			74.203120			256.832888	
									1341.685112	241.153463		467.542972	1568.074621
									1100.531649				1100.531649
									1/2 = 550.2658245				
15	<sup>-152</sup> 388.108	<sup>-152.380</sup> 8.108	+15.908	<sup>-39</sup> 361.092	<sup>-39.350</sup> 11.092	-7.328			176.451536	59.415424			
8	404.440	24.440	+16.759	359.930	9.936	+5.012			166.517424			122.493280	
9	404.867	24.867	-15.908	366.104	16.104	+7.328			256.182432			182.225376	
14	388.532	8.532	-16.759	367.264	17.264	-5.012			289.327376			42.762384	
									545.509808	342.968960		102.177808	304.718656
									202.540848				202.540848
									1/2 = 101.270424				



# 面積計算書

工区

※2

ブロック

55

計算者

計算者

備考

165-6A

145-1A

点	①	②	③	④	⑤	⑥	③ × ⑤	② × ⑥
	X	X-(定数)	X <sub>n-1</sub> -X <sub>n+1</sub>	Y	Y-(定数)	Y <sub>n-1</sub> -Y <sub>n+1</sub>	+	-
10	-152 406.324	-152.370 16.324	+17.357	387.213	-37.380 7.213	+14.632	125.17604	238.25276
11	407.413	17.413	-1.633	402.990	22.990	+17.420	37.542670	338.160460
12	404.691	14.691	-15.527	406.633	26.633	+6.487	413.530571	75.300517
K152	391.886	1.886	-14.635	407.477	27.477	-12.275	443.1295895	34.466650
13	390.056	0.056	+14.438	388.358	8.358	-22.264	120.672804	124.6784
							882.467156	245.868845
							636.600311	672.313745
								636.600311
								1/2 = 318.3001355
14	-152 388.532	-152.380 8.532	+16.165	367.264	-37.360 7.264	-18.165	110.152660	154.993780
9	404.867	24.867	+17.792	366.104	6.104	+17.949	108.602368	476.071783
10	406.324	26.324	-14.811	387.213	27.213	+22.254	403.051743	525.814296
13	390.056	10.056	-16.622	388.358	28.358	-2.944	417.366676	29.602864
K153	387.702	7.702	-1.524	384.257	24.257	-21.094	36.995756	204.653922
							911.404375	718.760922
							672.643447	389.242632
								1021.886071
								672.643447
								1/2 = 306.3217035

# 面積計算書

工区

沖2

ブロック

35

計算者



精算者



備考

泥上.

水路19号線.

点	①	②	③	④	⑤	⑥	③ × ⑤		② × ⑥	
	X	X-(定数)	X <sub>n-1</sub> -X <sub>n+1</sub>	Y	Y-(定数)	Y <sub>n-1</sub> -Y <sub>n+1</sub>	+	-	+	-
	-142.	-150.280		-37.	-39.420					
22	287.2511	7.2511	+ 3.2864	426.816"	6.216"	- 1.062	22.3973764		10.600962	
20	291.325"	11.525"	+ 30.9604	426.227"	6.227"	- 5.429	192.7279204		62.5692254	
19	318.211"	38.211"	+ 26.6964	421.227"	1.227"	- 3.8264	37.02735284		106.1952264	
K.159	318.221"	38.221"	- 26.5294	422.401"	2.401"	+ 5.8224	63.6961294			222.7519824
K.160	291.682"	11.582"	- 29.9824	427.215"	7.215"	- 5.2884	216.3201204			61.7744164
21	288.239"	8.239"	- 4.4214	427.689"	7.689"	- 0.3994	30.0599594			3.2273614
							216.086218	252.2412642	222.652834	224.226404
							61.873570			61.873570
									1/2 = 30.9367854	
4	-152.	-152.320		-39.	-39.320					
	384.705"	6.705"	- 0.6114	326.572"	0.572"	- 22.6494	0.3231584		112.2145254	
5	325.748"	5.748"	+ 2.6994	326.590"	0.590"	+ 24.8644			159.4104	142.9122724
K.154	327.444"	7.444"	+ 0.6114	351.442"	25.442"	+ 23.6494			15.3252624	176.0431564
16	386.359"	6.359"	- 2.6994	350.239"	24.239"	- 24.8644			12.1101764	
							15.772219	17.137472	270.324621	312.961422
							42.636747			42.636747
									1/2 = 24.3123735	

計年  
月  
算日

計  
算  
者



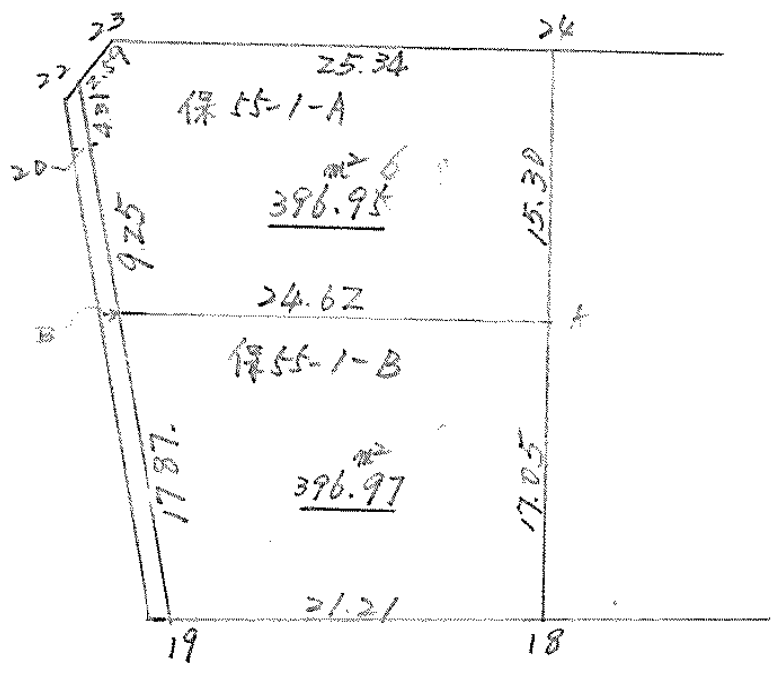
檢  
查  
者



B.NO. 55

各筆面積計算書

地番	算式	間切	地積	摘要
1	保留地 55-1局		793.93	
2	141-2		2337.66	
3	141-3		435.57	
4	133 C		1119.76	
5	143 A		630.26	
6	133 D		101.27	
7	145-1 A		346.32	
8	145-6 A		318.30	
	道路敷 (泥土)	30.93		
	水路 19号線	24.31		
		合計	6060.21	
		全体	6060.31	
			-0.10	
	換地面積		5211.04	7
	保留地面積		793.93	
	公共用地		55.24	
		合計	6060.21	



# 面積計算書

工  
区

ブ  
ロ  
ック

55

計  
算  
者



精  
算  
者

備  
考

㊦保 55-1-A

㊦保 55-1-B

点	①	②	③	④	⑤	⑥	③ × ⑤		② × ⑥	
	X	X-(定数)	X <sub>n-1</sub> -X <sub>n+1</sub>	Y	Y-(定数)	Y <sub>n-1</sub> -Y <sub>n+1</sub>	+	-	+	-
(-) 24	-152, 285.643	-152,280- 5.643	+ 15.636	-39, 399.751	-39,390- 9.751	- 25.148			152.466636	141.910.164
A	300.943	20.943	+ 14.980	399.950	9.950	+ 24.826			149.051.000	519.930918
B	300.623	20.623	- 9.418	424.577	34.577	+ 26.277	325.646186			541.910.571
26	291.525	11.525	- 13.372	426.227	36.227	+ 2.239	424.427424			25.804.475
22	287.251	7.251	- 6.218	426.816	36.816	- 1.129	220.921888			8.186.379
23	285.307	5.307	- 1.608	425.098	35.098	- 27.065	56.437584			103.633955
									1095.433102	301.517636
									293.730498	1087.645964
									793.915466	793.915466
									$\times \frac{1}{2} = 396.957733$	
									戻換 = 376.96	
(+) A	-152, 300.943	-152,300- 0.943	+ 17.378	-39, 399.950	-39,390- 9.950	- 24.405			172.911100	23.013915
18	318.001	18.001	+ 17.268	400.172	10.172	+ 21.437			175.650096	385.887437
19	318.211	18.211	- 17.378	421.387	31.387	+ 24.405	545.443286			444.439455
B	300.623	0.623	- 17.268	424.577	34.577	- 21.437	597.075636			13.355251
									1142.518922	348.561196
									36.369166	830.326892
									793.957726	793.957726
									$\times \frac{1}{2} = 396.978863$	