

BLOCK NO. 43-2

面積計算書

工
区

第2

ブ
ロ
ック

43-2

計
算
者



精
算
者



備
考

全体

70.1

点	①	②	③	④	⑤	⑥	③	×	⑤	②	×	⑥	
	X	X-(定数)	X _{n-1} -X _{n+1}	Y	Y-(定数)	Y _{n-1} -Y _{n+1}	+		-	+		-	
I	-152 397.546	-152.380 9.546	-37 23.358	-37 176.028	-37.100 76.028	-26.213						1775.862026	250.229298
K.122	412.366	32.566	22.906	176.546	76.546	3.013						1753.362676	92.121352
K.123	412.452	32.452	1.627	177.041	77.041	1.711						128.599707	62.015772
K.124	414.173	34.173	4.804	178.457	78.457	2.611						376.907428	89.277923
K.125	417.256	37.256	4.173	181.652	81.652	8.181						340.733796	306.791336
K.126	418.366	38.366	0.321	186.638	86.638	28.797						27.810792	1104.825702
K.127	417.577	37.577	0.925	210.447	110.447	38.103	102.165325						1433.299514
K.128	417.441	37.441	1.518	222.781	122.781	35.036	189.467558						1311.782876
K.129	416.059	36.059	3.174	245.485	145.485	27.760	461.769390						1001.102076
K.130	414.267	34.267	5.747	252.545	152.545	18.237	1876.676115						624.927299
K.131	410.312	30.312	4.592	263.722	163.722	17.100	1752.793756						318.335200
K.132	407.669	29.669	5.974	267.645	167.645	9.386		10.13059230					278.473230
K.133	416.286	36.286	26.467	273.108	173.108	4.782		0581.609636					170.519652
K.134	436.136	56.136	19.409	274.427	174.427	20.741		3387.197913					1164.316776
K.136	435.705	55.705	1.682	293.849	193.849	32.409	326.054018						1808.128595
K.137	434.454	54.454	6.870	306.884	206.884	28.259	1007.534820						1538.815286
K.138	430.835	50.835	7.693	322.108	222.108	24.831	1708.676200						1262.283825

面積計算書

工区

※2

ブロック

47-2

計算者

計算者

備考

全帳

大02

点	①	②	③	④	⑤	⑥	③ × ⑤		② × ⑥	
	X	X-(定数)	X _{n-1} -X _{n+1}	Y	Y-(定数)	Y _{n-1} -Y _{n+1}	+	-	+	-
K139	^{-152.} 426.761	46.761	-4.168	^{-39.} 331.717	231.717	14.047	965.776456			656.851767
K140	426.667	46.667	+2.437	336.155	236.155	+20.606		575.587735		961.620202
K141	429.198	49.198	+4.267	352.323	252.323	+15.995		1076.914564		1786.922012
K142	430.935	50.935	+2.437	352.150	252.150	+10.333		614.741700		528.758105
K143	431.636	51.636	+2.744	362.706	262.706	+15.096		720.765264		777.497656
K144	433.679	53.679	+4.701	367.246	267.246	+6.462		1256.323464		746.873697
K145	436.337	56.337	+8.766	369.168	269.168	+7.533		2359.526686		149.038.62
K146	442.445	62.445	+9.336	370.779	270.779	+3.971		2527.992744		247.969095
K147	445.673	65.673	+4.309	373.139	273.139	+6.747		1176.95588		406.975571
K148	446.754	66.754	+0.408	376.976	276.976	+12.786		113.006208		853.516644
K149	446.081	66.081	+0.571	385.925	285.925	+13.819		163.263175		913.107258
K150	447.325	67.325	+4.002	390.794	290.794	+10.627		1163.757870		715.462705
K151	450.083	70.083	-30.847	396.552	296.552	+13.222	9147.036096			926.637426
10	416.477	36.477	-36.742	404.016	304.016	+5.121	1170.557772			186.778717
11	413.341	33.341	-7.723	401.673	301.673	-83.151	2631.493519		2772.337491	
12	407.754	27.754	-17.776	370.865	220.865	-80.964	4146.961240		2247.269134	
15	394.565	14.565	-16.147	320.702	220.702	-3.199	7513.895896		46.193435	

画地計算

面積計算書

工区

第2

ブロック

43-2

計算者



精算者



備考

136-2 (2)

点	①	②	③	④	⑤	⑥	③ × ⑤		② × ⑥	
	X	X-(定数)	X _{n-1} -X _{n+1}	Y	Y-(定数)	Y _{n-1} -Y _{n+1}	+	-	+	-
23	⁻¹⁵² 394,172	^{-152,300} 94,172	+23,990	⁻³⁹ 203,824	^{-39,200} 3,824	-27,328			91,737,760	2,573,532,416
1	417,786	117,786	+23,405	204,145	4,145	+6,625			97,013,725	780,332,250
K-127	417,577	117,577	+0,345	210,449	10,449	+20,636	-3,604,905			2426,318,972
K-128	417,441	117,441	+0,604	224,781	24,781	+21,340	-14,967,724			2,506,190,940
2	416,973	116,973	+23,645	231,789	31,789	+6,692	-751,650,905			782,783,316
24	393,796	93,796	+22,801	231,473	31,473	+27,965	-717,615,873			2623,005,140
									1487,839,407	188,751,485,519
									1299,087,922	1299,087,922
									1/2 = 649,543,961	

面積計算書

工区

A2

ブロック

43-2

計算者



精算者



備考

7/10 B (3)

点	①	②	③	④	⑤	⑥	③ × ⑤		② × ⑥	
	X	X-(定数)	X _{n-1} -X _{n+1}	Y	Y-(定数)	Y _{n-1} -Y _{n+1}	+	-	+	-
	-152,	-152.700		-39,	-39.200					
24	393.796 ✓	93.796 ✓	+ 23.709 ✓	231.473 ✓	31.473 ✓	38.788 ✓		746.193357 ✓	3678.159248 ✓	
2	416.973 ✓	116.973 ✓	+ 22.263 ✓	231.789 ✓	31.789 ✓	14.012 ✓		709.718507 ✓		1679.025676 ✓
K.129	416.059 ✓	46.059 ✓	- 2.706 ✓	245.485 ✓	45.485 ✓	+ 20.756 ✓	127.082410 ✓			2407.920604 ✓
K.130	414.267 ✓	14.267 ✓	- 5.747 ✓	252.545 ✓	52.545 ✓	+ 18.237 ✓	301.976115 ✓			2083.789279 ✓
K.131	410.312 ✓	10.312 ✓	- 4.697 ✓	263.722 ✓	63.722 ✓	+ 17.100 ✓	292.993766 ✓			1886.335200 ✓
K.132	409.669 ✓	109.669 ✓	+ 3.783 ✓	269.645 ✓	69.645 ✓	+ 8.239 ✓		263.469035 ✓		903.562891 ✓
3	414.095 ✓	114.095 ✓	- 16.405 ✓	271.961 ✓	71.961 ✓	+ 0.932 ✓	1180.520205 ✓			106.336540 ✓
25	393.264 ✓	93.264 ✓	- 20.299 ✓	270.577 ✓	70.577 ✓	- 40.488 ✓	1432.642523 ✓		3776.072832 ✓	
							3331.215009 ✓	1717.378899 ✓	744.232080 ✓	7028.068190 ✓
							1613.836110 ✓			1613.836110 ✓
										1/2 = 806.91 ✓

面積計算書

工区

カ2

ブロック

13-2

計算者



計算者



備考

5) 142B

点	①	②	③	④	⑤	⑥	③ × ⑤		② × ⑥				
	X	X-(定数)	X _{n-1} -X _{n+1}	Y	Y-(定数)	Y _{n-1} -Y _{n+1}	+	-	+	-			
	-154	-152.370		-37	-37.270								
16	373.555	3.555	-37.686	37.666	27.665	2.520	177.324	876	8.752	600 ✓			
17	371.606	1.606	1.677	317.665	27.665	20.400	17.004	534	32.762	400 ✓			
18	371.256	1.256	13.523	277.266	7.266	17.811			102.294	1833.057	216 ✓		
5	425.127	45.127	42.578	277.885	7.885	7.620			117.803	270	342.882	720 ✓	
K137	434.454	44.454	3.837	306.886	16.886	20.331	64.771	392			702.774	274 ✓	
6	431.272	41.272	40.877	320.186	30.186	12.720	1234.377	214			327.711	760 ✓	
							2523.678	206	1223.027	108.574	1778.216	1775.397	014 ✓
							1700.610	72			1700.610	72 ✓	
									1/2 = 250.305		377 ✓		

面積計算書

工区

カ2

ブロック

113-2

計算者

精算者

備考

(6) 143B

点	①	②	③	④	⑤	⑥	③ × ⑤		② × ⑥	
	X	X-(定数)	X _{n-1} -X _{n+1}	Y	Y-(定数)	Y _{n-1} -Y _{n+1}	+	-	+	-
	-162,	-152,1170.000		-37,	-39,300.000					
13	110.150	10.150	-23.240	335.519	55.519	32.205	6290.261560			376.880750
14	107.823	7.823	+20.653	321.862	21.868	-33.336		451.639800		260.787528
7	130.803	30.803	+18.938	322.183	22.183	+9.849		440.101650		303.378747
K137	126.761	26.761	-4.136	331.717	31.717	+13.972	131.181512			373.904692
K140	126.667	26.667	+7.437	336.165	36.165	+20.606		88.109735		529.500202
K141	127.198	27.198	+4.268	352.323	52.323	+15.995		273.314560		467.072010
K142	130.935	30.935	+1.865	352.150	52.150	+1.750		97.259750		54.136750
8	131.063	31.063	-20.785	354.073	54.073	+3.369	1,123.907305			104.651247
							7,545.350377	1,280.122597	587.668278	1,852.593148
							1,264.924070			1,264.924070
										1/2 = 632.462035

面積計算書

工区

※2

ブロック

13-2

計算者

精算者

備考

17) 145-1B

点	①	②	③	④	⑤	⑥	③ × ⑤	② × ⑥
	X	X-(定数)	X _{n-1} -X _{n+1}	Y	Y-(定数)	Y _{n-1} -Y _{n+1}	+ -	+ -
12	-132.400	-132.400	-35.945	-37.064	-37.330	-38.064	-30.215	1268.210480
13	410.150	0.150	18.663	355.519	5.519	-33.971	103.001077	3.078650
8	131.063	21.063	21.186	354.073	4.073	7.187	87.512478	151.377781
K.143	121.636	21.636	2.616	362.706	12.706	13.173	33.232276	285.011022
K.144	123.679	23.679	4.701	367.246	17.246	6.462	81.073416	183.013678
K.145	126.337	26.337	8.766	369.168	17.168	3.533	162.026688	72.042621
K.146	142.445	32.445	9.336	370.779	20.779	3.971	173.972741	128.837075
K.147	145.673	35.673	4.307	373.139	23.139	6.177	97.725751	221.065521
K.148	145.754	36.754	0.422	376.976	26.976	12.575	11.323272	452.916630
7	446.075	36.075	30.234	385.734	35.734	11.088	227.405936	400.221360
							2576.816316	577.935172
							77.614650	1975.475714
							1817.821144	1817.821144
							1/2 = 908.910572	

面積計算書

工区

第2

ブロック

43-2

計算者

精算者



備考

(15) 145-6 B

点	①	②	③	④	⑤	⑥	③ × ⑤		② × ⑥	
	X	X-(定数)	X _{n-1} -X _{n+1}	Y	Y-(定数)	Y _{n-1} -Y _{n+1}	+	-	+	-
	-152	-152.410		-37	-37.330					
10	416.477	6.477	-36.742	404.016	24.016	+ 3.121	1,882.37572			33.162717
11	413.341	3.341	4.077	401.673	21.673	13.752	883.60821			53.275632
12	412.400	2.400	32.734	382.064	2.064	15.737		264.123255		38.253600
9	446.075	36.075	33.621	385.724	5.724	2.137		173.126254		177.207205
K.147	446.021	36.021	1.230	385.725	5.725	5.060		7.227750		182.567960
K.150	447.325	37.325	4.002	370.774	10.774	+ 10.627		13.175228		396.652775
K.151	400.083	40.083	-30.849	376.552	15.352	+ 13.222		310.576076		529.777425
								1121.352727		1307.7410412
								162.756423		11.62.362776
								973.612341		973.612341
										1/2 = 486.8061705

面積計算書

工区

ホ2

ブロック

43-2

計算者

精算者

備考

泥上 401.

点	①	②	③	④	⑤	⑥	③ × ⑤		② × ⑥	
	X	X-(定数)	$X_{n-1}-X_{n+1}$	Y	Y-(定数)	$Y_{n-1}-Y_{n+1}$	+	-	+	-
	-152	-152,370		-37	-37,270					
25	373.264	3.264	20.844	270.577	1.577	0.394		12.026788		1.253376
3	414.074	24.074	23.022	271.761	1.761	2.531		43.126142		30.791712
K133	416.226	26.226	20.844	273.108	2.108	0.394	64.793152		10.073224	
26	373.250	3.250	23.022	271.577	1.577	2.531	36.305674		8.225750	
							101.028246	57.173136	12.317574	62.235270
							43.715716			43.715716
									1/2 = 21.757858	

面積計算書

工区

※2

ブロック

43-2

計算者



計算者



備考

水路第12号線、
港上 402

点	①	②	③	④	⑤	⑥	③ × ⑤		② × ⑥	
	X	X-(定数)	X _{n-1} -X _{n+1}	Y	Y-(定数)	Y _{n-1} -Y _{n+1}	+	-	+	-
	-152	-152.570		-37	-37.310					
6	431.272	41.272	+ 37.477	320.126	10.126	+ 1.520		391.764	814	62.763
7	431.054	41.054	- 23.532	321.126	11.126	+ 0.679	263.276	62		27.275
II	407.754	17.754	- 36.489	320.265	10.265	- 0.484	376.452	725		2.372
15	374.565	4.565	- 14.179	320.702	10.702	+ 1.179	151.757	672		5.473
16	373.555	3.555	+ 26.727	319.666	9.666	- 0.516		335.043	182	1.834
								211.706	751	1736.767
										16.700
										70.637
										74.739
										74.739
										1/2 = 37.369
										23.11
										水路第12号線 62.53
14	-152	-152.400		-37	-37.320					
	407.823	7.823	- 23.027	321.262	1.262	- 1.318	43.045	532		10.310
II	407.754	7.754	+ 23.231	320.265	0.265	- 0.622		20.074	815	15.228
7	431.054	31.054	+ 23.681	321.126	1.126	+ 1.243		27.274	066	32.600
K138	430.835	30.835	- 0.251	322.102	2.102	+ 0.977		0.327	102	30.742
7'	430.803	30.803	+ 23.012	322.123	2.123	- 0.240		30.235	176	7.372
										73.217
										47.462
										22.771
										67.342
										46.350
										46.350
										1/2 = 23.175

面積計算書

工区

水2

ブロック

43-2

計算者

計算者

備考

水路米15号線

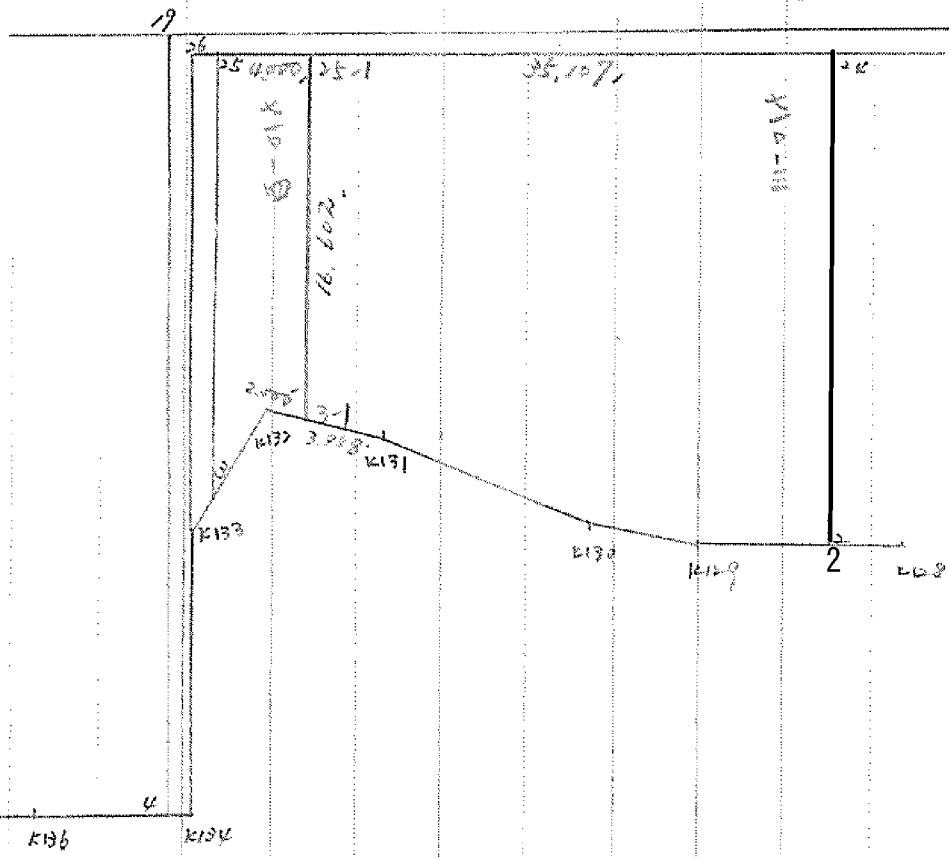
点	①	②	③	④	⑤	⑥	③ × ⑤		② × ⑥	
	X	X-(定数)	Xn-1-Xn+1	Y	Y-(定数)	Yn-1-Yn+1	+	-	+	-
21	-152、 390.198 ✓	-152.300- 90.198 ✓	2.990 ✓	-39、 203.778 ✓	-39.200- 3.778 ✓	0.967 ✓		11.296220 ✓	79.221466 ✓	
23	394.172 ✓	94.172 ✓	3.052 ✓	203.824 ✓	3.824 ✓	69.999 ✓		11.670348 ✓	6384.787438 ✓	
26	393.250 ✓	93.250 ✓	22.114 ✓	271.577 ✓	71.577 ✓	69.284 ✓		1572.853778 ✓	6460.733000 ✓	
K.133	416.286 ✓	116.286 ✓	42.886 ✓	273.108 ✓	73.108 ✓	2.850 ✓		3135.309688 ✓	331.415100 ✓	
K.134	436.136 ✓	136.136 ✓	19.827 ✓	274.427 ✓	74.427 ✓	2.343 ✓		1495.664129 ✓	319.966648 ✓	
4	436.113 ✓	136.113 ✓	43.916 ✓	275.451 ✓	75.451 ✓	1.893 ✓	3313.506116 ✓		257.661909 ✓	
19	392.220 ✓	92.220 ✓	42.971 ✓	272.594 ✓	72.594 ✓	70.628 ✓	3116.858514 ✓		6513.314160 ✓	
▽	393.142 ✓	93.142 ✓	1.038 ✓	204.823 ✓	4.823 ✓	67.743 ✓	5.006274 ✓		6309.718506 ✓	
20	391.182 ✓	91.182 ✓	2.944 ✓	204.791 ✓	4.791 ✓	1.045 ✓	14.104704 ✓		95.285190 ✓	
								6449.475608 ✓	6216.794663 ✓	13263.201231 ✓
								232.680945 ✓		232.680945 ✓
								1/2 = 116.34 ✓		
								+ 21.95		
								水路米15号線		138.29

計年 月 算日	計 算 者	檢 查 者
---------------	-------------	-------------

*2
B.NO. 43-2

各筆面積計算書

地番	算式	隅切	地積	摘要
1	133B		772.37	✓
2	136-2		627.54	✓
3	710B		806.91	✓
4	137B		1117.58	✓
5	142B		850.30	✓
6	143B		632.46	✓
7	145-1B		708.74	✓
8	145-6B		426.80	✓ 8筆
			6226.90	✓
9	水路第12号系取	60.53 37.36		✓
10	水路第15号系取	138.29 116.34		✓
11	泥上 物1	21.75		✓
12	泥上 物2	23.17		✓
		198.82		✓
		合計	6425.72	✓
		全体	6425.76	✓
		差	- 0.04	✓
	換地面積		6226.90	✓ 8筆
	公共用地		198.82	✓
		合計	6425.72	✓



面積計算書

工
K

フ
ロ
ック

43-2

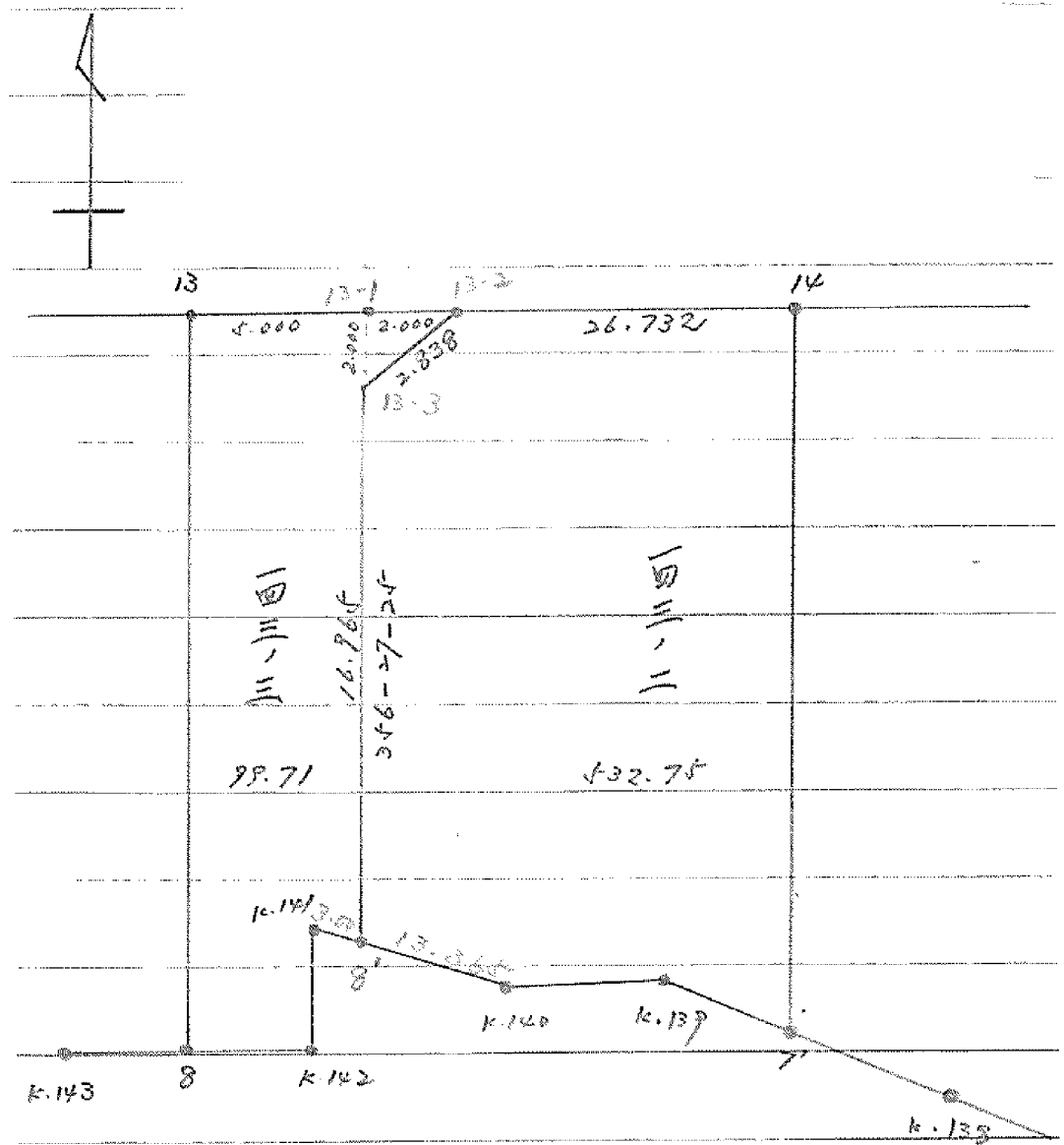
計算者

結算者

備
考

710-3

点	①	②	③	④	⑤	⑥	⑦	⑧	⑨	⑩
	X	X - (定数)	X _{n-1} - X _{n+1}	Y	Y - (定数)	Y _{n-1} - Y _{n+1}	+	-	+	-
	-182,	-182,390.0		-39,	-39,330.0					
24	393.796	3.796	+ 23.655	231.473	1.473	- 34.788		34.843815	132.055248	
2	416.973	26.973	+ 22.263	231.789	1.789	+ 14.012		39.828507		277.945676
k.129	416.059	26.059	- 2.706	245.485	15.485	+ 20.756	41.902410			540.820604
k.130	414.267	24.267	- 5.747	252.545	22.545	+ 18.237	129.566115			442.557279
k.131	410.312	20.312	- 4.382	263.722	33.722	+ 15.112	147.769804			306.954944
3-1	409.885	19.885	- 16.994	267.657	37.657	+ 2.855	639.943058			56.771675
24-1	393.318	3.318	- 16.089	266.577	36.577	- 36.184	588.487353		120.058512	
							1547.668740	74.672322	252.113760	1725.110178
							1472.996418			1472.996418
									$\frac{1}{2} = 736.498209$	



面積計算書

工
区

ブ
ロ
ック

計
算
者

精
算
者

備
考

143-3

点	①	②	③	④	⑤	⑥	⑦	⑧	⑨	⑩
	X	X - (定数)	X _{n-1} - X _{n+1}	Y	Y - (定数)	Y _{n-1} - Y _{n+1}	+	-	+	-
13-2	409.667	9.667	+1.651	348.536	8.536	-5.112		14.092936		49.417704
13-3	411.801	11.801	+19.067	350.407	10.407	+0.823		198.430269		9.712223
8'	428.734	28.734	+17.397	349.359	9.359	+1.916		162.818523		55.054344
K.141	429.198	29.198	+2.201	352.323	12.323	+2.791		27.122923		81.491618
K.142	430.935	30.935	+1.265	352.150	12.150	+1.750		22.659750		54.136250
8	431.063	31.063	-20.785	354.073	14.073	+3.369	292.507305			104.651247
13	410.150	10.150	-21.396	355.519	15.519	-5.537	332.044524		56.200550	
							624.551829	425.124401	105.618254	305.045682
							199.427428			199.427428
										1/2 = 99.713714

面積計算書

工区

ブロック

43-2

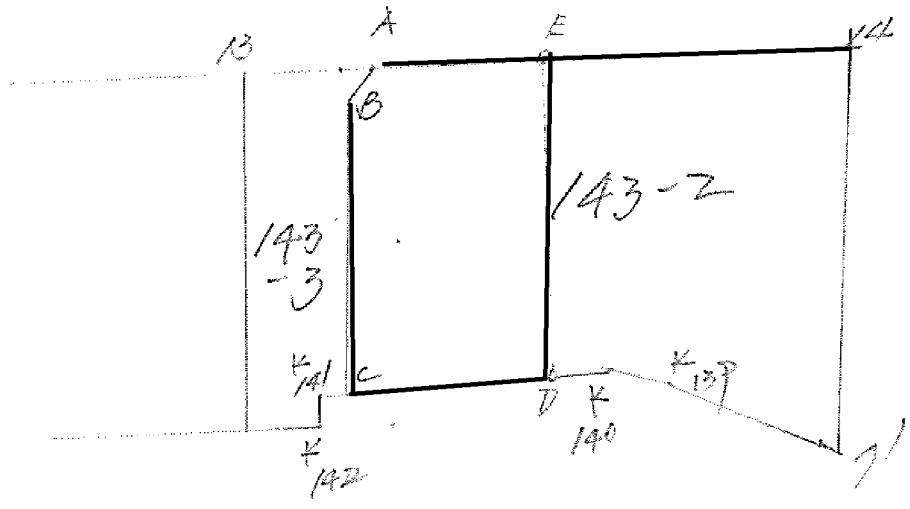
計算者

精算者

備考

143-2

点	①	②	③	④	⑤	⑥	+	-	②	+	⑥
	X	X - (定数)	X _{n-1} - X _{n+1}	Y	Y - (定数)	Y _{n-1} - Y _{n+1}			-		-
	-152,	-152,400.0		-39,	-39,320.0						
14	407.823	7.823	+21.136	321.868	1.868	-26.343			39,482,048		206,159,519
7'	430.803	30.803	+18.938	322.183	2.183	+9.849			41,341,644		303,378,747
K-139	426.761	26.761	-4.136	331.717	11.717	+13.972	48,461,512				373,904,692
K-140	426.667	26.667	+1.973	336.154	16.154	+17.642		31,873,815			470,449,214
8'	428.734	28.734	-14.866	349.249	29.249	+14.242	436,440,894				409,516,968
13-3	411.801	11.801	-19.867	350.407	30.407	-0.823	479,770,269		9,712,223		
13-2	409.667	9.667	-3.978	348.436	28.436	-28.439	113,516,208		275,886,413		
							1178,198,883	112,697,517	491,758,254	1557,249,621	
							1065,401,366				1065,401,366
											1/2 = 432,740,683



A	6.941	-152	409.667'	-39	348.535'		1340443.0213	
B	2.838		411.801'		350.406'		125587.3240	
C	16.965		428.734'		349.359'	1531756.3980		
D	9.112		427.325'		340.357'	1181006.9142		
E	18.180	-152	409.188'	-39	341.611'		1246902.3395	
<hr/>							330.5773	
							<u>165.28865 m²</u>	
							<u>50.000 坪</u>	

