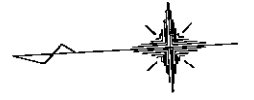
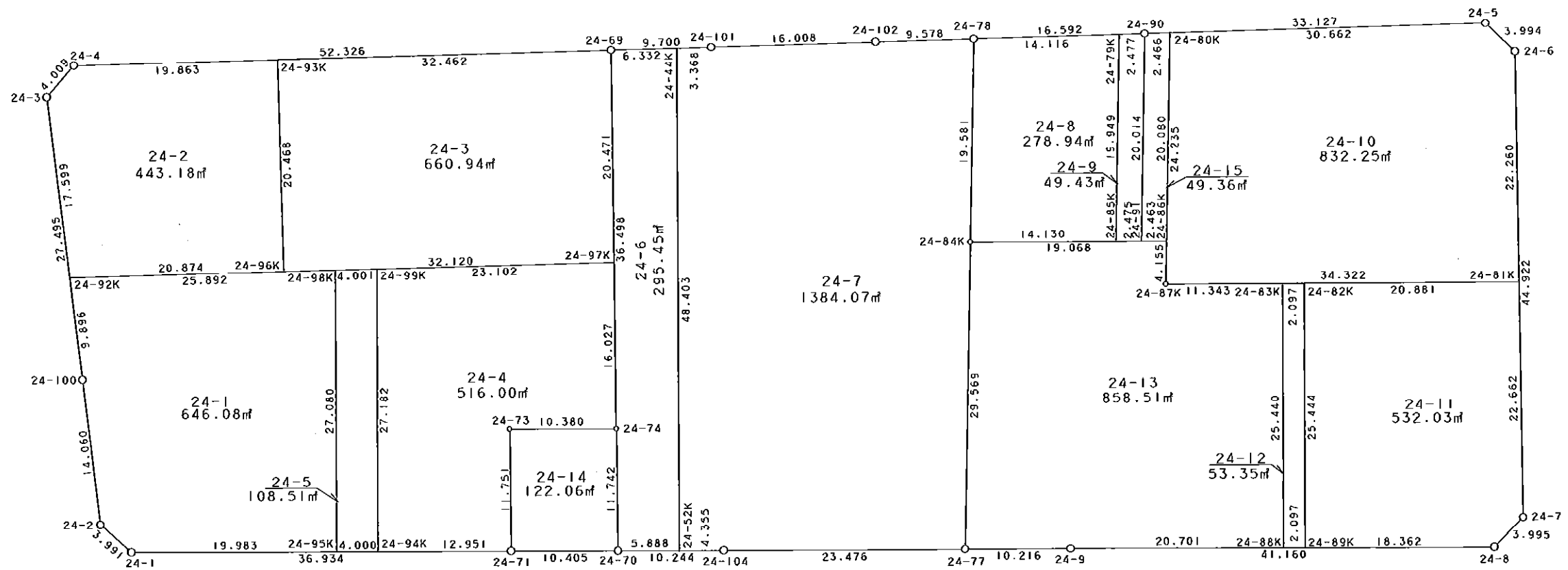


西部第5地区土地区画整理事業 出来形確認測量 (原子図)

24街区



S = 1 / 500



凡 例

記号	名称
⊙	地区界点
○	街区点
○	画地点(折れ点)
┆	画地点(直線中)

地番	筆種別	面積	坪数
24-1	筆界	646.08	195.44
24-2	筆界	443.18	134.06
24-3	筆界	660.94	199.93
24-4	筆界	516.00	156.09
24-5	筆界	108.51	32.82
24-6	筆界	295.45	89.37
24-7	筆界	1384.07	418.68
24-8	筆界	278.94	84.38
24-9	筆界	49.43	14.95
24-10	筆界	832.25	251.75
24-11	筆界	532.03	160.94
24-12	筆界	53.35	16.13
24-13	筆界	858.51	259.69
24-14	筆界	122.06	36.92
24-15	筆界	49.36	14.93
	筆合	6830.16	2066.08

面積 (座標法) 計算書

地番 = 24-1
測点名

	[1] X (i)	[2] X (i+1)-X (i-1)	[3] Y (i)	[4] Y (i+1)-Y (i-1)	[2] * [3]	[1] * [4]	方向角	夾角	距離
24-98K	-149935.721	24.577	-41467.480	27.637	-1019146.255960	-4143773.521277	1-18-13	88-32-06	25.892
24-92K	-149909.836	25.153	-41466.891	-9.280	-1043016.709323	1391163.278080	265-45-29	84-27-16	9.896
24-100	-149910.568	-1.754	-41476.760	-23.892	72750.237040	3581663.290656	265-49-54	180-04-25	14.060
24-2	-149911.590	-3.885	-41490.783	-16.803	161191.691955	2518964.446770	224-09-26	138-19-32	3.991
24-1	-149914.453	-22.823	-41493.563	-3.745	947007.588349	561429.626485	182-46-04	138-36-38	19.983
24-95K	-149934.413	-21.268	-41494.528	26.083	882505.621504	-3910739.294279	92-46-07	90-00-03	27.080
合計				倍面積 面積	1292.173565 646.08	-1292.173565 646.08			100.902

面積 (座標法) 計算書

地番 = 24-2
測点名

	[1] X (i)	[2] X (i+1)-X (i-1)	[3] Y (i)	[4] Y (i+1)-Y (i-1)	[2] * [3]	[1] * [4]	方向角	夾角	距離
24-93K	-149931.170	19.393	-41446.903	20.915	-803779.789879	-3135810.420550	1-18-14	90-00-08	19.863
24-4	-149911.312	22.637	-41446.451	-2.437	-938223.311287	365333.867344	313-53-17	132-35-03	4.009
24-3	-149908.533	1.476	-41449.340	-20.440	-61179.225840	3064130.414520	265-45-15	131-51-58	17.599
24-92K	-149909.836	-22.172	-41466.891	-18.026	919403.907252	2702274.703736	181-18-14	95-32-59	20.874
24-96K	-149930.705	-21.334	-41467.366	19.988	884664.786244	-2996814.931540	91-18-06	89-59-52	20.468
合計				倍面積 面積	886.366490 443.18	-886.366490 443.18			82.813

面積 (座標法) 計算書

地番 = 24-3
測点名

	[1] X (i)	[2] X (i+1)-X (i-1)	[3] Y (i)	[4] Y (i+1)-Y (i-1)	[2] * [3]	[1] * [4]	方向角	夾角	距離
24-96K	-149930.705	-31.647	-41467.366	-21.194	1312317.731802	3177631.361770	181-18-15	90-00-09	32.120
24-97K	-149962.817	-32.919	-41468.097	19.724	1365088.285143	-2957866.602508	92-15-33	90-57-18	20.471
24-69	-149963.624	31.647	-41447.642	21.194	-1311693.526374	-3178329.047056	1-18-16	89-02-43	32.462
24-93K	-149931.170	32.919	-41446.903	-19.724	-1364390.599857	2957242.397080	271-18-06	89-59-50	20.468
合計				倍面積 面積	1321.890714 660.94	-1321.890714 660.94			105.521

面積 (座標法) 計算書

地番 = 24-4
測点名

	[1] X (i)	[2] X (i+1)-X (i-1)	[3] Y (i)	[4] Y (i+1)-Y (i-1)	[2] * [3]	[1] * [4]	方向角	夾角	距離
24-94K	-149938.408	-11.623	-41494.721	-27.776	482293.142183	4164689.220608	182-46-14	90-00-07	12.951
24-71	-149951.344	-13.410	-41495.347	11.115	556452.603270	-1666709.188560	92-18-43	89-32-29	11.751
24-73	-149951.818	-10.842	-41483.606	11.235	449765.256252	-1684708.675230	182-47-39	270-28-56	10.380
24-74	-149962.186	-10.999	-41484.112	15.509	456283.747888	-2325763.542674	92-15-23	89-27-44	16.027
24-97K	-149962.817	22.465	-41468.097	16.541	-931580.799105	-2480534.955997	1-18-17	89-02-54	23.102
24-99K	-149939.721	24.409	-41467.571	-26.624	-1012181.940539	3991995.131904	272-46-07	91-27-50	27.182
合計				倍面積 面積	1032.009949 516.00	-1032.009949 516.00			101.393

面積 (座標法) 計算書

地番 = 24-5
測点名

	[1] X (i)	[2] X (i+1)-X (i-1)	[3] Y (i)	[4] Y (i+1)-Y (i-1)	[2] * [3]	[1] * [4]	方向角	夾角	距離
24-99K	-149939.721	2.687	-41467.571	27.241	-111423.363277	-4084507.939761	1-18-12	88-32-05	4.001
24-98K	-149935.721	5.308	-41467.480	-26.957	-220109.383840	4041817.230997	272-46-07	91-27-55	27.080
24-95K	-149934.413	-2.687	-41494.528	-27.241	111495.796736	4084363.344533	182-45-57	89-59-50	4.000
24-94K	-149938.408	-5.308	-41494.721	26.957	220253.979068	-4041889.664456	92-46-07	90-00-10	27.182
合計				倍面積 面積	217.028687 108.51	-217.028687 108.51			62.263

面積 (座標法) 計算書

地番 = 24-6
測点名

	[1] X (i)	[2] X (i+1)-X (i-1)	[3] Y (i)	[4] Y (i+1)-Y (i-1)	[2] * [3]	[1] * [4]	方向角	夾角	距離
24-44K	-149969.954	3.994	-41447.791	48.496	-165542.477254	-7272942.889184	1-20-54	88-34-56	6.332
24-69	-149963.624	7.768	-41447.642	-36.321	-321965.283056	5446828.787304	272-15-29	90-54-35	36.498
24-74	-149962.186	1.887	-41484.112	-48.203	-78280.519344	7228627.251758	272-11-30	179-56-01	11.742
24-70	-149961.737	-5.432	-41495.845	-12.026	225405.430040	1803439.849162	182-51-08	90-39-38	5.888
24-52K	-149967.618	-8.217	-41496.138	48.054	340973.765946	-7206543.915372	92-45-58	89-54-50	48.403
合計				倍面積 面積	590.916332 295.45	-590.916332 295.45			108.863

面積 (座標法) 計算書

地番 = 24-7
測点名

	[1] X (i)	[2] X (i+1)-X (i-1)	[3] Y (i)	[4] Y (i+1)-Y (i-1)	[2] * [3]	[1] * [4]	方向角	夾角	距離
24-52K	-149967.618	-2.014	-41496.138	-48.563	83573.221932	7282877.432934	182-50-34	90-04-36	4.355
24-104	-149971.968	-27.799	-41496.354	-1.334	1153557.144846	200062.605312	182-43-47	179-53-13	23.476
24-77	-149995.417	-25.527	-41497.472	28.378	1059305.967744	-4256569.943626	94-01-47	91-18-00	29.569
24-84K	-149997.495	-3.483	-41467.976	49.027	144432.960408	-7353927.187365	94-06-53	180-05-06	19.581
24-78	-149998.900	8.170	-41448.445	19.760	-338633.795650	-2963978.264000	1-22-12	87-15-19	9.578
24-102	-149989.325	25.579	-41448.216	0.575	-1060203.917064	-86243.861875	1-14-19	179-52-07	16.008
24-101	-149973.321	19.371	-41447.870	0.425	-802886.689770	-63738.661425	1-20-39	180-06-20	3.368
24-44K	-149969.954	5.703	-41447.791	-48.268	-236376.752073	7238749.739672	272-45-58	91-25-19	48.403
合計				倍面積 面積	2768.140373 1384.07	-2768.140373 1384.07			154.338

面積 (座標法) 計算書

地番 = 24-8
測点名

	[1] X (i)	[2] X (i+1)-X (i-1)	[3] Y (i)	[4] Y (i+1)-Y (i-1)	[2] * [3]	[1] * [4]	方向角	夾角	距離
24-79K	-150013.012	12.708	-41448.769	20.224	-526730.956452	-3033863.154688	1-18-55	87-16-47	14.116
24-78	-149998.900	15.517	-41448.445	-19.207	-643155.521065	2881028.872300	274-06-53	92-47-58	19.581
24-84K	-149997.495	-12.708	-41467.976	-20.224	526975.039008	3033549.338880	182-48-40	88-41-47	14.130
24-85K	-150011.608	-15.517	-41468.669	19.207	643469.336873	-2881272.954856	94-02-08	91-13-28	19.949
合計				倍面積 面積	557.898364 278.94	-557.898364 278.94			67.776

面積 (座標法) 計算書

地番 = 24-9
測点名

	[1] X (i)	[2] X (i+1)-X (i-1)	[3] Y (i)	[4] Y (i+1)-Y (i-1)	[2] * [3]	[1] * [4]	方向角	夾 角	距 離
24-85K	-150011.608	-1.068	-41468.669	-20.021	44288.538492	3003382.403768	182-48-08	88-46-00	2.475
24-91	-150014.080	-3.880	-41468.790	19.843	160898.905200	-2976729.389440	94-02-03	91-13-55	20.014
24-90	-150015.488	1.068	-41448.826	20.021	-44267.346168	-3003460.085248	1-19-08	87-17-05	2.477
24-79K	-150013.012	3.880	-41448.769	-19.843	-160821.223720	2976708.197116	274-02-08	92-43-00	19.949
合計				倍面積 面積	98.873804 49.43	-98.873804 49.43			44.915

面積 (座標法) 計算書

地番 = 24-10
測点名

	[1] X (i)	[2] X (i+1)-X (i-1)	[3] Y (i)	[4] Y (i+1)-Y (i-1)	[2] * [3]	[1] * [4]	方向角	夾 角	距 離
24-81K	-150050.529	-35.111	-41474.707	20.594	1456218.437477	-3090140.594226	92-08-03	89-22-37	22.260
24-6	-150051.358	1.922	-41452.462	25.140	-79671.631964	-3772291.140120	46-27-40	134-19-37	3.994
24-5	-150048.607	33.405	-41449.567	3.581	-1384622.785635	-537324.061667	1-16-55	134-49-15	30.662
24-80K	-150017.953	32.360	-41448.881	-23.489	-1341285.789160	3523771.698017	274-02-12	92-45-17	24.235
24-87K	-150016.247	-32.576	-41473.056	-25.826	1351026.272256	3874319.595022	182-45-26	88-43-14	34.322
合計				倍面積 面積	1664.502974 832.25	-1664.502974 832.25			115.473

面積 (座標法) 計算書

地番 = 24-11
測点名

	[1] X (i)	[2] X (i+1)-X (i-1)	[3] Y (i)	[4] Y (i+1)-Y (i-1)	[2] * [3]	[1] * [4]	方向角	夾 角	距 離
24-89K	-150028.390	-17.057	-41499.115	-26.337	707850.404555	3951297.707430	182-53-15	89-59-58	18.362
24-8	-150046.729	-21.295	-41500.040	1.762	883743.351800	-264382.336498	137-43-45	134-50-30	3.995
24-7	-150049.685	-3.800	-41497.353	25.333	157689.941400	-3801208.670105	92-08-04	134-24-19	22.662
24-81K	-150050.529	20.013	-41474.707	23.650	-830033.311191	-3548695.010850	2-45-21	90-37-17	20.881
24-82K	-150029.672	22.139	-41473.703	-24.408	-918186.310717	3661924.234176	272-53-17	90-07-56	25.444
合計				倍面積 面積	1064.075847 532.03	-1064.075847 532.03			91.344

面積 (座標法) 計算書

地番 = 24-12
測点名

	[1] X (i)	[2] X (i+1)-X (i-1)	[3] Y (i)	[4] Y (i+1)-Y (i-1)	[2] * [3]	[1] * [4]	方向角	夾 角	距 離
24-88K	-150026.296	-0.813	-41499.010	-25.513	33738.695130	3827620.889848	182-52-14	89-59-04	2.097
24-89K	-150028.390	-3.376	-41499.115	25.307	140101.012240	-3796768.465730	92-53-17	90-01-03	25.444
24-82K	-150029.672	0.813	-41473.703	25.513	-33718.120539	-3827707.021736	2-45-36	89-52-19	2.097
24-83K	-150027.577	3.376	-41473.602	-25.307	-140014.880352	3796747.891139	272-53-10	90-07-34	25.440
合計				倍面積 面積	106.706479 53.35	-106.706479 53.35			55.078

面積 (座標法) 計算書

地番 = 24-13

測点名	[1] X (i)	[2] X (i+1)-X (i-1)	[3] Y (i)	[4] Y (i+1)-Y (i-1)	[2] * [3]	[1] * [4]	方向角	夾角	距離
24-83K	-150027.577	10.049	-41473.602	25.954	-416768.226498	-3893815.733458	2-45-32	89-52-22	11.343
24-87K	-150016.247	11.037	-41473.056	4.691	-457738.119072	-703726.214677	94-02-36	271-17-04	4.155
24-86K	-150016.540	18.752	-41468.911	5.080	-777625.019072	-762084.023200	2-48-38	88-46-02	19.068
24-84K	-149997.495	21.123	-41467.976	-28.561	-875928.057048	4284078.454695	274-01-47	91-13-09	29.569
24-77	-149995.417	-8.126	-41497.472	-29.991	337208.457472	4498512.551247	182-46-38	88-44-51	10.216
24-9	-150005.621	-30.879	-41497.967	-1.538	1281415.722993	230708.645098	182-53-17	180-06-39	20.701
24-88K	-150026.296	-21.956	-41499.010	24.365	911152.263560	-3655390.702040	92-53-10	89-59-53	25.440
合計				倍面積 面積	1717.022335 858.51	-1717.022335 858.51			120.492

面積 (座標法) 計算書

地番 = 24-14

測点名	[1] X (i)	[2] X (i+1)-X (i-1)	[3] Y (i)	[4] Y (i+1)-Y (i-1)	[2] * [3]	[1] * [4]	方向角	夾角	距離
24-71	-149951.344	-9.919	-41495.347	-12.239	411592.346893	1835254.499216	182-44-36	90-25-53	10.405
24-70	-149961.737	-10.842	-41495.845	11.235	449897.951490	-1684820.115195	92-11-30	89-26-54	11.742
24-74	-149962.186	9.919	-41484.112	12.239	-411480.906928	-1835387.194454	2-47-39	90-36-09	10.380
24-73	-149951.818	10.842	-41483.606	-11.235	-449765.256252	1684708.675230	272-18-43	89-31-04	11.751
合計				倍面積 面積	244.135203 122.06	-244.135203 122.06			44.278

面積 (座標法) 計算書

地番 = 24-15

測点名	[1] X (i)	[2] X (i+1)-X (i-1)	[3] Y (i)	[4] Y (i+1)-Y (i-1)	[2] * [3]	[1] * [4]	方向角	夾角	距離
24-80K	-150017.953	1.052	-41448.881	20.085	-43604.222812	-3013110.586005	1-16-41	87-14-34	2.466
24-90	-150015.488	3.873	-41448.826	-19.909	-160531.303098	2986658.350592	274-02-03	92-45-22	20.014
24-91	-150014.080	-1.052	-41468.790	-20.085	43625.167080	3013032.796800	182-48-57	88-46-54	2.463
24-86K	-150016.540	-3.873	-41468.911	19.909	160609.092303	-2986679.294860	94-02-07	91-13-10	20.080
合計				倍面積 面積	98.733473 49.36	-98.733473 49.36			45.023