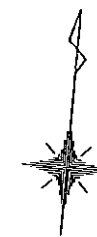
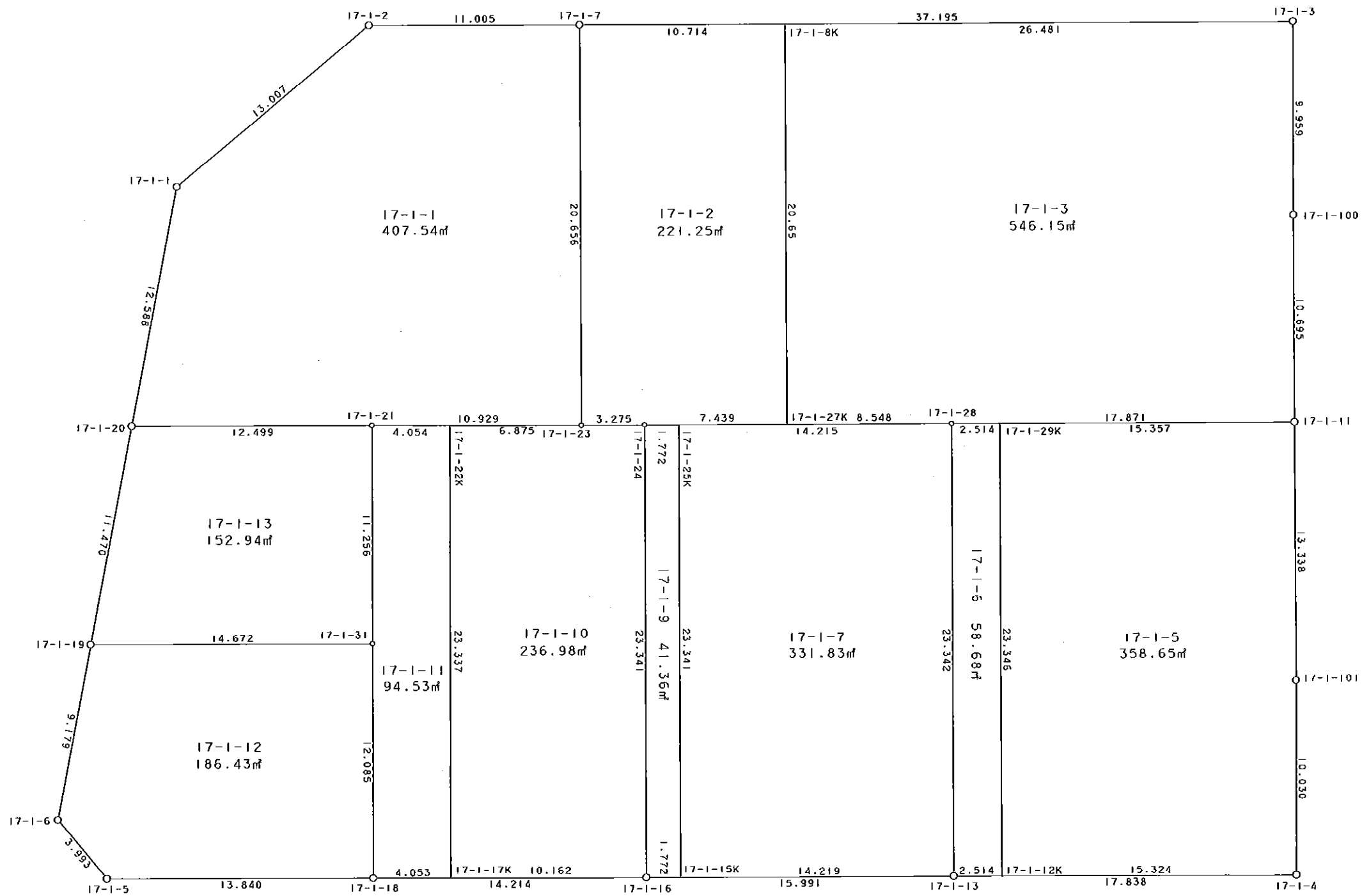


17-1街区



S = 1 / 250



凡 例

記号	名称
⊙	地区界点
○	街区点
○	画地点 (折れ点)
	画地点 (直線中)

地番	筆種別	面積	坪数
17-1-1	筆界	407.54	123.28
17-1-2	筆界	221.25	66.92
17-1-3	筆界	546.15	165.21
17-1-5	筆界	358.65	108.49
17-1-6	筆界	58.68	17.75
17-1-7	筆界	331.83	100.38
17-1-9	筆界	41.36	12.51
17-1-10	筆界	236.98	71.68
17-1-11	筆界	94.53	28.59
17-1-12	筆界	186.43	56.39
17-1-13	筆界	152.94	46.26
	合計	2636.34	797.46

面積 (座標法) 計算書

地番 = 17-1-1
測点名

	[1] X (i)	[2] X (i+1)-X (i-1)	[3] Y (i)	[4] Y (i+1)-Y (i-1)	[2] * [3]	[1] * [4]	方向角	夾角	距離
17-1-2	-149878.339	-10.294	-41666.171	-20.118	428911.564274	3015252.424002	224-47-29	140-20-03	13.007
17-1-1	-149887.570	-21.765	-41675.335	-10.327	907063.666275	1547888.935390	185-18-04	140-30-35	12.588
17-1-20	-149900.104	-11.305	-41676.498	11.275	471152.809890	-1690123.672600	84-21-25	79-03-21	12.499
17-1-21	-149898.875	2.273	-41664.060	23.317	-94702.408380	-3495192.068375	84-31-06	180-09-41	10.929
17-1-23	-149897.831	21.599	-41653.181	8.843	-899667.056419	-1325546.519533	354-20-36	89-49-30	20.656
17-1-7	-149877.276	19.492	-41655.217	-12.990	-811943.489764	1946905.815240	264-27-26	90-06-50	11.005
合計				倍面積 面積	815.085876 407.54	-815.085876 407.54			80.684

面積 (座標法) 計算書

地番 = 17-1-2
測点名

	[1] X (i)	[2] X (i+1)-X (i-1)	[3] Y (i)	[4] Y (i+1)-Y (i-1)	[2] * [3]	[1] * [4]	方向角	夾角	距離
17-1-8K	-149876.229	19.503	-41644.554	-12.699	-812193.736662	1903278.232071	264-23-32	90-03-01	10.714
17-1-7	-149877.276	-21.602	-41655.217	-8.627	899835.997634	1292991.260052	174-20-36	89-57-04	20.656
17-1-23	-149897.831	-20.227	-41653.181	5.295	842518.892087	-793709.015145	84-15-10	89-54-34	3.275
17-1-24	-149897.503	1.052	-41649.922	10.663	-43815.717944	-1598357.074489	84-24-54	180-09-44	7.439
17-1-27K	-149896.779	21.274	-41642.518	5.368	-885902.927932	-804645.909672	354-20-31	89-55-37	20.651
合計				倍面積 面積	442.507183 221.25	-442.507183 221.25			62.735

面積 (座標法) 計算書

地番 = 17-1-3
測点名

	[1] X (i)	[2] X (i+1)-X (i-1)	[3] Y (i)	[4] Y (i+1)-Y (i-1)	[2] * [3]	[1] * [4]	方向角	夾角	距離
17-1-27K	-149896.779	-19.718	-41642.518	10.543	821107.169924	-1580361.740997	84-24-51	90-04-20	8.548
17-1-28	-149895.947	2.578	-41634.011	26.293	-107332.480358	-3941214.134471	84-23-36	179-58-45	17.871
17-1-11	-149894.201	12.391	-41616.225	16.752	-515666.643975	-2511027.655152	354-27-07	90-03-31	10.695
17-1-100	-149883.556	20.559	-41617.259	-1.975	-855609.227781	296020.023100	354-34-41	180-07-34	9.959
17-1-3	-149873.642	7.327	-41618.200	-27.295	-304936.551400	4090801.058390	264-23-37	89-48-56	26.481
17-1-8K	-149876.229	-23.137	-41644.554	-24.318	963530.045898	3644690.136822	174-20-31	89-56-54	20.651
合計				倍面積 面積	1092.312308 546.15	-1092.312308 546.15			94.205

面積 (座標法) 計算書

地番 = 17-1-5
測点名

	[1] X (i)	[2] X (i+1)-X (i-1)	[3] Y (i)	[4] Y (i+1)-Y (i-1)	[2] * [3]	[1] * [4]	方向角	夾角	距離
17-1-12K	-149918.936	-21.761	-41629.237	17.525	905893.826357	-2627329.353400	84-28-49	90-03-54	15.324
17-1-4	-149917.462	11.461	-41613.984	14.320	-476937.870624	-2146818.055840	354-39-46	90-10-57	10.030
17-1-101	-149907.475	23.261	-41614.917	-2.241	-968004.584337	335942.651475	354-22-20	179-42-34	13.338
17-1-11	-149894.201	11.774	-41616.225	-16.592	-489989.433150	2487044.582992	264-23-41	90-01-21	15.357
17-1-29K	-149895.701	-24.735	-41631.509	-13.012	1029755.375115	1950442.861412	174-24-55	90-01-14	23.346
合計				倍面積 面積	717.313361 358.65	-717.313361 358.65			77.395

面積 (座標法) 計算書

地番 = 17-1-6
測点名

	[1] X (i)	[2] X (i+1)-X (i-1)	[3] Y (i)	[4] Y (i+1)-Y (i-1)	[2] * [3]	[1] * [4]	方向角	夾角	距離
17-1-29K	-149895.701	22.989	-41631.509	-4.774	-957066.760401	715602.076574	264-23-05	89-58-10	2.514
17-1-28	-149895.947	-23.477	-41634.011	-0.230	977441.676247	34476.067810	174-24-51	90-01-46	23.342
17-1-13	-149919.178	-22.989	-41631.739	4.774	957072.047871	-715714.155772	84-28-31	90-03-40	2.514
17-1-12K	-149918.936	23.477	-41629.237	0.230	-977329.597049	-34481.355280	354-24-55	89-56-24	23.346
合計				倍面積 面積	117.366668 58.68	-117.366668 58.68			51.716

面積 (座標法) 計算書

地番 = 17-1-7
測点名

	[1] X (i)	[2] X (i+1)-X (i-1)	[3] Y (i)	[4] Y (i+1)-Y (i-1)	[2] * [3]	[1] * [4]	方向角	夾角	距離
17-1-15K	-149920.562	-21.847	-41645.890	16.419	909837.758830	-2461545.707478	84-24-51	89-59-25	14.219
17-1-13	-149919.178	24.615	-41631.739	11.879	-1024765.255485	-1780889.915462	354-24-51	90-00-00	23.342
17-1-28	-149895.947	21.847	-41634.011	-16.419	-909578.238317	2461141.553793	264-24-45	89-59-54	14.215
17-1-25K	-149897.331	-24.615	-41648.158	-11.879	1025169.409170	1780630.394949	174-25-26	90-00-41	23.341
合計				倍面積 面積	663.674198 331.83	-663.674198 331.83			75.117

面積 (座標法) 計算書

地番 = 17-1-9
測点名

	[1] X (i)	[2] X (i+1)-X (i-1)	[3] Y (i)	[4] Y (i+1)-Y (i-1)	[2] * [3]	[1] * [4]	方向角	夾角	距離
17-1-25K	-149897.331	23.059	-41648.158	-4.032	-960364.875322	604386.038592	264-25-51	90-00-25	1.772
17-1-24	-149897.503	-23.403	-41649.922	0.504	974733.124566	-75548.341512	174-25-26	89-59-35	23.341
17-1-16	-149920.734	-23.059	-41647.654	4.032	960353.253586	-604480.399488	84-25-51	90-00-25	1.772
17-1-15K	-149920.562	23.403	-41645.890	-0.504	-974638.763670	75559.963248	354-25-26	89-59-35	23.341
合計				倍面積 面積	82.739160 41.36	-82.739160 41.36			50.226

面積 (座標法) 計算書

地番 = 17-1-10
測点名

	[1] X (i)	[2] X (i+1)-X (i-1)	[3] Y (i)	[4] Y (i+1)-Y (i-1)	[2] * [3]	[1] * [4]	方向角	夾角	距離
17-1-17K	-149921.716	-22.246	-41657.768	12.371	926718.706928	-1854681.548636	84-27-16	90-00-15	10.162
17-1-16	-149920.734	24.213	-41647.654	7.846	-1008414.646302	-1176278.078964	354-25-26	89-58-10	23.341
17-1-24	-149897.503	22.903	-41649.922	-5.527	-953908.163566	828483.499081	264-15-10	89-49-44	3.275
17-1-23	-149897.831	-0.985	-41653.181	-10.103	41028.383285	1514417.786593	264-31-00	180-15-50	6.875
17-1-22K	-149898.488	-23.885	-41660.025	-4.587	995049.697125	687584.364456	174-27-01	89-56-01	23.337
合計				倍面積 面積	473.977470 236.98	-473.977470 236.98			66.990

面積 (座標法) 計算書

地番 = 17-1-11

測点名	[1] X (i)	[2] X (i+1)-X (i-1)	[3] Y (i)	[4] Y (i+1)-Y (i-1)	[2] * [3]	[1] * [4]	方向角	夾 角	距 離
17-1-22K	-149898.488	22.841	-41660.025	-6.292	-951556.631025	943161.286496	264-31-17	90-04-16	4.054
17-1-21	-149898.875	-11.590	-41664.060	-2.941	482886.455400	440852.591375	174-25-21	89-54-04	11.256
17-1-31	-149910.078	-23.232	-41662.966	2.258	967914.026112	-338496.956124	174-28-22	180-03-01	12.085
17-1-18	-149922.107	-11.638	-41661.802	5.198	484860.051676	-779295.112186	84-27-50	89-59-28	4.053
17-1-17K	-149921.716	23.619	-41657.768	1.777	-983914.822392	-266410.889332	354-27-01	89-59-11	23.337
合計				倍面積 面積	189.079771 94.53	-189.079771 94.53			54.785

面積 (座標法) 計算書

地番 = 17-1-12

測点名	[1] X (i)	[2] X (i+1)-X (i-1)	[3] Y (i)	[4] Y (i+1)-Y (i-1)	[2] * [3]	[1] * [4]	方向角	夾 角	距 離
17-1-19	-149911.524	-10.585	-41677.567	-15.458	441157.046695	2317332.337992	185-21-26	101-00-47	9.179
17-1-6	-149920.663	-11.938	-41678.424	1.991	497557.025712	-298492.040033	134-30-10	129-08-44	3.993
17-1-5	-149923.462	-1.444	-41675.576	16.622	60179.531744	-2492027.785364	84-22-54	129-52-44	13.840
17-1-18	-149922.107	13.384	-41661.802	12.610	-557601.557968	-1890517.769270	354-28-22	90-05-28	12.085
17-1-31	-149910.078	10.583	-41662.966	-15.765	-440919.169178	2363332.379670	264-20-39	89-52-17	14.672
合計				倍面積 面積	372.877005 186.43	-372.877005 186.43			53.769

面積 (座標法) 計算書

地番 = 17-1-13

測点名	[1] X (i)	[2] X (i+1)-X (i-1)	[3] Y (i)	[4] Y (i+1)-Y (i-1)	[2] * [3]	[1] * [4]	方向角	夾 角	距 離
17-1-20	-149900.104	-12.649	-41676.498	-13.507	527166.023202	2024700.704728	185-20-52	100-59-27	11.470
17-1-19	-149911.524	-9.974	-41677.567	13.532	415692.053258	-2028602.742768	84-20-39	78-59-47	14.672
17-1-31	-149910.078	12.649	-41662.966	13.507	-526994.856934	-2024835.423546	354-25-21	90-04-42	11.256
17-1-21	-149898.875	9.974	-41664.060	-13.532	-415557.334440	2028431.576500	264-21-25	89-56-04	12.499
合計				倍面積 面積	305.885086 152.94	-305.885086 152.94			49.897