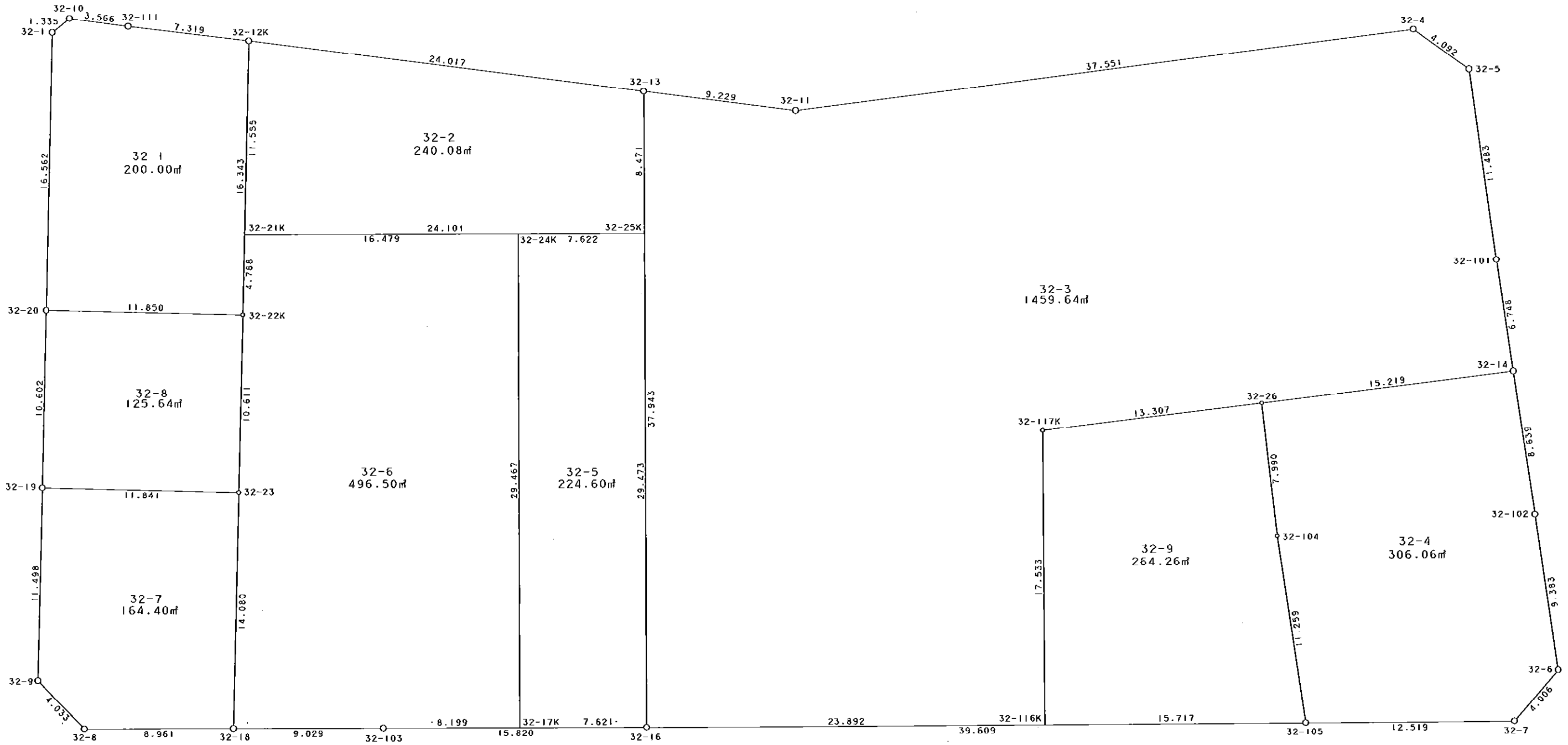


西部第5地区土地区画整理事業 出来形確認測量（原子図）

32街区



S = 1 / 250



凡例

記号	名称
⊙	地区界点
○	街区点
○	画地点(折れ点)
┆	画地点(直線中)

地番	筆種別	面積	坪数
32-1	筆界	200.00	60.50
32-2	筆界	240.08	72.62
32-3	筆界	1459.64	441.54
32-4	筆界	306.06	92.58
32-5	筆界	224.60	67.94
32-6	筆界	496.50	150.19
32-7	筆界	164.40	49.73
32-8	筆界	125.64	38.00
32-9	筆界	264.26	79.94
	筆合計	3481.18	1053.04

面積 (座標法) 計算書

地番 = 32-1
測点名

	[1] X (i)	[2] X (i+1)-X (i-1)	[3] Y (i)	[4] Y (i+1)-Y (i-1)	[2] * [3]	[1] * [4]	方向角	夾角	距離
32-10	-150044.483	0.182	-41690.734	-4.581	-7587.713588	687353.776623	237-43-35	133-11-29	1.335
32-1	-150045.196	-17.102	-41691.863	-3.517	713014.241026	527708.954332	188-17-24	130-33-49	16.562
32-20	-150061.585	-18.100	-41694.251	9.338	754665.943100	-1401275.080730	98-18-06	90-00-42	11.850
32-22K	-150063.296	14.462	-41682.525	14.077	-602812.676550	-2112441.017792	8-16-15	89-58-09	16.343
32-12K	-150047.123	17.918	-41680.174	-4.757	-746825.357732	713774.164111	283-47-36	95-31-21	7.319
32-111	-150045.378	2.640	-41687.282	-10.560	-110054.424480	1584479.191680	284-32-06	180-44-30	3.566
合計					400.011776 倍面積 面積	-400.011776 200.00			56.975

面積 (座標法) 計算書

地番 = 32-2
測点名

	[1] X (i)	[2] X (i+1)-X (i-1)	[3] Y (i)	[4] Y (i+1)-Y (i-1)	[2] * [3]	[1] * [4]	方向角	夾角	距離
32-25K	-150061.441	5.527	-41657.908	24.941	-230243.257516	-3742682.399981	6-52-06	89-59-53	8.471
32-13	-150053.031	14.318	-41656.895	-22.266	-596443.422610	3341080.788246	284-14-26	97-22-20	24.017
32-12K	-150047.123	-5.527	-41680.174	-24.941	230366.321698	3742325.294743	188-16-11	84-01-45	11.555
32-21K	-150058.558	-14.318	-41681.836	22.266	596800.527848	-3341203.852428	96-52-13	88-36-02	24.101
合計					480.169420 倍面積 面積	-480.169420 240.08			68.144

面積 (座標法) 計算書

地番 = 32-3
測点名

	[1] X (i)	[2] X (i+1)-X (i-1)	[3] Y (i)	[4] Y (i+1)-Y (i-1)	[2] * [3]	[1] * [4]	方向角	夾角	距離
32-13	-150053.031	-35.386	-41656.895	-13.481	1474070.886470	2022864.910911	186-52-14	82-32-10	37.943
32-16	-150090.702	-40.527	-41661.434	19.182	1688412.935718	-2879039.845764	96-51-55	89-59-41	23.892
32-116K	-150093.558	14.551	-41637.713	25.816	-605870.361863	-3874815.293328	6-51-46	89-59-51	17.533
32-117K	-150076.151	17.368	-41635.618	15.402	-723127.413424	-2311472.877702	90-10-05	263-18-19	13.307
32-26	-150076.190	-0.084	-41622.311	28.526	3496.274124	-4281073.395940	90-10-10	180-00-05	15.219
32-14	-150076.235	6.701	-41607.092	15.068	-278809.123492	-2261348.708980	358-43-04	88-32-54	6.748
32-101	-150069.489	18.228	-41607.243	-0.312	-758416.825404	46821.680568	359-11-48	180-28-44	11.483
32-5	-150058.007	14.267	-41607.404	-3.159	-593612.832868	474033.244113	312-53-26	133-41-38	4.092
32-4	-150055.222	2.691	-41610.402	-40.549	-111973.591782	6084589.196878	269-51-24	136-57-58	37.551
32-11	-150055.316	2.191	-41647.953	-46.493	-91250.665023	6976521.806788	284-20-04	194-28-40	9.229
合計					2919.282456 倍面積 面積	-2919.282456 1459.64			176.997

面積 (座標法) 計算書

地番 = 32-4
測点名

	[1] X (i)	[2] X (i+1)-X (i-1)	[3] Y (i)	[4] Y (i+1)-Y (i-1)	[2]*[3]	[1]*[4]	方向角	夾角	距離
32-26	-150076.190	-7.945	-41622.311	-15.297	330689.260895	2295715.478430	180-33-34	90-23-24	7.990
32-104	-150084.180	-19.246	-41622.389	0.202	801064.498694	-30317.004360	178-34-30	178-00-56	11.259
32-105	-150095.436	-12.755	-41622.109	12.709	530890.000295	-1907562.896124	96-52-37	98-18-07	12.519
32-7	-150096.935	1.183	-41609.680	15.405	-49224.251440	-2312243.283675	47-58-28	131-05-51	4.006
32-6	-150094.253	12.063	-41606.704	2.791	-501901.670352	-418913.060123	358-52-13	130-53-45	9.383
32-102	-150084.872	18.018	-41606.889	-0.388	-749672.926002	58232.930336	358-39-13	179-47-00	8.639
32-14	-150076.235	8.682	-41607.092	-15.422	-361232.772744	2314475.696170	270-10-10	91-30-57	15.219
合計				倍面積 面積	612.139346 306.06	-612.139346 306.06			69.015

面積 (座標法) 計算書

地番 = 32-5
測点名

	[1] X (i)	[2] X (i+1)-X (i-1)	[3] Y (i)	[4] Y (i+1)-Y (i-1)	[2]*[3]	[1]*[4]	方向角	夾角	距離
32-17K	-150089.784	-30.173	-41669.000	4.041	1257278.737000	-606512.817144	96-55-05	90-02-51	7.621
32-16	-150090.702	28.343	-41661.434	11.092	-1180810.023862	-1664806.066584	6-52-16	89-57-11	29.473
32-25K	-150061.441	30.173	-41657.908	-4.041	-1256944.058084	606398.283081	276-52-20	90-00-04	7.622
32-24K	-150060.529	-28.343	-41665.475	-11.092	1180924.557925	1664471.387668	186-52-14	89-59-54	29.467
合計				倍面積 面積	449.212979 224.60	-449.212979 224.60			74.183

面積 (座標法) 計算書

地番 = 32-6
測点名

	[1] X (i)	[2] X (i+1)-X (i-1)	[3] Y (i)	[4] Y (i+1)-Y (i-1)	[2]*[3]	[1]*[4]	方向角	夾角	距離
32-24K	-150060.529	31.226	-41665.475	-12.836	-1301046.122350	1926176.950244	276-52-09	89-59-55	16.479
32-21K	-150058.558	-2.767	-41681.836	-17.050	115333.640212	2558498.413900	188-16-26	91-24-17	4.788
32-22K	-150063.296	-15.237	-41682.525	-2.228	635116.633425	334341.023488	188-20-22	180-03-56	10.611
32-23	-150073.795	-24.430	-41684.064	-3.579	1018341.683520	537114.112305	188-19-51	179-59-29	14.080
32-18	-150087.726	-15.001	-41686.104	6.925	625333.246104	-1039357.502550	96-48-22	88-28-31	9.029
32-103	-150088.796	-2.058	-41677.139	17.104	85771.552062	-2567118.766784	96-55-17	180-06-55	8.199
32-17K	-150089.784	28.267	-41669.000	11.664	-1177857.623000	-1750647.240576	6-52-14	89-56-57	29.467
合計				倍面積 面積	993.009973 496.50	-993.009973 496.50			92.653

面積 (座標法) 計算書

地番 = 32-7
測点名

	[1] X (i)	[2] X (i+1)-X (i-1)	[3] Y (i)	[4] Y (i+1)-Y (i-1)	[2] * [3]	[1] * [4]	方向角	夾 角	距 離
32-19	-150072.076	-9.658	-41695.780	-13.381	402697.843240	2008114.448956	188-19-34	89-58-45	11.498
32-9	-150083.453	-14.586	-41697.445	0.778	608198.932770	-116764.926434	142-43-05	134-23-31	4.033
32-8	-150086.662	-4.273	-41695.002	11.341	178162.743546	-1702132.833742	96-49-08	134-06-03	8.961
32-18	-150087.726	12.867	-41686.104	10.938	-536375.100168	-1641659.546988	8-19-51	91-30-43	14.080
32-23	-150073.795	15.650	-41684.064	-9.676	-652355.601600	1452114.040420	278-20-49	90-00-58	11.841
合計				倍面積 面積	328.817788 164.40	-328.817788 164.40			50.413

面積 (座標法) 計算書

地番 = 32-8
測点名

	[1] X (i)	[2] X (i+1)-X (i-1)	[3] Y (i)	[4] Y (i+1)-Y (i-1)	[2] * [3]	[1] * [4]	方向角	夾 角	距 離
32-20	-150061.585	-8.780	-41694.251	-13.255	366075.523780	1989066.309175	188-17-32	89-59-26	10.602
32-19	-150072.076	-12.210	-41695.780	10.187	509105.473800	-1528784.238212	98-20-49	90-03-17	11.841
32-23	-150073.795	8.780	-41684.064	13.255	-365986.081920	-1989228.152725	8-20-22	89-59-33	10.611
32-22K	-150063.296	12.210	-41682.525	-10.187	-508943.630250	1528694.796352	278-18-06	89-57-44	11.850
合計				倍面積 面積	251.285410 125.64	-251.285410 125.64			44.904

面積 (座標法) 計算書

地番 = 32-9
測点名

	[1] X (i)	[2] X (i+1)-X (i-1)	[3] Y (i)	[4] Y (i+1)-Y (i-1)	[2] * [3]	[1] * [4]	方向角	夾 角	距 離
32-116K	-150093.558	-19.285	-41637.713	13.509	802983.295205	-2027613.875022	96-51-46	90-00-00	15.717
32-105	-150095.436	9.378	-41622.109	15.324	-390332.138202	-2300062.461264	358-34-30	81-42-44	11.259
32-104	-150084.180	19.246	-41622.389	-0.202	-801064.498694	30317.004360	0-33-34	181-59-04	7.990
32-26	-150076.190	8.029	-41622.311	-13.229	-334185.535019	1985357.917510	270-10-05	89-36-31	13.307
32-117K	-150076.151	-17.368	-41635.618	-15.402	723127.413424	2311472.877702	186-51-46	96-41-41	17.533
合計				倍面積 面積	528.536714 264.26	-528.536714 264.26			65.806