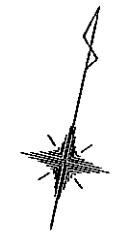
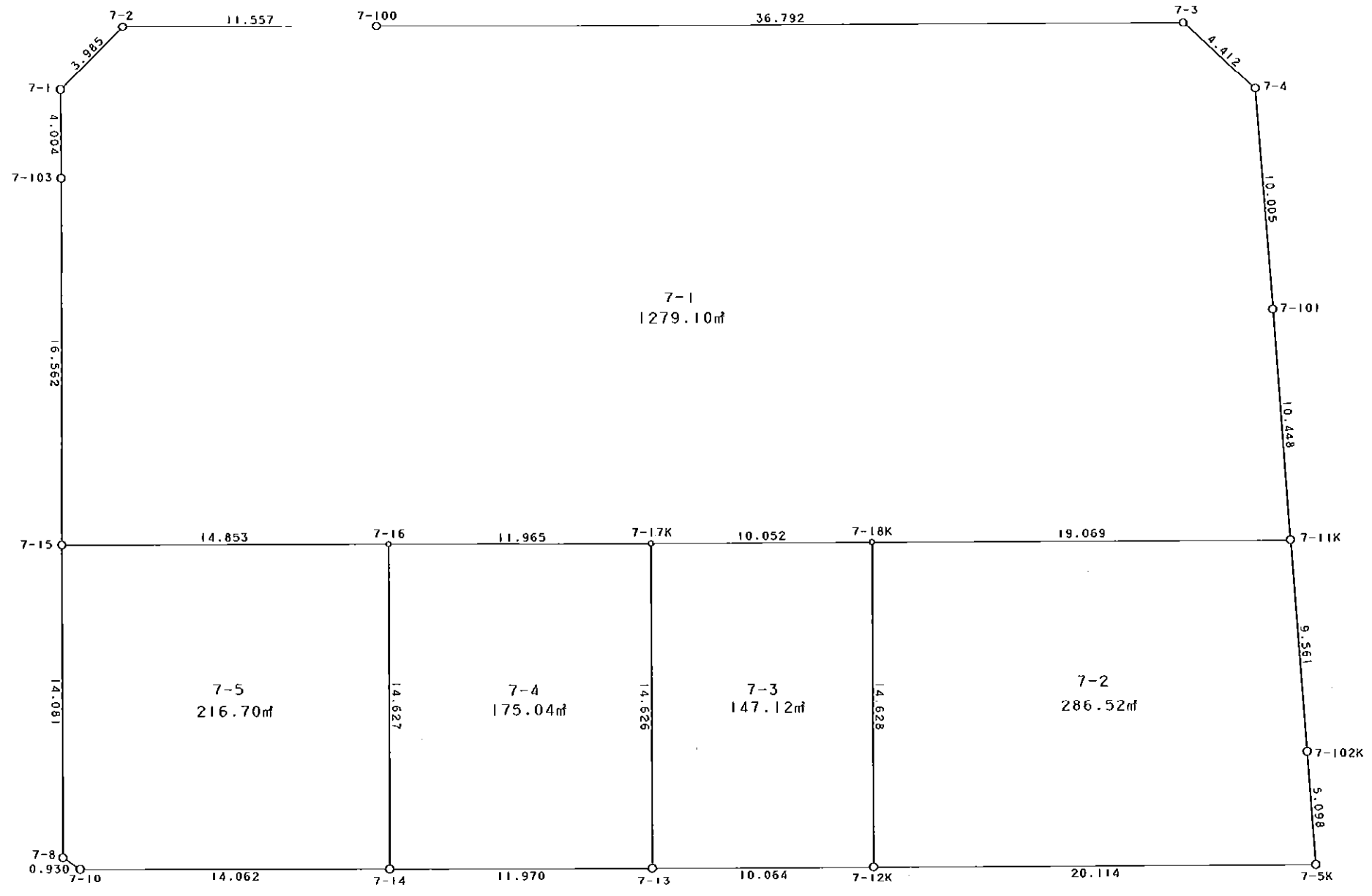


西部第5地区土地区画整理事業 出来形確認測量 (原子図)

7街区



S = 1 / 250



凡 例

記号	名称
⊙	地区界点
○	街区点
○	画地点 (折れ点)
┆	画地点 (直線中)

地番	筆種別	面積	坪数
7-1	筆界	1279.10	386.92
7-2	筆界	286.52	86.67
7-3	筆界	147.12	44.50
7-4	筆界	175.04	52.95
7-5	筆界	216.70	65.55
	筆合計	2104.48	636.59

面積 (座標法) 計算書

地番 = 7-1
測点名

	[1] X (i)	[2] X (i+1)-X (i-1)	[3] Y (i)	[4] Y (i+1)-Y (i-1)	[2] * [3]	[1] * [4]	方向角	夾角	距離
7-2	-149602.967	-5.964	-41543.224	-13.398	247763.787936	2004380.551866	212-25-34	135-25-37	3.985
7-1	-149606.331	-7.263	-41545.361	-1.228	301743.956943	183716.574468	166-52-36	134-27-02	4.004
7-103	-149610.230	-20.043	-41544.452	4.608	832675.451436	-689403.939840	167-05-41	180-13-05	16.562
7-15	-149626.374	-12.813	-41540.753	18.174	532261.668189	-2719309.721076	77-02-26	89-56-45	14.853
7-16	-149623.043	6.008	-41526.278	26.137	-249489.878224	-3910697.474891	77-04-18	180-01-52	11.965
7-17K	-149620.366	4.941	-41514.616	21.456	-205123.717656	-3210254.572896	76-59-02	179-54-44	10.052
7-18K	-149618.102	6.545	-41504.822	28.376	-271649.059990	-4245563.262352	77-01-35	180-02-33	19.069
7-11K	-149613.821	14.273	-41486.240	15.528	-592133.103520	-2323203.412488	343-00-16	85-58-41	10.448
7-101	-149603.829	19.547	-41489.294	-6.022	-810991.229818	900914.258238	342-44-38	179-44-22	10.005
7-4	-149594.274	11.715	-41492.262	-6.815	-486081.849330	1019484.977310	299-18-47	136-34-09	4.412
7-3	-149592.114	-6.093	-41496.109	-39.701	252835.792137	5938956.517914	257-02-14	137-43-27	36.792
7-100	-149600.367	-10.853	-41531.963	-47.115	450746.394439	7048421.291205	256-59-57	179-57-43	11.557
合計				倍面積 面積	2558.212542 1279.10	-2558.212542 1279.10			153.704

面積 (座標法) 計算書

地番 = 7-2
測点名

	[1] X (i)	[2] X (i+1)-X (i-1)	[3] Y (i)	[4] Y (i+1)-Y (i-1)	[2] * [3]	[1] * [4]	方向角	夾角	距離
7-18K	-149618.102	-18.534	-41504.822	-15.291	769250.370948	2287810.397682	166-59-54	89-58-19	14.628
7-12K	-149632.355	-9.730	-41501.531	22.890	403809.896630	-3425084.605950	77-00-18	90-00-24	20.114
7-5K	-149627.832	9.396	-41481.932	18.102	-389764.233072	-2708563.014864	342-55-22	85-55-04	5.098
7-102K	-149622.959	14.011	-41483.429	-4.308	-581224.323719	644575.707372	342-54-04	179-58-42	9.561
7-11K	-149613.821	4.857	-41486.240	-21.393	-201498.667680	3200688.472653	257-01-35	94-07-31	19.069
合計				倍面積 面積	573.043107 286.52	-573.043107 286.52			68.470

面積 (座標法) 計算書

地番 = 7-3
測点名

	[1] X (i)	[2] X (i+1)-X (i-1)	[3] Y (i)	[4] Y (i+1)-Y (i-1)	[2] * [3]	[1] * [4]	方向角	夾角	距離
7-17K	-149620.366	-16.518	-41514.616	-6.515	685738.427088	974776.684490	167-02-42	90-03-40	14.626
7-13	-149634.620	-11.989	-41511.337	13.085	497679.419293	-1957969.002700	76-59-38	89-56-56	10.064
7-12K	-149632.355	16.518	-41501.531	6.515	-685522.289058	-974854.792825	346-59-54	90-00-16	14.628
7-18K	-149618.102	11.989	-41504.822	-13.085	-497601.310958	1957752.864670	256-59-02	89-59-08	10.052
合計				倍面積 面積	294.246365 147.12	-294.246365 147.12			49.370

面積 (座標法) 計算書

地番 = 7-4
測点名

	[1] X (i)	[2] X (i+1)-X (i-1)	[3] Y (i)	[4] Y (i+1)-Y (i-1)	[2] * [3]	[1] * [4]	方向角	夾 角	距 離
7-16	-149623.043	-16.933	-41526.278	-8.387	703164.465374	1254888.461641	167-03-43	89-59-25	14.627
7-14	-149637.299	-11.577	-41523.003	14.941	480711.805731	-2235730.884359	77-04-00	90-00-17	11.970
7-13	-149634.620	16.933	-41511.337	8.387	-702911.469421	-1254985.557940	347-02-42	89-58-42	14.626
7-17K	-149620.366	11.577	-41514.616	-14.941	-480614.709432	2235477.888406	257-04-18	90-01-36	11.965
合計				倍面積 面積	350.092252 175.04	-350.092252 175.04			53.188

面積 (座標法) 計算書

地番 = 7-5
測点名

	[1] X (i)	[2] X (i+1)-X (i-1)	[3] Y (i)	[4] Y (i+1)-Y (i-1)	[2] * [3]	[1] * [4]	方向角	夾 角	距 離
7-15	-149626.374	-17.051	-41540.753	-11.305	708311.379403	1691526.158070	166-59-24	89-56-58	14.081
7-8	-149640.094	-14.050	-41537.583	4.040	583603.041150	-604545.979760	110-46-20	123-46-56	0.930
7-10	-149640.424	2.795	-41536.713	14.580	-116095.112835	-2181757.381920	77-09-35	146-23-15	14.062
7-14	-149637.299	17.381	-41523.003	10.435	-721711.315143	-1561465.215065	347-03-43	89-54-08	14.627
7-16	-149623.043	10.925	-41526.278	-17.750	-453674.587150	2655809.013250	257-02-26	89-58-43	14.853
合計				倍面積 面積	433.405425 216.70	-433.405425 216.70			58.553