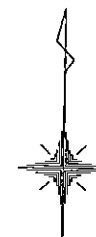
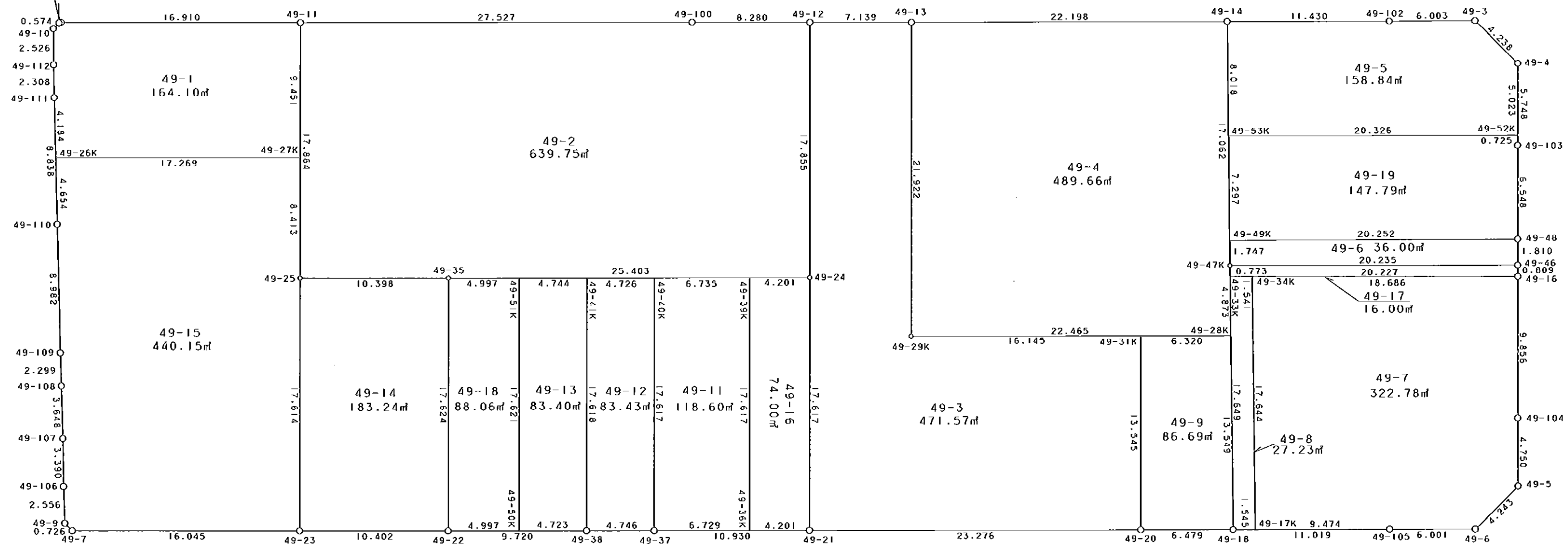
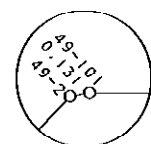


49街区



S = 1 / 300



凡 例

記号	名称
⊙	地区界点
○	街区点
○	画地点 (折れ点)
┆	画地点 (直線中)

### 面積 (座標法) 計算書

地番 = 49街区

測点名	[1] X (i)	[2] X (i+1)-X (i-1)	[3] Y (i)	[4] Y (i+1)-Y (i-1)	[2] * [3]	[1] * [4]	方向角	夾 角	距 離
49-2	-149985.809	-0.445	-41270.494	-0.519	18365.369830	77842.634871	222-48-39	143-21-00	0.574
49-10	-149986.230	-2.946	-41270.884	-0.320	121584.024264	47995.593600	178-24-43	135-36-04	2.526
49-112	-149988.755	-4.831	-41270.814	0.159	199379.302434	-23848.212045	177-47-23	179-22-40	2.308
49-111	-149991.061	-11.135	-41270.725	0.491	459549.522875	-73645.610951	177-23-35	179-36-12	8.838
49-110	-149999.890	-17.801	-41270.323	0.825	734653.019723	-123749.909250	177-18-02	179-54-27	8.982
49-109	-150008.862	-11.268	-41269.900	0.538	465029.233200	-80704.767756	177-07-57	179-49-55	2.299
49-108	-150011.158	-5.939	-41269.785	0.302	245101.253115	-45303.369716	177-03-41	179-55-44	3.648
49-107	-150014.801	-7.031	-41269.598	0.316	290166.543538	-47404.677116	177-49-10	180-45-29	3.390
49-106	-150018.189	-5.940	-41269.469	0.272	245140.645860	-40804.947408	176-47-34	178-58-24	2.556
49-9	-150020.741	-3.053	-41269.326	0.668	125995.252278	-100213.854988	133-39-36	136-52-02	0.726
49-7	-150021.242	-0.195	-41268.801	16.567	8047.416195	-2485401.916214	88-54-26	135-14-50	16.045
49-23	-150020.936	0.509	-41252.759	26.442	-20997.654331	-3966853.589712	88-52-54	179-58-28	10.402
49-22	-150020.733	0.400	-41242.359	20.118	-16496.943600	-3018117.106494	88-50-19	179-57-25	9.720
49-38	-150020.536	0.290	-41232.641	14.463	-11957.465890	-2169747.012168	88-52-38	180-02-19	4.746
49-37	-150020.443	0.307	-41227.896	15.673	-12656.964072	-2351270.403139	88-52-41	180-00-03	10.930
49-21	-150020.229	0.668	-41216.968	34.200	-27532.934624	-5130691.831800	88-52-57	180-00-16	23.276
49-20	-150019.775	0.576	-41193.696	29.750	-23727.568896	-4463088.306250	88-55-16	180-02-19	6.479
49-18	-150019.653	0.348	-41187.218	17.495	-14333.151864	-2624593.829235	88-49-29	179-54-13	11.019
49-105	-150019.427	0.330	-41176.201	17.017	-13588.146330	-2552880.589259	89-00-25	180-10-56	6.001
49-6	-150019.323	3.160	-41170.201	8.943	-130097.835160	-1341622.805589	43-55-15	134-54-50	4.243
49-5	-150016.267	7.805	-41167.258	2.834	-321310.448690	-425146.100678	358-41-07	134-45-52	4.750
49-104	-150011.518	14.603	-41167.367	-0.293	-601167.060301	43953.374774	358-55-49	180-14-42	9.856
49-16	-150001.664	10.663	-41167.551	-0.201	-438969.596313	30150.334464	358-47-46	179-51-57	0.809
49-46	-150000.855	2.619	-41167.568	-0.055	-107817.860592	8250.047025	358-47-50	180-00-04	1.810
49-48	-149999.045	8.357	-41167.606	-0.177	-344037.683342	26549.830965	358-47-01	179-59-11	6.548
49-103	-149992.498	12.294	-41167.745	-0.230	-506116.257030	34498.274540	359-05-34	180-18-33	5.748
49-4	-149986.751	8.678	-41167.836	-3.152	-357254.480808	472758.239152	313-45-26	134-39-52	4.238
49-3	-149983.820	2.795	-41170.897	-9.062	-115072.657115	1359153.376840	268-42-06	134-56-40	6.003
49-102	-149983.956	-0.366	-41176.898	-17.429	15070.744668	2614070.369124	268-50-49	180-08-43	11.430
49-14	-149984.186	-0.672	-41188.326	-33.622	27678.555072	5042768.301692	268-51-33	180-00-44	22.198
49-13	-149984.628	-0.577	-41210.520	-29.332	23778.470040	4399349.108496	268-54-59	180-03-26	7.139
49-12	-149984.763	-0.273	-41217.658	-15.417	11252.420634	2312315.091171	269-02-42	180-07-43	8.280
49-100	-149984.901	-0.702	-41225.937	-35.800	28940.607774	5369459.455800	268-49-34	179-46-52	27.527
49-11	-149985.465	-0.884	-41253.458	-44.428	36468.056872	6663554.239020	268-54-56	180-05-22	16.910
49-101	-149985.785	-0.344	-41270.365	-17.036	14197.005560	2555157.833260	259-27-39	170-32-43	0.131
合計				倍面積 面積	7262.734974 3631.36	-7262.734974 3631.36			272.085

地番	筆種別	面積	坪数
49-1	筆界	164.10	49.64
49-2	筆界	639.75	193.52
49-3	筆界	471.57	142.65
49-4	筆界	489.66	148.12
49-5	筆界	158.84	48.05
49-6	筆界	36.00	10.89
49-7	筆界	322.78	97.64
49-8	筆界	27.23	8.23
49-9	筆界	86.69	26.22
49-11	筆界	118.60	35.87
49-12	筆界	83.43	25.23
49-13	筆界	83.40	25.22
49-14	筆界	183.24	55.43
49-15	筆界	440.15	133.14
49-16	筆界	74.00	22.38
49-17	筆界	16.00	4.84
49-18	筆界	88.06	26.63
49-19	筆界	147.79	44.70
	筆合	3631.29	1098.40

面積 (座標法) 計算書

地番 = 49-1  
測点名

	[1] X (i)	[2] X (i+1)-X (i-1)	[3] Y (i)	[4] Y (i+1)-Y (i-1)	[2]*[3]	[1]*[4]	方向角	夾角	距離
49-27K	-149994.914	9.776	-41253.269	17.077	-403291.957744	-2561463.146378	358-51-15	89-56-21	9.451
49-11	-149985.465	9.129	-41253.458	-17.096	-376602.818082	2564151.509640	268-54-56	90-03-41	16.910
49-101	-149985.785	-0.344	-41270.365	-17.036	14197.005560	2555157.833260	259-27-39	170-32-43	0.131
49-2	-149985.809	-0.445	-41270.494	-0.519	18365.369830	77842.634871	222-48-39	143-21-00	0.574
49-10	-149986.230	-2.946	-41270.884	-0.320	121584.024264	47995.593600	178-24-43	135-36-04	2.526
49-112	-149988.755	-4.831	-41270.814	0.159	199379.302434	-23848.212045	177-47-23	179-22-40	2.308
49-111	-149991.061	-6.486	-41270.725	0.279	267681.922350	-41847.506019	177-23-51	179-36-28	4.184
49-26K	-149995.241	-3.853	-41270.535	17.456	159015.371355	-2618316.926896	88-54-54	91-31-03	17.269
合計				倍面積 面積	328.219967 164.10	-328.219967 164.10			53.353

面積 (座標法) 計算書

地番 = 49-2  
測点名

	[1] X (i)	[2] X (i+1)-X (i-1)	[3] Y (i)	[4] Y (i+1)-Y (i-1)	[2]*[3]	[1]*[4]	方向角	夾角	距離
49-11	-149985.465	-18.424	-41253.458	-27.163	760053.710192	4074055.185795	178-51-06	90-01-32	17.864
49-25	-150003.325	-17.647	-41253.100	10.754	-727993.455700	-1613135.757050	88-49-35	89-58-29	10.398
49-35	-150003.112	0.710	-41242.704	35.794	-29282.319840	-5369211.390928	88-52-44	180-03-09	25.403
49-24	-150002.615	18.349	-41217.306	25.046	-756296.347794	-3756965.495290	358-52-13	89-59-29	17.855
49-12	-149984.763	17.714	-41217.658	-8.631	-730129.593812	1294518.489453	269-02-42	90-10-29	8.280
49-100	-149984.901	-0.702	-41225.937	-35.800	28940.607774	5369459.455800	268-49-34	179-46-52	27.527
合計				倍面積 面積	1279.512220 639.75	-1279.512220 639.75			107.327

面積 (座標法) 計算書

地番 = 49-3  
測点名

	[1] X (i)	[2] X (i+1)-X (i-1)	[3] Y (i)	[4] Y (i+1)-Y (i-1)	[2]*[3]	[1]*[4]	方向角	夾角	距離
49-12	-149984.763	-17.987	-41217.658	-6.786	741382.014446	1017796.601718	178-52-13	89-57-14	17.855
49-24	-150002.615	-35.466	-41217.306	0.690	1461812.974596	-103501.804350	178-54-02	180-01-49	17.617
49-21	-150020.229	-17.160	-41216.968	23.610	707283.170880	-3541977.606690	88-52-57	89-58-55	23.276
49-20	-150019.775	13.996	-41193.696	23.004	-576546.969216	-3451054.904100	358-51-58	89-59-01	13.545
49-31K	-150006.233	13.229	-41193.964	-16.410	-544954.949756	2461602.283530	268-53-21	90-01-23	16.145
49-29K	-150006.546	21.605	-41210.106	-16.556	-890344.340130	2483508.375576	358-55-04	270-01-43	21.922
49-13	-149984.628	21.783	-41210.520	-7.552	-897688.757160	1132683.910656	268-54-59	89-59-55	7.139
合計				倍面積 面積	943.143660 471.57	-943.143660 471.57			117.499

面積 (座標法) 計算書

地番 = 49-4  
測点名

	[1] X (i)	[2] X (i+1)-X (i-1)	[3] Y (i)	[4] Y (i+1)-Y (i-1)	[2]*[3]	[1]*[4]	方向角	夾角	距離
49-13	-149984.628	-22.360	-41210.520	-21.780	921467.227200	3266665.197840	178-55-04	90-03-31	21.922
49-29K	-150006.546	-21.483	-41210.106	22.875	885316.707198	-3431399.739750	88-53-26	89-58-22	22.465
49-28K	-150006.111	5.306	-41187.645	22.307	-218541.644370	-3346186.318077	358-11-21	89-17-55	4.873
49-47K	-150001.240	21.925	-41187.799	-0.681	-903042.493075	102150.844440	358-13-48	180-02-27	17.062
49-14	-149984.186	16.612	-41188.326	-22.721	-684220.471512	3407790.690106	268-51-33	90-37-45	22.198
合計				倍面積 面積	979.325441 489.66	-979.325441 489.66			88.520

面積 (座標法) 計算書

地番 = 49-5  
測点名

	[1] X (i)	[2] X (i+1)-X (i-1)	[3] Y (i)	[4] Y (i+1)-Y (i-1)	[2]*[3]	[1]*[4]	方向角	夾角	距離
49-52K	-149991.773	5.449	-41167.756	20.242	-224323.102444	-3036133.469066	359-05-14	90-17-27	5.023
49-4	-149986.751	7.953	-41167.836	-3.141	-327407.799708	471108.384891	313-45-26	134-40-12	4.238
49-3	-149983.820	2.795	-41170.897	-9.062	-115072.657115	1359153.376840	268-42-06	134-56-40	6.003
49-102	-149983.956	-0.366	-41176.898	-17.429	15070.744668	2614070.369124	268-50-49	180-08-43	11.430
49-14	-149984.186	-8.244	-41188.326	-11.180	339556.559544	1676823.199480	178-13-39	89-22-50	8.018
49-53K	-149992.200	-7.587	-41188.078	20.570	312493.947786	-3085339.554000	88-47-47	90-34-08	20.326
合計				倍面積 面積	317.692731 158.84	-317.692731 158.84			55.038

面積 (座標法) 計算書

地番 = 49-6  
測点名

	[1] X (i)	[2] X (i+1)-X (i-1)	[3] Y (i)	[4] Y (i+1)-Y (i-1)	[2]*[3]	[1]*[4]	方向角	夾角	距離
49-48	-149999.045	1.361	-41167.606	-20.285	-56029.111766	3042730.627825	268-43-47	89-55-57	20.252
49-49K	-149999.494	-2.195	-41187.853	-20.193	90407.337335	3028939.782342	178-13-43	89-29-56	1.747
49-47K	-150001.240	-1.361	-41187.799	20.285	56056.594439	-3042775.153400	88-54-35	90-40-52	20.235
49-46	-150000.855	2.195	-41167.568	20.193	-90362.811760	-3028967.265015	358-47-50	89-53-15	1.810
合計				倍面積 面積	72.008248 36.00	-72.008248 36.00			44.044

面積 (座標法) 計算書

地番 = 49-7  
測点名

	[1] X (i)	[2] X (i+1)-X (i-1)	[3] Y (i)	[4] Y (i+1)-Y (i-1)	[2]*[3]	[1]*[4]	方向角	夾角	距離
49-17K	-150019.621	-17.441	-41185.673	10.033	718319.322793	-1505146.857493	88-49-36	90-38-55	9.474
49-105	-150019.427	0.298	-41176.201	15.472	-12270.507898	-2321100.574544	89-00-25	180-10-49	6.001
49-6	-150019.323	3.160	-41170.201	8.943	-130097.835160	-1341622.805589	43-55-15	134-54-50	4.243
49-5	-150016.267	7.805	-41167.258	2.834	-321310.448690	-425146.100678	358-41-07	134-45-52	4.750
49-104	-150011.518	14.603	-41167.367	-0.293	-601167.060301	43953.374774	358-55-49	180-14-42	9.856
49-16	-150001.664	9.532	-41167.551	-18.867	-392409.096132	2830081.394688	269-00-45	90-04-56	18.686
49-34K	-150001.986	-17.957	-41186.234	-18.122	739581.203938	2718335.990292	178-10-41	89-09-56	17.644
合計				倍面積 面積	645.578550 322.78	-645.578550 322.78			70.654

面積 (座標法) 計算書

地番 = 49-8  
測点名

	[1] X (i)	[2] X (i+1)-X (i-1)	[3] Y (i)	[4] Y (i+1)-Y (i-1)	[2]*[3]	[1]*[4]	方向角	夾角	距離
49-17K	-150019.621	17.667	-41185.673	0.984	-727627.284891	-147619.307064	358-10-41	89-21-53	17.644
49-34K	-150001.986	17.608	-41186.234	-2.102	-725207.208272	315304.174572	268-59-46	90-49-05	1.541
49-33K	-150002.013	-17.667	-41187.775	-0.984	727664.420925	147601.980792	178-11-29	89-11-43	17.649
49-18	-150019.653	-17.608	-41187.218	2.102	725224.534544	-315341.310606	88-48-48	90-37-19	1.545
合計				倍面積 面積	54.462306 27.23	-54.462306 27.23			38.379

面積 (座標法) 計算書

地番 = 49-9  
測点名

	[1] X (i)	[2] X (i+1)-X (i-1)	[3] Y (i)	[4] Y (i+1)-Y (i-1)	[2]*[3]	[1]*[4]	方向角	夾角	距離
49-20	-150019.775	-13.420	-41193.696	6.746	552819.400320	-1012033.402150	88-55-16	90-03-18	6.479
49-18	-150019.653	13.664	-41187.218	6.051	-562782.146752	-907768.920303	358-11-38	89-16-22	13.549
49-28K	-150006.111	13.420	-41187.645	-6.746	-552738.195900	1011941.224806	268-53-38	90-42-00	6.320
49-31K	-150006.233	-13.664	-41193.964	-6.051	562874.324096	907687.715883	178-51-58	89-58-20	13.545
合計				倍面積 面積	173.381764 86.69	-173.381764 86.69			39.893

面積 (座標法) 計算書

地番 = 49-11  
測点名

	[1] X (i)	[2] X (i+1)-X (i-1)	[3] Y (i)	[4] Y (i+1)-Y (i-1)	[2]*[3]	[1]*[4]	方向角	夾角	距離
49-37	-150020.443	-17.482	-41227.896	7.072	720746.077872	-1060944.572896	88-52-34	89-59-42	6.729
49-36K	-150020.311	17.746	-41221.168	6.390	-731510.847328	-958629.787290	358-54-02	90-01-28	17.617
49-39K	-150002.697	17.482	-41221.506	-7.072	-720634.367892	1060819.073184	268-52-37	89-58-35	6.735
49-40K	-150002.829	-17.746	-41228.240	-6.390	731636.347040	958518.077310	178-52-52	90-00-15	17.617
合計				倍面積 面積	237.209692 118.60	-237.209692 118.60			48.698

面積 (座標法) 計算書

地番 = 49-12  
測点名

	[1] X (i)	[2] X (i+1)-X (i-1)	[3] Y (i)	[4] Y (i+1)-Y (i-1)	[2]*[3]	[1]*[4]	方向角	夾角	距離
49-37	-150020.443	17.707	-41227.896	4.401	-730022.354472	-660239.969643	358-52-52	90-00-14	17.617
49-40K	-150002.829	17.522	-41228.240	-5.069	-722401.221280	760364.340201	268-53-04	90-00-12	4.726
49-41K	-150002.921	-17.707	-41232.965	-4.401	730112.111255	660162.855321	178-56-47	90-03-43	17.618
49-38	-150020.536	-17.522	-41232.641	5.069	722478.335602	-760454.096984	88-52-38	89-55-51	4.746
合計				倍面積 面積	166.871105 83.43	-166.871105 83.43			44.707

面積 (座標法) 計算書

地番 = 49-13  
測点名

	[1] X (i)	[2] X (i+1)-X (i-1)	[3] Y (i)	[4] Y (i+1)-Y (i-1)	[2] * [3]	[1] * [4]	方向角	夾角	距離
49-50K	-150020.632	-17.522	-41237.363	5.067	722561.074486	-760154.542344	88-50-07	89-57-26	4.723
49-38	-150020.536	17.711	-41232.641	4.398	-730271.304751	-659790.317328	358-56-47	90-06-40	17.618
49-41K	-150002.921	17.522	-41232.965	-5.067	-722484.012730	760064.800707	268-52-36	89-55-49	4.744
49-51K	-150003.014	-17.711	-41237.708	-4.398	730361.046388	659713.255572	178-52-41	90-00-05	17.621
合計				倍面積 面積	166.803393 83.40	-166.803393 83.40			44.706

面積 (座標法) 計算書

地番 = 49-14  
測点名

	[1] X (i)	[2] X (i+1)-X (i-1)	[3] Y (i)	[4] Y (i+1)-Y (i-1)	[2] * [3]	[1] * [4]	方向角	夾角	距離
49-25	-150003.325	-17.824	-41253.100	-10.055	735295.254400	1508283.432875	178-53-27	90-03-52	17.614
49-23	-150020.936	-17.408	-41252.759	10.741	718128.028672	-1611374.873576	88-52-54	89-59-27	10.402
49-22	-150020.733	17.824	-41242.359	10.055	-735103.806816	-1508458.470315	358-52-42	89-59-48	17.624
49-35	-150003.112	17.408	-41242.704	-10.741	-717952.991232	1611183.425992	268-49-35	89-56-53	10.398
合計				倍面積 面積	366.485024 183.24	-366.485024 183.24			56.038

面積 (座標法) 計算書

地番 = 49-15  
測点名

	[1] X (i)	[2] X (i+1)-X (i-1)	[3] Y (i)	[4] Y (i+1)-Y (i-1)	[2] * [3]	[1] * [4]	方向角	夾角	距離
49-26K	-149995.241	-4.976	-41270.535	-17.054	205362.182160	2558018.840014	177-23-21	88-28-27	4.654
49-110	-149999.890	-13.621	-41270.323	0.635	562143.069583	-95249.930150	177-18-02	179-54-41	8.982
49-109	-150008.862	-11.268	-41269.900	0.538	465029.233200	-80704.767756	177-07-57	179-49-55	2.299
49-108	-150011.158	-5.939	-41269.785	0.302	245101.253115	-45303.369716	177-03-41	179-55-44	3.648
49-107	-150014.801	-7.031	-41269.598	0.316	290166.543538	-47404.677116	177-49-10	180-45-29	3.390
49-106	-150018.189	-5.940	-41269.469	0.272	245140.645860	-40804.947408	176-47-34	178-58-24	2.556
49-9	-150020.741	-3.053	-41269.326	0.668	125995.252278	-100213.854988	133-39-36	136-52-02	0.726
49-7	-150021.242	-0.195	-41268.801	16.567	8047.416195	-2485401.916214	88-54-26	135-14-50	16.045
49-23	-150020.936	17.917	-41252.759	15.701	-739125.683003	-2355478.716136	358-53-27	89-59-01	17.614
49-25	-150003.325	26.022	-41253.100	-0.510	-1073488.168200	76501.695750	358-50-56	179-57-29	8.413
49-27K	-149994.914	8.084	-41253.269	-17.435	-333491.426596	2615161.325590	268-54-54	90-03-58	17.269
合計				倍面積 面積	880.318130 440.15	-880.318130 440.15			85.596

面積 (座標法) 計算書

地番 = 49-16  
測点名

	[1] X (i)	[2] X (i+1)-X (i-1)	[3] Y (i)	[4] Y (i+1)-Y (i-1)	[2]*[3]	[1]*[4]	方向角	夾角	距離
49-36K	-150020.311	-17.532	-41221.168	4.538	722689.517376	-680792.171318	88-52-53	89-58-51	4.201
49-21	-150020.229	17.696	-41216.968	3.862	-729375.465728	-579378.124398	358-54-02	90-01-09	17.617
49-24	-150002.615	17.532	-41217.306	-4.538	-722621.808792	680711.866870	268-52-53	89-58-51	4.201
49-39K	-150002.697	-17.696	-41221.506	-3.862	729455.770176	579310.415814	178-54-02	90-01-09	17.617
合計				倍面積 面積	148.013032 74.00	-148.013032 74.00			43.636

面積 (座標法) 計算書

地番 = 49-17  
測点名

	[1] X (i)	[2] X (i+1)-X (i-1)	[3] Y (i)	[4] Y (i+1)-Y (i-1)	[2]*[3]	[1]*[4]	方向角	夾角	距離
49-16	-150001.664	1.158	-41167.551	20.207	-47672.024058	-3031083.624448	358-47-46	89-47-05	0.809
49-46	-150000.855	0.424	-41167.568	-20.248	-17455.048832	3037217.312040	268-54-35	90-06-49	20.235
49-47K	-150001.240	-1.158	-41187.799	-20.207	47695.471242	3031075.056680	178-13-18	89-18-43	0.773
49-33K	-150002.013	-0.424	-41187.775	20.248	17463.616600	-3037240.759224	89-00-41	90-47-23	20.227
合計				倍面積 面積	32.014952 16.00	-32.014952 16.00			42.044

面積 (座標法) 計算書

地番 = 49-18  
測点名

	[1] X (i)	[2] X (i+1)-X (i-1)	[3] Y (i)	[4] Y (i+1)-Y (i-1)	[2]*[3]	[1]*[4]	方向角	夾角	距離
49-51K	-150003.014	17.520	-41237.708	-5.341	-722484.644160	801166.097774	268-52-34	89-59-53	4.997
49-35	-150003.112	-17.719	-41242.704	-4.651	730779.472176	697664.473912	178-52-42	90-00-08	17.624
49-22	-150020.733	-17.520	-41242.359	5.341	722566.129680	-801260.734953	88-50-31	89-57-49	4.997
49-50K	-150020.632	17.719	-41237.363	4.651	-730684.834997	-697745.959432	358-52-41	90-02-10	17.621
合計				倍面積 面積	176.122699 88.06	-176.122699 88.06			45.239

面積 (座標法) 計算書

地番 = 49-19  
測点名

	[1] X (i)	[2] X (i+1)-X (i-1)	[3] Y (i)	[4] Y (i+1)-Y (i-1)	[2]*[3]	[1]*[4]	方向角	夾角	距離
49-53K	-149992.200	-7.721	-41188.078	-20.097	318013.150238	3014393.243400	178-13-59	89-26-12	7.297
49-49K	-149999.494	-6.845	-41187.853	20.472	281930.853785	-3070789.641168	88-43-47	90-29-48	20.252
49-48	-149999.045	6.996	-41167.606	20.108	-288008.571576	-3016180.796860	358-47-01	90-03-14	6.548
49-103	-149992.498	7.272	-41167.745	-0.150	-299371.841640	22498.874700	359-07-51	180-20-50	0.725
49-52K	-149991.773	0.298	-41167.756	-20.333	-12267.991288	3049782.720409	268-47-47	89-39-56	20.326
合計				倍面積 面積	295.599519 147.79	-295.599519 147.79			55.148