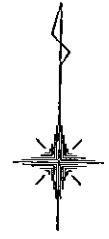
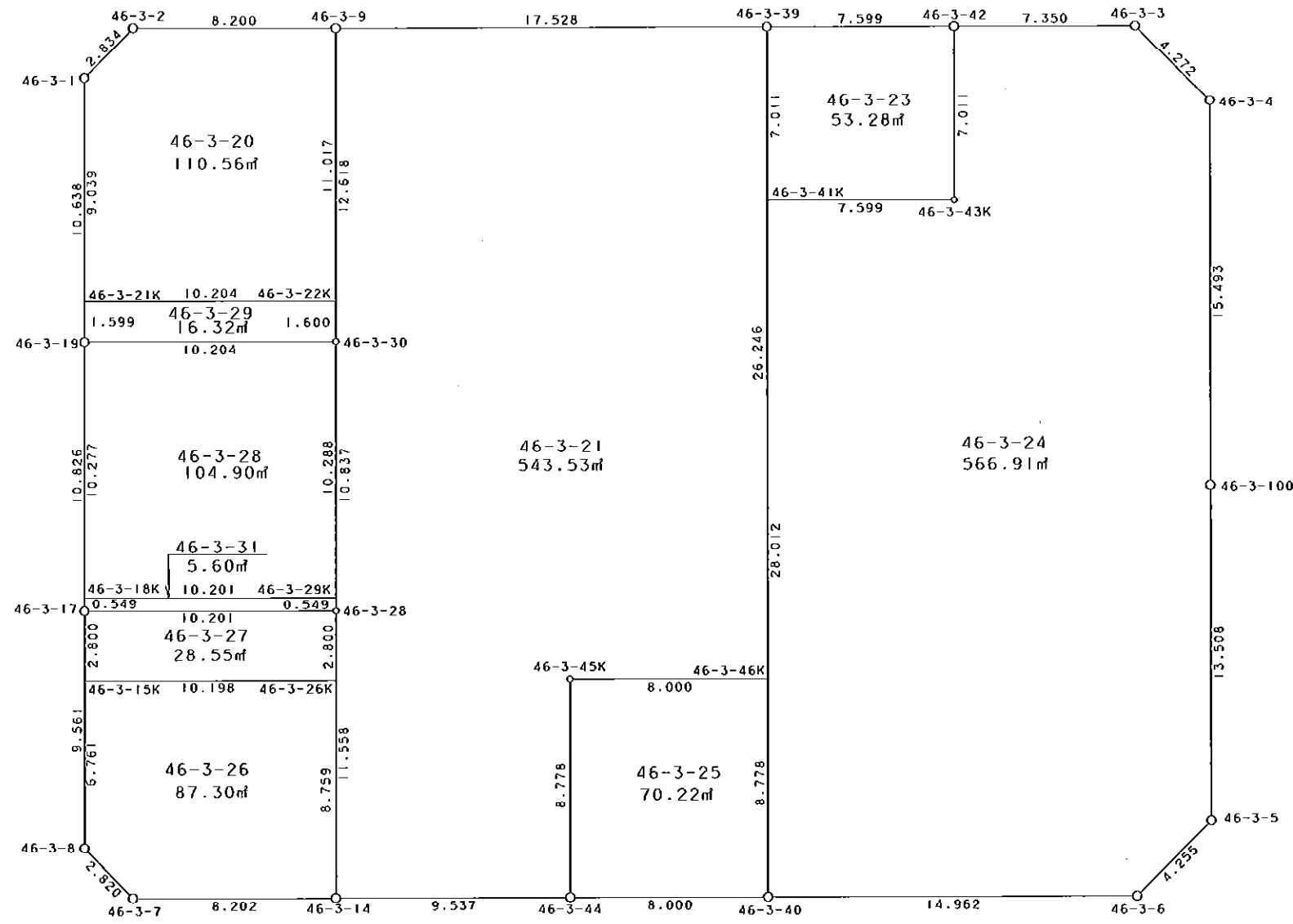


西部第4地区土地区画整理事業 出来形確認測量 (原子図)

46-3街区



S = 1 / 250



凡例

記号	名称
⊙	地区界点
○	街区点
○	画地点(折点)
┆	画地点(直線中)

面積 (座標法) 計算書

地番 = 46-3街区

測点名	[1] X (i)	[2] X (i+1)-X (i-1)	[3] Y (i)	[4] Y (i+1)-Y (i-1)	[2]*[3]	[1]*[4]	方向角	夾角	距離
46-3-2	-149943.602	-2.188	-41212.392	-10.164	90172.713696	1524026.770728	223-53-57	134-55-10	2.834
46-3-1	-149945.644	-12.678	-41214.357	-1.750	522515.618046	262404.877000	178-50-31	134-56-34	10.638
46-3-19	-149956.280	-21.460	-41214.142	0.428	884455.487320	-64181.287840	178-52-22	180-01-51	10.826
46-3-17	-149967.104	-20.383	-41213.929	0.404	840063.514807	-60586.710016	178-51-19	179-58-57	9.561
46-3-8	-149976.663	-11.520	-41213.738	2.218	474782.261760	-332648.238534	134-03-07	135-11-48	2.820
46-3-7	-149978.624	-1.799	-41211.711	10.227	74139.868089	-1533831.387648	88-52-06	134-48-59	8.202
46-3-14	-149978.462	0.357	-41203.511	17.735	-14709.653427	-2659868.023570	88-49-42	179-57-36	9.537
46-3-44	-149978.267	0.348	-41193.976	17.534	-14335.503648	-2629718.933578	88-54-15	180-04-33	8.000
46-3-40	-149978.114	0.435	-41185.977	22.958	-17915.899995	-3443197.541212	88-55-12	180-00-57	14.962
46-3-6	-149977.832	3.350	-41171.018	17.907	-137922.910300	-2685653.037624	43-51-26	134-56-14	4.255
46-3-5	-149974.764	16.573	-41168.070	2.669	-682278.424110	-400282.645116	358-48-59	134-57-33	13.508
46-3-100	-149961.259	28.995	-41168.349	-0.571	-1193676.279255	85627.878889	358-55-12	180-06-13	15.493
46-3-4	-149945.769	18.450	-41168.641	-3.373	-759561.426450	505767.078837	313-51-09	134-55-57	4.272
46-3-3	-149942.809	2.821	-41171.722	-10.430	-116145.427762	1563903.497870	268-54-59	135-03-50	7.350
46-3-42	-149942.948	-0.288	-41179.071	-14.947	11859.572448	2241197.243756	268-52-36	179-57-37	7.599
46-3-39	-149943.097	-0.508	-41186.669	-25.122	20922.827852	3766870.482834	268-49-35	179-56-59	17.528
46-3-9	-149943.456	-0.505	-41204.193	-25.723	20808.117465	3856995.518688	268-58-47	180-09-12	8.200
合計				倍面積 面積	3174.456536 1587.22	-3174.456536 1587.22			155.585

地番	筆種別	面積	坪数
46-3-20	筆界	110.56	33.44
46-3-21	筆界	543.53	164.42
46-3-23	筆界	53.28	16.11
46-3-24	筆界	566.91	171.49
46-3-25	筆界	70.22	21.24
46-3-26	筆界	87.30	26.41
46-3-27	筆界	28.55	8.63
46-3-28	筆界	104.90	31.73
46-3-29	筆界	16.32	4.93
46-3-31	筆界	5.60	1.69
	筆合	1587.17	480.09

面積 (座標法) 計算書

地番 = 46-3-20

測点名	[1] X (i)	[2] X (i+1)-X (i-1)	[3] Y (i)	[4] Y (i+1)-Y (i-1)	[2]*[3]	[1]*[4]	方向角	夾角	距離
46-3-22K	-149954.471	11.225	-41203.972	9.981	-462514.585700	-1496695.575051	358-51-02	90-01-47	11.017
46-3-9	-149943.456	10.869	-41204.193	-8.420	-447848.373717	1262523.899520	268-58-47	90-07-45	8.200
46-3-2	-149943.602	-2.188	-41212.392	-10.164	90172.713696	1524026.770728	223-53-57	134-55-10	2.834
46-3-1	-149945.644	-11.079	-41214.357	-1.782	456613.861203	267203.137608	178-50-24	134-56-27	9.039
46-3-21K	-149954.681	-8.827	-41214.174	10.385	363797.513898	-1557279.362185	88-49-15	89-58-51	10.204
合計				倍面積 面積	221.129380 110.56	-221.129380 110.56			41.294

面積 (座標法) 計算書

地番 = 46-3-21

測点名	[1] X (i)	[2] X (i+1)-X (i-1)	[3] Y (i)	[4] Y (i+1)-Y (i-1)	[2]*[3]	[1]*[4]	方向角	夾角	距離
46-3-9	-149943.456	-12.974	-41204.193	-17.271	534583.199982	2589673.428576	178-51-04	90-01-29	12.618
46-3-30	-149956.071	-23.450	-41203.940	0.463	966232.393000	-69429.660873	178-53-23	180-02-19	10.837
46-3-28	-149966.906	-22.391	-41203.730	0.429	922592.718430	-64335.802674	178-54-52	180-01-29	11.558
46-3-14	-149978.462	-11.361	-41203.511	9.754	468113.088471	-1462889.918348	88-49-42	89-54-50	9.537
46-3-44	-149978.267	8.971	-41193.976	9.362	-369551.158696	-1404096.535654	358-52-14	90-02-32	8.778
46-3-45K	-149969.491	8.929	-41194.149	7.826	-367822.556421	-1173661.236566	88-54-15	270-02-01	8.000
46-3-46K	-149969.338	26.394	-41186.150	7.480	-1087067.243100	-1121770.648240	358-52-01	89-57-46	26.246
46-3-39	-149943.097	25.882	-41186.669	-18.043	-1065993.367058	2705423.299171	268-49-35	89-57-34	17.528
合計				倍面積 面積	1087.074608 543.53	-1087.074608 543.53			105.102

面積 (座標法) 計算書

地番 = 46-3-23

測点名	[1] X (i)	[2] X (i+1)-X (i-1)	[3] Y (i)	[4] Y (i+1)-Y (i-1)	[2]*[3]	[1]*[4]	方向角	夾角	距離
46-3-43K	-149949.958	7.159	-41178.932	7.459	-294799.974188	-1118476.736722	358-51-51	89-59-15	7.011
46-3-42	-149942.948	6.861	-41179.071	-7.737	-282529.606131	1160108.588676	268-52-36	90-00-45	7.599
46-3-39	-149943.097	-7.159	-41186.669	-7.459	294855.363371	1118425.560523	178-51-51	89-59-15	7.011
46-3-41K	-149950.107	-6.861	-41186.530	7.737	282580.782330	-1160163.977859	88-52-36	90-00-45	7.599
合計				倍面積 面積	106.565382 53.28	-106.565382 53.28			29.220

面積 (座標法) 計算書

地番 = 46-3-24

測点名	[1] X (i)	[2] X (i+1)-X (i-1)	[3] Y (i)	[4] Y (i+1)-Y (i-1)	[2] * [3]	[1] * [4]	方向角	夾角	距離
46-3-42	-149942.948	-7.149	-41179.071	-7.210	294389.178579	1081088.655080	178-51-51	89-56-52	7.011
46-3-43K	-149949.958	-7.159	-41178.932	-7.459	294799.974188	1118476.736722	268-52-36	270-00-45	7.599
46-3-41K	-149950.107	-28.156	-41186.530	-7.045	1159647.938680	1056398.503815	178-52-08	89-59-32	28.012
46-3-40	-149978.114	-27.725	-41185.977	15.512	1141881.212325	-2326460.504368	88-55-12	90-03-04	14.962
46-3-6	-149977.832	3.350	-41171.018	17.907	-137922.910300	-2685653.037624	43-51-26	134-56-14	4.255
46-3-5	-149974.764	16.573	-41168.070	2.669	-682278.424110	-400282.645116	358-48-59	134-57-33	13.508
46-3-100	-149961.259	28.995	-41168.349	-0.571	-1193676.279255	85627.878889	358-55-12	180-06-13	15.493
46-3-4	-149945.769	18.450	-41168.641	-3.373	-759561.426450	505767.078837	313-51-09	134-55-57	4.272
46-3-3	-149942.809	2.821	-41171.722	-10.430	-116145.427762	1563903.497870	268-54-59	135-03-50	7.350
合計				倍面積 面積	1133.835895 566.91	-1133.835895 566.91			102.462

面積 (座標法) 計算書

地番 = 46-3-25

測点名	[1] X (i)	[2] X (i+1)-X (i-1)	[3] Y (i)	[4] Y (i+1)-Y (i-1)	[2] * [3]	[1] * [4]	方向角	夾角	距離
46-3-45K	-149969.491	-8.929	-41194.149	-7.826	367822.556421	1173661.236566	178-52-14	89-57-59	8.778
46-3-44	-149978.267	-8.623	-41193.976	8.172	355215.655048	-1225622.397924	88-54-15	90-02-01	8.000
46-3-40	-149978.114	8.929	-41185.977	7.826	-367749.588633	-1173728.720164	358-52-14	89-57-59	8.778
46-3-46K	-149969.338	8.623	-41186.150	-8.172	-355148.171450	1225549.430136	268-54-15	90-02-01	8.000
合計				倍面積 面積	140.451386 70.22	-140.451386 70.22			33.556

面積 (座標法) 計算書

地番 = 46-3-26

測点名	[1] X (i)	[2] X (i+1)-X (i-1)	[3] Y (i)	[4] Y (i+1)-Y (i-1)	[2] * [3]	[1] * [4]	方向角	夾角	距離
46-3-15K	-149969.903	-6.958	-41213.873	-10.061	286766.128334	1508847.194083	178-51-21	89-58-06	6.761
46-3-8	-149976.663	-8.721	-41213.738	2.162	359425.009098	-324249.545406	134-03-07	135-11-46	2.820
46-3-7	-149978.624	-1.799	-41211.711	10.227	74139.868089	-1533831.387648	88-52-06	134-48-59	8.202
46-3-14	-149978.462	8.919	-41203.511	8.034	-367494.114609	-1204926.963708	358-54-50	90-02-44	8.759
46-3-26K	-149969.705	8.559	-41203.677	-10.362	-352662.271443	1553986.083210	268-53-15	89-58-25	10.198
合計				倍面積 面積	174.619469 87.30	-174.619469 87.30			36.740

面積 (座標法) 計算書

地番 = 46-3-27

測点名	[1] X (i)	[2] X (i+1)-X (i-1)	[3] Y (i)	[4] Y (i+1)-Y (i-1)	[2] * [3]	[1] * [4]	方向角	夾角	距離
46-3-26K	-149969.705	2.997	-41203.677	10.143	-123487.419969	-1521142.717815	358-54-55	90-01-40	2.800
46-3-28	-149966.906	2.601	-41203.730	-10.252	-107170.901730	1537460.720312	268-53-16	89-58-21	10.201
46-3-17	-149967.104	-2.997	-41213.929	-10.143	123518.145213	1521116.335872	178-51-14	89-57-58	2.800
46-3-15K	-149969.903	-2.601	-41213.873	10.252	107197.283673	-1537491.445556	88-53-15	90-02-01	10.198
合計				倍面積 面積	57.107187 28.55	-57.107187 28.55			25.999

面積 (座標法) 計算書

地番 = 46-3-28

測点名	[1] X (i)	[2] X (i+1)-X (i-1)	[3] Y (i)	[4] Y (i+1)-Y (i-1)	[2] * [3]	[1] * [4]	方向角	夾角	距離
46-3-29K	-149966.357	10.484	-41203.741	10.000	-431980.020644	-1499663.570000	358-53-30	90-00-14	10.288
46-3-30	-149956.071	10.077	-41203.940	-10.401	-415212.103380	1559693.094471	268-49-35	89-56-05	10.204
46-3-19	-149956.280	-10.484	-41214.142	-10.000	432089.064728	1499562.800000	178-52-25	90-02-50	10.277
46-3-18K	-149966.555	-10.077	-41213.940	10.401	415312.873380	-1559802.138555	88-53-16	90-00-51	10.201
合計				倍面積 面積	209.814084 104.90	-209.814084 104.90			40.970

面積 (座標法) 計算書

地番 = 46-3-29

測点名	[1] X (i)	[2] X (i+1)-X (i-1)	[3] Y (i)	[4] Y (i+1)-Y (i-1)	[2] * [3]	[1] * [4]	方向角	夾角	距離
46-3-21K	-149954.681	-1.809	-41214.174	-10.170	74556.440766	1525039.105770	178-51-13	90-01-58	1.599
46-3-19	-149956.280	-1.390	-41214.142	10.234	57287.657380	-1534652.569520	88-49-35	89-58-22	10.204
46-3-30	-149956.071	1.809	-41203.940	10.170	-74537.927460	-1525053.242070	358-51-15	90-01-40	1.600
46-3-22K	-149954.471	1.390	-41203.972	-10.234	-57273.521080	1534634.056214	268-49-15	89-58-00	10.204
合計				倍面積 面積	32.649606 16.32	-32.649606 16.32			23.607

面積 (座標法) 計算書

地番 = 46-3-31

測点名	[1] X (i)	[2] X (i+1)-X (i-1)	[3] Y (i)	[4] Y (i+1)-Y (i-1)	[2] * [3]	[1] * [4]	方向角	夾角	距離
46-3-18K	-149966.555	-0.747	-41213.940	-10.188	30786.813180	1527859.262340	178-51-08	89-57-52	0.549
46-3-17	-149967.104	-0.351	-41213.929	10.210	14466.089079	-1531164.131840	88-53-16	90-02-08	10.201
46-3-28	-149966.906	0.747	-41203.730	10.188	-30779.186310	-1527862.838328	358-51-08	89-57-52	0.549
46-3-29K	-149966.357	0.351	-41203.741	-10.210	-14462.513091	1531156.504970	268-53-16	90-02-08	10.201
合計				倍面積 面積	11.202858 5.60	-11.202858 5.60			21.500