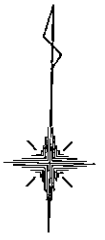
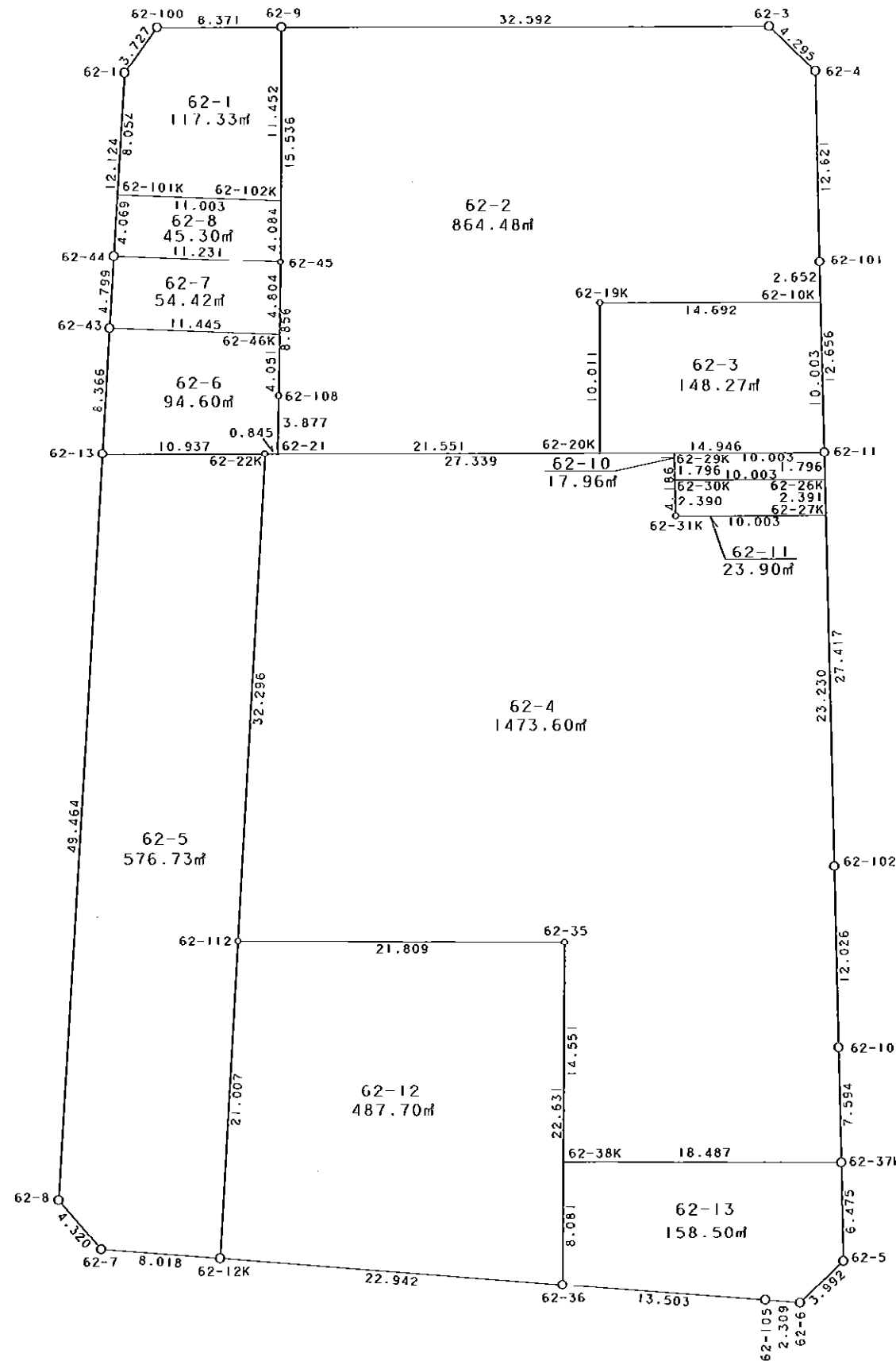


62街区



S = 1 / 400



凡 例

記号	名称
⊙	地区界点
○	街区点
○	画地点(折れ点)
└	画地点(直線中)

面積 (座標法) 計算書

地番 = 62街区

測点名	[1] X (i)	[2] X (i+1)-X (i-1)	[3] Y (i)	[4] Y (i+1)-Y (i-1)	[2]*[3]	[1]*[4]	方向角	夾角	距離
62-100	-149996.594	-3.280	-40998.772	-10.475	134475.972160	1571214.322150	214-25-40	125-50-17	3.727
62-1	-149999.668	-15.191	-41000.879	-2.508	622844.352889	376199.167344	181-53-44	147-28-04	12.124
62-44	-150011.785	-16.913	-41001.280	-0.562	693454.648640	84306.623170	181-55-22	180-01-38	4.799
62-43	-150016.581	-13.158	-41001.441	-0.429	539496.960678	64357.113249	181-50-08	179-54-46	8.366
62-13	-150024.943	-57.799	-41001.709	-1.903	2369857.778491	285497.466529	181-53-39	180-03-31	49.464
62-8	-150074.380	-52.621	-41003.344	1.284	2157636.964624	-192695.503920	137-29-11	135-35-32	4.320
62-7	-150077.564	-3.571	-41000.425	10.928	146412.517675	-1640047.619392	92-45-59	135-16-48	8.018
62-12K	-150077.951	-1.595	-40992.416	30.919	65382.903520	-4640260.166969	93-01-06	180-15-07	22.942
62-36	-150079.159	-1.915	-40969.506	36.394	78456.603990	-5461980.912646	93-00-05	179-58-59	13.503
62-105	-150079.866	-0.844	-40956.022	15.789	34566.882568	-2369611.004274	93-24-05	180-24-00	2.309
62-6	-150080.003	2.678	-40953.717	5.135	-109674.054126	-770660.815405	45-09-08	131-45-03	3.992
62-5	-150077.188	9.283	-40950.887	2.537	-380147.084021	-380745.825956	357-24-23	132-15-15	6.475
62-37K	-150070.720	14.053	-40951.180	-0.671	-575486.932540	100697.453120	357-08-49	179-44-26	7.594
62-103	-150063.135	19.598	-40951.558	-0.936	-802568.633684	140459.094360	357-20-26	180-11-37	12.026
62-102	-150051.122	39.398	-40952.116	-1.887	-1613431.466168	283146.467214	357-13-18	179-52-52	27.417
62-11	-150023.737	40.025	-40953.445	-1.956	-1639161.636125	293446.429572	357-09-37	179-56-19	12.656
62-101	-150011.097	25.247	-40954.072	-1.216	-1033967.455784	182413.493952	357-19-30	180-09-53	12.621
62-4	-149998.490	15.515	-40954.661	-3.750	-635411.565415	562494.337500	312-36-46	135-17-16	4.295
62-3	-149995.582	2.102	-40957.822	-35.743	-86093.341844	5361292.087426	268-34-59	135-58-13	32.592
62-9	-149996.388	-1.012	-40990.404	-40.950	41482.288848	6142352.088600	268-35-23	180-00-24	8.371
合計				倍面積 面積	8125.704376 4062.85	-8125.704376 4062.85			257.611

地番	筆種別	面積	坪数
62-1	筆界	117.33	35.49
62-2	筆界	864.48	261.50
62-3	筆界	148.27	44.85
62-4	筆界	1473.60	445.76
62-5	筆界	576.73	174.46
62-6	筆界	94.60	28.61
62-7	筆界	54.42	16.46
62-8	筆界	45.30	13.70
62-10	筆界	17.96	5.43
62-11	筆界	23.90	7.23
62-12	筆界	487.70	147.53
62-13	筆界	158.50	47.94
	筆合	4062.79	1228.96

面積 (座標法) 計算書

地番 = 62-1
測点名

	[1] X (i)	[2] X (i+1)-X (i-1)	[3] Y (i)	[4] Y (i+1)-Y (i-1)	[2]*[3]	[1]*[4]	方向角	夾角	距離
62-101K	-150007.718	-8.169	-41001.145	10.736	334938.353505	-1610482.860448	90-37-11	88-43-38	11.003
62-102K	-150007.837	11.330	-40990.143	10.741	-464418.320190	-1611234.177217	358-41-39	88-04-28	11.452
62-9	-149996.388	11.243	-40990.404	-8.629	-460855.112172	1294318.832052	268-35-23	89-53-44	8.371
62-100	-149996.594	-3.280	-40998.772	-10.475	134475.972160	1571214.322150	214-25-40	125-50-17	3.727
62-1	-149999.668	-11.124	-41000.879	-2.373	456093.777996	355949.212164	181-53-33	147-27-53	8.054
合計				倍面積 面積	234.671299 117.33	-234.671299 117.33			42.607

面積 (座標法) 計算書

地番 = 62-2
測点名

	[1] X (i)	[2] X (i+1)-X (i-1)	[3] Y (i)	[4] Y (i+1)-Y (i-1)	[2]*[3]	[1]*[4]	方向角	夾角	距離
62-9	-149996.388	-16.338	-40990.404	-32.228	669701.220552	4834083.592464	178-41-40	90-06-41	15.536
62-45	-150011.920	-24.387	-40990.050	0.451	999624.349350	-67655.375920	179-22-21	180-40-41	8.856
62-108	-150020.775	-12.732	-40989.953	0.120	521884.081596	-18002.493000	179-39-36	180-17-15	3.877
62-21	-150024.652	-3.337	-40989.930	21.567	136783.396410	-3235581.669684	88-33-51	88-54-15	21.551
62-20K	-150024.112	10.548	-40968.386	21.301	-432134.535528	-3195663.609712	358-36-33	90-02-42	10.011
62-19K	-150014.104	10.366	-40968.629	14.445	-424680.808214	-2166953.732280	88-36-14	269-59-41	14.692
62-10K	-150013.746	3.007	-40953.941	14.557	-123148.500587	-2183750.100522	357-10-08	88-33-54	2.652
62-101	-150011.097	15.256	-40954.072	-0.720	-624795.322432	108007.989840	357-19-30	180-09-22	12.621
62-4	-149998.490	15.515	-40954.661	-3.750	-635411.565415	562494.337500	312-36-46	135-17-16	4.295
62-3	-149995.582	2.102	-40957.822	-35.743	-86093.341844	5361292.087426	268-34-59	135-58-13	32.592
合計				倍面積 面積	1728.973888 864.48	-1728.973888 864.48			126.683

面積 (座標法) 計算書

地番 = 62-3
測点名

	[1] X (i)	[2] X (i+1)-X (i-1)	[3] Y (i)	[4] Y (i+1)-Y (i-1)	[2]*[3]	[1]*[4]	方向角	夾角	距離
62-20K	-150024.112	-9.633	-40968.386	15.184	394648.462338	-2277966.116608	88-33-44	89-57-11	14.946
62-11	-150023.737	10.366	-40953.445	14.445	-424523.410870	-2167092.880965	357-09-28	88-35-44	10.003
62-10K	-150013.746	9.633	-40953.941	-15.184	-394509.313653	2277808.719264	268-36-14	91-26-46	14.692
62-19K	-150014.104	-10.366	-40968.629	-14.445	424680.808214	2166953.732280	178-36-33	90-00-19	10.011
合計				倍面積 面積	296.546029 148.27	-296.546029 148.27			49.652

面積 (座標法) 計算書

地番 = 62-4
測点名

	[1] X (i)	[2] X (i+1)-X (i-1)	[3] Y (i)	[4] Y (i+1)-Y (i-1)	[2]*[3]	[1]*[4]	方向角	夾角	距離
62-22K	-150024.673	-32.966	-40990.775	-28.307	1351301.888650	4246748.418611	181-44-01	93-10-10	32.296
62-112	-150056.954	-31.859	-40991.752	20.828	1305956.226968	-3125386.237912	88-53-29	87-09-28	21.809
62-35	-150056.532	-14.126	-40969.947	22.089	578741.471322	-3314598.735348	178-52-54	269-59-25	14.551
62-38K	-150071.080	-14.188	-40969.663	18.767	581277.578644	-2816383.958360	88-53-03	90-00-09	18.487
62-37K	-150070.720	7.945	-40951.180	18.105	-325357.125100	-2717030.385600	357-08-49	88-15-46	7.594
62-103	-150063.135	19.598	-40951.558	-0.936	-802568.633684	140459.094360	357-20-26	180-11-37	12.026
62-102	-150051.122	35.216	-40952.116	-1.684	-1442169.717056	252686.089448	357-13-18	179-52-52	23.230
62-27K	-150027.919	22.953	-40953.242	-11.126	-939999.763626	1669210.626794	268-34-04	91-20-46	10.003
62-31K	-150028.169	3.931	-40963.242	-10.203	-161026.504302	1530737.408307	357-13-13	268-39-09	4.186
62-29K	-150023.988	3.496	-40963.445	-27.533	-143208.203720	4130610.461604	268-33-51	91-20-38	27.339
合計				倍面積 面積	2947.218096 1473.60	-2947.218096 1473.60			171.521

面積 (座標法) 計算書

地番 = 62-5
測点名

	[1] X (i)	[2] X (i+1)-X (i-1)	[3] Y (i)	[4] Y (i+1)-Y (i-1)	[2]*[3]	[1]*[4]	方向角	夾角	距離
62-13	-150024.943	-49.707	-41001.709	-12.569	2038071.949263	1885663.508567	181-53-39	93-18-31	49.464
62-8	-150074.380	-52.621	-41003.344	1.284	2157636.964624	-192695.503920	137-29-11	135-35-32	4.320
62-7	-150077.564	-3.571	-41000.425	10.928	146412.517675	-1640047.619392	92-45-59	135-16-48	8.018
62-12K	-150077.951	20.610	-40992.416	8.673	-844853.693760	-1301626.069023	1-48-41	89-02-42	21.007
62-112	-150056.954	53.278	-40991.752	1.641	-2183958.563056	-246243.461514	1-44-01	179-55-20	32.296
62-22K	-150024.673	32.011	-40990.775	-9.957	-1312155.698525	1493795.669061	268-35-08	86-51-07	10.937
合計				倍面積 面積	1153.476221 576.73	-1153.476221 576.73			126.042

面積 (座標法) 計算書

地番 = 62-6
測点名

	[1] X (i)	[2] X (i+1)-X (i-1)	[3] Y (i)	[4] Y (i+1)-Y (i-1)	[2]*[3]	[1]*[4]	方向角	夾角	距離
62-43	-150016.581	-8.219	-41001.441	-11.712	336990.843579	1756994.196672	181-50-08	91-07-11	8.366
62-13	-150024.943	-8.092	-41001.709	10.666	331785.829228	-1600166.042038	88-35-08	86-45-00	10.937
62-22K	-150024.673	0.291	-40990.775	11.779	-11928.315525	-1767140.623267	88-34-35	179-59-27	0.845
62-21	-150024.652	3.898	-40989.930	0.822	-159778.747140	-123320.263944	359-39-36	91-05-01	3.877
62-108	-150020.775	7.928	-40989.953	-0.067	-324968.347384	10051.391925	359-22-40	179-43-04	4.051
62-46K	-150016.724	4.194	-40989.997	-11.488	-171912.047418	1723392.125312	270-42-57	91-20-17	11.445
合計				倍面積 面積	189.215340 94.60	-189.215340 94.60			39.521

面積 (座標法) 計算書

地番 = 62-7

測点名	[1] X (i)	[2] X (i+1)-X (i-1)	[3] Y (i)	[4] Y (i+1)-Y (i-1)	[2] * [3]	[1] * [4]	方向角	夾角	距離
62-43	-150016.581	-4.939	-41001.441	11.283	202506.117099	-1692637.083423	90-42-57	88-47-35	11.445
62-46K	-150016.724	4.661	-40989.997	11.391	-191054.376017	-1708840.503084	359-22-04	88-39-07	4.804
62-45	-150011.920	4.939	-40990.050	-11.283	-202449.856950	1692584.493360	270-41-19	91-19-15	11.231
62-44	-150011.785	-4.661	-41001.280	-11.391	191106.966080	1708784.242935	181-55-22	91-14-03	4.799
合計				倍面積 面積	108.850212 54.42	-108.850212 54.42			32.279

面積 (座標法) 計算書

地番 = 62-8

測点名	[1] X (i)	[2] X (i+1)-X (i-1)	[3] Y (i)	[4] Y (i+1)-Y (i-1)	[2] * [3]	[1] * [4]	方向角	夾角	距離
62-101K	-150007.718	-3.948	-41001.145	-11.137	161872.520460	1670635.955366	181-54-04	91-16-53	4.069
62-44	-150011.785	-4.202	-41001.280	11.095	172287.378560	-1664380.754575	90-41-19	88-47-15	11.231
62-45	-150011.920	3.948	-40990.050	11.137	-161828.717400	-1670682.753040	358-41-43	88-00-24	4.084
62-102K	-150007.837	4.202	-40990.143	-11.095	-172240.580886	1664336.951515	270-37-11	91-55-28	11.003
合計				倍面積 面積	90.600734 45.30	-90.600734 45.30			30.387

面積 (座標法) 計算書

地番 = 62-10

測点名	[1] X (i)	[2] X (i+1)-X (i-1)	[3] Y (i)	[4] Y (i+1)-Y (i-1)	[2] * [3]	[1] * [4]	方向角	夾角	距離
62-26K	-150025.531	2.045	-40953.358	9.913	-83749.617110	-1487203.088803	357-13-25	88-39-41	1.796
62-11	-150023.737	1.543	-40953.445	-10.087	-63191.165635	1513289.435119	268-33-44	91-20-19	10.003
62-29K	-150023.988	-2.045	-40963.445	-9.913	83770.245025	1487187.793044	177-13-25	88-39-41	1.796
62-30K	-150025.782	-1.543	-40963.358	10.087	63206.461394	-1513310.063034	88-33-44	91-20-19	10.003
合計				倍面積 面積	35.923674 17.96	-35.923674 17.96			23.598

面積 (座標法) 計算書

地番 = 62-11

測点名	[1] X (i)	[2] X (i+1)-X (i-1)	[3] Y (i)	[4] Y (i+1)-Y (i-1)	[2] * [3]	[1] * [4]	方向角	夾角	距離
62-27K	-150027.919	2.638	-40953.242	9.884	-108034.652396	-1482875.951396	357-13-08	88-39-04	2.391
62-26K	-150025.531	2.137	-40953.358	-10.116	-87517.326046	1517658.271596	268-33-44	91-20-36	10.003
62-30K	-150025.782	-2.638	-40963.358	-9.884	108061.338404	1482854.829288	177-13-04	88-39-20	2.390
62-31K	-150028.169	-2.137	-40963.242	10.116	87538.448154	-1517684.957604	88-34-04	91-21-00	10.003
合計				倍面積 面積	47.808116 23.90	-47.808116 23.90			24.787

面積 (座標法) 計算書

地番 = 62-12

測点名	[1] X (i)	[2] X (i+1)-X (i-1)	[3] Y (i)	[4] Y (i+1)-Y (i-1)	[2] * [3]	[1] * [4]	方向角	夾 角	距 離
62-112	-150056.954	-21.419	-40991.752	-22.469	878002.336088	3371629.699426	181-48-41	92-55-12	21.007
62-12K	-150077.951	-22.205	-40992.416	22.246	910236.597280	-3338634.097946	93-01-06	91-12-25	22.942
62-36	-150079.159	21.419	-40969.506	22.469	-877525.849014	-3372128.623571	358-53-00	85-51-54	22.631
62-35	-150056.532	22.205	-40969.947	-22.246	-909737.673135	3338157.610872	268-53-29	90-00-29	21.809
合計				倍面積 面積	975.411219 487.70	-975.411219 487.70			88.389

面積 (座標法) 計算書

地番 = 62-13

測点名	[1] X (i)	[2] X (i+1)-X (i-1)	[3] Y (i)	[4] Y (i+1)-Y (i-1)	[2] * [3]	[1] * [4]	方向角	夾 角	距 離
62-38K	-150071.080	-8.439	-40969.663	-18.326	345742.986057	2750202.612080	178-53-12	90-00-09	8.081
62-36	-150079.159	-8.786	-40969.506	13.641	359958.079716	-2047229.807919	93-00-05	94-06-53	13.503
62-105	-150079.866	-0.844	-40956.022	15.789	34566.882568	-2369611.004274	93-24-05	180-24-00	2.309
62-6	-150080.003	2.678	-40953.717	5.135	-109674.054126	-770660.815405	45-09-08	131-45-03	3.992
62-5	-150077.188	9.283	-40950.887	2.537	-380147.084021	-380745.825956	357-24-23	132-15-15	6.475
62-37K	-150070.720	6.108	-40951.180	-18.776	-250129.807440	2817727.838720	268-53-03	91-28-40	18.487
合計				倍面積 面積	317.002754 158.50	-317.002754 158.50			52.847