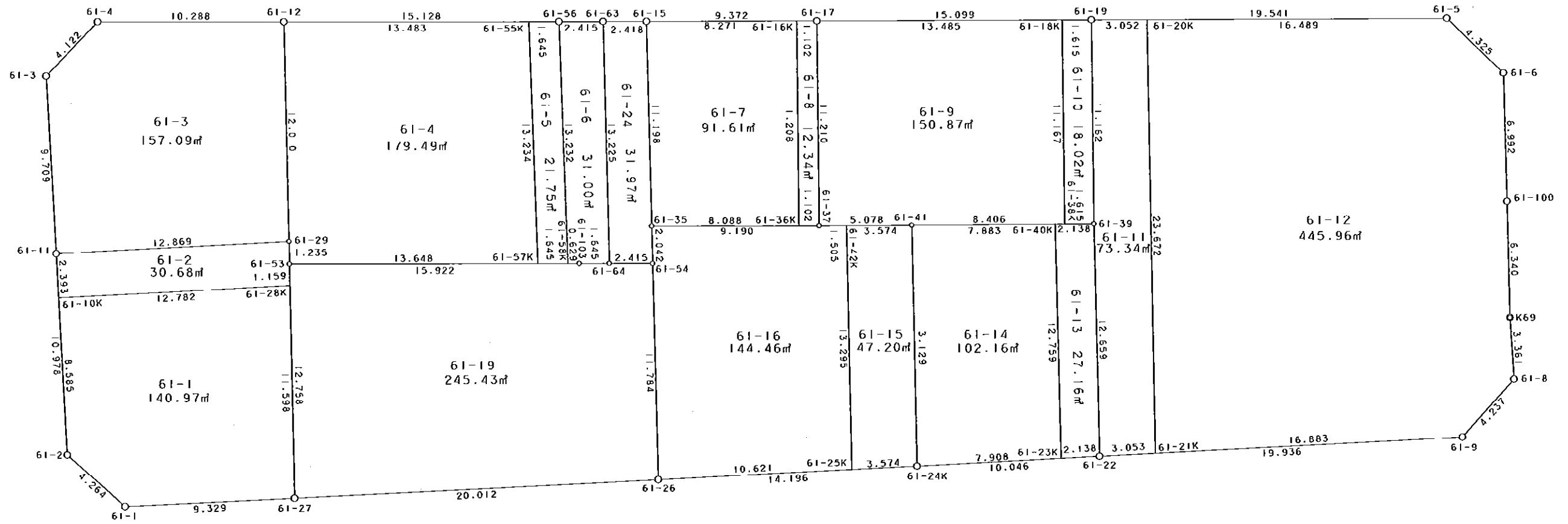


61街区



S = 1 / 250



凡 例

記号	名称
⊙	地区界点
○	街区点
○	画地点(折れ点)
┆	画地点(直線中)

面積 (座標法) 計算書

地番 = 61街区

測点名	[1] X (i)	[2] X (i+1)-X (i-1)	[3] Y (i)	[4] Y (i+1)-Y (i-1)	[2] * [3]	[1] * [4]	方向角	夾角	距離
61-2	-149997.393	-3.409	-41029.460	-13.879	139869.429140	2081813.817447	222-56-50	134-27-02	4.264
61-1	-150000.514	-12.449	-41032.365	-2.760	510811.911885	414001.418640	179-06-34	136-09-44	9.329
61-27	-150009.842	-29.337	-41032.220	0.465	1203762.238140	-69754.576530	179-05-02	179-58-28	20.012
61-26	-150029.851	-34.203	-41031.900	0.544	1403414.075700	-81616.238944	179-05-45	180-00-43	14.196
61-24K	-150044.045	-24.239	-41031.676	0.392	994566.794564	-58817.265640	179-02-31	179-56-46	10.046
61-22	-150054.090	-29.979	-41031.508	0.472	1230083.578332	-70825.530480	179-07-35	180-05-04	19.936
61-9	-150074.024	-22.877	-41031.204	3.352	938670.853908	-503048.128448	133-59-45	134-52-10	4.237
61-8	-150076.967	-2.842	-41028.156	6.407	116602.019352	-961543.127569	88-16-40	134-16-55	3.361
K69	-150076.866	0.031	-41024.797	9.699	-1271.768707	-1455595.523334	90-37-57	182-21-17	6.340
61-100	-150076.936	-0.128	-41018.457	13.332	5250.362496	-2000825.710752	90-28-31	179-50-34	6.992
61-6	-150076.994	2.932	-41011.465	10.117	-120245.615380	-1518328.948298	46-15-53	135-47-22	4.325
61-5	-150074.004	22.520	-41008.340	3.774	-923507.816800	-566379.291096	1-54-12	135-38-19	19.541
61-19	-150054.474	34.621	-41007.691	1.155	-1419727.270111	-173312.917470	1-55-13	180-01-01	15.099
61-17	-150039.383	24.458	-41007.185	0.815	-1002953.730730	-122282.097145	1-53-22	179-58-09	9.372
61-15	-150030.016	11.784	-41006.876	0.388	-483225.026784	-58211.646208	1-52-19	179-58-57	2.418
61-63	-150027.599	4.831	-41006.797	0.156	-198103.836307	-23404.305444	1-49-37	179-57-18	2.415
61-56	-150025.185	17.534	-41006.720	0.579	-719011.828480	-86864.582115	1-54-06	180-04-29	15.128
61-12	-150010.065	25.402	-41006.218	0.843	-1041639.949636	-126458.484795	1-53-58	179-59-52	10.288
61-4	-149999.783	13.209	-41005.877	-2.562	-541646.629293	384299.444046	315-14-09	133-20-11	4.122
61-3	-149996.856	2.678	-41008.780	-12.609	-109821.512840	1891310.357304	268-31-50	133-17-41	9.709
61-11	-149997.105	-0.537	-41018.486	-20.680	22026.926982	3101940.131400	268-29-48	179-57-58	10.978
合計				倍面積 面積	3903.205431 1951.60	-3903.205431 1951.60			202.108

地番	筆種別	面積	坪数
61-1	筆界	140.97	42.64
61-2	筆界	30.68	9.28
61-3	筆界	157.09	47.52
61-4	筆界	179.49	54.29
61-5	筆界	21.75	6.57
61-6	筆界	31.00	9.37
61-7	筆界	91.61	27.71
61-8	筆界	12.34	3.73
61-9	筆界	150.87	45.63
61-10	筆界	18.02	5.45
61-11	筆界	73.34	22.18
61-12	筆界	445.96	134.90
61-13	筆界	27.16	8.21
61-14	筆界	102.16	30.90
61-15	筆界	47.20	14.28
61-16	筆界	144.46	43.69
61-19	筆界	245.43	74.24
61-24	筆界	31.97	9.67
	筆合	1951.50	590.26

面積 (座標法) 計算書

地番 = 61-1
測点名

	[1] X (i)	[2] X (i+1)-X (i-1)	[3] Y (i)	[4] Y (i+1)-Y (i-1)	[2]*[3]	[1]*[4]	方向角	夾角	距離
61-10K	-149997.168	12.554	-41020.878	-8.838	-514976.102412	1325674.970784	268-29-53	89-38-45	8.585
61-2	-149997.393	-3.346	-41029.460	-11.487	137284.573160	1723020.053391	222-56-50	134-26-57	4.264
61-1	-150000.514	-12.449	-41032.365	-2.760	510811.911885	414001.418640	179-06-34	136-09-44	9.329
61-27	-150009.842	-9.433	-41032.220	11.743	387056.931260	-1761565.574606	90-31-07	91-24-33	11.598
61-28K	-150009.947	12.674	-41020.622	11.342	-519895.363228	-1701412.818874	358-51-08	88-20-01	12.782
合計				倍面積 面積	281.950665 140.97	-281.950665 140.97			46.558

面積 (座標法) 計算書

地番 = 61-2
測点名

	[1] X (i)	[2] X (i+1)-X (i-1)	[3] Y (i)	[4] Y (i+1)-Y (i-1)	[2]*[3]	[1]*[4]	方向角	夾角	距離
61-28K	-150009.947	-12.790	-41020.622	1.415	524653.755380	-212264.075005	90-32-38	91-41-30	1.159
61-53	-150009.958	-0.024	-41019.463	2.394	984.467112	-359123.839452	90-36-11	180-03-33	1.235
61-29	-150009.971	12.853	-41018.228	0.977	-527207.284484	-146559.741667	358-51-04	88-14-53	12.869
61-11	-149997.105	12.803	-41018.486	-2.650	-525159.676258	397492.328250	268-29-29	89-38-25	2.393
61-10K	-149997.168	-12.842	-41020.878	-2.136	526790.115276	320393.950848	178-51-08	90-21-39	12.782
合計				倍面積 面積	61.377026 30.68	-61.377026 30.68			30.438

面積 (座標法) 計算書

地番 = 61-3
測点名

	[1] X (i)	[2] X (i+1)-X (i-1)	[3] Y (i)	[4] Y (i+1)-Y (i-1)	[2]*[3]	[1]*[4]	方向角	夾角	距離
61-11	-149997.105	-13.115	-41018.486	-9.448	537957.443890	1417172.648040	178-51-04	90-19-14	12.869
61-29	-150009.971	-12.960	-41018.228	12.268	531596.234880	-1840322.324228	90-26-54	91-35-50	12.010
61-12	-150010.065	10.188	-41006.218	12.351	-417771.348984	-1852774.312815	1-53-58	91-27-04	10.288
61-4	-149999.783	13.209	-41005.877	-2.562	-541646.629293	384299.444046	315-14-09	133-20-11	4.122
61-3	-149996.856	2.678	-41008.780	-12.609	-109821.512840	1891310.357304	268-31-50	133-17-41	9.709
合計				倍面積 面積	314.187653 157.09	-314.187653 157.09			48.998

面積 (座標法) 計算書

地番 = 61-4
測点名

	[1] X (i)	[2] X (i+1)-X (i-1)	[3] Y (i)	[4] Y (i+1)-Y (i-1)	[2]*[3]	[1]*[4]	方向角	夾角	距離
61-55K	-150023.541	13.534	-41006.665	13.681	-554984.204110	-2052472.064421	1-53-59	92-09-03	13.483
61-12	-150010.065	13.570	-41006.218	-11.563	-556454.378260	1734566.381595	270-26-54	88-32-55	12.010
61-29	-150009.971	0.107	-41018.228	-13.245	-4388.950396	1986882.065895	270-36-11	180-09-17	1.235
61-53	-150009.958	-13.628	-41019.463	-1.671	559013.241764	250666.639818	181-49-50	91-13-39	13.648
61-57K	-150023.599	-13.583	-41019.899	12.798	557173.288117	-1920002.020002	89-44-56	87-55-06	13.234
合計				倍面積 面積	358.997115 179.49	-358.997115 179.49			53.610

面積 (座標法) 計算書

地番 = 61-5
測点名

	[1] X (i)	[2] X (i+1)-X (i-1)	[3] Y (i)	[4] Y (i+1)-Y (i-1)	[2]*[3]	[1]*[4]	方向角	夾角	距離
61-57K	-150023.599	-1.702	-41019.899	-13.287	69815.868098	1993363.559913	181-50-47	92-05-51	1.645
61-58K	-150025.243	-1.586	-41019.952	13.179	65057.643872	-1977182.677497	89-44-56	87-54-09	13.232
61-56	-150025.185	1.702	-41006.720	13.287	-69793.437440	-1993384.633095	1-54-58	92-10-02	1.645
61-55K	-150023.541	1.586	-41006.665	-13.179	-65036.570690	1977160.246839	269-44-56	87-49-58	13.234
合計				倍面積 面積	43.503840 21.75	-43.503840 21.75			29.756

面積 (座標法) 計算書

地番 = 61-6
測点名

	[1] X (i)	[2] X (i+1)-X (i-1)	[3] Y (i)	[4] Y (i+1)-Y (i-1)	[2]*[3]	[1]*[4]	方向角	夾角	距離
61-56	-150025.185	2.356	-41006.720	-13.155	-96611.832320	1973581.308675	269-44-56	87-55-19	13.232
61-58K	-150025.243	-0.687	-41019.952	-13.252	28180.707024	1988134.520236	181-49-16	92-04-20	0.629
61-103	-150025.872	-2.273	-41019.972	-0.070	93238.396356	10501.811040	181-44-31	179-55-15	1.645
61-64	-150027.516	-1.727	-41020.022	13.175	70841.577994	-1976612.523300	90-21-34	88-37-03	13.225
61-63	-150027.599	2.331	-41006.797	13.302	-95586.843807	-1995667.121898	1-49-37	91-28-03	2.415
合計				倍面積 面積	62.005247 31.00	-62.005247 31.00			31.146

面積 (座標法) 計算書

地番 = 61-7
測点名

	[1] X (i)	[2] X (i+1)-X (i-1)	[3] Y (i)	[4] Y (i+1)-Y (i-1)	[2]*[3]	[1]*[4]	方向角	夾角	距離
61-16K	-150038.282	8.011	-41007.149	11.478	-328508.270639	-1722139.400796	1-53-30	90-35-17	8.271
61-15	-150030.016	8.338	-41006.876	-10.925	-341915.332088	1639077.924800	270-22-06	88-28-36	11.198
61-35	-150029.944	-8.011	-41018.074	-11.478	328595.790814	1722043.697232	181-59-02	91-36-56	8.088
61-36K	-150038.027	-8.338	-41018.354	10.925	342011.035652	-1639165.444975	91-18-13	89-19-11	11.208
合計				倍面積 面積	183.223739 91.61	-183.223739 91.61			38.765

面積 (座標法) 計算書

地番 = 61-8
測点名

	[1] X (i)	[2] X (i+1)-X (i-1)	[3] Y (i)	[4] Y (i+1)-Y (i-1)	[2]*[3]	[1]*[4]	方向角	夾角	距離
61-36K	-150038.027	-0.846	-41018.354	-11.243	34701.527484	1686877.537561	181-58-36	90-40-23	1.102
61-37	-150039.128	-1.356	-41018.392	11.169	55620.939552	-1675787.020632	91-18-12	89-19-36	11.210
61-17	-150039.383	0.846	-41007.185	11.243	-34692.078510	-1686892.783069	1-52-22	90-34-10	1.102
61-16K	-150038.282	1.356	-41007.149	-11.169	-55605.694044	1675777.571658	271-18-13	89-25-51	11.208
合計				倍面積 面積	24.694482 12.34	-24.694482 12.34			24.622

面積 (座標法) 計算書

地番 = 61-9
測点名

	[1] X (i)	[2] X (i+1)-X (i-1)	[3] Y (i)	[4] Y (i+1)-Y (i-1)	[2]*[3]	[1]*[4]	方向角	夾角	距離
61-18K	-150052.860	13.223	-41007.637	11.616	-542243.984051	-1743014.021760	1-55-15	90-37-03	13.485
61-17	-150039.383	13.732	-41007.185	-10.755	-563110.664420	1613673.564165	271-18-12	89-22-57	11.210
61-37	-150039.128	-4.821	-41018.392	-11.363	197749.667832	1704894.611464	181-45-37	90-27-25	5.078
61-41	-150044.204	-13.478	-41018.548	-0.409	552847.989944	61368.079436	181-43-29	179-57-52	8.406
61-38K	-150052.606	-8.656	-41018.801	10.911	355058.741456	-1637223.984066	91-18-12	89-34-43	11.167
合計				倍面積 面積	301.750761 150.87	-301.750761 150.87			49.346

面積 (座標法) 計算書

地番 = 61-10
測点名

	[1] X (i)	[2] X (i+1)-X (i-1)	[3] Y (i)	[4] Y (i+1)-Y (i-1)	[2]*[3]	[1]*[4]	方向角	夾角	距離
61-38K	-150052.606	-1.360	-41018.801	-11.213	55785.569360	1682539.871078	181-44-20	90-26-08	1.615
61-39	-150054.220	-1.868	-41018.850	11.110	76623.211800	-1667102.384200	91-18-14	89-33-54	11.162
61-19	-150054.474	1.360	-41007.691	11.213	-55770.459760	-1682560.816962	1-54-58	90-36-44	1.615
61-18K	-150052.860	1.868	-41007.637	-11.110	-76602.265916	1667087.274600	271-18-12	89-23-14	11.167
合計				倍面積 面積	36.055484 18.02	-36.055484 18.02			25.559

面積 (座標法) 計算書

地番 = 61-11
測点名

	[1] X (i)	[2] X (i+1)-X (i-1)	[3] Y (i)	[4] Y (i+1)-Y (i-1)	[2]*[3]	[1]*[4]	方向角	夾角	距離
61-20K	-150057.524	2.669	-41007.792	23.770	-109449.796848	-3566867.345480	1-53-48	90-58-28	3.052
61-19	-150054.474	3.304	-41007.691	-11.058	-135489.411064	1659302.373492	271-18-14	89-24-26	11.162
61-39	-150054.220	0.384	-41018.850	-23.817	-15751.238400	3573841.357740	270-35-18	179-17-04	12.659
61-22	-150054.090	-2.923	-41031.508	-12.611	119935.097884	1892332.128990	179-07-05	88-31-47	3.053
61-21K	-150057.143	-3.434	-41031.461	23.716	140902.037074	-3558755.203388	90-55-20	91-48-15	23.672
合計				倍面積 面積	146.688646 73.34	-146.688646 73.34			53.598

面積 (座標法) 計算書

地番 = 61-12
測点名

	[1] X (i)	[2] X (i+1)-X (i-1)	[3] Y (i)	[4] Y (i+1)-Y (i-1)	[2]*[3]	[1]*[4]	方向角	夾角	距離
61-21K	-150057.143	-16.500	-41031.461	-23.412	677019.106500	3513137.831916	179-07-40	88-12-20	16.883
61-9	-150074.024	-19.824	-41031.204	3.305	813402.588096	-495994.649320	133-59-45	134-52-05	4.237
61-8	-150076.967	-2.842	-41028.156	6.407	116602.019352	-961543.127569	88-16-40	134-16-55	3.361
K69	-150076.866	0.031	-41024.797	9.699	-1271.768707	-1455595.523334	90-37-57	182-21-17	6.340
61-100	-150076.936	-0.128	-41018.457	13.332	5250.362496	-2000825.710752	90-28-31	179-50-34	6.992
61-6	-150076.994	2.932	-41011.465	10.117	-120245.615380	-1518328.948298	46-15-53	135-47-22	4.325
61-5	-150074.004	19.470	-41008.340	3.673	-798432.379800	-551221.816692	1-54-16	135-38-23	16.489
61-20K	-150057.524	16.861	-41007.792	-23.121	-691432.380912	3469480.012404	270-55-20	89-01-04	23.672
合計				倍面積 面積	891.931645 445.96	-891.931645 445.96			82.299

面積 (座標法) 計算書

地番 = 61-13

測点名	[1] X (i)	[2] X (i+1)-X (i-1)	[3] Y (i)	[4] Y (i+1)-Y (i-1)	[2] * [3]	[1] * [4]	方向角	夾角	距離
61-23K	-150051.952	-2.007	-41031.544	-12.722	82350.308808	1908960.933344	179-02-07	88-26-49	2.138
61-22	-150054.090	-2.268	-41031.508	12.694	93059.460144	-1904786.618460	90-35-18	91-33-11	12.659
61-39	-150054.220	2.007	-41018.850	12.722	-82324.831950	-1908989.786840	1-42-55	91-07-37	2.138
61-40K	-150052.083	2.268	-41018.786	-12.694	-93030.606648	1904761.141602	270-35-18	88-52-23	12.759
合計				倍面積 面積	54.330354 27.16	-54.330354 27.16			29.694

面積 (座標法) 計算書

地番 = 61-14

測点名	[1] X (i)	[2] X (i+1)-X (i-1)	[3] Y (i)	[4] Y (i+1)-Y (i-1)	[2] * [3]	[1] * [4]	方向角	夾角	距離
61-40K	-150052.083	7.748	-41018.786	12.996	-317813.553928	-1950076.870668	1-43-49	91-08-31	7.883
61-41	-150044.204	8.038	-41018.548	-12.890	-329707.088824	1934069.789560	270-41-38	88-57-49	13.129
61-24K	-150044.045	-7.748	-41031.676	-12.996	317913.425648	1949972.408820	179-02-37	88-20-59	7.908
61-23K	-150051.952	-8.038	-41031.544	12.890	329811.550672	-1934169.661280	90-35-18	91-32-41	12.759
合計				倍面積 面積	204.333568 102.16	-204.333568 102.16			41.679

面積 (座標法) 計算書

地番 = 61-15

測点名	[1] X (i)	[2] X (i+1)-X (i-1)	[3] Y (i)	[4] Y (i+1)-Y (i-1)	[2] * [3]	[1] * [4]	方向角	夾角	距離
61-25K	-150040.471	-3.413	-41031.732	-13.238	140041.301316	1986235.755098	179-06-08	88-24-30	3.574
61-24K	-150044.045	-3.733	-41031.676	13.184	153171.246508	-1978180.689280	90-41-38	91-35-30	13.129
61-41	-150044.204	3.413	-41018.548	13.238	-139996.304324	-1986285.172552	1-45-50	91-04-12	3.574
61-42K	-150040.632	3.733	-41018.438	-13.184	-153121.829054	1978135.692288	270-41-38	88-55-48	13.295
合計				倍面積 面積	94.414446 47.20	-94.414446 47.20			33.572

面積 (座標法) 計算書

地番 = 61-16

測点名	[1] X (i)	[2] X (i+1)-X (i-1)	[3] Y (i)	[4] Y (i+1)-Y (i-1)	[2] * [3]	[1] * [4]	方向角	夾角	距離
61-42K	-150040.632	1.343	-41018.438	13.340	-55087.762234	-2001542.030880	1-45-07	91-03-29	1.505
61-37	-150039.128	10.688	-41018.392	0.364	-438404.573696	-54614.242592	1-58-59	180-13-52	9.190
61-35	-150029.944	9.199	-41018.074	-1.724	-377325.262726	258651.623456	270-25-15	88-26-16	2.042
61-54	-150029.929	0.093	-41020.116	-13.826	-3814.870788	2074313.798354	270-22-45	179-57-30	11.784
61-26	-150029.851	-10.542	-41031.900	-11.616	432558.289800	1742746.749216	179-05-37	88-42-52	10.621
61-25K	-150040.471	-10.781	-41031.732	13.462	442363.102692	-2019844.820602	90-41-38	91-36-01	13.295
合計				倍面積 面積	288.923048 144.46	-288.923048 144.46			48.437

面積 (座標法) 計算書

地番 = 61-19

測点名	[1] X (i)	[2] X (i+1)-X (i-1)	[3] Y (i)	[4] Y (i+1)-Y (i-1)	[2]*[3]	[1]*[4]	方向角	夾角	距離
61-27	-150009.842	-19.893	-41032.220	-12.437	816253.952460	1865672.404954	179-05-02	88-33-46	20.012
61-26	-150029.851	-20.087	-41031.900	12.104	824207.775300	-1815961.316504	90-22-45	91-17-43	11.784
61-54	-150029.929	2.335	-41020.116	11.878	-95781.970860	-1782055.496662	2-13-51	91-51-06	2.415
61-64	-150027.516	4.057	-41020.022	0.144	-166418.229254	-21603.962304	1-44-31	179-30-40	1.645
61-103	-150025.872	17.558	-41019.972	0.559	-720228.668376	-83864.462448	1-49-55	180-05-24	15.922
61-53	-150009.958	16.030	-41019.463	-12.248	-657541.991890	1837321.965584	270-31-16	88-41-21	12.758
合計					490.867380	-490.867380			64.536
				倍面積 面積	245.43	245.43			

面積 (座標法) 計算書

地番 = 61-24

測点名	[1] X (i)	[2] X (i+1)-X (i-1)	[3] Y (i)	[4] Y (i+1)-Y (i-1)	[2]*[3]	[1]*[4]	方向角	夾角	距離
61-64	-150027.516	-2.330	-41020.022	-13.319	95576.651260	1998216.485604	182-13-51	91-52-17	2.415
61-54	-150029.929	-2.428	-41020.116	1.948	99596.841648	-292258.301692	90-25-15	88-11-24	2.042
61-35	-150029.944	-0.087	-41018.074	13.240	3568.572438	-1986396.458560	90-22-06	179-56-51	11.198
61-15	-150030.016	2.345	-41006.876	11.277	-96161.124220	-1691888.490432	1-52-19	91-30-13	2.418
61-63	-150027.599	2.500	-41006.797	-13.146	-102516.992500	1972262.816454	270-21-34	88-29-15	13.225
合計					63.948626	-63.948626			31.298
				倍面積 面積	31.97	31.97			