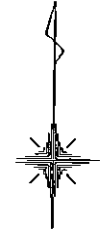
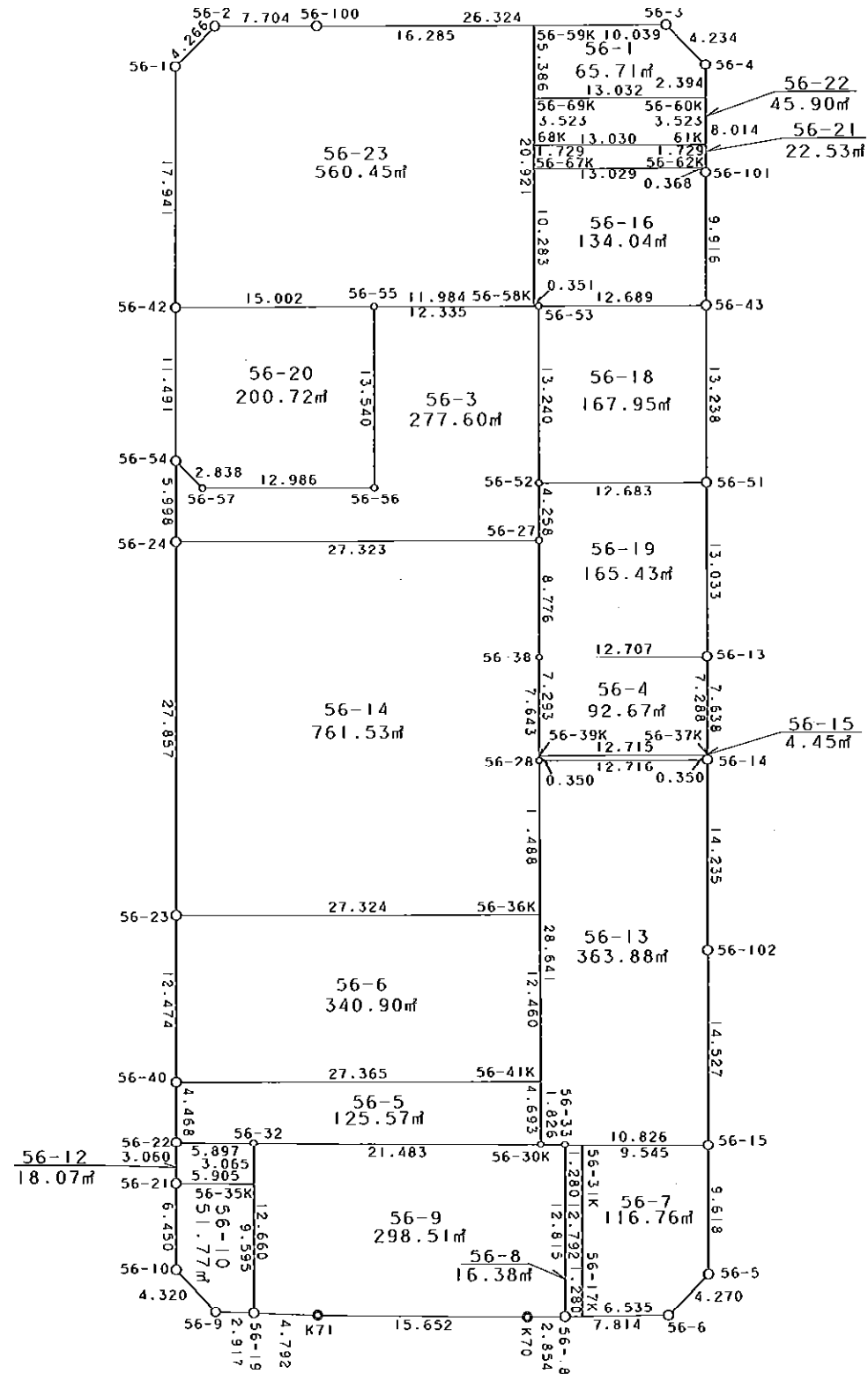


56街区



S = 1 / 500



凡 例

記号	名称
⊙	地区界点
○	街区点
○	画地点 (折れ点)
┌	画地点 (直線中)

面積 (座標法) 計算書

地番 = 56街区

測点名	[1] X (i)	[2] X (i+1)-X (i-1)	[3] Y (i)	[4] Y (i+1)-Y (i-1)	[2] * [3]	[1] * [4]	方向角	夾角	距離
56-2	-149982.645	-3.220	-41112.887	-10.652	132383.496140	1597615.134540	223-44-12	134-45-47	4.266
56-1	-149985.727	-21.019	-41115.836	-2.580	864213.756884	386963.175660	178-49-17	135-05-05	17.941
56-42	-150003.664	-29.426	-41115.467	0.608	1209863.731942	-91202.227712	178-48-30	179-59-13	11.491
56-54	-150015.153	-17.486	-41115.228	0.355	718940.876808	-53255.379315	178-53-31	180-05-01	5.998
56-24	-150021.150	-33.849	-41115.112	0.664	1391705.426088	-99614.043600	178-52-22	179-58-51	27.857
56-23	-150049.002	-40.324	-41114.564	0.778	1657903.678736	-116738.123556	178-56-37	180-04-15	12.474
56-40	-150061.474	-16.939	-41114.334	0.313	696435.703626	-46969.241362	178-56-08	179-59-31	4.468
56-22	-150065.941	-7.527	-41114.251	0.137	309466.967277	-20559.033917	178-59-20	180-03-12	3.060
56-21	-150069.001	-9.509	-41114.197	0.178	390954.899273	-26712.282178	178-53-54	179-54-34	6.450
56-10	-150075.450	-9.500	-41114.073	3.183	390583.693500	-477690.157350	134-55-30	136-01-36	4.320
56-9	-150078.501	-3.101	-41111.014	5.976	127485.254414	-896869.121976	90-58-55	136-03-25	2.917
56-19	-150078.551	-0.141	-41108.097	7.708	5796.241677	-1156805.471108	91-05-17	180-06-22	4.792
K71	-150078.642	0.028	-41103.306	20.443	-1150.892568	-3068057.678406	89-33-52	178-28-35	15.652
K70	-150078.523	0.191	-41087.654	18.505	-7847.741914	-2777203.068115	88-33-16	178-59-24	2.854
56-18	-150078.451	0.294	-41084.801	10.664	-12078.931494	-1600436.601464	88-22-19	179-49-03	7.814
56-6	-150078.229	3.305	-41076.990	10.766	-135759.451950	-1615742.213414	43-47-08	135-24-49	4.270
56-5	-150075.146	12.699	-41074.035	2.769	-521599.170465	-415558.079274	358-53-31	135-06-23	9.618
56-15	-150065.530	24.140	-41074.221	-0.479	-991531.694940	71881.388870	358-50-39	179-57-08	14.527
56-102	-150051.006	28.757	-41074.514	-0.558	-1181179.799098	83728.461348	358-56-00	180-05-21	14.235
56-14	-150036.773	21.870	-41074.779	-0.415	-898305.416730	62265.260795	358-52-29	179-56-29	7.638
56-13	-150029.136	20.667	-41074.929	-0.418	-848895.557643	62712.178848	358-49-18	179-56-49	13.033
56-51	-150016.106	26.266	-41075.197	-0.520	-1078881.124402	78008.375120	358-54-33	180-05-15	13.238
56-43	-150002.870	23.150	-41075.449	-0.460	-950896.644350	69001.320200	358-47-53	179-53-20	9.916
56-101	-149992.956	17.927	-41075.657	-0.362	-736363.303039	54297.450072	358-53-56	180-06-03	8.014
56-4	-149984.943	10.946	-41075.811	-3.208	-449615.827206	481151.697144	313-50-32	134-56-36	4.234
56-3	-149982.010	2.436	-41078.865	-29.373	-100068.115140	4405421.579730	268-55-05	135-04-33	26.324
56-100	-149982.507	-0.635	-41105.184	-34.022	26101.791840	5102704.853154	268-58-25	180-03-20	7.704
合計				倍面積 面積	7661.847266 3830.92	-7661.847266 3830.92			265.105

地番	筆種別	面積	坪数
56-1	筆界	65.71	19.87
56-3	筆界	277.60	83.97
56-4	筆界	92.67	28.03
56-5	筆界	125.57	37.98
56-6	筆界	340.90	103.12
56-7	筆界	116.76	35.32
56-8	筆界	16.38	4.95
56-9	筆界	298.51	90.30
56-10	筆界	51.77	15.66
56-12	筆界	18.07	5.46
56-13	筆界	363.88	110.07
56-14	筆界	761.53	230.36
56-15	筆界	4.45	1.34
56-16	筆界	134.04	40.54
56-18	筆界	167.95	50.80
56-19	筆界	165.43	50.04
56-20	筆界	200.72	60.71
56-21	筆界	22.53	6.81
56-22	筆界	45.90	13.88
56-23	筆合	560.45	169.53
	計	3830.82	1158.74

面積 (座標法) 計算書

地番 = 56-1
測点名

	[1] X (i)	[2] X (i+1)-X (i-1)	[3] Y (i)	[4] Y (i+1)-Y (i-1)	[2]*[3]	[1]*[4]	方向角	夾角	距離
56-60K	-149987.337	2.642	-41075.765	12.984	-108522.171130	-1947435.583608	358-53-57	89-59-22	2.394
56-4	-149984.943	5.327	-41075.811	-3.100	-218810.845197	464953.323300	313-50-32	134-56-35	4.234
56-3	-149982.010	2.743	-41078.865	-13.091	-112679.326695	1963414.492910	268-54-56	135-04-24	10.039
56-59K	-149982.200	-5.575	-41088.902	-9.930	229070.628650	1489323.246000	178-51-42	89-56-46	5.386
56-69K	-149987.585	-5.137	-41088.795	13.137	211073.139915	-1970386.904145	88-54-35	90-02-53	13.032
合計				倍面積 面積	131.425543 65.71	-131.425543 65.71			35.085

面積 (座標法) 計算書

地番 = 56-3
測点名

	[1] X (i)	[2] X (i+1)-X (i-1)	[3] Y (i)	[4] Y (i+1)-Y (i-1)	[2]*[3]	[1]*[4]	方向角	夾角	距離
56-55	-150003.339	-13.765	-41100.469	-12.072	565747.955785	1810840.308408	178-53-44	89-57-17	13.540
56-56	-150016.876	-13.791	-41100.208	-12.723	566812.968528	1908664.713348	268-52-45	269-59-01	12.986
56-57	-150017.130	1.723	-41113.192	-15.020	-70838.029816	2253257.292600	314-09-28	225-16-43	2.838
56-54	-150015.153	-4.020	-41115.228	-1.920	165283.216560	288029.093760	178-53-31	44-44-03	5.998
56-24	-150021.150	-5.452	-41115.112	27.434	224159.590624	-4115680.229100	88-51-26	89-57-55	27.323
56-27	-150020.605	4.802	-41087.794	27.234	-197303.586788	-4085661.156570	358-52-10	90-00-44	4.258
56-52	-150016.348	17.494	-41087.878	-0.342	-718791.337732	51305.591016	358-53-00	180-00-50	13.240
56-53	-150003.111	13.009	-41088.136	-12.591	-534515.561224	1888689.170601	268-56-27	90-03-27	12.335
合計				倍面積 面積	555.215937 277.60	-555.215937 277.60			92.518

面積 (座標法) 計算書

地番 = 56-4
測点名

	[1] X (i)	[2] X (i+1)-X (i-1)	[3] Y (i)	[4] Y (i+1)-Y (i-1)	[2]*[3]	[1]*[4]	方向角	夾角	距離
56-37K	-150036.423	7.536	-41074.786	12.570	-309539.587296	-1885957.837110	358-52-33	89-59-52	7.288
56-13	-150029.136	7.043	-41074.929	-12.848	-289290.724947	1927574.339328	268-53-59	90-01-26	12.707
56-38	-150029.380	-7.536	-41087.634	-12.570	309636.409824	1885869.306600	178-56-22	90-02-23	7.293
56-39K	-150036.672	-7.043	-41087.499	12.848	289379.255457	-1927671.161856	88-52-41	89-56-19	12.715
合計				倍面積 面積	185.353038 92.67	-185.353038 92.67			40.003

面積 (座標法) 計算書

地番 = 56-5
測点名

	[1] X (i)	[2] X (i+1)-X (i-1)	[3] Y (i)	[4] Y (i+1)-Y (i-1)	[2]*[3]	[1]*[4]	方向角	夾角	距離
56-40	-150061.474	-4.977	-41114.334	-27.277	204626.040318	4093226.826298	178-56-08	90-00-12	4.468
56-22	-150065.941	-4.420	-41114.251	5.980	181724.989420	-897394.327180	89-32-36	90-36-28	5.897
56-32	-150065.894	0.285	-41108.354	27.379	-11715.880890	-4108654.111826	89-21-55	179-49-19	21.483
56-30K	-150065.656	4.930	-41086.872	21.380	-202558.278960	-3208403.725280	358-45-17	89-23-22	4.693
56-41K	-150060.964	4.182	-41086.974	-27.462	-171825.725268	4120974.193368	268-55-56	90-10-39	27.365
合計				倍面積 面積	251.144620 125.57	-251.144620 125.57			63.906

面積 (座標法) 計算書

地番 = 56-6
測点名

	[1] X (i)	[2] X (i+1)-X (i-1)	[3] Y (i)	[4] Y (i+1)-Y (i-1)	[2] * [3]	[1] * [4]	方向角	夾角	距離
56-40	-150061.474	-11.962	-41114.334	27.590	491809.663308	-4140196.067660	88-55-56	89-59-19	27.365
56-41K	-150060.964	12.967	-41086.974	27.090	-532774.791858	-4065151.514760	358-45-30	89-49-34	12.460
56-36K	-150048.507	11.962	-41087.244	-27.590	-491485.612728	4139838.308130	268-57-43	90-12-13	27.324
56-23	-150049.002	-12.967	-41114.564	-27.090	533132.551388	4064827.464180	178-56-37	89-58-54	12.474
合計				倍面積 面積	681.810110 340.90	-681.810110 340.90			79.623

面積 (座標法) 計算書

地番 = 56-7
測点名

	[1] X (i)	[2] X (i+1)-X (i-1)	[3] Y (i)	[4] Y (i+1)-Y (i-1)	[2] * [3]	[1] * [4]	方向角	夾角	距離
56-17K	-150078.415	-12.604	-41083.522	6.776	517816.711288	-1016931.340040	88-22-08	89-27-43	6.535
56-6	-150078.229	3.269	-41076.990	9.487	-134280.680310	-1423792.158523	43-47-08	135-25-00	4.270
56-5	-150075.146	12.699	-41074.035	2.769	-521599.170465	-415558.079274	358-53-31	135-06-23	9.618
56-15	-150065.530	9.521	-41074.221	-9.731	-391067.658141	1460287.672430	269-25-47	90-32-16	9.545
56-31K	-150065.625	-12.885	-41083.766	-9.301	529364.324910	1395760.378125	178-54-25	89-28-38	12.792
合計				倍面積 面積	233.527282 116.76	-233.527282 116.76			42.760

面積 (座標法) 計算書

地番 = 56-8
測点名

	[1] X (i)	[2] X (i+1)-X (i-1)	[3] Y (i)	[4] Y (i+1)-Y (i-1)	[2] * [3]	[1] * [4]	方向角	夾角	距離
56-31K	-150065.625	12.777	-41083.766	-1.524	-524927.278182	228700.012500	269-25-05	90-30-40	1.280
56-33	-150065.638	-12.826	-41085.046	-1.035	526956.799996	155317.935330	178-54-16	89-29-11	12.815
56-18	-150078.451	-12.777	-41084.801	1.524	524940.502377	-228719.559324	88-23-16	89-29-00	1.280
56-17K	-150078.415	12.826	-41083.522	1.035	-526937.253172	-155331.159525	358-54-25	90-31-09	12.792
合計				倍面積 面積	32.771019 16.38	-32.771019 16.38			28.167

面積 (座標法) 計算書

地番 = 56-9
測点名

	[1] X (i)	[2] X (i+1)-X (i-1)	[3] Y (i)	[4] Y (i+1)-Y (i-1)	[2] * [3]	[1] * [4]	方向角	夾角	距離
56-32	-150065.894	-12.895	-41108.354	-21.225	530092.224830	3185148.600150	178-50-12	89-28-17	12.660
56-19	-150078.551	-12.748	-41108.097	5.048	524046.020556	-757596.525448	91-05-17	92-15-05	4.792
K71	-150078.642	0.028	-41103.306	20.443	-1150.892568	-3068057.678406	89-33-52	178-28-35	15.652
K70	-150078.523	0.191	-41087.654	18.505	-7847.741914	-2777203.068115	88-33-16	178-59-24	2.854
56-18	-150078.451	12.885	-41084.801	2.608	-529377.660885	-391404.600208	358-54-16	90-21-00	12.815
56-33	-150065.638	12.795	-41085.046	-2.071	-525683.163570	310785.936298	269-26-07	90-31-51	1.826
56-30K	-150065.656	-0.256	-41086.872	-23.308	10518.239232	3497730.310048	269-21-55	179-55-48	21.483
合計				倍面積 面積	597.025681 298.51	-597.025681 298.51			72.082

面積 (座標法) 計算書

地番 = 56-10
測点名

	[1] X (i)	[2] X (i+1)-X (i-1)	[3] Y (i)	[4] Y (i+1)-Y (i-1)	[2]*[3]	[1]*[4]	方向角	夾角	距離
56-21	-150069.001	-6.492	-41114.197	-5.781	266913.366924	867548.894781	178-53-54	89-18-56	6.450
56-10	-150075.450	-9.500	-41114.073	3.183	390583.693500	-477690.157350	134-55-30	136-01-36	4.320
56-9	-150078.501	-3.101	-41111.014	5.976	127485.254414	-896869.121976	90-58-55	136-03-25	2.917
56-19	-150078.551	9.543	-41108.097	2.722	-392294.569671	-408513.815822	358-50-08	87-51-13	9.595
56-35K	-150068.958	9.550	-41108.292	-6.100	-392584.188600	915420.643800	269-34-58	90-44-50	5.905
合計				倍面積 面積	103.556567 51.77	-103.556567 51.77			29.187

面積 (座標法) 計算書

地番 = 56-12
測点名

	[1] X (i)	[2] X (i+1)-X (i-1)	[3] Y (i)	[4] Y (i+1)-Y (i-1)	[2]*[3]	[1]*[4]	方向角	夾角	距離
56-21	-150069.001	-3.017	-41114.197	5.959	124041.532349	-894261.176959	89-34-58	90-35-38	5.905
56-35K	-150068.958	3.107	-41108.292	5.843	-127723.463244	-876852.921594	358-50-27	89-15-29	3.065
56-32	-150065.894	3.017	-41108.354	-5.959	-124023.904018	894242.662346	269-32-36	90-42-09	5.897
56-22	-150065.941	-3.107	-41114.251	-5.843	127741.977857	876835.293263	178-59-20	89-26-44	3.060
合計				倍面積 面積	36.142944 18.07	-36.142944 18.07			17.927

面積 (座標法) 計算書

地番 = 56-13
測点名

	[1] X (i)	[2] X (i+1)-X (i-1)	[3] Y (i)	[4] Y (i+1)-Y (i-1)	[2]*[3]	[1]*[4]	方向角	夾角	距離
56-28	-150037.022	-28.883	-41087.493	-12.093	1186730.060319	1814397.707046	178-45-27	89-52-46	28.641
56-30K	-150065.656	-28.616	-41086.872	2.447	1175741.929152	-367210.660232	89-26-07	90-40-40	1.826
56-33	-150065.638	0.126	-41085.046	12.651	-5176.715796	-1898480.386338	89-25-42	179-59-35	10.826
56-15	-150065.530	14.632	-41074.221	10.532	-600998.001672	-1580490.161960	358-50-39	89-24-57	14.527
56-102	-150051.006	28.757	-41074.514	-0.558	-1181179.799098	83728.461348	358-56-00	180-05-21	14.235
56-14	-150036.773	13.984	-41074.779	-12.979	-574389.709536	1947327.276767	268-52-41	89-56-41	12.716
合計				倍面積 面積	727.763369 363.88	-727.763369 363.88			82.771

面積 (座標法) 計算書

地番 = 56-14
測点名

	[1] X (i)	[2] X (i+1)-X (i-1)	[3] Y (i)	[4] Y (i+1)-Y (i-1)	[2]*[3]	[1]*[4]	方向角	夾角	距離
56-23	-150049.002	-27.357	-41114.564	27.868	1124771.127348	-4181565.587736	88-57-43	90-05-21	27.324
56-36K	-150048.507	11.980	-41087.244	27.071	-492225.183120	-4061963.132997	358-45-29	89-47-46	11.488
56-28	-150037.022	19.127	-41087.493	-0.390	-785880.478611	58514.438580	358-56-35	180-11-06	7.643
56-38	-150029.380	16.417	-41087.634	-0.301	-674535.687378	45158.843380	358-57-19	180-00-44	8.776
56-27	-150020.605	8.230	-41087.794	-27.478	-338152.544620	4122266.184190	268-51-26	89-54-07	27.323
56-24	-150021.150	-28.397	-41115.112	-26.770	1167545.835464	4016066.185500	178-52-22	90-00-56	27.857
合計				倍面積 面積	1523.069083 761.53	-1523.069083 761.53			110.411

面積 (座標法) 計算書

地番 = 56-15

測点名	[1] X (i)	[2] X (i+1)-X (i-1)	[3] Y (i)	[4] Y (i+1)-Y (i-1)	[2] * [3]	[1] * [4]	方向角	夾角	距離
56-39K	-150036.672	-0.599	-41087.499	-12.707	24611.411901	1906515.991104	179-01-04	90-08-23	0.350
56-28	-150037.022	-0.101	-41087.493	12.720	4149.836793	-1908470.919840	88-52-41	89-51-37	12.716
56-14	-150036.773	0.599	-41074.779	12.707	-24603.792621	-1906517.274511	358-51-15	89-58-34	0.350
56-37K	-150036.423	0.101	-41074.786	-12.720	-4148.553386	1908463.300560	268-52-41	90-01-26	12.715
合計				倍面積 面積	8.902687 4.45	-8.902687 4.45			26.131

面積 (座標法) 計算書

地番 = 56-16

測点名	[1] X (i)	[2] X (i+1)-X (i-1)	[3] Y (i)	[4] Y (i+1)-Y (i-1)	[2] * [3]	[1] * [4]	方向角	夾角	距離
56-67K	-149992.836	-10.529	-41088.691	-12.823	432622.827539	1923358.136028	178-51-48	89-57-14	10.283
56-58K	-150003.117	-10.275	-41088.487	0.555	422184.203925	-83251.729935	89-01-14	90-09-26	0.351
56-53	-150003.111	0.247	-41088.136	13.038	-10148.769592	-1955740.561218	88-54-42	179-53-28	12.689
56-43	-150002.870	10.155	-41075.449	12.479	-417121.184595	-1871885.814730	358-47-53	89-53-11	9.916
56-101	-149992.956	10.282	-41075.657	-0.215	-422339.905274	32248.485540	358-54-37	180-06-44	0.368
56-62K	-149992.588	0.120	-41075.664	-13.034	-4929.079680	1955003.391992	268-54-34	89-59-57	13.029
合計				倍面積 面積	268.092323 134.04	-268.092323 134.04			46.636

面積 (座標法) 計算書

地番 = 56-18

測点名	[1] X (i)	[2] X (i+1)-X (i-1)	[3] Y (i)	[4] Y (i+1)-Y (i-1)	[2] * [3]	[1] * [4]	方向角	夾角	距離
56-53	-150003.111	-13.478	-41088.136	-12.429	553785.897008	1864388.666619	178-53-00	89-58-18	13.240
56-52	-150016.348	-12.995	-41087.878	12.939	533936.974610	-1941061.526772	88-54-24	90-01-24	12.683
56-51	-150016.106	13.478	-41075.197	12.429	-553611.505166	-1864550.181474	358-54-33	90-00-09	13.238
56-43	-150002.870	12.995	-41075.449	-12.939	-533775.459755	1940887.134930	268-54-42	90-00-09	12.689
合計				倍面積 面積	335.906697 167.95	-335.906697 167.95			51.850

面積 (座標法) 計算書

地番 = 56-19

測点名	[1] X (i)	[2] X (i+1)-X (i-1)	[3] Y (i)	[4] Y (i+1)-Y (i-1)	[2] * [3]	[1] * [4]	方向角	夾角	距離
56-52	-150016.348	-4.499	-41087.878	-12.597	184854.363122	1889755.935756	178-52-10	89-57-46	4.258
56-27	-150020.605	-13.032	-41087.794	0.244	535456.131408	-36605.027620	178-57-19	180-05-09	8.776
56-38	-150029.380	-8.531	-41087.634	12.865	350518.605654	-1930127.973700	88-53-59	89-56-40	12.707
56-13	-150029.136	13.274	-41074.929	12.437	-545228.607546	-1865912.364432	358-49-18	89-55-19	13.033
56-51	-150016.106	12.788	-41075.197	-12.949	-525269.619236	1942558.556594	268-54-24	90-05-06	12.683
合計				倍面積 面積	330.873402 165.43	-330.873402 165.43			51.457

面積 (座標法) 計算書

地番 = 56-20
測点名

	[1] X (i)	[2] X (i+1)-X (i-1)	[3] Y (i)	[4] Y (i+1)-Y (i-1)	[2] * [3]	[1] * [4]	方向角	夾角	距離
56-42	-150003.664	-11.814	-41115.467	-14.759	485738.127138	2213904.076976	178-48-30	90-02-59	11.491
56-54	-150015.153	-13.466	-41115.228	2.275	553657.660248	-341284.473075	134-09-28	135-20-58	2.838
56-57	-150017.130	-1.723	-41113.192	15.020	70838.029816	-2253257.292600	88-52-45	134-43-17	12.986
56-56	-150016.876	13.791	-41100.208	12.723	-566812.968528	-1908664.713348	358-53-44	90-00-59	13.540
56-55	-150003.339	13.212	-41100.469	-15.259	-543019.396428	2288900.949801	268-45-31	89-51-47	15.002
合計				倍面積 面積	401.452246 200.72	-401.452246 200.72			55.857

面積 (座標法) 計算書

地番 = 56-21
測点名

	[1] X (i)	[2] X (i+1)-X (i-1)	[3] Y (i)	[4] Y (i+1)-Y (i-1)	[2] * [3]	[1] * [4]	方向角	夾角	距離
56-68K	-149991.107	-1.977	-41088.725	-12.994	81232.409325	1948984.444358	178-52-24	89-57-50	1.729
56-67K	-149992.836	-1.481	-41088.691	13.061	60852.351371	-1959056.430996	88-54-34	90-02-10	13.029
56-62K	-149992.588	1.977	-41075.664	12.994	-81206.587728	-1949003.688472	358-54-24	89-59-50	1.729
56-61K	-149990.859	1.481	-41075.697	-13.061	-60833.107257	1959030.609399	268-54-34	90-00-10	13.030
合計				倍面積 面積	45.065711 22.53	-45.065711 22.53			29.517

面積 (座標法) 計算書

地番 = 56-22
測点名

	[1] X (i)	[2] X (i+1)-X (i-1)	[3] Y (i)	[4] Y (i+1)-Y (i-1)	[2] * [3]	[1] * [4]	方向角	夾角	距離
56-69K	-149987.585	-3.770	-41088.795	-12.960	154904.757150	1943839.101600	178-51-41	89-57-06	3.523
56-68K	-149991.107	-3.274	-41088.725	13.098	134524.485650	-1964583.519486	88-54-34	90-02-53	13.030
56-61K	-149990.859	3.770	-41075.697	12.960	-154855.377690	-1943881.532640	358-53-38	89-59-04	3.523
56-60K	-149987.337	3.274	-41075.765	-13.098	-134482.054610	1964534.140026	268-54-35	90-00-57	13.032
合計				倍面積 面積	91.810500 45.90	-91.810500 45.90			33.108

面積 (座標法) 計算書

地番 = 56-23
測点名

	[1] X (i)	[2] X (i+1)-X (i-1)	[3] Y (i)	[4] Y (i+1)-Y (i-1)	[2] * [3]	[1] * [4]	方向角	夾角	距離
56-2	-149982.645	-3.220	-41112.887	-10.652	132383.496140	1597615.134540	223-44-12	134-45-47	4.266
56-1	-149985.727	-21.019	-41115.836	-2.580	864213.756884	386963.175660	178-49-17	135-05-05	17.941
56-42	-150003.664	-17.612	-41115.467	15.367	724125.604804	-2305106.304688	88-45-31	89-56-14	15.002
56-55	-150003.339	0.547	-41100.469	26.980	-22481.956543	-4047090.086220	88-56-19	180-10-48	11.984
56-58K	-150003.117	21.139	-41088.487	11.567	-868569.526693	-1735086.054339	358-51-48	89-55-29	20.921
56-59K	-149982.200	20.610	-41088.902	-16.697	-846842.270220	2504252.793400	268-55-11	90-03-23	16.285
56-100	-149982.507	-0.445	-41105.184	-23.985	18291.806880	3597330.430395	268-58-25	180-03-14	7.704
合計				倍面積 面積	1120.911252 560.45	-1120.911252 560.45			94.103