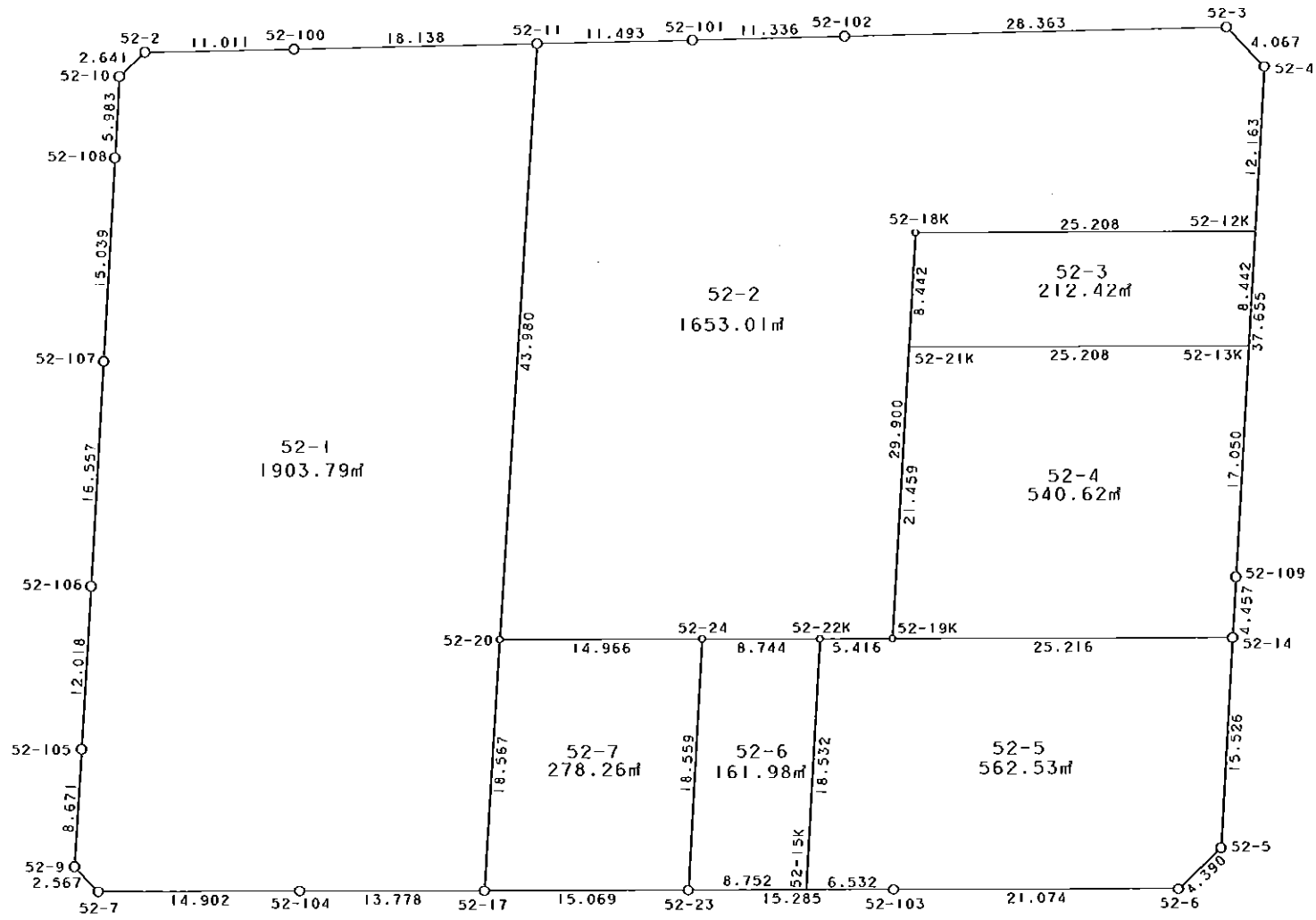


西部第4地区土地区画整理事業 出来形確認測量 (原子図)

52街区



S = 1 / 500



凡 例

記号	名称
⊙	地区界点
○	街区点
○	画地点 (折れ点)
┆	画地点 (直線中)

面積 (座標法) 計算書

地番 = 52街区

測点名	[1] X (i)	[2] X (i+1)-X (i-1)	[3] Y (i)	[4] Y (i+1)-Y (i-1)	[2] * [3]	[1] * [4]	方向角	夾 角	距 離
52-2	-149829.122	-3.018	-41161.944	-12.715	124226.746992	1905077.286230	221-36-30	137-02-38	2.641
52-10	-149831.097	-7.957	-41163.698	-1.624	327539.544986	243325.701528	178-45-18	137-08-48	5.983
52-108	-149837.079	-21.018	-41163.568	0.444	865175.872224	-66527.663076	178-48-13	180-02-55	15.039
52-107	-149852.115	-31.590	-41163.254	0.639	1300347.193860	-95755.501485	178-52-31	180-04-18	16.557
52-106	-149868.669	-28.570	-41162.929	0.556	1176024.881530	-83326.979964	178-53-55	180-01-24	12.018
52-105	-149880.685	-20.686	-41162.698	0.382	851491.570828	-57254.421670	179-00-08	180-06-13	8.671
52-9	-149889.355	-10.395	-41162.547	2.052	427884.676065	-307572.956460	132-13-16	133-13-08	2.567
52-7	-149891.080	-0.550	-41160.646	16.757	22638.355300	-2511724.827560	85-28-40	133-15-24	14.902
52-104	-149889.905	2.225	-41145.790	28.594	-91549.382750	-4285951.943570	85-37-46	180-09-06	13.778
52-17	-149888.855	2.211	-41132.052	28.762	-90942.966972	-4311103.247510	85-34-52	179-57-06	15.069
52-23	-149887.694	2.340	-41117.028	30.263	-96213.845520	-4536051.283522	85-34-34	179-59-42	15.285
52-103	-149886.515	2.771	-41101.789	36.253	-113893.057319	-5433835.828295	85-40-03	180-05-29	21.074
52-6	-149884.923	4.848	-41080.775	23.958	-199159.597200	-3590942.985234	42-07-09	136-27-06	4.390
52-5	-149881.667	18.779	-41077.831	2.638	-771400.588349	-395387.837546	358-52-14	136-45-05	15.526
52-14	-149866.144	19.979	-41078.137	-0.402	-820700.099123	60246.189888	358-45-57	179-53-43	4.457
52-109	-149861.688	42.104	-41078.233	-0.813	-1729557.922232	121837.552344	358-54-32	180-08-35	37.655
52-4	-149824.040	40.359	-41078.950	-3.749	-1657905.343050	561690.325960	311-48-03	132-53-31	4.067
52-3	-149821.329	-0.055	-41081.982	-31.260	2259.509010	4683414.744540	264-24-13	132-36-10	28.363
52-102	-149824.095	-3.878	-41110.210	-39.509	159425.394380	5919400.169355	264-22-13	179-58-00	11.336
52-101	-149825.207	-2.219	-41121.491	-22.721	91248.588529	3404178.528247	264-28-23	180-06-10	11.493
52-11	-149826.314	-2.872	-41132.931	-29.492	118133.777832	4418677.652488	264-24-57	179-56-34	18.138
52-100	-149828.079	-2.808	-41150.983	-29.013	115551.960264	4346962.056027	264-33-52	180-08-55	11.011
合計				倍面積 面積	10625.269285 5312.63	-10625.269285 5312.63			290.020

地番	筆種別	面積	坪数
52-1	筆界	1903.79	575.89
52-2	筆界	1653.01	500.03
52-3	筆界	212.42	64.25
52-4	筆界	540.62	163.53
52-5	筆界	562.53	170.16
52-6	筆界	161.98	49.00
52-7	筆界	278.26	84.17
	筆合計	5312.61	1607.03

面積 (座標法) 計算書

地番 = 52-1
測点名

	[1] X (i)	[2] X (i+1)-X (i-1)	[3] Y (i)	[4] Y (i+1)-Y (i-1)	[2] * [3]	[1] * [4]	方向角	夾角	距離
52-2	-149829.122	-3.018	-41161.944	-12.715	124226.746992	1905077.286230	221-36-30	137-02-38	2.641
52-10	-149831.097	-7.957	-41163.698	-1.624	327539.544986	243325.701528	178-45-18	137-08-48	5.983
52-108	-149837.079	-21.018	-41163.568	0.444	865175.872224	-66527.663076	178-48-13	180-02-55	15.039
52-107	-149852.115	-31.590	-41163.254	0.639	1300347.193860	-95755.501485	178-52-31	180-04-18	16.557
52-106	-149868.669	-28.570	-41162.929	0.556	1176024.881530	-83326.979964	178-53-55	180-01-24	12.018
52-105	-149880.685	-20.686	-41162.698	0.382	851491.570828	-57254.421670	179-00-08	180-06-13	8.671
52-9	-149889.355	-10.395	-41162.547	2.052	427884.676065	-307572.956460	132-13-16	133-13-08	2.567
52-7	-149891.080	-0.550	-41160.646	16.757	22638.355300	-2511724.827560	85-28-40	133-15-24	14.902
52-104	-149889.905	2.225	-41145.790	28.594	-91549.382750	-4285951.943570	85-37-46	180-09-06	13.778
52-17	-149888.855	19.615	-41132.052	13.469	-806805.199980	-2018852.987995	359-10-12	93-32-26	18.567
52-20	-149870.290	62.541	-41132.321	-0.879	-2572456.487661	131735.984910	359-12-19	180-02-07	43.980
52-11	-149826.314	42.211	-41132.931	-18.662	-1736262.150441	2796058.671868	264-24-57	85-12-38	18.138
52-100	-149828.079	-2.808	-41150.983	-29.013	115551.960264	4346962.056027	264-33-52	180-08-55	11.011
合計				倍面積 面積	3807.581217 1903.79	-3807.581217 1903.79			183.852

面積 (座標法) 計算書

地番 = 52-2
測点名

	[1] X (i)	[2] X (i+1)-X (i-1)	[3] Y (i)	[4] Y (i+1)-Y (i-1)	[2] * [3]	[1] * [4]	方向角	夾角	距離
52-11	-149826.314	-45.083	-41132.931	-10.830	1854395.928273	1622618.980620	179-12-19	94-43-56	43.980
52-20	-149870.290	-42.825	-41132.321	15.532	1761491.646825	-2327785.344280	85-35-21	86-23-02	14.966
52-24	-149869.139	1.799	-41117.399	23.642	-73970.200801	-3543206.184238	85-45-00	180-09-39	8.744
52-22K	-149868.491	1.077	-41108.679	14.119	-44274.047283	-2115993.224429	85-27-25	179-42-25	5.416
52-19K	-149868.062	30.324	-41103.280	4.830	-1246415.862720	-723862.739460	358-54-35	93-27-10	29.900
52-18K	-149838.167	31.861	-41103.849	24.562	-1309609.732989	-3680325.057854	85-31-37	266-37-02	25.208
52-12K	-149836.201	14.127	-41078.718	24.899	-580319.049186	-3730771.568699	358-54-25	93-22-48	12.163
52-4	-149824.040	14.872	-41078.950	-3.264	-610926.144400	489025.666560	311-48-03	132-53-38	4.067
52-3	-149821.329	-0.055	-41081.982	-31.260	2259.509010	4683414.744540	264-24-13	132-36-10	28.363
52-102	-149824.095	-3.878	-41110.210	-39.509	159425.394380	5919400.169355	264-22-13	179-58-00	11.336
52-101	-149825.207	-2.219	-41121.491	-22.721	91248.588529	3404178.528247	264-28-23	180-06-10	11.493
合計				倍面積 面積	3306.029638 1653.01	-3306.029638 1653.01			195.636

面積 (座標法) 計算書

地番 = 52-3
測点名

	[1] X (i)	[2] X (i+1)-X (i-1)	[3] Y (i)	[4] Y (i+1)-Y (i-1)	[2] * [3]	[1] * [4]	方向角	夾角	距離
52-13K	-149844.641	10.406	-41078.557	24.970	-427463.464142	-3741620.685770	358-54-26	93-22-49	8.442
52-12K	-149836.201	6.474	-41078.718	-25.292	-265943.620332	3789657.195692	265-31-37	86-37-11	25.208
52-18K	-149838.167	-10.406	-41103.849	-24.970	427726.652694	3741459.029990	178-54-26	93-22-49	8.442
52-21K	-149846.607	-6.474	-41103.688	25.292	266105.276112	-3789920.384244	85-31-37	86-37-11	25.208
合計				倍面積 面積	424.844332 212.42	-424.844332 212.42			67.300

面積 (座標法) 計算書

地番 = 52-4
測点名

	[1] X (i)	[2] X (i+1)-X (i-1)	[3] Y (i)	[4] Y (i+1)-Y (i-1)	[2] * [3]	[1] * [4]	方向角	夾角	距離
52-21K	-149846.607	-23.421	-41103.688	-24.723	962689.476648	3704657.664861	178-54-38	93-23-01	21.459
52-19K	-149868.062	-19.537	-41103.280	25.551	803034.781360	-3829278.852162	85-38-16	86-43-38	25.216
52-14	-149866.144	6.374	-41078.137	25.047	-261832.045238	-3753697.308768	358-45-57	93-07-41	4.457
52-109	-149861.688	21.503	-41078.233	-0.420	-883305.244199	62941.908960	358-54-40	180-08-43	17.050
52-13K	-149844.641	15.081	-41078.557	-25.455	-619505.718117	3814295.336655	265-31-37	86-36-57	25.208
合計				倍面積 面積	1081.250454 540.62	-1081.250454 540.62			93.390

面積 (座標法) 計算書

地番 = 52-5
測点名

	[1] X (i)	[2] X (i+1)-X (i-1)	[3] Y (i)	[4] Y (i+1)-Y (i-1)	[2] * [3]	[1] * [4]	方向角	夾角	距離
52-22K	-149868.491	-18.957	-41108.679	-5.022	779297.227803	752639.561802	178-50-04	93-22-39	18.532
52-15K	-149887.019	-18.024	-41108.302	6.890	740936.035248	-1032721.560910	85-34-30	86-44-26	6.532
52-103	-149886.515	2.096	-41101.789	27.527	-86149.349744	-4125926.098405	85-40-03	180-05-33	21.074
52-6	-149884.923	4.848	-41080.775	23.958	-199159.597200	-3590942.985234	42-07-09	136-27-06	4.390
52-5	-149881.667	18.779	-41077.831	2.638	-771400.588349	-395387.837546	358-52-14	136-45-05	15.526
52-14	-149866.144	13.605	-41078.137	-25.449	-558868.053885	3813943.498656	265-38-16	86-46-02	25.216
52-19K	-149868.062	-2.347	-41103.280	-30.542	96469.398160	4577270.349604	265-27-25	179-49-09	5.416
合計				倍面積 面積	1125.072033 562.53	-1125.072033 562.53			96.686

面積 (座標法) 計算書

地番 = 52-6
測点名

	[1] X (i)	[2] X (i+1)-X (i-1)	[3] Y (i)	[4] Y (i+1)-Y (i-1)	[2] * [3]	[1] * [4]	方向角	夾角	距離
52-22K	-149868.491	17.880	-41108.679	-9.097	-735023.180520	1363353.662627	265-45-00	86-54-56	8.744
52-24	-149869.139	-19.203	-41117.399	-8.349	789577.412997	1251257.441511	178-51-16	93-06-16	18.559
52-23	-149887.694	-17.880	-41117.028	9.097	735172.460640	-1363528.352318	85-34-36	86-43-20	8.752
52-15K	-149887.019	19.203	-41108.302	8.349	-789402.723306	-1251406.721631	358-50-04	93-15-28	18.532
合計				倍面積 面積	323.969811 161.98	-323.969811 161.98			54.587

面積 (座標法) 計算書

地番 = 52-7
測点名

	[1] X (i)	[2] X (i+1)-X (i-1)	[3] Y (i)	[4] Y (i+1)-Y (i-1)	[2] * [3]	[1] * [4]	方向角	夾角	距離
52-20	-149870.290	-19.716	-41132.321	-14.653	810964.840836	2196049.359370	179-10-12	93-34-51	18.567
52-17	-149888.855	-17.404	-41132.052	15.293	715862.233008	-2292250.259515	85-34-52	86-24-40	15.069
52-23	-149887.694	19.716	-41117.028	14.653	-810663.324048	-2196304.380182	358-51-16	93-16-24	18.559
52-24	-149869.139	17.404	-41117.399	-15.293	-715607.212196	2291948.742727	265-35-21	86-44-05	14.966
合計				倍面積 面積	556.537600 278.26	-556.537600 278.26			67.161