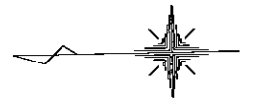
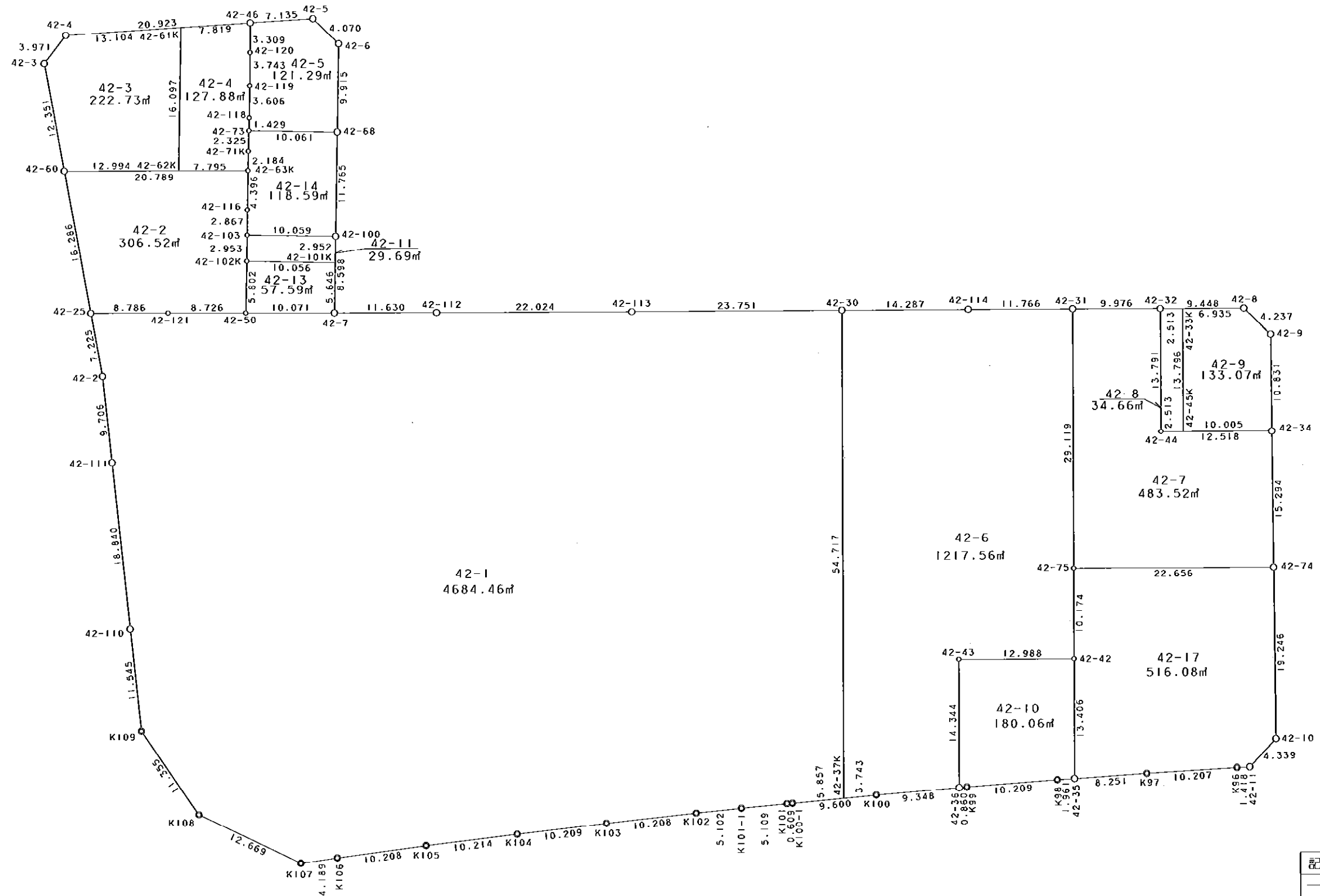


42街区



S = 1 / 500



凡 例

記号	名称
⊙	地区界点
○	街区点
○	画地点(折れ点)
┆	画地点(直線中)

面積 (座標法) 計算書

地番 = 42街区

測点名	[1] X (i)	[2] X (i+1)-X (i-1)	[3] Y (i)	[4] Y (i+1)-Y (i-1)	[2] * [3]	[1] * [4]	方向角	夾角	距離
K109	-149851.444	-7.481	-41359.558	-20.898	309410.853398	3131595.476712	235-56-56	151-31-52	11.355
K108	-149857.802	-17.739	-41368.966	-14.973	733844.087874	2243820.869346	206-03-27	150-06-31	12.669
K107	-149869.183	-15.536	-41374.531	-5.030	642794.713616	753841.990490	172-39-47	146-36-20	4.189
K106	-149873.338	-14.293	-41373.996	1.729	591358.524828	-259131.001402	173-16-59	180-37-12	10.208
K105	-149883.476	-20.293	-41372.802	2.287	839578.270986	-342783.509612	173-51-25	180-34-26	10.214
K104	-149893.631	-20.313	-41371.709	2.112	840383.524917	-316575.348672	174-16-18	180-24-53	10.209
K103	-149903.789	-20.322	-41370.690	1.968	840735.162180	-295010.656752	174-39-57	180-23-39	10.208
K102	-149913.953	-15.247	-41369.741	1.394	630764.441027	-208980.050482	174-59-48	180-19-51	5.102
K101-1	-149919.036	-10.175	-41369.296	0.856	420932.586800	-128330.694816	175-23-07	180-23-19	5.109
K101	-149924.128	-5.700	-41368.885	0.447	235802.644500	-67016.085216	176-36-41	181-13-34	0.609
K100-1	-149924.736	-10.179	-41368.849	0.781	421093.513971	-117091.218816	175-32-57	178-56-16	9.600
K100	-149934.307	-18.898	-41368.104	1.365	781774.429392	-204660.329055	176-11-49	180-38-52	9.348
42-36	-149943.634	-10.185	-41367.484	0.681	421327.824540	-102111.614754	175-56-00	179-44-11	0.860
K99	-149944.492	-11.049	-41367.423	0.667	457068.656727	-100012.976164	176-35-49	180-39-49	10.209
K98	-149954.683	-12.150	-41366.817	0.695	502606.826550	-104218.504685	177-23-56	180-48-07	1.961
42-35	-149956.642	-10.199	-41366.728	0.514	421899.258872	-77077.713988	177-02-51	179-38-55	8.251
K97	-149964.882	-18.437	-41366.303	0.869	762670.528411	-130319.482458	177-30-24	180-27-33	10.207
K96	-149975.079	-11.614	-41365.859	0.483	480423.086426	-72437.963157	178-25-24	180-55-00	1.418
42-11	-149976.496	-4.454	-41365.820	3.138	184243.362280	-470626.244448	134-25-16	135-59-52	4.339
42-10	-149979.533	-3.108	-41362.721	22.345	128555.336868	-3351292.664885	90-12-41	135-47-25	19.246
42-74	-149979.604	-0.138	-41343.475	34.540	5705.399550	-5180295.522160	90-15-04	180-02-23	15.294
42-34	-149979.671	-0.122	-41328.181	26.125	5042.038082	-3918218.904875	90-17-27	180-02-23	10.831
42-9	-149979.726	2.913	-41317.350	13.855	-120357.440550	-2077969.103730	45-32-08	135-14-41	4.237
42-8	-149976.758	12.415	-41314.326	3.151	-512917.357290	-472576.764458	0-46-13	135-14-05	9.448
42-32	-149967.311	19.422	-41314.199	0.292	-802404.372978	-43790.454812	0-56-52	180-10-39	9.976
42-31	-149957.336	21.740	-41314.034	0.335	-898167.099160	-50235.707560	0-49-40	179-52-48	11.766
42-114	-149945.571	26.051	-41313.864	0.351	-1076267.471064	-52630.895421	0-43-33	179-53-53	14.287
42-30	-149931.285	38.035	-41313.683	0.482	-1571365.932905	-72266.879370	0-43-34	180-00-01	23.751
42-113	-149907.536	45.771	-41313.382	0.598	-1890954.807522	-89644.706528	0-46-22	180-02-48	22.024
42-112	-149885.514	33.651	-41313.085	0.453	-1390226.623335	-67898.137842	0-46-07	179-59-45	11.630
42-7	-149873.885	11.371	-41312.929	8.750	-469769.315659	-1311396.493750	91-43-10	270-57-03	8.598
42-100	-149874.143	-0.614	-41304.335	20.354	25360.861690	-3050538.306622	91-44-02	180-00-52	11.765
42-68	-149874.499	-0.658	-41292.575	21.670	27170.514350	-3247780.393330	91-44-44	180-00-42	9.915
42-6	-149874.801	2.609	-41282.665	12.755	-107706.472985	-1911653.086755	44-20-35	132-35-51	4.070
42-5	-149871.890	10.037	-41279.820	2.478	-414325.553340	-371382.543420	357-03-06	132-42-31	7.135
42-46	-149864.764	28.022	-41280.187	-1.422	-1156753.400114	213107.694408	357-06-35	180-03-29	20.923
42-4	-149843.868	23.392	-41281.242	-4.144	-965650.812864	620952.988992	308-56-21	131-49-46	3.971
42-3	-149841.372	0.369	-41284.331	-15.255	-15233.918139	2285830.129860	260-04-59	131-08-38	12.351
42-60	-149843.499	-4.933	-41296.497	-28.208	203715.619701	4226785.419792	260-04-42	179-59-43	16.286
42-25	-149846.305	-4.046	-41312.539	-23.160	167150.532794	3470440.423800	260-07-04	180-02-22	7.225
42-2	-149847.545	-2.196	-41319.657	-16.777	90737.966772	2513992.262465	264-20-51	184-13-47	9.706
42-111	-149848.501	-2.776	-41329.316	-28.411	114730.181216	4257345.761911	264-27-23	180-06-32	18.840
42-110	-149850.321	-2.943	-41348.068	-30.242	121687.364124	4531773.407682	264-25-04	179-57-41	11.545
合計				倍面積 面積	16467.534537 8233.76	-16467.534537 8233.76			430.885

地番	筆種別	面積	坪数
42-1	筆界	4684.46	1417.04
42-2	筆界	306.52	92.72
42-3	筆界	222.73	67.37
42-4	筆界	127.88	38.68
42-5	筆界	121.29	36.69
42-6	筆界	1217.56	368.31
42-7	筆界	483.52	146.26
42-8	筆界	34.66	10.48
42-9	筆界	133.07	40.25
42-10	筆界	180.06	54.46
42-11	筆界	29.69	8.98
42-13	筆界	57.59	17.42
42-14	筆界	118.59	35.87
42-17	筆界	516.08	156.11
	合計	8233.70	2490.64

面積 (座標法) 計算書

地番 = 42-1

測点名	[1] X (i)	[2] X (i+1)-X (i-1)	[3] Y (i)	[4] Y (i+1)-Y (i-1)	[2] * [3]	[1] * [4]	方向角	夾 角	距 離
42-30	-149931.285	23.039	-41313.683	55.013	-951825.942637	-8248169.781705	0-43-34	89-58-57	23.751
42-113	-149907.536	45.771	-41313.382	0.598	-1890954.807522	-89644.706528	0-46-22	180-02-48	22.024
42-112	-149885.514	33.651	-41313.085	0.453	-1390226.623335	-67898.137842	0-46-07	179-59-45	11.630
42-7	-149873.885	21.699	-41312.929	0.299	-896449.246371	-44812.291615	0-48-49	180-02-42	10.071
42-50	-149863.815	18.795	-41312.786	0.282	-776473.812870	-42261.595830	0-54-46	180-05-57	8.726
42-121	-149855.090	17.510	-41312.647	0.247	-723384.448970	-37014.207230	0-42-16	179-47-30	8.786
42-25	-149846.305	7.545	-41312.539	-7.010	-311703.106755	1050422.598050	260-07-04	79-24-48	7.225
42-2	-149847.545	-2.196	-41319.657	-16.777	90737.966772	2513992.262465	264-20-51	184-13-47	9.706
42-111	-149848.501	-2.776	-41329.316	-28.411	114730.181216	4257345.761911	264-27-23	180-06-32	18.840
42-110	-149850.321	-2.943	-41348.068	-30.242	121687.364124	4531773.407682	264-25-04	179-57-41	11.545
K109	-149851.444	-7.481	-41359.558	-20.898	309410.853398	3131595.476712	235-56-56	151-31-52	11.355
K108	-149857.802	-17.739	-41368.966	-14.973	733844.087874	2243820.869346	206-03-27	150-06-31	12.669
K107	-149869.183	-15.536	-41374.531	-5.030	642794.713616	753841.990490	172-39-47	146-36-20	4.189
K106	-149873.338	-14.293	-41373.996	1.729	591358.524828	-259131.001402	173-16-59	180-37-12	10.208
K105	-149883.476	-20.293	-41372.802	2.287	839578.270986	-342783.509612	173-51-25	180-34-26	10.214
K104	-149893.631	-20.313	-41371.709	2.112	840383.524917	-316575.348672	174-16-18	180-24-53	10.209
K103	-149903.789	-20.322	-41370.690	1.968	840735.162180	-295010.656752	174-39-57	180-23-39	10.208
K102	-149913.953	-15.247	-41369.741	1.394	630764.441027	-208980.050482	174-59-48	180-19-51	5.102
K101-1	-149919.036	-10.175	-41369.296	0.856	420932.586800	-128330.694816	175-23-07	180-23-19	5.109
K101	-149924.128	-5.700	-41368.885	0.447	235802.644500	-67016.085216	176-36-41	181-13-34	0.609
K100-1	-149924.736	-6.447	-41368.849	0.490	266704.969503	-73463.120640	175-33-14	178-56-33	5.857
42-37K	-149930.575	-6.549	-41368.395	55.166	270921.618855	-8271070.100450	90-44-37	95-11-23	54.717
合計				倍面積 面積	9368.922136 4684.46	-9368.922136 4684.46			272.750

面積 (座標法) 計算書

地番 = 42-2

測点名	[1] X (i)	[2] X (i+1)-X (i-1)	[3] Y (i)	[4] Y (i+1)-Y (i-1)	[2] * [3]	[1] * [4]	方向角	夾 角	距 離
42-60	-149843.499	17.981	-41296.497	-15.764	-742552.312557	2362132.918236	260-04-42	79-18-44	16.286
42-25	-149846.305	-11.591	-41312.539	-16.150	478853.639549	2420017.825750	180-42-16	100-37-34	8.786
42-121	-149855.090	-17.510	-41312.647	-0.247	723384.448970	37014.207230	180-54-46	180-12-30	8.726
42-50	-149863.815	-8.912	-41312.786	5.660	368179.548832	-848229.192900	91-50-49	90-56-03	5.802
42-102K	-149864.002	-0.273	-41306.987	8.751	11276.807451	-1311459.881502	91-40-07	179-49-18	2.953
42-103	-149864.088	-0.147	-41304.035	5.818	6071.693145	-871909.263984	91-13-09	179-33-02	2.867
42-116	-149864.149	-0.198	-41301.169	7.260	8177.631462	-1088013.721740	91-47-09	180-34-00	4.396
42-63K	-149864.286	20.650	-41296.775	4.672	-852778.403750	-700165.944192	0-45-58	88-58-49	20.789
合計				倍面積 面積	613.053102 306.52	-613.053102 306.52			70.605

面積 (座標法) 計算書

地番 = 42-3
測点名

	[1] X (i)	[2] X (i+1)-X (i-1)	[3] Y (i)	[4] Y (i+1)-Y (i-1)	[2]*[3]	[1]*[4]	方向角	夾角	距離
42-61K	-149856.955	12.624	-41280.581	15.429	-521126.054544	-2312142.958695	357-06-31	85-27-37	13.104
42-4	-149843.868	15.583	-41281.242	-3.750	-643285.594086	561914.505000	308-56-21	131-49-50	3.971
42-3	-149841.372	0.369	-41284.331	-15.255	-15233.918139	2285830.129860	260-04-59	131-08-38	12.351
42-60	-149843.499	-15.120	-41296.497	-12.340	624403.034640	1849068.777660	180-46-02	100-41-03	12.994
42-62K	-149856.492	-13.456	-41296.671	15.916	555688.004976	-2385115.926672	91-38-54	90-52-52	16.097
合計				倍面積 面積	445.472847 222.73	-445.472847 222.73			58.517

面積 (座標法) 計算書

地番 = 42-4
測点名

	[1] X (i)	[2] X (i+1)-X (i-1)	[3] Y (i)	[4] Y (i+1)-Y (i-1)	[2]*[3]	[1]*[4]	方向角	夾角	距離
42-62K	-149856.492	-7.331	-41296.671	-16.194	302745.895101	2426776.031448	180-45-52	89-06-58	7.795
42-63K	-149864.286	-7.862	-41296.775	2.079	324675.245050	-311567.850594	91-47-03	91-01-11	2.184
42-71K	-149864.354	-0.157	-41294.592	4.506	6483.250944	-675288.779124	92-11-39	180-24-36	2.325
42-73	-149864.443	-0.145	-41292.269	3.751	5987.379005	-562141.525693	92-14-45	180-03-06	1.429
42-118	-149864.499	-0.169	-41290.841	5.032	6978.152129	-754118.158968	91-47-45	179-33-00	3.606
42-119	-149864.612	-0.206	-41287.237	7.346	8505.170822	-1100905.439752	91-25-25	179-37-40	3.743
42-120	-149864.705	-0.152	-41283.495	7.050	6275.091240	-1056546.170250	91-01-18	179-35-53	3.309
42-46	-149864.764	7.750	-41280.187	2.914	-319921.449250	-436705.922296	357-06-42	86-05-24	7.819
42-61K	-149856.955	8.272	-41280.581	-16.484	-341472.966032	2470242.046220	271-38-54	94-32-12	16.097
合計				倍面積 面積	255.769009 127.88	-255.769009 127.88			48.307

面積 (座標法) 計算書

地番 = 42-5
測点名

	[1] X (i)	[2] X (i+1)-X (i-1)	[3] Y (i)	[4] Y (i+1)-Y (i-1)	[2]*[3]	[1]*[4]	方向角	夾角	距離
42-73	-149864.443	-10.000	-41292.269	-1.734	412922.690000	259864.944162	181-44-35	89-29-50	10.061
42-68	-149874.499	-10.358	-41292.575	9.604	427708.491850	-1439394.688396	91-44-44	90-00-09	9.915
42-6	-149874.801	2.609	-41282.665	12.755	-107706.472985	-1911653.086755	44-20-35	132-35-51	4.070
42-5	-149871.890	10.037	-41279.820	2.478	-414325.553340	-371382.543420	357-03-06	132-42-31	7.135
42-46	-149864.764	7.185	-41280.187	-3.675	-296598.143595	550753.007700	271-01-18	93-58-12	3.309
42-120	-149864.705	0.152	-41283.495	-7.050	-6275.091240	1056546.170250	271-25-25	180-24-07	3.743
42-119	-149864.612	0.206	-41287.237	-7.346	-8505.170822	1100905.439752	271-47-45	180-22-20	3.606
42-118	-149864.499	0.169	-41290.841	-5.032	-6978.152129	754118.158968	272-14-45	180-27-00	1.429
合計				倍面積 面積	242.597739 121.29	-242.597739 121.29			43.268

面積 (座標法) 計算書

地番 = 42-6
測点名

	[1] X (i)	[2] X (i+1)-X (i-1)	[3] Y (i)	[4] Y (i+1)-Y (i-1)	[2] * [3]	[1] * [4]	方向角	夾角	距離
42-30	-149931.285	14.996	-41313.683	-54.531	-619539.990268	8175902.902335	270-44-37	90-01-04	54.717
42-37K	-149930.575	-3.022	-41368.395	-54.421	125015.289690	8159371.822075	175-32-29	84-47-52	3.743
K100	-149934.307	-13.059	-41368.104	0.911	540226.070136	-136590.153677	176-11-49	180-39-20	9.348
42-36	-149943.634	-9.520	-41367.484	14.963	393818.447680	-2243606.595542	90-46-15	94-34-26	14.344
42-43	-149943.827	-13.180	-41353.141	14.161	545034.398380	-2123354.534147	180-48-10	270-01-55	12.988
42-42	-149956.814	-13.123	-41353.323	9.991	542679.657729	-1498218.528674	90-45-57	89-57-47	10.174
42-75	-149956.950	-0.522	-41343.150	39.289	21581.124300	-5891658.608550	90-45-34	179-59-37	29.119
42-31	-149957.336	11.379	-41314.034	29.286	-470112.392886	-4391650.542096	0-49-40	90-04-06	11.766
42-114	-149945.571	26.051	-41313.864	0.351	-1076267.471064	-52630.895421	0-43-33	179-53-53	14.287
合計				倍面積 面積	2435.133697 1217.56	-2435.133697 1217.56			160.486

面積 (座標法) 計算書

地番 = 42-7
測点名

	[1] X (i)	[2] X (i+1)-X (i-1)	[3] Y (i)	[4] Y (i+1)-Y (i-1)	[2] * [3]	[1] * [4]	方向角	夾角	距離
42-75	-149956.950	-22.268	-41343.150	-29.441	920629.264200	4414882.564950	180-49-19	90-03-45	22.656
42-74	-149979.604	-22.721	-41343.475	14.969	939365.095475	-2245044.692276	90-15-04	89-25-45	15.294
42-34	-149979.671	12.450	-41328.181	15.486	-514535.853450	-2322585.185106	0-52-44	90-37-40	12.518
42-44	-149967.154	12.360	-41327.989	13.982	-510813.944040	-2096840.747228	90-39-08	269-46-24	13.791
42-32	-149967.311	9.818	-41314.199	13.955	-405622.805782	-2092793.825005	0-56-52	90-17-44	9.976
42-31	-149957.336	10.361	-41314.034	-28.951	-428054.706274	4341414.834536	270-45-34	89-48-42	29.119
合計				倍面積 面積	967.050129 483.52	-967.050129 483.52			103.354

面積 (座標法) 計算書

地番 = 42-8
測点名

	[1] X (i)	[2] X (i+1)-X (i-1)	[3] Y (i)	[4] Y (i+1)-Y (i-1)	[2] * [3]	[1] * [4]	方向角	夾角	距離
42-33K	-149969.824	2.356	-41314.233	13.829	-97336.332948	-2073932.696096	0-46-31	90-07-24	2.513
42-32	-149967.311	2.670	-41314.199	-13.756	-110308.911330	2062950.330116	270-39-08	89-52-37	13.791
42-44	-149967.154	-2.356	-41327.989	-13.829	97368.742084	2073895.772666	180-53-21	90-14-13	2.513
42-45K	-149969.667	-2.670	-41328.028	13.756	110345.834760	-2062982.739252	90-39-07	89-45-46	13.796
合計				倍面積 面積	69.332566 34.66	-69.332566 34.66			32.613

面積 (座標法) 計算書

地番 = 42-9
測点名

	[1] X (i)	[2] X (i+1)-X (i-1)	[3] Y (i)	[4] Y (i+1)-Y (i-1)	[2] * [3]	[1] * [4]	方向角	夾角	距離
42-45K	-149969.667	-9.847	-41328.028	-13.948	406957.091716	2091776.915316	180-52-34	90-13-27	10.005
42-34	-149979.671	-10.059	-41328.181	10.678	415720.172679	-1601482.926938	90-17-27	89-24-53	10.831
42-9	-149979.726	2.913	-41317.350	13.855	-120357.440550	-2077969.103730	45-32-08	135-14-41	4.237
42-8	-149976.758	9.902	-41314.326	3.117	-409094.456052	-467477.554686	0-46-06	135-13-58	6.935
42-33K	-149969.824	7.091	-41314.233	-13.702	-292959.226203	2054886.528448	270-39-07	89-53-01	13.796
合計				倍面積 面積	266.141590 133.07	-266.141590 133.07			45.804

面積 (座標法) 計算書

地番 = 42-10
測点名

	[1] X (i)	[2] X (i+1)-X (i-1)	[3] Y (i)	[4] Y (i+1)-Y (i-1)	[2] * [3]	[1] * [4]	方向角	夾角	距離
42-36	-149943.634	-0.665	-41367.484	-14.282	27509.376860	2141494.980788	175-56-00	85-09-45	0.860
K99	-149944.492	-11.049	-41367.423	0.667	457068.656727	-100012.976164	176-35-49	180-39-49	10.209
K98	-149954.683	-12.150	-41366.817	0.695	502606.826550	-104218.504685	177-23-56	180-48-07	1.961
42-35	-149956.642	-2.131	-41366.728	13.494	88152.497368	-2023514.927148	90-44-06	93-20-10	13.406
42-42	-149956.814	12.815	-41353.323	13.587	-529942.834245	-2037463.231818	0-48-10	90-04-04	12.988
42-43	-149943.827	13.180	-41353.141	-14.161	-545034.398380	2123354.534147	270-46-15	89-58-05	14.344
合計				倍面積 面積	360.124880 180.06	-360.124880 180.06			53.768

面積 (座標法) 計算書

地番 = 42-11
測点名

	[1] X (i)	[2] X (i+1)-X (i-1)	[3] Y (i)	[4] Y (i+1)-Y (i-1)	[2] * [3]	[1] * [4]	方向角	夾角	距離
42-101K	-149874.054	-10.141	-41307.286	2.652	418897.187326	-397465.991208	91-43-39	90-01-25	2.952
42-100	-149874.143	9.966	-41304.335	3.251	-411639.002610	-487240.838893	1-42-32	89-58-53	10.059
42-103	-149864.088	10.141	-41304.035	-2.652	-418864.218935	397439.561376	271-40-07	89-57-35	2.953
42-102K	-149864.002	-9.966	-41306.987	-3.251	411665.432442	487207.870502	181-42-14	90-02-07	10.056
合計				倍面積 面積	59.398223 29.69	-59.398223 29.69			26.020

面積 (座標法) 計算書

地番 = 42-13
測点名

	[1] X (i)	[2] X (i+1)-X (i-1)	[3] Y (i)	[4] Y (i+1)-Y (i-1)	[2] * [3]	[1] * [4]	方向角	夾角	距離
42-102K	-149864.002	10.239	-41306.987	-5.500	-422942.239893	824252.011000	271-50-49	90-08-35	5.802
42-50	-149863.815	-9.883	-41312.786	-5.942	408294.264038	890490.788730	180-48-49	88-58-00	10.071
42-7	-149873.885	-10.239	-41312.929	5.500	423003.080031	-824306.367500	91-42-55	90-54-06	5.646
42-101K	-149874.054	9.883	-41307.286	5.942	-408239.907538	-890551.628868	1-42-14	89-59-19	10.056
合計				倍面積 面積	115.196638 57.59	-115.196638 57.59			31.575

面積 (座標法) 計算書

地番 = 42-14

測点名	[1] X (i)	[2] X (i+1)-X (i-1)	[3] Y (i)	[4] Y (i+1)-Y (i-1)	[2] * [3]	[1] * [4]	方向角	夾 角	距 離
42-73	-149864.443	10.145	-41292.269	-2.017	-418910.069005	302276.581531	272-11-39	90-27-04	2.325
42-71K	-149864.354	0.157	-41294.592	-4.506	-6483.250944	675288.779124	271-47-03	179-35-24	2.184
42-63K	-149864.286	0.205	-41296.775	-6.577	-8465.838875	985657.409022	271-47-09	180-00-06	4.396
42-116	-149864.149	0.198	-41301.169	-7.260	-8177.631462	1088013.721740	271-13-09	179-26-00	2.867
42-103	-149864.088	-9.994	-41304.035	-3.166	412792.525790	474469.702608	181-42-32	90-29-23	10.059
42-100	-149874.143	-10.411	-41304.335	11.460	430019.431685	-1717557.678780	91-44-02	90-01-30	11.765
42-68	-149874.499	9.700	-41292.575	12.066	-400537.977500	-1808385.704934	1-44-35	90-00-33	10.061
合計				倍面積 面積	237.189689 118.59	-237.189689 118.59			43.657

面積 (座標法) 計算書

地番 = 42-17

測点名	[1] X (i)	[2] X (i+1)-X (i-1)	[3] Y (i)	[4] Y (i+1)-Y (i-1)	[2] * [3]	[1] * [4]	方向角	夾 角	距 離
42-35	-149956.642	-8.068	-41366.728	-12.980	333746.761504	1946437.213160	177-02-51	86-18-45	8.251
K97	-149964.882	-18.437	-41366.303	0.869	762670.528411	-130319.482458	177-30-24	180-27-33	10.207
K96	-149975.079	-11.614	-41365.859	0.483	480423.086426	-72437.963157	178-25-24	180-55-00	1.418
42-11	-149976.496	-4.454	-41365.820	3.138	184243.362280	-470626.244448	134-25-16	135-59-52	4.339
42-10	-149979.533	-3.108	-41362.721	22.345	128555.336868	-3351292.664885	90-12-41	135-47-25	19.246
42-74	-149979.604	22.583	-41343.475	19.571	-933659.695925	-2935250.829884	0-49-19	90-36-38	22.656
42-75	-149956.950	22.790	-41343.150	-9.848	-942210.388500	1476776.043600	270-45-57	89-56-38	10.174
42-42	-149956.814	0.308	-41353.323	-23.578	-12736.823484	3535681.760492	270-44-06	179-58-09	13.406
合計				倍面積 面積	1032.167580 516.08	-1032.167580 516.08			89.697