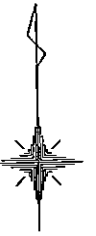
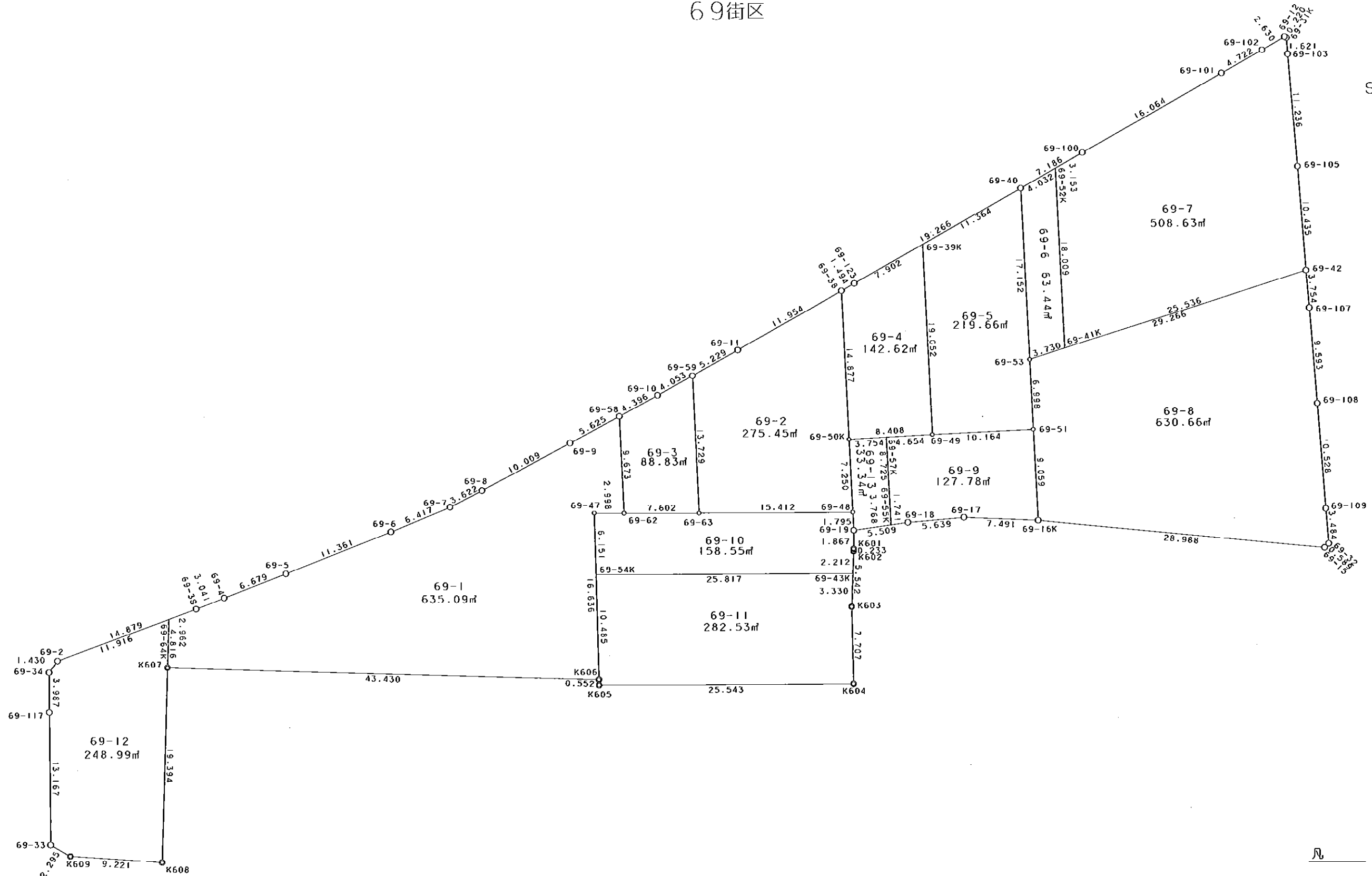


69街区



S = 1 / 400



凡 例

記号	名称
⊙	地区界点
○	街区点
○	画地点(折れ点)
┆	画地点(直線中)

面積 (座標法) 計算書

地番 = 69街区

測点名	[1] X (i)	[2] X (i+1)-X (i-1)	[3] Y (i)	[4] Y (i+1)-Y (i-1)	[2] * [3]	[1] * [4]	方向角	夾角	距離
69-2	-149735.353	-6.178	-40752.319	-14.855	251767.826782	2224318.668815	216-33-27	146-18-45	1.430
69-34	-149736.502	-5.136	-40753.171	-0.850	209308.286256	127276.026700	179-58-17	143-24-50	3.987
69-117	-149740.489	-17.154	-40753.169	0.038	699079.861026	-5690.138582	179-50-36	179-52-19	13.167
69-33	-149753.656	-14.325	-40753.133	2.018	583788.630225	-302202.877808	120-17-45	120-27-09	2.295
K609	-149754.814	-1.864	-40751.151	11.176	75960.145464	-1673659.801264	94-23-28	154-05-43	9.221
K608	-149755.520	18.676	-40741.957	9.877	-760896.788932	-1479135.271040	2-01-06	87-37-38	19.394
K607	-149736.138	17.665	-40741.274	44.079	-719694.605210	-6600219.226902	92-15-57	270-14-51	43.430
K606	-149737.855	-2.269	-40697.878	43.403	92343.485182	-6499072.120565	179-16-24	267-00-27	0.552
K605	-149738.407	-0.817	-40697.871	25.549	33250.160607	-3825666.560443	90-35-40	91-19-16	25.543
K604	-149738.672	7.442	-40672.329	25.460	-302683.472418	-3812346.589120	359-23-25	88-47-45	7.707
K603	-149730.965	13.242	-40672.411	0.195	-538584.066462	-29197.538175	2-51-54	183-28-29	5.542
K602	-149725.430	5.768	-40672.134	0.285	-234596.868912	-42671.747550	1-57-59	179-06-05	0.233
K601	-149725.197	2.100	-40672.126	0.040	-85411.464600	-5989.007880	0-58-55	179-00-56	1.867
69-19	-149723.330	2.553	-40672.094	5.498	-103835.855982	-823178.868340	82-50-48	261-51-53	5.509
69-18	-149722.644	1.093	-40666.628	11.090	-44448.624404	-1660424.121960	85-51-39	183-00-51	5.639
69-17	-149722.237	-0.008	-40661.004	13.103	325.288032	-1961810.471411	93-10-34	187-18-55	7.491
69-16K	-149722.652	-3.624	-40653.525	36.289	147328.374600	-5433285.318428	96-21-20	183-10-46	28.988
69-15	-149725.861	-2.805	-40624.715	29.238	113952.325575	-4377684.723918	46-39-08	130-17-48	0.589
69-32	-149725.457	3.880	-40624.287	0.185	-157622.233560	-27699.209545	356-00-04	129-20-56	3.484
69-109	-149721.981	13.982	-40624.530	-0.926	-568012.178460	138642.554406	356-16-49	180-16-45	10.528
69-108	-149711.475	20.078	-40625.213	-1.312	-815673.026614	196421.455200	356-14-25	179-57-36	9.593
69-107	-149701.903	13.316	-40625.842	-0.903	-540973.712072	135180.818409	355-48-52	179-34-27	3.754
69-42	-149698.159	14.157	-40626.116	-0.953	-575143.924212	142662.345527	356-16-09	180-27-17	10.435
69-105	-149687.746	21.619	-40626.795	-1.498	-878310.681105	224232.243508	355-49-12	179-33-03	11.236
69-103	-149676.540	12.824	-40627.614	-0.919	-521008.521936	137552.740260	356-27-48	180-38-36	1.621
69-31K	-149674.922	1.717	-40627.714	-0.296	-69757.784938	44303.776912	296-47-54	120-20-06	0.220
69-12	-149674.823	-1.170	-40627.910	-2.500	47534.654700	374187.057500	241-09-17	124-21-23	2.630
69-102	-149676.092	-3.519	-40630.214	-6.456	142977.723066	966308.849952	241-32-47	180-23-30	4.722
69-101	-149678.342	-9.930	-40634.366	-18.261	403499.254380	2733276.203262	241-26-21	179-53-34	16.064
69-100	-149686.022	-11.125	-40648.475	-20.415	452214.284375	3055840.139130	241-21-07	179-54-46	7.186
69-40	-149689.467	-12.688	-40654.781	-23.210	515827.861328	3474292.529070	241-19-50	179-58-43	19.266
69-123	-149698.710	-9.957	-40671.685	-18.216	404967.967545	2726911.701360	241-26-41	180-06-51	1.494
69-38	-149699.424	-6.480	-40672.997	-11.784	263561.020560	1764058.012416	241-09-44	179-43-03	11.954
69-11	-149705.190	-8.240	-40683.469	-15.079	335231.784560	2257404.560010	241-45-50	180-36-06	5.229
69-59	-149707.664	-4.391	-40688.076	-8.178	178661.341716	1224309.276192	241-46-19	180-00-29	4.053
69-10	-149709.581	-3.957	-40691.647	-7.465	161016.847179	1117582.022165	242-21-03	180-34-44	4.396
69-58	-149711.621	-4.655	-40695.541	-8.874	189437.743355	1328540.924754	242-17-46	179-56-43	5.625
69-9	-149714.236	-7.207	-40700.521	-13.874	293328.654847	2077135.310264	242-41-33	180-23-47	10.009
69-8	-149718.828	-6.220	-40709.415	-12.129	253212.561300	1815939.664812	243-17-11	180-35-38	3.622
69-7	-149720.456	-3.988	-40712.650	-9.202	162362.048200	1377727.636112	248-25-15	185-08-04	6.417
69-6	-149722.816	-6.439	-40718.617	-16.571	262187.174863	2481056.783936	248-57-36	180-32-21	11.361
69-5	-149726.895	-6.421	-40729.221	-16.859	261522.328041	2524245.722805	249-28-23	180-30-47	6.679
69-4	-149729.237	-3.429	-40735.476	-9.095	139681.947204	1361787.410515	249-03-21	179-34-58	3.041
69-3S	-149730.324	-6.116	-40738.316	-16.843	249155.540656	2521907.847132	250-14-42	181-11-21	14.879
合計				倍面積 面積	6831.311807 3415.65	-6831.311807 3415.65			372.082

地番	筆種別	面積	坪数
69-1	筆界	635.09	192.11
69-2	筆界	275.45	83.32
69-3	筆界	88.83	26.87
69-4	筆界	142.62	43.14
69-5	筆界	219.66	66.44
69-6	筆界	63.44	19.19
69-7	筆界	508.63	153.86
69-8	筆界	630.66	190.77
69-9	筆界	127.78	38.65
69-10	筆界	158.55	47.96
69-11	筆界	282.53	85.46
69-12	筆界	248.99	75.32
69-13	筆界	33.34	10.08
	合計	3415.57	1033.17

面積 (座標法) 計算書

地番 = 69-1

測点名	[1] X (i)	[2] X (i+1)-X (i-1)	[3] Y (i)	[4] Y (i+1)-Y (i-1)	[2] * [3]	[1] * [4]	方向角	夾角	距離
69-64K	-149731.325	-5.814	-40741.104	-2.958	236868.778656	442905.259350	182-01-22	111-46-22	4.816
K607	-149736.138	-6.530	-40741.274	43.226	266040.519220	-6472494.301188	92-15-57	90-14-35	43.430
K606	-149737.855	14.916	-40697.878	43.105	-607049.548248	-6454450.239775	358-59-52	86-43-55	16.636
69-47	-149721.222	16.568	-40698.169	2.706	-674287.263992	-405145.626732	91-14-33	272-14-41	2.998
69-62	-149721.287	9.601	-40695.172	2.628	-390714.346372	-393467.542236	357-48-50	86-34-17	9.673
69-58	-149711.621	7.051	-40695.541	-5.349	-286944.259591	800807.460729	242-17-46	64-28-56	5.625
69-9	-149714.236	-7.207	-40700.521	-13.874	293328.654847	2077135.310264	242-41-33	180-23-47	10.009
69-8	-149718.828	-6.220	-40709.415	-12.129	253212.561300	1815939.664812	243-17-11	180-35-38	3.622
69-7	-149720.456	-3.988	-40712.650	-9.202	162362.048200	1377727.636112	248-25-15	185-08-04	6.417
69-6	-149722.816	-6.439	-40718.617	-16.571	262187.174863	2481056.783936	248-57-36	180-32-21	11.361
69-5	-149726.895	-6.421	-40729.221	-16.859	261522.328041	2524245.722805	249-28-23	180-30-47	6.679
69-4	-149729.237	-3.429	-40735.476	-9.095	139681.947204	1361787.410515	249-03-21	179-34-58	3.041
69-3S	-149730.324	-2.088	-40738.316	-5.628	85061.603808	842682.263472	250-15-00	181-11-39	2.962
合計				倍面積 面積	1270.197936 635.09	-1270.197936 635.09			127.269

面積 (座標法) 計算書

地番 = 69-2

測点名	[1] X (i)	[2] X (i+1)-X (i-1)	[3] Y (i)	[4] Y (i+1)-Y (i-1)	[2] * [3]	[1] * [4]	方向角	夾角	距離
69-59	-149707.664	-16.194	-40688.076	-4.102	658902.702744	614100.837728	177-53-31	116-07-41	13.729
69-63	-149721.384	-13.872	-40687.571	15.916	564417.984912	-2382965.547744	90-33-54	92-40-23	15.412
69-48	-149721.536	7.093	-40672.160	15.131	-288487.630880	-2265436.561216	357-47-12	87-13-18	7.250
69-50K	-149714.291	22.112	-40672.440	-0.837	-899348.993280	125310.861567	357-51-16	180-04-04	14.877
69-38	-149699.424	9.101	-40672.997	-11.029	-370164.945697	1651034.947296	241-09-44	63-18-28	11.954
69-11	-149705.190	-8.240	-40683.469	-15.079	335231.784560	2257404.560010	241-45-50	180-36-06	5.229
合計				倍面積 面積	550.902359 275.45	-550.902359 275.45			68.451

面積 (座標法) 計算書

地番 = 69-3

測点名	[1] X (i)	[2] X (i+1)-X (i-1)	[3] Y (i)	[4] Y (i+1)-Y (i-1)	[2] * [3]	[1] * [4]	方向角	夾角	距離
69-58	-149711.621	-11.706	-40695.541	-3.525	476382.002946	527733.464025	177-48-50	115-27-47	9.673
69-62	-149721.287	-9.763	-40695.172	7.970	397306.964236	-1193278.657390	90-43-52	92-55-02	7.602
69-63	-149721.384	13.623	-40687.571	7.096	-554286.779733	-1062422.940864	357-53-31	87-09-39	13.729
69-59	-149707.664	11.803	-40688.076	-4.076	-480241.361028	610208.438464	241-46-19	63-52-48	4.053
69-10	-149709.581	-3.957	-40691.647	-7.465	161016.847179	1117582.022165	242-21-03	180-34-44	4.396
合計				倍面積 面積	177.673600 88.83	-177.673600 88.83			39.453

面積 (座標法) 計算書

地番 = 69-4
測点名

	[1] X (i)	[2] X (i+1)-X (i-1)	[3] Y (i)	[4] Y (i+1)-Y (i-1)	[2] * [3]	[1] * [4]	方向角	夾角	距離
69-39K	-149694.919	15.248	-40664.752	-7.646	-620056.138496	1144567.350674	241-19-48	63-28-29	7.902
69-123	-149698.710	-4.505	-40671.685	-8.245	183225.940925	1234265.863950	241-26-41	180-06-53	1.494
69-38	-149699.424	-15.581	-40672.997	-0.755	633725.966257	113023.065120	177-51-16	116-24-35	14.877
69-50K	-149714.291	-14.534	-40672.440	8.958	591133.242960	-1341140.618778	87-43-48	89-52-32	8.408
69-49	-149713.958	19.372	-40664.039	7.688	-787743.763508	-1151000.909104	357-51-19	90-07-31	19.052
合計				倍面積 面積	285.248138 142.62	-285.248138 142.62			51.733

面積 (座標法) 計算書

地番 = 69-5
測点名

	[1] X (i)	[2] X (i+1)-X (i-1)	[3] Y (i)	[4] Y (i+1)-Y (i-1)	[2] * [3]	[1] * [4]	方向角	夾角	距離
69-49	-149713.958	-18.681	-40664.039	10.871	759644.912559	-1627540.437418	87-58-54	90-07-35	10.164
69-51	-149713.600	7.351	-40653.881	9.903	-298846.679231	-1482613.780800	357-54-42	89-55-48	6.998
69-53	-149706.607	24.133	-40654.136	-0.900	-981106.264088	134735.946300	357-50-42	179-56-00	17.152
69-40	-149689.467	11.688	-40654.781	-10.616	-475173.080328	1589103.381672	241-19-51	63-29-09	11.364
69-39K	-149694.919	-24.491	-40664.752	-9.258	995920.441232	1385875.560102	177-51-19	116-31-28	19.052
合計				倍面積 面積	439.330144 219.66	-439.330144 219.66			64.730

面積 (座標法) 計算書

地番 = 69-6
測点名

	[1] X (i)	[2] X (i+1)-X (i-1)	[3] Y (i)	[4] Y (i+1)-Y (i-1)	[2] * [3]	[1] * [4]	方向角	夾角	距離
69-52K	-149687.534	16.063	-40651.242	-4.216	-652980.900246	631082.643344	241-21-24	63-30-40	4.032
69-40	-149689.467	-19.073	-40654.781	-2.894	775408.638013	433201.317498	177-50-42	116-29-18	17.152
69-53	-149706.607	-16.063	-40654.136	4.216	653027.386568	-631163.055112	73-13-01	75-22-19	3.730
69-41K	-149705.530	19.073	-40650.565	2.894	-775328.226245	-433247.803820	357-50-44	104-37-43	18.009
合計				倍面積 面積	126.898090 63.44	-126.898090 63.44			42.923

面積 (座標法) 計算書

地番 = 69-7
測点名

	[1] X (i)	[2] X (i+1)-X (i-1)	[3] Y (i)	[4] Y (i+1)-Y (i-1)	[2] * [3]	[1] * [4]	方向角	夾角	距離
69-41K	-149705.530	-10.625	-40650.565	25.126	431912.253125	-3761501.146780	73-13-22	75-22-38	25.536
69-42	-149698.159	17.784	-40626.116	23.770	-722494.846944	-3558325.239430	356-16-09	103-02-47	10.435
69-105	-149687.746	21.619	-40626.795	-1.498	-878310.681105	224232.243508	355-49-12	179-33-03	11.236
69-103	-149676.540	12.824	-40627.614	-0.919	-521008.521936	137552.740260	356-27-48	180-38-36	1.621
69-31K	-149674.922	1.717	-40627.714	-0.296	-69757.784938	44303.776912	296-47-54	120-20-06	0.220
69-12	-149674.823	-1.170	-40627.910	-2.500	47534.654700	374187.057500	241-09-17	124-21-23	2.630
69-102	-149676.092	-3.519	-40630.214	-6.456	142977.723066	966308.849952	241-32-47	180-23-30	4.722
69-101	-149678.342	-9.930	-40634.366	-18.261	403499.254380	2733276.203262	241-26-21	179-53-34	16.064
69-100	-149686.022	-9.192	-40648.475	-16.876	373640.782200	2526101.307272	241-20-46	179-54-25	3.153
69-52K	-149687.534	-19.508	-40651.242	-2.090	793024.428936	312846.946060	177-50-44	116-29-58	18.009
合計				倍面積 面積	1017.261484 508.63	-1017.261484 508.63			93.626

面積 (座標法) 計算書

地番 = 69-8
測点名

	[1] X (i)	[2] X (i+1)-X (i-1)	[3] Y (i)	[4] Y (i+1)-Y (i-1)	[2] * [3]	[1] * [4]	方向角	夾角	距離
69-53	-149706.607	-15.441	-40654.136	-27.765	627740.513976	4156603.943355	177-54-42	104-41-23	6.998
69-51	-149713.600	-16.045	-40653.881	0.611	652291.520645	-91475.009600	177-44-52	179-50-10	9.059
69-16K	-149722.652	-12.261	-40653.525	29.166	498452.870025	-4366810.868232	96-21-20	98-36-28	28.988
69-15	-149725.861	-2.805	-40624.715	29.238	113952.325575	-4377684.723918	46-39-08	130-17-48	0.589
69-32	-149725.457	3.880	-40624.287	0.185	-157622.233560	-27699.209545	356-00-04	129-20-56	3.484
69-109	-149721.981	13.982	-40624.530	-0.926	-568012.178460	138642.554406	356-16-49	180-16-45	10.528
69-108	-149711.475	20.078	-40625.213	-1.312	-815673.026614	196421.455200	356-14-25	179-57-36	9.593
69-107	-149701.903	13.316	-40625.842	-0.903	-540973.712072	135180.818409	355-48-52	179-34-27	3.754
69-42	-149698.159	-4.704	-40626.116	-28.294	191105.249664	4235559.710746	253-13-19	77-24-27	29.266
合計				倍面積 面積	1261.329179 630.66	-1261.329179 630.66			102.259

面積 (座標法) 計算書

地番 = 69-9
測点名

	[1] X (i)	[2] X (i+1)-X (i-1)	[3] Y (i)	[4] Y (i+1)-Y (i-1)	[2] * [3]	[1] * [4]	方向角	夾角	距離
69-55K	-149722.861	-8.502	-40668.355	2.061	345762.354210	-308578.816521	82-50-18	85-01-56	1.741
69-18	-149722.644	0.624	-40666.628	7.351	-25375.975872	-1100611.156044	85-51-39	183-01-21	5.639
69-17	-149722.237	-0.008	-40661.004	13.103	325.288032	-1961810.471411	93-10-34	187-18-55	7.491
69-16K	-149722.652	8.637	-40653.525	7.123	-351124.495425	-1066474.450196	357-44-52	84-34-18	9.059
69-51	-149713.600	8.694	-40653.881	-10.514	-353444.841414	1574088.790400	267-58-54	90-14-02	10.164
69-49	-149713.958	-0.542	-40664.039	-14.808	22039.909138	2216964.290064	267-44-02	179-45-08	4.654
69-57K	-149714.142	-8.903	-40668.689	-4.316	362073.338167	646166.236872	177-48-22	90-04-20	8.725
合計				倍面積 面積	255.576836 127.78	-255.576836 127.78			47.473

面積 (座標法) 計算書

地番 = 69-10

測点名	[1] X (i)	[2] X (i+1)-X (i-1)	[3] Y (i)	[4] Y (i+1)-Y (i-1)	[2] * [3]	[1] * [4]	方向角	夾角	距離
69-43K	-149727.639	1.942	-40672.245	25.927	-78985.499790	-3881988.496353	2-52-36	92-17-03	2.212
K602	-149725.430	2.442	-40672.134	0.119	-99321.351228	-17817.326170	1-57-59	179-05-23	0.233
K601	-149725.197	2.100	-40672.126	0.040	-85411.464600	-5989.007880	0-58-55	179-00-56	1.867
69-19	-149723.330	3.661	-40672.094	-0.034	-148900.536134	5090.593220	357-53-35	176-54-40	1.795
69-48	-149721.536	1.946	-40672.160	-15.477	-79148.023360	2317240.212672	270-33-54	92-40-19	15.412
69-63	-149721.384	0.249	-40687.571	-23.012	-10131.205179	3445388.488608	270-43-52	180-09-58	7.602
69-62	-149721.287	0.162	-40695.172	-10.598	-6592.617864	1586746.199626	271-14-33	180-30-41	2.998
69-47	-149721.222	-6.085	-40698.169	-2.889	247648.358365	432544.610358	178-59-38	87-45-05	6.151
69-54K	-149727.372	-6.417	-40698.061	25.924	261159.457437	-3881532.391728	90-35-33	91-35-55	25.817
合計				倍面積 面積	317.117647 158.55	-317.117647 158.55			64.087

面積 (座標法) 計算書

地番 = 69-11

測点名	[1] X (i)	[2] X (i+1)-X (i-1)	[3] Y (i)	[4] Y (i+1)-Y (i-1)	[2] * [3]	[1] * [4]	方向角	夾角	距離
69-54K	-149727.372	-10.216	-40698.061	-25.633	415771.391176	3837961.726476	179-00-00	88-24-27	10.485
K606	-149737.855	-11.035	-40697.878	0.190	449101.083730	-28450.192450	179-16-24	180-16-24	0.552
K605	-149738.407	-0.817	-40697.871	25.549	33250.160607	-3825666.560443	90-35-40	91-19-16	25.543
K604	-149738.672	7.442	-40672.329	25.460	-302683.472418	-3812346.589120	359-23-25	88-47-45	7.707
K603	-149730.965	11.033	-40672.411	0.084	-448738.710563	-12577.401060	2-51-26	183-28-01	3.330
69-43K	-149727.639	3.593	-40672.245	-25.650	-146135.376285	3840513.940350	270-35-33	87-44-07	25.817
合計				倍面積 面積	565.076247 282.53	-565.076247 282.53			73.434

面積 (座標法) 計算書

地番 = 69-12

測点名	[1] X (i)	[2] X (i+1)-X (i-1)	[3] Y (i)	[4] Y (i+1)-Y (i-1)	[2] * [3]	[1] * [4]	方向角	夾角	距離
69-64K	-149731.325	0.785	-40741.104	-11.045	-31981.766640	1653782.484625	250-14-37	68-13-15	11.916
69-2	-149735.353	-5.177	-40752.319	-12.067	210974.755463	1806856.504651	216-33-27	146-18-50	1.430
69-34	-149736.502	-5.136	-40753.171	-0.850	209308.286256	127276.026700	179-58-17	143-24-50	3.987
69-117	-149740.489	-17.154	-40753.169	0.038	699079.861026	-5690.138582	179-50-36	179-52-19	13.167
69-33	-149753.656	-14.325	-40753.133	2.018	583788.630225	-302202.877808	120-17-45	120-27-09	2.295
K609	-149754.814	-1.864	-40751.151	11.176	75960.145464	-1673659.801264	94-23-28	154-05-43	9.221
K608	-149755.520	18.676	-40741.957	9.877	-760896.788932	-1479135.271040	2-01-06	87-37-38	19.394
K607	-149736.138	24.195	-40741.274	0.853	-985735.124430	-127724.925714	2-01-22	180-00-16	4.816
合計				倍面積 面積	497.998432 248.99	-497.998432 248.99			66.226

面積 (座標法) 計算書

地番 = 69-13
測点名

	[1] X (i)	[2] X (i+1) - X (i-1)	[3] Y (i)	[4] Y (i+1) - Y (i-1)	[2] * [3]	[1] * [4]	方向角	夾角	距離
69-57K	-149714.142	8.570	-40668.689	-4.085	-348530.664730	611582.270070	267-43-31	89-55-09	3.754
69-50K	-149714.291	-7.394	-40672.440	-3.471	300732.021360	519658.304061	177-47-12	90-03-41	7.250
69-48	-149721.536	-9.039	-40672.160	0.346	367635.654240	-51803.651456	177-53-35	180-06-23	1.795
69-19	-149723.330	-1.325	-40672.094	3.805	53890.524550	-569697.270650	82-51-02	84-57-27	3.768
69-55K	-149722.861	9.188	-40668.355	3.405	-373660.845740	-509806.341705	357-48-22	94-57-20	8.725
合計					66.689680	-66.689680			25.292
				倍面積 面積	33.34	33.34			