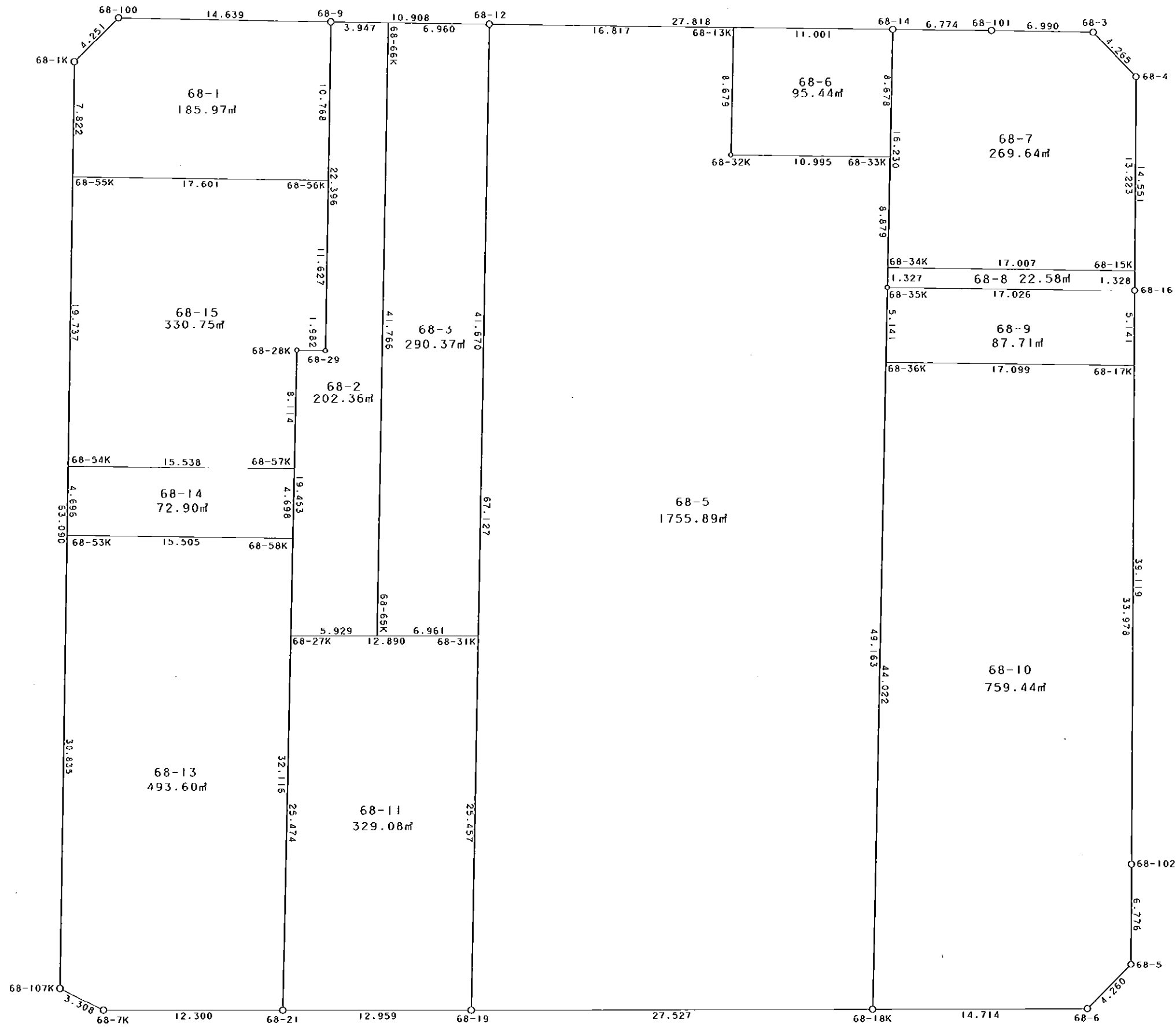


68街区



S = 1 / 300



凡 例

記号	名称
⊙	地区界点
○	街区点
○	画地点 (折れ点)
┆	画地点 (直線中)

面積 (座標法) 計算書

地番 = 68街区

測点名	[1] X (i)	[2] X (i+1)-X (i-1)	[3] Y (i)	[4] Y (i+1)-Y (i-1)	[2] * [3]	[1] * [4]	方向角	夾角	距離
68-100	-150007.666	-3.791	-40934.210	-17.461	155181.590110	2619283.856026	221-49-30	134-15-51	4.251
68-1K	-150010.834	-66.185	-40937.045	0.200	2709418.323325	-30002.166800	177-14-34	135-25-04	63.090
68-107K	-150073.851	-64.313	-40934.010	6.079	2632588.985130	-912298.940229	113-03-44	115-49-10	3.308
68-7K	-150075.147	-0.545	-40930.966	15.321	22307.376470	-2299301.327187	86-29-58	153-26-14	12.300
68-21	-150074.396	0.872	-40918.689	14.275	-35681.096808	-2142312.002900	86-32-04	180-02-06	2.002
68-20K	-150074.275	0.791	-40916.691	12.935	-32365.102581	-1941210.747125	86-29-40	179-57-36	10.958
68-19	-150073.605	2.345	-40905.754	38.413	-95923.993130	-5764777.388865	86-30-41	180-01-01	27.527
68-18K	-150071.930	2.580	-40878.278	42.162	-105465.957240	-6327332.712660	86-28-25	179-57-44	14.714
68-6	-150071.025	4.071	-40863.592	17.537	-166355.683032	-2631795.565425	42-00-12	135-31-47	4.260
68-5	-150067.859	9.932	-40860.741	2.477	-405828.879612	-371718.086743	356-50-10	134-49-58	6.776
68-102	-150061.093	45.829	-40861.115	-2.473	-1872624.039335	371101.082989	356-55-27	180-05-17	39.119
68-16	-150022.030	53.594	-40863.214	-2.868	-2190023.091116	430263.182040	356-58-14	180-02-47	14.551
68-4	-150007.499	17.387	-40863.983	-3.936	-710502.072421	590429.516064	312-02-39	135-04-25	4.265
68-3	-150004.643	2.558	-40867.150	-10.151	-104538.169700	1522697.131093	267-33-24	135-30-45	6.990
68-101	-150004.941	-0.618	-40874.134	-13.750	25260.214812	2062567.938750	267-17-32	179-44-08	6.774
68-14	-150005.261	-1.601	-40880.900	-34.554	65450.320900	5183281.788594	267-21-38	180-04-06	27.818
68-12	-150006.542	-1.782	-40908.688	-38.684	72899.282016	5802853.070728	267-22-03	180-00-25	10.908
68-9	-150007.043	-1.124	-40919.584	-25.522	45993.612416	3828479.751446	267-33-39	180-11-36	14.639
合計				倍面積 面積	9791.620204 4895.81	-9791.620204 4895.81			274.250

地番	筆種別	面積	坪数
68-1	筆界	185.97	56.25
68-2	筆界	202.36	61.21
68-3	筆界	290.37	87.83
68-5	筆界	1755.89	531.15
68-6	筆界	95.44	28.87
68-7	筆界	269.64	81.56
68-8	筆界	22.58	6.83
68-9	筆界	87.71	26.53
68-10	筆界	759.44	229.73
68-11	筆界	329.08	99.54
68-13	筆界	493.60	149.31
68-14	筆界	72.90	22.05
68-15	筆界	330.75	100.05
	筆合	4895.73	1480.91

面積 (座標法) 計算書

地番 = 68-1
測点名

	[1] X (i)	[2] X (i+1)-X (i-1)	[3] Y (i)	[4] Y (i+1)-Y (i-1)	[2]*[3]	[1]*[4]	方向角	夾角	距離
68-56K	-150017.800	11.604	-40919.088	17.085	-474825.097152	-2563054.113000	357-21-36	90-07-06	10.768
68-9	-150007.043	10.134	-40919.584	-15.122	-414679.064256	2268406.504246	267-33-39	90-12-03	14.639
68-100	-150007.666	-3.791	-40934.210	-17.461	155181.590110	2619283.856026	221-49-30	134-15-51	4.251
68-1K	-150010.834	-10.981	-40937.045	-2.459	449529.691145	368876.640806	177-14-41	135-25-11	7.822
68-55K	-150018.647	-6.966	-40936.669	17.957	285164.836254	-2693884.844179	87-14-30	89-59-49	17.601
合計				倍面積 面積	371.956101 185.97	-371.956101 185.97			55.081

面積 (座標法) 計算書

地番 = 68-2
測点名

	[1] X (i)	[2] X (i+1)-X (i-1)	[3] Y (i)	[4] Y (i+1)-Y (i-1)	[2]*[3]	[1]*[4]	方向角	夾角	距離
65-66K	-150006.862	41.545	-40915.641	-5.768	-1699840.305345	865239.580016	267-22-18	89-52-34	3.947
68-9	-150007.043	-22.553	-40919.584	-2.911	922859.377952	436670.502173	177-21-32	89-59-14	22.396
68-29	-150029.415	-22.463	-40918.552	-0.948	919153.433576	142227.885420	267-22-07	270-00-35	1.982
68-28K	-150029.506	-19.528	-40920.532	-1.182	799096.148896	177334.876092	177-38-56	90-16-49	19.453
68-27K	-150048.943	-19.082	-40919.734	6.716	780830.364188	-1007728.701188	86-34-02	88-55-06	5.929
38-65K	-150048.588	42.081	-40913.816	4.093	-1721694.291096	-614148.870684	357-29-44	90-55-42	41.766
合計				倍面積 面積	404.728171 202.36	-404.728171 202.36			95.473

面積 (座標法) 計算書

地番 = 68-3
測点名

	[1] X (i)	[2] X (i+1)-X (i-1)	[3] Y (i)	[4] Y (i+1)-Y (i-1)	[2]*[3]	[1]*[4]	方向角	夾角	距離
38-65K	-150048.588	-41.310	-40913.816	8.774	1690149.738960	-1316526.311112	86-34-27	89-04-43	6.961
68-31K	-150048.172	42.046	-40906.867	5.128	-1719970.129882	-769447.026016	357-29-43	90-55-16	41.670
68-12	-150006.542	41.310	-40908.688	-8.774	-1689937.901280	1316157.399508	267-21-54	89-52-11	6.960
65-66K	-150006.862	-42.046	-40915.641	-5.128	1720339.041486	769235.188336	177-29-44	90-07-50	41.766
合計				倍面積 面積	580.749284 290.37	-580.749284 290.37			97.357

面積 (座標法) 計算書

地番 = 68-5
測点名

	[1] X (i)	[2] X (i+1)-X (i-1)	[3] Y (i)	[4] Y (i+1)-Y (i-1)	[2]*[3]	[1]*[4]	方向角	夾角	距離
68-12	-150006.542	-67.837	-40908.688	-13.865	2775122.667856	2079840.704830	177-29-42	90-07-59	67.127
68-19	-150073.605	-65.388	-40905.754	30.410	2674745.442552	-4563738.328050	86-30-41	89-00-59	27.527
68-18K	-150071.930	50.800	-40878.278	25.532	-2076616.522400	-3831636.516760	357-44-02	91-13-21	49.163
68-35K	-150022.805	57.997	-40880.222	-2.287	-2370930.235334	343102.155035	357-47-10	180-03-08	8.879
68-33K	-150013.933	8.365	-40880.565	-11.326	-341965.926225	1699057.805158	267-21-25	89-34-15	10.995
68-32K	-150014.440	8.165	-40891.548	-11.324	-333879.489420	1698763.518560	357-44-53	270-23-28	8.679
68-13K	-150005.768	7.898	-40891.889	-17.140	-322964.139322	2571098.863520	267-21-43	89-36-50	16.817
合計				倍面積 面積	3511.797707 1755.89	-3511.797707 1755.89			189.187

面積 (座標法) 計算書

地番 = 68-6
測点名

	[1] X (i)	[2] X (i+1)-X (i-1)	[3] Y (i)	[4] Y (i+1)-Y (i-1)	[2]*[3]	[1]*[4]	方向角	夾角	距離
68-33K	-150013.933	9.179	-40880.565	10.648	-375242.706135	-1597348.358584	357-47-16	90-25-51	8.678
68-14	-150005.261	8.165	-40880.900	-11.324	-333792.548500	1698659.575564	267-21-30	89-34-14	11.001
68-13K	-150005.768	-9.179	-40891.889	-10.648	375346.649131	1597261.417664	177-44-53	90-23-23	8.679
68-32K	-150014.440	-8.165	-40891.548	11.324	333879.489420	-1698763.518560	87-21-25	89-36-32	10.995
合計				倍面積 面積	190.883916 95.44	-190.883916 95.44			39.353

面積 (座標法) 計算書

地番 = 68-7
測点名

	[1] X (i)	[2] X (i+1)-X (i-1)	[3] Y (i)	[4] Y (i+1)-Y (i-1)	[2]*[3]	[1]*[4]	方向角	夾角	距離
68-15K	-150020.704	13.980	-40863.284	16.290	-571268.710320	-2443837.268160	356-58-12	89-34-55	13.223
68-4	-150007.499	16.061	-40863.983	-3.866	-656316.430963	579928.991134	312-02-39	135-04-27	4.265
68-3	-150004.643	2.558	-40867.150	-10.151	-104538.169700	1522697.131093	267-33-24	135-30-45	6.990
68-101	-150004.941	-0.618	-40874.134	-13.750	25260.214812	2062567.938750	267-17-32	179-44-08	6.774
68-14	-150005.261	-16.538	-40880.900	-6.139	676088.324200	920882.297279	177-47-10	90-29-38	16.230
68-34K	-150021.479	-15.443	-40880.273	17.616	631314.055939	-2642778.374064	87-23-17	89-36-07	17.007
合計				倍面積 面積	539.283968 269.64	-539.283968 269.64			64.489

面積 (座標法) 計算書

地番 = 68-8
測点名

	[1] X (i)	[2] X (i+1)-X (i-1)	[3] Y (i)	[4] Y (i+1)-Y (i-1)	[2]*[3]	[1]*[4]	方向角	夾角	距離
68-34K	-150021.479	-2.101	-40880.273	-16.938	85889.453573	2541063.811302	177-47-51	90-24-34	1.327
68-35K	-150022.805	-0.551	-40880.222	17.059	22525.002322	-2559239.030495	87-23-28	89-35-37	17.026
68-16	-150022.030	2.101	-40863.214	16.938	-85853.612614	-2541073.144140	356-58-41	89-35-13	1.328
68-15K	-150020.704	0.551	-40863.284	-17.059	-22515.669484	2559203.189536	267-23-17	90-24-36	17.007
合計				倍面積 面積	45.173797 22.58	-45.173797 22.58			36.688

面積 (座標法) 計算書

地番 = 68-9
測点名

	[1] X (i)	[2] X (i+1)-X (i-1)	[3] Y (i)	[4] Y (i+1)-Y (i-1)	[2]*[3]	[1]*[4]	方向角	夾角	距離
68-17K	-150027.164	5.912	-40862.938	16.805	-241581.689456	-2521206.491020	356-55-22	89-31-50	5.141
68-16	-150022.030	4.359	-40863.214	-17.284	-178122.749826	2592980.766520	267-23-28	90-28-06	17.026
68-35K	-150022.805	-5.912	-40880.222	-16.805	241683.872464	2521133.238025	177-44-13	90-20-45	5.141
68-36K	-150027.942	-4.359	-40880.019	17.284	178196.002821	-2593082.949528	87-23-32	89-39-19	17.099
合計				倍面積 面積	175.436003 87.71	-175.436003 87.71			44.407

面積 (座標法) 計算書

地番 = 68-10
測点名

	[1] X (i)	[2] X (i+1)-X (i-1)	[3] Y (i)	[4] Y (i+1)-Y (i-1)	[2]*[3]	[1]*[4]	方向角	夾角	距離
68-36K	-150027.942	-44.766	-40880.019	-15.340	1830034.930554	2301428.630280	177-44-01	90-20-29	44.022
68-18K	-150071.930	-43.083	-40878.278	16.427	1761158.851074	-2465231.594110	86-28-25	88-44-24	14.714
68-6	-150071.025	4.071	-40863.592	17.537	-166355.683032	-2631795.565425	42-00-12	135-31-47	4.260
68-5	-150067.859	9.932	-40860.741	2.477	-405828.879612	-371718.086743	356-50-10	134-49-58	6.776
68-102	-150061.093	40.695	-40861.115	-2.197	-1662843.074925	329684.221321	356-55-28	180-05-18	33.978
68-17K	-150027.164	33.151	-40862.938	-18.904	-1354647.257638	2836113.508256	267-23-32	90-28-04	17.099
合計				倍面積 面積	1518.886421 759.44	-1518.886421 759.44			120.849

面積 (座標法) 計算書

地番 = 68-11
測点名

	[1] X (i)	[2] X (i+1)-X (i-1)	[3] Y (i)	[4] Y (i+1)-Y (i-1)	[2]*[3]	[1]*[4]	方向角	夾角	距離
68-27K	-150048.943	-26.224	-40919.734	-11.822	1073079.104416	1773878.604146	177-38-56	91-04-41	25.474
68-21	-150074.396	-24.662	-40918.689	13.980	1009136.708118	-2098040.056080	86-30-02	88-51-06	12.959
68-19	-150073.605	26.224	-40905.754	11.822	-1072712.492896	-1774170.158310	357-29-39	90-59-37	25.457
68-31K	-150048.172	24.662	-40906.867	-13.980	-1008845.153954	2097673.444560	266-34-15	89-04-36	12.890
合計				倍面積 面積	658.165684 329.08	-658.165684 329.08			76.780

面積 (座標法) 計算書

地番 = 68-13
測点名

	[1] X (i)	[2] X (i+1)-X (i-1)	[3] Y (i)	[4] Y (i+1)-Y (i-1)	[2]*[3]	[1]*[4]	方向角	夾角	距離
68-53K	-150043.052	-31.544	-40935.493	-14.004	1291269.191192	2101202.900208	177-14-36	89-59-51	30.835
68-107K	-150073.851	-32.095	-40934.010	4.527	1313777.050950	-679384.323477	113-03-44	115-49-08	3.308
68-7K	-150075.147	-0.545	-40930.966	15.321	22307.376470	-2299301.327187	86-29-58	153-26-14	12.300
68-21	-150074.396	32.840	-40918.689	10.960	-1343769.746760	-1644815.380160	357-38-59	91-09-01	32.116
68-58K	-150042.307	31.344	-40920.006	-16.804	-1282596.668064	2521310.926828	267-14-45	89-35-46	15.505
合計				倍面積 面積	987.203788 493.60	-987.203788 493.60			94.064

面積 (座標法) 計算書

地番 = 68-14
測点名

	[1] X (i)	[2] X (i+1)-X (i-1)	[3] Y (i)	[4] Y (i+1)-Y (i-1)	[2]*[3]	[1]*[4]	方向角	夾角	距離
68-54K	-150038.361	-5.439	-40935.719	-15.294	222649.375641	2294686.693134	177-14-30	90-00-03	4.696
68-53K	-150043.052	-3.946	-40935.493	15.713	161531.455378	-2357626.476076	87-14-45	90-00-15	15.505
68-58K	-150042.307	5.439	-40920.006	15.294	-222563.912634	-2294747.043258	357-38-44	90-23-59	4.698
68-57K	-150037.613	3.946	-40920.199	-15.713	-161471.105254	2357541.013069	267-14-27	89-35-43	15.538
合計				倍面積 面積	145.813131 72.90	-145.813131 72.90			40.437

面積 (座標法) 計算書

地番 = 68-15

測点名	[1] X (i)	[2] X (i+1)-X (i-1)	[3] Y (i)	[4] Y (i+1)-Y (i-1)	[2] * [3]	[1] * [4]	方向角	夾 角	距 離
68-55K	-150018.647	-20.561	-40936.669	-16.631	841698.851309	2494960.118257	177-14-28	89-59-58	19.737
68-54K	-150038.361	-18.966	-40935.719	16.470	776386.846554	-2471131.805670	87-14-27	89-59-59	15.538
68-57K	-150037.613	8.855	-40920.199	15.187	-362348.362145	-2278621.228631	357-38-52	90-24-25	8.114
68-28K	-150029.506	8.198	-40920.532	1.647	-335466.521336	-247098.596382	87-22-07	269-43-15	1.982
68-29	-150029.415	11.706	-40918.552	1.444	-478992.569712	-216642.475260	357-21-28	89-59-21	11.627
68-56K	-150017.800	10.768	-40919.088	-18.117	-440616.739584	2717872.482600	267-14-30	89-53-02	17.601
合計					661.505086	-661.505086			74.599
				倍面積 面積	330.75	330.75			