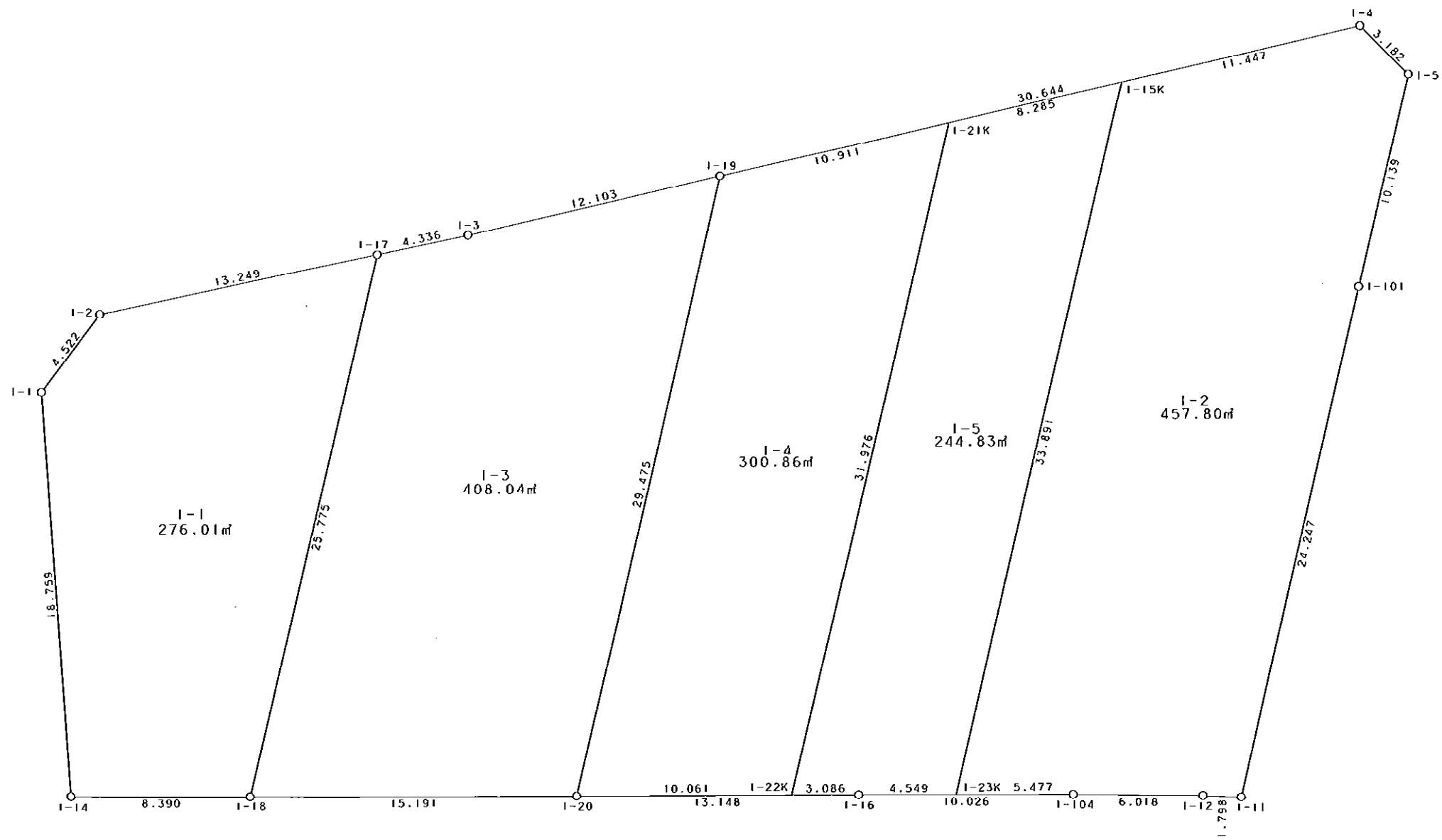


西部第4地区土地区画整理事業 出来形確認測量（原子図）

1街区



S - 1 / 250



凡 例

記号	名称
⊙	地区界点
○	街区点
○	画地点(折れ点)
	画地点(直線中)

面積 (座標法) 計算書

地番 = 1街区  
測点名

	[1] X (i)	[2] X (i+1)-X (i-1)	[3] Y (i)	[4] Y (i+1)-Y (i-1)	[2] * [3]	[1] * [4]	方向角	夾角	距離
1-2	-149537.838	-9.729	-41449.122	-13.840	403258.507938	2069603.677920	203-51-21	138-49-31	4.522
1-1	-149541.974	-22.056	-41450.951	3.720	914242.175256	-556296.143280	162-47-41	138-56-20	18.759
1-14	-149559.894	-16.046	-41445.402	13.727	665032.920492	-2053008.664938	77-05-36	94-17-55	8.390
1-18	-149558.020	5.294	-41437.224	22.979	-219368.663856	-3436693.741580	76-59-21	179-53-45	15.191
1-20	-149554.600	6.386	-41422.423	27.610	-264523.593278	-4129202.506000	76-57-45	179-58-24	13.148
1-16	-149551.634	5.196	-41409.614	22.584	-215164.354344	-3377474.102256	77-08-56	180-11-11	10.026
1-104	-149549.404	3.511	-41399.839	15.655	-145354.834729	-2341195.919620	77-42-35	180-33-39	6.018
1-12	-149548.123	1.613	-41393.959	7.647	-66768.455867	-1143594.496581	79-21-32	181-38-57	1.798
1-11	-149547.791	24.579	-41392.192	1.870	-1017378.687168	-279654.369170	0-14-36	100-53-04	24.247
1-101	-149523.544	34.386	-41392.089	0.160	-1423308.372354	-23923.767040	0-19-20	180-04-44	10.139
1-5	-149513.405	11.818	-41392.032	-2.646	-489171.034176	395612.469630	301-50-49	121-31-29	3.182
1-4	-149511.726	-11.720	-41394.735	-30.262	485146.294200	4524523.852212	244-04-17	122-13-28	30.644
1-19	-149525.125	-18.686	-41422.294	-38.446	774016.985684	5748642.955750	244-05-51	180-01-34	12.103
1-3	-149530.412	-7.120	-41433.181	-14.817	295004.248720	2215592.114604	244-59-42	180-53-51	4.336
1-17	-149532.245	-7.426	-41437.111	-15.941	307711.986286	2383693.517545	245-01-50	180-02-08	13.249
合計					3375.122804	-3375.122804			175.752
				倍面積 面積	1687.56	1687.56			

地番	筆種別	面積	坪数
1-1	筆界	276.01	83.49
1-2	筆界	457.80	138.48
1-3	筆界	408.04	123.43
1-4	筆界	300.86	91.01
1-5	筆界	244.83	74.06
	筆合計	1687.54	510.47

面積 (座標法) 計算書

地番 = 1-1  
測点名

	[1] X (i)	[2] X (i+1)-X (i-1)	[3] Y (i)	[4] Y (i+1)-Y (i-1)	[2]*[3]	[1]*[4]	方向角	夾角	距離
1-2	-149537.838	-9.729	-41449.122	-13.840	403258.507938	2069603.677920	203-51-21	138-49-31	4.522
1-1	-149541.974	-22.056	-41450.951	3.720	914242.175256	-556296.143280	162-47-41	138-56-20	18.759
1-14	-149559.894	-16.046	-41445.402	13.727	665032.920492	-2053008.664938	77-05-36	94-17-55	8.390
1-18	-149558.020	27.649	-41437.224	8.291	-1145697.806376	-1239985.543820	0-15-04	103-09-28	25.775
1-17	-149532.245	20.182	-41437.111	-11.898	-836283.774202	1779134.651010	245-01-50	64-46-46	13.249
合計					552.023108	-552.023108			70.695
				倍面積 面積	276.01	276.01			

面積 (座標法) 計算書

地番 = 1-2  
測点名

	[1] X (i)	[2] X (i+1)-X (i-1)	[3] Y (i)	[4] Y (i+1)-Y (i-1)	[2]*[3]	[1]*[4]	方向角	夾角	距離
1-23K	-149550.622	-32.673	-41405.179	5.191	1352831.413467	-776317.278802	77-09-04	76-53-57	5.477
1-104	-149549.404	2.499	-41399.839	11.220	-103458.197661	-1677944.312880	77-42-35	180-33-31	6.018
1-12	-149548.123	1.613	-41393.959	7.647	-66768.455867	-1143594.496581	79-21-32	181-38-57	1.798
1-11	-149547.791	24.579	-41392.192	1.870	-1017378.687168	-279654.369170	0-14-36	100-53-04	24.247
1-101	-149523.544	34.386	-41392.089	0.160	-1423308.372354	-23923.767040	0-19-20	180-04-44	10.139
1-5	-149513.405	11.818	-41392.032	-2.646	-489171.034176	395612.469630	301-50-49	121-31-29	3.182
1-4	-149511.726	-3.326	-41394.735	-12.998	137678.888610	1943353.414548	244-04-22	122-13-33	11.447
1-15K	-149516.731	-38.896	-41405.030	-10.444	1610490.046880	1561552.738564	180-15-07	116-10-45	33.891
合計					915.601731	-915.601731			96.199
				倍面積 面積	457.80	457.80			

面積 (座標法) 計算書

地番 = 1-3  
測点名

	[1] X (i)	[2] X (i+1)-X (i-1)	[3] Y (i)	[4] Y (i+1)-Y (i-1)	[2]*[3]	[1]*[4]	方向角	夾角	距離
1-17	-149532.245	-27.608	-41437.111	-4.043	1143995.760488	604558.866535	180-15-04	115-15-22	25.775
1-18	-149558.020	-22.355	-41437.224	14.688	926329.142520	-2196708.197760	76-59-21	76-44-17	15.191
1-20	-149554.600	32.895	-41422.423	14.930	-1362590.604585	-2232850.178000	0-15-03	103-15-42	29.475
1-19	-149525.125	24.188	-41422.294	-10.758	-1001922.447272	1608591.294750	244-05-51	63-50-48	12.103
1-3	-149530.412	-7.120	-41433.181	-14.817	295004.248720	2215592.114604	244-59-42	180-53-51	4.336
合計					816.099871	-816.099871			86.880
				倍面積 面積	408.04	408.04			

面積 (座標法) 計算書

地番 = 1-4  
測点名

	[1] X (i)	[2] X (i+1)-X (i-1)	[3] Y (i)	[4] Y (i+1)-Y (i-1)	[2]*[3]	[1]*[4]	方向角	夾角	距離
1-21K	-149520.354	27.205	-41412.481	-9.673	-1126626.545605	1446310.384242	244-04-17	63-49-14	10.911
1-19	-149525.125	-34.246	-41422.294	-9.942	1418547.880324	1486578.792750	180-15-03	116-10-46	29.475
1-20	-149554.600	-27.205	-41422.423	9.673	1126897.017715	-1446641.645800	76-57-40	76-42-37	10.061
1-22K	-149552.330	34.246	-41412.621	9.942	-1418216.618766	-1486849.264860	0-15-03	103-17-23	31.976
合計					601.733668	-601.733668			82.423
				倍面積 面積	300.86	300.86			

### 面積（座標法）計算書

地番 = 1-5  
測点名

	[1] X (i)	[2] X (i+1)-X (i-1)	[3] Y (i)	[4] Y (i+1)-Y (i-1)	[2] * [3]	[1] * [4]	方向角	夾角	距離
1-15K	-149516.731	30.268	-41405.030	-7.302	-1253247.448040	1091771.169762	244-04-08	63-49-01	8.285
1-21K	-149520.354	-35.599	-41412.481	-7.591	1474242.911119	1135009.007214	180-15-03	116-10-55	31.976
1-22K	-149552.330	-31.280	-41412.621	2.867	1295386.784880	-428766.530110	76-58-04	76-43-01	3.086
1-16	-149551.634	1.708	-41409.614	7.442	-70727.620712	-1112963.260228	77-08-46	180-10-42	4.549
1-23K	-149550.622	34.903	-41405.179	4.584	-1445164.962637	-685540.051248	0-15-07	103-06-21	33.891
合計				倍面積 面積	489.664610 244.83	-489.664610 244.83			81.787