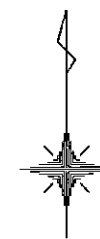
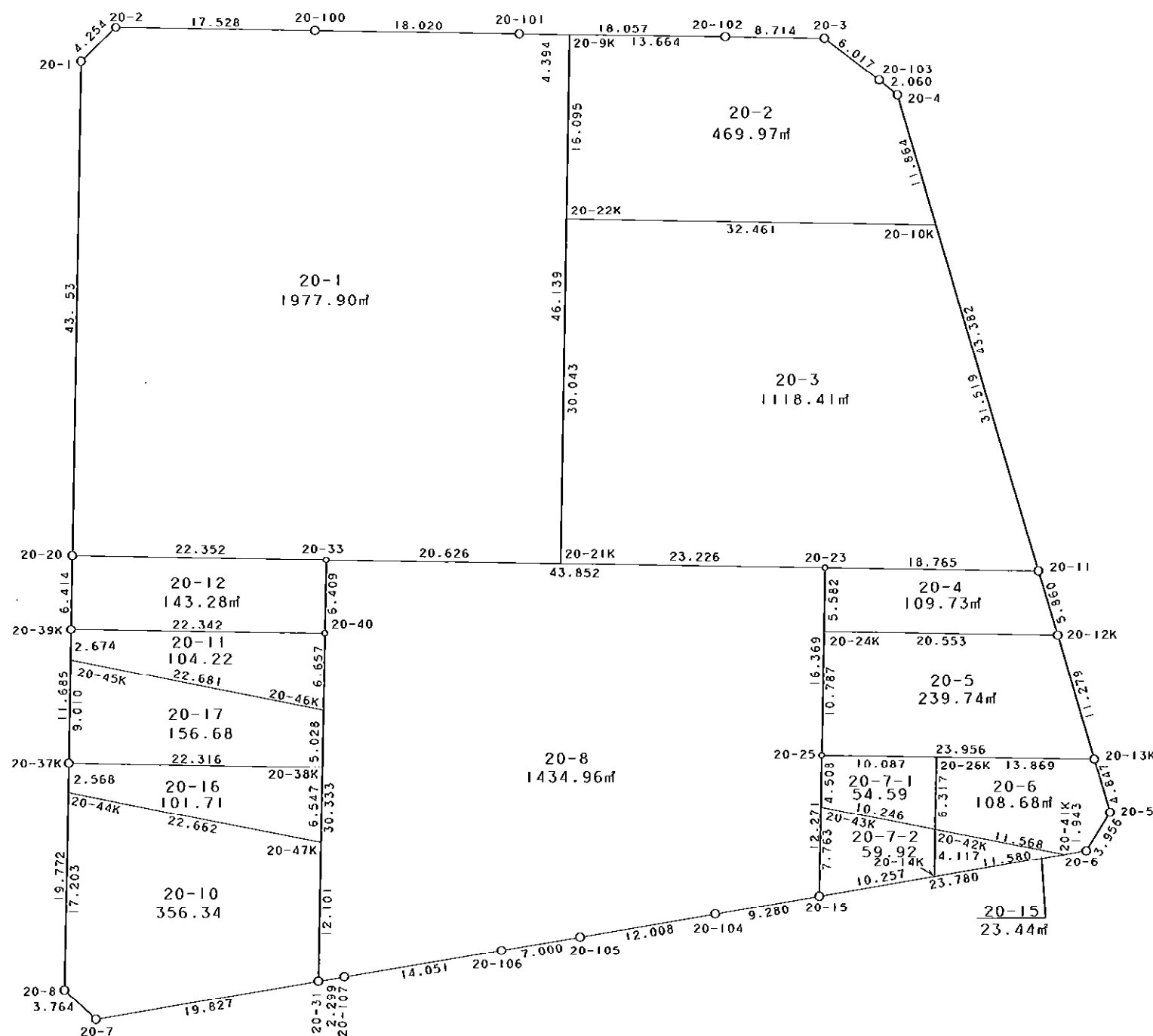


西部第4地区土地区画整理事業 出来形確認測量 (原子図)

20街区



S = 1 / 500



凡 例

記号	名称
⊙	地区界点
○	街区点
○	画地点 (折れ点)
┆	画地点 (直線中)

面積 (座標法) 計算書

地番 = 20街区
測点名

	[1] X (i)	[2] X (i+1)-X (i-1)	[3] Y (i)	[4] Y (i+1)-Y (i-1)	[2] * [3]	[1] * [4]	方向角	夾角	距離
20-2	-149652.140	-2.631	-41069.788	-20.590	108054.612228	3081337.562600	226-05-43	135-03-09	4.254
20-1	-149655.090	-46.096	-41072.853	-3.827	1893294.231888	572730.029430	181-00-42	134-54-59	43.153
20-20	-149698.236	-49.559	-41073.615	-0.879	2035567.285785	131584.749444	181-02-43	180-02-01	6.414
20-39K	-149704.649	-18.096	-41073.732	-0.310	743270.254272	46408.441190	180-56-47	179-54-04	11.685
20-37K	-149716.332	-31.451	-41073.925	-0.579	1291816.015175	86685.756228	181-07-07	180-10-20	19.772
20-8	-149736.100	-22.290	-41074.311	2.408	915546.392190	-360564.528800	132-04-15	130-57-08	3.764
20-7	-149738.622	0.746	-41071.517	22.350	-30639.351682	-3346658.201700	80-30-47	128-26-32	19.827
20-31	-149735.354	3.652	-41051.961	21.823	-149921.761572	-3267674.630342	80-23-10	179-52-23	2.299
20-107	-149734.970	2.655	-41049.694	16.133	-108986.937570	-2415674.271010	80-41-55	180-18-45	14.051
20-106	-149732.699	3.434	-41035.828	20.769	-140917.033352	-3109798.425531	80-26-12	179-44-17	7.000
20-105	-149731.536	3.149	-41028.925	18.746	-129200.084825	-2806867.373856	80-28-49	180-02-37	12.008
20-104	-149729.550	3.530	-41017.082	20.994	-144790.299460	-3143422.172700	80-25-23	179-56-34	9.280
20-15	-149728.006	5.432	-41007.931	32.611	-222755.081192	-4882780.003666	80-35-24	180-10-01	23.780
20-6	-149724.118	7.245	-40984.471	25.553	-296932.492395	-3825900.387254	31-56-33	131-21-09	3.956
20-5K	-149720.761	8.002	-40982.378	0.708	-327940.988756	-106002.298788	343-23-49	131-27-16	4.847
20-13K	-149716.116	15.458	-40983.763	-4.593	-633527.008454	687646.120788	343-28-32	180-04-43	11.279
20-12K	-149705.303	16.425	-40986.971	-4.895	-673210.998675	732807.458185	343-16-08	179-47-36	5.860
20-11	-149699.691	47.182	-40988.658	-14.095	-1933926.861756	2110017.144645	343-22-50	180-06-42	43.382
20-4	-149658.121	42.848	-41001.066	-14.024	-1756813.675968	2098805.488904	308-20-18	144-57-28	2.060
20-103	-149656.843	4.911	-41002.682	-6.412	-201364.171302	959599.677316	307-08-39	178-48-21	6.017
20-3	-149653.210	3.794	-41007.478	-13.509	-155582.371532	2021665.213890	271-03-31	143-54-52	8.714
20-102	-149653.049	0.437	-41016.191	-26.768	-17924.075467	4005912.815632	270-52-33	179-49-02	18.057
20-101	-149652.773	0.590	-41034.246	-36.072	-24210.205140	5398274.827656	270-59-54	180-07-21	18.020
20-100	-149652.459	0.633	-41052.263	-35.542	-25986.082479	5318947.697778	271-02-34	180-02-40	17.528
合計				倍面積 面積	12919.309961 6459.65	-12919.309961 6459.65			317.007

地番	筆種別	面積	坪数
20-1	筆界	1977.90	598.31
20-2	筆界	469.97	142.16
20-3	筆界	1118.41	338.32
20-4	筆界	109.73	33.19
20-5	筆界	239.74	72.52
20-6	筆界	108.68	32.87
20-7-1	筆界	54.59	16.51
20-7-2	筆界	59.92	18.12
20-8	筆界	1434.96	434.07
20-10	筆界	356.34	107.79
20-11	筆界	104.22	31.52
20-12	筆界	143.28	43.34
20-15	筆界	23.44	7.09
20-16	筆界	101.71	30.76
20-17	筆界	156.68	47.39
	筆合	6459.57	1953.96

面積 (座標法) 計算書

地番 = 20-1
測点名

	[1] X (i)	[2] X (i+1)-X (i-1)	[3] Y (i)	[4] Y (i+1)-Y (i-1)	[2] * [3]	[1] * [4]	方向角	夾角	距離
20-9K	-149652.840	46.199	-41029.853	-3.603	-1895538.178747	539199.182520	270-52-26	89-53-34	4.394
20-101	-149652.773	0.381	-41034.246	-22.410	-15634.047726	3353718.642930	270-59-54	180-07-28	18.020
20-100	-149652.459	0.633	-41052.263	-35.542	-25986.082479	5318947.697778	271-02-34	180-02-40	17.528
20-2	-149652.140	-2.631	-41069.788	-20.590	108054.612228	3081337.562600	226-05-43	135-03-09	4.254
20-1	-149655.090	-46.096	-41072.853	-3.827	1893294.231888	572730.029430	181-00-42	134-54-59	43.153
20-20	-149698.236	-43.528	-41073.615	21.587	1787852.313720	-3231535.820532	90-58-45	89-58-03	22.352
20-33	-149698.618	-0.736	-41051.266	42.972	30213.731776	-6432849.012696	90-59-00	180-00-15	20.626
20-21K	-149698.972	45.778	-41030.643	21.413	-1878300.775254	-3205504.087436	0-58-52	89-59-52	46.139
合計				倍面積 面積	3955.805406 1977.90	-3955.805406 1977.90			176.466

面積 (座標法) 計算書

地番 = 20-2
測点名

	[1] X (i)	[2] X (i+1)-X (i-1)	[3] Y (i)	[4] Y (i+1)-Y (i-1)	[2] * [3]	[1] * [4]	方向角	夾角	距離
20-10K	-149669.489	10.812	-40997.673	29.063	-443266.840476	-4349844.358807	343-22-52	72-23-59	11.864
20-4	-149658.121	12.646	-41001.066	-5.009	-518499.480636	749637.528089	308-20-18	144-57-26	2.060
20-103	-149656.843	4.911	-41002.682	-6.412	-201364.171302	959599.677316	307-08-39	178-48-21	6.017
20-3	-149653.210	3.794	-41007.478	-13.509	-155582.371532	2021665.213890	271-03-31	143-54-52	8.714
20-102	-149653.049	0.370	-41016.191	-22.375	-15175.990670	3348486.971375	270-52-35	179-49-04	13.664
20-9K	-149652.840	-15.884	-41029.853	-13.938	651718.185052	2085861.283920	180-58-57	90-06-22	16.095
20-22K	-149668.933	-16.649	-41030.129	32.180	683110.617721	-4816346.263940	90-58-53	89-59-56	32.461
合計				倍面積 面積	939.948157 469.97	-939.948157 469.97			90.875

面積 (座標法) 計算書

地番 = 20-3
測点名

	[1] X (i)	[2] X (i+1)-X (i-1)	[3] Y (i)	[4] Y (i+1)-Y (i-1)	[2] * [3]	[1] * [4]	方向角	夾角	距離
20-22K	-149668.933	-29.483	-41030.129	-32.970	1209691.293307	4934584.721010	180-58-49	89-59-56	30.043
20-21K	-149698.972	-30.438	-41030.643	22.709	1248890.711634	-3399513.955148	90-59-04	90-00-15	23.226
20-23	-149699.371	-0.719	-41007.420	41.985	29484.334980	-6285128.091435	90-58-38	179-59-34	18.765
20-11	-149699.691	29.882	-40988.658	9.747	-1224823.078356	-1459122.888177	343-22-49	72-24-11	31.519
20-10K	-149669.489	30.758	-40997.673	-41.471	-1261006.426134	6206943.378319	270-58-53	107-36-04	32.461
合計				倍面積 面積	2236.835431 1118.41	-2236.835431 1118.41			136.014

面積 (座標法) 計算書

地番 = 20-4
測点名

	[1] X (i)	[2] X (i+1)-X (i-1)	[3] Y (i)	[4] Y (i+1)-Y (i-1)	[2] * [3]	[1] * [4]	方向角	夾角	距離
20-12K	-149705.303	5.261	-40986.971	18.863	-215632.454431	-2823891.130489	343-16-08	72-17-25	5.860
20-11	-149699.691	5.932	-40988.658	-20.449	-243144.719256	3061208.981259	270-58-38	107-42-30	18.765
20-23	-149699.371	-5.261	-41007.420	-18.863	215740.036620	2823779.235173	181-02-12	90-03-34	5.582
20-24K	-149704.952	-5.932	-41007.521	20.449	243256.614572	-3061316.563448	90-58-43	89-56-31	20.553
合計				倍面積 面積	219.477505 109.73	-219.477505 109.73			50.760

面積 (座標法) 計算書

地番 = 20-5
測点名

	[1] X (i)	[2] X (i+1)-X (i-1)	[3] Y (i)	[4] Y (i+1)-Y (i-1)	[2] * [3]	[1] * [4]	方向角	夾角	距離
20-24K	-149704.952	-10.434	-41007.521	-20.745	427872.474114	3105629.229240	181-02-09	90-03-26	10.787
20-25	-149715.737	-11.164	-41007.716	23.758	457810.141424	-3556946.479646	90-54-23	89-52-14	23.956
20-13K	-149716.116	10.434	-40983.763	20.745	-427624.583142	-3105860.826420	343-28-32	72-34-09	11.279
20-12K	-149705.303	11.164	-40986.971	-23.758	-457578.544244	3556698.588674	270-58-43	107-30-11	20.553
合計				倍面積 面積	479.488152 239.74	-479.488152 239.74			66.575

面積 (座標法) 計算書

地番 = 20-6
測点名

	[1] X (i)	[2] X (i+1)-X (i-1)	[3] Y (i)	[4] Y (i+1)-Y (i-1)	[2] * [3]	[1] * [4]	方向角	夾角	距離
20-42K	-149722.213	-8.539	-40997.740	11.242	350079.701860	-1683177.118546	101-04-47	100-04-55	11.568
20-41K	-149724.436	-1.905	-40986.388	13.269	78079.069140	-1986693.541284	80-34-53	159-30-06	1.943
20-6	-149724.118	3.675	-40984.471	4.010	-150617.930925	-600393.713180	31-56-33	131-21-40	3.956
20-5K	-149720.761	8.002	-40982.378	0.708	-327940.988756	-106002.298788	343-23-49	131-27-16	4.847
20-13K	-149716.116	4.864	-40983.763	-15.252	-199345.023232	2283470.201232	270-54-17	107-30-28	13.869
20-26K	-149715.897	-6.097	-40997.630	-13.977	249962.550110	2092579.092369	180-59-52	90-05-35	6.317
合計				倍面積 面積	217.378197 108.68	-217.378197 108.68			42.500

面積 (座標法) 計算書

地番 = 20-7-1
測点名

	[1] X (i)	[2] X (i+1)-X (i-1)	[3] Y (i)	[4] Y (i+1)-Y (i-1)	[2] * [3]	[1] * [4]	方向角	夾角	距離
20-25	-149715.737	-4.347	-41007.716	-10.165	178260.541452	1521860.466605	181-00-15	90-05-43	4.508
20-43K	-149720.244	-6.476	-41007.795	9.976	265566.480420	-1493609.154144	101-04-47	100-04-32	10.246
20-42K	-149722.213	4.347	-40997.740	10.165	-178217.175780	-1521926.295145	0-59-52	79-55-05	6.317
20-26K	-149715.897	6.476	-40997.630	-9.976	-265500.651880	1493565.788472	270-54-32	89-54-40	10.087
合計				倍面積 面積	109.194212 54.59	-109.194212 54.59			31.158

面積 (座標法) 計算書

地番 = 20-7-2

測点名	[1] X (i)	[2] X (i+1)-X (i-1)	[3] Y (i)	[4] Y (i+1)-Y (i-1)	[2] * [3]	[1] * [4]	方向角	夾角	距離
20-43K	-149720.244	-5.793	-41007.795	-10.191	237558.156435	1525799.006604	181-00-14	79-55-27	7.763
20-15	-149728.006	-6.085	-41007.931	9.983	249533.260135	-1494734.683898	80-35-24	79-35-10	10.257
20-14K	-149726.329	5.793	-40997.812	10.191	-237500.324916	-1525861.018839	1-00-08	100-24-44	4.117
20-42K	-149722.213	6.085	-40997.740	-9.983	-249471.247900	1494676.852379	281-04-47	100-04-39	10.246
合計				倍面積 面積	119.843754 59.92	-119.843754 59.92			32.383

面積 (座標法) 計算書

地番 = 20-8

測点名	[1] X (i)	[2] X (i+1)-X (i-1)	[3] Y (i)	[4] Y (i+1)-Y (i-1)	[2] * [3]	[1] * [4]	方向角	夾角	距離
20-33	-149698.618	-5.655	-41051.266	-43.973	232144.909230	6582697.329314	181-08-07	90-09-05	6.409
20-40	-149705.026	-36.736	-41051.393	-0.695	1508063.973248	104044.993070	181-04-23	179-56-16	30.333
20-31	-149735.354	-29.944	-41051.961	1.699	1229259.920184	-254400.366446	80-23-10	79-18-47	2.299
20-107	-149734.970	2.655	-41049.694	16.133	-108986.937570	-2415674.271010	80-41-55	180-18-45	14.051
20-106	-149732.699	3.434	-41035.828	20.769	-140917.033352	-3109798.425531	80-26-12	179-44-17	7.000
20-105	-149731.536	3.149	-41028.925	18.746	-129200.084825	-2806867.373856	80-28-49	180-02-37	12.008
20-104	-149729.550	3.530	-41017.082	20.994	-144790.299460	-3143422.172700	80-25-23	179-56-34	9.280
20-15	-149728.006	13.813	-41007.931	9.366	-566442.550903	-1402352.504196	1-00-14	100-34-51	12.271
20-25	-149715.737	28.635	-41007.716	0.511	-1174255.947660	-76504.741607	1-02-10	180-01-56	16.369
20-23	-149699.371	17.119	-41007.420	-43.550	-702006.022980	6519407.607050	270-59-02	89-56-52	43.852
合計				倍面積 面積	2869.925912 1434.96	-2869.925912 1434.96			153.872

面積 (座標法) 計算書

地番 = 20-10

測点名	[1] X (i)	[2] X (i+1)-X (i-1)	[3] Y (i)	[4] Y (i+1)-Y (i-1)	[2] * [3]	[1] * [4]	方向角	夾角	距離
20-44K	-149718.900	-12.845	-41073.975	-22.576	527595.208875	3380053.886400	181-07-09	80-02-23	17.203
20-8	-149736.100	-19.722	-41074.311	2.458	810067.561542	-368051.333800	132-04-15	130-57-06	3.764
20-7	-149738.622	0.746	-41071.517	22.350	-30639.351682	-3346658.201700	80-30-47	128-26-32	19.827
20-31	-149735.354	15.367	-41051.961	19.782	-630845.484687	-2962064.772828	1-04-12	100-33-25	12.101
20-47K	-149723.255	16.454	-41051.735	-22.014	-675465.247690	3296007.735570	281-04-46	100-00-34	22.662
合計				倍面積 面積	712.686358 356.34	-712.686358 356.34			75.557

面積 (座標法) 計算書

地番 = 20-11
測点名

	[1] X (i)	[2] X (i+1)-X (i-1)	[3] Y (i)	[4] Y (i+1)-Y (i-1)	[2]*[3]	[1]*[4]	方向角	夾角	距離
20-39K	-149704.649	-2.297	-41073.732	-22.383	94346.362404	3350839.158567	180-56-34	89-58-33	2.674
20-45K	-149707.323	-7.033	-41073.776	22.214	288871.866608	-3325598.473122	101-04-50	100-08-16	22.681
20-46K	-149711.682	2.297	-41051.518	22.383	-94295.336846	-3350996.578206	1-04-33	79-59-43	6.657
20-40	-149705.026	7.033	-41051.393	-22.214	-288714.446969	3325547.447564	270-58-01	89-53-28	22.342
合計				倍面積 面積	208.445197 104.22	-208.445197 104.22			54.354

面積 (座標法) 計算書

地番 = 20-12
測点名

	[1] X (i)	[2] X (i+1)-X (i-1)	[3] Y (i)	[4] Y (i+1)-Y (i-1)	[2]*[3]	[1]*[4]	方向角	夾角	距離
20-20	-149698.236	-6.031	-41073.615	-22.466	247714.972065	3363120.569976	181-02-43	90-03-58	6.414
20-39K	-149704.649	-6.790	-41073.732	22.222	278890.640280	-3326736.710078	90-58-01	89-55-18	22.342
20-40	-149705.026	6.031	-41051.393	22.466	-247580.951183	-3363273.114116	1-08-07	90-10-06	6.409
20-33	-149698.618	6.790	-41051.266	-22.222	-278738.096140	3326602.689196	270-58-45	89-50-38	22.352
合計				倍面積 面積	286.565022 143.28	-286.565022 143.28			57.517

面積 (座標法) 計算書

地番 = 20-15
測点名

	[1] X (i)	[2] X (i+1)-X (i-1)	[3] Y (i)	[4] Y (i+1)-Y (i-1)	[2]*[3]	[1]*[4]	方向角	夾角	距離
20-42K	-149722.213	-1.893	-40997.740	-11.424	77608.721820	1710426.561312	181-00-08	79-55-21	4.117
20-14K	-149726.329	-2.223	-40997.812	11.352	91138.136076	-1699693.286808	80-35-29	79-35-21	11.580
20-41K	-149724.436	4.116	-40986.388	0.072	-168699.973008	-10780.159392	281-04-47	20-29-18	11.568
合計				倍面積 面積	46.884888 23.44	-46.884888 23.44			27.265

面積 (座標法) 計算書

地番 = 20-16
測点名

	[1] X (i)	[2] X (i+1)-X (i-1)	[3] Y (i)	[4] Y (i+1)-Y (i-1)	[2]*[3]	[1]*[4]	方向角	夾角	距離
20-37K	-149716.332	-2.191	-41073.925	-22.363	89992.969675	3348106.332516	181-06-56	90-08-51	2.568
20-44K	-149718.900	-6.923	-41073.975	22.190	284355.128925	-3322262.391000	101-04-46	99-57-50	22.662
20-47K	-149723.255	2.191	-41051.735	22.363	-89944.351385	-3348261.151565	1-04-35	79-59-49	6.547
20-38K	-149716.709	6.923	-41051.612	-22.190	-284200.309876	3322213.772710	270-58-05	89-53-30	22.316
合計				倍面積 面積	203.437339 101.71	-203.437339 101.71			54.093

面積 (座標法) 計算書

地番 = 20-17
測点名

	[1] X (i)	[2] X (i+1) - X (i-1)	[3] Y (i)	[4] Y (i+1) - Y (i-1)	[2] * [3]	[1] * [4]	方向角	夾 角	距 離
20-45K	-149707.323	-4.650	-41073.776	-22.407	190993.058400	3354491.986461	180-56-51	79-52-01	9.010
20-37K	-149716.332	-9.386	-41073.925	22.164	385519.860050	-3318312.782448	90-58-05	90-01-14	22.316
20-38K	-149716.709	4.650	-41051.612	22.407	-190889.995800	-3354702.298563	1-04-17	90-06-12	5.028
20-46K	-149711.682	9.386	-41051.518	-22.164	-385309.547948	3318209.719848	281-04-50	100-00-33	22.681
合計				倍面積 面積	313.374702 156.68	-313.374702 156.68			59.035