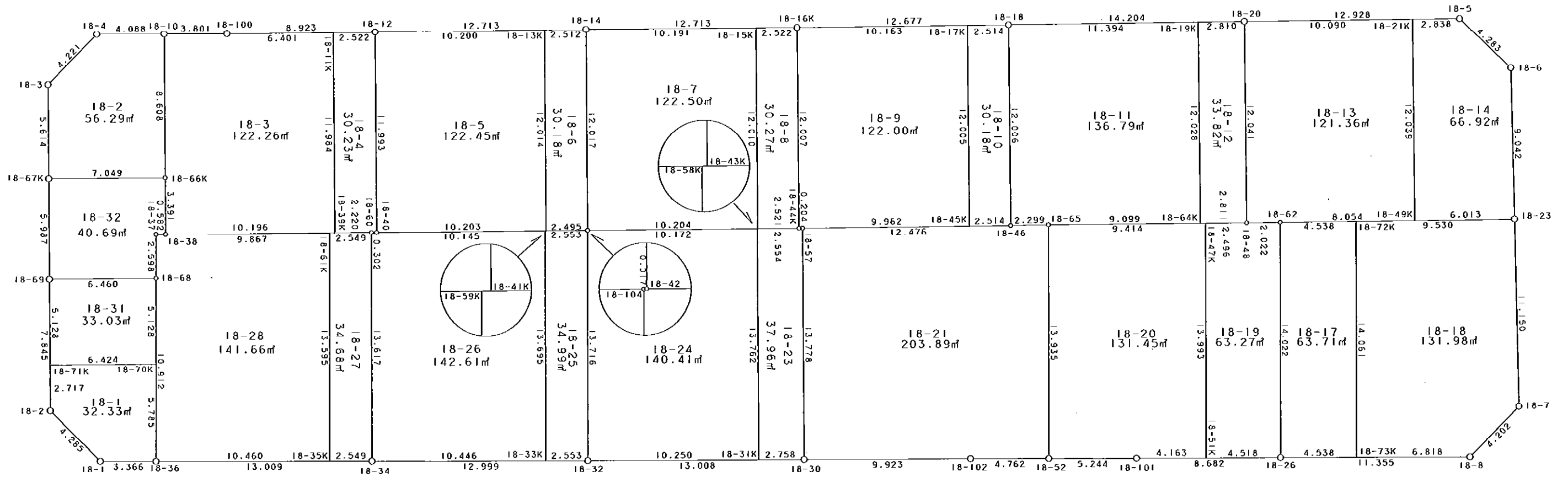


西部第4地区土地区画整理事業 出来形確認測量 (原子図)

18街区



S = 1 / 250



凡 例

記号	名称
⊙	地区界点
○	街区点
○	画地点 (折れ点)
┌	画地点 (直線中)

面積 (座標法) 計算書

地番 = 18街区

測点名	[1] X (i)	[2] X (i+1)-X (i-1)	[3] Y (i)	[4] Y (i+1)-Y (i-1)	[2] * [3]	[1] * [4]	方向角	夾 角	距 離
18-2	-149651.054	-2.821	-41132.230	-10.941	116034.020830	1637332.181814	226-17-10	135-15-49	4.285
18-1	-149654.015	-6.326	-41135.327	-3.179	260222.078602	475750.113685	181-23-45	135-06-35	3.366
18-36	-149657.380	-16.369	-41135.409	-0.431	673345.509921	64502.330780	181-32-14	180-08-29	13.009
18-34	-149670.384	-25.998	-41135.758	-0.692	1069447.436484	103571.905728	181-30-43	179-58-29	12.999
18-32	-149683.378	-25.998	-41136.101	-0.661	1069456.353798	98940.712858	181-24-03	179-53-20	13.008
18-30	-149696.382	-22.924	-41136.419	-0.573	943011.269156	85776.026886	181-28-21	180-04-18	9.923
18-102	-149706.302	-14.680	-41136.674	-0.389	603886.374320	58235.751478	181-36-45	180-08-24	4.762
18-52	-149711.062	-10.002	-41136.808	-0.286	411450.353616	42817.363732	181-39-39	180-02-54	5.244
18-101	-149716.304	-13.921	-41136.960	-0.368	572667.620160	55095.599872	181-25-32	179-45-53	8.682
18-26	-149724.983	-20.030	-41137.176	-0.527	823977.635280	78905.066041	181-34-10	180-08-38	11.355
18-8	-149736.334	-14.377	-41137.487	2.605	591433.650599	-390063.150070	136-03-38	134-29-28	4.202
18-7	-149739.360	-3.093	-41134.571	14.066	127229.228103	-2106233.837760	90-20-39	134-17-01	11.150
18-23	-149739.427	-0.111	-41123.421	20.192	4564.699731	-3023538.509984	90-16-44	179-56-05	9.042
18-6	-149739.471	2.957	-41114.379	12.098	-121575.218703	-1811548.120158	45-31-13	135-14-29	4.283
18-5	-149736.470	15.927	-41111.323	3.289	-654780.041421	-492483.249830	1-01-58	135-30-45	12.928
18-20	-149723.544	27.128	-41111.090	0.466	-1115261.649520	-69771.171504	0-56-24	179-54-26	14.204
18-18	-149709.342	26.877	-41110.857	0.451	-1104936.503589	-67518.913242	0-59-07	180-02-43	12.677
18-16K	-149696.667	25.385	-41110.639	0.484	-1043593.571015	-72453.186828	1-11-56	180-12-49	12.713
18-14	-149683.957	25.421	-41110.373	0.472	-1045066.792033	-70650.827704	0-55-43	179-43-47	12.713
18-12	-149671.246	21.633	-41110.167	0.361	-889336.242711	-54031.319806	0-59-43	180-04-00	8.923
18-100	-149662.324	12.722	-41110.012	0.242	-523001.572664	-36218.282408	1-18-42	180-18-59	3.801
18-10	-149658.524	7.887	-41109.925	0.169	-324233.978475	-25292.290556	1-08-58	179-50-16	4.088
18-4	-149654.437	7.112	-41109.843	-2.862	-292373.203416	428310.998694	315-46-39	134-37-41	4.221
18-3	-149651.412	3.125	-41112.787	-8.557	-128477.459375	1280567.132484	271-01-14	135-14-35	5.614
18-67K	-149651.312	0.218	-41118.400	-11.599	-8963.811200	1735805.567888	271-07-46	180-06-32	5.987
18-69	-149651.194	0.258	-41124.386	-13.830	-10610.091588	2069676.013020	271-01-21	179-53-35	7.845
合計				倍面積 面積	4516.094890 2258.04	-4516.094890 2258.04			221.024

地番	筆種別	面積	坪数
18-1	筆界	32.33	9.78
18-2	筆界	56.29	17.02
18-3	筆界	122.26	36.98
18-4	筆界	30.23	9.14
18-5	筆界	122.45	37.04
18-6	筆界	30.18	9.13
18-7	筆界	122.50	37.05
18-8	筆界	30.27	9.15
18-9	筆界	122.00	36.90
18-10	筆界	30.18	9.13
18-11	筆界	136.79	41.38
18-12	筆界	33.82	10.23
18-13	筆界	121.36	36.71
18-14	筆界	66.92	20.24
18-17	筆界	63.71	19.27
18-18	筆界	131.98	39.92
18-19	筆界	63.27	19.13
18-20	筆界	131.45	39.76
18-21	筆界	203.89	61.67
18-23	筆界	37.96	11.48
18-24	筆界	140.41	42.47
18-25	筆界	34.99	10.58
18-26	筆界	142.61	43.14
18-27	筆界	34.68	10.49
18-28	筆界	141.66	42.85
18-31	筆界	33.03	9.99
18-32	筆界計	40.69	12.31
	合	2257.91	682.94

面積 (座標法) 計算書

地番 = 18-1
測点名

	[1] X (i)	[2] X (i+1)-X (i-1)	[3] Y (i)	[4] Y (i+1)-Y (i-1)	[2] * [3]	[1] * [4]	方向角	夾角	距離
18-71K	-149651.102	6.471	-41129.513	-2.604	-266149.078623	389691.469608	271-00-44	90-00-16	2.717
18-2	-149651.054	-2.913	-41132.230	-5.814	119818.185990	870071.227956	226-17-10	135-16-26	4.285
18-1	-149654.015	-6.326	-41135.327	-3.179	260222.078602	475750.113685	181-23-45	135-06-35	3.366
18-36	-149657.380	-3.510	-41135.409	5.701	144385.285590	-853196.723380	91-26-11	90-02-26	5.785
18-70K	-149657.525	6.278	-41129.626	5.896	-258211.792028	-882380.767400	1-00-28	89-34-17	6.424
合計				倍面積 面積	64.679531 32.33	-64.679531 32.33			22.577

面積 (座標法) 計算書

地番 = 18-2
測点名

	[1] X (i)	[2] X (i+1)-X (i-1)	[3] Y (i)	[4] Y (i+1)-Y (i-1)	[2] * [3]	[1] * [4]	方向角	夾角	距離
18-66K	-149658.360	-7.212	-41118.531	8.475	296546.845572	-1268354.601000	91-05-30	90-01-37	8.608
18-10	-149658.524	3.923	-41109.925	8.688	-161274.235775	-1300233.256512	1-08-58	90-03-28	4.088
18-4	-149654.437	7.112	-41109.843	-2.862	-292373.203416	428310.998694	315-46-39	134-37-41	4.221
18-3	-149651.412	3.125	-41112.787	-8.557	-128477.459375	1280567.132484	271-01-14	135-14-35	5.614
18-67K	-149651.312	-6.948	-41118.400	-5.744	285690.643200	859597.136128	181-03-53	90-02-39	7.049
合計				倍面積 面積	112.590206 56.29	-112.590206 56.29			29.580

面積 (座標法) 計算書

地番 = 18-3
測点名

	[1] X (i)	[2] X (i+1)-X (i-1)	[3] Y (i)	[4] Y (i+1)-Y (i-1)	[2] * [3]	[1] * [4]	方向角	夾角	距離
18-11K	-149668.724	6.174	-41110.123	12.093	-253813.899402	-1809943.879332	0-59-37	89-54-47	6.401
18-100	-149662.324	10.200	-41110.012	0.198	-419322.122400	-29633.140152	1-18-42	180-19-05	3.801
18-10	-149658.524	3.964	-41109.925	-8.519	-162959.742700	1274940.965956	271-05-30	89-46-48	8.608
18-66K	-149658.360	0.220	-41118.531	-11.997	-9046.076820	1795451.344920	270-56-46	179-51-16	3.391
18-38	-149658.304	-10.138	-41121.922	-3.574	416894.045236	534878.778496	181-01-42	90-04-56	10.196
18-39K	-149668.498	-10.420	-41122.105	11.799	428492.334100	-1765938.607902	91-04-50	90-03-08	11.984
合計				倍面積 面積	244.538014 122.26	-244.538014 122.26			44.381

面積 (座標法) 計算書

地番 = 18-4
測点名

	[1] X (i)	[2] X (i+1)-X (i-1)	[3] Y (i)	[4] Y (i+1)-Y (i-1)	[2] * [3]	[1] * [4]	方向角	夾角	距離
18-39K	-149668.498	-1.994	-41122.105	-12.022	81997.477370	1799314.682956	181-01-56	89-57-06	2.220
18-60	-149670.718	-2.522	-41122.145	-0.053	103710.049690	7932.548054	182-27-53	181-25-57	0.302
18-40	-149671.020	-0.528	-41122.158	11.978	21712.499424	-1792759.477560	91-04-47	88-36-54	11.993
18-12	-149671.246	2.296	-41110.167	12.035	-94388.943432	-1801293.445610	0-59-58	89-55-11	2.522
18-11K	-149668.724	2.748	-41110.123	-11.938	-112970.618004	1786745.227112	271-04-50	90-04-52	11.984
合計				倍面積 面積	60.465048 30.23	-60.465048 30.23			29.021

面積 (座標法) 計算書

地番 = 18-5
測点名

	[1] X (i)	[2] X (i+1)-X (i-1)	[3] Y (i)	[4] Y (i+1)-Y (i-1)	[2] * [3]	[1] * [4]	方向角	夾角	距離
18-13K	-149681.445	9.975	-41110.332	12.177	-410075.561700	-1822670.955765	0-55-37	89-51-31	10.200
18-12	-149671.246	10.425	-41110.167	-11.826	-428573.490975	1770012.155196	271-04-47	90-09-10	11.993
18-40	-149671.020	-9.975	-41122.158	-12.177	410193.526050	1822544.010540	181-02-41	89-57-54	10.203
18-41K	-149681.221	-10.425	-41122.344	11.826	428700.436200	-1770130.119546	91-04-06	90-01-25	12.014
合計				倍面積 面積	244.909575 122.45	-244.909575 122.45			44.410

面積 (座標法) 計算書

地番 = 18-6
測点名

	[1] X (i)	[2] X (i+1)-X (i-1)	[3] Y (i)	[4] Y (i+1)-Y (i-1)	[2] * [3]	[1] * [4]	方向角	夾角	距離
18-41K	-149681.221	-2.271	-41122.344	-12.057	93388.843224	1804706.481597	181-02-00	89-57-54	2.495
18-104	-149683.716	-2.512	-41122.389	-0.044	103299.441168	6586.083504	176-38-01	175-36-01	0.017
18-42	-149683.733	-0.241	-41122.388	12.016	9910.495508	-1798599.735728	91-04-05	94-26-04	12.017
18-14	-149683.957	2.288	-41110.373	12.056	-94060.533424	-1804589.785592	0-56-06	89-52-01	2.512
18-13K	-149681.445	2.736	-41110.332	-11.971	-112477.868352	1791836.578095	271-04-06	90-08-00	12.014
合計				倍面積 面積	60.378124 30.18	-60.378124 30.18			29.055

面積 (座標法) 計算書

地番 = 18-7
測点名

	[1] X (i)	[2] X (i+1)-X (i-1)	[3] Y (i)	[4] Y (i+1)-Y (i-1)	[2] * [3]	[1] * [4]	方向角	夾角	距離
18-15K	-149694.146	9.978	-41110.586	12.221	-410201.427108	-1829412.158266	1-11-51	90-11-27	10.191
18-14	-149683.957	10.413	-41110.373	-11.802	-428082.314049	1766570.060514	271-04-05	89-52-14	12.017
18-42	-149683.733	-9.978	-41122.388	-12.221	410319.187464	1829284.900993	181-09-24	90-05-19	10.204
18-43K	-149693.935	-10.413	-41122.594	11.802	428209.571322	-1766687.820870	91-00-24	89-51-00	12.010
合計				倍面積 面積	245.017629 122.50	-245.017629 122.50			44.422

面積 (座標法) 計算書

地番 = 18-8
測点名

	[1] X (i)	[2] X (i+1)-X (i-1)	[3] Y (i)	[4] Y (i+1)-Y (i-1)	[2] * [3]	[1] * [4]	方向角	夾角	距離
18-43K	-149693.935	-2.310	-41122.594	-12.058	94993.192140	1805009.468230	181-08-10	90-07-46	2.521
18-44K	-149696.456	-2.732	-41122.644	11.955	112347.063408	-1789621.131480	91-00-25	89-52-15	12.007
18-16K	-149696.667	2.310	-41110.639	12.058	-94965.576090	-1805042.410686	1-12-16	90-11-51	2.522
18-15K	-149694.146	2.732	-41110.586	-11.955	-112314.120952	1789593.515430	271-00-24	89-48-08	12.010
合計				倍面積 面積	60.558506 30.27	-60.558506 30.27			29.060

面積 (座標法) 計算書

地番 = 18-9

測点名	[1] X (i)	[2] X (i+1)-X (i-1)	[3] Y (i)	[4] Y (i+1)-Y (i-1)	[2]*[3]	[1]*[4]	方向角	夾角	距離
18-17K	-149706.828	9.953	-41110.814	12.178	-409175.931742	-1823129.751384	0-59-12	89-59-38	10.163
18-16K	-149696.667	10.372	-41110.639	-11.830	-426399.547708	1770911.570610	271-00-25	90-01-13	12.007
18-44K	-149696.456	0.007	-41122.644	-12.005	-287.858508	1797105.954280	180-00-00	88-59-35	0.204
18-57	-149696.660	-10.164	-41122.644	-0.173	417970.553616	25897.522180	180-59-42	180-59-42	9.962
18-45K	-149706.620	-10.168	-41122.817	11.830	418136.803256	-1771029.314600	90-59-34	89-59-52	12.005
合計				倍面積 面積	244.018914 122.00	-244.018914 122.00			44.341

面積 (座標法) 計算書

地番 = 18-10

測点名	[1] X (i)	[2] X (i+1)-X (i-1)	[3] Y (i)	[4] Y (i+1)-Y (i-1)	[2]*[3]	[1]*[4]	方向角	夾角	距離
18-45K	-149706.620	-2.306	-41122.817	-12.047	94829.216002	1803515.651140	181-00-10	90-00-36	2.514
18-46	-149709.134	-2.722	-41122.861	11.960	111936.427642	-1790521.242640	90-59-34	89-59-24	12.006
18-18	-149709.342	2.306	-41110.857	12.047	-94801.636242	-1803548.443074	0-58-48	89-59-14	2.514
18-17K	-149706.828	2.722	-41110.814	-11.960	-111903.635708	1790493.662880	270-59-34	90-00-46	12.005
合計				倍面積 面積	60.371694 30.18	-60.371694 30.18			29.039

面積 (座標法) 計算書

地番 = 18-11

測点名	[1] X (i)	[2] X (i+1)-X (i-1)	[3] Y (i)	[4] Y (i+1)-Y (i-1)	[2]*[3]	[1]*[4]	方向角	夾角	距離
18-19K	-149720.734	11.188	-41111.044	12.213	-459950.360272	-1828539.324342	0-56-26	89-58-07	11.394
18-18	-149709.342	11.600	-41110.857	-11.817	-476885.941200	1769115.294414	270-59-34	90-03-08	12.006
18-46	-149709.134	-2.091	-41122.861	-12.021	85987.902351	1799653.499814	180-25-25	89-25-51	2.299
18-65	-149711.433	-11.396	-41122.878	-0.209	468636.317688	31289.689497	181-12-33	180-47-08	9.099
18-64K	-149720.530	-9.301	-41123.070	11.834	382485.674070	-1771792.752020	90-58-19	89-45-46	12.028
合計				倍面積 面積	273.592637 136.79	-273.592637 136.79			46.826

面積 (座標法) 計算書

地番 = 18-12

測点名	[1] X (i)	[2] X (i+1)-X (i-1)	[3] Y (i)	[4] Y (i+1)-Y (i-1)	[2]*[3]	[1]*[4]	方向角	夾角	距離
18-64K	-149720.530	-2.606	-41123.070	-12.085	107166.720420	1809372.605050	181-12-10	90-13-51	2.811
18-48	-149723.340	-3.014	-41123.129	11.980	123945.110806	-1793685.613200	90-58-15	89-46-05	12.041
18-20	-149723.544	2.606	-41111.090	12.085	-107135.500540	-1809409.029240	0-56-16	89-58-01	2.810
18-19K	-149720.734	3.014	-41111.044	-11.980	-123908.686616	1793654.393320	270-58-19	90-02-03	12.028
合計				倍面積 面積	67.644070 33.82	-67.644070 33.82			29.690

面積 (座標法) 計算書

地番 = 18-13

測点名	[1] X (i)	[2] X (i+1)-X (i-1)	[3] Y (i)	[4] Y (i+1)-Y (i-1)	[2] * [3]	[1] * [4]	方向角	夾 角	距 離
18-21K	-149733.632	9.871	-41111.272	12.219	-405809.365912	-1829595.249408	1-02-01	90-00-03	10.090
18-20	-149723.544	10.292	-41111.090	-11.857	-423115.338280	1775272.061208	270-58-15	89-56-14	12.041
18-48	-149723.340	-1.818	-41123.129	-12.069	74761.848522	1807010.990460	180-51-00	89-52-45	2.022
18-62	-149725.362	-10.075	-41123.159	-0.180	414315.826925	26950.565160	181-04-02	180-13-02	8.054
18-49K	-149733.415	-8.270	-41123.309	11.887	340089.765430	-1779881.104105	91-01-58	89-57-56	12.039
合計				倍面積 面積	242.736685 121.36	-242.736685 121.36			44.246

面積 (座標法) 計算書

地番 = 18-14

測点名	[1] X (i)	[2] X (i+1)-X (i-1)	[3] Y (i)	[4] Y (i+1)-Y (i-1)	[2] * [3]	[1] * [4]	方向角	夾 角	距 離
18-49K	-149733.415	-5.795	-41123.309	-12.149	238309.575655	1819111.258835	181-04-02	90-02-04	6.013
18-23	-149739.427	-6.056	-41123.421	8.930	249043.437576	-1337173.083110	90-16-44	89-12-42	9.042
18-6	-149739.471	2.957	-41114.379	12.098	-121575.218703	-1811548.120158	45-31-13	135-14-29	4.283
18-5	-149736.470	5.839	-41111.323	3.107	-240049.014997	-465231.212290	1-01-46	135-30-33	2.838
18-21K	-149733.632	3.055	-41111.272	-11.986	-125594.935960	1794707.313152	271-01-58	90-00-12	12.039
合計				倍面積 面積	133.843571 66.92	-133.843571 66.92			34.215

面積 (座標法) 計算書

地番 = 18-17

測点名	[1] X (i)	[2] X (i+1)-X (i-1)	[3] Y (i)	[4] Y (i+1)-Y (i-1)	[2] * [3]	[1] * [4]	方向角	夾 角	距 離
18-72K	-149729.899	4.157	-41123.244	14.141	-170949.325308	-2117330.501759	1-04-24	89-31-29	4.538
18-62	-149725.362	4.916	-41123.159	-13.932	-202161.449644	2085973.743384	271-32-56	90-28-32	14.022
18-26	-149724.983	-4.157	-41137.176	-14.141	171007.240632	2117260.984603	181-33-57	90-01-01	4.538
18-73K	-149729.519	-4.916	-41137.300	13.932	202230.966800	-2086031.658708	91-32-55	89-58-58	14.061
合計				倍面積 面積	127.432480 63.71	-127.432480 63.71			37.159

面積 (座標法) 計算書

地番 = 18-18

測点名	[1] X (i)	[2] X (i+1)-X (i-1)	[3] Y (i)	[4] Y (i+1)-Y (i-1)	[2] * [3]	[1] * [4]	方向角	夾 角	距 離
18-73K	-149729.519	-6.435	-41137.300	-14.243	264718.525500	2132597.539117	181-34-18	90-01-23	6.818
18-8	-149736.334	-9.841	-41137.487	2.729	404834.009567	-408630.455486	136-03-38	134-29-20	4.202
18-7	-149739.360	-3.093	-41134.571	14.066	127229.228103	-2106233.837760	90-20-39	134-17-01	11.150
18-23	-149739.427	9.461	-41123.421	11.327	-389068.686081	-1696098.489629	1-03-51	90-43-12	9.530
18-72K	-149729.899	9.908	-41123.244	-13.879	-407449.101552	2078101.268221	271-32-55	90-29-04	14.061
合計				倍面積 面積	263.975537 131.98	-263.975537 131.98			45.761

面積 (座標法) 計算書

地番 = 18-19

測点名	[1] X (i)	[2] X (i+1)-X (i-1)	[3] Y (i)	[4] Y (i+1)-Y (i-1)	[2]*[3]	[1]*[4]	方向角	夾角	距離
18-51K	-149720.466	-4.138	-41137.064	-14.100	170225.170832	2111058.570600	181-25-13	89-52-06	4.518
18-26	-149724.983	-4.896	-41137.176	13.905	201407.613696	-2081925.888615	91-32-56	90-07-43	14.022
18-62	-149725.362	1.643	-41123.159	14.047	-67565.350237	-2103192.160014	0-51-00	89-18-04	2.022
18-48	-149723.340	4.517	-41123.129	0.083	-185753.173693	-12427.037220	1-13-01	180-22-01	2.496
18-47K	-149720.845	2.874	-41123.076	-13.935	-118187.720424	2086359.975075	271-33-07	90-20-06	13.993
合計				倍面積 面積	126.540174 63.27	-126.540174 63.27			37.051

面積 (座標法) 計算書

地番 = 18-20

測点名	[1] X (i)	[2] X (i+1)-X (i-1)	[3] Y (i)	[4] Y (i+1)-Y (i-1)	[2]*[3]	[1]*[4]	方向角	夾角	距離
18-47K	-149720.845	9.033	-41123.076	14.186	-371464.745508	-2123939.907170	1-12-19	89-39-12	9.414
18-65	-149711.433	9.783	-41122.878	-13.732	-402305.115474	2055837.397956	271-31-32	90-19-13	13.935
18-52	-149711.062	-4.871	-41136.808	-14.082	200377.391768	2108231.175084	181-39-39	90-08-07	5.244
18-101	-149716.304	-9.404	-41136.960	-0.256	386851.971840	38327.373824	181-25-53	179-46-14	4.163
18-51K	-149720.466	-4.541	-41137.064	13.884	186803.407624	-2078718.949944	91-33-07	90-07-14	13.993
合計				倍面積 面積	262.910250 131.45	-262.910250 131.45			46.749

面積 (座標法) 計算書

地番 = 18-21

測点名	[1] X (i)	[2] X (i+1)-X (i-1)	[3] Y (i)	[4] Y (i+1)-Y (i-1)	[2]*[3]	[1]*[4]	方向角	夾角	距離
18-57	-149696.660	12.752	-41122.644	-13.558	-524395.956288	2029587.316280	271-09-22	90-09-34	13.778
18-30	-149696.382	-9.642	-41136.419	-14.030	396637.351998	2100240.239460	181-28-21	90-18-59	9.923
18-102	-149706.302	-14.680	-41136.674	-0.389	603886.374320	58235.751478	181-36-45	180-08-24	4.762
18-52	-149711.062	-5.131	-41136.808	13.796	211072.961848	-2065413.811352	91-31-32	89-54-47	13.935
18-65	-149711.433	1.928	-41122.878	13.947	-79284.908784	-2088025.356051	0-25-25	88-53-53	2.299
18-46	-149709.134	14.773	-41122.861	0.234	-607508.025553	-35031.937356	0-59-48	180-34-23	12.476
合計				倍面積 面積	407.797541 203.89	-407.797541 203.89			57.173

面積 (座標法) 計算書

地番 = 18-23

測点名	[1] X (i)	[2] X (i+1)-X (i-1)	[3] Y (i)	[4] Y (i+1)-Y (i-1)	[2]*[3]	[1]*[4]	方向角	夾角	距離
18-31K	-149693.625	-2.479	-41136.352	-13.826	101977.016608	2069664.059250	181-23-32	90-14-05	2.758
18-30	-149696.382	-3.035	-41136.419	13.708	124849.031665	-2052038.004456	91-09-22	89-45-50	13.778
18-57	-149696.660	-0.074	-41122.644	13.775	3043.075656	-2062071.491500	0-00-00	88-50-38	0.204
18-44K	-149696.456	2.757	-41122.644	0.051	-113375.129508	-7634.519256	1-08-40	181-08-40	2.554
18-58K	-149693.903	2.831	-41122.593	-13.708	-116418.060783	2052004.022324	271-09-27	90-00-47	13.762
合計				倍面積 面積	75.933638 37.96	-75.933638 37.96			33.056

面積 (座標法) 計算書

地番 = 18-24
測点名

	[1] X (i)	[2] X (i+1)-X (i-1)	[3] Y (i)	[4] Y (i+1)-Y (i-1)	[2] * [3]	[1] * [4]	方向角	夾角	距離
18-58K	-149693.903	9.892	-41122.593	13.964	-406784.689956	-2090325.661492	1-09-17	89-59-50	10.172
18-42	-149683.733	10.187	-41122.388	0.204	-418913.766556	-30535.481532	356-38-01	175-28-44	0.017
18-104	-149683.716	0.355	-41122.389	-13.713	-14598.448095	2052612.797508	271-24-43	94-46-42	13.716
18-32	-149683.378	-9.909	-41136.101	-13.963	407617.624809	2090029.007014	181-24-11	89-59-28	10.250
18-31K	-149693.625	-10.525	-41136.352	13.508	432960.104800	-2022061.486500	91-09-27	89-45-16	13.762
合計				倍面積 面積	280.825002 140.41	-280.825002 140.41			47.917

面積 (座標法) 計算書

地番 = 18-25
測点名

	[1] X (i)	[2] X (i+1)-X (i-1)	[3] Y (i)	[4] Y (i+1)-Y (i-1)	[2] * [3]	[1] * [4]	方向角	夾角	距離
18-33K	-149680.826	-2.215	-41136.034	-13.758	91116.315310	2059308.804108	181-30-14	90-05-38	2.553
18-32	-149683.378	-2.890	-41136.101	13.645	118883.331890	-2042429.692810	91-24-43	89-54-29	13.716
18-104	-149683.716	2.215	-41122.389	13.758	-91086.091635	-2059348.564728	1-01-56	89-37-13	2.553
18-59K	-149681.163	2.890	-41122.343	-13.645	-118843.571270	2042399.469135	271-24-36	90-22-40	13.695
合計				倍面積 面積	69.984295 34.99	-69.984295 34.99			32.517

面積 (座標法) 計算書

地番 = 18-26
測点名

	[1] X (i)	[2] X (i+1)-X (i-1)	[3] Y (i)	[4] Y (i+1)-Y (i-1)	[2] * [3]	[1] * [4]	方向角	夾角	距離
18-59K	-149681.163	9.806	-41122.343	13.876	-403245.695458	-2076975.817788	1-02-42	89-38-06	10.145
18-40	-149671.020	10.445	-41122.158	0.198	-429520.940310	-29634.861960	2-27-53	181-25-11	0.302
18-60	-149670.718	0.636	-41122.145	-13.600	-26153.684220	2035521.764800	271-24-20	88-56-27	13.617
18-34	-149670.384	-10.108	-41135.758	-13.889	415800.241864	2078771.963376	181-30-51	90-06-31	10.446
18-33K	-149680.826	-10.779	-41136.034	13.415	443405.310486	-2007968.280790	91-24-36	89-53-45	13.695
合計				倍面積 面積	285.232362 142.61	-285.232362 142.61			48.205

面積 (座標法) 計算書

地番 = 18-27
測点名

	[1] X (i)	[2] X (i+1)-X (i-1)	[3] Y (i)	[4] Y (i+1)-Y (i-1)	[2] * [3]	[1] * [4]	方向角	夾角	距離
18-35K	-149667.836	-2.215	-41135.690	-13.659	91115.553350	2044312.971924	181-31-43	90-07-30	2.549
18-34	-149670.384	-2.882	-41135.758	13.545	118553.254556	-2027285.351280	91-24-20	89-52-37	13.617
18-60	-149670.718	2.215	-41122.145	13.659	-91085.551175	-2044352.337162	1-02-02	89-37-42	2.549
18-61K	-149668.169	2.882	-41122.099	-13.545	-118513.889318	2027255.349105	271-24-13	90-22-11	13.595
合計				倍面積 面積	69.367413 34.68	-69.367413 34.68			32.310

面積 (座標法) 計算書

地番 = 18-28
測点名

	[1] X (i)	[2] X (i+1)-X (i-1)	[3] Y (i)	[4] Y (i+1)-Y (i-1)	[2] * [3]	[1] * [4]	方向角	夾角	距離
18-61K	-149668.169	9.532	-41122.099	13.768	-391975.847668	-2060631.350792	1-01-40	89-37-27	9.867
18-38	-149658.304	10.447	-41121.922	0.196	-429600.719134	-29333.027584	1-52-11	180-50-31	0.582
18-37	-149657.722	0.651	-41121.903	-2.578	-26770.358853	385817.607316	271-31-19	89-39-08	2.598
18-68	-149657.653	0.342	-41124.500	-13.506	-14064.579000	2021276.261418	271-26-01	179-54-42	10.912
18-36	-149657.380	-10.183	-41135.409	-11.190	418881.869847	1674666.082200	181-32-22	90-06-21	10.460
18-35K	-149667.836	-10.789	-41135.690	13.310	443812.959410	-1992078.897160	91-24-13	89-51-51	13.595
合計				倍面積 面積	283.324602 141.66	-283.324602 141.66			48.014

面積 (座標法) 計算書

地番 = 18-31
測点名

	[1] X (i)	[2] X (i+1)-X (i-1)	[3] Y (i)	[4] Y (i+1)-Y (i-1)	[2] * [3]	[1] * [4]	方向角	夾角	距離
18-70K	-149657.525	-6.551	-41129.626	5.013	269440.179926	-750233.172825	91-25-50	90-25-22	5.128
18-68	-149657.653	6.331	-41124.500	5.240	-260359.209500	-784206.101720	1-00-40	89-34-50	6.460
18-69	-149651.194	6.551	-41124.386	-5.013	-269405.852686	750201.435522	271-01-41	90-01-01	5.128
18-71K	-149651.102	-6.331	-41129.513	-5.240	260390.946803	784171.774480	181-00-28	89-58-47	6.424
合計				倍面積 面積	66.064543 33.03	-66.064543 33.03			23.140

面積 (座標法) 計算書

地番 = 18-32
測点名

	[1] X (i)	[2] X (i+1)-X (i-1)	[3] Y (i)	[4] Y (i+1)-Y (i-1)	[2] * [3]	[1] * [4]	方向角	夾角	距離
18-67K	-149651.312	7.166	-41118.400	-5.855	-294654.454400	876208.431760	271-07-46	90-03-53	5.987
18-69	-149651.194	-6.341	-41124.386	-6.100	260769.731626	912872.283400	181-00-40	89-52-54	6.460
18-68	-149657.653	-6.528	-41124.500	2.483	268460.736000	-371599.952399	91-31-19	90-30-39	2.598
18-37	-149657.722	-0.651	-41121.903	2.578	26770.358853	-385817.607316	181-52-11	270-20-52	0.582
18-38	-149658.304	-0.638	-41121.922	3.372	26235.786236	-504647.801088	90-56-46	89-04-35	3.391
18-66K	-149658.360	6.992	-41118.531	3.522	-287500.768752	-527096.743920	1-03-53	90-07-07	7.049
合計				倍面積 面積	81.389563 40.69	-81.389563 40.69			26.067