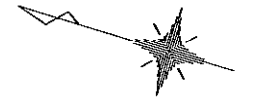
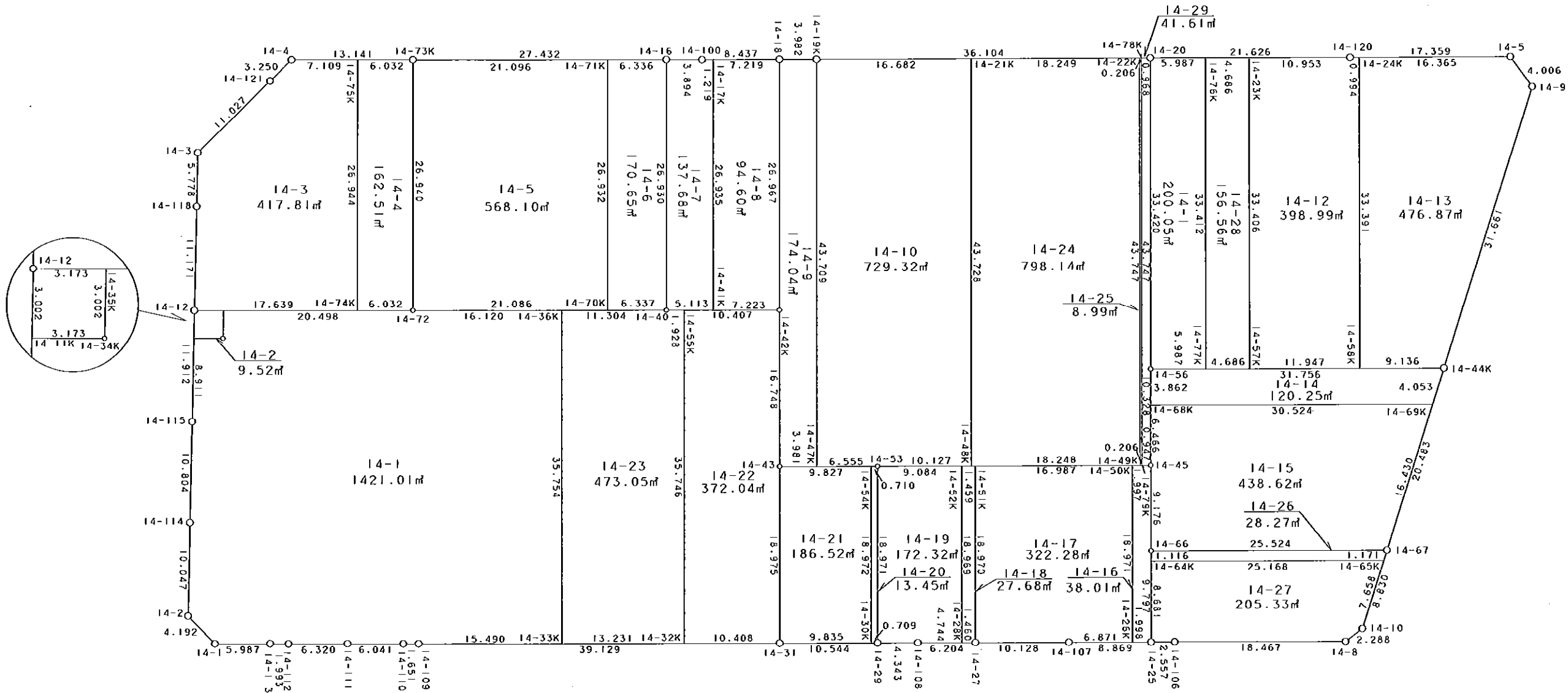


14街区



S = 1 / 500



凡 例

記号	名称
⊙	地区界点
○	街区点
○	画地点 (折れ点)
┆	画地点 (直線中)

面積 (座標法) 計算書

地番 = 14街区

測点名	[1] X (i)	[2] X (i+1)-X (i-1)	[3] Y (i)	[4] Y (i+1)-Y (i-1)	[2]*[3]	[1]*[4]	方向角	夾角	距離
14-12	-149505.699	-6.162	-41074.777	-22.246	253102.775874	3325903.779954	254-27-44	179-53-08	11.912
14-115	-149508.890	-6.075	-41086.254	-21.889	249598.993050	3272600.093210	254-31-04	180-03-20	10.804
14-114	-149511.774	-5.583	-41096.666	-20.090	229442.686278	3003691.539660	254-25-02	179-53-58	10.047
14-2	-149514.473	-6.365	-41106.344	-11.711	261641.879560	1750963.993303	209-00-39	134-35-37	4.192
14-1	-149518.139	-9.400	-41108.377	-0.311	386418.743800	46500.141229	163-17-03	134-16-24	5.987
14-113	-149523.873	-7.648	-41106.655	2.278	314383.697440	-340615.382694	163-48-07	180-31-04	1.993
14-112	-149525.787	-7.965	-41106.099	2.381	327410.078535	-356020.898847	163-13-00	179-24-53	6.320
14-111	-149531.838	-11.843	-41104.274	3.541	486797.916982	-529492.238358	163-29-49	180-16-49	6.041
14-110	-149537.630	-7.371	-41102.558	2.198	302966.955018	-328683.710740	163-01-29	179-31-40	1.651
14-109	-149539.209	-39.069	-41102.076	11.688	1605817.007244	-1747814.274792	163-21-30	180-20-01	39.129
14-31	-149576.699	-47.593	-41090.870	14.222	1955637.775910	-2127279.813178	163-22-42	180-01-12	10.544
14-29	-149586.802	-14.262	-41087.854	4.266	585994.973748	-638137.297332	163-16-18	179-53-36	4.343
14-108	-149590.961	-10.106	-41086.604	3.017	415221.220024	-451315.929337	163-27-07	180-10-49	6.204
14-27	-149596.908	-15.649	-41084.837	4.673	642936.614213	-699066.351084	163-19-32	179-52-25	10.128
14-107	-149606.610	-18.204	-41081.931	5.431	747855.471924	-812513.498910	163-27-33	180-08-01	8.869
14-25	-149615.112	-10.947	-41079.406	3.273	449696.257482	-489690.261576	162-59-22	179-31-49	2.557
14-106	-149617.557	-20.146	-41078.658	6.011	827570.644068	-899351.135127	163-26-29	180-27-07	18.467
14-8	-149635.258	-19.052	-41073.395	7.109	782530.321540	-1063757.049122	126-11-55	142-45-26	2.288
14-10	-149636.609	-1.515	-41071.549	10.674	62223.396735	-1597221.164466	91-03-51	144-51-56	8.830
14-67	-149636.773	-0.521	-41062.721	29.308	21393.677641	-4385554.543084	90-59-55	179-56-04	20.483
14-44K	-149637.130	-0.921	-41042.241	52.136	37799.903961	-7801481.409680	91-01-15	180-01-20	31.661
14-9	-149637.694	2.617	-41010.585	34.091	-107324.700945	-5101298.626154	37-26-00	126-24-45	4.006
14-5	-149634.513	19.806	-41008.150	-2.559	-812207.418900	382914.718767	343-16-49	125-50-49	17.359
14-120	-149617.888	37.354	-41013.144	-11.159	-1532004.980976	1669586.012192	343-26-13	180-09-24	21.626
14-20	-149597.159	55.314	-41019.309	-16.526	-2268942.058026	2472242.649634	343-19-22	179-53-09	36.104
14-19K	-149562.574	38.402	-41029.670	-11.494	-1575621.387340	1719072.225556	343-28-03	180-08-41	3.982
14-18	-149558.757	11.896	-41030.803	-3.566	-488102.432488	533326.527462	343-14-25	179-46-22	8.437
14-100	-149550.678	11.812	-41033.236	-3.540	-484684.583632	529409.400120	343-28-57	180-14-32	3.894
14-16	-149546.945	30.021	-41034.343	-8.946	-1231892.011203	1337846.969970	343-23-44	179-54-47	27.432
14-73K	-149520.657	38.880	-41042.182	-11.597	-1595720.036160	1733991.059229	343-22-57	179-59-13	13.141
14-4	-149508.065	14.148	-41045.940	-6.611	-580717.959120	988397.817715	298-36-28	135-13-31	3.250
14-121	-149506.509	6.892	-41048.793	-12.503	-282908.281356	1869279.882027	298-56-26	180-19-58	11.027
14-3	-149501.173	3.781	-41058.443	-15.215	-155241.972983	2274660.347195	254-23-18	135-26-52	5.778
14-118	-149502.728	-4.526	-41064.008	-16.334	185855.700208	2441977.559152	254-34-36	180-11-18	11.171
合計				倍面積 面積	16928.868106 8464.43	-16928.868106 8464.43			389.657

地番	筆種別	面積	坪数
14-1	筆界	1421.01	429.85
14-2	筆界	9.52	2.88
14-3	筆界	417.81	126.39
14-4	筆界	162.51	49.16
14-5	筆界	568.10	171.85
14-6	筆界	170.65	51.62
14-7	筆界	137.68	41.64
14-8	筆界	194.60	58.86
14-9	筆界	174.04	52.64
14-10	筆界	729.32	220.62
14-11	筆界	200.05	60.51
14-12	筆界	398.99	120.69
14-13	筆界	476.87	144.25
14-14	筆界	120.25	36.37
14-15	筆界	438.62	132.68
14-16	筆界	38.01	11.50
14-17	筆界	322.28	97.49
14-18	筆界	27.68	8.37
14-19	筆界	172.32	52.12
14-20	筆界	13.45	4.06
14-21	筆界	186.52	56.42
14-22	筆界	372.04	112.54
14-23	筆界	473.05	143.09
14-24	筆界	798.14	241.43
14-25	筆界	8.99	2.72
14-26	筆界	28.27	8.55
14-27	筆界	205.33	62.11
14-28	筆界	156.56	47.36
14-29	筆界	41.61	12.58
	合計	8464.27	2560.35

面積 (座標法) 計算書

地番 = 14-1
測点名

	[1] X (i)	[2] X (i+1)-X (i-1)	[3] Y (i)	[4] Y (i+1)-Y (i-1)	[2] * [3]	[1] * [4]	方向角	夾 角	距 離
14-2	-149514.473	-6.365	-41106.344	-11.711	261641.879560	1750963.993303	209-00-39	134-35-37	4.192
14-1	-149518.139	-9.400	-41108.377	-0.311	386418.743800	46500.141229	163-17-03	134-16-24	5.987
14-113	-149523.873	-7.648	-41106.655	2.278	314383.697440	-340615.382694	163-48-07	180-31-04	1.993
14-112	-149525.787	-7.965	-41106.099	2.381	327410.078535	-356020.898847	163-13-00	179-24-53	6.320
14-111	-149531.838	-11.843	-41104.274	3.541	486797.916982	-529492.238358	163-29-49	180-16-49	6.041
14-110	-149537.630	-7.371	-41102.558	2.198	302966.955018	-328683.710740	163-01-29	179-31-40	1.651
14-109	-149539.209	-16.420	-41102.076	4.918	674896.087920	-735433.829862	163-21-31	180-20-02	15.490
14-33K	-149554.050	-4.614	-41097.640	38.696	189624.510960	-5787143.518800	73-22-45	90-01-14	35.754
14-36K	-149543.823	25.673	-41063.380	29.648	-1054220.154740	-4433675.264304	343-22-30	89-59-45	16.120
14-72	-149528.377	35.084	-41067.992	-10.488	-1440829.431328	1568253.617976	343-20-31	179-58-01	20.498
14-35K	-149508.739	18.834	-41073.868	-8.768	-773585.229912	1310892.623552	254-27-49	91-07-18	3.002
14-34K	-149509.543	2.236	-41076.760	-3.801	-91847.635360	568285.772943	343-21-10	268-53-21	3.173
14-11K	-149506.503	0.653	-41077.669	-9.494	-26823.717857	1419414.739482	254-27-42	91-06-32	8.911
14-115	-149508.890	-5.271	-41086.254	-18.997	216565.644834	2840220.383330	254-31-04	180-03-22	10.804
14-114	-149511.774	-5.583	-41096.666	-20.090	229442.686278	3003691.539660	254-25-02	179-53-58	10.047
合計				倍面積 面積	2842.032130 1421.01	-2842.032130 1421.01			149.983

面積 (座標法) 計算書

地番 = 14-2
測点名

	[1] X (i)	[2] X (i+1)-X (i-1)	[3] Y (i)	[4] Y (i+1)-Y (i-1)	[2] * [3]	[1] * [4]	方向角	夾 角	距 離
14-35K	-149508.739	3.844	-41073.868	1.983	-157887.948592	-296475.829437	343-21-10	88-53-21	3.173
14-12	-149505.699	2.236	-41074.777	-3.801	-91843.201372	568271.161899	254-27-49	91-06-39	3.002
14-11K	-149506.503	-3.844	-41077.669	-1.983	157902.559636	296471.395449	163-21-10	88-53-21	3.173
14-34K	-149509.543	-2.236	-41076.760	3.801	91847.635360	-568285.772943	74-27-49	91-06-39	3.002
合計				倍面積 面積	19.045032 9.52	-19.045032 9.52			12.350

面積 (座標法) 計算書

地番 = 14-3
測点名

	[1] X (i)	[2] X (i+1)-X (i-1)	[3] Y (i)	[4] Y (i+1)-Y (i-1)	[2] * [3]	[1] * [4]	方向角	夾 角	距 離
14-75K	-149514.877	14.533	-41043.907	23.781	-596491.100431	-3555613.289937	343-22-57	90-02-04	7.109
14-4	-149508.065	8.368	-41045.940	-4.886	-343472.425920	730496.405590	298-36-28	135-13-31	3.250
14-121	-149506.509	6.892	-41048.793	-12.503	-282908.281356	1869279.882027	298-56-26	180-19-58	11.027
14-3	-149501.173	3.781	-41058.443	-15.215	-155241.972983	2274660.347195	254-23-18	135-26-52	5.778
14-118	-149502.728	-4.526	-41064.008	-16.334	185855.700208	2441977.559152	254-34-36	180-11-18	11.171
14-12	-149505.699	-19.870	-41074.777	-5.713	816155.818990	854126.058387	163-20-36	88-46-00	17.639
14-74K	-149522.598	-9.178	-41069.721	30.870	376937.899338	-4615762.600260	73-20-53	90-00-17	26.944
合計				倍面積 面積	835.637846 417.81	-835.637846 417.81			82.918

面積 (座標法) 計算書

地番 = 14-4
測点名

	[1] X (i)	[2] X (i+1)-X (i-1)	[3] Y (i)	[4] Y (i+1)-Y (i-1)	[2] * [3]	[1] * [4]	方向角	夾角	距離
14-74K	-149522.598	-13.500	-41069.721	-24.085	554441.233500	3601251.772830	163-20-37	89-59-44	6.032
14-72	-149528.377	1.941	-41067.992	27.539	-79712.972472	-4117861.974203	73-20-51	90-00-14	26.940
14-73K	-149520.657	13.500	-41042.182	24.085	-554069.457000	-3601205.023845	343-22-58	90-02-07	6.032
14-75K	-149514.877	-1.941	-41043.907	-27.539	79666.223487	4117490.197703	253-20-53	89-57-55	26.944
合計				倍面積 面積	325.027515 162.51	-325.027515 162.51			65.948

面積 (座標法) 計算書

地番 = 14-5
測点名

	[1] X (i)	[2] X (i+1)-X (i-1)	[3] Y (i)	[4] Y (i+1)-Y (i-1)	[2] * [3]	[1] * [4]	方向角	夾角	距離
14-71K	-149540.873	27.925	-41036.154	19.777	-1145934.600450	-2957469.845321	343-23-47	90-01-46	21.096
14-73K	-149520.657	12.496	-41042.182	-31.838	-512863.106272	4760438.677566	253-20-51	89-57-04	26.940
14-72	-149528.377	-27.925	-41067.992	-19.777	1146823.676600	2957222.711929	163-22-30	90-01-39	21.086
14-70K	-149548.582	-12.496	-41061.959	31.838	513110.239664	-4761327.753716	73-22-01	89-59-31	26.932
合計				倍面積 面積	1136.209542 568.10	-1136.209542 568.10			96.054

面積 (座標法) 計算書

地番 = 14-6
測点名

	[1] X (i)	[2] X (i+1)-X (i-1)	[3] Y (i)	[4] Y (i+1)-Y (i-1)	[2] * [3]	[1] * [4]	方向角	夾角	距離
14-70K	-149548.582	-13.781	-41061.959	-23.992	565874.856979	3587969.579344	163-22-31	90-00-30	6.337
14-40	-149554.654	1.637	-41060.146	27.616	-67215.459002	-4130101.324864	73-21-57	89-59-26	26.930
14-16	-149546.945	13.781	-41034.343	23.992	-565494.280883	-3587930.304440	343-23-33	90-01-36	6.336
14-71K	-149540.873	-1.637	-41036.154	-27.616	67176.184098	4129720.748768	253-22-01	89-58-28	26.932
合計				倍面積 面積	341.301192 170.65	-341.301192 170.65			66.535

面積 (座標法) 計算書

地番 = 14-7
測点名

	[1] X (i)	[2] X (i+1)-X (i-1)	[3] Y (i)	[4] Y (i+1)-Y (i-1)	[2] * [3]	[1] * [4]	方向角	夾角	距離
14-17K	-149551.845	8.878	-41032.885	25.457	-364289.953030	-3807141.318165	343-15-37	89-53-44	1.219
14-100	-149550.678	4.900	-41033.236	-1.458	-201062.856400	218044.888524	343-28-57	180-13-20	3.894
14-16	-149546.945	-3.976	-41034.343	-26.910	163152.547768	4024308.289950	253-21-57	89-53-00	26.930
14-40	-149554.654	-12.611	-41060.146	-24.350	517809.501206	3641655.824900	163-29-23	90-07-26	5.113
14-41K	-149559.556	2.809	-41058.693	27.261	-115333.868637	-4077143.056116	73-21-53	89-52-30	26.935
合計				倍面積 面積	275.370907 137.68	-275.370907 137.68			64.091

面積 (座標法) 計算書

地番 = 14-8

測点名	[1] X (i)	[2] X (i+1)-X (i-1)	[3] Y (i)	[4] Y (i+1)-Y (i-1)	[2] * [3]	[1] * [4]	方向角	夾角	距離
14-41K	-149559.556	-14.636	-41058.693	-23.755	600935.030748	3552787.252780	163-29-13	90-07-20	7.223
14-42K	-149566.481	0.799	-41056.640	27.890	-32804.255360	-4171409.155090	73-21-21	89-52-08	26.967
14-18	-149558.757	14.636	-41030.803	23.755	-600526.832708	-3552768.272535	343-14-13	89-52-52	7.219
14-17K	-149551.845	-0.799	-41032.885	-27.890	32785.275115	4171000.957050	253-21-53	90-07-40	26.935
合計				倍面積 面積	389.217795 194.60	-389.217795 194.60			68.344

面積 (座標法) 計算書

地番 = 14-9

測点名	[1] X (i)	[2] X (i+1)-X (i-1)	[3] Y (i)	[4] Y (i+1)-Y (i-1)	[2] * [3]	[1] * [4]	方向角	夾角	距離
14-19K	-149562.574	16.337	-41029.670	40.745	-670301.718790	-6093927.077630	343-28-03	90-06-44	3.982
14-18	-149558.757	-3.907	-41030.803	-26.970	160307.347321	4033599.676290	253-21-21	89-53-18	26.967
14-42K	-149566.481	-12.522	-41056.640	-41.883	514111.246080	6264292.923723	253-21-09	179-59-48	16.748
14-43	-149571.279	-8.613	-41072.686	-14.908	353759.044518	2229808.627332	163-23-25	90-02-16	3.981
14-47K	-149575.094	8.705	-41071.548	43.016	-357527.825340	-6434122.243504	73-21-19	89-57-54	43.709
合計				倍面積 面積	348.093789 174.04	-348.093789 174.04			95.387

面積 (座標法) 計算書

地番 = 14-10

測点名	[1] X (i)	[2] X (i+1)-X (i-1)	[3] Y (i)	[4] Y (i+1)-Y (i-1)	[2] * [3]	[1] * [4]	方向角	夾角	距離
14-21K	-149578.554	28.506	-41024.883	37.109	-1169455.314798	-5550710.560386	343-19-26	89-58-10	16.682
14-19K	-149562.574	3.460	-41029.670	-46.665	-141962.658200	6979337.515710	253-21-19	90-01-53	43.709
14-47K	-149575.094	-18.802	-41071.548	-40.005	772227.245496	5983751.635470	163-23-52	90-02-33	6.555
14-53	-149581.376	-15.986	-41069.675	4.769	656539.824550	-713353.582144	163-22-59	179-59-07	10.127
14-48K	-149591.080	2.822	-41066.779	44.792	-115890.450338	-6700483.655360	73-21-16	89-58-17	43.728
合計				倍面積 面積	1458.646710 729.32	-1458.646710 729.32			120.801

面積 (座標法) 計算書

地番 = 14-11

測点名	[1] X (i)	[2] X (i+1)-X (i-1)	[3] Y (i)	[4] Y (i+1)-Y (i-1)	[2] * [3]	[1] * [4]	方向角	夾角	距離
14-76K	-149602.897	15.282	-41017.602	30.313	-626830.993764	-4534912.616761	343-25-58	90-01-49	5.987
14-20	-149597.159	-3.808	-41019.309	-33.735	156201.528672	5046660.158865	253-24-12	89-58-14	33.420
14-56	-149606.705	-15.282	-41051.337	-30.313	627346.532034	4535028.048665	163-21-14	89-57-02	5.987
14-77K	-149612.441	3.808	-41049.622	33.735	-156316.960576	-5047175.697135	73-24-09	90-02-55	33.412
合計				倍面積 面積	400.106366 200.05	-400.106366 200.05			78.806

面積 (座標法) 計算書

地番 = 14-12

測点名	[1] X (i)	[2] X (i+1)-X (i-1)	[3] Y (i)	[4] Y (i+1)-Y (i-1)	[2]*[3]	[1]*[4]	方向角	夾角	距離
14-24K	-149618.840	10.489	-41012.858	31.714	-430183.867562	-4745011.891760	343-16-43	89-52-28	0.994
14-120	-149617.888	11.451	-41013.144	-3.408	-469641.511944	509897.762304	343-26-22	180-09-39	10.953
14-23K	-149607.389	0.957	-41016.266	-35.136	-39252.566562	5256605.219904	253-24-11	89-57-49	33.406
14-57K	-149616.931	-20.988	-41048.280	-28.592	861521.300640	4277847.291152	163-21-18	89-57-07	11.947
14-58K	-149628.377	-1.909	-41044.858	35.422	78354.633922	-5300136.370094	73-24-15	90-02-57	33.391
合計				倍面積 面積	797.988494 398.99	-797.988494 398.99			90.691

面積 (座標法) 計算書

地番 = 14-13

測点名	[1] X (i)	[2] X (i+1)-X (i-1)	[3] Y (i)	[4] Y (i+1)-Y (i-1)	[2]*[3]	[1]*[4]	方向角	夾角	距離
14-58K	-149628.377	-18.290	-41044.858	-29.383	750710.452820	4396530.601391	163-21-15	89-57-00	9.136
14-44K	-149637.130	-9.317	-41042.241	34.273	382390.559397	-5128513.356490	91-01-15	107-40-00	31.661
14-9	-149637.694	2.617	-41010.585	34.091	-107324.700945	-5101298.626154	37-26-00	126-24-45	4.006
14-5	-149634.513	18.854	-41008.150	-2.273	-773167.660100	340119.248049	343-16-49	125-50-49	16.365
14-24K	-149618.840	6.136	-41012.858	-36.708	-251654.896688	5492208.378720	253-24-15	90-07-26	33.391
合計				倍面積 面積	953.754484 476.87	-953.754484 476.87			94.559

面積 (座標法) 計算書

地番 = 14-14

測点名	[1] X (i)	[2] X (i+1)-X (i-1)	[3] Y (i)	[4] Y (i+1)-Y (i-1)	[2]*[3]	[1]*[4]	方向角	夾角	距離
14-69K	-149637.059	-29.316	-41046.293	12.795	1203313.125588	-1914606.169905	91-00-14	107-38-54	4.053
14-44K	-149637.130	30.354	-41042.241	-5.044	-1245796.183314	754769.683720	343-21-19	72-21-05	31.756
14-56	-149606.705	29.316	-41051.337	-12.795	-1203460.995492	1914217.790475	253-18-39	89-57-20	3.862
14-68K	-149607.814	-30.354	-41055.036	5.044	1246184.562744	-754621.813816	163-21-20	90-02-41	30.524
合計				倍面積 面積	240.509526 120.25	-240.509526 120.25			70.195

面積 (座標法) 計算書

地番 = 14-15

測点名	[1] X (i)	[2] X (i+1)-X (i-1)	[3] Y (i)	[4] Y (i+1)-Y (i-1)	[2]*[3]	[1]*[4]	方向角	夾角	距離
14-68K	-149607.814	27.389	-41055.036	-14.937	-1124456.381004	2234691.917718	253-19-10	89-57-50	6.466
14-45	-149609.670	-4.500	-41061.230	-14.981	184775.535000	2241302.466270	253-15-13	179-56-03	9.176
14-66	-149612.314	-27.103	-41070.017	-1.491	1113120.670751	223071.960174	163-23-25	90-08-12	25.524
14-67	-149636.773	-24.745	-41062.721	23.724	1016097.031145	-3549982.802652	90-59-51	107-36-26	16.430
14-69K	-149637.059	28.959	-41046.293	7.685	-1188659.598987	-1149960.798415	343-21-20	72-21-29	30.524
合計				倍面積 面積	877.256905 438.62	-877.256905 438.62			88.120

面積 (座標法) 計算書

地番 = 14-16

測点名	[1] X (i)	[2] X (i+1)-X (i-1)	[3] Y (i)	[4] Y (i+1)-Y (i-1)	[2]*[3]	[1]*[4]	方向角	夾角	距離
14-26K	-149613.197	-7.356	-41079.975	-17.605	302184.296100	2633940.333185	163-27-07	90-07-08	1.998
14-25	-149615.112	0.883	-41079.406	9.958	-36273.115498	-1489867.285296	73-24-20	89-57-13	9.797
14-66	-149612.314	5.442	-41070.017	18.176	-223503.032514	-2719353.419264	73-15-13	179-50-53	9.176
14-45	-149609.670	4.558	-41061.230	8.216	-187157.086340	-1229193.048720	343-23-19	90-08-06	1.997
14-50K	-149607.756	-3.527	-41061.801	-18.745	144824.972127	2804397.386220	253-19-59	89-56-40	18.971
合計				倍面積 面積	76.033875 38.01	-76.033875 38.01			41.939

面積 (座標法) 計算書

地番 = 14-17

測点名	[1] X (i)	[2] X (i+1)-X (i-1)	[3] Y (i)	[4] Y (i+1)-Y (i-1)	[2]*[3]	[1]*[4]	方向角	夾角	距離
14-50K	-149607.756	21.718	-41061.801	13.315	-891780.194118	-1992027.271140	343-22-43	90-02-44	16.987
14-51K	-149591.479	10.848	-41066.660	-23.036	-445491.127680	3445989.310244	253-22-14	89-59-31	18.970
14-27	-149596.908	-15.131	-41084.837	-15.271	621654.668647	2284494.382068	163-19-32	89-57-18	10.128
14-107	-149606.610	-16.289	-41081.931	4.862	669183.574059	-727387.337820	163-27-41	180-08-09	6.871
14-26K	-149613.197	-1.146	-41079.975	20.130	47077.651350	-3011713.655610	73-19-59	89-52-18	18.971
合計				倍面積 面積	644.572258 322.28	-644.572258 322.28			71.927

面積 (座標法) 計算書

地番 = 14-18

測点名	[1] X (i)	[2] X (i+1)-X (i-1)	[3] Y (i)	[4] Y (i+1)-Y (i-1)	[2]*[3]	[1]*[4]	方向角	夾角	距離
14-28K	-149595.509	-6.827	-41085.253	-17.760	280489.022231	2656816.239840	163-26-24	90-04-03	1.460
14-27	-149596.908	4.030	-41084.837	18.593	-165571.893110	-2781455.310444	73-22-14	89-55-50	18.970
14-51K	-149591.479	6.827	-41066.660	17.760	-280362.087820	-2656744.667040	343-23-28	90-01-14	1.459
14-52K	-149590.081	-4.030	-41067.077	-18.593	165500.320310	2781328.376033	253-22-21	89-58-53	18.969
合計				倍面積 面積	55.361611 27.68	-55.361611 27.68			40.858

面積 (座標法) 計算書

地番 = 14-19

測点名	[1] X (i)	[2] X (i+1)-X (i-1)	[3] Y (i)	[4] Y (i+1)-Y (i-1)	[2]*[3]	[1]*[4]	方向角	夾角	距離
14-52K	-149590.081	14.133	-41067.077	15.578	-580400.999241	-2330314.281818	343-22-56	90-00-35	9.084
14-53	-149581.376	3.279	-41069.675	-20.777	-134667.464325	3107852.249152	253-22-51	89-59-55	18.971
14-29	-149586.802	-9.585	-41087.854	-16.929	393827.080590	2532354.971058	163-16-18	89-53-27	4.343
14-108	-149590.961	-8.707	-41086.604	2.601	357741.061028	-389086.089561	163-27-21	180-11-03	4.744
14-28K	-149595.509	0.880	-41085.253	19.527	-36155.022640	-2921151.504243	73-22-21	89-55-00	18.969
合計				倍面積 面積	344.655412 172.32	-344.655412 172.32			56.111

面積 (座標法) 計算書

地番 = 14-20
測点名

	[1] X (i)	[2] X (i+1)-X (i-1)	[3] Y (i)	[4] Y (i+1)-Y (i-1)	[2] * [3]	[1] * [4]	方向角	夾角	距離
14-30K	-149586.123	-6.106	-41088.057	-17.976	250883.676042	2688960.147048	163-21-18	89-58-37	0.709
14-29	-149586.802	4.747	-41087.854	18.382	-195044.042938	-2749704.594364	73-22-51	90-01-33	18.971
14-53	-149581.376	6.106	-41069.675	17.976	-250771.435550	-2688874.814976	343-22-41	89-59-50	0.710
14-54K	-149580.696	-4.747	-41069.878	-18.382	194958.710866	2749592.353872	253-22-41	90-00-00	18.972
合計				倍面積 面積	26.908420 13.45	-26.908420 13.45			39.362

面積 (座標法) 計算書

地番 = 14-21
測点名

	[1] X (i)	[2] X (i+1)-X (i-1)	[3] Y (i)	[4] Y (i+1)-Y (i-1)	[2] * [3]	[1] * [4]	方向角	夾角	距離
14-54K	-149580.696	14.844	-41069.878	15.371	-609641.269032	-2299204.878216	343-23-47	90-01-06	9.827
14-43	-149571.279	3.997	-41072.686	-20.992	-164167.525942	3139800.288768	253-24-09	90-00-22	18.975
14-31	-149576.699	-14.844	-41090.870	-15.371	609952.874280	2299143.440329	163-22-48	89-58-39	9.835
14-30K	-149586.123	-3.997	-41088.057	20.992	164228.963829	-3140111.894016	73-22-41	89-59-53	18.972
合計				倍面積 面積	373.043135 186.52	-373.043135 186.52			57.609

面積 (座標法) 計算書

地番 = 14-22
測点名

	[1] X (i)	[2] X (i+1)-X (i-1)	[3] Y (i)	[4] Y (i+1)-Y (i-1)	[2] * [3]	[1] * [4]	方向角	夾角	距離
14-32K	-149566.727	-20.196	-41093.851	-31.272	829931.414796	4677250.686744	163-21-24	89-58-34	10.408
14-31	-149576.699	-4.552	-41090.870	21.165	187045.640240	-3165790.834335	73-24-09	90-02-45	18.975
14-43	-149571.279	10.218	-41072.686	34.230	-419680.705548	-5119824.880170	73-21-09	179-57-00	16.748
14-42K	-149566.481	14.776	-41056.640	13.088	-606652.912640	-1957526.103328	343-29-15	90-08-06	10.407
14-55K	-149556.503	-0.246	-41059.598	-37.211	10100.661108	5565147.033133	253-22-50	89-53-35	35.746
合計				倍面積 面積	744.097956 372.04	-744.097956 372.04			92.284

面積 (座標法) 計算書

地番 = 14-23
測点名

	[1] X (i)	[2] X (i+1)-X (i-1)	[3] Y (i)	[4] Y (i+1)-Y (i-1)	[2] * [3]	[1] * [4]	方向角	夾角	距離
14-33K	-149554.050	-22.904	-41097.640	-30.471	941300.346560	4557061.457550	163-21-33	89-58-48	13.231
14-32K	-149566.727	-2.453	-41093.851	38.042	100803.216503	-5689817.428534	73-22-50	90-01-17	35.746
14-55K	-149556.503	12.073	-41059.598	33.705	-495712.526654	-5040801.933615	343-29-29	90-06-39	1.928
14-40	-149554.654	12.680	-41060.146	-3.782	-520642.651280	565615.701428	343-22-30	179-53-01	11.304
14-36K	-149543.823	0.604	-41063.380	-37.494	-24802.281520	5606996.099562	253-22-45	90-00-15	35.754
合計				倍面積 面積	946.103609 473.05	-946.103609 473.05			97.963

面積 (座標法) 計算書

地番 = 14-24
測点名

	[1] X (i)	[2] X (i+1)-X (i-1)	[3] Y (i)	[4] Y (i+1)-Y (i-1)	[2] * [3]	[1] * [4]	方向角	夾角	距離
14-22K	-149596.035	30.012	-41019.646	36.677	-1231081.615752	-5486733.775695	343-19-22	89-58-04	18.249
14-21K	-149578.554	4.955	-41024.883	-47.133	-203278.295265	7050085.985682	253-21-16	90-01-54	43.728
14-48K	-149591.080	-30.012	-41066.779	-36.677	1232496.171348	5486552.041160	163-22-53	90-01-37	18.248
14-49K	-149608.566	-4.955	-41061.560	47.133	203460.029800	-7051500.541278	73-21-18	89-58-25	43.747
合計				倍面積 面積	1596.290131 798.14	-1596.290131 798.14			123.972

面積 (座標法) 計算書

地番 = 14-25
測点名

	[1] X (i)	[2] X (i+1)-X (i-1)	[3] Y (i)	[4] Y (i+1)-Y (i-1)	[2] * [3]	[1] * [4]	方向角	夾角	距離
14-78K	-149596.232	12.728	-41019.587	41.855	-522097.303336	-6261350.290360	343-19-39	89-58-21	0.206
14-22K	-149596.035	-12.334	-41019.646	-41.973	505936.313764	6278994.377055	253-21-18	90-01-39	43.747
14-49K	-149608.566	-12.728	-41061.560	-41.855	522631.535680	6261866.529930	163-19-39	89-58-21	0.206
14-79K	-149608.763	12.334	-41061.501	41.973	-506452.553334	-6279528.609399	73-21-18	90-01-39	43.747
合計				倍面積 面積	17.992774 8.99	-17.992774 8.99			87.906

面積 (座標法) 計算書

地番 = 14-26
測点名

	[1] X (i)	[2] X (i+1)-X (i-1)	[3] Y (i)	[4] Y (i+1)-Y (i-1)	[2] * [3]	[1] * [4]	方向角	夾角	距離
14-65K	-149636.751	-24.140	-41063.892	8.365	991282.352880	-1251711.422115	91-04-35	107-41-07	1.171
14-67	-149636.773	24.437	-41062.721	-6.125	-1003449.713077	916525.234625	343-23-25	72-18-50	25.524
14-66	-149612.314	24.140	-41070.017	-8.365	-991430.210380	1251507.006610	253-23-04	89-59-39	1.116
14-64K	-149612.633	-24.437	-41071.086	6.125	1003654.128582	-916377.377125	163-23-28	90-00-24	25.168
合計				倍面積 面積	56.558005 28.27	-56.558005 28.27			52.979

面積 (座標法) 計算書

地番 = 14-27
測点名

	[1] X (i)	[2] X (i+1)-X (i-1)	[3] Y (i)	[4] Y (i+1)-Y (i-1)	[2] * [3]	[1] * [4]	方向角	夾角	距離
14-64K	-149612.633	21.639	-41071.086	-15.514	-888737.229954	2321090.388362	253-24-30	90-01-02	8.681
14-25	-149615.112	-4.924	-41079.406	-7.572	202274.995144	1132885.628064	162-59-22	89-34-52	2.557
14-106	-149617.557	-20.146	-41078.658	6.011	827570.644068	-899351.135127	163-26-29	180-27-07	18.467
14-8	-149635.258	-19.052	-41073.395	7.109	782530.321540	-1063757.049122	126-11-55	142-45-26	2.288
14-10	-149636.609	-1.493	-41071.549	9.503	61319.822657	-1421996.695327	91-03-45	144-51-50	7.658
14-65K	-149636.751	23.976	-41063.892	0.463	-984547.874592	-69281.815713	343-23-28	72-19-43	25.168
合計				倍面積 面積	410.678863 205.33	-410.678863 205.33			64.819

面積 (座標法) 計算書

地番 = 14-28
測点名

	[1] X (i)	[2] X (i+1)-X (i-1)	[3] Y (i)	[4] Y (i+1)-Y (i-1)	[2] * [3]	[1] * [4]	方向角	夾角	距離
14-23K	-149607.389	14.034	-41016.266	30.678	-575622.277044	-4589655.479742	343-26-12	90-02-01	4.686
14-76K	-149602.897	-5.052	-41017.602	-33.356	207220.925304	4990154.232332	253-24-09	89-57-57	33.412
14-77K	-149612.441	-14.034	-41049.622	-30.678	576090.395148	4589810.464998	163-21-34	89-57-25	4.686
14-57K	-149616.931	5.052	-41048.280	33.356	-207375.910560	-4990622.350436	73-24-11	90-02-37	33.406
合計				倍面積 面積	313.132848 156.56	-313.132848 156.56			76.190

面積 (座標法) 計算書

地番 = 14-29
測点名

	[1] X (i)	[2] X (i+1)-X (i-1)	[3] Y (i)	[4] Y (i+1)-Y (i-1)	[2] * [3]	[1] * [4]	方向角	夾角	距離
14-79K	-149608.763	-13.438	-41061.501	-41.643	551784.450438	6230157.717609	163-21-52	90-00-34	0.947
14-45	-149609.670	2.058	-41061.230	10.164	-84504.011340	-1520632.685880	73-18-58	89-57-06	10.328
14-56	-149606.705	12.511	-41051.337	41.921	-513593.277207	-6271662.680305	73-24-12	180-05-14	33.420
14-20	-149597.159	10.473	-41019.309	31.750	-429595.223157	-4749709.798250	343-18-23	89-54-11	0.968
14-78K	-149596.232	-11.604	-41019.587	-42.192	475991.287548	6311764.220544	253-21-18	90-02-55	43.747
合計				倍面積 面積	83.226282 41.61	-83.226282 41.61			89.410