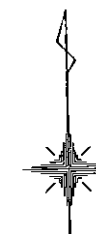
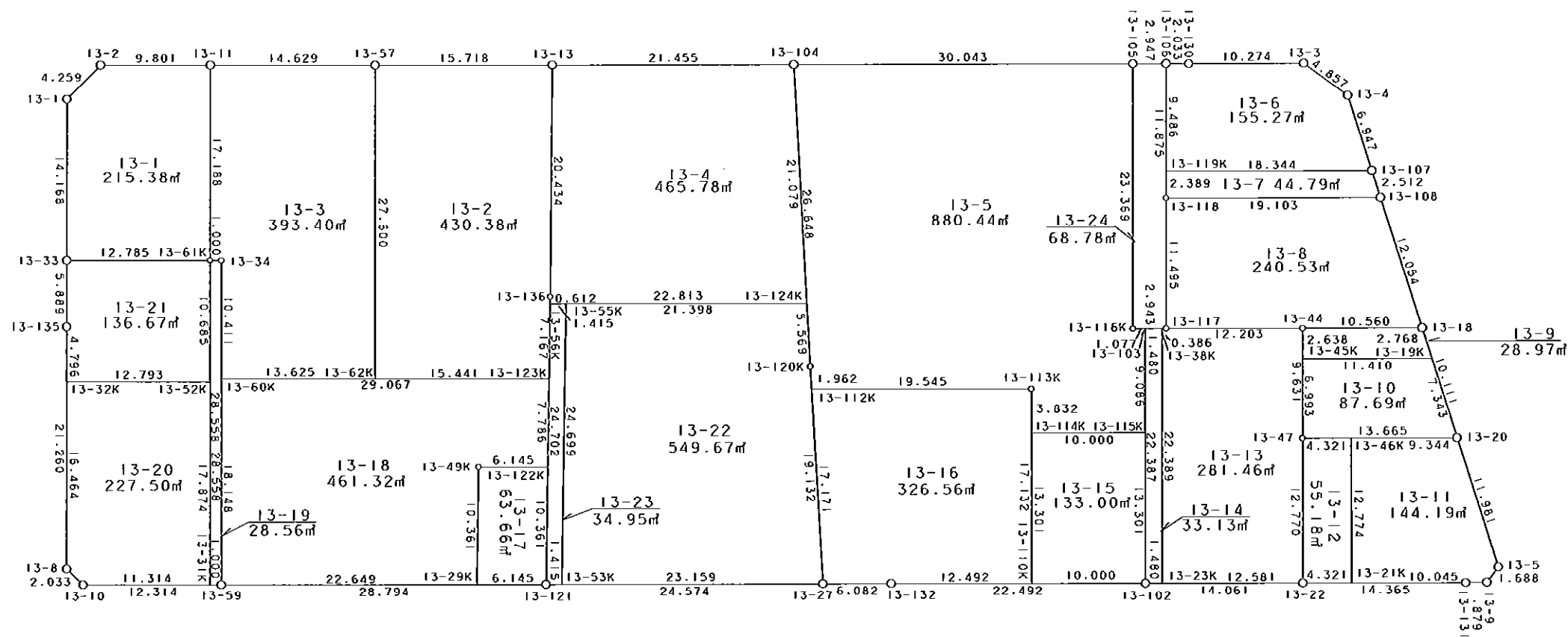


西部第4地区土地区画整理事業 出来形確認測量 (原子図)

13街区



S = 1 / 500



凡 例

記号	名称
⊙	地区界点
○	街区点
○	画地点 (折れ点)
┆	画地点 (直線中)

面積 (座標法) 計算書

地番 = 13街区

測点名	[1] X (i)	[2] X (i+1)-X (i-1)	[3] Y (i)	[4] Y (i+1)-Y (i-1)	[2] * [3]	[1] * [4]	方向角	夾 角	距 離
13-2	-149588.486	-2.793	-41207.108	-12.856	115091.452644	1923109.576016	225-51-56	134-51-15	4.259
13-1	-149591.452	-17.132	-41210.165	-3.300	706012.546780	493651.791600	180-58-58	135-07-02	14.168
13-33	-149605.618	-20.054	-41210.408	-0.353	826433.522032	52810.783154	181-04-13	180-05-15	5.889
13-135	-149611.506	-27.145	-41210.518	-0.464	1118659.511110	69419.738784	180-57-15	179-53-02	21.260
13-8	-149632.763	-22.684	-41210.872	1.094	934827.420448	-163698.242722	134-34-53	133-37-38	2.033
13-10	-149634.190	-1.653	-41209.424	13.760	68119.177872	-2058966.454400	91-03-06	136-28-13	12.314
13-59	-149634.416	-0.731	-41197.112	41.102	30115.088872	-6150273.766432	91-00-18	179-57-12	28.794
13-121	-149634.921	-0.912	-41168.322	53.361	37545.509664	-7984669.019481	90-56-56	179-56-38	24.574
13-27	-149635.328	-0.516	-41143.751	30.652	21230.175516	-4586622.073856	91-01-37	180-04-41	6.082
13-132	-149635.437	-0.541	-41137.670	28.569	22255.479470	-4274934.799653	91-06-02	180-04-25	22.492
13-102	-149635.869	-0.686	-41115.182	36.547	28205.014852	-5468742.104343	91-02-06	179-56-04	14.061
13-22	-149636.123	-0.514	-41101.123	28.422	21125.977222	-4252957.887906	91-02-13	180-00-07	14.365
13-131	-149636.383	-0.264	-41086.760	16.242	10846.904640	-2430394.132686	90-07-19	179-05-06	1.879
13-9	-149636.387	1.320	-41084.881	2.926	-54232.042920	-437836.068362	38-20-11	128-12-52	1.688
13-5	-149635.063	12.800	-41083.834	-2.396	-525873.075200	358525.610948	343-17-59	124-57-48	11.981
13-20	-149623.587	21.160	-41087.277	-6.351	-869406.781320	950259.401037	343-17-08	179-59-09	10.111
13-18	-149613.903	21.231	-41090.185	-6.367	-872385.717735	952591.720401	343-19-26	180-02-18	12.054
13-108	-149602.356	13.955	-41093.644	-4.175	-573461.802020	624589.836300	343-26-26	180-07-00	2.512
13-107	-149599.948	9.064	-41094.360	-2.704	-372479.279040	404518.259392	343-22-13	179-55-47	6.947
13-4	-149593.292	9.583	-41096.348	-5.864	-393826.302884	877215.064288	307-03-31	143-41-18	4.857
13-3	-149590.365	3.098	-41100.224	-14.149	-127328.493952	2116554.074385	270-57-13	143-53-42	10.274
13-130	-149590.194	0.215	-41110.497	-12.306	-8838.756855	1840856.927364	271-14-23	180-17-10	2.033
13-106	-149590.150	0.092	-41112.530	-4.980	-3782.352760	744958.947000	270-55-59	179-41-36	2.947
13-105	-149590.102	0.568	-41115.477	-32.985	-23353.590936	4934229.514470	270-59-30	180-03-31	30.043
13-104	-149589.582	0.909	-41145.515	-51.489	-37401.273135	7702217.987598	271-02-20	180-02-50	21.455
13-13	-149589.193	0.667	-41166.966	-37.167	-27458.366322	5559781.536231	271-00-48	179-58-28	15.718
13-57	-149588.915	0.534	-41182.682	-30.343	-21991.552188	4538976.447845	271-00-10	179-59-22	14.629
13-11	-149588.659	0.429	-41197.309	-24.426	-17673.645561	3653852.584734	271-00-41	180-00-31	9.801
合計				倍面積 面 積	10974.748294 5487.37	-10974.748294 5487.37			329.220

地番	筆種別	面積	坪数
13-1	筆界	215.38	65.15
13-2	筆界	430.38	130.19
13-3	筆界	393.40	119.00
13-4	筆界	465.78	140.90
13-5	筆界	880.44	266.33
13-6	筆界	155.27	46.96
13-7	筆界	44.79	13.54
13-8	筆界	240.53	72.76
13-9	筆界	28.97	8.76
13-10	筆界	87.69	26.52
13-11	筆界	144.19	43.62
13-12	筆界	55.18	16.69
13-13	筆界	281.46	85.14
13-14	筆界	33.13	10.02
13-15	筆界	133.00	40.23
13-16	筆界	326.56	98.78
13-17	筆界	63.66	19.25
13-18	筆界	461.32	139.55
13-19	筆界	28.56	8.64
13-20	筆界	227.50	68.81
13-21	筆界	136.67	41.34
13-22	筆界	549.67	166.27
13-23	筆界	34.95	10.57
13-24	筆界	68.78	20.80
	合	5487.26	1659.82

面積 (座標法) 計算書

地番 = 13-1
測点名

	[1] X (i)	[2] X (i+1)-X (i-1)	[3] Y (i)	[4] Y (i+1)-Y (i-1)	[2] * [3]	[1] * [4]	方向角	夾角	距離
13-2	-149588.486	-2.793	-41207.108	-12.856	115091.452644	1923109.576016	225-51-56	134-51-15	4.259
13-1	-149591.452	-17.132	-41210.165	-3.300	706012.546780	493651.791600	180-58-58	135-07-02	14.168
13-33	-149605.618	-14.392	-41210.408	12.540	593100.191936	-1876054.449720	91-00-46	90-01-48	12.785
13-61K	-149605.844	16.959	-41197.625	13.099	-698670.522375	-1959686.950556	1-03-12	90-02-26	17.188
13-11	-149588.659	17.358	-41197.309	-9.483	-715102.889622	1418549.253297	271-00-41	89-57-29	9.801
合計				倍面積 面積	430.779363 215.38	-430.779363 215.38			58.201

面積 (座標法) 計算書

地番 = 13-2
測点名

	[1] X (i)	[2] X (i+1)-X (i-1)	[3] Y (i)	[4] Y (i+1)-Y (i-1)	[2] * [3]	[1] * [4]	方向角	夾角	距離
13-57	-149588.915	-27.318	-41182.682	-16.214	1125028.506876	2425434.667810	181-02-02	90-01-14	27.600
13-62K	-149616.511	-27.868	-41183.180	14.941	1147692.860240	-2235420.290851	91-00-34	89-58-32	15.441
13-123K	-149616.783	6.891	-41167.741	15.668	-283686.903231	-2344195.756044	1-49-52	90-49-18	7.167
13-136	-149609.620	27.590	-41167.512	0.775	-1135811.656080	-115947.455500	1-31-52	179-42-00	20.434
13-13	-149589.193	20.705	-41166.966	-15.170	-852362.031030	2269268.057810	271-00-48	89-28-56	15.718
合計				倍面積 面積	860.776775 430.38	-860.776775 430.38			86.360

面積 (座標法) 計算書

地番 = 13-3
測点名

	[1] X (i)	[2] X (i+1)-X (i-1)	[3] Y (i)	[4] Y (i+1)-Y (i-1)	[2] * [3]	[1] * [4]	方向角	夾角	距離
13-57	-149588.915	27.852	-41182.682	-14.129	-1147020.059064	2113541.780035	271-00-10	89-58-08	14.629
13-11	-149588.659	-16.929	-41197.309	-14.943	697429.244061	2235303.331437	181-03-12	90-03-02	17.188
13-61K	-149605.844	-17.203	-41197.625	0.684	708722.742875	-102330.397296	91-01-52	89-58-40	1.000
13-34	-149605.862	-10.427	-41196.625	0.822	429557.208875	-122976.018564	180-58-47	269-56-55	10.411
13-60K	-149616.271	-10.649	-41196.803	13.445	438704.755147	-2011590.763595	91-00-33	90-01-46	13.625
13-62K	-149616.511	27.356	-41183.180	14.121	-1126607.072080	-2112734.751831	1-02-02	90-01-29	27.600
合計				倍面積 面積	786.819814 393.40	-786.819814 393.40			84.453

面積 (座標法) 計算書

地番 = 13-4
測点名

	[1] X (i)	[2] X (i+1)-X (i-1)	[3] Y (i)	[4] Y (i+1)-Y (i-1)	[2] * [3]	[1] * [4]	方向角	夾角	距離
13-124K	-149610.646	20.650	-41144.723	22.017	-849638.529950	-3293977.592982	357-50-48	86-48-25	21.079
13-104	-149589.582	21.453	-41145.515	-22.243	-882694.733295	3327321.072426	271-02-20	93-11-32	21.455
13-13	-149589.193	-20.038	-41166.966	-21.997	824903.664708	3290513.478421	181-31-52	90-29-32	20.434
13-136	-149609.620	-21.039	-41167.512	-0.566	866123.284968	84679.044920	181-52-18	180-20-26	0.612
13-56K	-149610.232	-1.026	-41167.532	22.789	42237.887832	-3409467.577048	91-02-23	89-10-05	22.813
合計				倍面積 面積	931.574263 465.78	-931.574263 465.78			86.393

面積 (座標法) 計算書

地番 = 13-5
測点名

	[1] X (i)	[2] X (i+1)-X (i-1)	[3] Y (i)	[4] Y (i+1)-Y (i-1)	[2] * [3]	[1] * [4]	方向角	夾角	距離
13-104	-149589.582	-26.109	-41145.515	-29.037	1074268.251135	4343632.692534	177-50-50	86-51-20	26.648
13-120K	-149616.211	-28.589	-41144.514	1.079	1176280.510746	-161435.891669	177-43-16	179-52-26	1.962
13-112K	-149618.171	-2.336	-41144.436	19.619	96113.402496	-2935358.896849	91-06-08	93-22-52	19.545
13-113K	-149618.547	-4.207	-41124.895	19.477	173012.433265	-2914120.439919	180-57-26	269-51-18	3.832
13-114K	-149622.378	-4.023	-41124.959	9.934	165445.710057	-1486348.703052	91-06-01	90-08-35	10.000
13-115K	-149622.570	8.893	-41114.961	10.149	-365635.348173	-1518519.462930	0-57-08	89-51-07	9.086
13-103	-149613.485	9.103	-41114.810	-0.926	-374268.115430	138542.087110	270-57-27	90-00-19	1.077
13-116K	-149613.467	23.383	-41115.887	-0.667	-961412.785721	99792.182489	1-00-19	270-02-52	23.369
13-105	-149590.102	23.885	-41115.477	-29.628	-982043.168145	4432055.542056	270-59-30	89-59-11	30.043
合計				倍面積 面積	1760.890230 880.44	-1760.890230 880.44			125.562

面積 (座標法) 計算書

地番 = 13-6
測点名

	[1] X (i)	[2] X (i+1)-X (i-1)	[3] Y (i)	[4] Y (i+1)-Y (i-1)	[2] * [3]	[1] * [4]	方向角	夾角	距離
13-107	-149599.948	6.342	-41094.360	16.353	-260620.431120	-2446407.949644	343-22-13	72-23-22	6.947
13-4	-149593.292	9.583	-41096.348	-5.864	-393826.302884	877215.064288	307-03-31	143-41-18	4.857
13-3	-149590.365	3.098	-41100.224	-14.149	-127328.493952	2116554.074385	270-57-13	143-53-42	10.274
13-130	-149590.194	0.215	-41110.497	-12.306	-8838.756855	1840856.927364	271-14-23	180-17-10	2.033
13-106	-149590.150	-9.440	-41112.530	-2.204	388102.283200	329696.690600	181-01-59	89-47-36	9.486
13-119K	-149599.634	-9.798	-41112.701	18.170	402822.244398	-2718225.349780	90-58-51	89-56-52	18.344
合計				倍面積 面積	310.542787 155.27	-310.542787 155.27			51.941

面積 (座標法) 計算書

地番 = 13-7
測点名

	[1] X (i)	[2] X (i+1)-X (i-1)	[3] Y (i)	[4] Y (i+1)-Y (i-1)	[2] * [3]	[1] * [4]	方向角	夾角	距離
13-107	-149599.948	2.722	-41094.360	-19.057	-111858.847920	2850926.209036	270-58-51	107-32-25	18.344
13-119K	-149599.634	-2.075	-41112.701	-18.384	85308.854575	2750239.671456	181-01-52	90-03-01	2.389
13-118	-149602.023	-2.722	-41112.744	19.057	111908.889168	-2850965.752311	90-59-56	89-58-04	19.103
13-108	-149602.356	2.075	-41093.644	18.384	-85269.311300	-2750289.712704	343-26-26	72-26-30	2.512
合計				倍面積 面積	89.584523 44.79	-89.584523 44.79			42.348

面積 (座標法) 計算書

地番 = 13-8
測点名

	[1] X (i)	[2] X (i+1)-X (i-1)	[3] Y (i)	[4] Y (i+1)-Y (i-1)	[2]*[3]	[1]*[4]	方向角	夾角	距離
13-118	-149602.023	-11.160	-41112.744	-19.300	458818.223040	2887319.043900	180-59-49	89-59-53	11.495
13-117	-149613.516	-11.702	-41112.944	12.001	481103.670688	-1795511.805516	90-58-53	89-59-04	12.203
13-44	-149613.725	-0.387	-41100.743	22.759	15905.987541	-3405058.767275	90-57-57	179-59-04	10.560
13-18	-149613.903	11.369	-41090.185	7.099	-467154.313265	-1062109.097397	343-19-26	72-21-29	12.054
13-108	-149602.356	11.880	-41093.644	-22.559	-488192.490720	3374879.549004	270-59-56	107-40-30	19.103
合計				倍面積 面積	481.077284 240.53	-481.077284 240.53			65.415

面積 (座標法) 計算書

地番 = 13-9
測点名

	[1] X (i)	[2] X (i+1)-X (i-1)	[3] Y (i)	[4] Y (i+1)-Y (i-1)	[2]*[3]	[1]*[4]	方向角	夾角	距離
13-19K	-149616.554	2.459	-41089.389	10.612	-101038.807551	-1587730.871048	343-17-13	72-19-22	2.768
13-18	-149613.903	2.829	-41090.185	-11.354	-116244.133365	1698716.254662	270-57-57	107-40-44	10.560
13-44	-149613.725	-2.459	-41100.743	-10.612	101066.727037	1587700.849700	181-10-23	90-12-26	2.638
13-45K	-149616.362	-2.829	-41100.797	11.354	116274.154713	-1698744.174148	90-57-51	89-47-28	11.410
合計				倍面積 面積	57.940834 28.97	-57.940834 28.97			27.376

面積 (座標法) 計算書

地番 = 13-10
測点名

	[1] X (i)	[2] X (i+1)-X (i-1)	[3] Y (i)	[4] Y (i+1)-Y (i-1)	[2]*[3]	[1]*[4]	方向角	夾角	距離
13-45K	-149616.362	-6.800	-41100.797	-11.551	279485.419600	1728218.597462	181-10-18	90-12-27	6.993
13-47	-149623.354	-7.225	-41100.940	13.520	296954.291500	-2022907.746080	90-58-37	89-48-19	13.665
13-20	-149623.587	6.800	-41087.277	11.551	-279393.483600	-1728302.053437	343-17-06	72-18-29	7.343
13-19K	-149616.554	7.225	-41089.389	-13.520	-296870.835525	2022815.810080	270-57-51	107-40-45	11.410
合計				倍面積 面積	175.391975 87.69	-175.391975 87.69			39.411

面積 (座標法) 計算書

地番 = 13-11
測点名

	[1] X (i)	[2] X (i+1)-X (i-1)	[3] Y (i)	[4] Y (i+1)-Y (i-1)	[2]*[3]	[1]*[4]	方向角	夾角	距離
13-21K	-149636.201	-12.955	-41096.803	9.860	532409.082865	-1475412.941860	91-02-18	90-13-03	10.045
13-131	-149636.383	-0.186	-41086.760	11.922	7642.137360	-1783964.958126	90-07-19	179-05-01	1.879
13-9	-149636.387	1.320	-41084.881	2.926	-54232.042920	-437836.068362	38-20-11	128-12-52	1.688
13-5	-149635.063	12.800	-41083.834	-2.396	-525873.075200	358525.610948	343-17-59	124-57-48	11.981
13-20	-149623.587	11.635	-41087.277	-12.786	-478050.467895	1913087.183382	270-58-30	107-40-31	9.344
13-46K	-149623.428	-12.614	-41096.620	-9.526	518392.764680	1425312.775128	180-49-15	89-50-45	12.774
合計				倍面積 面積	288.398890 144.19	-288.398890 144.19			47.711

面積 (座標法) 計算書

地番 = 13-12
測点名

	[1] X (i)	[2] X (i+1)-X (i-1)	[3] Y (i)	[4] Y (i+1)-Y (i-1)	[2] * [3]	[1] * [4]	方向角	夾角	距離
13-46K	-149623.428	12.847	-41096.620	-4.137	-527968.277140	618992.121636	270-58-53	90-09-38	4.321
13-47	-149623.354	-12.695	-41100.940	-4.503	521776.433300	673753.963062	180-49-16	89-50-23	12.770
13-22	-149636.123	-12.847	-41101.123	4.137	528026.127181	-619044.640851	91-02-04	90-12-48	4.321
13-21K	-149636.201	12.695	-41096.803	4.503	-521723.914085	-673811.813103	0-49-15	89-47-11	12.774
合計				倍面積 面積	110.369256 55.18	-110.369256 55.18			34.186

面積 (座標法) 計算書

地番 = 13-13
測点名

	[1] X (i)	[2] X (i+1)-X (i-1)	[3] Y (i)	[4] Y (i+1)-Y (i-1)	[2] * [3]	[1] * [4]	方向角	夾角	距離
13-23K	-149635.896	-22.613	-41113.702	12.207	929704.143326	-1826605.382472	91-02-02	90-04-55	12.581
13-22	-149636.123	12.542	-41101.123	12.762	-515490.284666	-1909656.201726	0-49-16	89-47-14	12.770
13-47	-149623.354	22.398	-41100.940	0.380	-920578.854120	-56856.874520	1-10-19	180-21-03	9.631
13-44	-149613.725	9.838	-41100.743	-12.004	-404349.109634	1795963.154900	270-58-53	89-48-34	12.203
13-117	-149613.516	0.215	-41112.944	-12.587	-8839.282960	1883185.325892	270-53-26	179-54-33	0.386
13-38K	-149613.510	-22.380	-41113.330	-0.758	920116.325400	113407.040580	180-57-07	90-03-41	22.389
合計				倍面積 面積	562.937346 281.46	-562.937346 281.46			69.960

面積 (座標法) 計算書

地番 = 13-14
測点名

	[1] X (i)	[2] X (i+1)-X (i-1)	[3] Y (i)	[4] Y (i+1)-Y (i-1)	[2] * [3]	[1] * [4]	方向角	夾角	距離
13-38K	-149613.510	22.411	-41113.330	-1.108	-921390.838630	165771.769080	270-58-04	90-00-57	1.480
13-103	-149613.485	-22.359	-41114.810	-1.852	919286.036790	277084.174220	180-57-08	89-59-04	22.387
13-102	-149635.869	-22.411	-41115.182	1.108	921432.343802	-165796.542852	91-02-43	90-05-35	1.480
13-23K	-149635.896	22.359	-41113.702	1.852	-919261.263018	-277125.679392	0-57-07	89-54-24	22.389
合計				倍面積 面積	66.278944 33.13	-66.278944 33.13			47.736

面積 (座標法) 計算書

地番 = 13-15
測点名

	[1] X (i)	[2] X (i+1)-X (i-1)	[3] Y (i)	[4] Y (i+1)-Y (i-1)	[2] * [3]	[1] * [4]	方向角	夾角	距離
13-114K	-149622.378	-13.107	-41124.959	-10.219	539024.837613	1528991.080782	180-57-07	89-51-06	13.301
13-110K	-149635.677	-13.491	-41125.180	9.777	554819.803380	-1462988.014029	91-06-01	90-08-54	10.000
13-102	-149635.869	13.107	-41115.182	10.219	-538896.690474	-1529128.945311	0-57-07	89-51-06	13.301
13-115K	-149622.570	13.491	-41114.961	-9.777	-554681.938851	1462859.866890	271-06-01	90-08-54	10.000
合計				倍面積 面積	266.011668 133.00	-266.011668 133.00			46.602

面積 (座標法) 計算書

地番 = 13-16
測点名

	[1] X (i)	[2] X (i+1)-X (i-1)	[3] Y (i)	[4] Y (i+1)-Y (i-1)	[2]*[3]	[1]*[4]	方向角	夾角	距離
13-112K	-149618.171	-16.781	-41144.436	-18.856	690444.780516	2821200.232376	177-42-49	86-36-41	17.171
13-27	-149635.328	-17.266	-41143.751	6.766	710388.004766	-1012432.629248	91-01-37	93-18-48	6.082
13-132	-149635.437	-0.349	-41137.670	18.571	14357.046830	-2778879.700527	91-06-03	180-04-26	12.492
13-110K	-149635.677	16.890	-41125.180	12.775	-694604.290200	-1911595.773675	0-57-11	89-51-08	17.132
13-113K	-149618.547	17.506	-41124.895	-19.256	-719932.411870	2881054.741032	271-06-08	90-08-57	19.545
合計				倍面積 面積	653.130042 326.56	-653.130042 326.56			72.422

面積 (座標法) 計算書

地番 = 13-17
測点名

	[1] X (i)	[2] X (i+1)-X (i-1)	[3] Y (i)	[4] Y (i+1)-Y (i-1)	[2]*[3]	[1]*[4]	方向角	夾角	距離
13-49K	-149624.457	-10.248	-41174.134	-6.476	421952.525232	968967.983532	181-50-10	90-49-45	10.361
13-29K	-149634.813	-10.464	-41174.466	5.812	430849.612224	-869677.533156	91-00-25	89-10-15	6.145
13-121	-149634.921	10.248	-41168.322	6.476	-421892.963856	-969035.748396	1-50-10	90-49-45	10.361
13-122K	-149624.565	10.464	-41167.990	-5.812	-430781.847360	869617.971780	271-00-25	89-10-15	6.145
合計				倍面積 面積	127.326240 63.66	-127.326240 63.66			33.012

面積 (座標法) 計算書

地番 = 13-18
測点名

	[1] X (i)	[2] X (i+1)-X (i-1)	[3] Y (i)	[4] Y (i+1)-Y (i-1)	[2]*[3]	[1]*[4]	方向角	夾角	距離
13-60K	-149616.271	-17.633	-41196.803	-29.371	726423.227299	4394379.495541	180-58-32	89-57-59	18.148
13-59	-149634.416	-18.542	-41197.112	22.337	763876.850704	-3342383.950192	91-00-16	90-01-44	22.649
13-29K	-149634.813	9.959	-41174.466	22.978	-410056.506894	-3438308.733114	1-50-10	90-49-54	10.361
13-49K	-149624.457	10.248	-41174.134	6.476	-421952.525232	-968967.983532	91-00-25	269-10-15	6.145
13-122K	-149624.565	7.674	-41167.990	6.393	-315923.155260	-956549.844045	1-49-58	90-49-33	7.786
13-123K	-149616.783	8.294	-41167.741	-28.813	-341445.243854	4310908.368579	271-00-33	89-10-35	29.067
合計				倍面積 面積	922.646763 461.32	-922.646763 461.32			94.156

面積 (座標法) 計算書

地番 = 13-19
測点名

	[1] X (i)	[2] X (i+1)-X (i-1)	[3] Y (i)	[4] Y (i+1)-Y (i-1)	[2]*[3]	[1]*[4]	方向角	夾角	距離
13-31K	-149634.398	-28.572	-41198.112	0.513	1177112.456064	-76762.446174	91-01-52	90-03-14	1.000
13-59	-149634.416	28.536	-41197.112	1.487	-1175600.788032	-222506.376592	0-58-38	89-56-46	28.558
13-34	-149605.862	28.572	-41196.625	-0.513	-1177069.969500	76747.807206	271-01-52	90-03-14	1.000
13-61K	-149605.844	-28.536	-41197.625	-1.487	1175615.427000	222463.890028	180-58-38	89-56-46	28.558
合計				倍面積 面積	57.125532 28.56	-57.125532 28.56			59.116

面積 (座標法) 計算書

地番 = 13-20
測点名

	[1] X (i)	[2] X (i+1)-X (i-1)	[3] Y (i)	[4] Y (i+1)-Y (i-1)	[2]*[3]	[1]*[4]	方向角	夾角	距離
13-32K	-149616.301	-16.236	-41210.598	-13.065	669095.269128	1954736.972565	180-57-13	89-56-29	16.464
13-8	-149632.763	-17.889	-41210.872	1.174	737221.289208	-175668.863762	134-34-53	133-37-40	2.033
13-10	-149634.190	-1.635	-41209.424	12.760	67377.408240	-1909332.264400	91-03-12	136-28-19	11.314
13-31K	-149634.398	17.663	-41198.112	11.617	-727682.252256	-1738302.801566	0-58-40	89-55-28	17.874
13-52K	-149616.527	18.097	-41197.807	-12.486	-745556.713279	1868111.956122	271-00-44	90-02-04	12.793
合計				倍面積 面積	455.001041 227.50	-455.001041 227.50			60.478

面積 (座標法) 計算書

地番 = 13-21
測点名

	[1] X (i)	[2] X (i+1)-X (i-1)	[3] Y (i)	[4] Y (i+1)-Y (i-1)	[2]*[3]	[1]*[4]	方向角	夾角	距離
13-52K	-149616.527	10.457	-41197.807	12.973	-430805.467799	-1940975.204771	0-58-34	89-57-50	10.685
13-61K	-149605.844	10.909	-41197.625	-12.601	-449424.891125	1885183.240244	271-00-46	90-02-12	12.785
13-33	-149605.618	-5.662	-41210.408	-12.893	233333.330096	1928865.232874	181-04-13	90-03-27	5.889
13-135	-149611.506	-10.683	-41210.518	-0.190	440251.963794	28426.186140	180-57-21	179-53-08	4.796
13-32K	-149616.301	-5.021	-41210.598	12.711	206918.412558	-1901772.802011	91-00-44	90-03-23	12.793
合計				倍面積 面積	273.347524 136.67	-273.347524 136.67			46.948

面積 (座標法) 計算書

地番 = 13-22
測点名

	[1] X (i)	[2] X (i+1)-X (i-1)	[3] Y (i)	[4] Y (i+1)-Y (i-1)	[2]*[3]	[1]*[4]	方向角	夾角	距離
13-53K	-149634.944	-25.070	-41166.907	22.366	1032054.358490	-3346735.157504	90-57-00	89-07-01	23.159
13-27	-149635.328	18.733	-41143.751	22.393	-770745.887483	-3350783.899904	357-42-52	86-45-52	19.132
13-120K	-149616.211	24.682	-41144.514	-0.972	-1015528.894548	145426.957092	357-50-57	180-08-05	5.569
13-124K	-149610.646	5.953	-41144.723	-21.603	-244934.536019	3232038.785538	271-02-20	93-11-23	21.398
13-55K	-149610.258	-24.298	-41166.117	-22.184	1000254.310866	3318953.963472	181-49-59	90-47-39	24.699
合計				倍面積 面積	1099.351306 549.67	-1099.351306 549.67			93.957

面積 (座標法) 計算書

地番 = 13-23
測点名

	[1] X (i)	[2] X (i+1)-X (i-1)	[3] Y (i)	[4] Y (i+1)-Y (i-1)	[2]*[3]	[1]*[4]	方向角	夾角	距離
13-55K	-149610.258	24.712	-41166.117	-0.625	-1017297.083304	93506.411250	271-03-10	89-13-11	1.415
13-56K	-149610.232	-24.663	-41167.532	-2.205	1015314.841716	329890.561560	181-49-58	90-46-48	24.702
13-121	-149634.921	-24.712	-41168.322	0.625	1017351.573264	-93521.825625	90-55-52	89-05-54	1.415
13-53K	-149634.944	24.663	-41166.907	2.205	-1015299.427341	-329945.051520	1-49-59	90-54-07	24.699
合計				倍面積 面積	69.904335 34.95	-69.904335 34.95			52.231

面積 (座標法) 計算書

地番 = 13-24
測点名

	[1] X (i)	[2] X (i+1) - X (i-1)	[3] Y (i)	[4] Y (i+1) - Y (i-1)	[2] * [3]	[1] * [4]	方向角	夾角	距離
13-105	-149590.102	-23.317	-41115.477	-3.357	958689.577209	502173.972414	181-00-19	90-04-20	23.369
13-116K	-149613.467	-23.414	-41115.887	2.533	962687.378218	-378970.911911	90-57-14	89-56-55	2.943
13-117	-149613.516	11.444	-41112.944	3.143	-470496.531136	-470235.280788	0-59-49	90-02-35	11.495
13-118	-149602.023	23.366	-41112.744	0.414	-960640.376304	-61935.237522	1-01-57	180-02-08	11.875
13-106	-149590.150	11.921	-41112.530	-2.733	-490102.470130	408829.879950	270-55-59	89-54-02	2.947
合計					137.577857	-137.577857			52.629
				倍面積 面積	68.78	68.78			