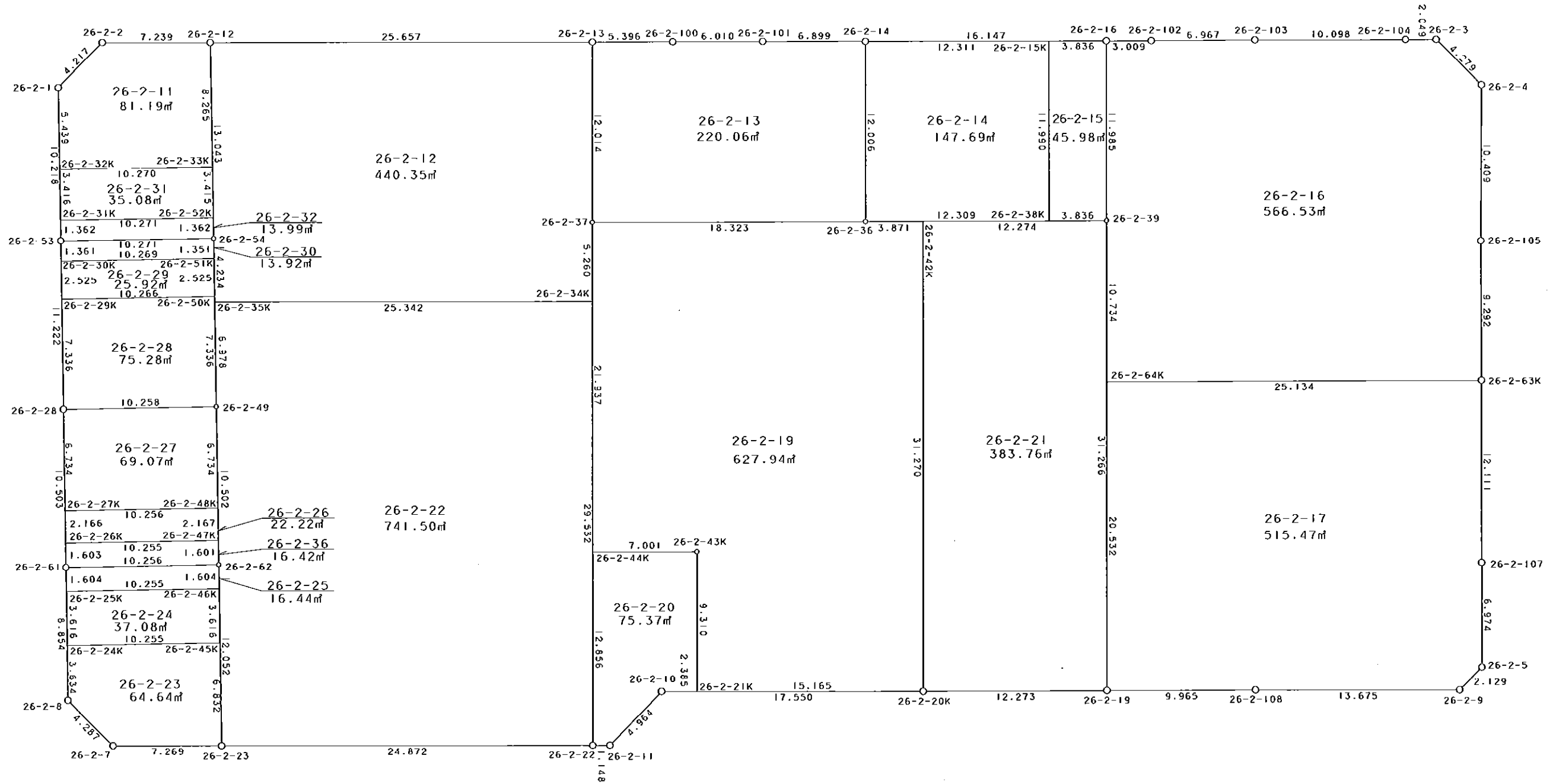


西部第4地区土地区画整理事業 出来形確認測量 (原子図)

26-2街区



S = 1 / 300



凡 例

記号	名称
⊙	地区界点
○	街区点
○	画地点(折れ点)
┆	画地点(直線中)

面積 (座標法) 計算書

地番 = 26-2街区

測点名	[1] X (i)	[2] X (i+1)-X (i-1)	[3] Y (i)	[4] Y (i+1)-Y (i-1)	[2] * [3]	[1] * [4]	方向角	夾 角	距 離
26-2-2	-149587.492	-3.501	-40889.769	-10.047	143155.081269	1502905.532124	221-54-52	134-47-19	4.217
26-2-1	-149590.630	-13.331	-40892.586	-2.108	545139.063966	315337.048040	176-01-16	134-06-24	10.218
26-2-53	-149600.823	-21.389	-40891.877	1.474	874636.357153	-220511.613102	176-05-28	180-04-12	11.222
26-2-28	-149612.019	-21.674	-40891.112	1.487	886273.961488	-222473.072253	176-03-29	179-58-01	10.503
26-2-61	-149622.497	-19.311	-40890.390	1.328	789634.321290	-198698.676016	176-04-31	180-01-02	8.854
26-2-8	-149631.330	-11.698	-40889.784	3.795	478328.693232	-567850.897350	131-56-12	135-51-41	4.287
26-2-7	-149634.195	-2.497	-40886.595	10.449	102093.827715	-1563527.703555	87-05-54	135-09-42	7.269
26-2-23	-149633.827	1.638	-40879.335	32.100	-66960.350730	-4803245.846700	87-04-23	179-58-29	24.872
26-2-22	-149632.557	1.330	-40854.495	25.986	-54336.478350	-3888351.626202	87-00-11	179-55-48	1.148
26-2-11	-149632.497	3.788	-40853.349	4.424	-154752.486012	-661974.166728	41-19-30	134-19-19	4.964
26-2-10	-149628.769	4.593	-40850.071	20.807	-187624.376103	-3113325.796583	87-10-30	225-51-00	17.550
26-2-20K	-149627.904	1.508	-40832.542	29.785	-61575.473336	-4456667.120640	86-59-48	179-49-18	12.273
26-2-19	-149627.261	1.167	-40820.286	22.207	-47637.273762	-3322772.585027	86-59-09	179-59-21	9.965
26-2-108	-149626.737	1.188	-40810.335	23.610	-48482.677980	-3532687.260570	87-13-01	180-13-52	13.675
26-2-9	-149626.073	2.249	-40796.676	15.080	-91751.724324	-2256361.180840	41-52-38	134-39-37	2.129
26-2-5	-149624.488	8.549	-40795.255	1.057	-348758.634995	-158153.083816	357-00-29	135-07-51	6.974
26-2-107	-149617.524	19.059	-40795.619	-0.984	-777523.702521	147223.643616	357-03-56	180-03-27	12.111
26-2-63K	-149605.429	21.373	-40796.239	-1.124	-871938.016147	168156.502196	356-53-26	179-49-30	9.292
26-2-105	-149596.151	19.676	-40796.743	-0.989	-802716.715268	147950.593339	357-19-46	180-26-20	10.409
26-2-4	-149585.753	13.252	-40797.228	-3.673	-540644.865456	549428.470769	311-50-09	134-30-23	4.279
26-2-3	-149582.899	2.753	-40800.416	-5.235	-112323.545248	783066.476265	267-10-31	135-20-22	2.049
26-2-104	-149583.000	-0.625	-40802.463	-12.131	25501.539375	1814591.373000	267-01-31	179-51-00	10.098
26-2-103	-149583.524	-0.911	-40812.547	-17.040	37180.230317	2548903.248960	266-48-56	179-47-25	6.967
26-2-102	-149583.911	-0.543	-40819.503	-9.961	22164.990129	1490005.337471	267-01-42	180-12-46	3.009
26-2-16	-149584.067	-0.976	-40822.508	-19.131	39842.767808	2861692.785777	267-05-21	180-03-39	16.147
26-2-14	-149584.887	-1.156	-40838.634	-23.017	47209.460904	3442995.344079	267-12-31	180-07-10	6.899
26-2-101	-149585.223	-0.648	-40845.525	-12.893	26467.900200	1928602.280139	267-01-27	179-48-56	6.010
26-2-100	-149585.535	-0.590	-40851.527	-11.391	24102.400930	1703928.829185	267-02-49	180-01-22	5.396
26-2-13	-149585.813	-1.594	-40856.916	-31.012	65125.924104	4638955.232756	267-03-36	180-00-47	25.657
26-2-12	-149587.129	-1.679	-40882.539	-32.853	68641.782981	4914385.949037	267-07-33	180-03-57	7.239
合計				倍面積 面積	8471.982629 4235.99	-8471.982629 4235.99			275.682

地番	筆種別	面積	坪数
26-2-11	筆界	81.19	24.55
26-2-12	筆界	440.35	133.20
26-2-13	筆界	220.06	66.57
26-2-14	筆界	147.69	44.67
26-2-15	筆界	45.98	13.91
26-2-16	筆界	566.53	171.37
26-2-17	筆界	515.47	155.93
26-2-19	筆界	627.94	189.95
26-2-20	筆界	75.37	22.79
26-2-21	筆界	383.76	116.08
26-2-22	筆界	741.50	224.30
26-2-23	筆界	64.64	19.55
26-2-24	筆界	37.08	11.21
26-2-25	筆界	16.44	4.97
26-2-26	筆界	22.22	6.72
26-2-27	筆界	69.07	20.89
26-2-28	筆界	75.28	22.77
26-2-29	筆界	25.92	7.84
26-2-30	筆界	13.92	4.21
26-2-31	筆界	35.08	10.61
26-2-32	筆界	13.99	4.23
26-2-36	筆界計	16.42	4.96
	筆合	4235.90	1281.28

面積 (座標法) 計算書

地番 = 26-2-11

測点名	[1] X (i)	[2] X (i+1)-X (i-1)	[3] Y (i)	[4] Y (i+1)-Y (i-1)	[2] * [3]	[1] * [4]	方向角	夾角	距離
26-2-33K	-149595.374	8.927	-40881.962	9.670	-364953.274774	-1446587.266580	355-59-49	89-48-17	8.265
26-2-12	-149587.129	7.882	-40882.539	-7.807	-322236.172398	1167826.716103	267-07-33	91-07-44	7.239
26-2-2	-149587.492	-3.501	-40889.769	-10.047	143155.081269	1502905.532124	221-54-52	134-47-19	4.217
26-2-1	-149590.630	-8.564	-40892.586	-2.440	350204.106504	365001.137200	176-01-32	134-06-40	5.439
26-2-32K	-149596.056	-4.744	-40892.209	10.624	193992.639496	-1589308.498944	86-11-32	90-10-00	10.270
合計				倍面積 面積	162.380097 81.19	-162.380097 81.19			35.430

面積 (座標法) 計算書

地番 = 26-2-12

測点名	[1] X (i)	[2] X (i+1)-X (i-1)	[3] Y (i)	[4] Y (i+1)-Y (i-1)	[2] * [3]	[1] * [4]	方向角	夾角	距離
26-2-34K	-149603.065	6.552	-40856.036	25.035	-267688.747872	-3745312.732275	357-00-51	89-57-08	5.260
26-2-37	-149597.812	17.252	-40856.310	-0.880	-704853.060120	131646.074560	357-06-32	180-05-41	12.014
26-2-13	-149585.813	10.683	-40856.916	-26.229	-436474.433628	3923486.289177	267-03-36	89-57-04	25.657
26-2-12	-149587.129	-14.327	-40882.539	-24.713	585724.136253	3696746.718977	175-59-57	88-56-21	13.043
26-2-54	-149600.140	-17.235	-40881.629	1.194	704594.875815	-178622.567160	176-09-13	180-09-16	4.234
26-2-35K	-149604.364	-2.925	-40881.345	25.593	119577.934125	-3828824.487852	87-03-43	90-54-30	25.342
合計				倍面積 面積	880.704573 440.35	-880.704573 440.35			85.550

面積 (座標法) 計算書

地番 = 26-2-13

測点名	[1] X (i)	[2] X (i+1)-X (i-1)	[3] Y (i)	[4] Y (i+1)-Y (i-1)	[2] * [3]	[1] * [4]	方向角	夾角	距離
26-2-13	-149585.813	-12.277	-40856.916	-4.783	501600.357732	715468.943579	177-06-32	90-03-43	12.014
26-2-37	-149597.812	-11.064	-40856.310	18.905	452034.213840	-2828146.635860	87-04-30	89-57-58	18.323
26-2-36	-149596.877	12.925	-40838.011	17.676	-527831.292175	-2644274.397852	357-01-32	89-57-02	12.006
26-2-14	-149584.887	11.654	-40838.634	-7.514	-475933.440636	1123980.840918	267-12-31	90-10-59	6.899
26-2-101	-149585.223	-0.648	-40845.525	-12.893	26467.900200	1928602.280139	267-01-27	179-48-56	6.010
26-2-100	-149585.535	-0.590	-40851.527	-11.391	24102.400930	1703928.829185	267-02-49	180-01-22	5.396
合計				倍面積 面積	440.139891 220.06	-440.139891 220.06			60.648

面積 (座標法) 計算書

地番 = 26-2-14

測点名	[1] X (i)	[2] X (i+1)-X (i-1)	[3] Y (i)	[4] Y (i+1)-Y (i-1)	[2] * [3]	[1] * [4]	方向角	夾角	距離
26-2-15K	-149584.262	11.349	-40826.339	-12.915	-463338.121311	1931880.743730	267-05-24	90-03-15	12.311
26-2-14	-149584.887	-12.615	-40838.634	-11.672	515179.367910	1745954.801064	177-01-32	89-56-08	12.006
26-2-36	-149596.877	-11.349	-40838.011	12.915	463470.586839	-1932043.666455	87-00-53	89-59-21	12.309
26-2-38K	-149596.236	12.615	-40825.719	11.672	-515016.445185	-1746087.266592	357-02-09	90-01-16	11.990
合計				倍面積 面積	295.388253 147.69	-295.388253 147.69			48.616

面積 (座標法) 計算書

地番 = 26-2-15

測点名	[1] X (i)	[2] X (i+1)-X (i-1)	[3] Y (i)	[4] Y (i+1)-Y (i-1)	[2] * [3]	[1] * [4]	方向角	夾角	距離
26-2-38K	-149596.236	-11.774	-40825.719	4.451	480682.015506	-665852.846436	87-00-42	89-58-33	3.836
26-2-39	-149596.036	12.169	-40821.888	3.211	-496761.555072	-480352.871596	357-02-05	90-01-23	11.985
26-2-16	-149584.067	11.774	-40822.508	-4.451	-480644.209192	665798.682217	267-05-10	90-03-05	3.836
26-2-15K	-149584.262	-12.169	-40826.339	-3.211	496815.719291	480315.065282	177-02-09	89-56-59	11.990
合計				倍面積 面積	91.970533 45.98	-91.970533 45.98			31.647

面積 (座標法) 計算書

地番 = 26-2-16

測点名	[1] X (i)	[2] X (i+1)-X (i-1)	[3] Y (i)	[4] Y (i+1)-Y (i-1)	[2] * [3]	[1] * [4]	方向角	夾角	距離
26-2-63K	-149605.429	10.605	-40796.239	24.595	-432644.114595	-3679545.526255	356-53-26	89-55-01	9.292
26-2-105	-149596.151	19.676	-40796.743	-0.989	-802716.715268	147950.593339	357-19-46	180-26-20	10.409
26-2-4	-149585.753	13.252	-40797.228	-3.673	-540644.865456	549428.470769	311-50-09	134-30-23	4.279
26-2-3	-149582.899	2.753	-40800.416	-5.235	-112323.545248	783066.476265	267-10-31	135-20-22	2.049
26-2-104	-149583.000	-0.625	-40802.463	-12.131	25501.539375	1814591.373000	267-01-31	179-51-00	10.098
26-2-103	-149583.524	-0.911	-40812.547	-17.040	37180.230317	2548903.248960	266-48-56	179-47-25	6.967
26-2-102	-149583.911	-0.543	-40819.503	-9.961	22164.990129	1490005.337471	267-01-42	180-12-46	3.009
26-2-16	-149584.067	-12.125	-40822.508	-2.385	494972.909500	356757.999795	177-02-05	90-00-23	11.985
26-2-39	-149596.036	-22.689	-40821.888	1.170	926207.816832	-175027.362120	177-03-47	180-01-42	10.734
26-2-64K	-149606.756	-9.393	-40821.338	25.649	383434.827834	-3837263.684644	86-58-25	89-54-38	25.134
合計				倍面積 面積	1133.073420 566.53	-1133.073420 566.53			93.956

面積 (座標法) 計算書

地番 = 26-2-17

測点名	[1] X (i)	[2] X (i+1)-X (i-1)	[3] Y (i)	[4] Y (i+1)-Y (i-1)	[2] * [3]	[1] * [4]	方向角	夾角	距離
26-2-64K	-149606.756	-21.832	-40821.338	-24.047	891211.451216	3597593.661532	177-03-47	90-05-22	20.532
26-2-19	-149627.261	-19.981	-40820.286	11.003	815630.134566	-1646348.752783	86-59-09	89-55-22	9.965
26-2-108	-149626.737	1.188	-40810.335	23.610	-48482.677980	-3532687.260570	87-13-01	180-13-52	13.675
26-2-9	-149626.073	2.249	-40796.676	15.080	-91751.724324	-2256361.180840	41-52-38	134-39-37	2.129
26-2-5	-149624.488	8.549	-40795.255	1.057	-348758.634995	-158153.083816	357-00-29	135-07-51	6.974
26-2-107	-149617.524	19.059	-40795.619	-0.984	-777523.702521	147223.643616	357-03-56	180-03-27	12.111
26-2-63K	-149605.429	10.768	-40796.239	-25.719	-439293.901552	3847702.028451	266-58-25	89-54-29	25.134
合計				倍面積 面積	1030.944410 515.47	-1030.944410 515.47			90.520

面積 (座標法) 計算書

地番 = 26-2-19

測点名	[1] X (i)	[2] X (i+1)-X (i-1)	[3] Y (i)	[4] Y (i+1)-Y (i-1)	[2]*[3]	[1]*[4]	方向角	夾角	距離
26-2-37	-149597.812	-22.842	-40856.310	-17.155	933239.833020	2566350.464860	177-00-38	89-56-08	21.937
26-2-44K	-149619.719	-21.542	-40855.166	8.135	880101.985972	-1217156.414065	87-00-41	90-00-03	7.001
26-2-43K	-149619.354	-8.932	-40848.175	7.477	364855.899100	-1118703.909858	177-00-27	269-59-46	9.310
26-2-21K	-149628.651	-8.550	-40847.689	15.633	349247.740950	-2339144.701083	87-10-36	90-10-09	15.165
26-2-20K	-149627.904	31.976	-40832.542	13.544	-1305661.362992	-2026560.331776	357-03-42	89-53-06	31.270
26-2-42K	-149596.675	31.027	-40834.145	-5.469	-1266961.016915	818144.215575	267-00-32	89-56-50	3.871
26-2-36	-149596.877	-1.137	-40838.011	-22.165	46432.818507	3315814.778705	267-04-30	180-03-58	18.323
合計				倍面積 面積	1255.897642 627.94	-1255.897642 627.94			106.877

面積 (座標法) 計算書

地番 = 26-2-20

測点名	[1] X (i)	[2] X (i+1)-X (i-1)	[3] Y (i)	[4] Y (i+1)-Y (i-1)	[2]*[3]	[1]*[4]	方向角	夾角	距離
26-2-44K	-149619.719	-13.203	-40855.166	-6.320	539410.756698	945596.624080	177-00-29	89-59-48	12.856
26-2-22	-149632.557	-12.778	-40854.495	1.817	522038.737110	-271882.356069	87-00-11	89-59-42	1.148
26-2-11	-149632.497	3.788	-40853.349	4.424	-154752.486012	-661974.166728	41-19-30	134-19-19	4.964
26-2-10	-149628.769	3.846	-40850.071	5.660	-157109.373066	-846898.832540	87-09-50	225-50-20	2.385
26-2-21K	-149628.651	9.415	-40847.689	1.896	-384580.991935	-283695.922296	357-00-27	89-50-37	9.310
26-2-43K	-149619.354	8.932	-40848.175	-7.477	-364855.899100	1118703.909858	267-00-41	90-00-14	7.001
合計				倍面積 面積	150.743695 75.37	-150.743695 75.37			37.664

面積 (座標法) 計算書

地番 = 26-2-21

測点名	[1] X (i)	[2] X (i+1)-X (i-1)	[3] Y (i)	[4] Y (i+1)-Y (i-1)	[2]*[3]	[1]*[4]	方向角	夾角	距離
26-2-20K	-149627.904	-30.586	-40832.542	13.859	1248904.129612	-2073693.121536	86-59-48	89-56-06	12.273
26-2-19	-149627.261	31.868	-40820.286	10.654	-1300860.874248	-1594128.838694	357-03-47	90-03-59	31.266
26-2-39	-149596.036	30.586	-40821.888	-13.859	-1248578.266368	2073251.462924	267-00-56	89-57-09	12.274
26-2-42K	-149596.675	-31.868	-40834.145	-10.654	1301302.532860	1593802.975450	177-03-42	90-02-46	31.270
合計				倍面積 面積	767.521856 383.76	-767.521856 383.76			87.083

面積 (座標法) 計算書

地番 = 26-2-22

測点名	[1] X (i)	[2] X (i+1)-X (i-1)	[3] Y (i)	[4] Y (i+1)-Y (i-1)	[2] * [3]	[1] * [4]	方向角	夾角	距離
26-2-35K	-149604.364	-8.261	-40881.345	-24.841	337720.791045	3716322.006124	176-09-15	89-05-32	6.978
26-2-49	-149611.326	-17.439	-40880.877	1.187	712921.614003	-177588.643962	176-04-27	179-55-12	10.502
26-2-62	-149621.803	-22.501	-40880.158	1.542	919844.435158	-230716.820226	176-05-04	180-00-37	12.052
26-2-23	-149633.827	-10.754	-40879.335	25.663	439616.368590	-3840052.902301	87-04-23	90-59-19	24.872
26-2-22	-149632.557	30.762	-40854.495	23.299	-1256765.975190	-3486288.945543	357-00-32	89-56-09	29.532
26-2-34K	-149603.065	28.193	-40856.036	-26.850	-1151854.222948	4016842.295250	267-03-43	90-03-11	25.342
合計				倍面積 面積	1483.010658 741.50	-1483.010658 741.50			109.278

面積 (座標法) 計算書

地番 = 26-2-23

測点名	[1] X (i)	[2] X (i+1)-X (i-1)	[3] Y (i)	[4] Y (i+1)-Y (i-1)	[2] * [3]	[1] * [4]	方向角	夾角	距離
26-2-24K	-149627.705	-4.319	-40890.033	-9.982	176604.052527	1493583.751310	176-04-14	89-57-04	3.634
26-2-8	-149631.330	-6.490	-40889.784	3.438	265374.698160	-514432.512540	131-56-12	135-51-58	4.287
26-2-7	-149634.195	-2.497	-40886.595	10.449	102093.827715	-1563527.703555	87-05-54	135-09-42	7.269
26-2-23	-149633.827	7.184	-40879.335	6.793	-293677.142640	-1016462.586811	356-04-50	88-58-56	6.832
26-2-45K	-149627.011	6.122	-40879.802	-10.698	-250266.147844	1600709.763678	266-07-10	90-02-20	10.255
合計				倍面積 面積	129.287918 64.64	-129.287918 64.64			32.277

面積 (座標法) 計算書

地番 = 26-2-24

測点名	[1] X (i)	[2] X (i+1)-X (i-1)	[3] Y (i)	[4] Y (i+1)-Y (i-1)	[2] * [3]	[1] * [4]	方向角	夾角	距離
26-2-45K	-149627.011	4.302	-40879.802	9.984	-175864.908204	-1493876.077824	356-05-01	89-57-51	3.616
26-2-46K	-149623.403	2.914	-40880.049	-10.478	-119124.462786	1567754.016634	266-07-10	90-02-09	10.255
26-2-25K	-149624.097	-4.302	-40890.280	-9.984	175909.984560	1493846.984448	176-05-01	89-57-51	3.616
26-2-24K	-149627.705	-2.914	-40890.033	10.478	119153.556162	-1567799.092990	86-07-10	90-02-09	10.255
合計				倍面積 面積	74.169732 37.08	-74.169732 37.08			27.742

面積 (座標法) 計算書

地番 = 26-2-25

測点名	[1] X (i)	[2] X (i+1)-X (i-1)	[3] Y (i)	[4] Y (i+1)-Y (i-1)	[2] * [3]	[1] * [4]	方向角	夾角	距離
26-2-46K	-149623.403	2.294	-40880.049	10.122	-93778.832406	-1514488.085166	356-06-10	89-59-00	1.604
26-2-62	-149621.803	0.906	-40880.158	-10.341	-37037.423148	1547239.064823	266-07-11	90-01-01	10.256
26-2-61	-149622.497	-2.294	-40890.390	-10.122	93802.554660	1514478.914634	176-04-02	89-56-51	1.604
26-2-25K	-149624.097	-0.906	-40890.280	10.341	37046.593680	-1547262.787077	86-07-10	90-03-08	10.255
合計				倍面積 面積	32.892786 16.44	-32.892786 16.44			23.719

面積 (座標法) 計算書

地番 = 26-2-26

測点名	[1] X (i)	[2] X (i+1)-X (i-1)	[3] Y (i)	[4] Y (i+1)-Y (i-1)	[2]*[3]	[1]*[4]	方向角	夾角	距離
26-2-47K	-149620.206	2.854	-40880.268	10.084	-116672.284872	-1508770.157304	356-05-02	89-57-11	2.167
26-2-48K	-149618.044	1.469	-40880.416	-10.381	-60053.331104	1553184.914764	266-07-33	90-02-31	10.256
26-2-27K	-149618.737	-2.854	-40890.649	-10.084	116701.912246	1508755.343908	176-03-21	89-55-48	2.166
26-2-26K	-149620.898	-1.469	-40890.500	10.381	60068.144500	-1553214.542138	86-07-51	90-04-30	10.255
合計				倍面積 面積	44.440770 22.22	-44.440770 22.22			24.844

面積 (座標法) 計算書

地番 = 26-2-27

測点名	[1] X (i)	[2] X (i+1)-X (i-1)	[3] Y (i)	[4] Y (i+1)-Y (i-1)	[2]*[3]	[1]*[4]	方向角	夾角	距離
26-2-48K	-149618.044	7.411	-40880.416	9.772	-302964.762976	-1462067.525968	356-04-28	89-56-55	6.734
26-2-49	-149611.326	6.025	-40880.877	-10.696	-246307.283925	1600242.742896	266-07-35	90-03-07	10.258
26-2-28	-149612.019	-7.411	-40891.112	-9.772	303044.031032	1462008.649668	176-03-27	89-55-52	6.734
26-2-27K	-149618.737	-6.025	-40890.649	10.696	246366.160225	-1600322.010952	86-07-33	90-04-06	10.256
合計				倍面積 面積	138.144356 69.07	-138.144356 69.07			33.982

面積 (座標法) 計算書

地番 = 26-2-28

測点名	[1] X (i)	[2] X (i+1)-X (i-1)	[3] Y (i)	[4] Y (i+1)-Y (i-1)	[2]*[3]	[1]*[4]	方向角	夾角	距離
26-2-29K	-149604.700	-8.012	-40891.612	-9.743	327623.595344	1457598.592100	176-05-31	89-57-45	7.336
26-2-28	-149612.019	-6.626	-40891.112	10.735	270944.508112	-1606085.023965	86-07-35	90-02-04	10.258
26-2-49	-149611.326	8.012	-40880.877	9.743	-327537.586524	-1457663.149218	356-09-15	90-01-40	7.336
26-2-50K	-149604.007	6.626	-40881.369	-10.735	-270879.950994	1605999.015145	266-07-46	89-58-31	10.266
合計				倍面積 面積	150.565938 75.28	-150.565938 75.28			35.196

面積 (座標法) 計算書

地番 = 26-2-29

測点名	[1] X (i)	[2] X (i+1)-X (i-1)	[3] Y (i)	[4] Y (i+1)-Y (i-1)	[2]*[3]	[1]*[4]	方向角	夾角	距離
26-2-30K	-149602.181	-3.212	-40891.784	-10.074	131344.410208	1507092.371394	176-05-38	89-57-48	2.525
26-2-29K	-149604.700	-1.826	-40891.612	10.415	74668.083512	-1558132.950500	86-07-46	90-02-08	10.266
26-2-50K	-149604.007	3.212	-40881.369	10.074	-131310.957228	-1507110.766518	356-09-42	90-01-56	2.525
26-2-51K	-149601.488	1.826	-40881.538	-10.415	-74649.688388	1558099.497520	266-07-50	89-58-08	10.269
合計				倍面積 面積	51.848104 25.92	-51.848104 25.92			25.585

面積 (座標法) 計算書

地番 = 26-2-30

測点名	[1] X (i)	[2] X (i+1)-X (i-1)	[3] Y (i)	[4] Y (i+1)-Y (i-1)	[2]*[3]	[1]*[4]	方向角	夾角	距離
26-2-51K	-149601.488	2.041	-40881.538	10.155	-83439.219058	-1519203.110640	356-08-17	90-00-27	1.351
26-2-54	-149600.140	0.665	-40881.629	-10.339	-27186.283285	1546715.847460	266-11-13	90-02-56	10.271
26-2-53	-149600.823	-2.041	-40891.877	-10.155	83460.320957	1519196.357565	176-04-56	89-53-43	1.361
26-2-30K	-149602.181	-0.665	-40891.784	10.339	27193.036360	-1546736.949359	86-07-50	90-02-54	10.269
合計				倍面積 面積	27.854974 13.92	-27.854974 13.92			23.252

面積 (座標法) 計算書

地番 = 26-2-31

測点名	[1] X (i)	[2] X (i+1)-X (i-1)	[3] Y (i)	[4] Y (i+1)-Y (i-1)	[2]*[3]	[1]*[4]	方向角	夾角	距離
26-2-32K	-149596.056	-4.090	-40892.209	-10.010	167249.134810	1497456.520560	176-01-19	89-49-47	3.416
26-2-31K	-149599.464	-2.725	-40891.972	10.485	111430.623700	-1568550.380040	86-11-13	90-09-54	10.271
26-2-52K	-149598.781	4.090	-40881.724	10.010	-167206.251160	-1497483.797810	356-00-14	89-49-01	3.415
26-2-33K	-149595.374	2.725	-40881.962	-10.485	-111403.346450	1568507.496390	266-11-32	90-11-18	10.270
合計				倍面積 面積	70.160900 35.08	-70.160900 35.08			27.372

面積 (座標法) 計算書

地番 = 26-2-32

測点名	[1] X (i)	[2] X (i+1)-X (i-1)	[3] Y (i)	[4] Y (i+1)-Y (i-1)	[2]*[3]	[1]*[4]	方向角	夾角	距離
26-2-31K	-149599.464	-2.042	-40891.972	-10.153	83501.406824	1518883.357992	176-00-05	89-48-52	1.362
26-2-53	-149600.823	-0.676	-40891.877	10.343	27642.908852	-1547321.312289	86-11-13	90-11-08	10.271
26-2-54	-149600.140	2.042	-40881.629	10.153	-83480.286418	-1518890.221420	356-00-05	89-48-52	1.362
26-2-52K	-149598.781	0.676	-40881.724	-10.343	-27636.045424	1547300.191883	266-11-13	90-11-08	10.271
合計				倍面積 面積	27.983834 13.99	-27.983834 13.99			23.266

面積 (座標法) 計算書

地番 = 26-2-36

測点名	[1] X (i)	[2] X (i+1)-X (i-1)	[3] Y (i)	[4] Y (i+1)-Y (i-1)	[2]*[3]	[1]*[4]	方向角	夾角	距離
26-2-26K	-149620.898	-2.291	-40890.500	-10.122	93680.135500	1514462.729556	176-03-53	89-56-02	1.603
26-2-61	-149622.497	-0.905	-40890.390	10.342	37005.802950	-1547395.863974	86-07-11	90-03-18	10.256
26-2-62	-149621.803	2.291	-40880.158	10.122	-93656.441978	-1514471.889966	356-03-35	89-56-24	1.601
26-2-47K	-149620.206	0.905	-40880.268	-10.342	-36996.642540	1547372.170452	266-07-51	90-04-16	10.255
合計				倍面積 面積	32.853932 16.42	-32.853932 16.42			23.715